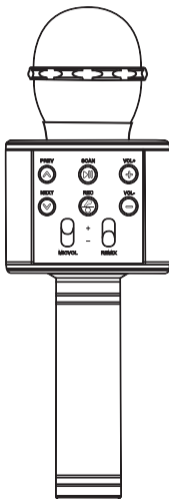


Handheld Wireless Microphone



User Guide

1. Specifications

Output power: 5W

Voltage: DC 5V

2. About the Cable



Cable for Recording x 1



Cable for Charging x 1

3. How to Use

①. " ⏻ "

On/Off: Press and hold it for 2 seconds. After turning it on, please turn on your device's Bluetooth and find the Bluetooth name "**K Microphone**" on your device's Bluetooth setting interface, and then connect it to your device. It supports many music Apps and allows you to sing and play music simultaneously. You only require to connect once, the next time you turn it on, it will automatically re-connect with your device. If you want to disconnect it with your device, please remove the Bluetooth name "K Microphone" from your device's Bluetooth setting interface.

②. "▶||"

Play or pause the music: click once.

③. "∧"

Skip to previous song: click once.

④. "∨"

Skip to next song: click once.

⑤. Mic Volume.

Slide it to top to increase microphone's volume, slide it to bottom to decrease microphone's volume. If the microphone volume is still low, please try to increase the echo volume and the music volume.

⑥. VOL+:

Increase the music volume. You can also adjust the music volume on your phone.

⑦. VOL-:

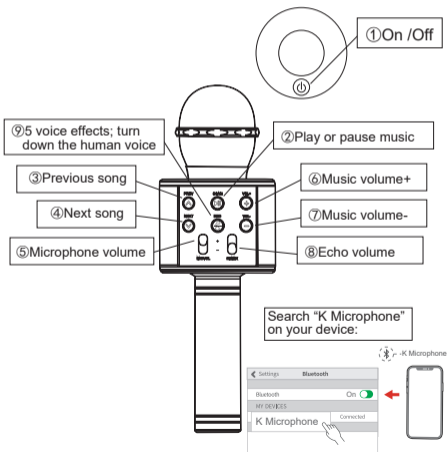
Decrease the music volume. You can also adjust the music volume on your phone.

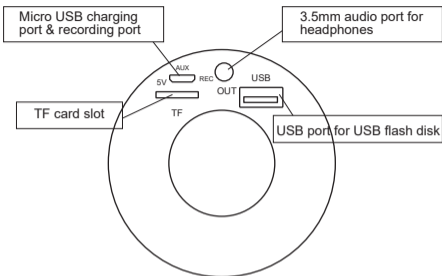
⑧. Remix:

Slide it to top to increase the echo/remix volume, slide it to bottom to decrease echo/remix volume. When you are singing, we recommend you to increase this volume to get a better experience.

⑨. 🎤/🔇

Change voice effects: press and hold it for 3 seconds to change your voice to many funny and interesting voice effects. Under music playing mode, click it once to turn down volume of human voice in the singing.





Warm notes:

- ① How to charge: please insert the included Micro USB charging cable into the Micro USB charging port to charge it when it has low power (low power prompt: "battery is low"). Charging: the red LED light is on. Full charge: the red LED goes out.
- ② How to record on your phone's music apps/or smart TV: firstly, please insert the Micro USB plug into this microphone and insert the 3.5mm interface to your mobile phone or other device's earphone jack. Then open a Karaoke App such as Smule, Youtube,

USING on your mobile phone or other recording Apps, and select your favorite song to start to sing and record in your App. Finally save it in your App.

③ You can choose Bluetooth/wireless to connect this microphone to your device such as smartphone/tablet/smart TV/ a car with Bluetooth function, you can also use a 3.5mm audio cable to connect it to your devices such as headphones.

4. FCC Statement

This device complies with Part 15 of the FCC rules. Operation is subject to the following two conditions: (1) this device may not cause harmful interference, and (2) this device must accept any interference reviewed, including interference that may cause undesired operation.

Changes or modifications not expressly approved by the party responsible for compliance could void the user's authority to operate the equipment.

Note: this equipment has been tested and found to comply with the limits for a Class B digital device, pursuant to Part 15 of the FCC Rules. These limits are designed to provide reasonable protection against harmful interference in a residential installation.

This equipment generates uses and can radiate radio frequency energy and, if not installed and used in accordance with the instructions, may cause harmful interference to radio communications. However, there is no guarantee that interference will not occur in a particular installation. If this equipment does cause harmful interference to radio or television reception, which can be determined by turning the equipment off and on, and user is encouraged to try to correct the interference by one or more of the following measures:

- Reorient or relocate the receiving antenna.
- Increase the separation between the equipment and receiver.
- Connect the equipment into an outlet on a circuit different from that to which the receiver is connected.
- Consult the dealer of an experienced radio/TV technician for help.

Note: this device and its antenna(s) must not be co-located or operation in conjunction with any other antenna or transmitter.

5. RF Exposure Statement

This equipment complies with FCC's RF exposure guidelines. This equipment should be installed and operated with a minimum distance of 20cm between the radiator & your body. This device and its antenna(s) must not be co-located or operation in conjunction with any other antenna or transmitter.

6. Correct Disposal of This Product



(Waste Electrical & Electronic Equipment)

This marking shown on the product or its literature indicate that it should not be disposed with other household wastes at the end of its working life.

To prevent possible harm to the environment or human health from uncontrolled waste disposal, please separate this from other types of wastes and recycle it responsibly to promote the sustainable reuse of material resources. Household user should contact either the retailer where they purchased this product or their local government office, for details of where and how they can take it for environmentally safe recycling.

Business users should contact their supplier and check terms and conditions of the purchase contract. This product should not be mixed with other commercial wastes for disposal.