

WE MAKE RIDERS

CHICOUTIMI, QUÉBEC



CARBON
CHECKERBOARD



TECHNICAL MANUAL

HATCHET PRO 2025+

DEVINCI





ABOUT OUR MANUALS

Like many sports, cycling involves risk of injury and accidents, so you must be fully aware of these risks. Neither the manufacturer, the retailer, nor the person who sold you the bike, nor the people who maintain the trails are responsible for these risks. As you are solely responsible, it is, therefore, essential that you read and fully understand all the parts contained in this manual.

To enjoy maximum safety and enjoyment right from the get go, it is important that you are familiar with your new bike, its handling and its possibilities. It is your duty to maintain your bike well and reduce the risk of injury. Biking can be a dangerous activity, even under the best conditions. These are risks associated with using a bicycle that cannot be predicted or avoided. These are the sole responsibility of the cyclist.

YOUR AUTHORIZED DEVINCI RETAILER

Your authorized Devinci retailer is at your service to guide your choices of bike and accessories which are best suited to the style of biking you wish to perform. This will help you maintain your equipment in good condition so that you can take full advantage of your investment. The staff at your authorized Devinci retailer have the training, experience and tools to carry out the repairs and provide you with reliable advice.

However, your authorized Devinci retailer cannot make decisions for you, and cannot be held responsible for your lack of knowledge, experience, qualification or common sense. However, it will take the necessary time to explain the operation of a component or to help you choose an accessory that meets your specific needs.

For further information, please see the Devinci's User Manual available on www.Devinci.com or ask your authorized Devinci retailer. He will take the time to answer any questions you may have and will advise you with great pleasure.



TABLE OF CONTENTS

FRAME: TECHNICAL SPECIFICATIONS

4

CABLE ROUTING

8

SERVICE KITS

18

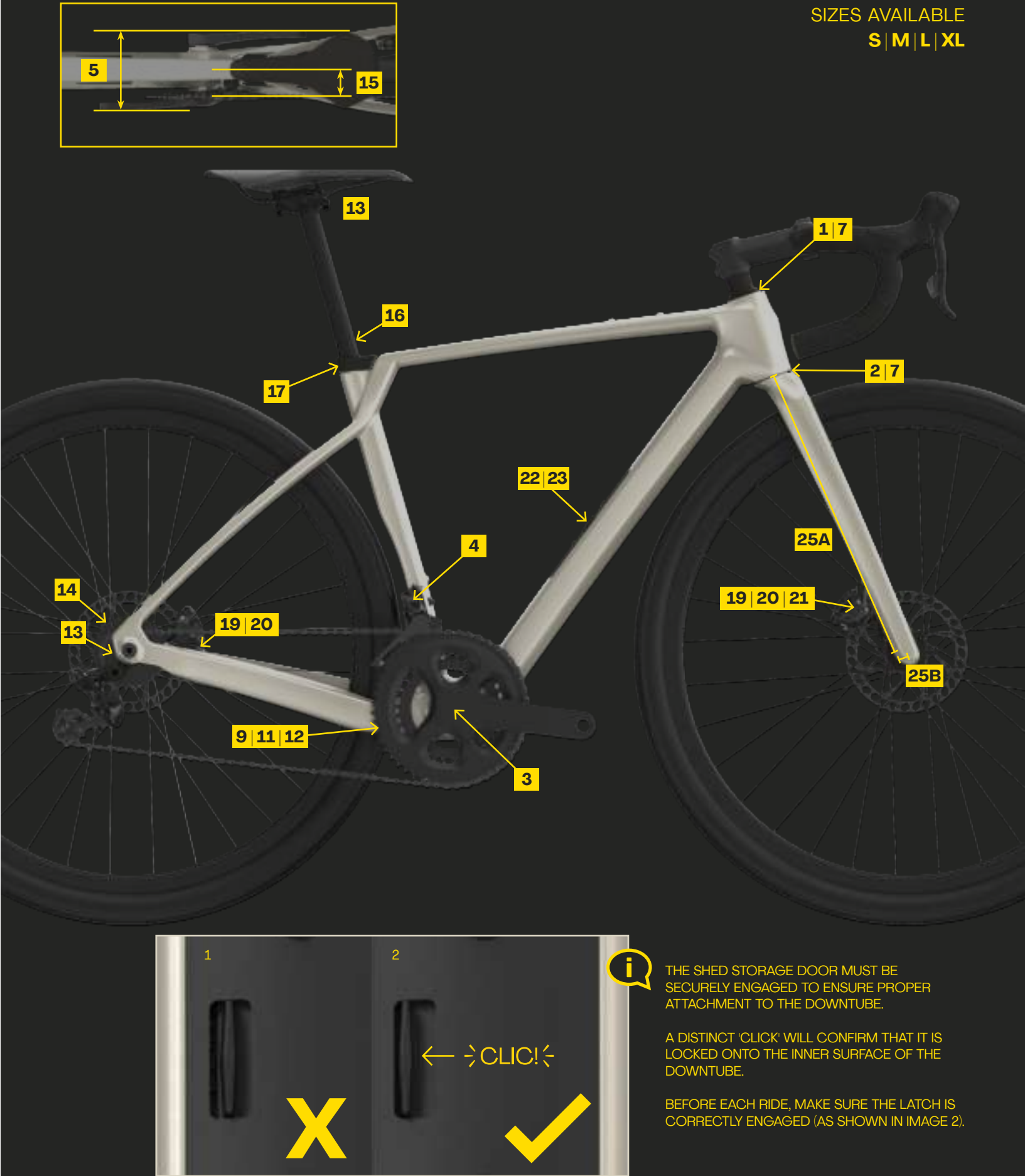


F R A M E

TECHNICAL SPECIFICATIONS

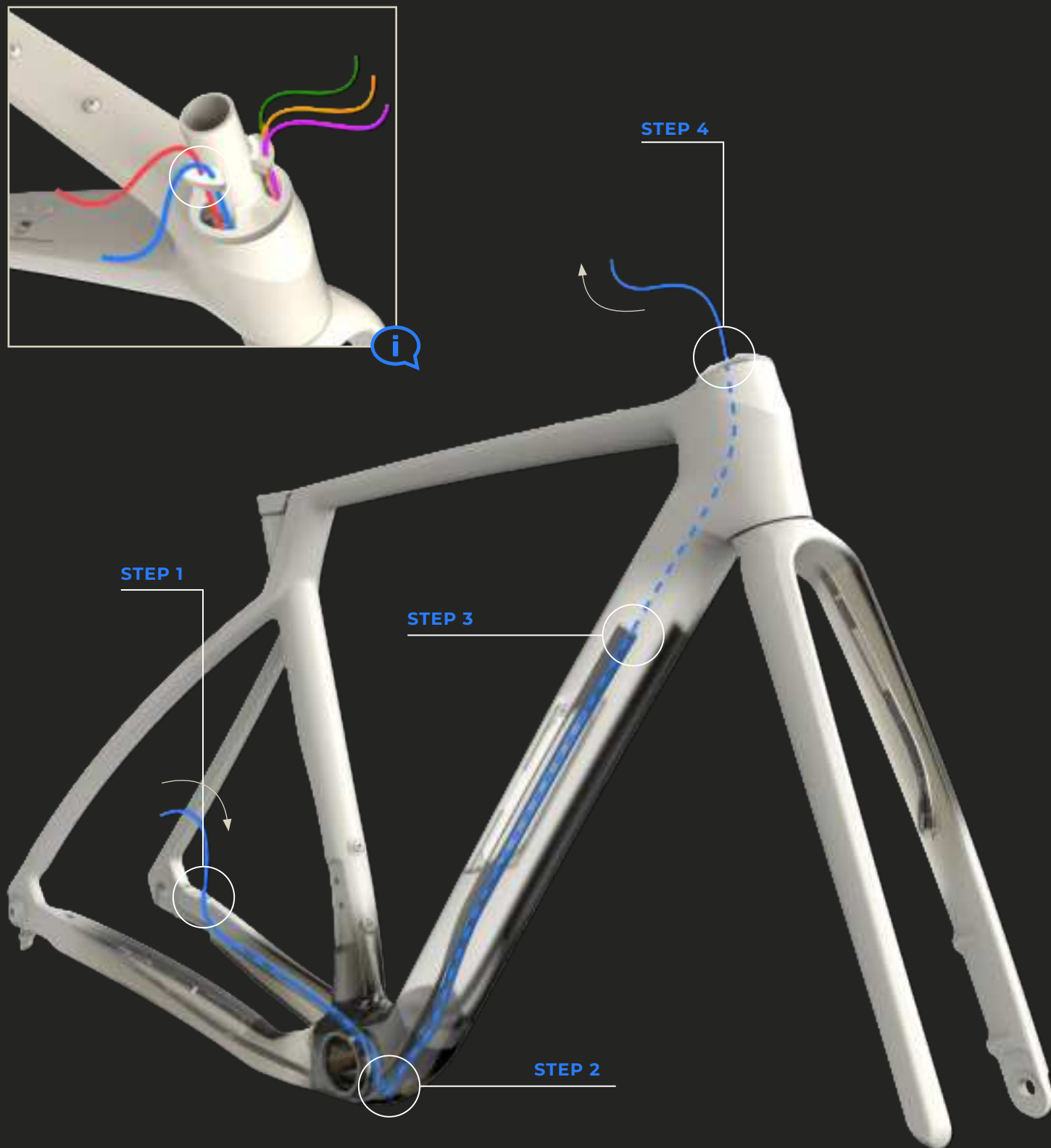
HEADTUBE DIMENSIONS		
1. UPPER (S.H.I.S)	IS52	1.5" IS
2. LOWER (S.H.I.S)	IS52	1.5" IS
BOTTOM BRACKET		
3. STANDARD	BB 386 EVO PF	
4. FRONT DERAILEUR MOUNT	BRAZE-ON	
5. MINIMUM Q FACTOR	148 mm	
FORK		
6. FRONT HUB SPACING (over locknut dimension)	TA 12x100 mm	
7. STEERER TUBE DIMENSIONS (S.H.I.S.)	28.6 40	1-1/8" to 1.5"
TRANSMISSION (1X)		
8. REAR HUB SPACING (over locknut dimension)	TA 12x142 mm	
9. MAX. & MIN. CHAINRING	46T	38T
TRANSMISSION (2X)		
10. REAR HUB SPACING (over locknut dimension)	TA 12x142 mm	
11. MAX. BIGGEST CHAINRING	53T	
12. SMALLEST CHAINRING MAX. & MIN.	46T	33T
TRANSMISSION		
13. SMALLEST COG COMPATIBLE	10T	
14. BIGGEST COG COMPATIBLE	50T	
15. RECOMMENDED CHAINLINE MIN. & MAX.	44.5 mm	47.5 mm
SEAT TUBE & SEAT CLAMP		
16. SEATPOST OUTSIDE DIAMETER	27.2 mm	
17. SEAT TUBE OUTSIDE DIAMETER	31.8 mm	
18. DROPPER POST COMPATIBLE	YES Fully Internal	
BRAKES		
19. BRAKE MOUNT (FRAME & FORK)	Flat Mount 160 mm direct	
20. ROTOR MAX. & MIN. COMPATIBILITY (FRAME & FORK)	160 mm	180 mm
21. BRAKE MOUNT THICKNESS (FORK)	20 mm	
ACCESSORIES		
22. ROOM FOR A BOTTLE (FRAME)	YES 2 BOTTLES	
23. STORAGE SYSTEM	YES SHED	
24. REAR RACK & FENDER MOUNT	YES	
GEOMETRY INPUTS (BASED ON MEDIUM SIZE)		
HATCHET PRO CARBON		
25. FORK (AXLE-TO-CROWN [A] & OFFSET [B])	A. 395	B. 50
26. FRONT & REAR WHEEL GEOMETRY	708	
27. FRONT & REAR MAX ETRTO	42-622	
28. TIRE CLEARANCE	700c x 45 mm	

*** DISCLAIMER:** We are testing many different tires to establish a clearance number that cover a wide spectrum of tires with appropriate frame clearance. However, it is impossible for us to test all tires and rim combination available on the market, so be mindful that some combinations may result in slight rubbing if higher than 45mm in actual width.



A close-up, low-angle shot of a bicycle handlebar and stem. The handlebar is wrapped in black tape. The stem is black and features a blue logo. The background is dark and out of focus. The text "CABLE ROUTING" is overlaid in white, bold, sans-serif capital letters.

CABLE ROUTING



LEGEND

- █ Rear brake housing
- Housing outside the frame
- - - Housing inside the frame



CABLE ROUTING

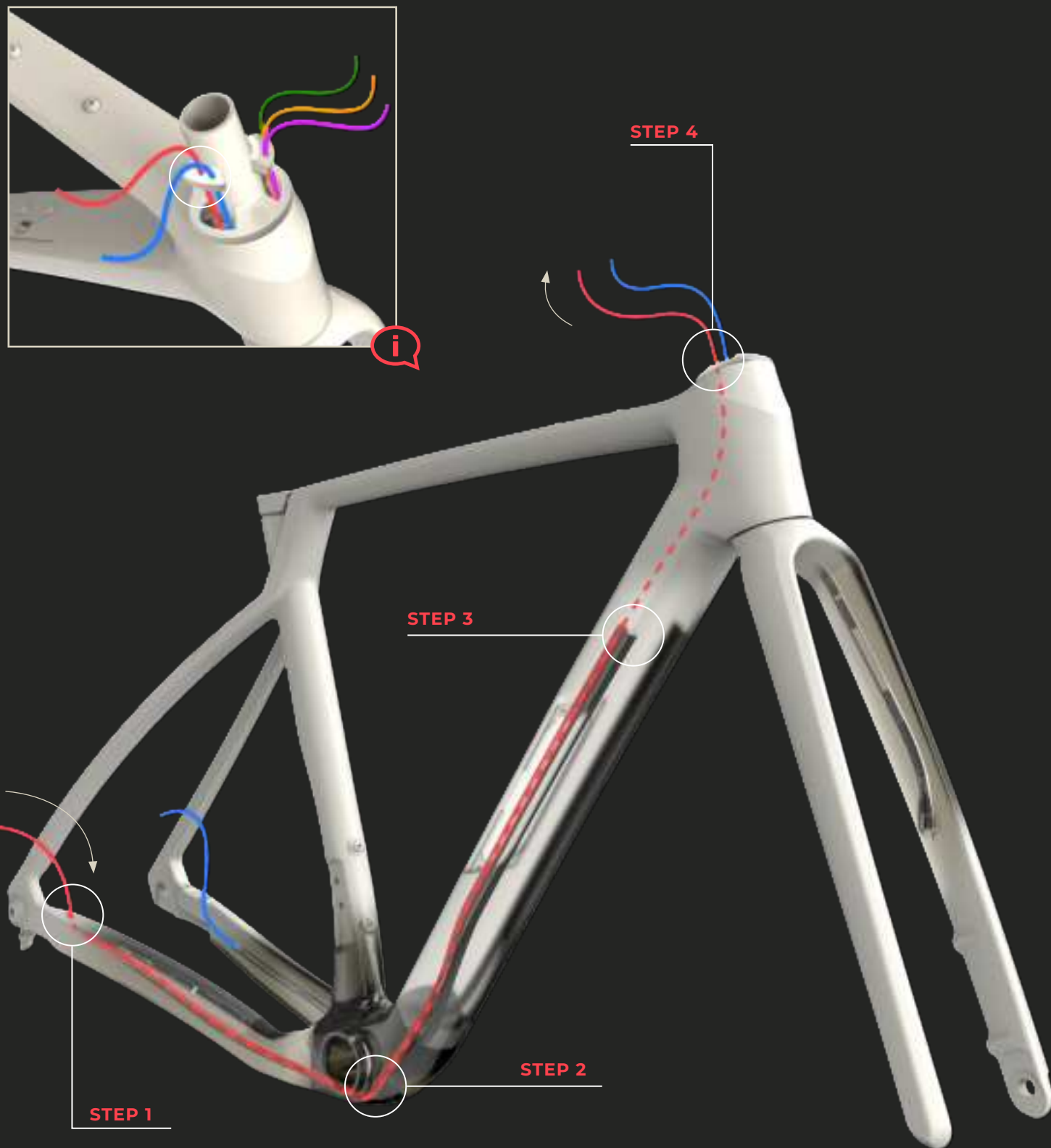


REAR BRAKE HOUSING

- STEP 1** | Insert the rear brake housing through the guide located on the top of the chainstay, on the left side.
- STEP 2** | Route the rear brake housing through the frame using the straw.
- STEP 3** | Pull the housing out through the head tube.
- STEP 4** | Make sure to route the housing through the right cavity of the headset.



The rear brake housing must occupy the upper cavity of the rubber guide to be installed on the headset. Make sure the housings remain parallel throughout the process to prevent friction with the fork.



LEGEND

- Rear derailleur housing
- Housing outside the frame
- Housing inside the frame

CABLE ROUTING

REAR DERAILLEUR HOUSING

- STEP 1** | Insert the rear derailleur housing through the cavity located on the upper right surface of the chainstay.
- STEP 2** | Route the rear derailleur housing through the frame using the straw.
- STEP 3** | Pull the housing out through the head tube.
- STEP 4** | Make sure to route the housing through the right cavity of the headset.

i The rear derailleur housing must occupy the lower cavity of the rubber guide to be installed on the headset. Ensure the housings remain parallel throughout the process to prevent friction with the fork.



LEGEND

- Seatpost housing
- Housing outside the frame
- Housing inside the frame

CABLE ROUTING

SEATPOST HOUSING

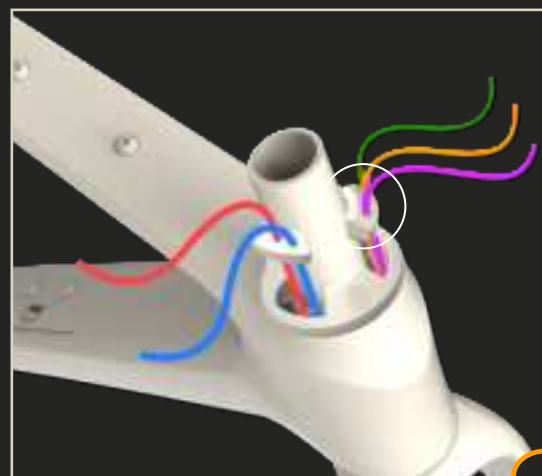
STEP 1 | Insert the seatpost housing into the head tube through the cavity located on the left side.

i The seatpost housing must occupy the lower (smaller) cavity of the left rubber guide to be installed on the headset. Ensure the housings remain parallel throughout the process to prevent friction with the fork.

STEP 2 | Slide the seatpost housing into the upper left straw located in the downtube.

STEP 3 | Gently slide the housing through the straw.

STEP 4 | Pull the housing out of the frame through the seat tube.



STEP 2

STEP 3

STEP 1

LEGEND

- Seatpost housing
- Housing outside the frame
- Housing inside the frame



CABLE ROUTING



FRONT DERAILLEUR HOUSING

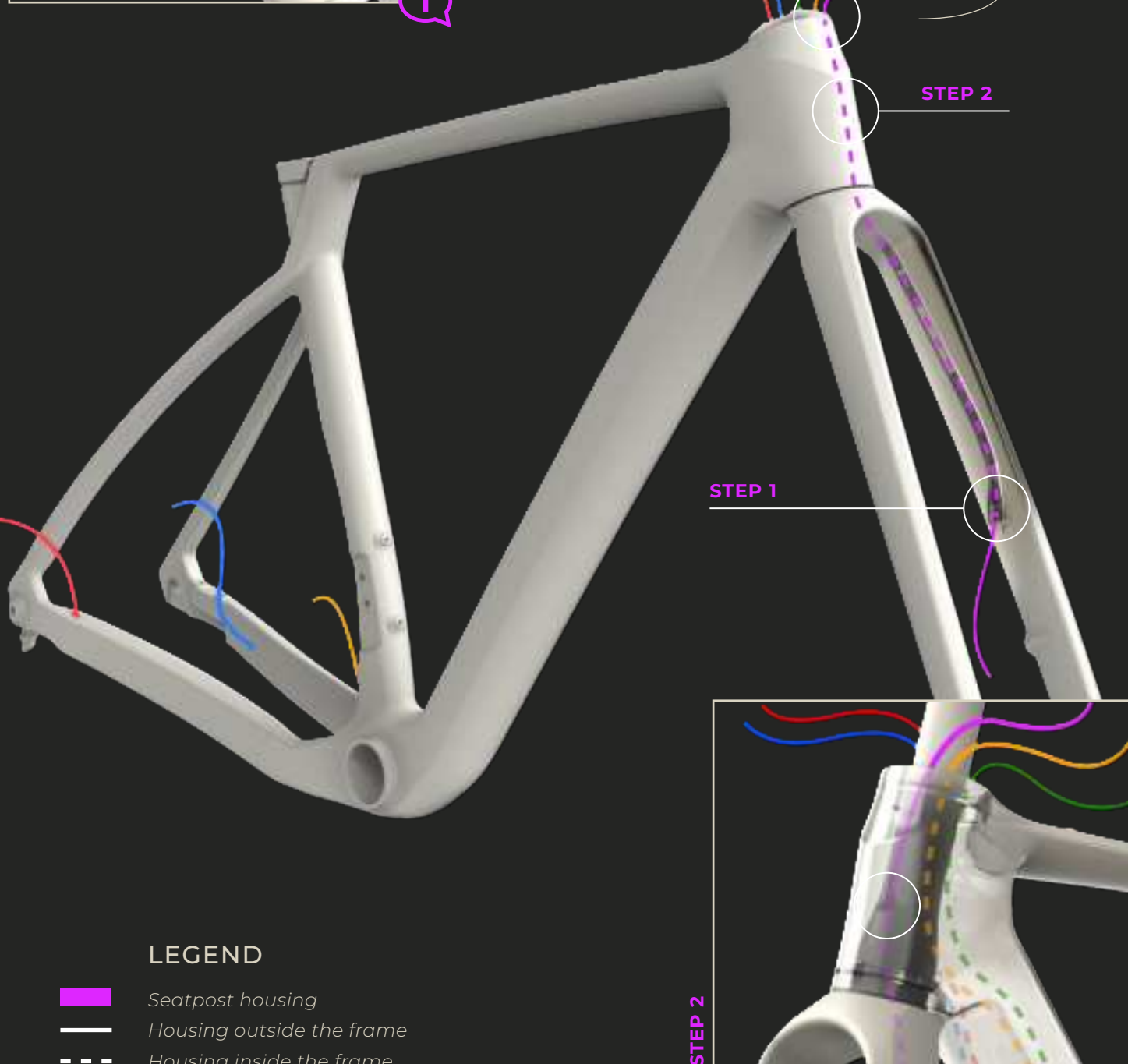
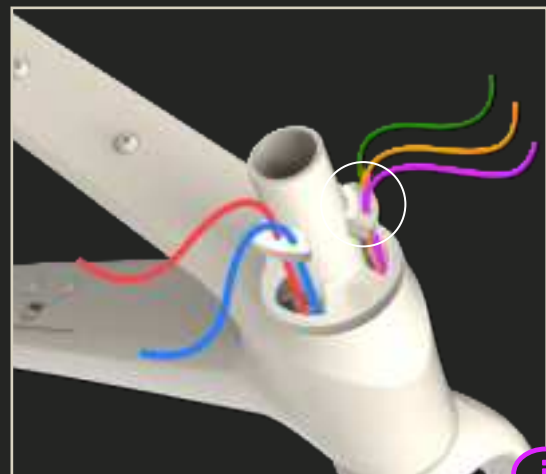
STEP 1 | Insert the front derailleur housing into the downtube through the cavity located at the bottom of the seat tube, just above the bottom bracket.

STEP 2 | Slide the front derailleur housing into the downtube through the designated straw.

STEP 3 | Pull the housing out through the left cavity of the headset.



The front derailleur housing must occupy the central cavity of the left rubber guide to be installed on the headset. Ensure the housings remain parallel throughout the process to prevent friction with the fork.



STEP 3

STEP 2

STEP 1

STEP 2

LEGEND

- Seatpost housing
- Housing outside the frame
- - - Housing inside the frame



CABLE ROUTING



FRONT BRAKE HOUSING

STEP 1 | Insert the housing through the left cavity at the bottom of the fork.

STEP 2 | Insert the front brake housing into the fork through the straw.

STEP 3 | Pull the front brake housing out through the left cavity of the headset.



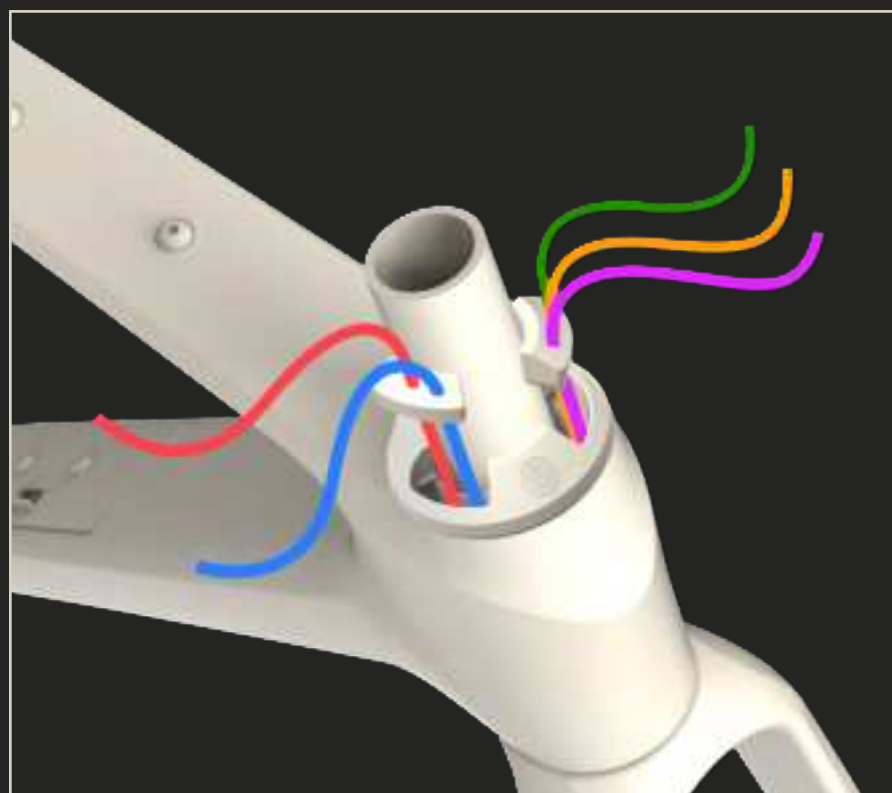
The front brake housing must occupy the upper cavity of the left rubber guide to be installed on the headset. Ensure the housings remain parallel throughout the process to prevent friction with the fork.



CABLE ROUTING OVERVIEW

LEGEND

- Rear brake housing
- Rear derailleur housing
- Seatpost housing
- Front brake housing
- Front derailleur housing
- Routing outside the frame
- - - Routing inside the frame

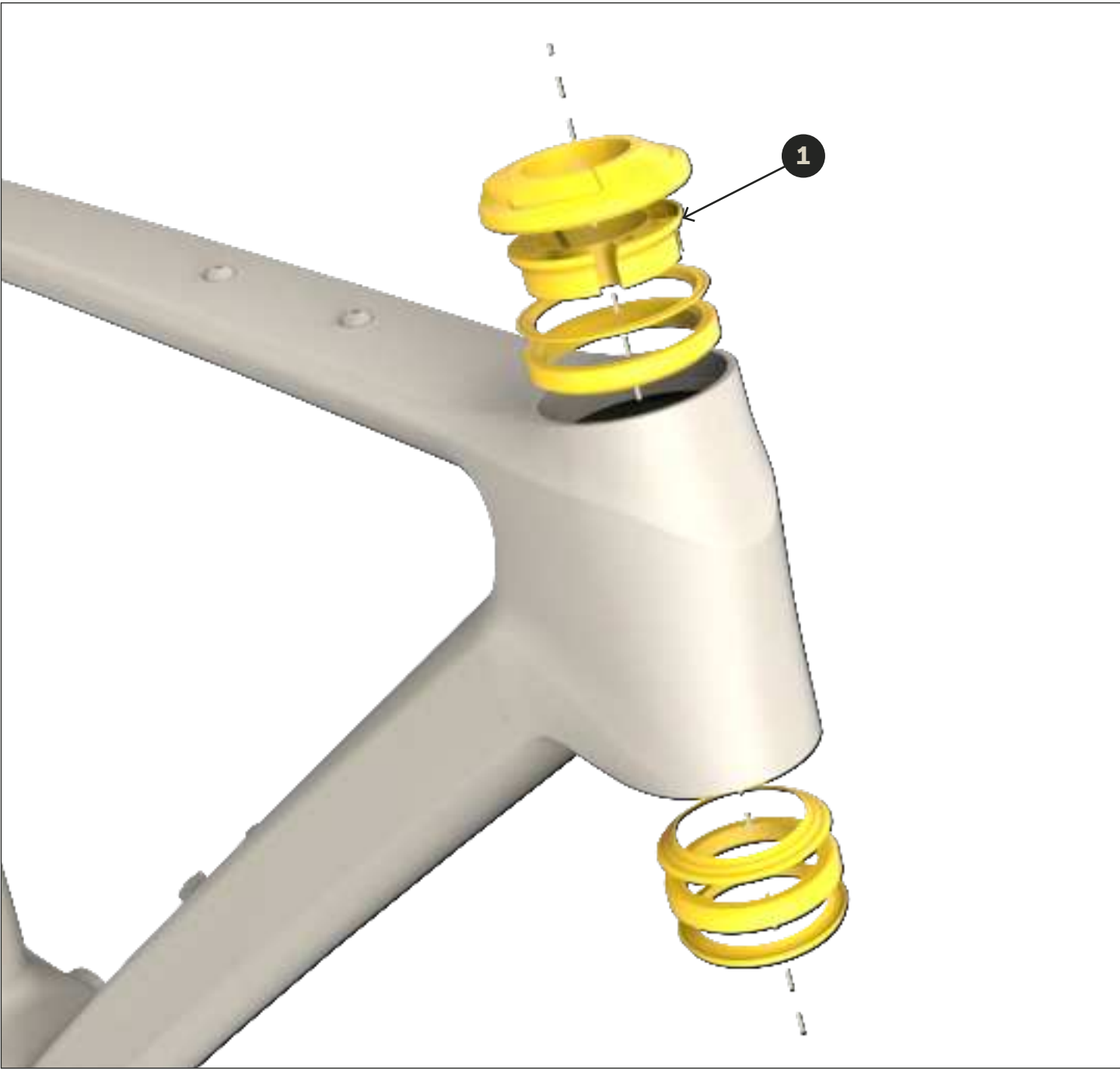


A dark blue road bicycle is shown from a side-on perspective, angled slightly upwards. Two clear plastic water bottles are mounted on the frame. The bottle on the left has the number '1987' printed on it in yellow and black. The bottle on the right has 'V. DAVINCI' printed on it. The bicycle has a sleek frame, thin tires, and a chain drive. The background is dark and out of focus.

SERVICE KITS

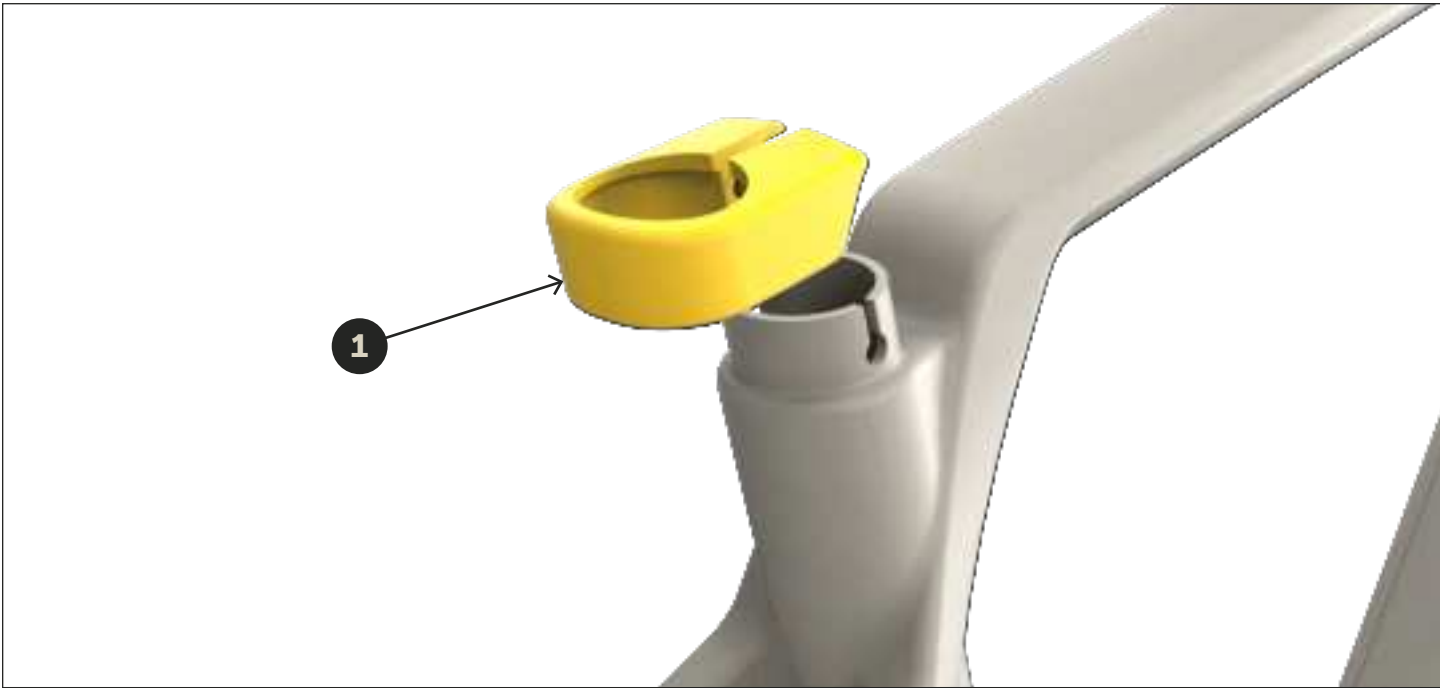
KFC07801 | HEADSET

ITEMS	PART #	DESCRIPTION	QTY
1	MAAH24003	Head set Accros AIF-557	1



KFC07802 | SEATCLAMP

ITEMS	PART #	DESCRIPTION	QTY
1	MASC24001	Seat Clamp	1



SERVICE PART - ROBERT AXLE PROJECT AVAILABLE AT [ROBERTAXLEPROJECT.COM](https://robertaxleproject.com)

IDENTIFICATION	SPECIFICATIONS
12MM THRU AXLE FOR TRAINER 	160 to 172mm with 1.0 Thread The true length of the axle shaft is 172 mm, but can be shortened using the included spacers – a flat spacer and a tapered X-12 spacer. This allows for axle lengths of 162, 167 or 172 mm. Please note: Thru-axle lengths do not equal hub standards. An axle has to be longer than the hub to fit in the frame. A 12x142 hub does not equal a 142 mm long axle. SKU: TRA213
12MM THRU AXLE FOR KID TRAILER 	The true length of the axle shaft is 172 mm, but can be shortened using the included spacers – a flat 5 mm spacer and a tapered 5 mm X-12 spacer. This allows for axle lengths of 162, 167, or 172 mm. Please note: Thru-axle lengths do not equal hub standards. An axle has to be longer than the hub to fit in the frame. A 12x142(+) hub does not equal a 142mm long axle. SKU: KID213



KFC07803 | PROTECTORS

ITEMS	PART #	DESCRIPTION	QTY
1	MACP24006	FD Hanger Cover Open Road	1
2	MACP24007	CS Protecteur Vinyl Clear	1



KFC07804 | AXLES

ITEMS	PART #	DESCRIPTION	QTY
1	MAAX24001	Front Thru Axle M12x1.0x100mm (118.5)	1
2	MAAX24003	Rear Thru Axle M12x1.0x165.5mm UDH	1





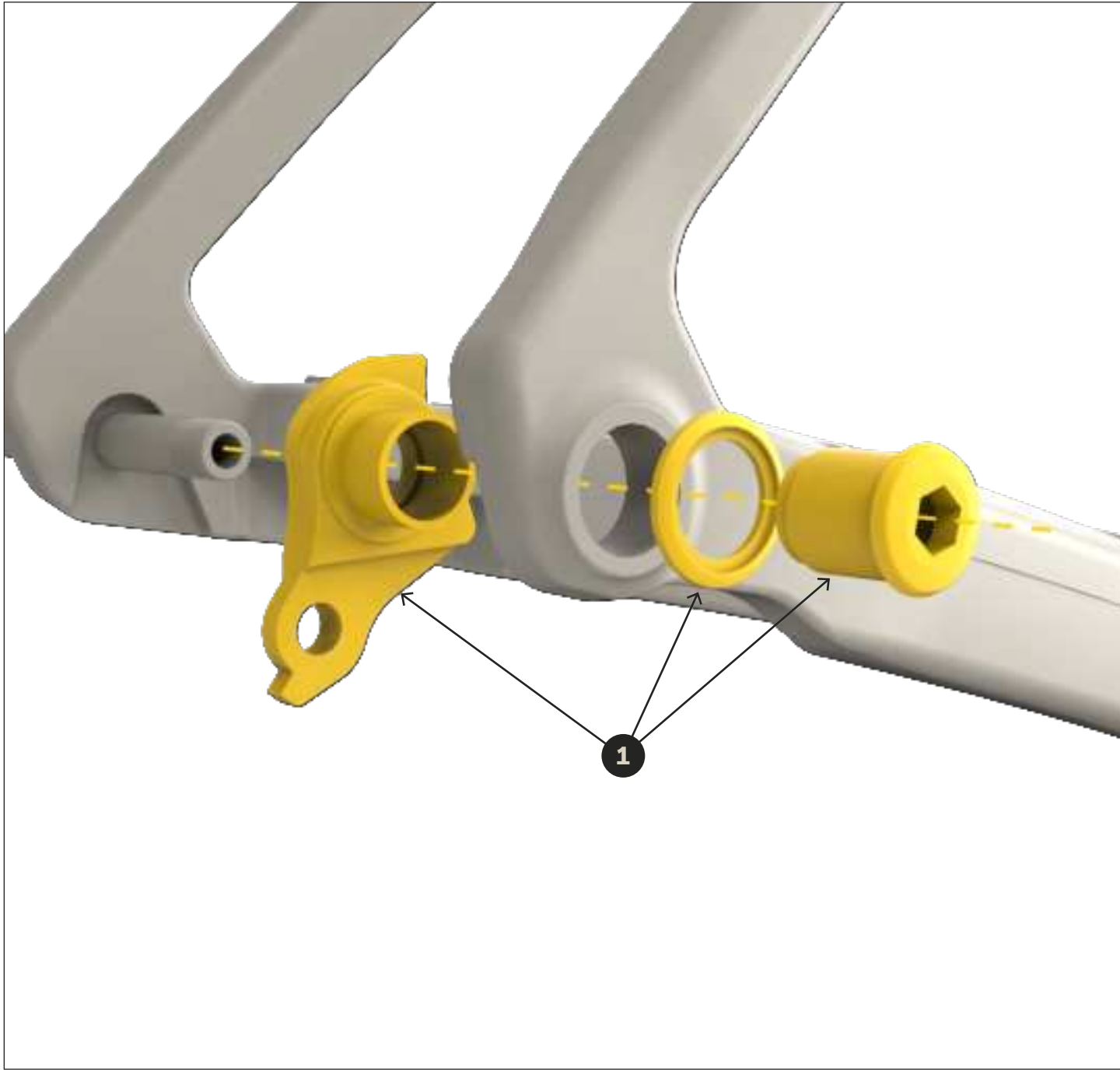
KFC07805 | FRONT DERAILLEUR HANGER

ITEMS	PART #	DESCRIPTION	QTY
1	MFD21005	FD Hanger Open Road	1



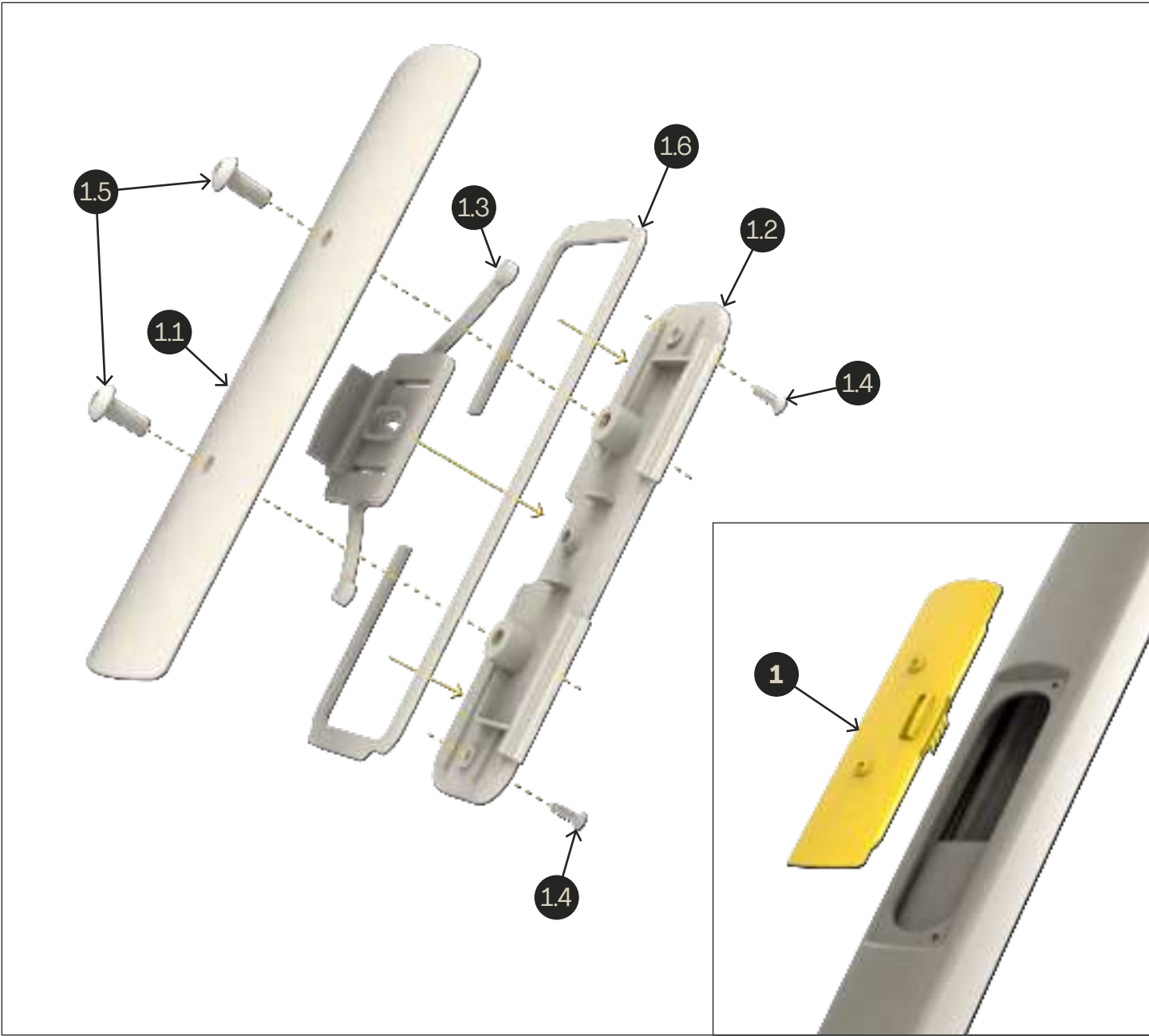
KFC07806 | UNIVERSAL DERAILLEUR HANGER

ITEMS	PART #	DESCRIPTION	QTY
1	MFD23003	UDH Hanger w/25mm washer	1



KFC09006 | 'SHED' STORAGE ASSEMBLY

ITEMS	PART #	DESCRIPTION	QTY
1	MPAC24001	PORTE DE RANGEMENT ASSEMBLÉE	1
1.1	MFP24027	SYSTEM DOOR	1
1.2	MFP24028	MECANISM COVER	1
1.3	MFP24029	SYSTEM LOCK	1
1.4	MFV097132	FLAT HEAD THREAD FORMING SCREW FOR PLASTIC, #4 X 3/8"	2
1.5	MFV07003-01	ALLEN BUTTON SCREW M5x0.8 X 12	2
1.6	MFP24030	SYSTEM SEAL	1



KFC09007 | TOOL BAG FOR SHED STORAGE



ITEMS	PART #	DESCRIPTION	QTY
1	MFP24031	Tool bag	1



A low-angle, close-up shot of a person riding a bicycle on a paved road. The focus is on the rear wheel and the rider's leg in a white sock and black shoe. The road surface is light-colored and shows some texture. A dark shadow of the bicycle and rider is cast onto the road in the foreground. The word 'WARRANTY' is written in large, white, sans-serif capital letters across the middle of the image.

WARRANTY

WARRANTY COVERAGE

All Devinci frames are covered by a manufacturer’s warranty against defects in materials and workmanship for a specified period, as detailed below, starting from the date of purchase. Any parts replaced or repaired under this warranty are covered for the remaining duration of the original warranty period.

The bicycle owner must provide proof of purchase to make a warranty claim. Replacement parts are subject to availability within Devinci’s inventory at the time of the claim. In some cases, the color, features, and/or model may differ from the original part. At Devinci’s discretion, certain costs may apply when processing a warranty replacement or repair, including:

- Shipping fees
- Additional labor costs associated with the installation or repair of a part
- Costs of replacing parts that are worn out or obsolete at the time of the claim.

WARRANTY PERIOD

→ For the original purchaser:

- Aluminum frames are covered for the lifetime of the bicycle's useful life.
- Carbon fiber frames are covered for five (5) years from the original date of purchase.

→ For subsequent owners:

- Frames are covered for three (3) years from the original date of purchase.

→ Paint and decals are covered for a period of 1 year.

→ Pivots (including bearings, bolts and axis) are covered for 1 year.

Components assembled on Devinci frames are guaranteed by their respective manufacturers. Contact your authorized Devinci retailer for more information regarding the applicable warranty.

WARRANTY EXCLUSIONS

At Devinci’s discretion, the warranty may not apply in the following situations:

1. The bicycle was not purchased at an authorized Devinci retailer;
2. The bicycle was not entirely assembled by an authorized Devinci retailer;
3. The bicycle was not repaired by an authorized Devinci retailer;
4. The instructions contained in the user’s manual and/or the technical manual were not entirely respected;
5. Periodic inspection/maintenance recommended in the user’s manual and/or the technical manual were not entirely respected;
6. Incompatible parts/components were assembled on the bicycle. Compatible parts includes the original parts and those who comply to the technical manual's recommendations;
7. Paint was damaged in relation to the installation or removal of an adhesive frame protector;
8. The damages were caused by a case of force majeure, such as:
 - An accident, impact or crash;
 - Abusive, abnormal or excessive use, neglect.
 - Intensive use.
 - Improper or repeated use of mechanical lift, car racks or any other mean of bike transport.

Using a bike in competitions, or in environments or types of terrain/activities other than those for which the bike is designed are some examples of intensive or abusive use.9. Using a bike previously damaged by a case of force majeure.

10. The frame and/or its components have been modified (ex: polishing, grinding, sanding, strain harde-



ning, shot peening, structural or mechanical modifications, etc.)

11. The frame is inadequate (size, model) considering the user size.
12. The damages are caused by normal wear and tear, including those caused by natural material fatigue mechanisms.

LIMITATION OF LIABILITY

The present warranty is an integral warranty, complete and final, for Devinci frames. Devinci does not give authorization to any other person, including the authorized Devinci retailers, to assume or grant, expressly or implicitly, any or all addition(s) or extension(s) to the warranty specified herein. Any other obligation or responsibility expressed by any other person(s) and any demonstration or illustration of Devinci frames is in no way linked to Devinci and is furthermore excluded from this warranty. Devinci assumes no liability in case of any property damage, moral or bodily injury to the user, the buyer or any other person(s), resulting from the use of a devinci frame or one of its components.

Except as limited or expressly forbidden by law, regarding any other condition or guarantee, express or implied, based in law, established commercial customs and usage, including, but not limited to, guarantee of merchantability or adaptation to a specific end, devinci declines any responsibility for any amount exceeding the actual purchase price of the bicycle nor for any particular, accessory or consecutive damages that may occur in connection with said bicycle.

With regard to the exercising of rights resulting from the present warranty, the buyer of a devinci frame agrees to elect domicile in the judicial district of chicoutimi, in the province of quebec, canada, as an appropriate place for the hearing of all claims or legal proceedings.

RIDER ASSISTANCE PROGRAM

For those moments when life takes an unexpected turn and your situation isn't covered by our warranty, Devinci’s Rider Assistance Program has you covered. Whether it’s a crash, accidental damage, or just plain bad luck, we offer a discount below the original retail price to help you get back on your bike as soon as possible. This program is accessible through our customer service department or any Authorized Devinci Dealer.

WARRANTY CLAIM

As mentioned in our warranty policies, the frames of Cycles Devinci inc. are guaranteed against all manufacturing defects to the first owner. To start the warranty process, please refer to your local Devinci authorized dealer with your proof of purchase.

For more information concerning our different contact informations, go to www.devinci.com/contact-us



Head Office

1555 Manic
Chicoutimi (Quebec) Canada
G7K 1G8

www.devinci.com