



#### PLEASE NOTE:

All acrylic parts have protective film applied on both sides.

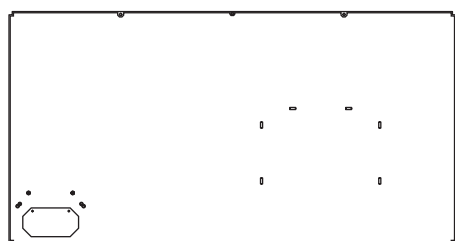
Some pieces appear with slightly translucent film, this will need to be removed before assembly.

Ensure all engraved lines face outwards.

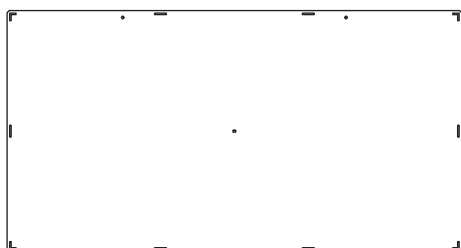
## INSTRUCTIONS FOR: LEGO® Imperial Star Destroyer (75252) Display Case

LDS515

### Parts list:



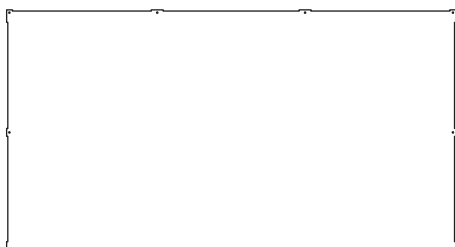
1 - PRT1



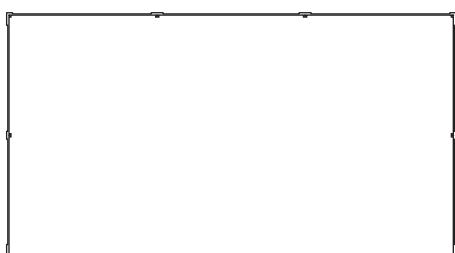
2 - PRT2



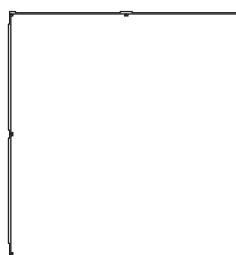
3 - PRT3



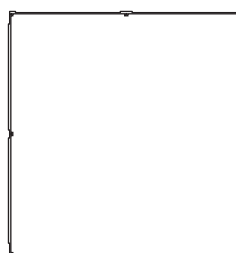
4 - PRT4



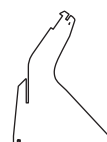
5 - PRT5



6 - PRT6



7 - PRT7



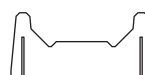
8 - PRT8



9 - PRT9



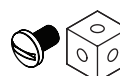
10 - PRT10



11 - PRT11



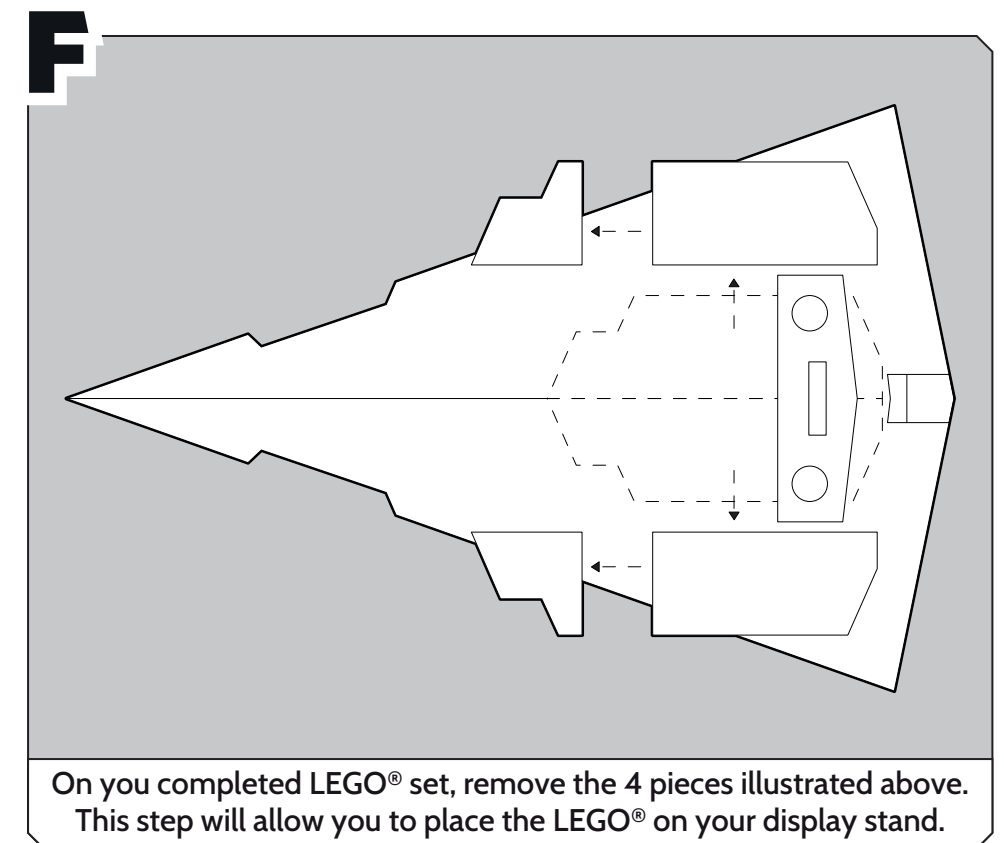
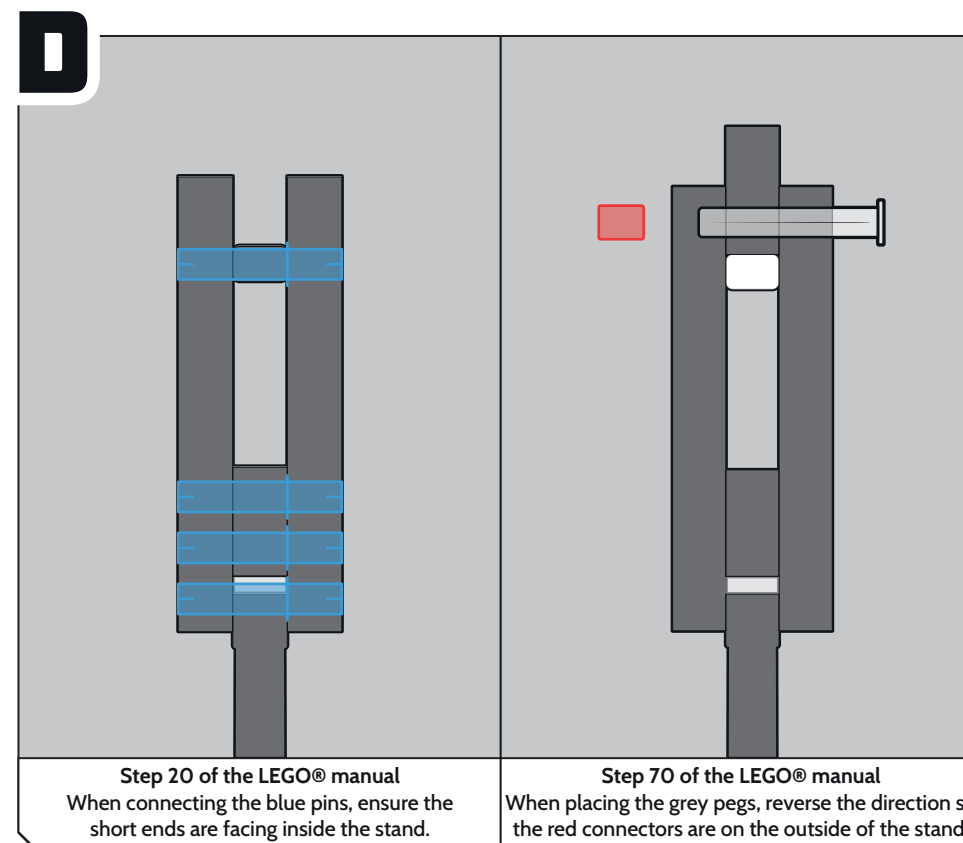
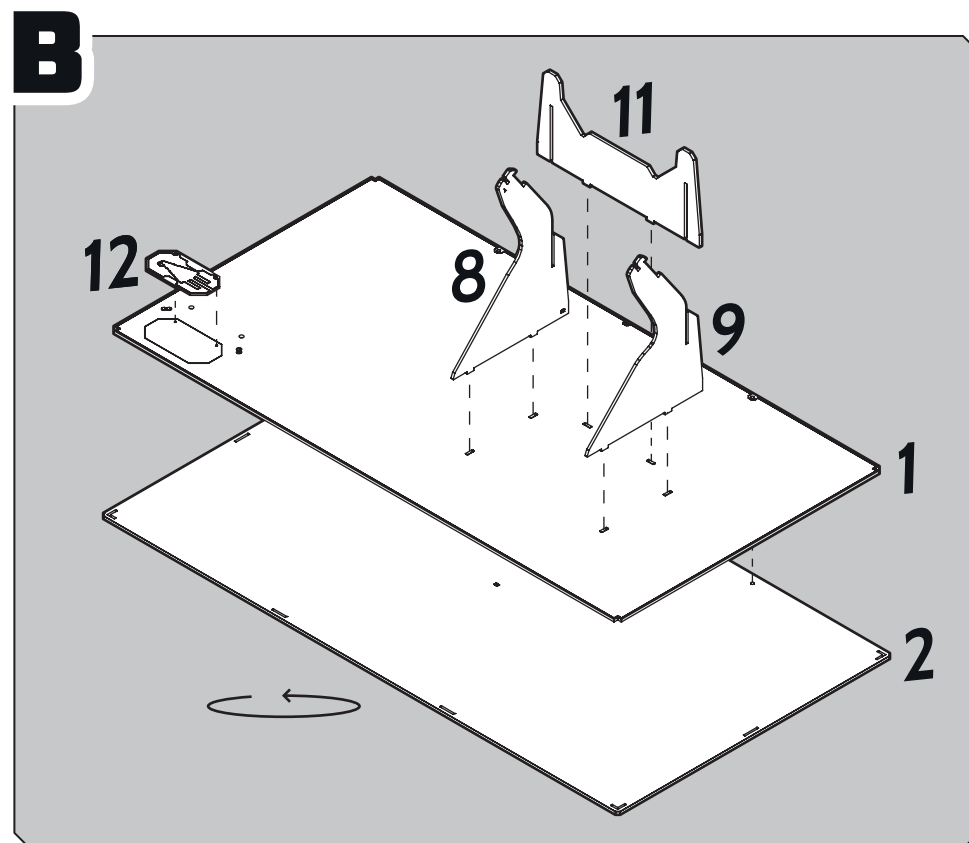
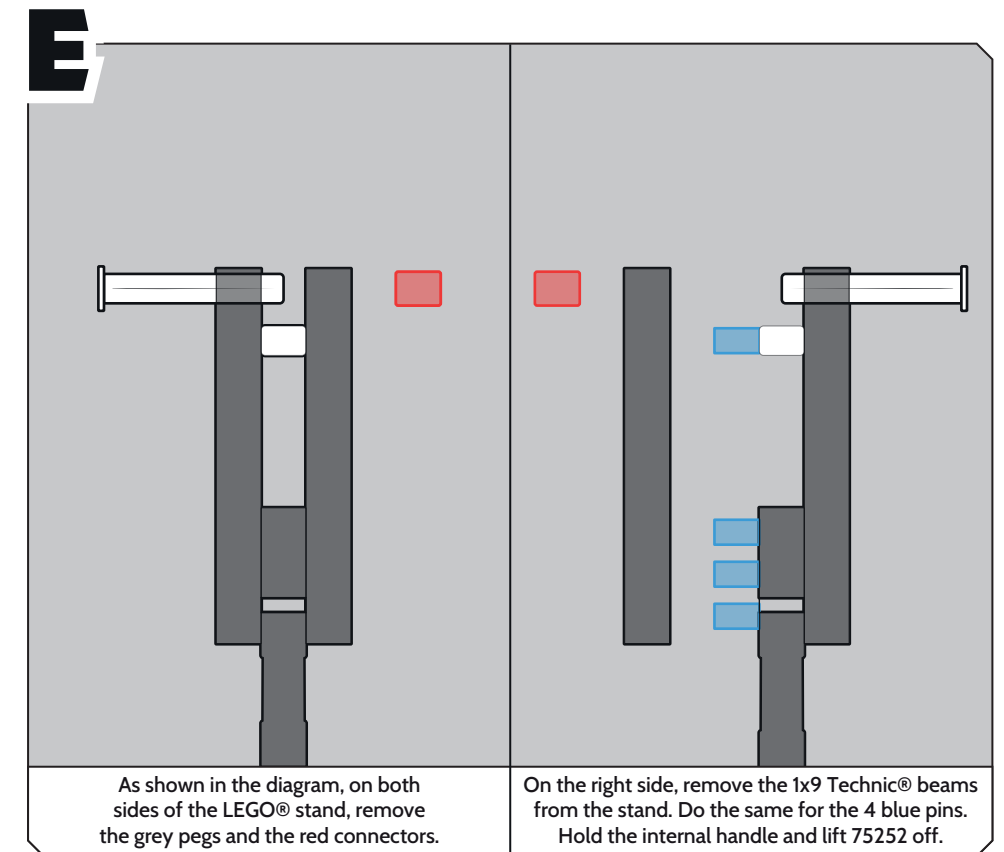
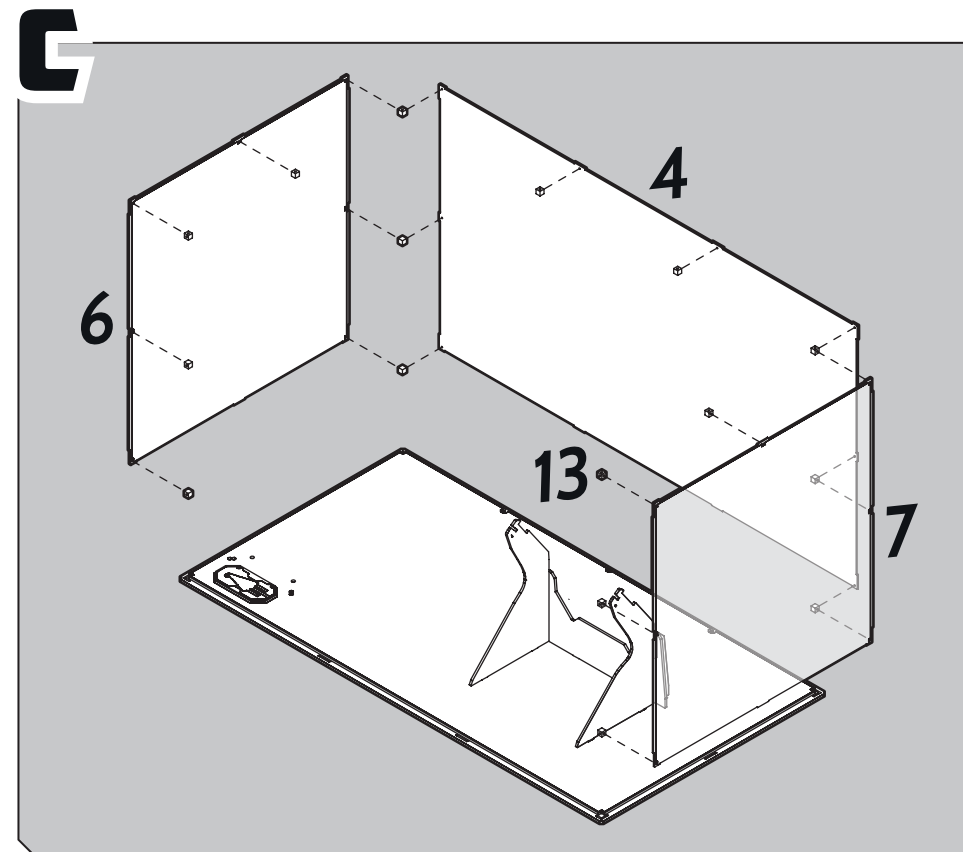
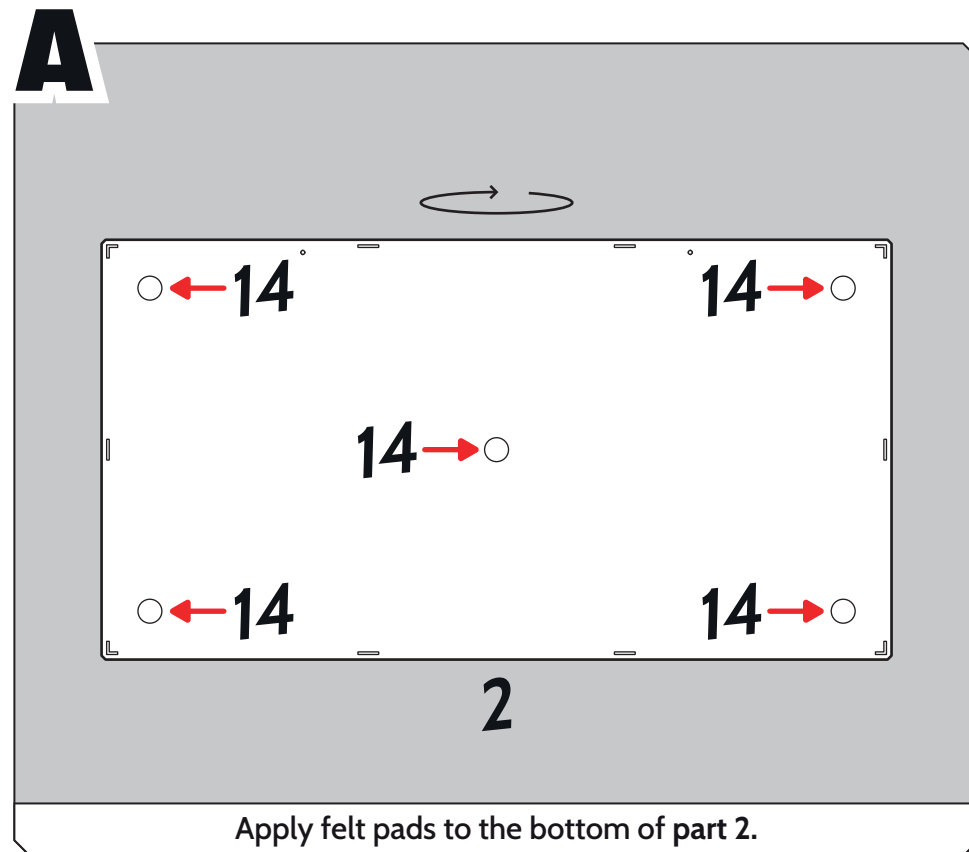
12 - PRT12



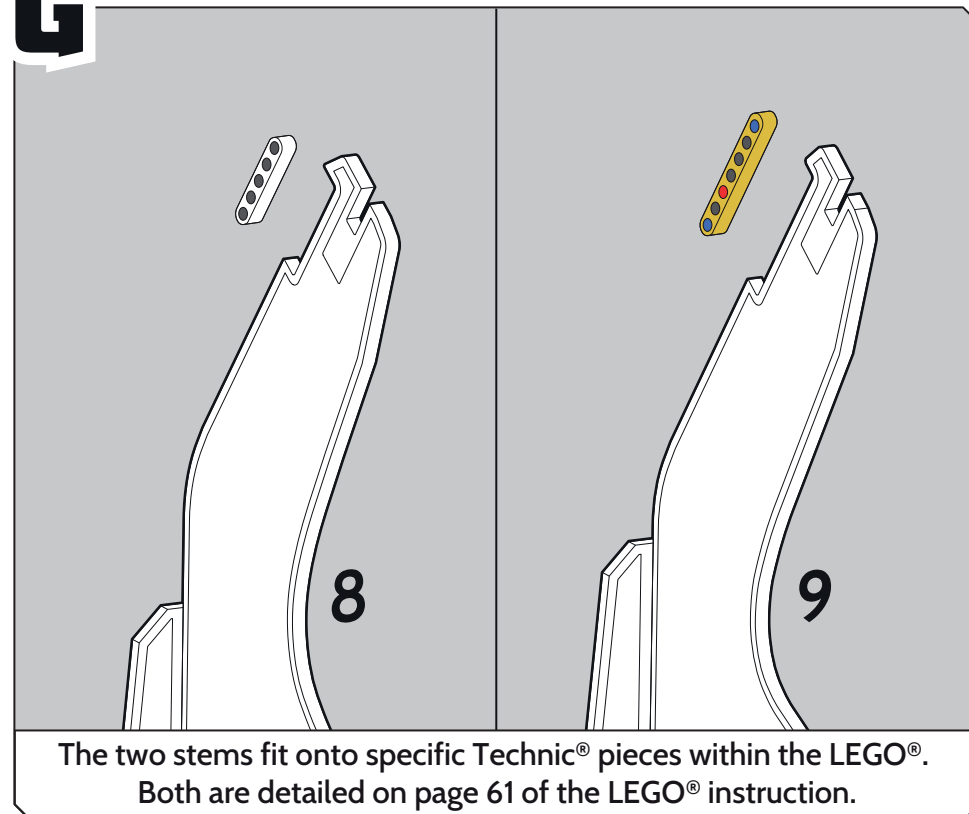
13 - CPT3 (9x packs)



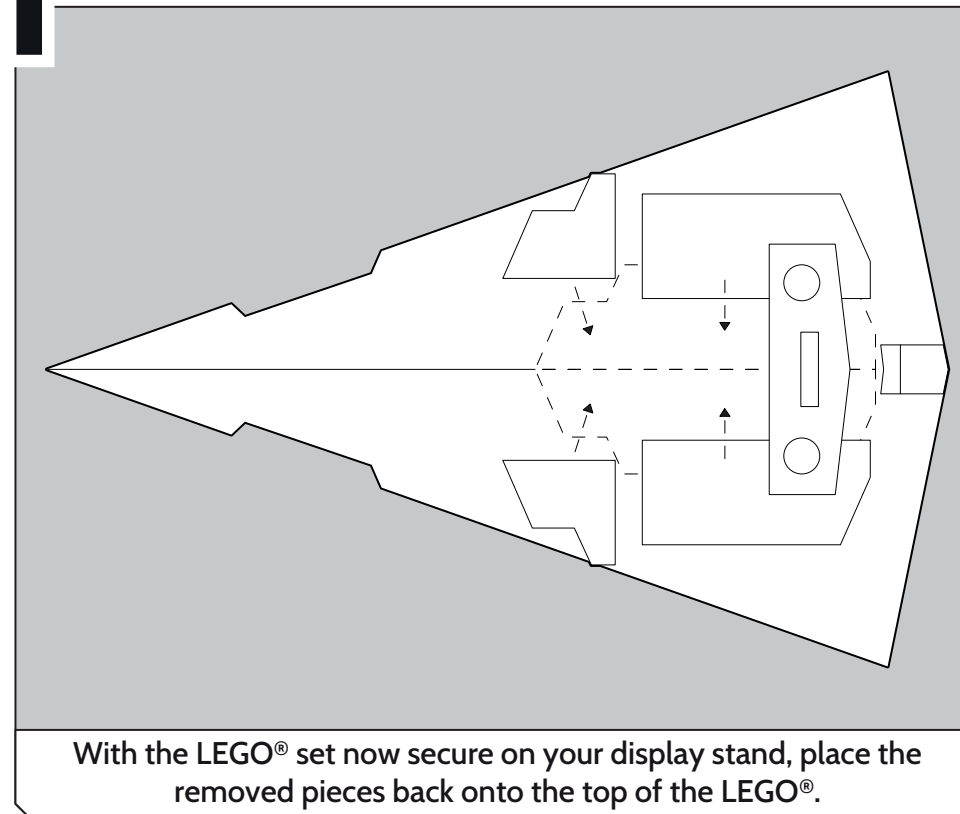
14 - CPT2 (1x pack)



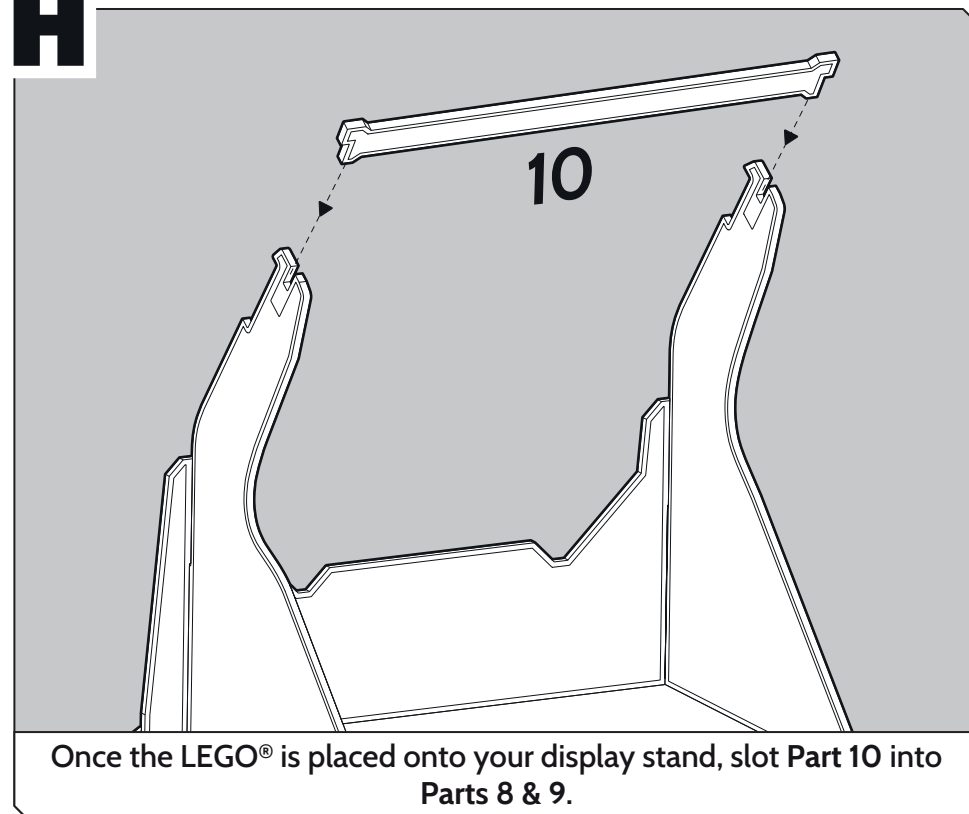
**G**



**I**



**H**



**J**

