

# 印刷说明

材质：双铜版纸

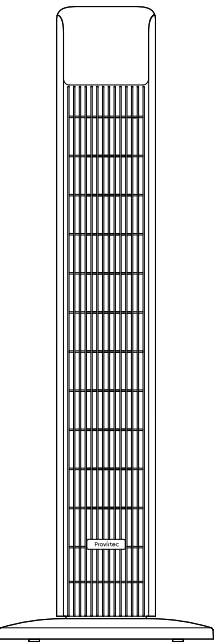
对折尺寸：105x150mm

装订方式：双面九折页

注意：此页不做印刷



# User Manual



TF-01

## Contents

1. Important Safety Instructions .....	1
2. Package Contents .....	3
3. Specification .....	3
4. Introduction .....	4
5. Assembly Instructions .....	5
6. Controls & Indicators .....	7
7. Cleaning & Maintenance .....	11
8. App Download Instructions .....	12
9. Troubleshooting .....	13
10. Notice .....	15
11. Warranty .....	16
12. Contact Us .....	16

## 1. Important Safety Instructions

Read and save these safety instructions before use.

**General Safety**

1. Please strictly follow the instructions in this user manual when using the product to avoid accidents such as fire, electric shock, or personal injury.

2. This product is suitable for individuals aged 12 and above. Children or individuals with sensory impairments or intellectual disabilities must be supervised by guardians when using this product.

3. The product is intended for indoor ventilation and should be placed on a flat floor. Do not use it outdoors or to discharge hazardous and explosive substances and vapors.

**Operation Safety**

1. For your safety, make sure your hands are dry when using this product.

2. Do not cover or insert any foreign objects into the air inlet or the air outlet, as it may damage the product, resulting in electric shock, or fire.

3. To reduce the risk of fire or electric shock, do not use the product with any solid-state speed control device.

**Electricity Safety**

1. The input voltage of the product is 120V AC, 60Hz. Make sure that the voltage meets the requirements before use.

2. The product has a polarized plug (one blade is wider than the other). To reduce the risk of electric shock, the plug can only be inserted into a polarized outlet in one way. If the plug does not fit completely into the outlet, please reverse the plug. If it still does not fit, contact a qualified electrician. Do not attempt to damage this safety feature.

3. If the product is damaged or malfunctions during operation, please contact customer service or a qualified electrician for repair or replacement. Do not attempt to repair or replace the product yourself.

**Warning:**

1. **INGESTION HAZARD:** This product contains a button cell or coin battery.

2. **DEATH** or serious injury can occur if ingested.

3. A swallowed button cell or coin battery can cause Internal Chemical Burns in as little as 2 hours.

4. **KEEP** new and used batteries **OUT OF REACH** of CHILDREN.

5. Seek immediate medical attention if a battery is suspected to be swallowed or inserted inside any part of the body.

**The Statement of Battery Warning**

1. Remove and immediately recycle or dispose of used batteries according to local regulations and keep away from children. Do NOT dispose of batteries in household trash or incinerate.

2. Even used batteries may cause severe injury or death.

3. Call a local poison control center for treatment information.

4. The battery model of the remote control is CR2025 and the rated voltage is 3V.

5. Non-rechargeable batteries are not to be recharged.

6. Do not force discharge, recharge, disassemble, heat above (manufacturer's specified temperature rating) or incinerate. Doing so may result in injury due to venting, leakage or explosion resulting in chemical burns.

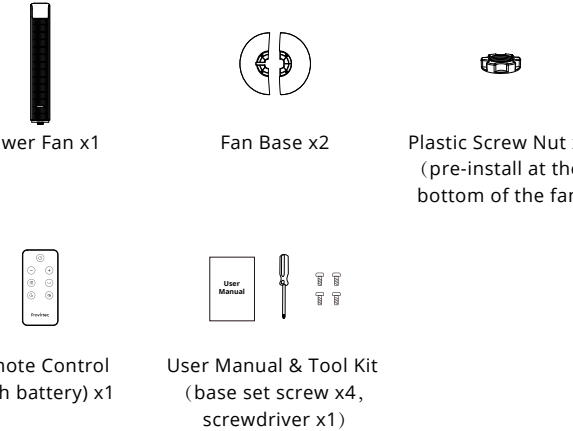
7. Ensure the batteries are installed correctly according to polarity (+ and -).

8. Do not mix old and new batteries, different brands or types of batteries, such as alkaline, carbon-zinc, or rechargeable batteries.

9. Remove and immediately recycle or dispose of batteries from equipment not used for an extended period of time according to local regulations.

10. Always completely secure the battery compartment. If the battery compartment does not close securely, stop using the product, remove the batteries, and keep them away from children.

## 2. Package Contents

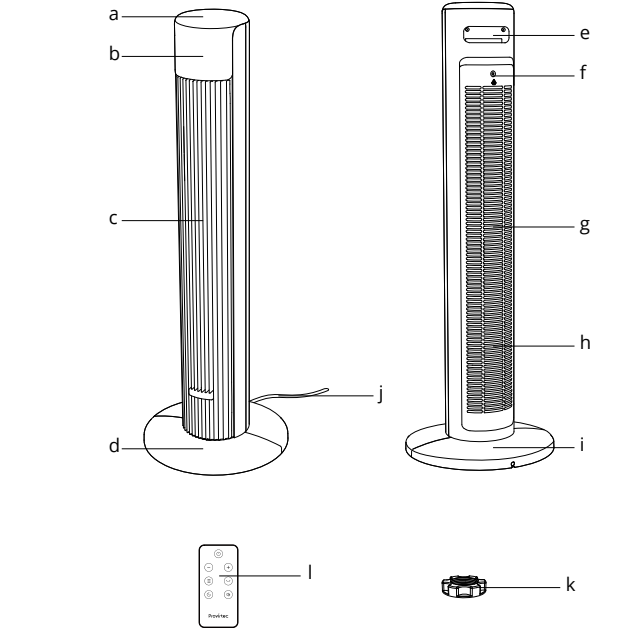


## 3. Specification

Product	WindMaster Smart Tower Fan
Model No.	TF-01
Input	120V~ 60Hz
Rated Power	50W
Dimensions	931.5*315*315mm/36.6*12.4*12.4inch
Battery Type	CR2025 ,3V

## 4. Introduction

a. Control Panel	b. Display Screen	c. Air Outlet
d. Front Base	e. Carry Handle	f. Set Screw
g. Air Inlet	h. Blade (built-in)	i. Rear Base
j. Power Cord (with plug)	k. Plastic Screw Nut	l. Remote Control



## 5. Assembly Instructions

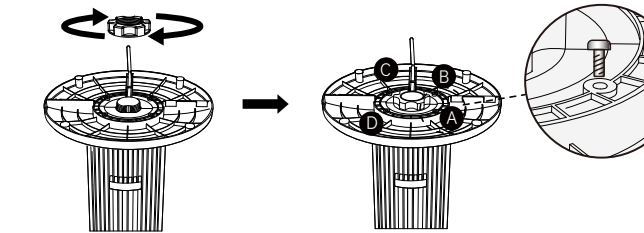
Do not connect the product to the power source until assembly is complete.

1. Install the front base and the rear base properly.

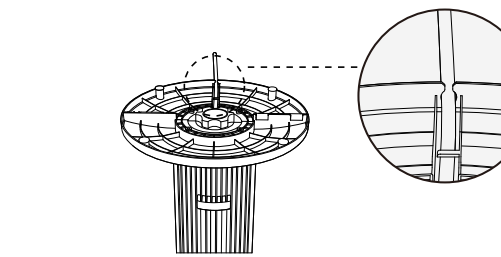
2. Remove the screw nut on the bottom of the fan.

3. Thread the power cord through the center hole of the installed base.

4. Attach the base to the fan and secure by screwing the screw nut. Then tighten the 4 base set screws in turn.



5. Insert the power cord into the cord groove.

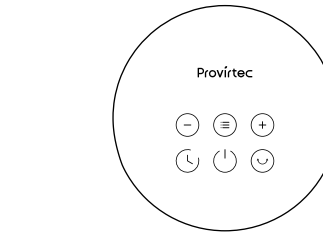


6. After assembly, place the fan upright on the ground.

## 6. Controls & Indicators

### Touch Control Instructions

#### a. Control Panel



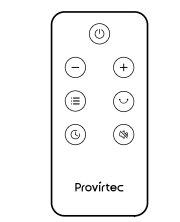
**On/Off**  
Press to turn on/off the fan.  
Long press for 3s to start network settings or reset the network (operate from the control panel only).

**Mode**  
Press to cycle through Nature/Cool/Auto/Sleep mode.

**Oscillation**  
Press to start/stop oscillating.

**Timer**  
Press to set a timer (1-24h).  
When the timer is on, press **+** or **-** to increase or decrease the timer duration.  
Long press **+** or **-** to increase or decrease the timer duration quickly (operate from the control panel only).  
When the timer is on, long press **⌚** for 3s to turn off the timer.

#### b. Remote Control



**+ Increase fan speed**  
Press to increase fan speed (1-6 levels) in Nature/Cool/Sleep mode. Long press to increase fan speed quickly (operate from the control panel only).  
Note: When the fan is in Auto mode, it will run at recommended fan speed and cannot be adjusted the fan speed by pressing **+** or **-**.

**- Decrease fan speed**  
Press to decrease fan speed (1-6 levels) in Nature/Cool/Sleep mode. Long press to decrease fan speed quickly (operate from the control panel only).  
Note: When the fan is in Auto mode, it will run at recommended fan speed and cannot be adjusted the fan speed by pressing **+** or **-**.

**Mute**  
Press to mute or unmute the sound.

**⏻ + ⏻**  
Long press On/Off and Timer for 3s at the same time to turn on/off the screen display (operate from the control panel only).

**⏻ + ⏻**  
Long press On/Off and Oscillation for 3s at the same time to turn on/off the child lock (operate from the control panel only).

Display Screen Instructions

If the fan is turned off or disconnected from power, it will run at the previous settings (except the timer setting) when it is turned on again. The following are the statements for different modes of the fan.

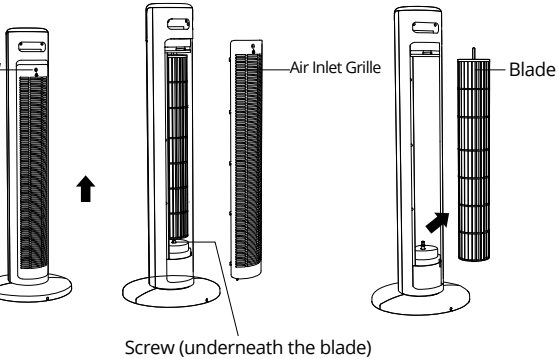
Icon	Statement	Display
	<b>Nature mode:</b> The fan runs at speed 1 to circulate the air. You can change the fan speed using the control panel, remote control, or the app.	White light always on.
	<b>Cool mode:</b> The fan runs at speed 6 to circulate the air. You can change the fan speed using the control panel, remote control, or the app.	

Icon	Statement	Display
	<b>Auto mode:</b> The fan speed adjusts to the indoor temperature. You cannot change the fan speed in Auto mode, but you can set different fan speeds for different temperatures using the app.	White light always on.
	<b>Sleep mode:</b> The fan runs at a speed with lower noise to circulate the air. The screen display will turn off after 5s when the Sleep mode is turned on. You can change the default fan speed by the control panel, remote control, or the app. You can set the adjustable fan speed range by the app. For more details, please refer to the app.	
	WiFi is connected.	White light always on.
	Connecting to WiFi.	White light is flashing.
	BLE is connected.	White light always on.
	<b>Timer:</b> You can set a timer to turn off the fan for your need.	In the process of setting: White light is flashing. Finish setting: White light always on.
	<b>Indoor temperature:</b> Display the current indoor temperature in real time.	White light always on.

Icon	Statement	Display
	<b>Fan speed:</b> When you turn on Nature mode or Cool mode, you can set a fan speed (1-6 levels). In Sleep mode, the fan speed can be adjusted within the adjustable fan speed range preset in the app. After setting, the display screen will show the indoor temperature.	White light on for 5s.
	<b>Timer duration:</b> When Timer is turned on, you can set a timer duration (1-24h). After setting, the display screen will show the indoor temperature.	

**7. Cleaning & Maintenance**  
**Caution:** Before performing any cleaning and maintenance, please turn off the fan and unplug it.  
For optimal performance, it is recommended to clean the tower fan after a long period of operation or when it is not in use for an extended period before storing it.

- Do not immerse the fan in water or allow water to enter the interior of the fan.
- Use a soft damp cloth to clean the outer surface, air inlet and outlet.
- For cleaning the air inlet grille: use a screwdriver to remove the set screw on the air inlet. Gently lift the grille upwards to remove it for cleaning. For cleaning the fan blade: use a screwdriver to remove the screw located underneath the blade, and then lift the blade upwards to remove it for cleaning.



**Note:** After cleaning, allow the air inlet grille and fan blade to dry completely. Then, follow the reverse steps of the mentioned process to reinstall them, ensuring they are properly installed before resuming the use of the tower fan.

8. App Download Instructions

a. Download the **Prodigytec** app from App Store (IOS device) or Google Play (Android device).

b. Register your account via email. After registration is completed, enter "Home", and select "Add device" - "Home Appliance" - "WindMaster Smart Tower Fan TF-01".

c. Follow the on-screen instructions to add the tower fan.

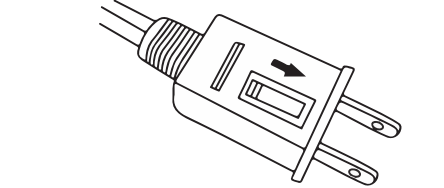
## 9. Troubleshooting

### Tower Fan Malfunction Instructions

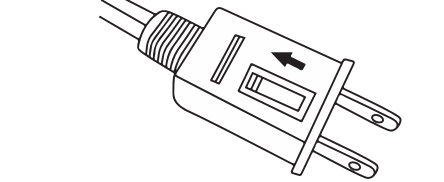
Issues	Solutions
The fan fails to turn on.	Please check if the power cord plug is inserted into the outlet and ensure that the plug is not loose.
	Please check if the power cord is damaged. If it is damaged, stop using the fan and contact our customer service.
	The fuse is blown. Refer to Power Cord and Plug Repair Instructions.
	Please replace a outlet and try to turn on the fan again.
The fan has weak airflow.	The air inlet is too close to the wall or the air inlet is blocked.
There is noise when the fan is operating.	If the fan is running at a high fan speed, it may make noise. Please decrease the fan speed.
The fan is shaking and wobbling.	The floor is uneven. Please place the fan on a flat, level surface.
	The fan base is not properly installed. Please install the base according to the assembly instructions.
Other malfunction.	If not for the reasons mentioned above, please contact customer service.

**Power Cord and Plug Repair Instructions**  
This product features a plug with fuse for overload protection. If the fuse blows, it indicates that the product may be overloaded or short-circuited. Please unplug the product immediately and follow the repair instructions below.

a. Slide the fuse cover at the top of the plug to the direction indicated by the arrow on the marker.



b. Remove the damaged fuse carefully and replace it with a new fuse. Install the fuse in place, and slide the fuse cover at the top of the plug toward the power cord side.



**Note:**  
1.The damaged fuse should be placed in corresponding waste bin.  
2.If you cannot see the fuse when you open the fuse cover, please contact a qualified technician to replace the power cord. Otherwise, if the plug is damaged, please discard the product.  
3.If you need more information on how to safely replace a fuse, please contact our customer service for assistance.

**10. Notice**  
**FCC Statement**  
This device complies with Part 15 of the FCC Rules. Operation is subject to the following two conditions:  
(1) this device may not cause harmful interference, and  
(2) this device must accept any interference received, including interference that may cause undesired operation.

**Warning:** Changes or modification not expressly approved by the party responsible for compliance could void the user's authority to operate the equipment.  
**Note:** This equipment has been tested and found to comply with the limits for a class B digital device, pursuant to Part 15 of the FCC Rules. These limits are designed to provided reasonable protection against harmful interference in a residential installation.

This equipment generates, uses and can radiate radio frequency energy and, if not installed and used in accordance with the instructions, any cause harmful interference will not occur in a particular installation. If this equipment does cause harmful interference to radio or television reception, which can be determined by turning the equipment off and on, the user is encouraged to try to correct the interference by one or more of the following measures:  
(1) Reorient or relocate the receiving antenna.  
(2) Increase the separation between the equipment and receiver.  
(3) Connect the equipment into an outlet on a circuit different from that to which the receiver is connected.  
(4) Consult the dealer or an experienced radio/ TV technician for help.  
To maintain compliance with FCC's RF Exposure guidelines, this equipment should be installed and operated with minimum 20cm distance between the radiator and your body: Use only the supplied antenna.

**11. Warranty**  
**12-month** warranty for the tower fan.  
**60-day** money-back guarantee for quality issues.  
Note: Damages caused by the disregard of this user manual are not subject to warranty.

**12. Contact Us**  
At Provirtex, we value your experience. If you have any questions about our product, please contact us through our store or app. Our dedicated team will respond promptly to provide you with the support you need. Thank you for choosing Provirtex, and we look forward to serving you.