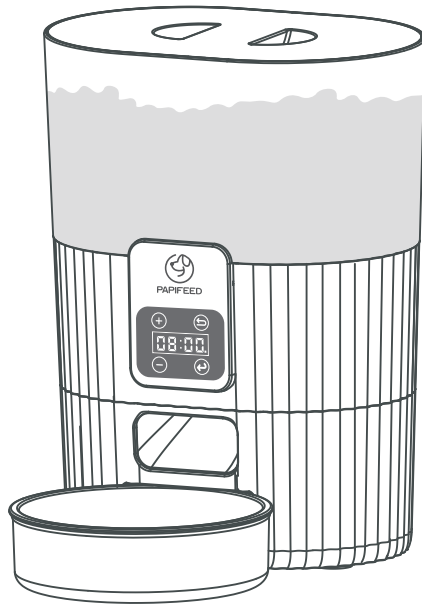




Smart Pet Feeder

User Manual



Please Read It Carefully And Keep It Properly Before Using The Product

Daily Feeding

(dog) weight	Normal activity	Increase	(dog) weight	Normal activity	Increase
2kg	39g	45g	8kg	111g	128g
4kg	66g	76g	10kg	131g	152g
6kg	89g	104g	12kg	150g	174g

(dog) weight	Normal activity	Increase	(dog) weight	Normal activity	Increase
14kg	178g	206g	20kg	233g	270g
16kg	197g	228g	22kg	250g	290g
18kg	197g	228g	24kg	267g	309g

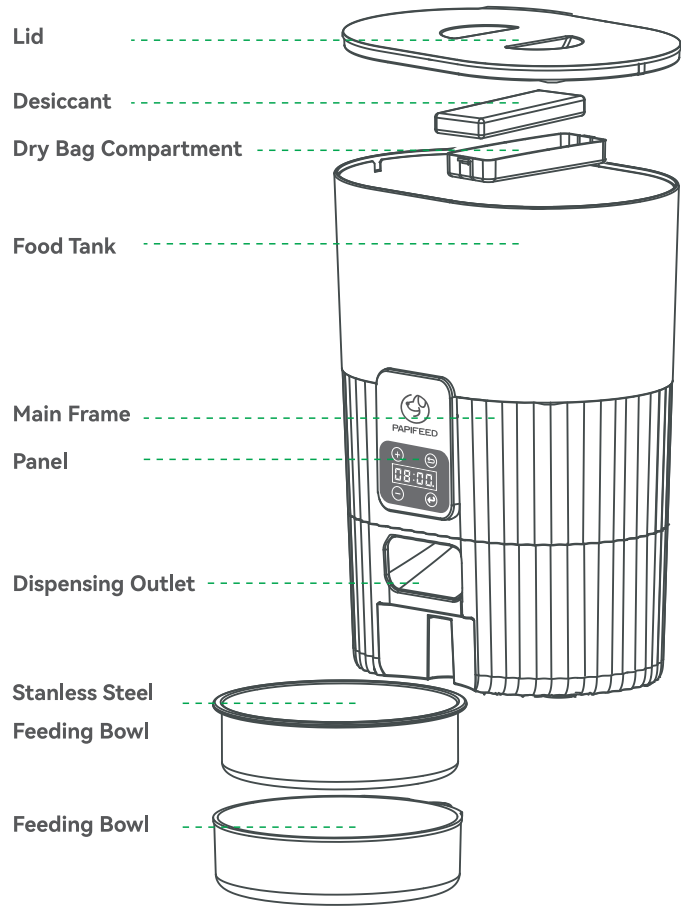
(dog) weight	Normal activity	Increase	(dog) weight	Normal activity	Increase
26kg	274g	318g	36kg	350g	405g
28kg	290g	336g	38kg	364g	422g
30kg	305g	353g	40kg	379g	439g
32kg	320g	371g	42kg	393g	455g
34kg	335g	388g	44kg	407g	471g

(cat) Month	1~2	2~4	4~6	6~8	8~12
Suggest	20~30g	30~50g	50~70g	70~80g	80~90g

(cat) weight	2~3kg	3~5kg	5~7kg	pregnancy	Lactation period
Suggest	25~35g	35~55g	55~85g	70~110g	120~190g

If the pet fail to eat up the previous programmed meal,please reduce the next meal portion.

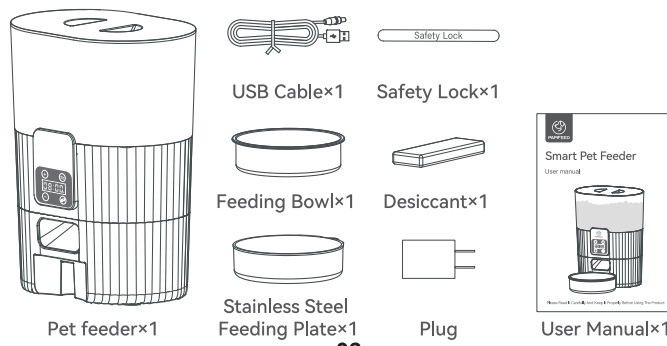
Component Breakdown



Product Specifications

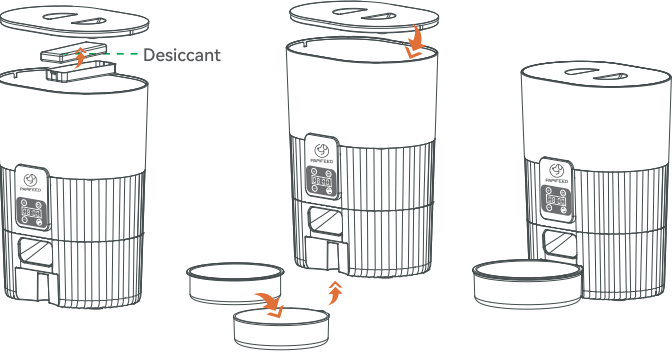
Product Name	Smart Pet Feeder
Suit For	Cat,Dog,Rabbit,Squirrel,Small Pets
Rated Voltage	5V 1A
Product Power	5W
Power Supply	DC 5V Adapter & 4*AA Alkaline Battery
Material	Echo-Friendly ABS
Product Size	208*148*277mm 8.2*5.8*10.9in
Product Weight	1kg 2.2lb
Product Capacity	3.5L
Pet Food	Dry Food
Portion Size	~20g/Portion (differed due to the different pet food density)

Packing List

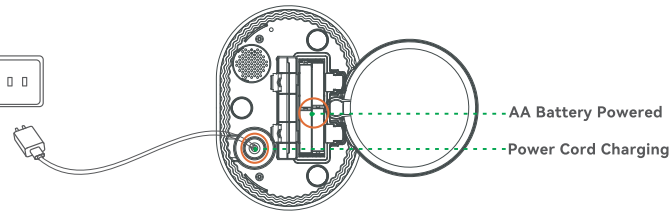


Product Hardware Assembly Steps

1.Installation of Food Tank.

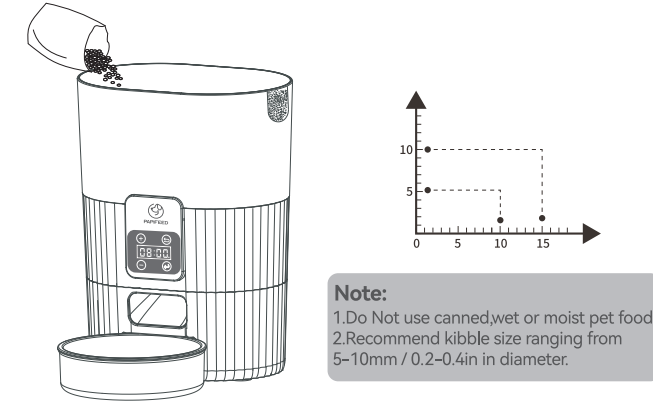


2.There are two ways to connect the power supply, you can choose to use the power adapter to connect the power supply, or you can choose to use 4 AA batteries as the power supply. (It is recommended to have two power supplies at the same time. When there is a power failure at home, AA batteries can be used as a backup power supply to prevent the feeder from stopping working).

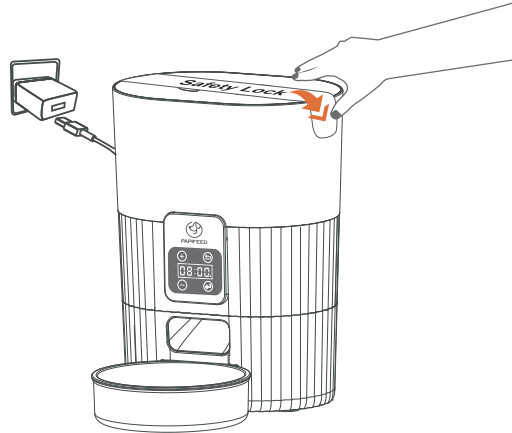


Scan for more details
www.papifeedpet.com

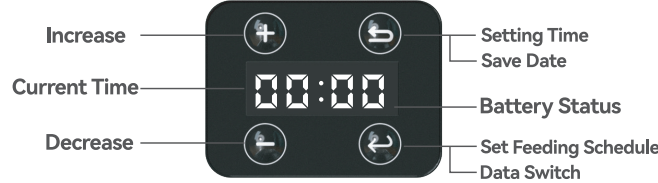
3. Pour the grain.



3. Install the Safety Lock.



Daily Feeding



【Low Battery Alert】 (Only Use Battery)

When the battery level is too low, the number in the screen will keep flashing. (To remind us that we should replace the battery)

+	In the rest screen, short press the screen to light up. (On Battery Power Only)
	Long press to continuously increase data.
Press and Hold for 2 Seconds to Manually Dispense a Portion of Food.	
-	Long press to continuously reduce data.
↺	Press and hold for 3s under the main interface to enter the time setting on the main interface.
	Short press to save the currently set data and return to the main interface.
↻	Short press on the main interface to set the number of meals, meal time, and the number of portion per meal. (When the number portion is set to 0, it means that there will be no food for this number of meals).
	In Settings, switch the parameters that need to be set.

Basic Interface Understanding



Time Setting

1. Under the main interface, long Press the 【↺】 key for 3s to set the time.



2. Press the key【+/-】 to increase or decrease the hours and minutes value. Press【↺】to swift between hour and minute;



3. After complete the setting, press 【↻】 to save the data and return to the main interface.



Manual Feeding

Long press the 【+】 for 2s to feed for one portion. Press once to release one portion.



Meal setting

1. Under the main interface ,short click the【↺】to enter into meal setting interface. There are 【-01-】 【-02-】 【-03-】 【-04-】 meals.



2. Press the 【↺】 again to enter the hours setting of the meal time, and long press the【+】 or 【-】 to quickly set the data.



3. Press【↺】 further set the minutes of meal time, and long press 【+】 or 【-】 to quickly set the data.



4. Press【↺】 to set the portions, adjust the value with the key【+/-】;



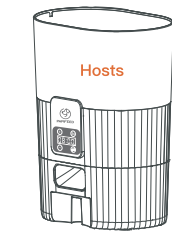
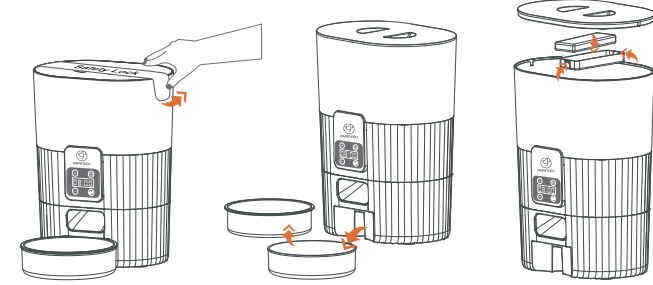
5. Tip: If enough meals have been set, you can directly press the 【↻】 key to complete the current meal number setting. If you need to set more meals, please press the 【↺】 key to enter the next meal number setting.



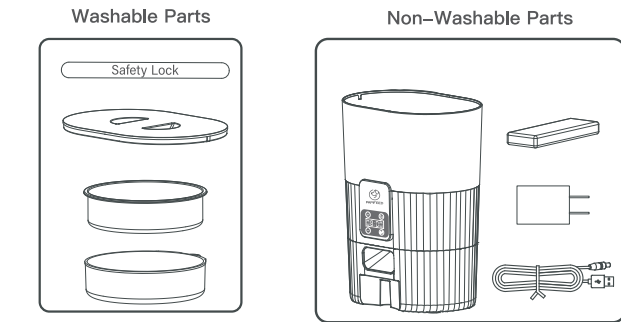
6. After the setting is completed, press【↻】 to confirm and save the settings, and prompt 【----】 to return to the main interface (Time interface).



Product Disassembly & Cleaning



Note: In addition to the host part of the feeder's other assembled parts can be disassembled and cleaned.



Q&A Trouble Shooting

Q: Why with the programmed meal, no food dispensing from the feeder?

A: Please check following:

1. There are some pet food in the food hooper.
2. If there is any error indicating on the screen.
3. Make sure you have pour into some non sticky dry food into the feeder instead of wet and canned one.

Q: If the power cord is bitten off by a pet, will it electrocute the pet?

A: We use a 5V safety voltage, No electrocution to pets!

Q: Why the food hooper can not be washed?

A: Non-detachable mainly because of the simple internal structure of the product, there is no blind Angle. Press one key to release the food from the hooper and wipe out the dispensing outlet and the inner wall to keep the food fresh.

100% After Sales Service

We provide a 1-year warranty for this appliance.

Please email our support team at service@papifeed.cn if you have any questions, attach your order number and describe your problem in your email. We will get back to you within 24 hours.