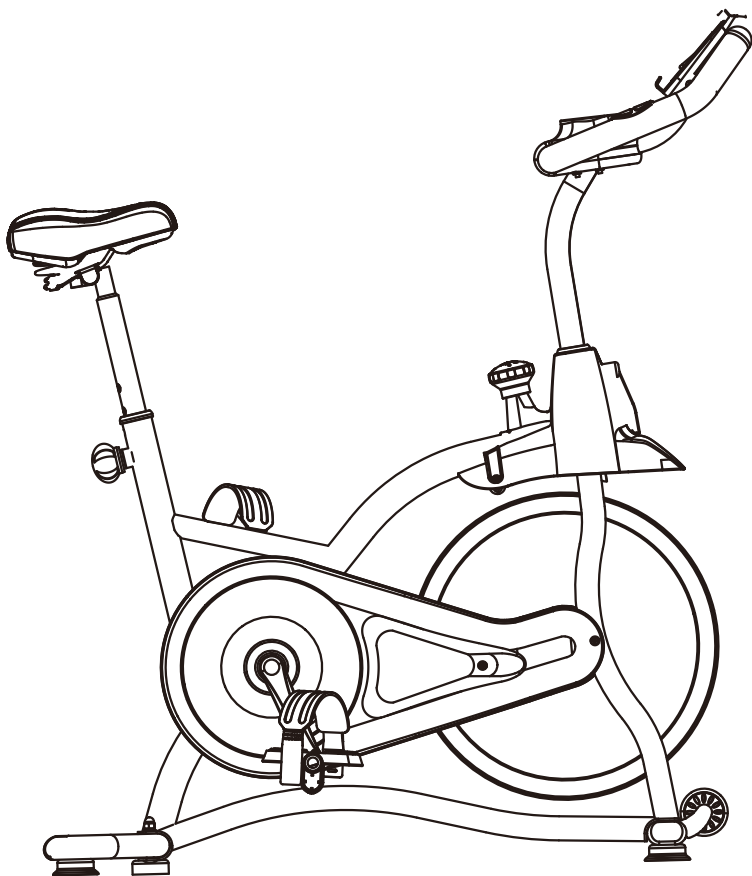
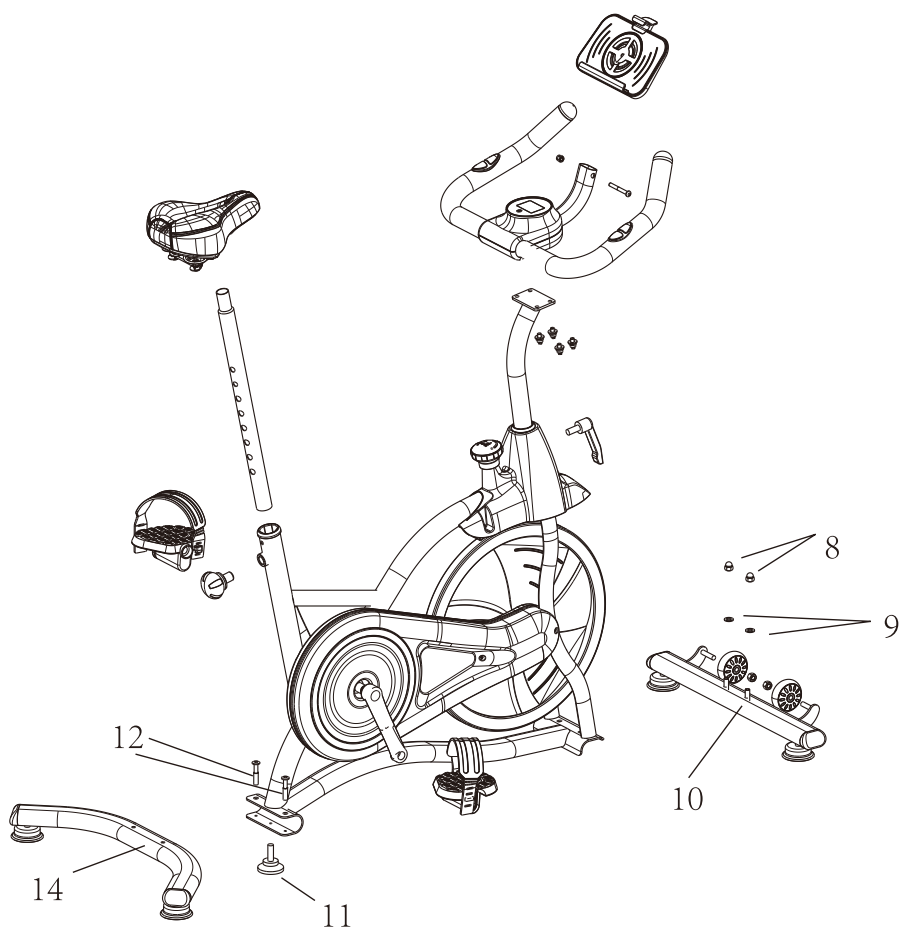
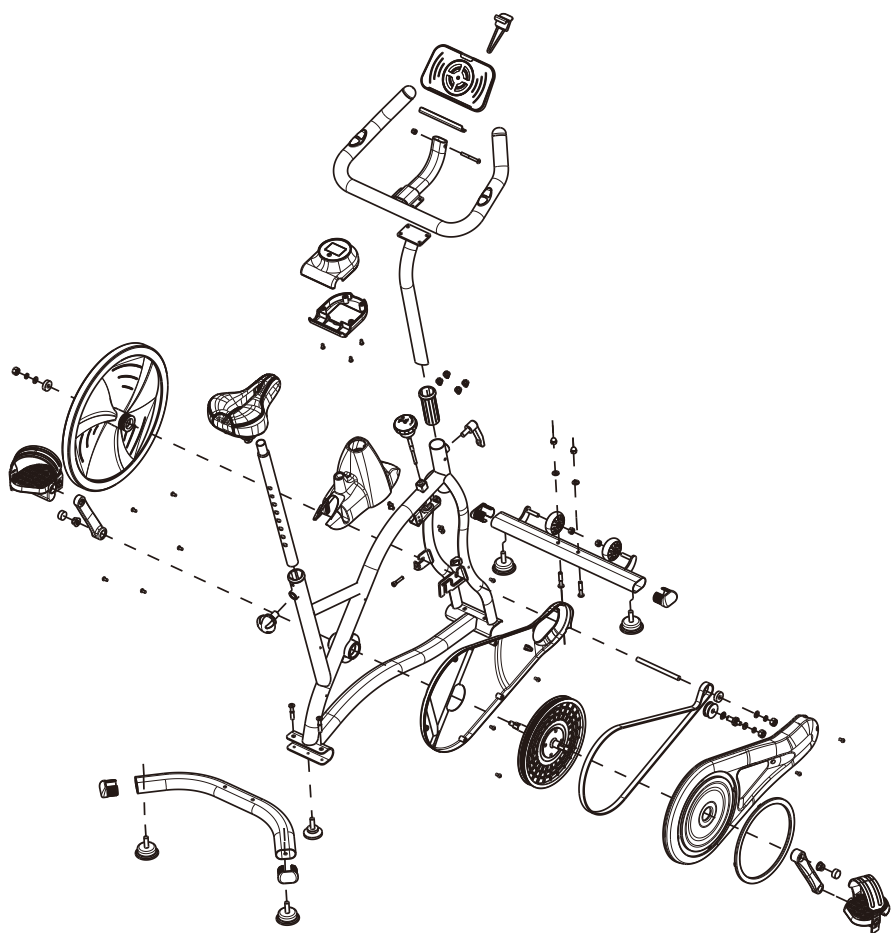


User Manual







Explosion details

order numbe	name	specifications	quantity
1	Main frame		1
2	Armor lift intubation		1
3	mobile phone support		1
4	handrail		1
5	Arrests fixed screws	Three combinations of M6*13	4
6	electronic meter		1
7	Seven words pull pin		1
8	Foot tube fixation nut	M6 cover type	2
9	Foot tube gasket	M6	2
10	The forefoot tube		1
11	Like a glue mat	M8	1
12	Rear foot tube screw	M8*40	2
13	pedal	Left, U, right, and R	1
14	The hind foot tube		1
15	Pull pin		1
16	Supper lift intubation		1
17	cushion		1

Matters need attention

1:You are advised to consult your doctor before performing any exercise program.

2:Check whether all the bolts on the equipment are locked.

3:Do not expose the equipment to a wet place,which will cause failure.(Any faults and injuries are caused by the above reasons

4 Before starting exercising,please wear sportswear and sneakers.

5:Any strenuous exercise can only start after 40 minutes after the meal.

6:To prevent injury,please warm up before exercising.

7:People with high blood pressure should consult a doctor before exercising.

8 Do not insert any other items in any part of the equipment,which will damage the equipment.

Warranty instructions

1: Warranty scope;

Warranty scope: non-human damage occurring in normal use under the condition of correct maintenance. The warranty card is limited to the original purchaser and cannot be transferred.

2. defects liability period
domestic:

Steel frame 3 years warranty Other parts warranty for 12 months

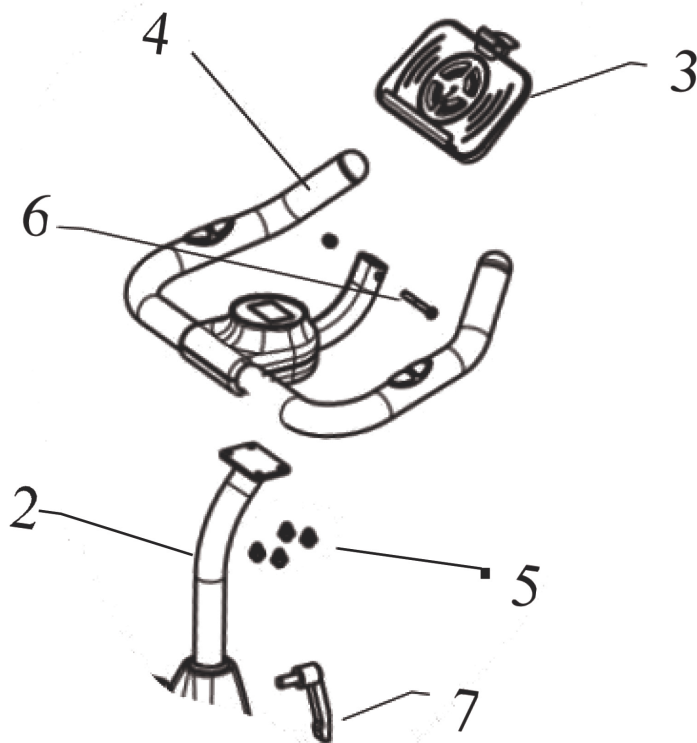
Three: The following conditions do not include the warranty:

(1)Damage caused by abuse, negligence, accident or unauthorized modification.

(2)Damage due to abnormal maintenance.

(3)Some other violations and the resulting damage.

Assembly Step 3:



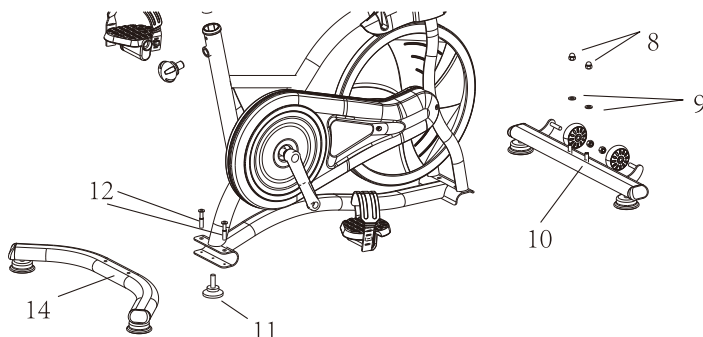
1: Insert the (2) armrest lift pipe into the main frame (1). Lock it with the (7) seven-word knob.

2: install (4) handrail with (5) screw on (2) handrail lift pipe with tools to lock the screw.

3: Insert the (3) mobile phone bracket into the screw hole in the (6) armrest handle, and tighten the (6) screw with the tool. Please note: be sure to confirm that all according to the above requirements and then lock all after installation bolt.

Assembly instructions

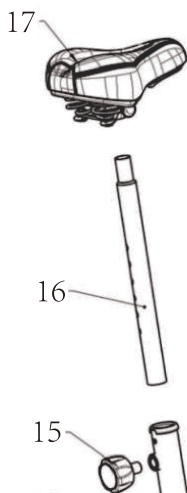
Component step 1



Open the packing box, remove the above accessories from the box, and place the main frame flat on the ground.

1. Set the front foot tube (10) with screws into the front of the frame and rotate the cover nut (8) and the gasket (9) with a multi-function wrench.
2. Set the rear pin (14) to the rear of the body, pass the pin screw (12) through the body and the rear pin, and rotate to lock the rear pin.
3. Ropin the pad (11) to the body.
4. Lock the left L and right R foot (13) on the main frame respectively (1) and then tighten in the thread direction.

the second step:

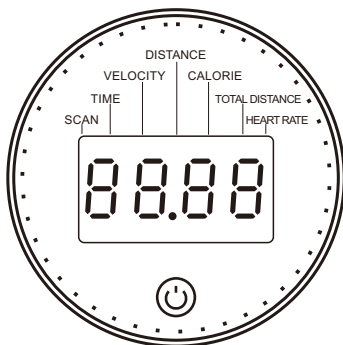


1. Insert the (16) cushion lift tube into the main frame, Turn on the (15) pull knob.
2. The cushion (17) is installed on the cushion lifting pipe (16), and the nuts on both sides of the cushion are locked with tools.

Operation Instructions

Functional Buttons:

MODE - Push down for selecting functions. If the long time holds down MODE button down for resetting TIME、DISTANCE and CALORIE.



Function And Operations:

1. SCAN: Press "MODE" button until "SCAN" appears, monitor will rotate through all the 6 functions :TIME、 VELOCITY、 DISTANCE、 TOTAL DISTANCE、 CALORIE 、 HEART RATE ,Each display will be hold 5 seconds.

2. TIME: Count the total time from exercise start to end.

3. VELOCITY: Display current speed.

4. DISTANCE: Count the distance from exercise start to end.

5.CALORIE: Count the total calories from exercise start to end.

6.TOTAL DISTANCE: The total distance which this function is refers to from battery capacity period runs.

7.HEART RATE: Press MODE button until "HEART RATE" appears. Before measuring your pulse rate, please place your palms of your hands on Both of your contact pads and the monitor will show your current heart beat rate in beats per minute(BPM) on the LCD after 6~7 seconds.

Remark: During the process of pulse measurement, because of the contact jamming, the measurement value may be higher than the virtual pulse rate during the first 2~3 seconds, then will return to normal level. The measurement value can not be regarded as the basis of medical treatment.

SPECIFICATIONS:

Function	Auto Scan	Every 5 seconds
	Time	0:00'~99:59'
	Velocity	The maximum signal can be pickup is 999.9(ml)km/h
	Distance	0.00~99.99(ml)km
	Calorie	0.0~999.9kcal
	Total Distance	0.0~999.9((ml)km
	Heart Rate	40~240bpm
Battery Type		2pcs of SIZE –AAA or UM –4
Operating Temperature		0°C ~ +40°C
Storage Temperature		-10°C ~ +60°C

NOTE:

1. If the display is faint or shows no figures ,please replace the batteries.
2. The monitor will automatically shut off if there is no signal received after 4 minutes .
3. The monitor will be auto-powered on when starting to exercise push button w/signal in.
4. The monitor will automatically start calculating when you start to exercise and will stop calculating when you stop exercising for 4 seconds .

NOTE: This product can be connected to kinomap and zwift

Product warranty card

Production mode: _____

Purchase date: _____

User name: _____

Telephone: _____

Address: _____

zip code: _____

1: According to the instructions or the content of the project, the normal use (From the date of enough)7 days replacement, steel frame for three years, one year free maintenance, lifetime maintenance.

2: For the products beyond the warranty period, the company will charge the cost of accessories.

3: If the fault occurs, please contact the seller in time, do not disassemble.

4: The actual fee should be charged in the following cases during the warranty period.

(1) Failure arising from improper user use

(2) Faults caused by fire, flood and other natural disasters.

(3) Faults caused by the movement after installation.

(4) Deformation or damage caused by the maintenance of the product by the seller or the repairman other than the designated after-sales service.

FCC Caution:

This device complies with part 15 of the FCC Rules. Operation is subject to the following two conditions: (1) This device may not cause harmful interference, and (2) this device must accept any interference received, including interference that may cause undesired operation.

Any Changes or modifications not expressly approved by the party responsible for compliance could void the user's authority to operate the equipment.

Note: This equipment has been tested and found to comply with the limits for a Class B digital device, pursuant to part 15 of the FCC Rules. These limits are designed to provide reasonable protection against harmful interference in a residential installation. This equipment generates uses and can radiate radio frequency energy and, if not installed and used in accordance with the instructions, may cause harmful interference to radio communications. However, there is no guarantee that interference will not occur in a particular installation. If this equipment does cause harmful interference to radio or television reception, which can be determined by turning the equipment off and on, the user is encouraged to try to correct the interference by one or more of the following measures:

- Reorient or relocate the receiving antenna.
- Increase the separation between the equipment and receiver.
- Connect the equipment into an outlet on a circuit different from that to which the receiver is connected.
- Consult the dealer or an experienced radio/TV technician for help.

The device has been evaluated to meet general RF exposure requirement. The device can be used in portable exposure condition without restriction.