



Kwikset

**MULTI-FAMILY &
LIGHT COMMERCIAL**

Kwikset

Made for the world you live in.TM

***We're the lock brand that
works hard to understand
the world you live in***

so that we can do everything

we can to protect it.

Our products provide

customers with the quality,

technology, durability and

style they want while

always guaranteeing the

highest level of security.



PRODUCTS FOR RESIDENTIAL & COMMERCIAL APPLICATIONS

Kwikset's Multi-Family & Light Commercial products are created with both heavy duty residential and light commercial applications in mind, including apartment buildings, assisted living facilities, and other multi-family housing. The line offers ANSI/BHMA Grade 2 & 3 security with ADA and UL options available. Featuring SmartKey® re-key technology with BumpGuard™ protection, Kwikset's Light Commercial products offer the highest levels of quality and security.

FEATURES:

- SmartKey® Re-key Technology with BumpGuard™ Protection
- ANSI/BHMA Grade 2 & 3 Certified Security
- Meets ADA Requirements (Delta excluded)
- Concealed Screws on Grade 2 Products
- Easy Installation
- Push Button Locking

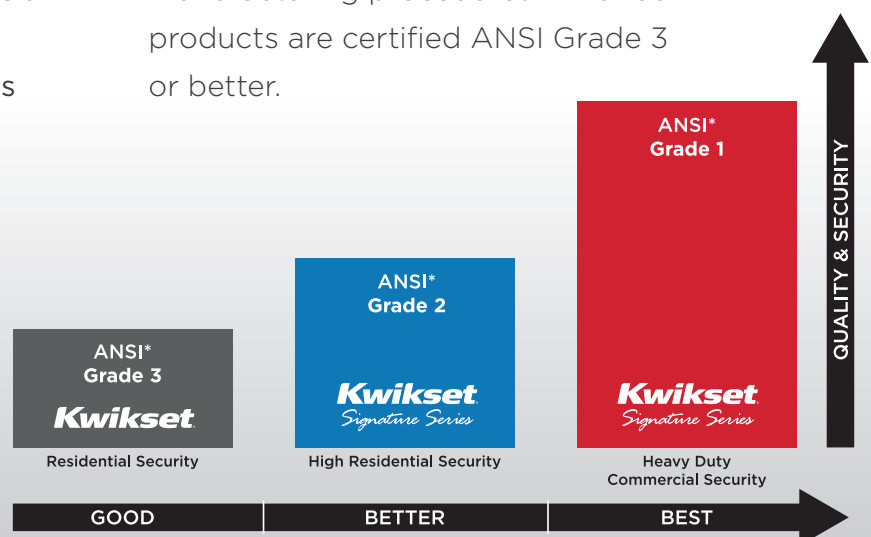
QUALITY ASSURANCE

ADA COMPLIANCE:

The Americans with Disabilities Act (ADA) is a federal statute designed to ensure access for individuals with disabilities. Kwikset's Multi-Family & Light Commercial products offer ADA compliance, with special features on levers and deadbolts that make exiting a room easier for individuals with disabilities.

ANSI/BHMA

ANSI/BHMA Certification requires that products are tested and audited, leading to higher design specifications and manufacturing procedures. All of our products are certified ANSI Grade 3 or better.



LEVERS



KINGSTON LEVER



Description

A smart solution for multi-family housing and other commercial spaces, the Kingston Lever offers ANSI/BHMA Grade 2 Certified Security and convenient push button functionality.

Available Finishes: 3, 11P, 15, 26D

Features & Benefits

- Features SmartKey® Re-key Technology with BumpGuard™ Protection
- Traditional Pin & Tumbler Cylinder Also Available
- ADA Approved
- ANSI/BHMA Grade 2
- 3HR UL Rating
- Concealed Screws
- Lifetime Mechanical & Finish Warranty
- Push Button Locking

CARSON LEVER



Description

A smart solution for both residential and commercial applications, the Carson Lever offers convenient push locking with ANSI/BHMA Grade 3 certified security.

Available Finishes: 3, 11P, 15, 26D

Features & Benefits

- Features SmartKey® Re-key Technology with BumpGuard™ Protection
- Traditional Pin & Tumbler Cylinder Also Available
- ADA Approved
- ANSI/BHMA Grade 3
- 3HR UL Rating
- Lifetime Mechanical & Finish Warranty
- Push Button Locking

DELTA LEVER



Description

A clean, streamlined design, the Delta lever fits a wide range of decorative styles, from traditional and transitional to contemporary, and offers ANSI/BHMA Grade 3 certified security.

Available Finishes: 3, 5, 11P, 15, 15A, 26, 26D

Features & Benefits

- Features SmartKey® Re-key Technology with BumpGuard™ Protection
- Features Adjustable Latch to Fit All Standard Door Preparations
- ANSI/BHMA Grade 3 Security
- Non-handed Lever Design to Fit Both Right and Left-handed Doors
- Lifetime Mechanical & Finish Warranty

BURBANK LEVER



Description

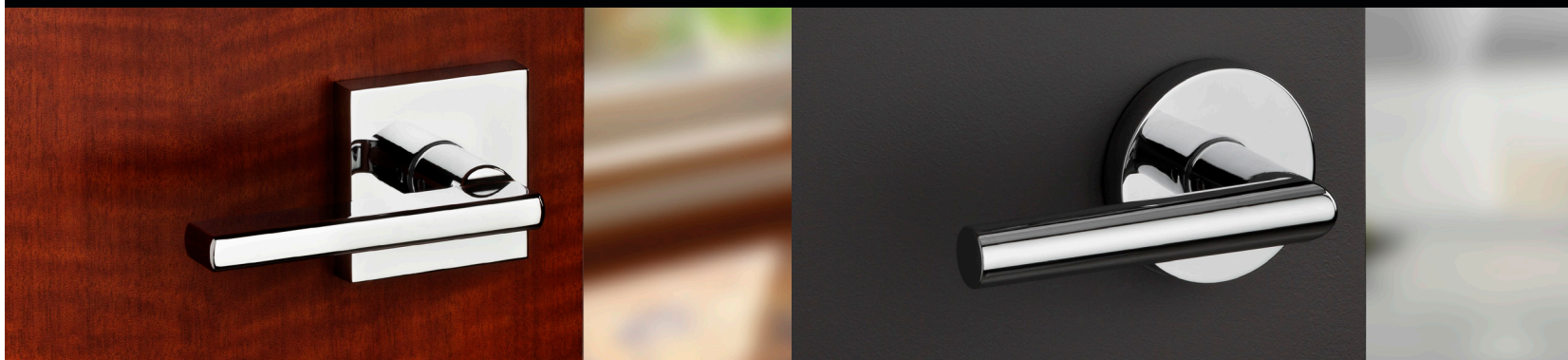
A smart solution for both residential and commercial applications, the Carson Lever offers convenient push locking with ANSI/BHMA Grade 3 certified security.

Available Finishes: 3, 11P, 15, 26

Features & Benefits

- Push Button
- ANSI/BHMA Grade 3 Certified Security
- ADA Compliant
- Lifetime Mechanical & Finish Warranty

LEVERS



MILAN LEVER



Description

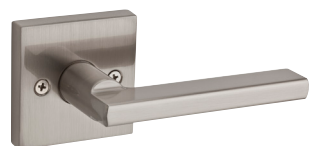
A smart solution for multi-family housing and other commercial spaces, the Kingston Lever offers ANSI/BHMA Grade 2 Certified Security and convenient push button functionality.

Available Finishes: 3, 11P, 15, 26D

Features & Benefits

- Features SmartKey® Re-key Technology with BumpGuard™ Protection
- Traditional Pin & Tumbler Cylinder Also Available
- ADA Approved
- ANSI/BHMA Grade 2
- 3HR UL Rating
- Concealed Screws
- Lifetime Mechanical & Finish Warranty
- Push Button Locking

HALIFAX LEVER



Description

A smart solution for multi-family housing and other commercial spaces, the Kingston Lever offers ANSI/BHMA Grade 2 Certified Security and convenient push button functionality.

Available Finishes: 3, 11P, 15, 26D

Features & Benefits

- Features SmartKey® Re-key Technology with BumpGuard™ Protection
- Traditional Pin & Tumbler Cylinder Also Available
- ADA Approved
- ANSI/BHMA Grade 2
- 3HR UL Rating
- Concealed Screws
- Lifetime Mechanical & Finish Warranty
- Push Button Locking

LISBON LEVER



Description

A smart solution for multi-family housing and other commercial spaces, the Kingston Lever offers ANSI/BHMA Grade 2 Certified Security and convenient push button functionality.

Available Finishes: 3, 11P, 15, 26D

Features & Benefits

- Features SmartKey® Re-key Technology with BumpGuard™ Protection
- Traditional Pin & Tumbler Cylinder Also Available
- ADA Approved
- ANSI/BHMA Grade 2
- 3HR UL Rating
- Concealed Screws
- Lifetime Mechanical & Finish Warranty
- Push Button Locking

INTERCONNECT



Description

The perfect solution for multi-family housing, Interconnect provides quality, security and style while meeting ADA requirements and fire code ratings.

Available Finishes: L03, 3, 5, 11P, 15, 15A, 26, 26D

Features & Benefits

- Features SmartKey® Re-key Technology with BumpGuard™ Protection
- ANSI/BHMA Grade 3 Security
- Meets ADA Requirements on All Lever Options
- Meets Fire Code Rating for Emergency Panic Exit
- Lifetime Mechanical & Finish Warranty
- Available with 780 or 660 Deadbolt
- Multiple knob & lever options available

KNOBBS & DEADBOLTS

CIRCA KNOB



Description

Meeting ANSI/BHMA Grade 2 standards and offered in a variety of finishes, the Circa knob fits into any residential or commercial application. Features adjustable latch to fit all standard door preparations.

Available Finishes: 3, 11P, 15, 15A, 26, 26D

Features & Benefits

- Features SmartKey® Re-key Technology with BumpGuard™ Protection
- ANSI/BHMA Grade 2
- Lifetime Mechanical & Finish Warranty

KEY CONTROL™ DEADBOLT



Description

Kwikset's Key Control™ Deadbolt is a revolutionary cost and time-saving alternative to master keying. The top concealed cylinder provides one-key control for the property manager, while the lower exposed cylinder allows unique user keys for the tenant.

Available Finishes: 3, 5, 11P, 15, 26D

Features & Benefits

- Features SmartKey® Re-key Technology with BumpGuard™ Protection
- ANSI/BHMA Grade 2
- Maintain Key Control Throughout Tenant & Employee Turnover
- Re-key the Lock Yourself Without Removing from the Door

* **Thin door kit available** - allows Key Control Deadbolt to fit on 1-3/8" doors.

780 DEADBOLT SERIES



Description

The 780 Deadbolt offers premium security features, including ANSI/BHMA Grade 2 Security as well as SmartKey® Re-key Technology. Also includes removable cylinder feature on Pin & Tumbler option.

Available Finishes: L03, 3, 5, 11P, 15, 15A, 26, 26D

Features & Benefits

- Featuring SmartKey® Re-key Technology with BumpGuard™ Protection
- ANSI/BHMA Grade 2 Security
- Features Adjustable Latch & Deadbolt to Fit All Standard Door Preparations
- Lifetime Mechanical & Finish Warranty
- Removable Cylinder Feature

660 DEADBOLT SERIES



Description

The 660 Deadbolt provides certified Grade 3 security at an affordable price. Add to a keyed knob or lever for additional security.

Available Finishes: 3, 5, 11P, 15, 15A, 26, 26D

Features & Benefits

- Features SmartKey® Re-key Technology with BumpGuard™ Protection
- Features Adjustable Latch & Deadbolt to Fit All Standard Door Preparations
- ANSI/BHMA Grade 3 Security
- Lifetime Mechanical & Finish Warranty
- One-sided Deadbolt Available

SMARTKEY PADLOCK



10,000 lb
Cut Resistance



5,000 lb
Pry Resistance



Description

The perfect solution for multi-family key management now you can use the same key to unlock tenants' apartments & padlocks for secured gates, maintenance buildings, storage areas and toolboxes.

Features & Benefits

- Key retaining feature ensures padlock is not left unlocked and prevents accidentally locking the key inside a shed, toolbox, garage, workshop, etc.
- Rekeys in seconds
- Uses K1 keyway. Works with your Kwikset or Kwikset compatible house key.
- Great for tool boxes, storage sheds, secured gates, maintenance buildings.



THE KEY EVOLVED.

AN INNOVATIVE PRODUCT A GREAT REVENUE GENERATOR



- Generate additional revenue by charging a monthly upgrade fee and Kevo will more than pay for itself.
- Attract long lasting tenants with this upgrade and technology.
- Low maintenance means fewer tenant headaches and less time and money wasted.
- SmartKey allows you to rekey in seconds when a new tenant signs a lease.
- Personalize your property and retain current residents while also attracting new ones.



Polished Brass L03

Satin Nickel 15

Venetian Bronze 11P



Touch to Open
Convenience



No Smartphone?
No Problem



Compatible with
the iPhone 4S or
Higher and Android 5.0
(Lollipop) or higher



Your Smartphone
is now your key



Share eKeys
via Smartphone



works with
nest

POWERBOLT



Description

Powerbolt innovated the keyless entry technology over 10 years ago and has stood up to the test of time. Simply enter your personalized access code for convenient keyless entry. Powerbolt is easy to install, program and use. And the motorized driven deadbolt allows for one-touch locking.

Available Finishes: 3, 11P, 15

Features & Benefits

- Keyless entry at a value
- Two customizable access codes
- Motorized driven deadbolt for one-touch locking
- Installs in minutes with just a screwdriver- no hard wiring

SMARTCODE 909



Description

Upgrade to a more convenient, more controllable keyless entry deadbolt with SmartCode™ Signature Series. With your own personal code, you can enter your home with just a few simple pushes of a button and lock it with just one.

Available Finishes: 3, 11P, 15

Features & Benefits

- SmartKey® technology - the lock you can re-key yourself in seconds in three easy steps
- Additional products are available with Home Connect technology, visit kwikset.com/wirelesslocks

CONTEMPORARY SMARTCODE 909



Description

Add a level of security and style to your home with the SmartCode® touchpad electronic lever. Designed with a sleek style to complement your home's interior, you can lock up your home office, wine cellar or storage room and never have to worry about keys.

Available Finishes: 3, 11P, 15

Features & Benefits

- Installs in minutes with just a screwdriver - no hard wiring required
- One touch locking convenience
- Easily replaces any standard deadbolt
- Featuring SmartKey® Re-key Technology. The lock you can re-key yourself in seconds
- Additional products are available with Home Connect technology, visit kwikset.com/wirelesslocks

SMARTCODE 911



Description

Add a level of security and style to your home with the SmartCode® touchpad electronic lever. Designed with a sleek style to complement your home's interior, you can lock up your home office, wine cellar or storage room and never have to worry about keys.

Available Finishes: 3, 11P, 15, 15A, 26, 26D

Features & Benefits

- Lifetime mechanical and finish warranty. 1 year electronics warranty
- Additional products are available with Home Connect technology, visit kwikset.com/wirelesslocks

SMARTKEY 913



Description

Add style and security to your home with the SmartCode™ 913 deadbolt. The keyless entry deadbolt allows you to enter your home using a personal code and the motorized deadbolt locks with just the push of a button.

Available Finishes: 3, 11P, 15, 15A, 26, 26D

Features & Benefits

- Secured keyless entry convenience
- One touch locking
- Dramatically reduced interior size and sleek metal design
- 16 user codes plus master code feature for added security
- Additional products are available with Home Connect technology, visit kwikset.com/wirelesslocks

SMARTKEY 915



Description

Kwikset®, the leader in residential security, introduces the NEW SmartCode™ 915 Touchscreen Electronic Deadbolt with SecureScreen™ technology! The advanced touchscreen is ultra responsive to touch for instant screen display and features cool white LEDs for defined illumination.

Available Finishes: 3, 11P, 15, 15A, 26, 26D

Features & Benefits

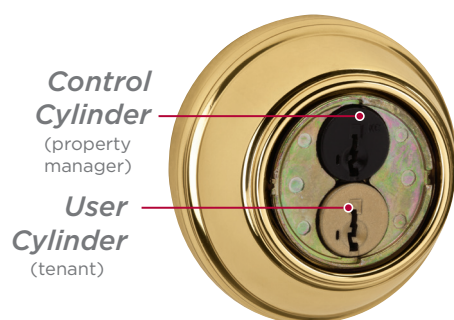
- Capacitive touchscreen
- Bright white LED's for clear visibility in the brightest sunlight
- Secured keyless entry convenience
- One touch locking
- Additional products are available with Home Connect technology, visit kwikset.com/wirelesslocks

KEY CONTROL™ DEADBOLT

THE SMART ALTERNATIVE TO MASTER KEYING

Re-keying & managing a traditional master key system is labor intensive, time consuming & costly. With the first & only two cylinder Key Control™ Deadbolt, either cylinder can be re-keyed in seconds, without removing the lock from the door.

- Two separate cylinders, Tenant & Property Manager allow for more tenant key cuts than a traditional master key system
- Proprietary keyway adds security - the tenant key will never fit into the Property Manager Cylinder
- The Property Manager Cylinder is concealed when not in use to avoid tenant confusion



Easily access the Key Control cylinder: (1) Insert the SmartKey tool into the slot at bottom of cylinder cover (2) Rotate cover clockwise to expose the Key Control cylinder. (3) Now you have access to the Key Control cylinder. Use tool to rotate counter-clockwise back to user's keyway when appropriate.



- Re-key in seconds—save time & money
- Pick Resistant—passes the most stringent lock picking standard, UL437, par 11.6
- BumpGuard™ protection against lock bumping



HOW SMARTKEY WORKS

Re-key as Easy as 1-2-3



! You must have your functioning key & the learn tool for the system to work.

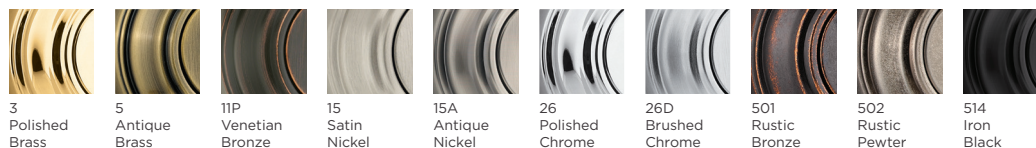
Insert functioning key & turn 1/4 turn clockwise.

Insert & remove the SmartKey learn tool. Remove functioning key.

Insert new key & turn 1/2 turn counter-clockwise. Done.
Your lock is now re-keyed!

Finishes

Our philosophy is that a finish can make all the difference. From Polished Brass to Rustic Bronze, the finish you choose makes a statement. It can, quite literally, finish off a room, giving it style and polish. We offer a full spectrum of finishes and textures.



	3	LO3	5	11P	15	15A	26	26D	501	502	514
Knobs											
Circa	•			•	•	•	•	•			
Levers											
Burbank	•			•	•			•			
Carson	•			•	•			•			
Halifax				•	•		•	•			
Kingston	•			•	•			•			
Lisbon	•			•	•			•			
Milan				•	•		•	•			
Deadbolts											
680/665/663	•		•	•	•	•	•	•			
780/785	•	•	•	•	•	•	•	•			
816 Key Control	•		•	•	•			•			
Residential Electronic Locks											
909 SmartCode		•		•	•						
909 CNT SmartCode				•	•		•	•			
911 SmartCode Lever		•		•	•						
913 SmartCode		•		•	•						
915 SmartCode		•		•	•						
925 Kevo Deadbolt		•		•	•						
PowerBolt	•			•	•			•			

FIND OUT HOW MUCH SMARTKEY CAN SAVE YOU

Use our SmartKey Calculator to compare the cost of a traditional pin & tumbler re-key vs a SmartKey re-key. You will be amazed at the savings. As a building manager with hundreds of locks to maintain, it has never been faster or cheaper to re-key.

The Kwikset Saving Calculator allows you to share estimated time & cost savings with customers who are considering the purchase of SmartKey products.

MINUTES TO RE-KEY A
TRADITIONAL PIN & TUMBLER

Min Per Lock: 10

AVERAGE LABOR COST PER LOCK

Cost Per Lock: \$25

NUMBER OF LOCKS

-

5

+

GO TO [KWIKSET.COM/CALCULATOR](https://www.kwikset.com/calculator)



KEY CONTROL™
DEADBOLT

Kwikset®

www.kwikset.com

Access the Kwikset Smart Security App
available for download



19701 DaVinci • Lake Forest, CA • 92610 • 1-800-327-LOCK (5625)
12/15 28946 • Copyright © 2015 Spectrum Brands HHI