

SSVWORKS

REAR-SEAT SUBWOOFER ADD-ON KIT

INSTALLATION

PN: 250-MAVR-PHZ+2BS10V

Fits: 2025 Can-Am Maverick R Max



MAVERICK R MAX



Please read and understand these instructions completely before installation to avoid possible injury, or damage to the accessory or vehicle.

WARRANTY DISCLAIMER

SSV Works offers a warranty on all products manufactured by SSV Works, covering defects in material or workmanship. For Kicker products included with SSV Works systems, SSV Works handles all warranty claims directly, eliminating the need to contact Kicker separately. Warranty coverage is as follows:

- Enclosures/Panels (SSV Works): Limited Lifetime Warranty
- SSV Works Speakers and Subwoofers: Limited Lifetime Warranty
- Kicker Speakers: Limited 3-Year Warranty
- Kicker Subwoofers: Limited 1-Year Warranty
- SSV Works Amplifiers: Limited 2-Year Warranty
- Kicker Amplifiers: Limited 2-Year Warranty
- SWITCH Works Products: Limited 3-Year Warranty

This warranty does not cover damage caused by misuse, improper installation, or unauthorized modifications. For warranty claims, please contact SSV Works directly for assistance.

MAVERICK R MAX

REAR-SEAT SUBWOOFER ADD-ON KIT

CONTENTS

PARTS LIST	1
TOOLS NEEDED	1
INSTALLATION	2-7

MAVERICK R MAX
REAR-SEAT SUBWOOFER ADD-ON KIT
PARTS LIST

(B-H3767) Harness, Mav R, 2-Pin JST Subwoofer Splitter to Female RCA Y Adapter	(B-MAVR-RUS10) Pod, Subwoofer Enclosure, Rear, V10 & Comp RT, 2024 Mav R w/ 2-Pin Subwoofer Harness Installed	(B-H3743) Trigger Wire Splitter, 9 ft	(B-S1560) Screw, Sheet Metal, PHPS, #4 X .50", SUS304, Black Oxide
(A-PXA-6001) Kicker Amp PXA6001- Modify	(B-MBP3752) Bracket Pack, Bracket (x2), Rear Subwoofer 2024 Maverick R	(250-MAVR-RUS10U) CAN-AM Maverick R XRS (4 DOOR), Rear Underseat Sub	(B-HPM520-2) Hardware Pack, PHTS M5x20mm (x2) and M5 Washer OD 15mm Black Oxide (x2)
(B-H3744) Power and Ground Cables w/ Fuse, Mav R Rear Amp	(B-MBP3755) Amp Bracket Pack, Rear Sub Location, 600.1 Kicker Amp - Maverick R	(B-H2703) Subwoofer Harness, 2-Wire, 14 AWG W/ Molded Grommet.	(B-HPM612HHW14-4) Hardware pack, set of 4 M6x12 Hex Head screws & 14 O.D. washers
(B-S1157) M4 x 8 Phillips Pan-Head Screw, Natural Finish, with Nylock	(B-HP3835) Hardware Pack, Screw, PHPS, M5 x 18mm, Thread Forming for Plastic, x2	(B-H3745) Mav R Rear Amp Add-On Wire Harness Pack	(B-H3741) Y-Splitter Harness, 2-Pin 14AWG Subwoofer Splitter for Kicker Amp (8 inch)
			(B-HRCA9) RCA Cable, 9 ft

TOOLS NEEDED

- Pry tool
- Philips screwdriver
- T30 Torx driver
- T40 Torx driver
- Wire cutters/crimpers
- 5mm allen wrench
- 8mm wrench
- 10mm wrench
- 13mm wrench
- 18mm wrench



MAVERICK R MAX REAR-SEAT SUBWOOFER ADD-ON KIT

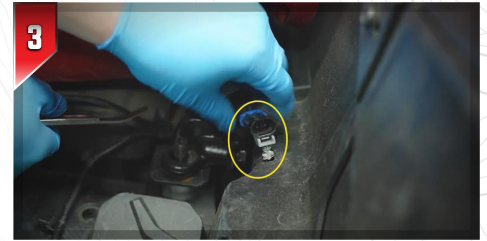
INSTALLATION



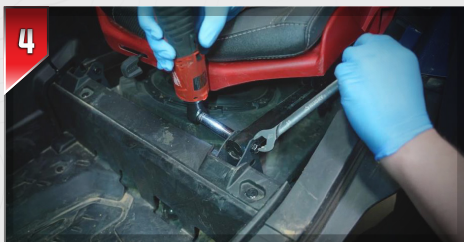
Slide the drivers side front seat all the way forward to expose the rear mounting bolts.



Using an **18mm Socket**, remove the bolts.



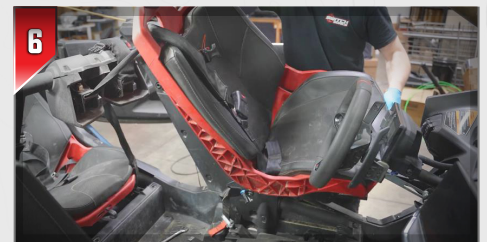
Unplug the driver's seat wiring harness, then pull the plug and its speed clip straight up to remove it from the center console.



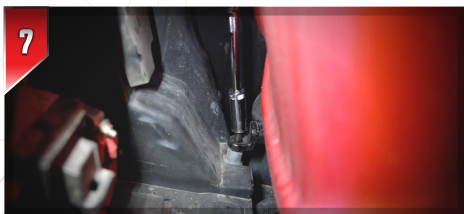
Slide the front drivers side seat back to expose the seat's front mounting bolts. Using a **13mm socket** and **wrench**, remove the nut and bolt from both sides of the seat.



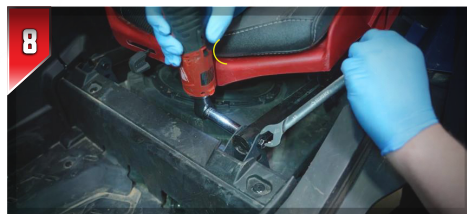
Using a **5/8 socket**, remove the bolts to the seat belt harness that attach the harness to the sides of the seat.



Pull the seat belt harness out through the back of the seat, then remove the driver's seat from the vehicle.



Slide the rear drivers side seat forward to access the rear mounting bolts. Using an **18mm Socket**, remove the bolts.



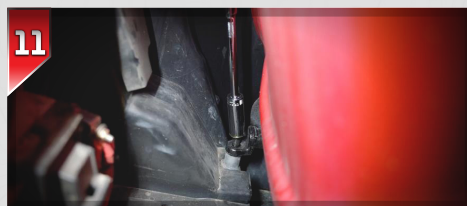
Slide the rear drivers side seat back to expose the seat's front mounting bolts. Using a **13mm socket** and **wrench**, remove the nut and bolt from both sides of the seat.



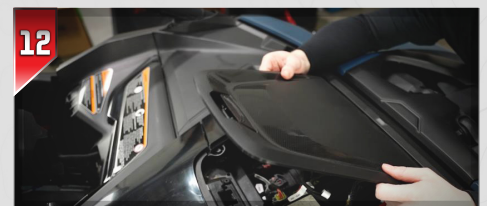
Using a **5/8 socket**, remove the bolts to the seat belt harness that attach the harness to the seat and remove the seat.



Using a **10mm socket** remove the bolts from the positive and negative terminals on the battery, leave them disconnected until everything is installed.



To remove the rear passenger-side seat, repeat steps 7 through 9. The front passenger seat can remain installed.



Open the plastic dash panel covering the bus bar and slide it toward the rear of the vehicle to remove it.

MAVERICK R MAX REAR-SEAT SUBWOOFER ADD-ON KIT

INSTALLATION



Remove the **Two (2) 10mm trim panel bolts** located beneath the dash panel you just removed.



Remove the outer dash panel trim pieces by either using a pry tool to release the speed clips or pulling the panel straight up by hand.



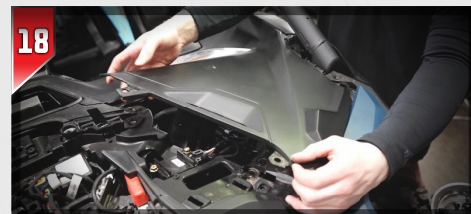
Open the upper storage compartment door and remove it by lifting straight up, this will release it from the hinges.



Using a **T25 Torx bit**, remove the screw and plastic panels around the A-pillar on the driver side.



Underneath the panel there will be **Two (2) more 10mm screws** to remove.



After removing the **10mm screws** from the dash you can Remove this dash panel by pulling straight up. Repeat step 9-10 on the passenger side.



Then Remove the gloss black plastic trim panels around the dash. They are held in by speed clips you can pull toward the rear of the vehicle to remove them.



Remove the **eight (8) 10mm screws** securing the top panel in the dash.



After removing the **10mm screws** the panel will only be held in by speed clips. Carefully pry up and away from the vehicle and remove the dash panel.



Remove the **three (3) 10mm screws** securing this panel.



Remove the **Three (3) T30 Torx screws** on the side of the vehicle, just under the A-pillar. These are holding in the top dash panel.



Remove the **Three (3) rocker switch cluster** to the left of the steering-wheel, by removing the **One (1) T30 Torx screw** under the right rocker location.

MAVERICK R MAX REAR-SEAT SUBWOOFER ADD-ON KIT

INSTALLATION



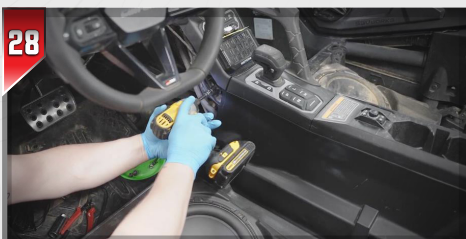
Pull the rocker switch cluster from the dash and remove the plugs from behind it.



Remove the dash panel around the steering-wheel by releasing the speed clips.



Remove the front drive side center console kick panel. Release the speed-clips by pulling the panel directly away from the center console.



Behind the panel just removed, remove the **10mm screw**. This needs to be removed on the passenger side as well.



Remove the **T30 Torx screw** on both sides of center console. The screw is just behind the front set of cup holders.



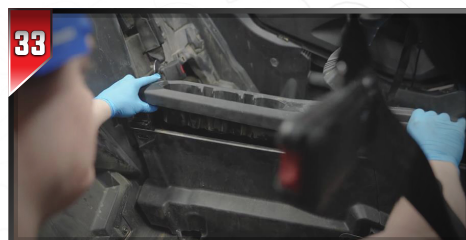
Remove the top cup holder panel by prying straight up. This will release the speed clips.



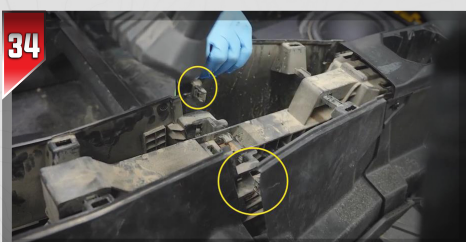
Remove the side plastic panels by releasing the speed clips pulling away from the center console.



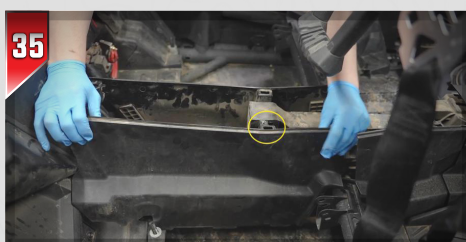
At the rear of the vehicle, remove the **T30 Torx screw** from both sides of the center console.



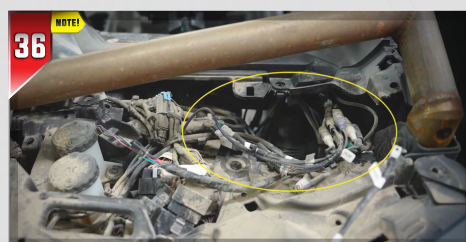
Pry up on the top of the rear center console / cupholder panel to release the speed clips and remove the panel from the vehicle.



Pull the side center console panels by releasing speed clips out and away from the rear center console panel.



Remove the remaining console panels. Pull away from the center console to release the speed clips.



Locate the existing SSV Works amplifier assembly. Unplug the existing **SSV Works B-H3517 input to RCA harness** for the subwoofer amp (a small white MavR Audio plug).



If you're running another audio brand system, cutting and splicing will be required for step 38-40.

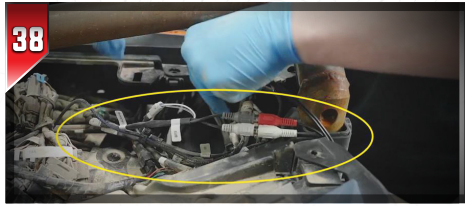
MAVERICK R MAX

REAR-SEAT SUBWOOFER ADD-ON KIT

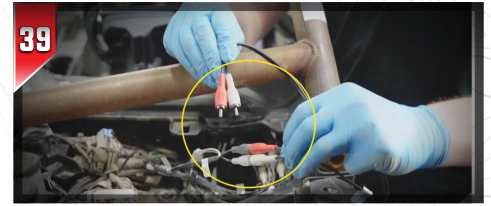
INSTALLATION



Next, you'll need the included **(B-H3767) Harness, (2-Pin) Subwoofer input Y-Adapter to Female RCA.**



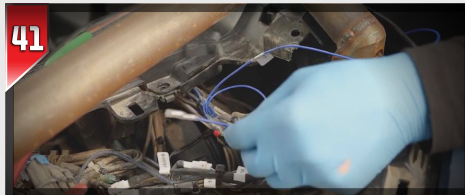
The **(B-H3767) Harness** will go in-between the existing connection of the **SSV B-H3517 input to RCA harness** for the subwoofer amp and the Maverick R Sub audio output plug (small white plug).



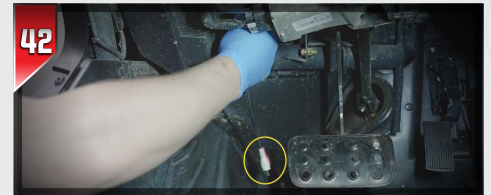
Once The **(B-H3767)** is plugged in, you will now have **Two (2) extra RCA's.** You will now use the **H-RCA9** and plug into the open female RCA's.



Plug the **(B-H3743) Trigger Wire Y-Splitter**, in-between the existing (blue wire) amp trigger wire and the amps (blue) input trigger wire.



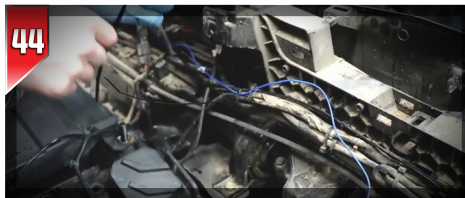
The **(B-H3743) Trigger Wire Y-Splitter** will allow for everything to plug back in the way it was and give you an extra **9FT trigger wire** that you will run with your **(B-HRCA9) cables** towards the rear of the vehicle for the amplifier.



Run the **(B-HRCA9)** and the **(B-H3743)** down through the dash, past the amplifier, and over to the center console. Make sure to secure your harnesses away from any moving parts or heat sources.



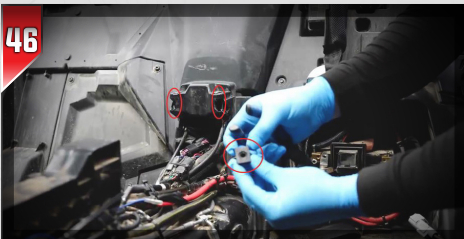
Route your harnesses down and through the center console, you can run along and zip tie to the factory wiring harnesses going through the vehicle.



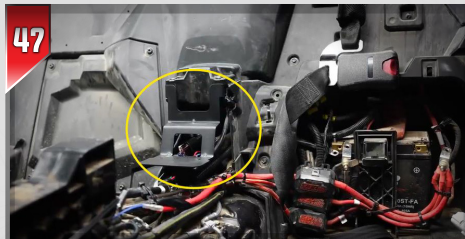
Route the **(B-HRCA9)** and the **(B-H3743)** towards the rear of the vehicle, leaving the harnesses under the rear cupholders.



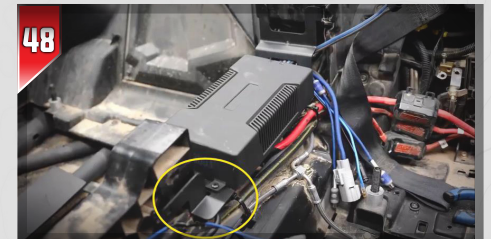
Grab the amplifier that came with your kit and the **(B-MBP3755) Amp Bracket Pack**, for Rear Sub amp Location. Install the bracket as shown here, this bracket should be facing towards the front of the vehicle, for now.



Remove the **two (2) U-clip speed-nut** inserts from the highlighted location. These are located on the rear center console mounting location on the back wall.



Place **(B-MBP3755) Amp Bracket** in its mounting position by sliding the tabs of the bracket with the screw holes into the rear center console where you removed the speed nuts. You can loosely install the provided screws for now.

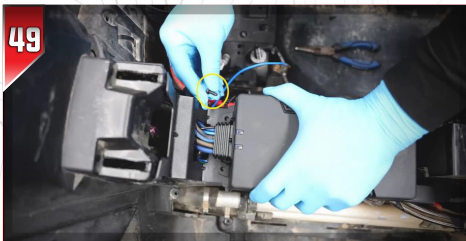


Slide the forward-facing brackets into place, then lay the amp down on the rear portion of the amp plate.

MAVERICK R MAX

REAR-SEAT SUBWOOFER ADD-ON KIT

INSTALLATION



Route your amplifier's harnesses through the opening on the amp plate. Using the provided **(B-S1157) M4 x 8 Phillips Pan-Head Screw**, mount the amp onto the (2) mounting plates.



Plug-in the **(B-HRCA9)-RCA cable** in the amplifier's inputs (matching Blue to Red). You will also plug the **(B-H3743) blue amp Turn-On Trigger Wire** into the amplifiers blue



Plug the **(B-H3741) Y-splitter, 2-Pin 14-AWG harness** into the amplifier's subwoofer output plug. Route to both sides of the center console for the **(250-MAVR-RUS10U)** rear-seat subwoofer



Using a Philips screwdriver, assemble the provided fuse and **8-AWG power wire** onto the fuse holder.



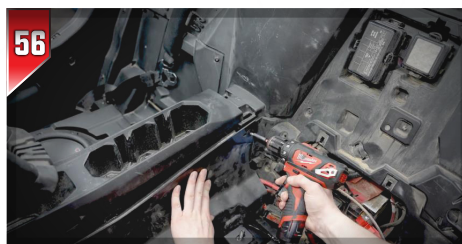
Route the power and ground cables from the amp to the battery through the opening in the center console. Leave the two terminals at the battery but not hooked up.



Plug the **(B-H3744) Power and Ground Cables** into the amplifier.



Using the **(B-HP3835) M5 x 18mm Hardware Pack**, secure the front of the amp plate to both sides of the center console.



Use the **(B-HPM520-2) M5x20mm (x2) and M5 Washer (x2) Hardware Pack** to secure the rear portion of the amplifier bracket and the center console's side



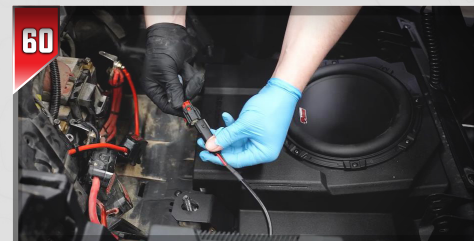
Using a **T35 Torx bit**, secure the **rear subwoofer mounting brackets (B-MBP3752)** to the enclosures with the included **(B-HPM612HHW14-4) hardware pack**, using the four **M6 x 12mm hex head screws and washers**.



Before installing the enclosure, clean the frame rails thoroughly and apply the included foam strip to the center rail.



For both enclosures, with the subwoofer side facing up, slide the front of the enclosure under the seat's front brackets, then position the rear brackets over the seat's rear bolts.



Plug the **subwoofers 2-pin harness** into the **(B-H2703) Subwoofer Harness**, coming from the amplifier. Repeat for both subwoofers..

MAVERICK R MAX
REAR-SEAT SUBWOOFER ADD-ON KIT
INSTALLATION



Using a **T35 Torx bit** and the provided screws from **(B-HPM612HHW14-4) M6x12 Hex Head screws hardware pack**, secure the enclosure to the seat's mounting brackets. Repeat for both subwoofers.



Once your subwoofer is installed, reconnect the battery terminals and test to confirm your speakers are working as intended. **To reassemble the vehicle, follow steps 1-37 in reverse order**



MAVERICK R MAX
REAR-SEAT SUBWOOFER ADD-ON KIT
INSTALLATION



818-991-1778

SUPPORT@SSVWORKS.COM

SSV WORKS CORPORATE

4610 Calle Quetzal, Camarillo, CA 93012

SSV WORKS (LOCATION #2)

1212 E Venture Dr. #100, St. George, UT 84790