

HyperSpin Attraction SYSTEM User Manual

Thank you for choosing KINHINK products!

Here is a quick guide to guide you through the use of this product. Our YouTube channel also has a lot of helpful tutorial videos, so scan the QR code below to check them out.



NOTE BEFORE WE GET STARTED:

●Recommended configuration: 10th-generation i5 processor or later and RTX1060 or later.

●Please do not delete any files on the hard disk, otherwise it may cause unknown problems.

●Before you start please ensure that your computer is fully up to date using Windows Updates. (THIS IS VERY IMPORTANT) !Also, install any optional updates except language packs that are not required.

●Certain graphics cards such as NVIDIA can sometimes have problems with certain emulators. Please ensure you have the latest drivers installed for your graphics card if you do find you have any problems.

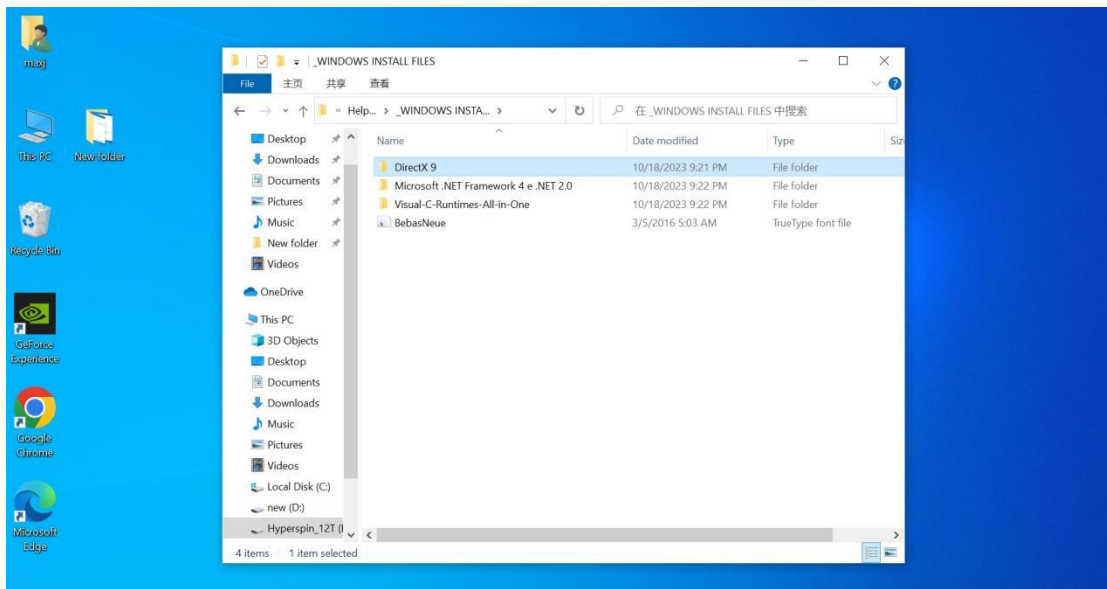
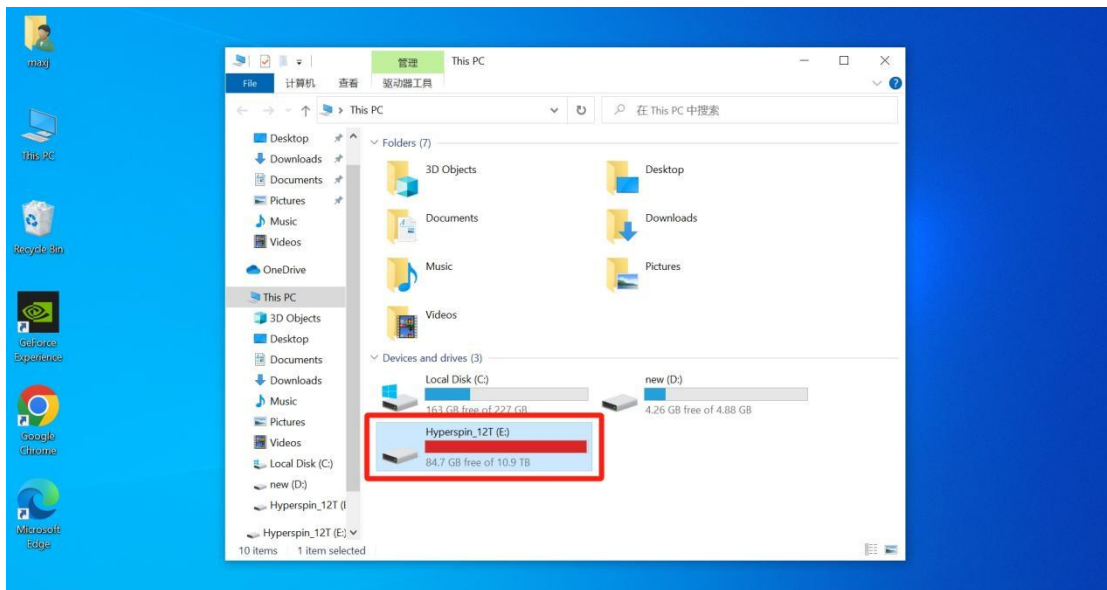
●If videos are all garbled then turn off "Hardware Acceleration" in your graphics options or go here :

<https://adobe.ly/3BgjGp9>

when on this abode page, install Flash if you don't have it, then go to "5. Verify if Flash Player is installed" Then right-click and you will see the hardware acceleration box. Just untick it.

System dependent installation

After connecting the hard drive to your computer you will see it in Disk Management. Find the corresponding folder to install the plug-ins required for system operation. (File path: HyperSpin Attraction——Help_faqs——_WINDOWS INSTALL FILES)

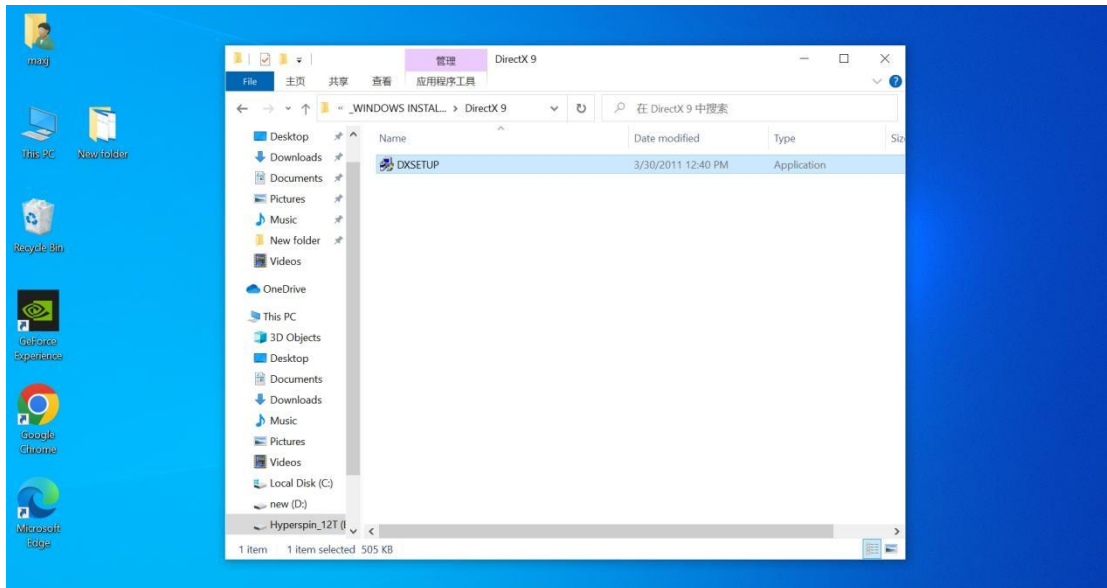


● STEP 1 – Install “DirectX9”

File path: HyperSpin Attraction\Help_faqs_WINDOWS INSTALL

FILES\Direct X9\DXSETUP.exe

Please follow the procedural steps to install.



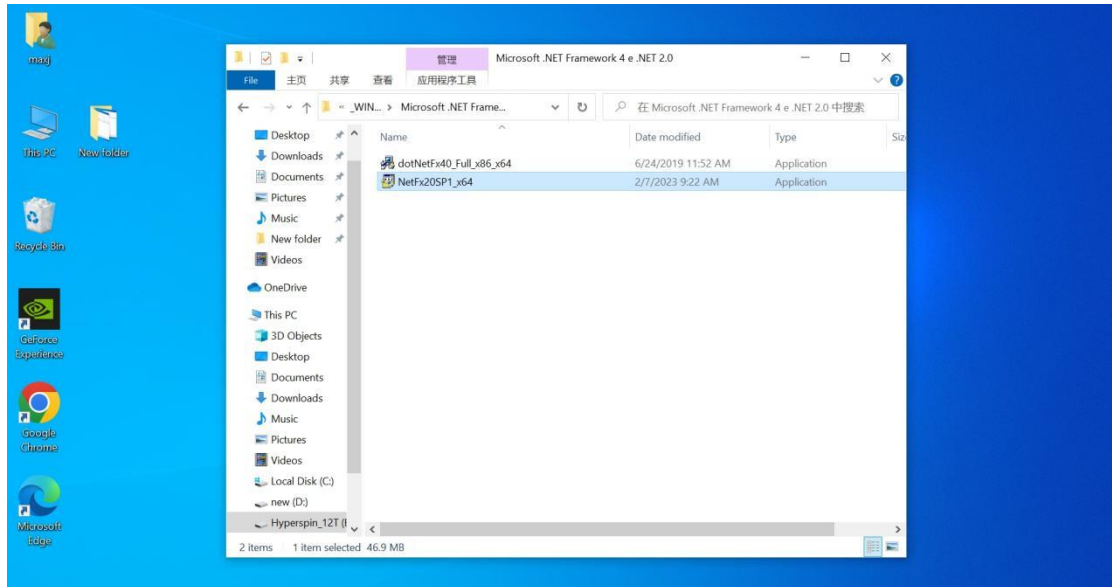
● STEP 2 – INSTALL NET 2.0

File path: HyperSpinAttraction\Help_faqs_WINDOWSINSTALL

FILES\Microsoft.NETFramework\2.0\dotNetFx40_Full_x86_x64.exe

HyperSpinAttraction\Help_faqs_WINDOWSINSTALLFILES\Microsoft.NETFramework\2.0\NetFx20SP1_x64.exe

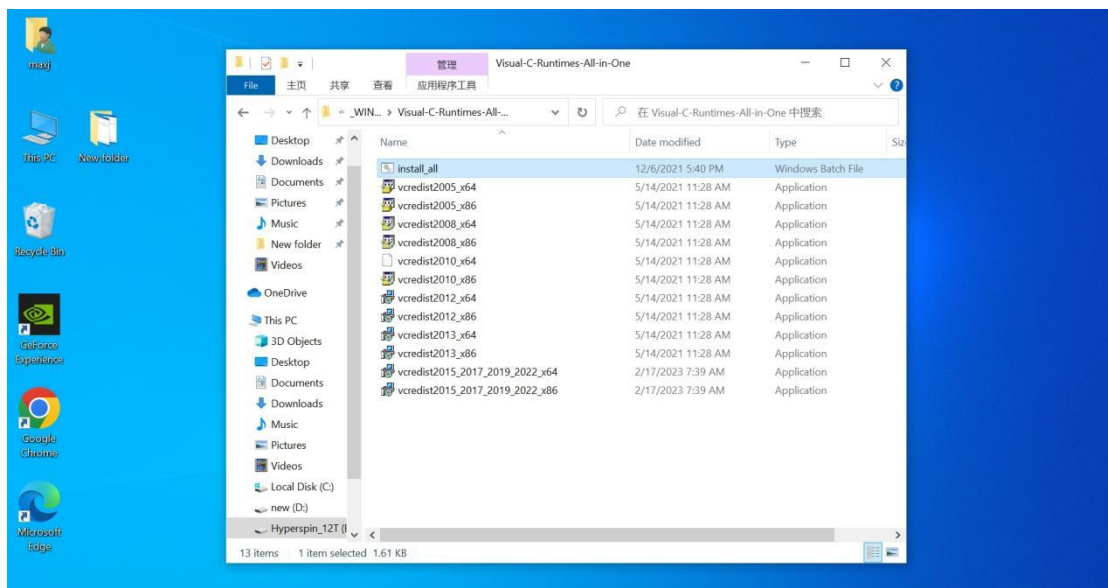
Please follow the procedural steps to install.



● STEP 3 – INSTALL VISUAL-C-Runtimes

File path: HyperSpin Attraction\Help_faqs_WINDOWS INSTALL FILES\VISUAL-C-Runtimes\install_all.bat

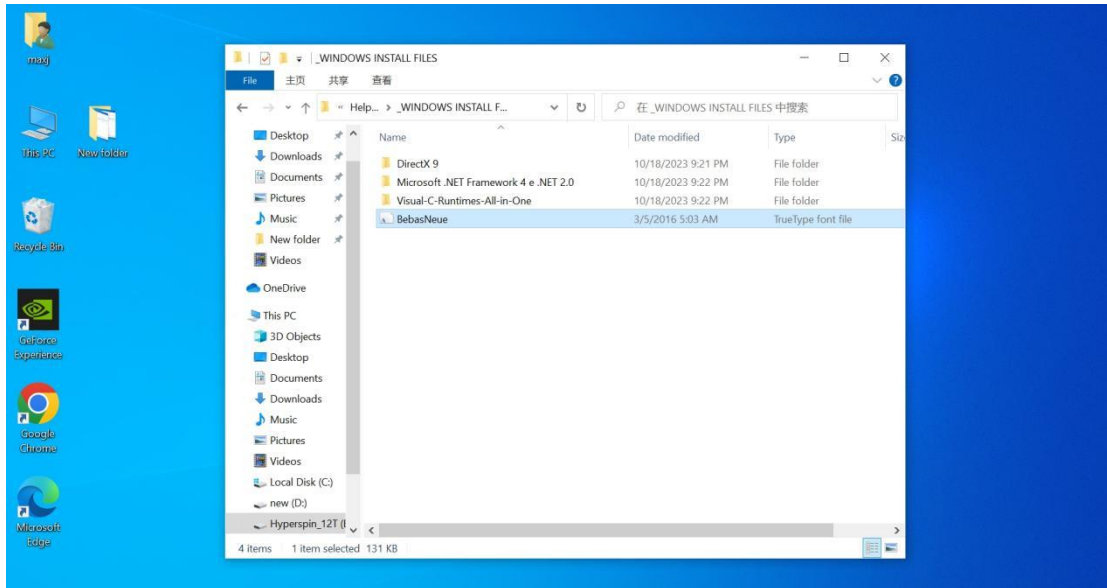
Double-click “install_all” to install all programs (No need to install one by one)



● STEP 4 – Install Bebasneue

File path:HyperSpin Attraction\Help_faqs_WINDOWS INSTALL FILES\BebasNeue.ttf

Right-click “BebasNeue.ttf” and select Install

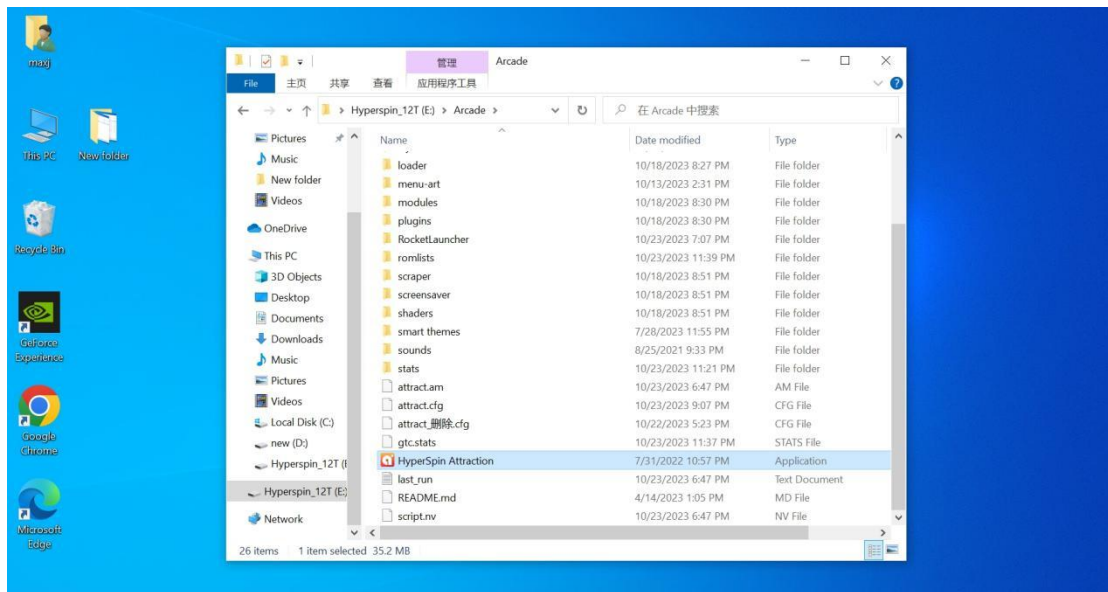


Once this is complete you are ready to use your HyperSpin Attraction drive.

● STEP 5 – Open HyperSpin Attraction

Double-click “HyperSpin Attraction” to enter the game system

File path:HyperSpin Attraction — — Arcade — — HyperSpin Attraction.exe



PC Games Tips :

When you open the PC game, the firewall will prompt you to allow the Internet, please select allow or agree. Some PC games are running for the first time and have network requirements. If the firewall prompts you whether to allow it, select “Allow” .

If you want to change the language or if the game is not full screen, please change the language or resolution settings in the game settings/options.

About the controller keys:

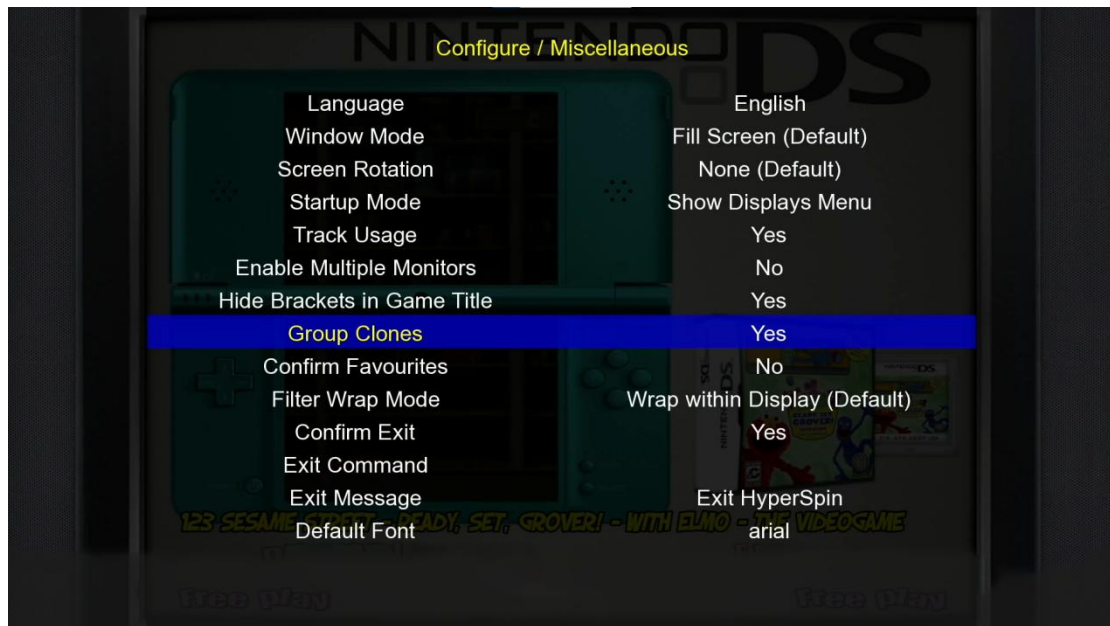
File path: **HyperSpin Attraction\Controls.png**



Questions about number of games:

Group Clones ON OR OFF:

System navigation is divided into three levels; You can bring up the system menu by pressing 'TAB' or the 'L3+R3' key on your gamepad, and then merge or unmerge Clones of your game with the General-Group clones option. (As shown below)



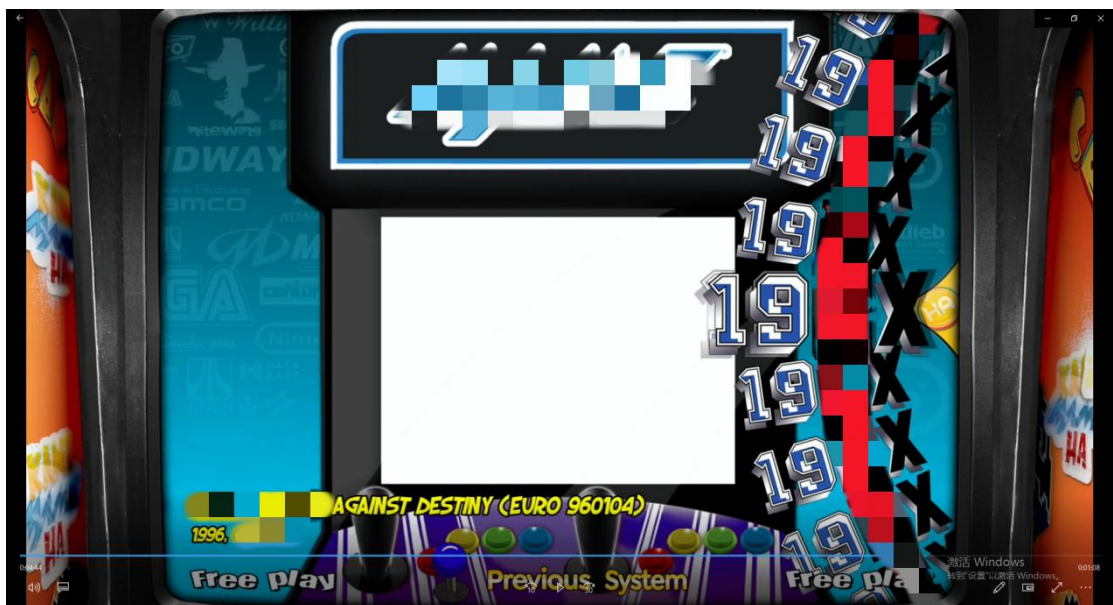
The number of games shown by the game system is the number of games in the level 2 navigation, so when you open the Group Clones you will see a small number of games, but the specific clones you can see by going to the level 3 navigation;

1) This 12TB hard drive contains over 100,000 games, but only 40,000 + games are displayed on the All Games page because there are some different versions of the clone games set up by Group Clones. These Clones games are on level 3

2) Level-2 (As shown below)



3) At Level 3 you can see many different versions of the game, although the game name is the same. (As shown below)



How to Escape back to HyperSpin Attraction main menu after playing a game ?

- 1) We set the xbox controller or xbox mode controller as the default controller of the system, and set the "Select" + "Start" button as the game exit button;
- 2) Most emulators can also exit the game by pressing the "Q" key on the keyboard. If you can't exit the "fade" page for a long time, you can forcibly exit the game by "Q + S";
- 3) If you run into some questions, please go to
Look for instructions in the **HyperSpin Attraction \ Help_faqs \ technical** directory, if you don't have the answer you want, please contact us.

NOTE: ON SYSTEMS TAITO TYPE X/X2 TAITO NESICAXLIVE AND TEKNOPARROT some games exit by clicking down on the right analog stick. This is due to the emulators/gamesloader options being different on certain games.

Enjoy your drive and Thanks again.

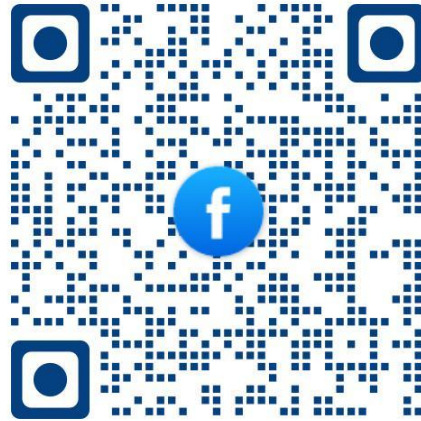
PS:

● IF YOU ARE HAVING TROUBLE FOLLOWING THIS GUIDE OR ANY OTHER QUESTIONS/PROBLEMS PLEASE LET ME KNOW.

● DO NOT CHANGE ANY SETTINGS ON THIS DRIVE UNLESS YOU KNOW WHAT YOU ARE DOING.

This is a huge system, if you encounter any problems, please contact us, and we will based on your feedback, regular corrections, and updates to the system, you only need to download our update file.

KINHANK E-mail:kinhank003@gmail.com



Product list:

1*HDD

1*Data cable

1*Power supply

1*User manual