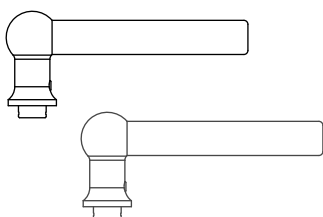


Unsprung Installation Instructions

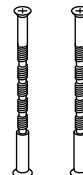
Contents



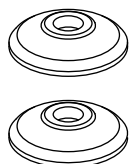
Handles



Wood Screws



M4 Through Bolts



Roses



Thread Lock

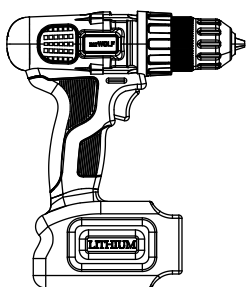


Grub Screws

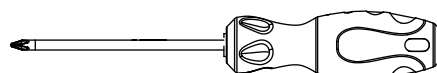


Fixing Plates

Tools you'll need



Drill



Cross head Screw Driver



12mm Drill Bit



8mm Drill Bit



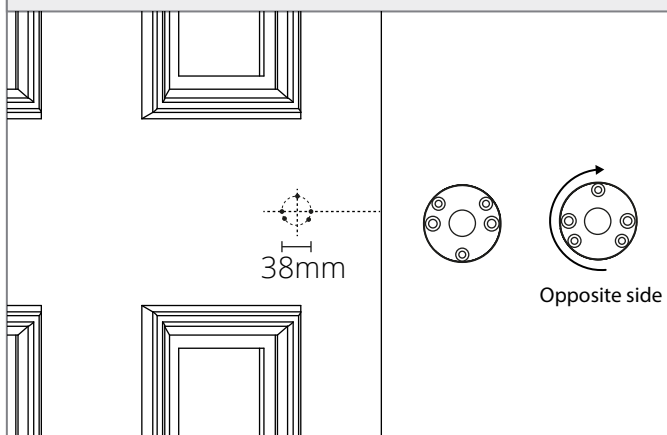
2mm Drill Bit



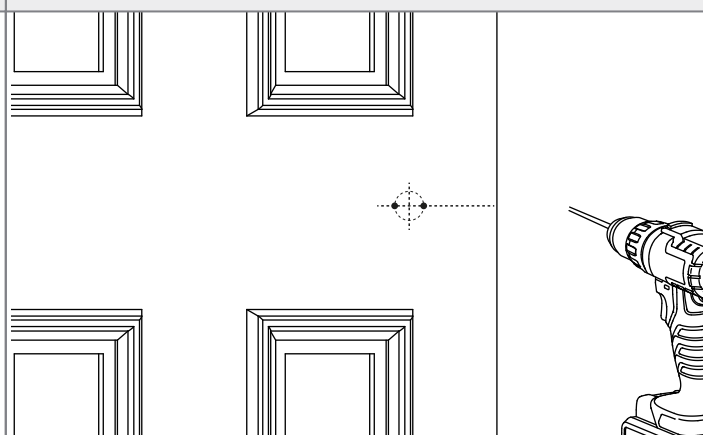
Pliers

Unsprung Installation Instructions

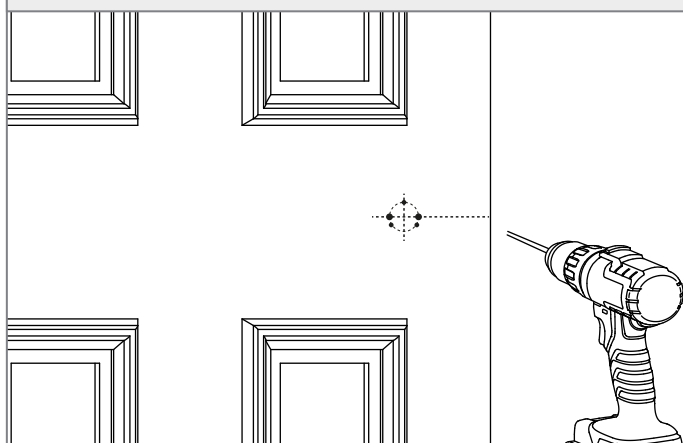
1 Mark the centre lines and hole spacings on both sides the door



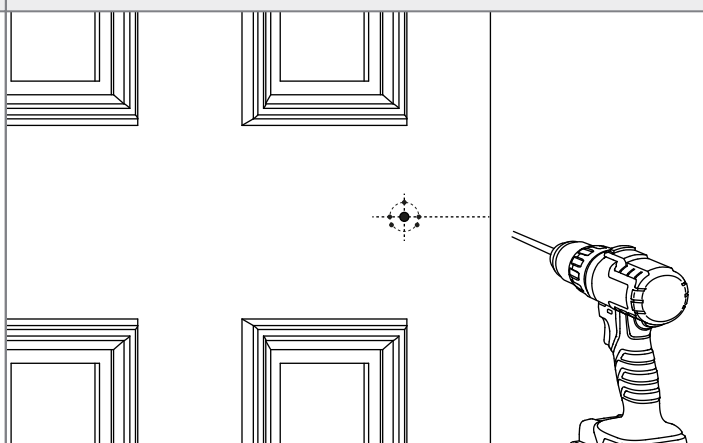
2 Drill holes through the door for the through bolts with the 8mm drill bit



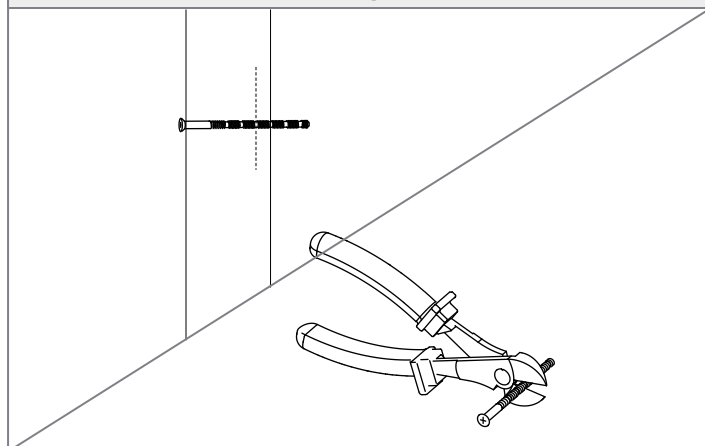
3 Drill pilot holes for the wood screws with the 2mm bit



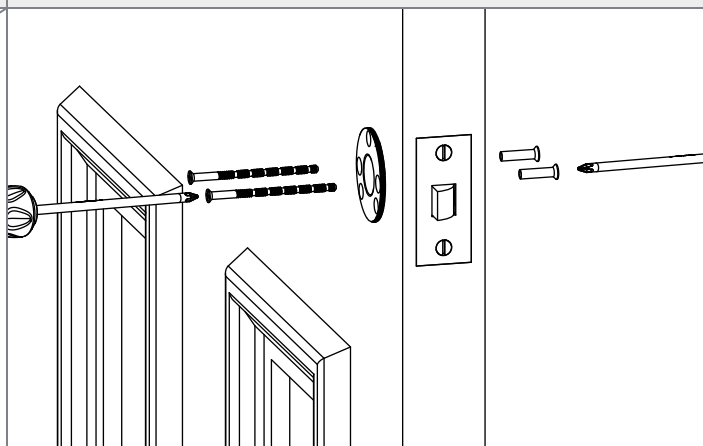
4 Using the 12mm drill bit, drill through the centre for the spindle



5 Clip snap off screws to size so that they are smaller than the depth of the door

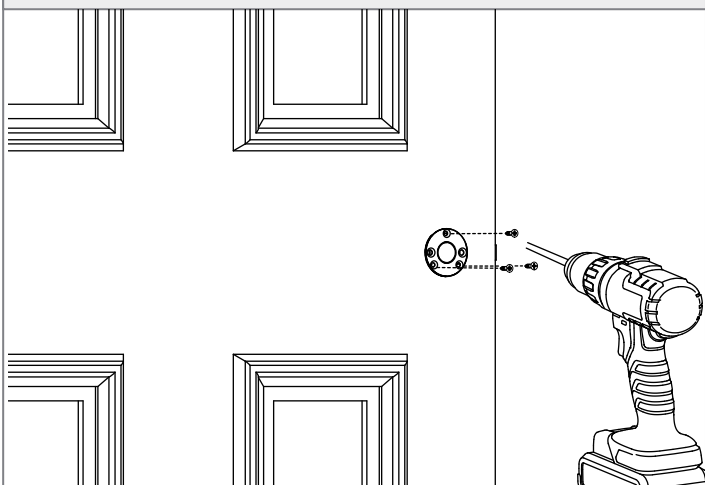


6 Screw the fixed spindles to the door with the through bolts

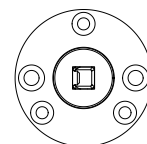
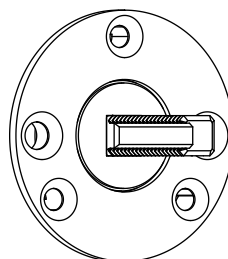


Unsprung Installation Instructions

7 Drive the wood screws into the door

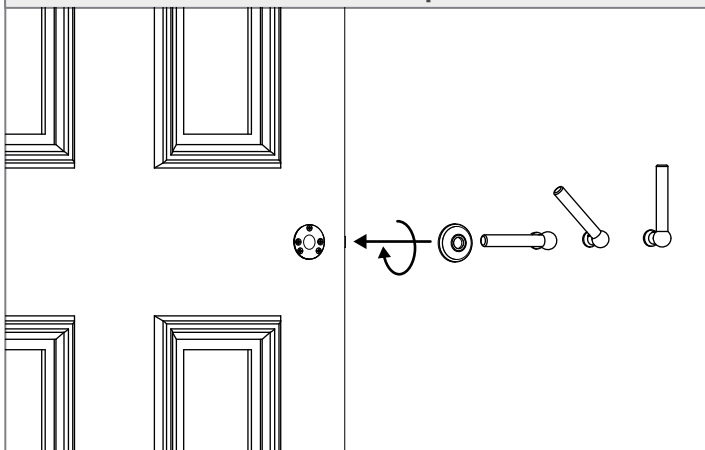


8 Check the spindle fits. The groove in the spindle needs to face away from the door

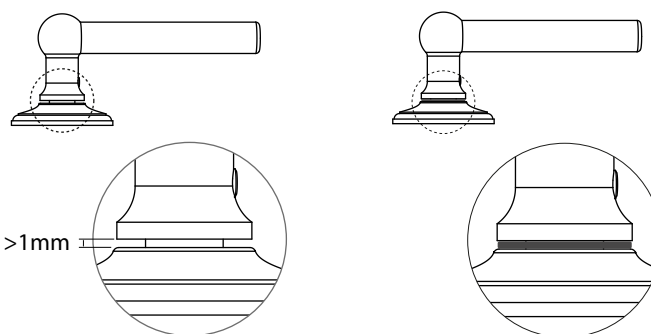


Correct orientation

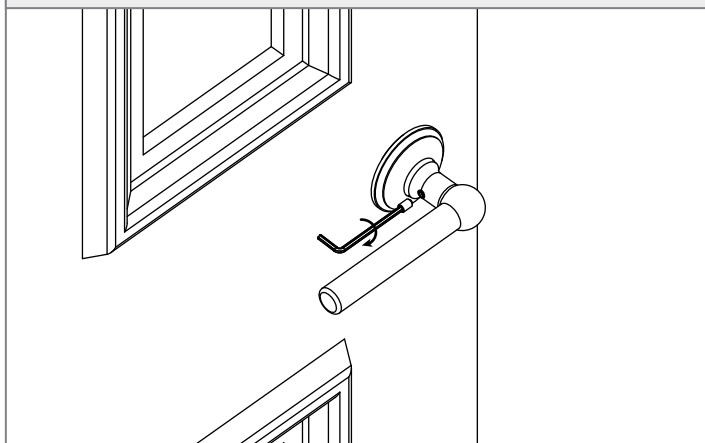
9 Screw the rose on to the fixing plate and then the handle on to the spindle



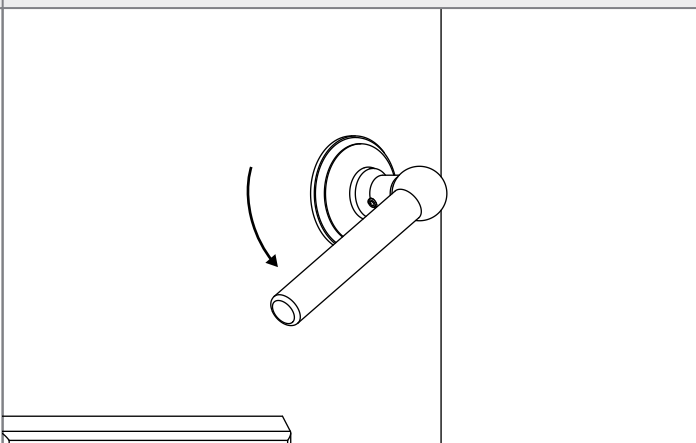
10 If after screwing the handle on there is a gap bigger than a 1mm between the handle and rose, use the washer to fill the gap



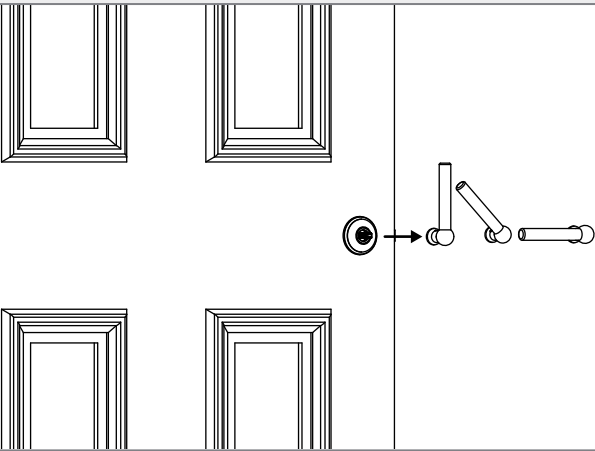
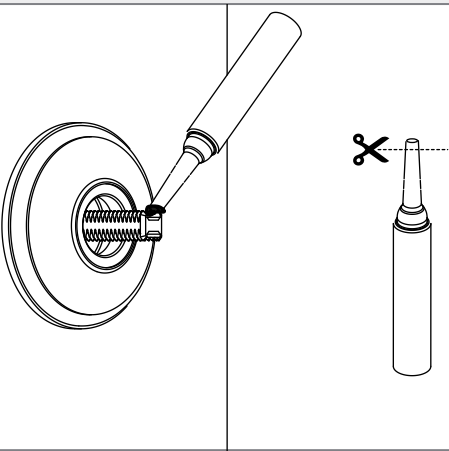
11 Screw the grubscrew in to the handle and make it it is level



12 Check the handles turns smoothly



Installation

13 Uninstall the handle	14 Apply the provided thread lock to the spindle
	
15 Replace the grub screw in the handle with the grub screws with pre-applied threadlock	16 Tightly screw in the grub screw and wait for the threadlock to set
