

[Home](#) » [Technical Center](#) » GBT-USBC-PD

GBT-USBC-PD

IEEE 802.3bt To USB-C 3.0 (Gigabit Data Rate)

Welcome to the PoE Texas Manual for the patented GBT-USBC-PD (designed for iPad, Microsoft Surface, and Samsung) that delivers wired Power and Gigabit Data for your USB Type C devices!

The purpose of the manual is to help you quickly and effectively navigate the installation and functions of your new Power Over Ethernet Converter.

Our goal is to make our products as intuitive and simple to use as possible, so we value your feedback and questions directly to us at service@poetexas.com. Phone +1-512-479-0317.

Or you're always welcome to leave questions or comments on our product page: [GBT-USBC-PD](#)



Navigation

PLEASE DO NOT READ THIS MANUAL STRAIGHT THROUGH!

We have divided this manual up into sections to make it easier and faster for you to navigate. You can simply pick what you're doing below and get the information you need quickly.

[What's Inside](#)

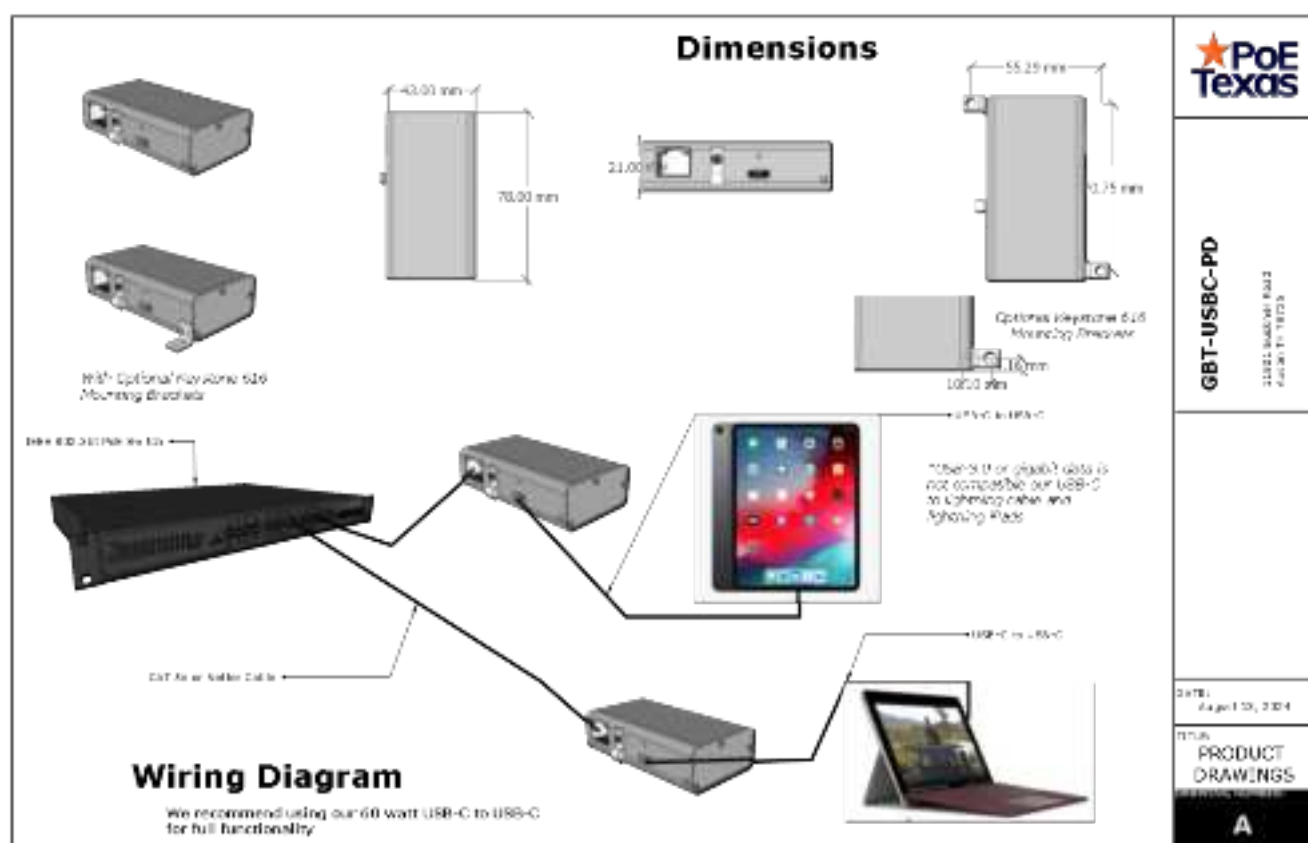
[General Installation](#)

[Configuration](#)

[Technical Specifications](#)

[Subscribe to Keep Up To Date](#)







Configuring Your Cisco Enterprise POE Switch for 2 Event PoE Classification

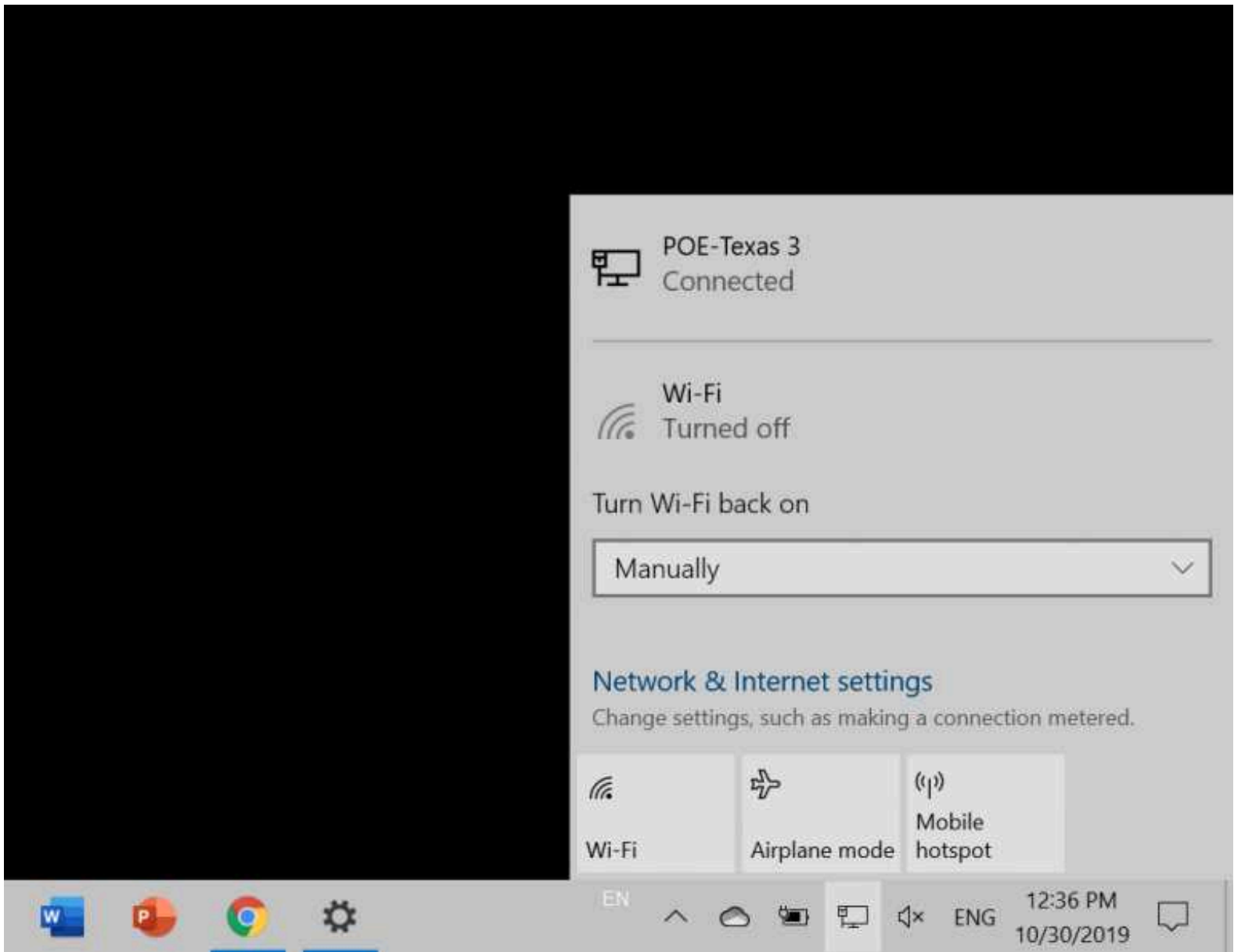
Yeah, I know that's a mouthful. Here's the simple translation. Cisco enterprise switches including the 9400 and 9300 models, which is a lot of them, come with a default setting that makes them less compatible PoE+ devices like the GBT-USBC-PD. You'll know the setting isn't right because our device won't power on correctly, and your device won't charge. How frustrating!

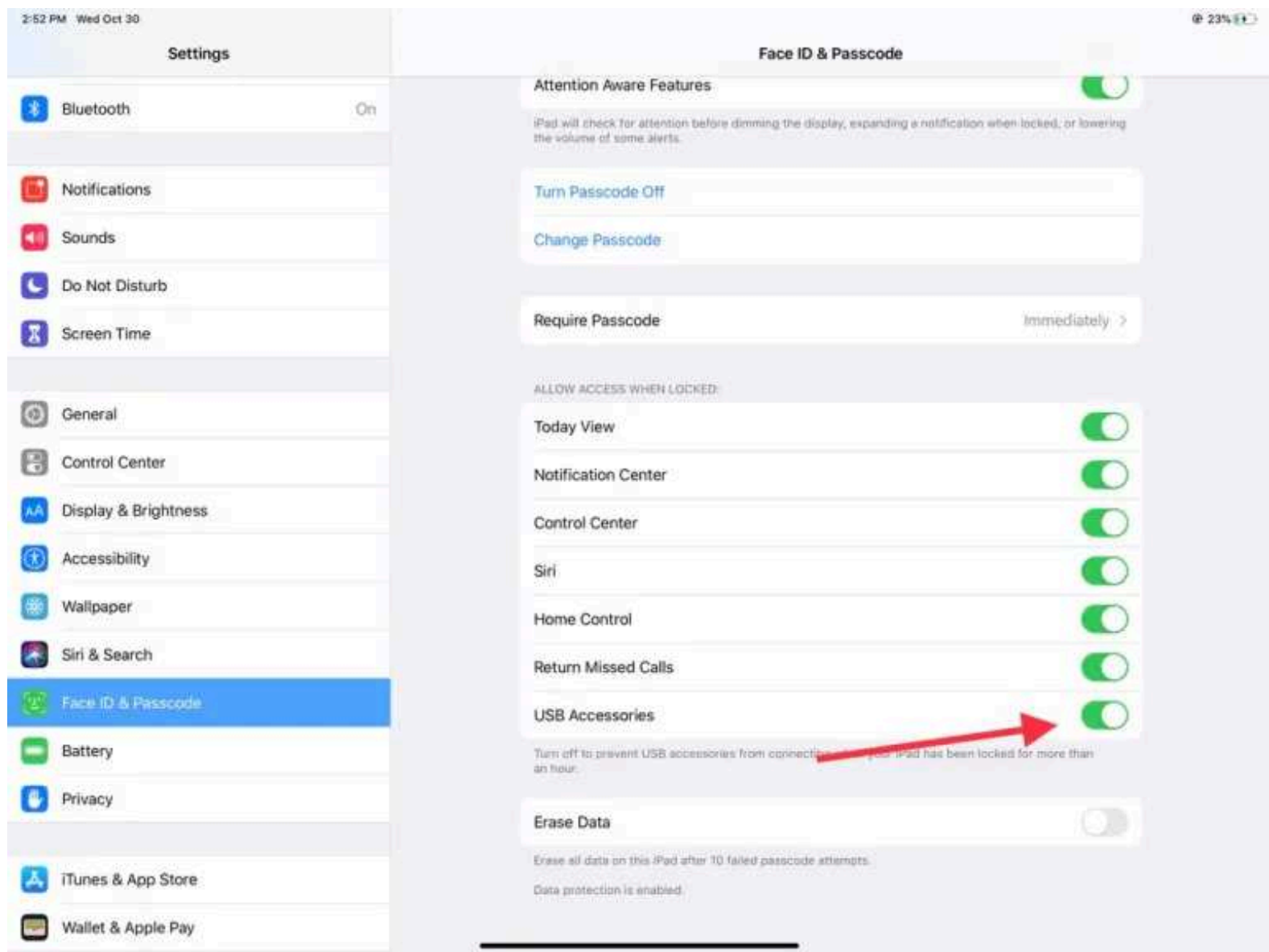
It's a simple enough fix. You simply need to configure the ports that will power the GBT-USBC-PD to have 2 event classification. You can find the Cisco documentation on how to do that here: [CONFIGURE MY SWITCH](#)

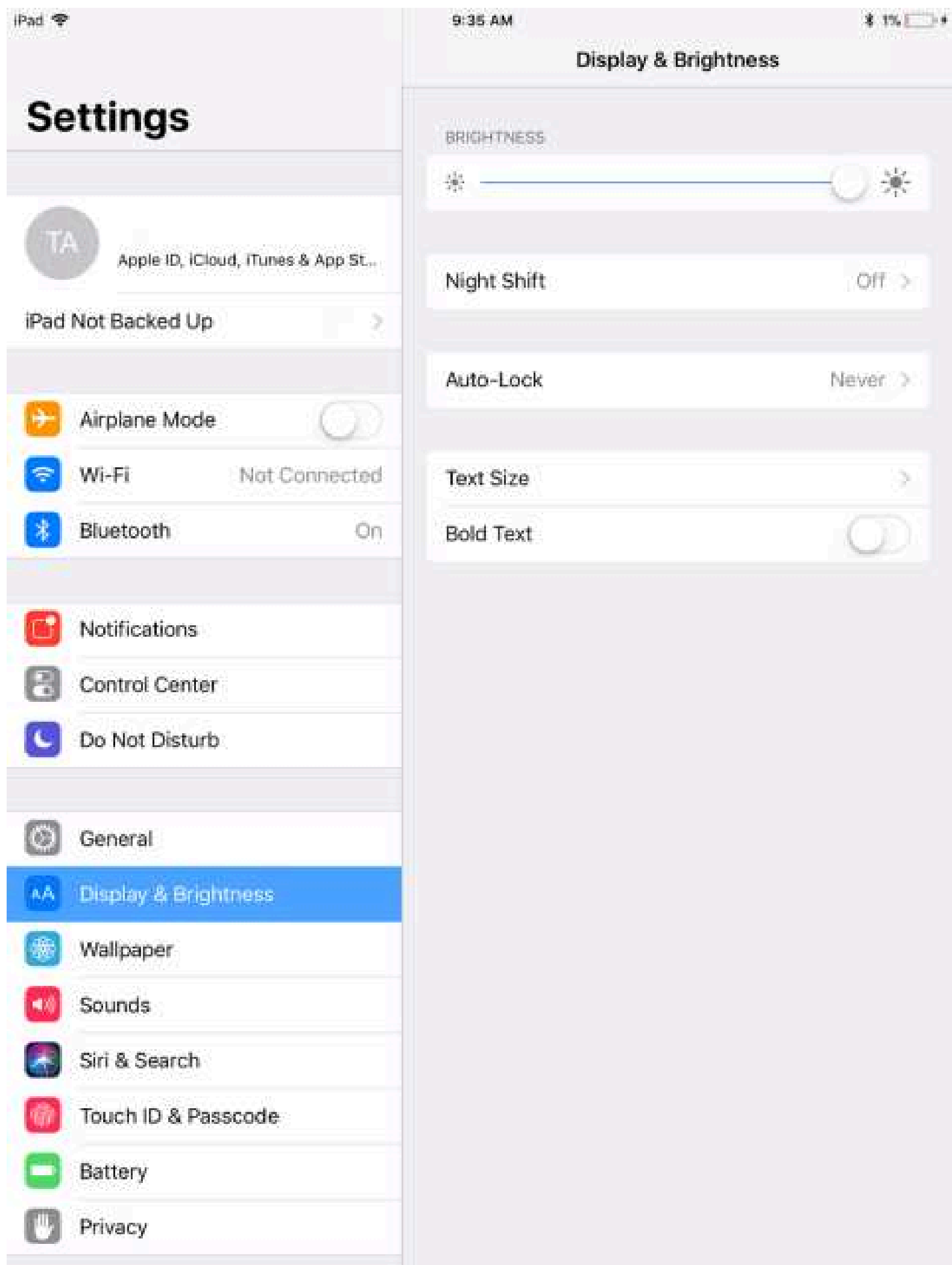
Or here are the steps you take after you've logged into the terminal.

```
Switch> enable
Switch# configure terminal
Switch(config)# interface gigabitethernet2/0/1
```

```
Switch(config-if)# power inline port 2-event
Switch(config-if)# end
```







You can still set up your iPad to not automatically lock on a timer. When the screen locks if you would like the screen always on.

- Go to the Settings icon on your iPad
- Select Display & Brightness
- Select Auto Lock
- Set the limit to Never

The splitter will auto-configure the IP settings to default as soon as you connect it up including Dynamic IP addressing.

Settings

[Back](#)

Auto-Lock

-  Airplane Mode ☐
-  Wi-Fi POE-Texas
-  Bluetooth On

 Notifications


 Sounds

 Do Not Disturb

 Screen Time

 General

 Control Center

 Display & Brightness

 Wallpaper

 Siri & Search

 Touch ID & Passcode

 Battery

 Privacy

 iTunes & App Store

 Wallet & Apple Pay

 Passwords & Accounts

2 Minutes

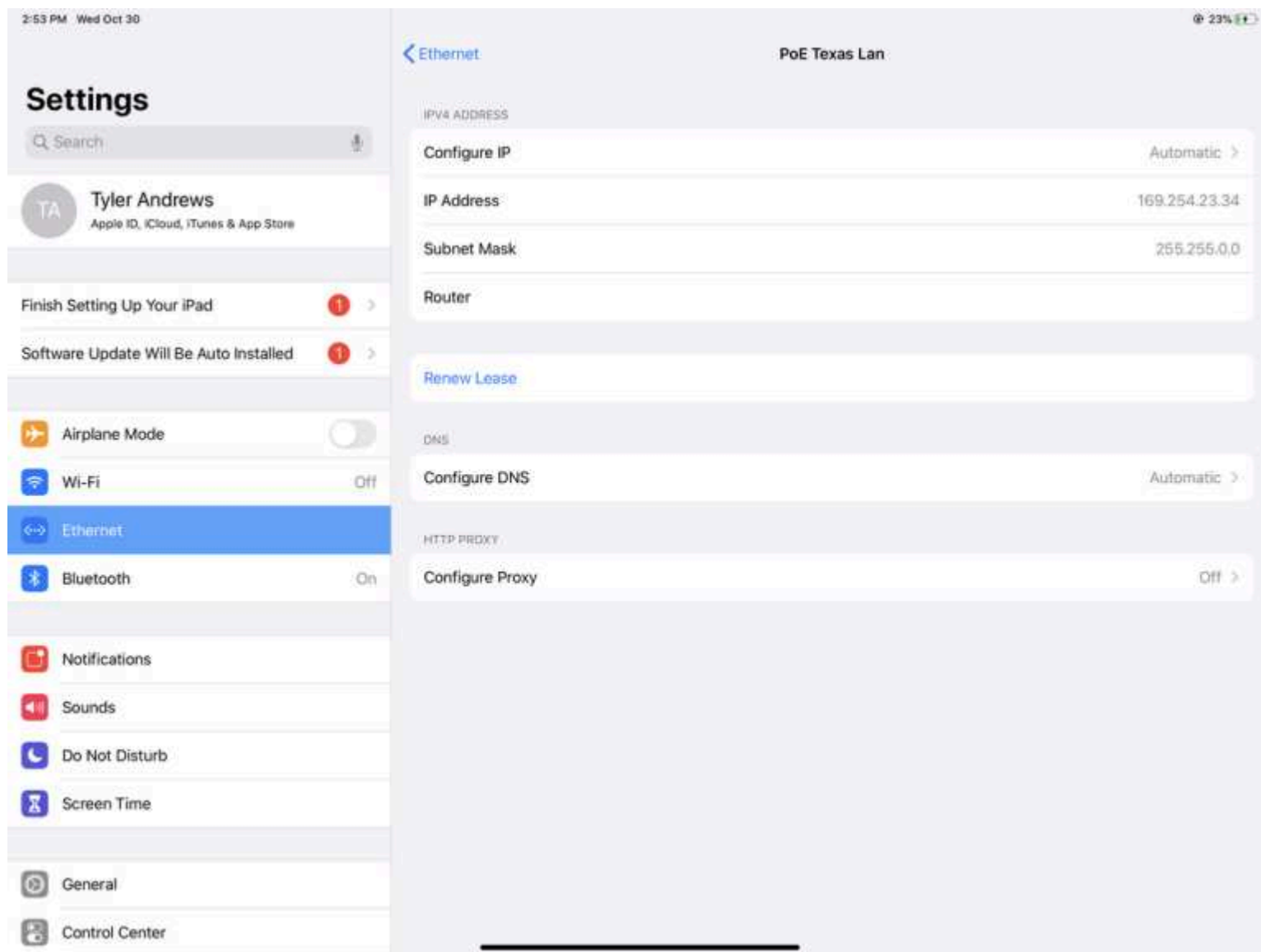
5 Minutes

10 Minutes

15 Minutes

Never





1. Navigate to General Settings, then you'll see a symbol for the LAN <...>
2. Select this and you'll see the option for PoE Texas LAN, select it

You'll see your IPV4 IP address information. If it shows "Automatic", that means your getting a dynamically assigned IP address.

If you'd like to reconfigure the IP address, DNS, and HTTP Proxy settings, you can do that by selecting these options.

The most used option will be fixing your IP address by selecting the "Automatic" button.

For the other networks settings, we'd recommend talking to a service provider or give us a call: 512-479-0317 or service@poetexas.com.

Best Practices for iOS Updates

Despite Apple’s excellent reputation for ensuring backward compatibility with their iPads and iPhones, practical experience with a recent iOS update has revealed that even they can miss things which can temporarily lead to disruption of service for your device. If your device must be reliable 24/7, we recommend these following best practices:

- Go to Settings -> General -> Software Updates -> Automatic Updates
- Deselect “Install iPadOS Updates”
- Before choosing to install the next update, please check into our iOS Compatibility Table to check whether we have finished testing the performance of an new iPadOS version

iOS Compatibility Table

- Finally, to get emailed live updates on iOS compatibility, subscribe to our mailing list for iOS compatibility

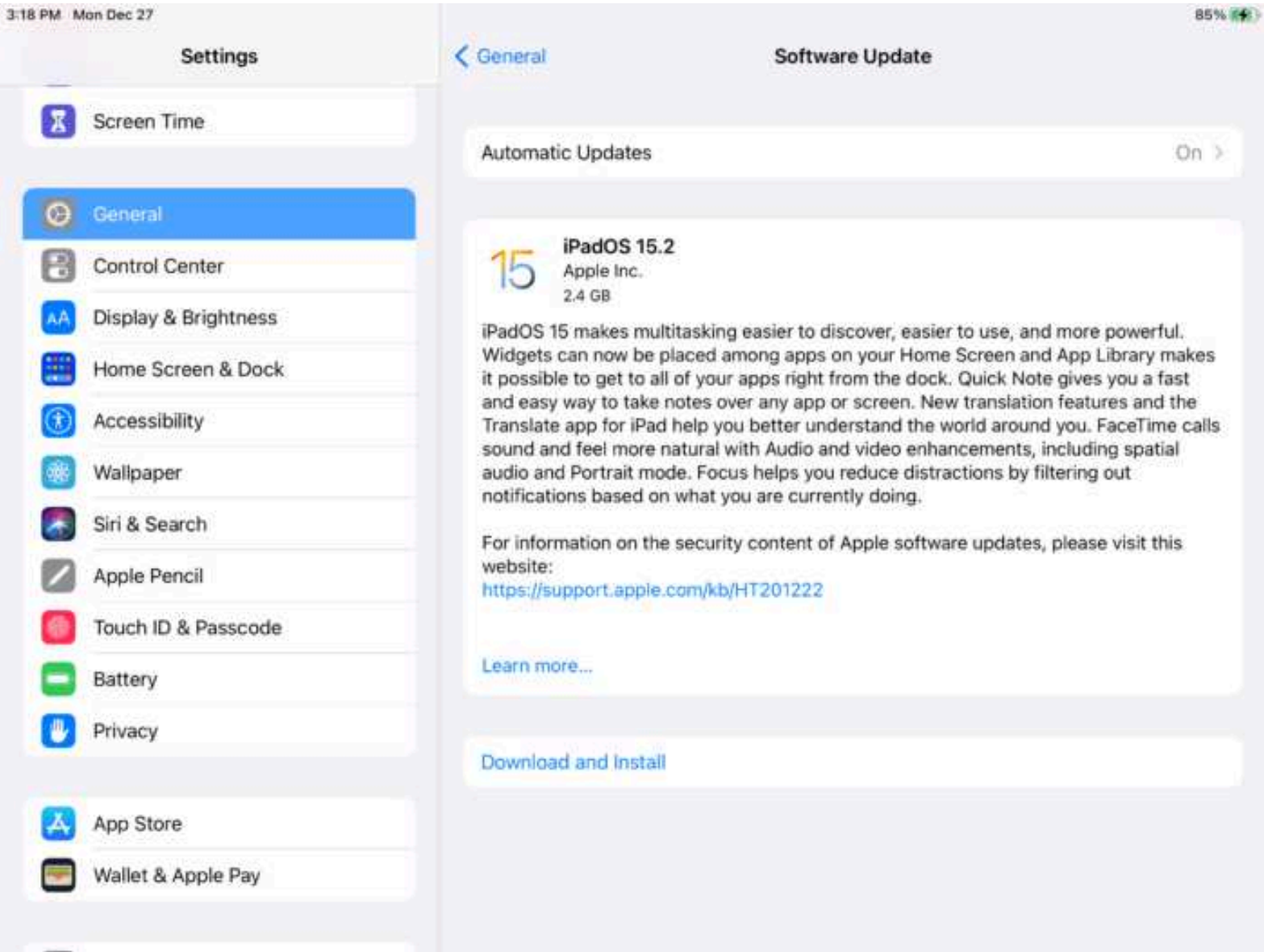
Fields marked with an * are required

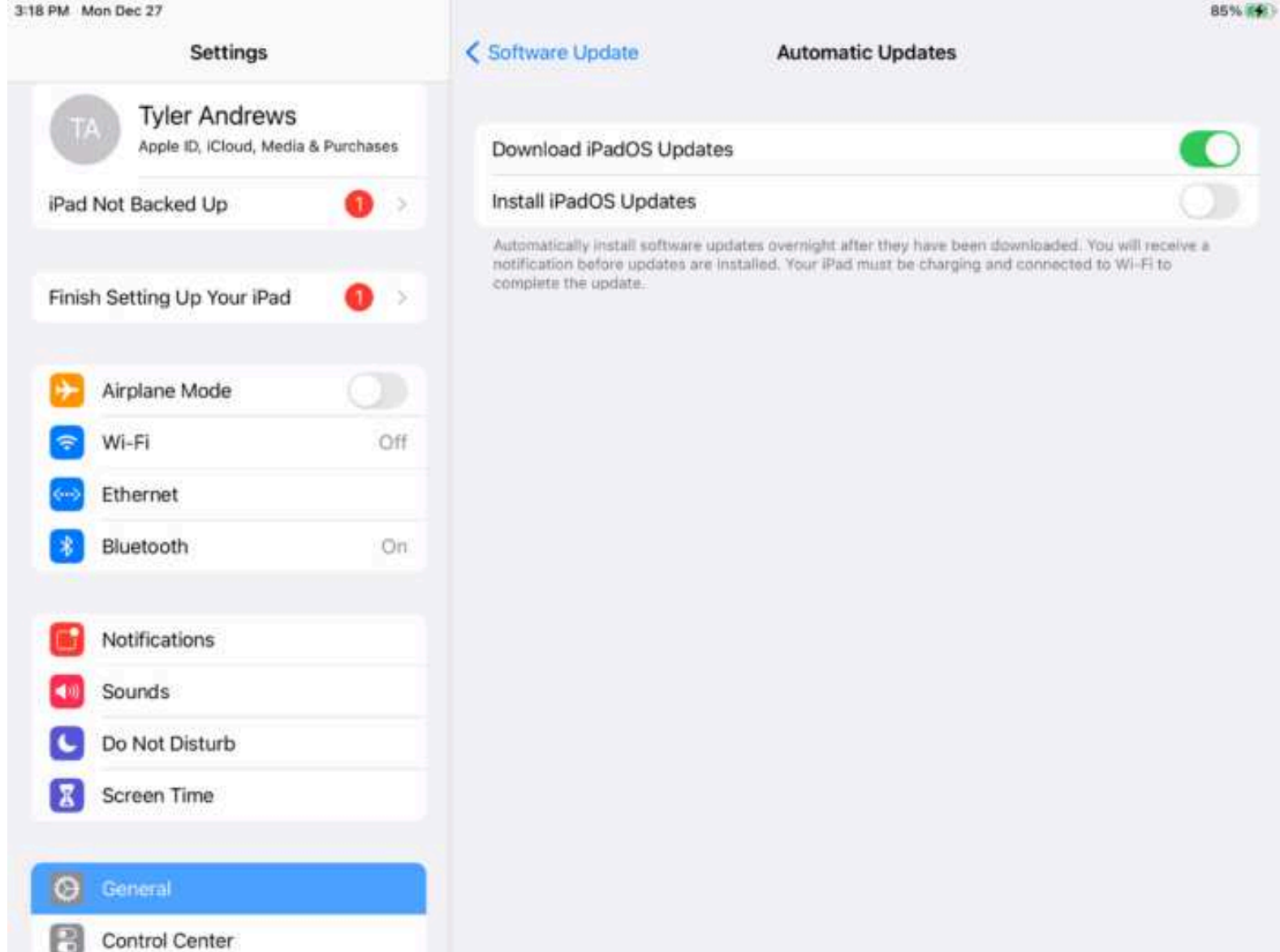
First Name

Last Name

Email *

Submit





Android (Samsung Tab and Google Pixel)

If you're using a Samsung Tab A model year prior to 2019, you may experience some difficulties establishing the wired data connection. Please contact service@poetexas.com if you're experiencing compatibility issues with your Samsung device.

Otherwise, simply confirm the data by looking for the Ethernet symbol on the upper right. No configuration necessary.

