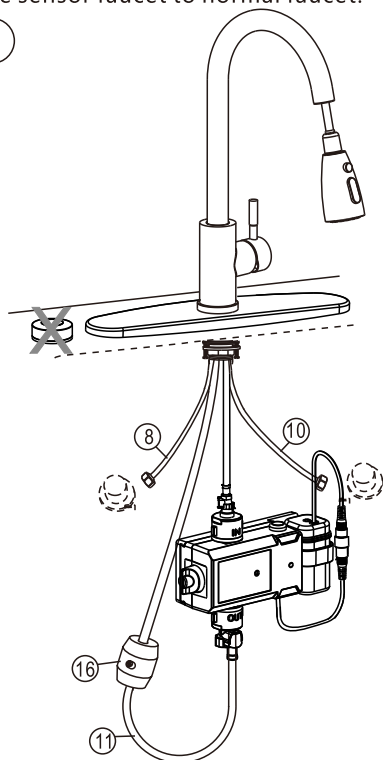
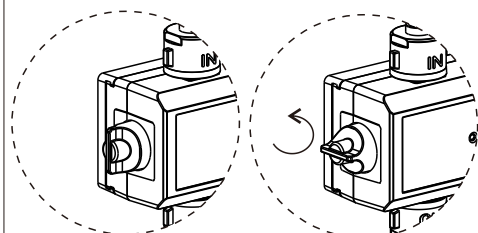


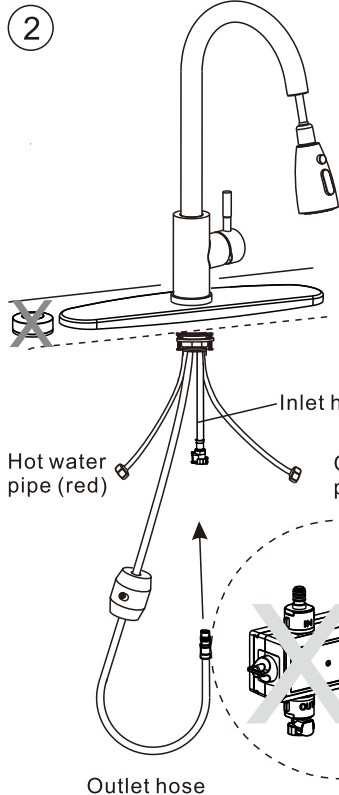
①



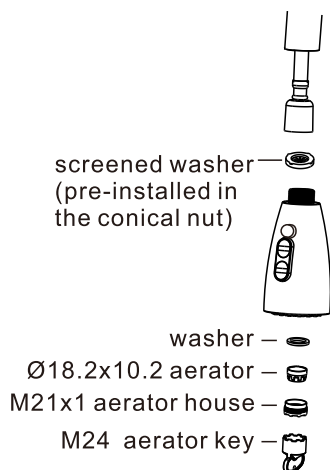
non-sensor mode



With 1.8 gpm are compliant with California water efficiency regulations, Complies with California Proposition 65 and with the Federal Safe Drinking Water Act.

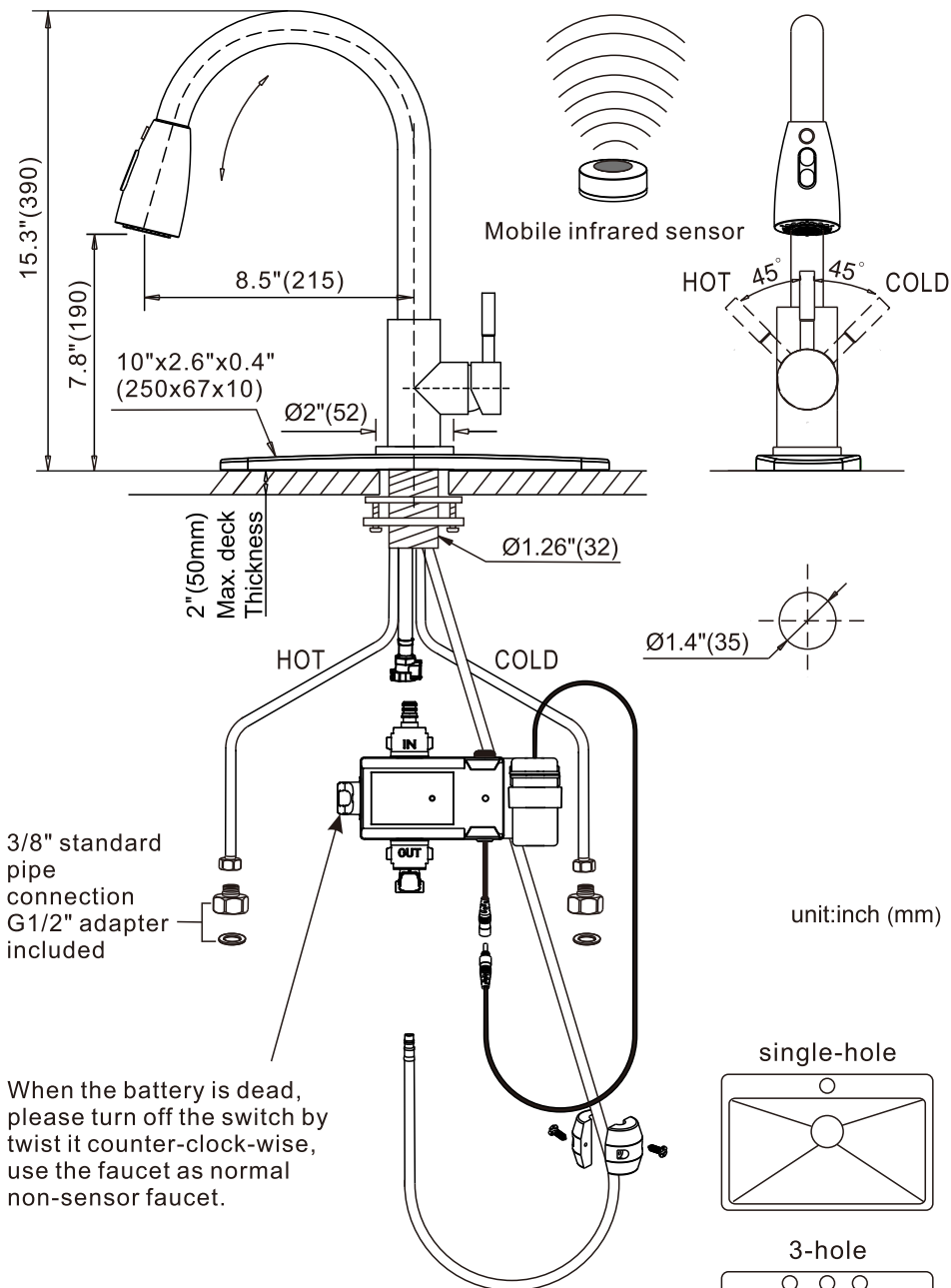


2. Unplug the wire, remove the sensor box, inlet hose and outlet hose, connect the pull down inlet hose to the quick connect hose of faucet.



1.8GPM 6.8L/min

2310301-MS



Not included the CR2450 batteries

Not included the 4 pieces of AA batteries