

## Air Compression Recovery System



### User Manual

Please read the instructions carefully before use and keep it well for further reference.

### Contents

Safety Precautions .....	1
FAQs .....	2
Specifications .....	3
Troubleshooting .....	4
Product Description .....	5
Operating Instructions .....	6
Notes after Use.....	7
Cleaning.....	8
Storage & Maintenance.....	10
Disposal.....	10
Package includes .....	10
Contact Us .....	10

### Safety Precautions

Please read the following safety precautions carefully to ensure safe and correct use of the QUINEAR Air Compression Leg Recovery System

#### Warnings

No modification of this equipment is allowed.

- 1.If you experience severe pain, any unusual symptoms, or want to remove the sleeves in an emergency during use :
  - Press the power button to stop the device or disconnect the hoses;
  - Remove the sleeves and consult your doctor.
- 2.Consult your doctor before using this device if you have any of the following conditions:
  - Experiencing inflammation, an infection, pain of unknown origin, at or near the site of application;
  - Have bone fractures or dislocations at or near the site of application
  - Receiving medical treatment, or have a contraindication requiring the use of any medical control unit.
  - Using pacemaker or other medical devices which are susceptible to electrical interference;
  - Suffering from malignant tumors;
  - Suffering from cardiac diseases;
  - Suffering from osteoporosis;

- 1 -

- Having serious peripheral neuropathy dysfunction or sensory disturbance caused by diabetes;
- Being unsuitable to do the massage because of traumas on the body;
- 3. Keep it out of the reach of infants, children and people without the ability to use it independently.
- 4. Don't use other power adapter but the original one.
- 5. Don't scratch, damage, process, excessively bend, pull or twist the power cord of power adapter.
- Otherwise, it may cause fire or electric shock.
- 6. It is not allowed to use when the power adapter dysfunctions or the plug is loose.
- 7. Don't plug or unplug the power adapter with wet hands.
- 8. Don't put the control unit in the quilt or use the machine in high temperature condition.
- 9. It is forbidden to remodel, disassemble or repair the machine without permission.

### Cautions

1. Only use the power supply provided with the system. Using a different power supply may cause the system to operate incorrectly.
2. Don't use it in the bathroom or other humid places.
3. Keep it out of the reach of children.
4. Unplug the power adapter when you are not using it.
5. Don't walk around when you are using this device or wearing the sleeves.
6. Do not leave the system, power supply, or any accessories where they could be damaged by children, pets, pests, or liquids.
7. The attachments are designed to be used by only one person at a time.

### FAQS

Q1: How dose this product work?

A1: This is an air compression device. 4 air chambers(foot, lower calf, upper calf and thigh) inflated and deflated with a sophisticated sequence to stimulate hand kneading and stroking, maximizes blood flow throughout the body to help with reduced muscle soreness and/or pains to the treated areas, and improve circulation.

Q2: How many massage modes, and what's the difference?

A2: There are 3 massage modes, please check the difference as below:

- 2 -

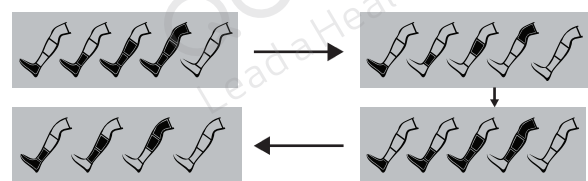
Mode1: Sequence Mode



Mode 2: Circulation Mode



Mode 3: Combination Mode



Q3: What should I do if I feel the massage strength is too weak or too strong?

A3: There are 8 levels of massage intensity available, please select the intensity which is fit for you. If you still feel it's too strong at the lowest setting, please stop using the device, we suggest to consult your doctor before next use.

Q4: How long should I use it?

A4: It is recommended to use it once or twice a day, no more than 30 minutes at a time. But you can use it longer if you feel too tired and want it to massage longer to work on the soreness.

Q5: Can I only apply on one leg?

A5: Both sleeves need to be connected to make it work, you can wear one of the sleeve on the desired leg and let another sleeve lay aside which will also

- 3 -

inflated/deflated at the same time even with nothing inside. We suggest to use both sleeves at the same time to get a better relief.

Q6: Why does the control unit make sound?

A6: The sound comes from the working air pump in the control unit, providing air continuously to the airbags in the sleeves, it's a low sound and that's a normal phenomenon.

Q7: When should I use this product?

A7: This product pushes the blood to flow, effectively remove muscle soreness and fatigue, you can use it anytime you want. You can use it before workout to warm up your muscles, use it after exercise for better and faster recovery, or use it when you back home after a long day work.

### Specifications

Model	QN-071A
Name	Air Compression Recovery System
Adapter	AC Input: 100~240 Volts, AC 50/60Hz, DC Output: 12V 1A
Rated Power	12W
Compression Mode	3 Modes : Sequence- Circulation- Combination
Intensity Levels / Pressure Range	8 Levels : Low -50 / 60 / 70mmhg; Mid-80 / 90 / 100mmhg; High-110 / 120mmhg
Time	3 choices : 20 / 25 / 30 minutes
Product Weight	3KG
Package Weight	14KG
Sleeve Type	4-Chambers sleeve - Foot / Lower Calf / Upper Calf / Thigh
Leg Boots Size - Small	Inseam: 31.5 in; Max Thigh width: 26.8 in Max Foot width: 13 in
Leg Boots Size - Medium	Inseam: 33.9 in; Max Thigh width: 28.3 in Max Foot width: 14 in
Leg Boots Size - Large	Inseam: 35.4 in; Max Thigh width: 31.5 in Max Foot width: 15 in

- 4 -

Shenzhen Quinear Electronic Commerce Co., Ltd.

Building 3, Tiananyungu Industrial Park, Xuegang RD.,  
Bantian Street, Longgang District.



service@quinear-ec.com

www.quinear-ec.com

### Troubleshooting

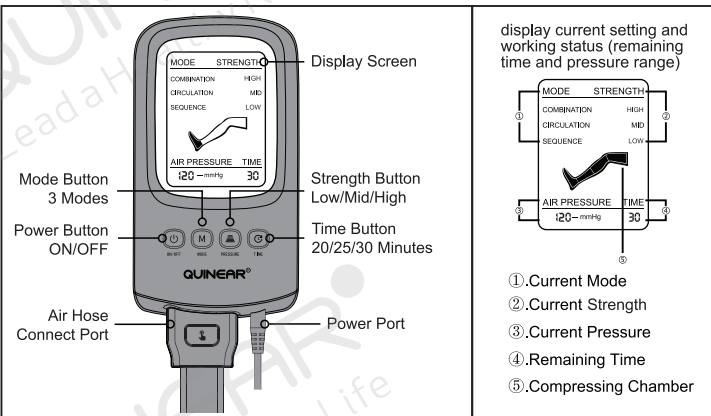
Problems	Possible Causes	Solutions
Doesn't work and screen is off	1.Power is not turned on. 2.Adapter is not securely connected. 3.Faulty wall outlet.	1.Press the power button to turn the control unit on. 2.Make sure the power adapter is connected well to the control unit and the wall outlet. 3.Check if the wall outlet works.
The screen is on but the sleeves doesn't work	1.Only connect one of the sleeves with the air hose. 2.Air hoses are not securely connected. 3.The sleeves have been damaged.	1.It works only when 2 sleeves are connected to the air hose. 2. Please check if the air hoses are inserted correctly and completely to the control unit and the junction box ( pay attention to the 'UP' mark). 3.Check if the sleeves have air leak, if there is, please contact our customer service at service@quinear-ec.com.
Break off during operation or stop pumping	1. Air hoses are not securely connected. 2.The power adapter falls off. 3.The treatment session time is up.	1.Please check if the air hoses are inserted correctly and completely to the control unit and the junction box( pay attention to the 'UP' mark). 2.Make sure the power adapter is connected well to the control unit and the wall outlet. 3.The device will shut off automatically when the pre-set timing is up, press the power button to start a new session if needed;

\* You're welcome to reach us at service@quinear-ec.com if further assistance is needed.

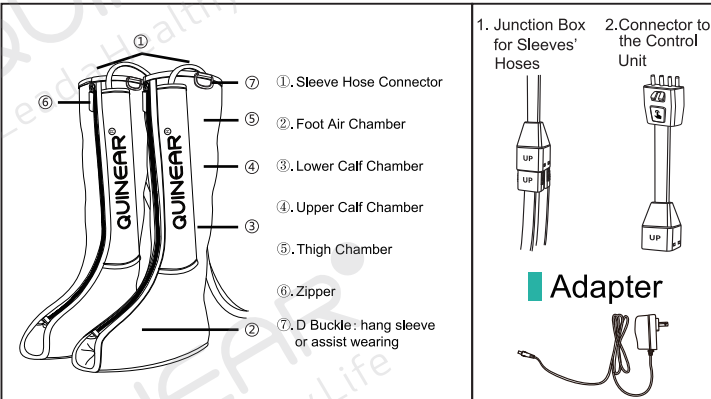
- 5 -

### Product Description

#### Control Unit



#### Massage Sleeve



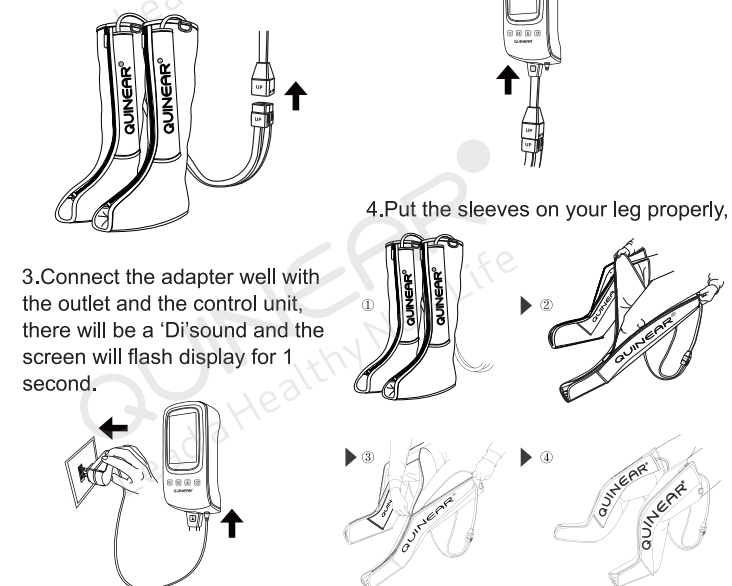
- 6 -

### Operating Instructions

Please read safety precautions carefully before using the product. In order to get better massage, please use it according to the instruction.

1. Inserting the sleeve hose connectors firmly to the hose.
- 2.Connect the hose to the control unit, you will hear an audible 'click'.

\* Two sleeves need to be connected to make it work.



#### Tips:

- \* Please make sure the zipper is zip up completely before wearing, never try to use the system with the zipper partially or totally unzipped
- \* You can use the D Buckle on top of the sleeve to assist with putting it on quickly.

- 7 -

5.Find a comfortable position sitting, reclined, or lying down. Press the power button to start.

- 1). There is a 'Di' sound, the screen will be light up and display current setting
- 2). It will begin with default setting of: Mode 1(Sequence Mode) , Min Intensity (the lowest), 20 minutes timing

6.Press mode button to change the massage mode, 3 modes optional, see the difference in FAQS A2 session.

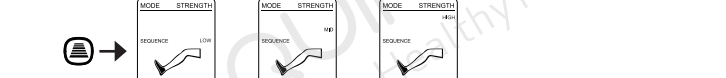


7.Press intensity button to adjust air pressure intensity, 8 levels available.

\* We suggest you start with low intensity for the first use, gradually increase after you get used to it.



8.Press the time button to change between 3 treatment session time, 20 mins, 25 mins or 30 mins. The time can be adjusted anytime while the session is running.

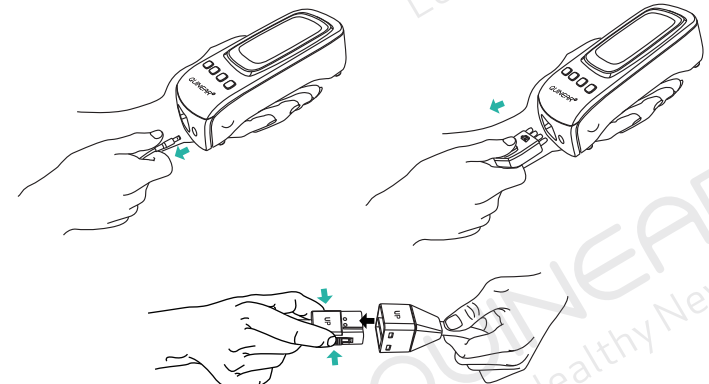


9.The device will automatically shut off after the treatment time is up, you can press the button if you wanna enjoy more or end the massage earlier at any time.

- 8 -

### Notes After Use

- 1.If you are done using the device, turn off the control unit by pressing the power button, and disconnect the adapter from the control unit and the outlet.
- 2.Disconnect the hose from the control unit by pressing the button on the top of it and pulling away.
- 3.Disconnect the sleeves from the hose, remove the them from your legs.
- 4.Pack all the accessories into the original package or into the storage bag.



### Cleaning

- Make sure to cut off the power before you clean the device.
- 1.If dirty, please wipe the control unit, sleeves and hoses with a damp, clean cloth.
  - 2.Dry thoroughly with a clean cloth.
  - 3.Don't use gasoline, alcohol, diluent and other irritating liquid to wipe the machine in case it causes malfunction or the components are damaged or discolored.
  - 4.Don't allow foreign matters to enter the hoses.
  - 5.Don't dry clean.

- 9 -

### Storage & Maintenance

- 1.Don't disassemble the device by yourself. It has no user-serviceable parts. When service or repairs are required, please contact customer service at service@quinear-ec.com.
- 2.Keep it out of the reach of infants, children and people without the ability to use it independently.
- 3.Don't place it in high temperature and humidity condition.
- 4.Avoid direct sunlight.
- 5.Avoid needles puncture the sleeves and hoses.
- 6.Don't place heavy stuff on it.
- 7.Keep the open ports of the control unit, hose interconnect, and power in let free of debris.
- 8.Do not allow lint or dust to accumulate on the control unit or the hose interconnects. If lint or dust accumulates, wipe down the system with a dry cloth before use.

### Disposal

Please adhere to the local regulations when you dispose of the wasted

### Package includes

- 2 x Massage Sleeves(with hoses attached)
- 1 x Control Unit
- 1 x Air Hose Connector
- 1 x Power Adapter/ AC100~240 V, 50/60Hz; DC12V1A
- 1 x User Manual
- 1 x Portable Storage Bag

### Contact Us

If you have any problems during use, please feel free to contact our after-sales support team at any time.  
E-mail: service@quinear-ec.com  
Note: Please tell us your order number along with the problems you meet in the email, Pictures or videos are welcomed for faster and better service.

- 10 -