

# Momax Ultra-Air Plus IoT UV Hot & Cool Purifying Fan

(Model: AP7S)

## HKBN Home User Guide



## Table of Contents

Download HKBN Home App .....	4
Add Device .....	5
Control Device .....	9
- Main Control Panel .....	9
- Switch On/Off .....	10
- Adjust Wind Speed .....	11
- Oscillation .....	12
- UV-C Light .....	13
- Auto-off timer function .....	14
- Mode Selections .....	15
- Heater Mode .....	16
Scene (Smart Action) .....	17
Automation (Smart Action) .....	19
Device Information .....	22
- Check for Firmware Upgrade .....	23
- Remove Device .....	24
Product Specifications .....	25
Product Maintenance and Warranty .....	26

# Product Description

This user guide is to introduce the usage of HKBN Home App for this product with smart action examples only. For the following details, please refer to the instruction in the package:

- Product Overview;
- Introductions of LED screen and Modes;
- Instructions of Remote Control;
- Warnings;
- Maintenance and Filter Replacement etc.

## Download HKBN Home App



Search and download “HKBN Home”  
APP in Apple App Store OR Google  
Play Store

OR

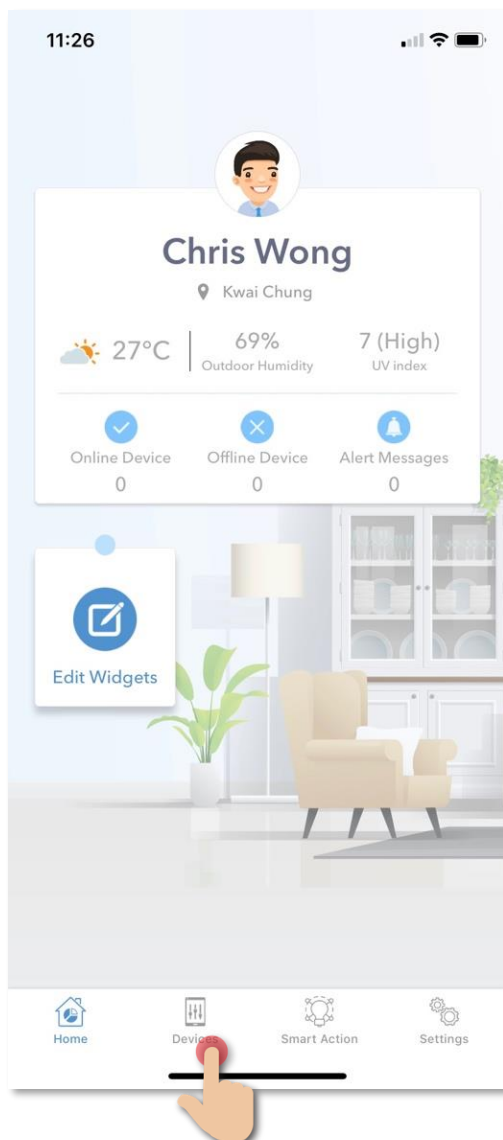
Scan the QR code below



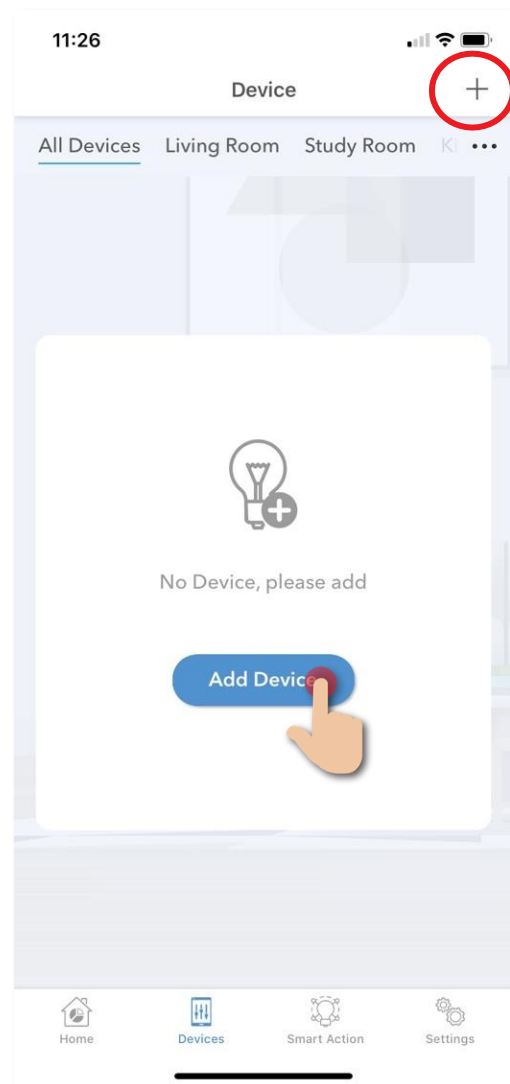
# Add Device

1. You must first connect your phone to a 2.4GHz Wi-Fi network when adding device.
2. Tap “Devices” on the bottom menu. (image 1)
3. Tap “Add Device” button OR “+” icon at top right corner if you already have paired device. (image 2)

(image 1)



(image 2)



# Add Device

4. Tap “Ultra-Air IoT UV Hot & Cool Purifying Fan” from left menu “MOMAX”. (image 3)
5. Connect power, hold the ON/OFF button until the Wi-Fi indicator blinks. (image 4)

(image 3)



(image 4)



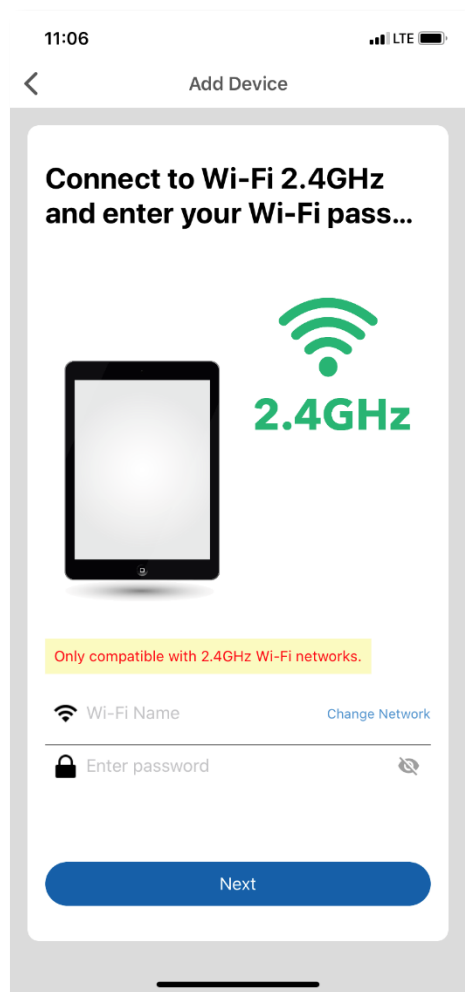
# Add Device

6. Select 2.4GHz Wi-Fi network and enter password\* and then tap “Next”. (image 5)
7. Please wait a moment while your device is in pairing process. (image 6)

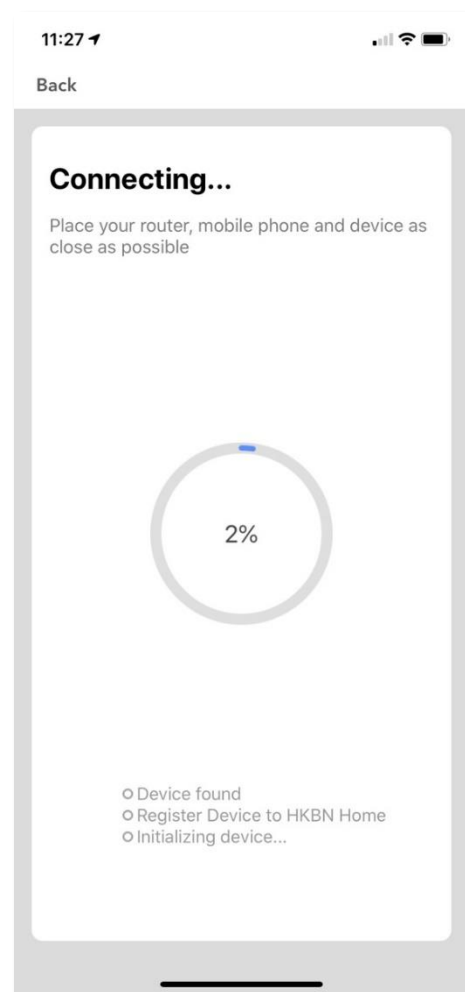
## \*Important tips: Wi-Fi requirement

- Currently all smart devices are compatible to **2.4GHz network** only. Please make sure that your device and mobile are connected with 2.4GHz but not 5GHz Wi-Fi network.
- If you have 5GHz network and by using the same network name (SSID) as the 2.4GHz network, please temporarily turn off the 5GHz network first before adding device.

(image 5)

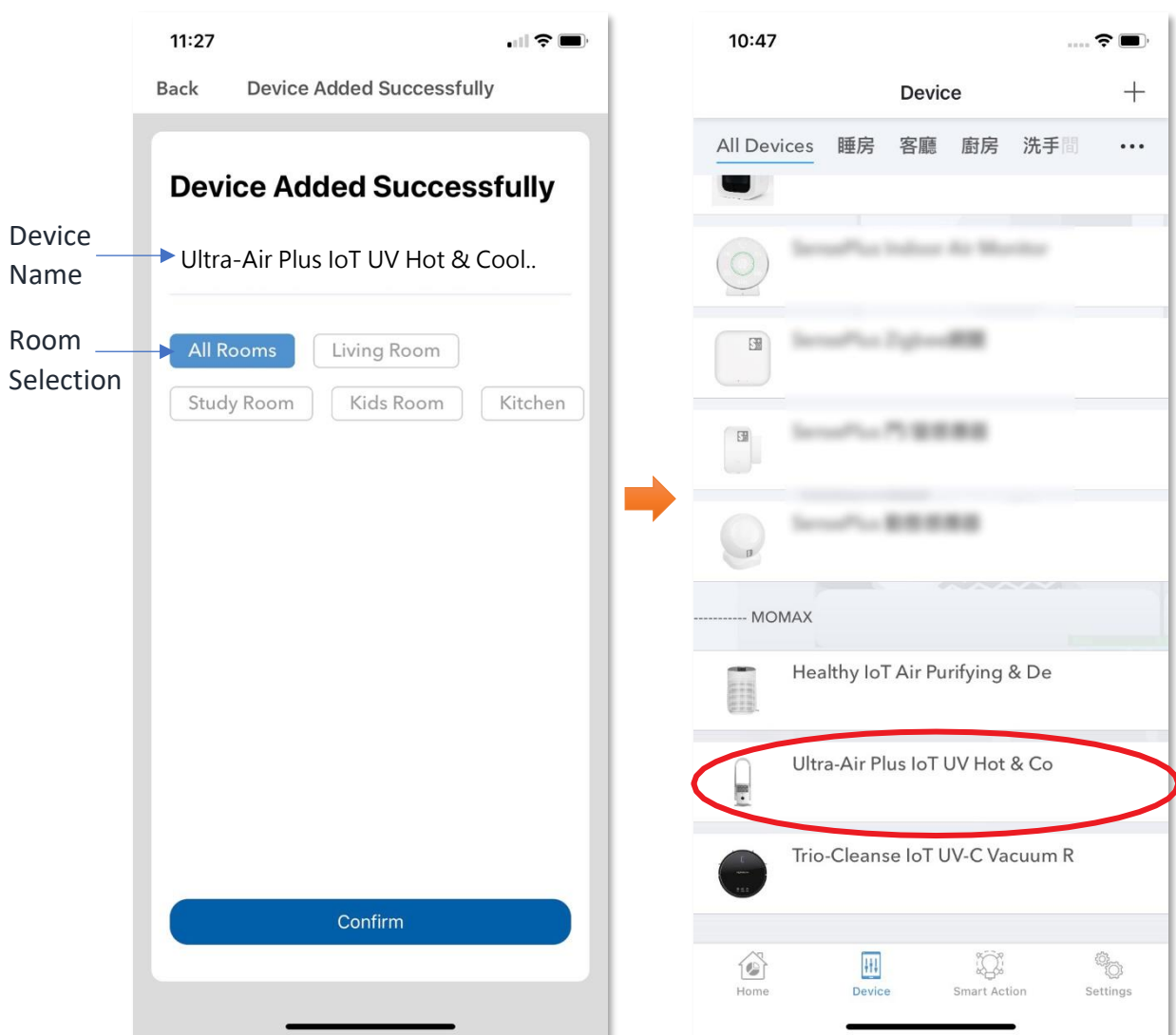


(image 6)



# Add Device

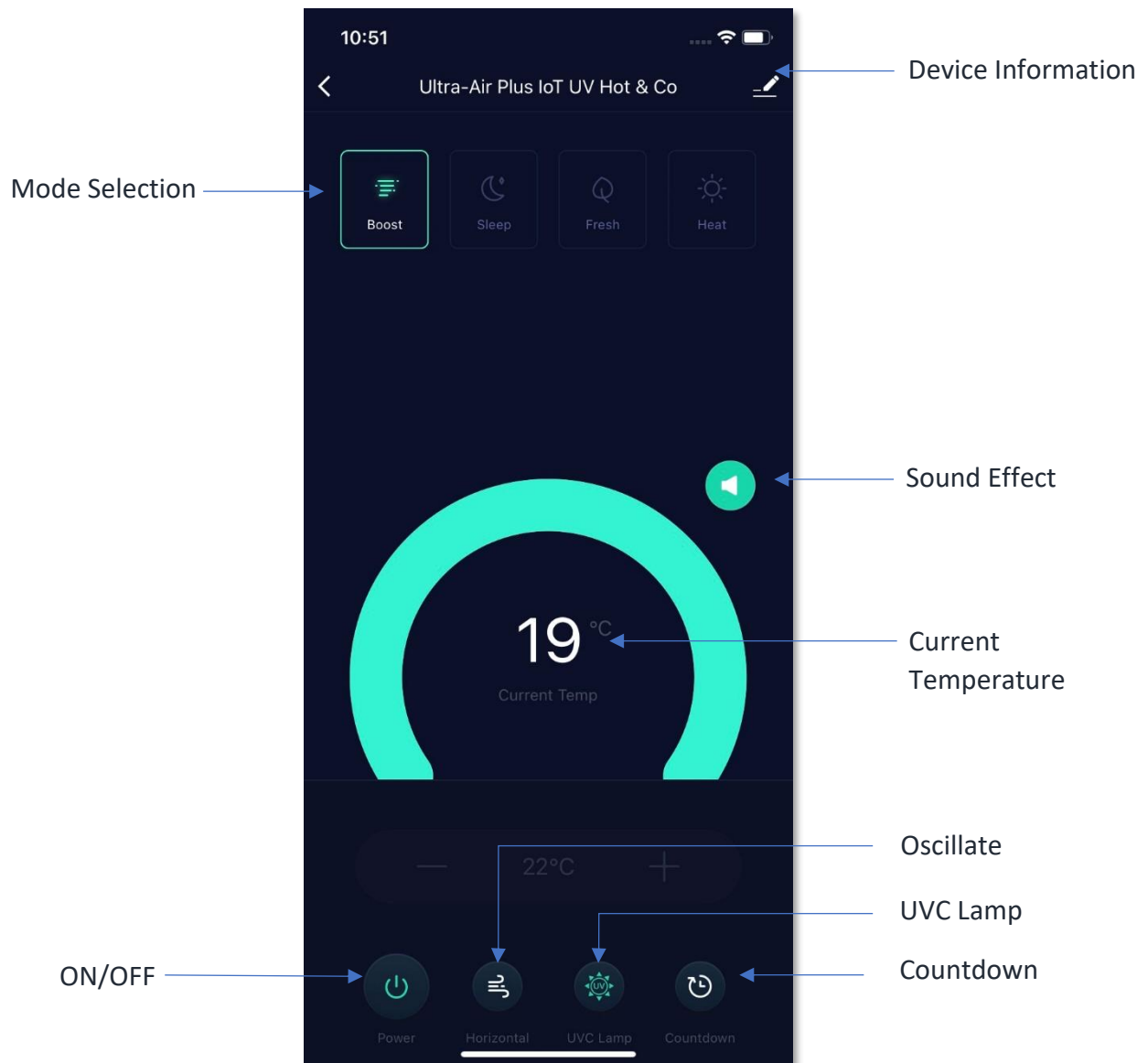
- After device added successfully, you can change the device name and assign it to the located room. (You can also change the device name and room location later in device setting page and room management page.) And you can find the Momax Ultra Air IoT Hot & Cool Purifying Fan in the “Device” page.





# Control Device

- Main Control Panel

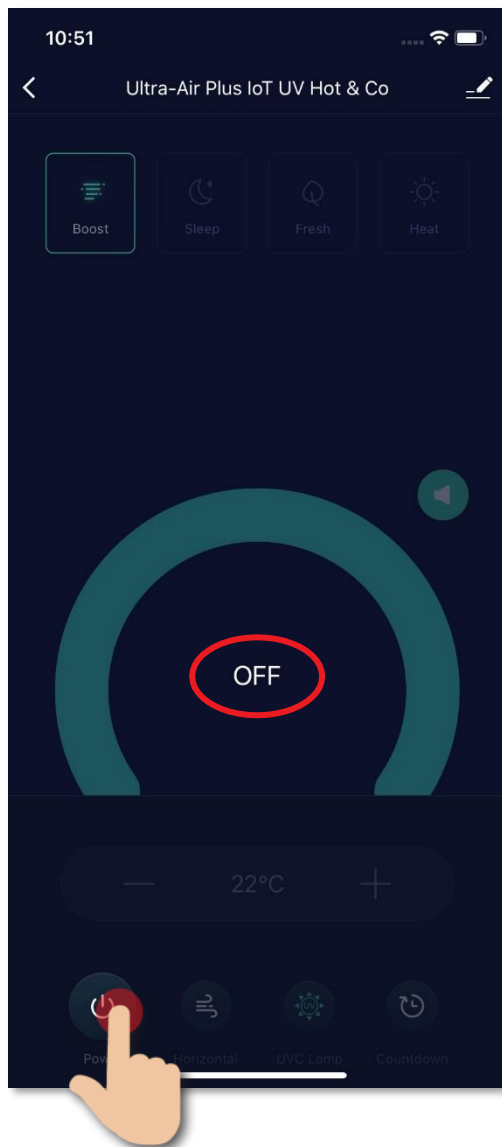


# Control Device

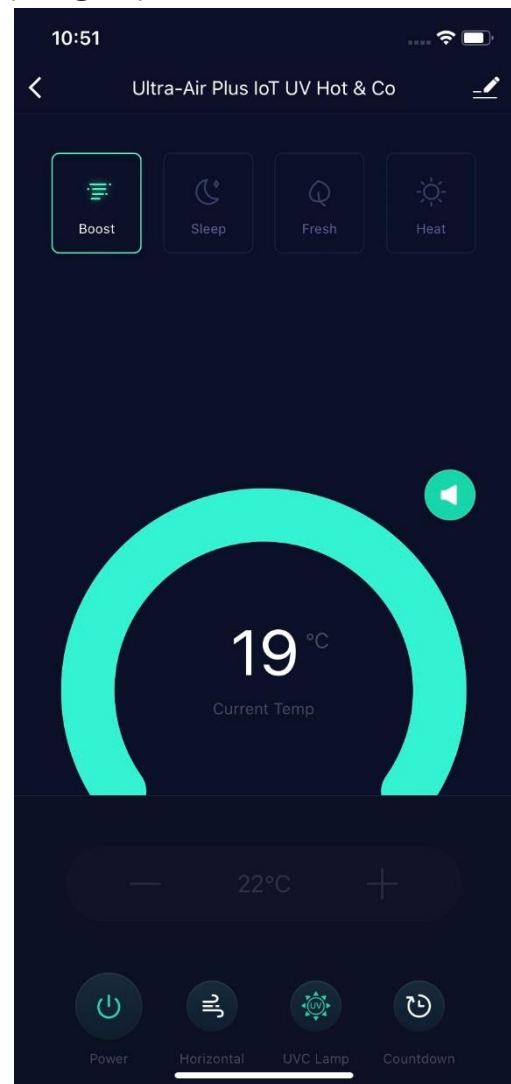
- **Switch On/Off**

You can press the “Switch” key to turn on/off your device remotely. It will show a “OFF” notice on screen after you switched off the device.  
(image 1)

(image 1)



(image 2)

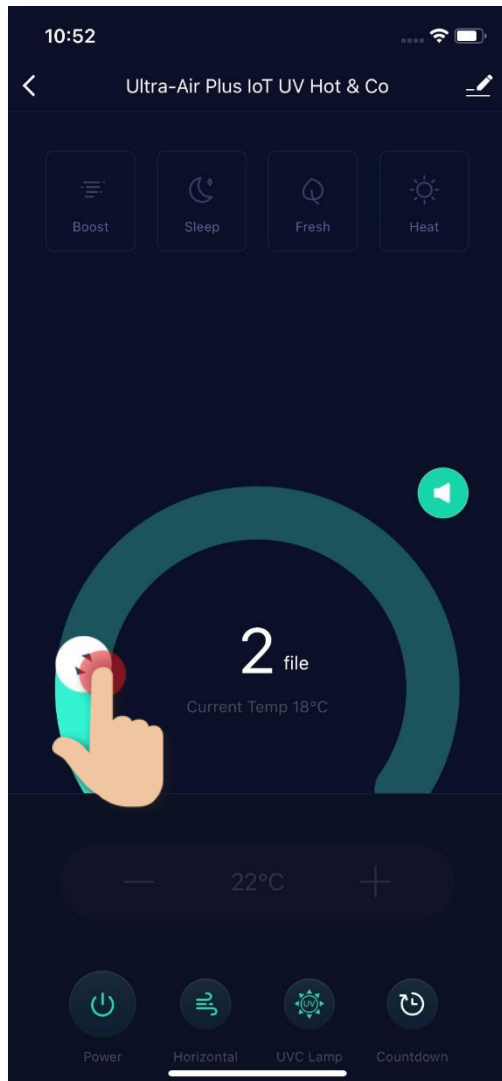


# Control Device

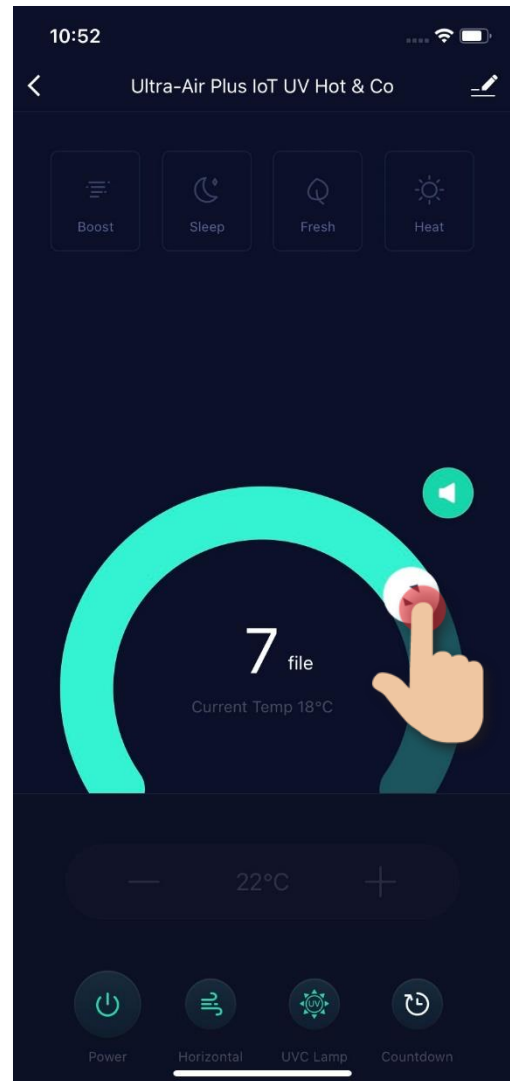
- **Adjust Wind Speed**

You can adjust the wind speed by sliding the control bar. (from level 1 to 9 for Cold, level 1 to 4 for Warm)

(image 1)



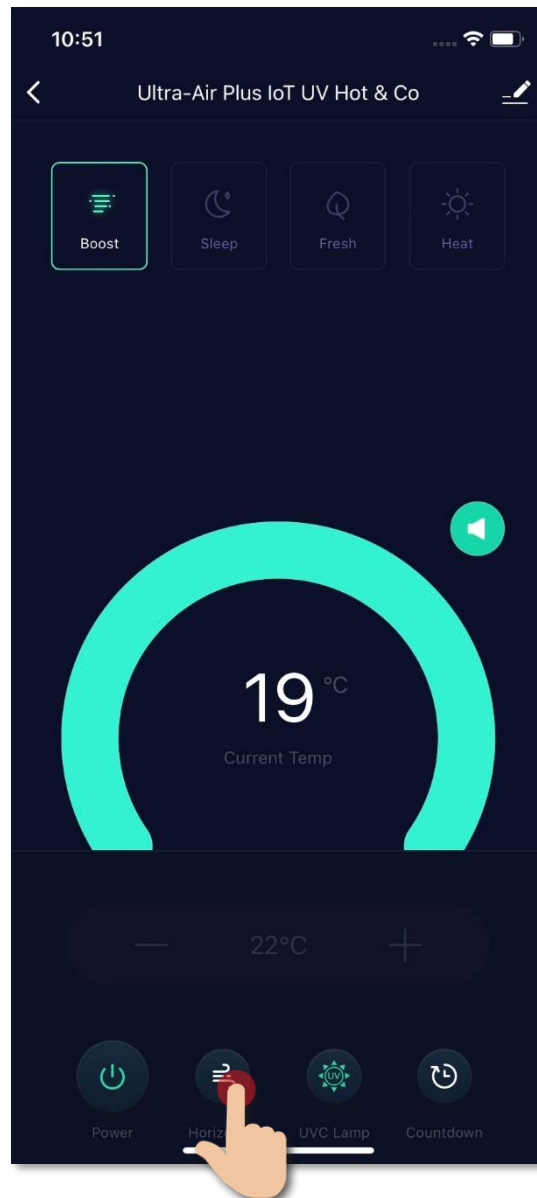
(image 2)



# Control Device

- **Oscillation**

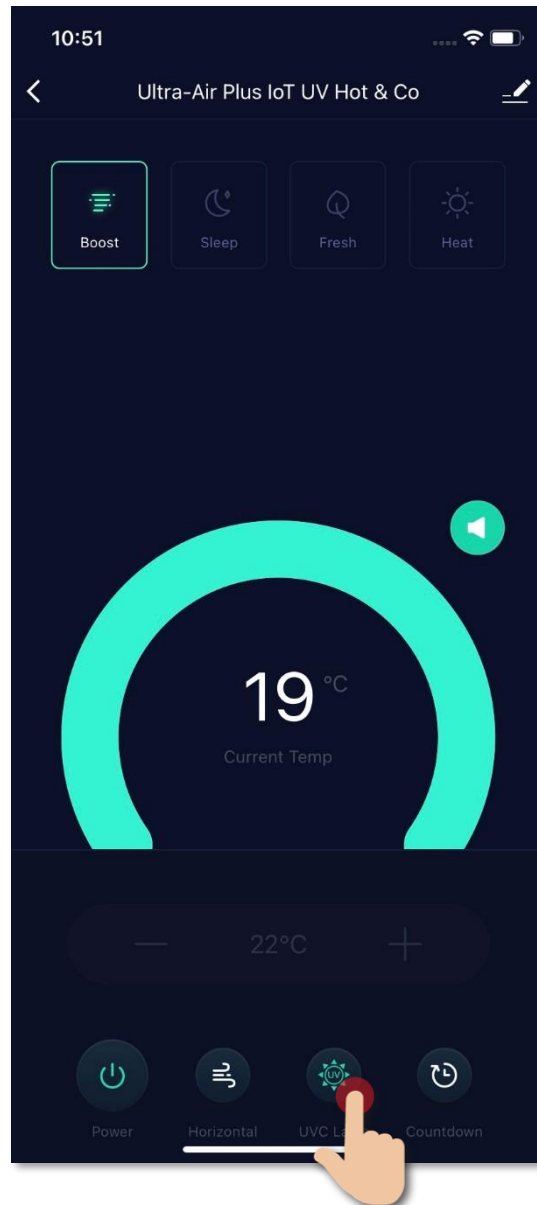
You can enable oscillation by pressing “Horizontal”.



# Control Device

- **UV-C Light**

You can enable/disable UV-C light function by pressing “UVC Lamp”.



# Control Device

- **Auto-off timer function**

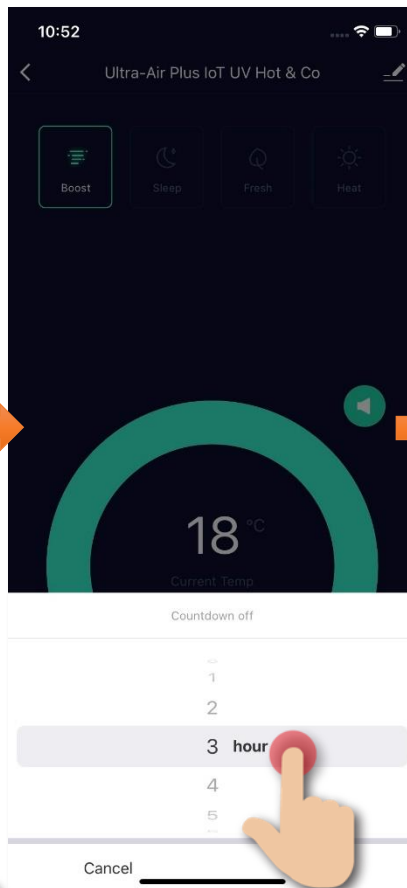
You can set auto-off timer to turn off the device automatically (from 1 – 8 hours):

1. Tap "Countdown" (image 1);
2. Select hours (image 2);
3. Tap "Confirm" (image 3).

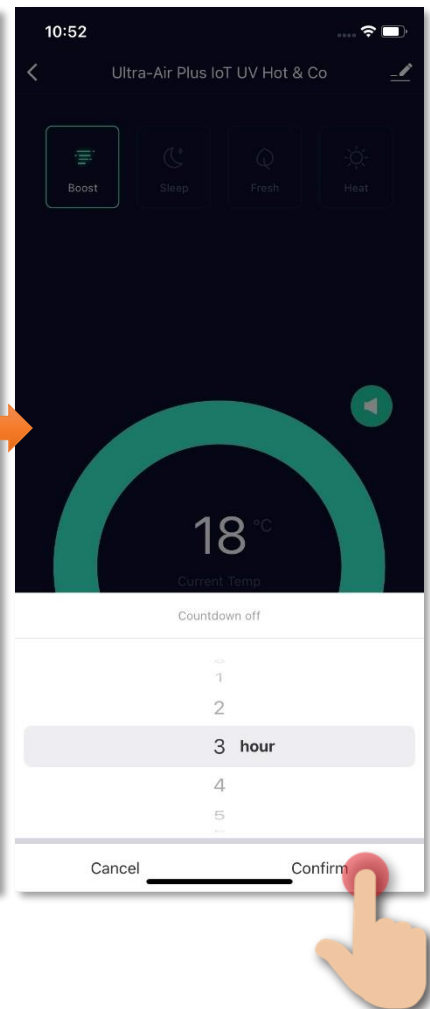
(image 1)



(image 2)



(image 3)



# Control Device

- **Mode Selections**

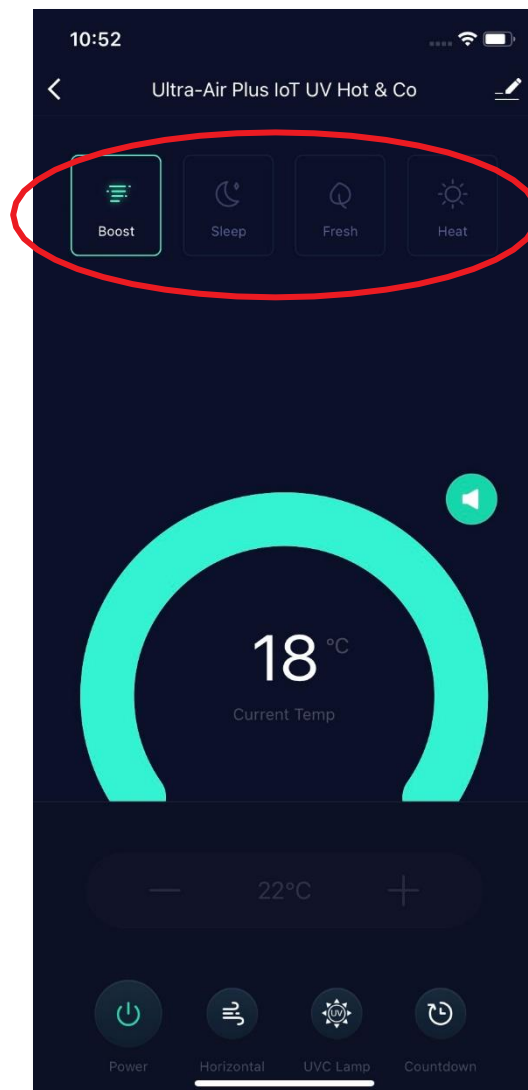
Four shortcut modes are available:

“Boost” mode: Fan speed = 9

“Sleep” mode: Fan speed = 1

“Fresh” mode: Fan speed 3/4/5, and each run for 10 secs.

“Heat” mode: Turn on heater mode



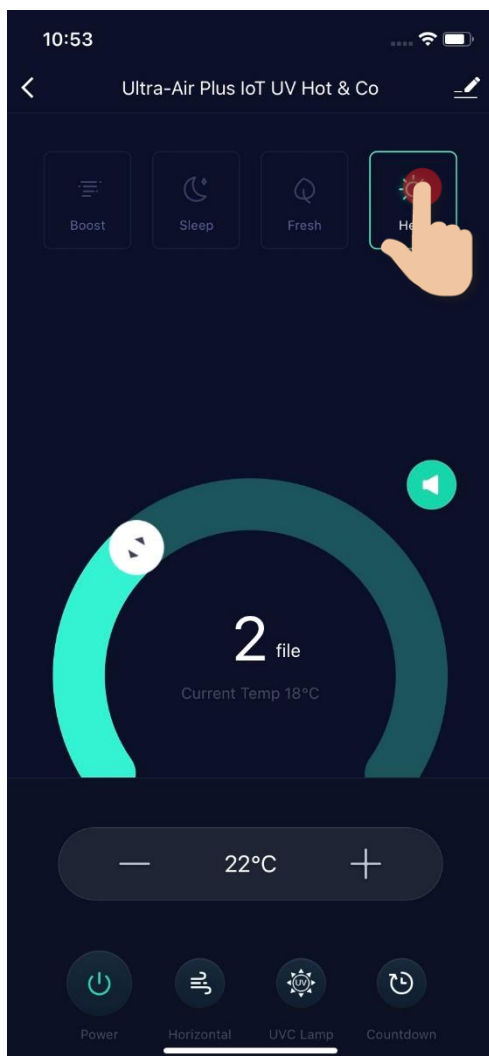
# Control Device

- **Heater Mode**

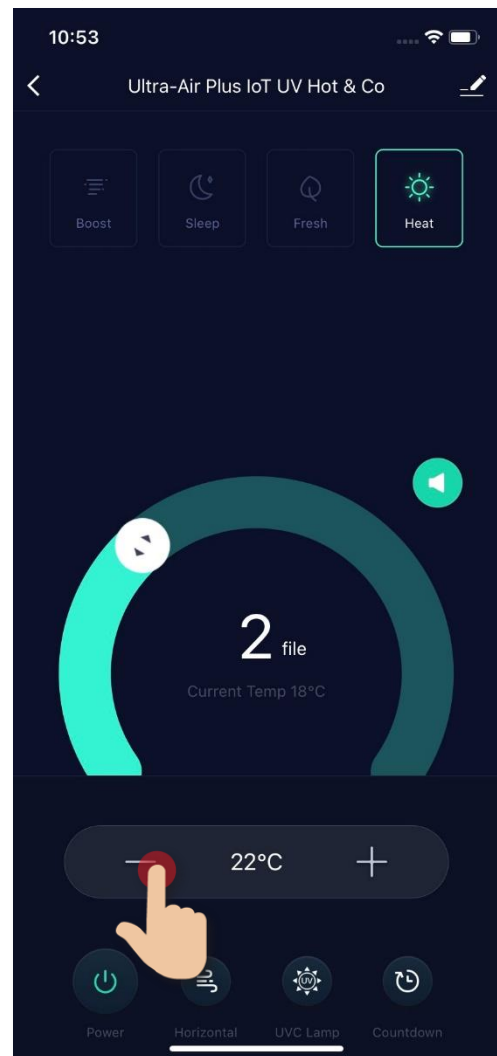
Press “Heat” to turn on heater mode (ranging from 1-30 °C):

- when the environment temperature reaches the heater setting temperature, the heater will stop running to avoid excessive drying of the environment and long-term activation of the heater.
- When the environment temperature is lower than the adjusted heater temperature, the heater will resume to ensure a warm environment. It can maintain the warmth in room and achieve energy saving.

(image 1)



(image 2)





# Control Device

## Scene (Smart Action)

The integration of different smart devices is the beauty of smart home living which provides convenience and many possibilities of creating your preferred control settings. By setting SCENE, you can execute different smart devices at the same time by only one single tap. You can tailor make your unique scene such as movie time scene, welcome/back home scene, reading scene etc.

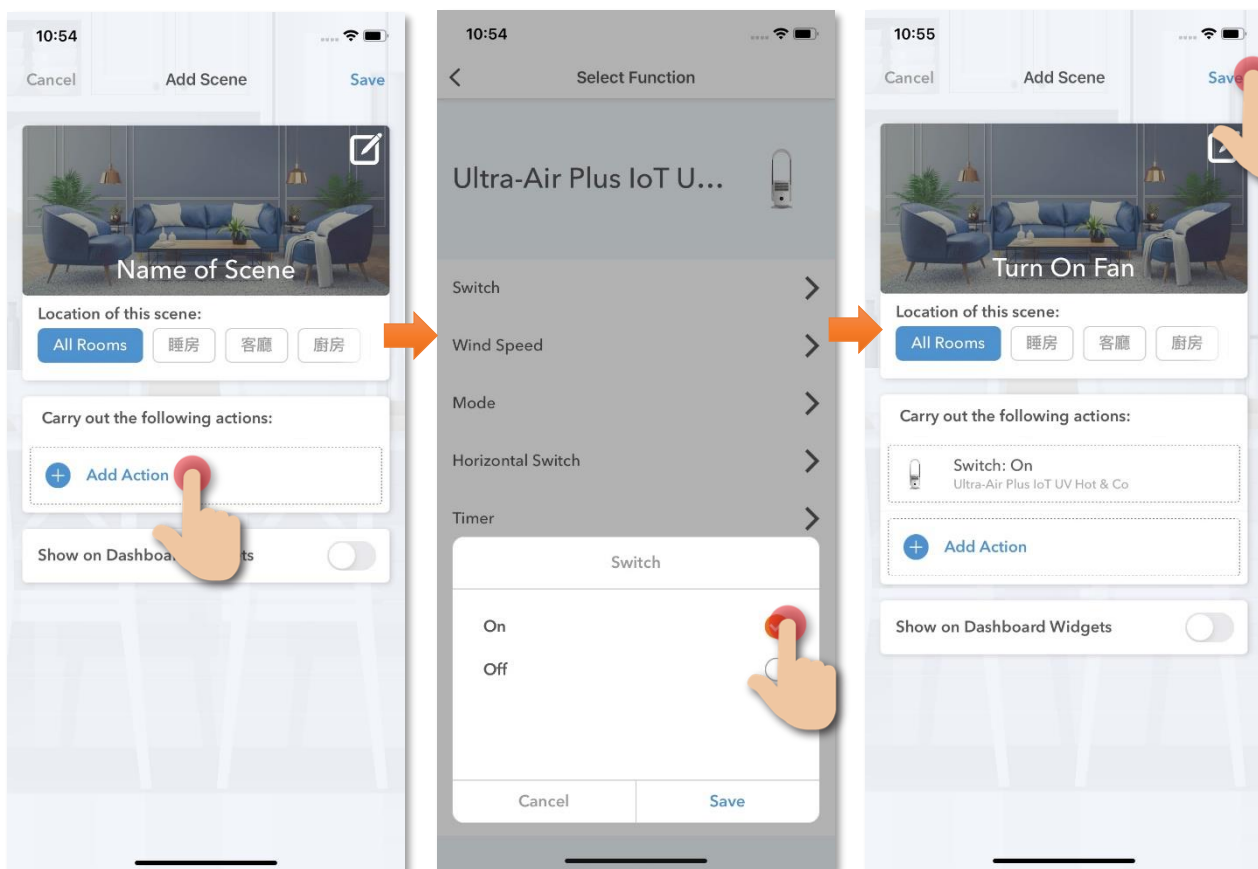
## User Voice Command to Turn On/Off Fan

Instructions below explain how to create a Scene:

1. In "Smart Action" under the page of "Scene", tap "+" to add new Scene, and then tap "Add Action"

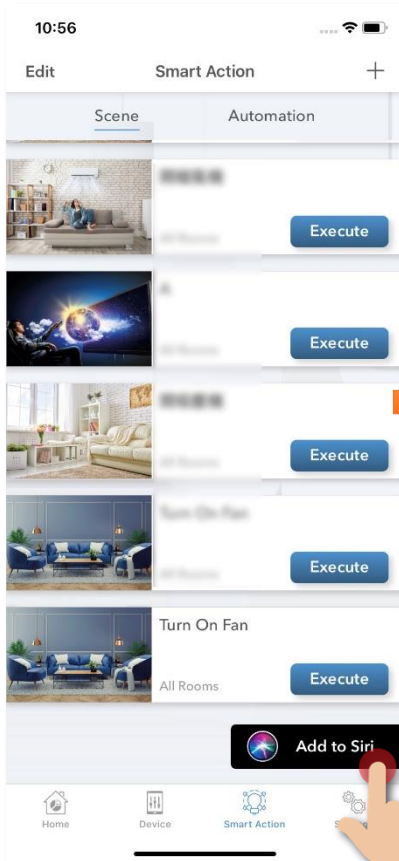
2. Select the related device and tap "Switch", and then select "On". (If turn off the device then select "Off")

3. Tap to enable "Show on Dashboard Widgets", tap "Save" on the top right corner to complete

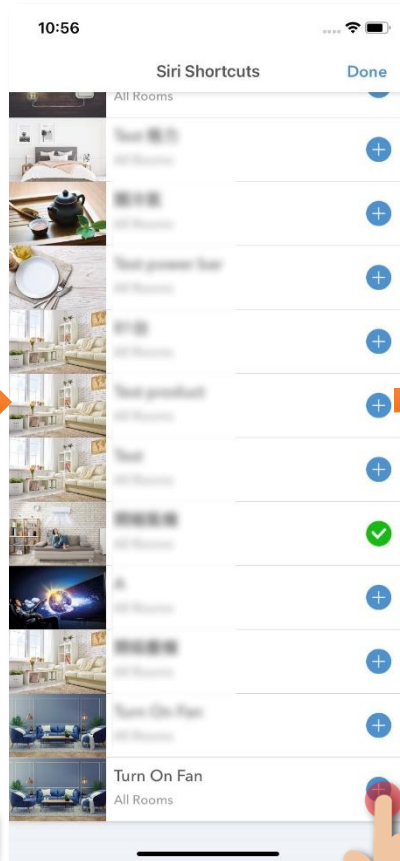


## How to add Siri Command into Scene:

1. In the page of "Scene", tap "Add to Siri"



2. In Siri Shortcuts, select the scene you would like to add Voice command



3. Input the voice command you want and then tap "Add to Siri" to complete



# Automation (Smart Action)

AUTOMATION can carry out device actions automatically by pre-conditions like environment factors or smart device status. You can handover this complex and important daily works to HKBN Home for a convenient and simple living. Automation included the setting of Temperature, Humidity, Weather and Schedule as condition to trigger different control in smart devices. Below is the automation example of Fan and Air-Conditioner (Require infrared Remote Control):

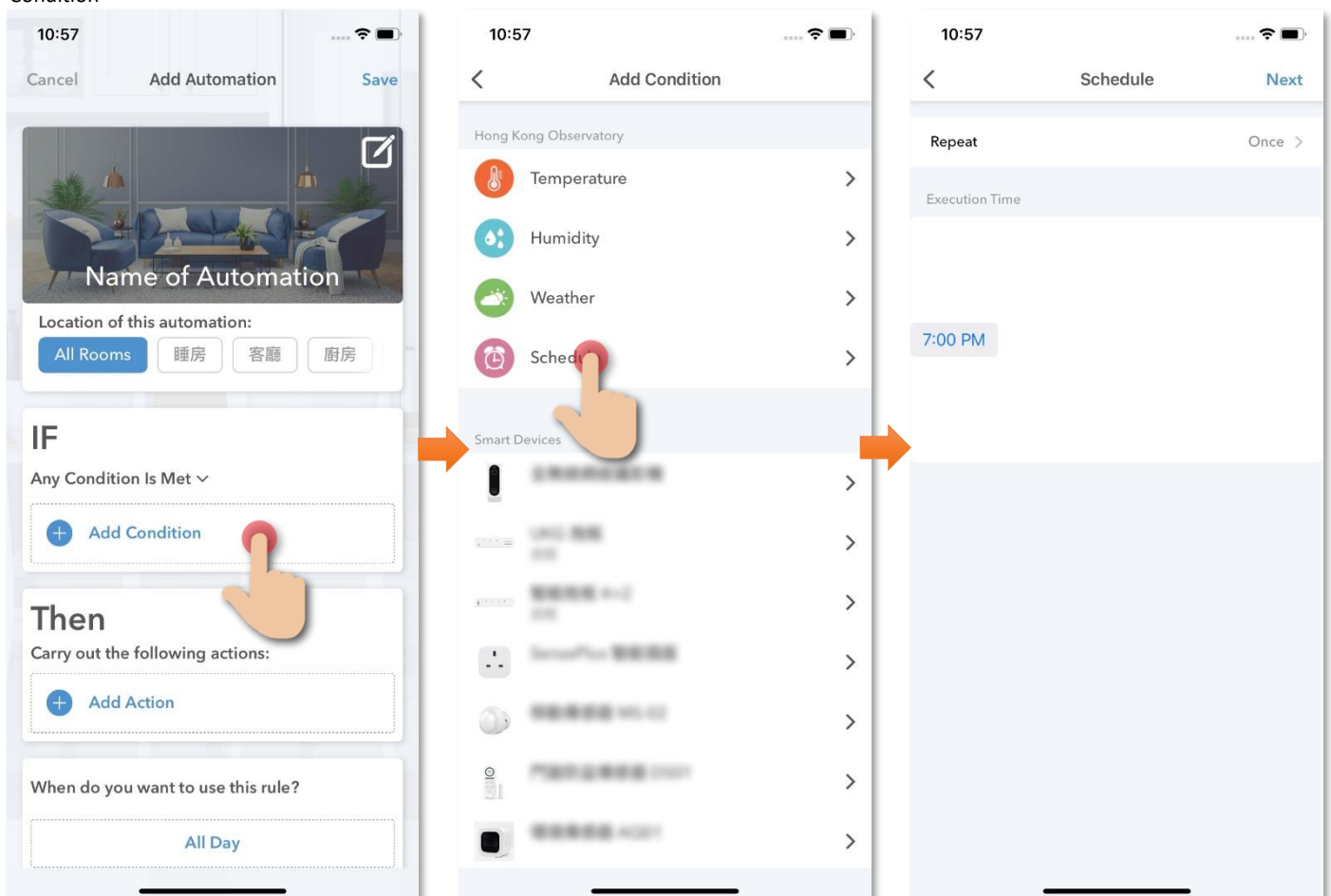
## 7:00pm turn on Heater mode

Instructions below explain how to create an Automation:

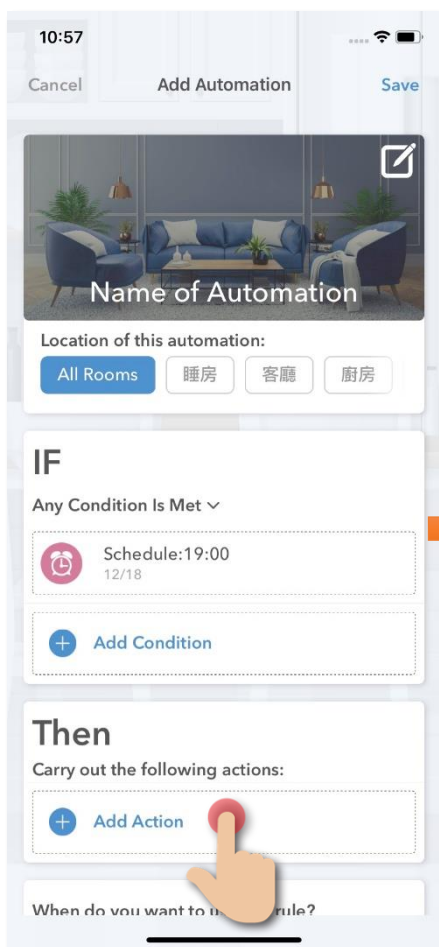
1. In "Smart Action" under the page of "Automation", tap "+" to add new Automation, and then tap "Add Condition"

2. Tap "Schedule"

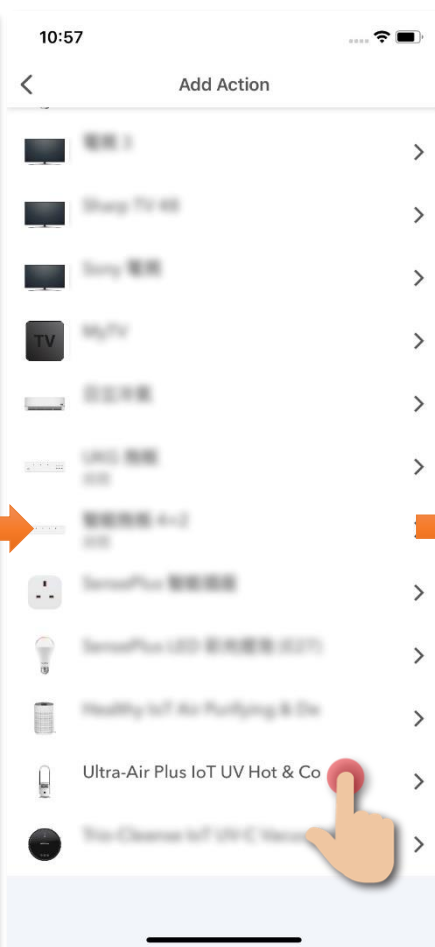
3. Set the time at 7:00pm



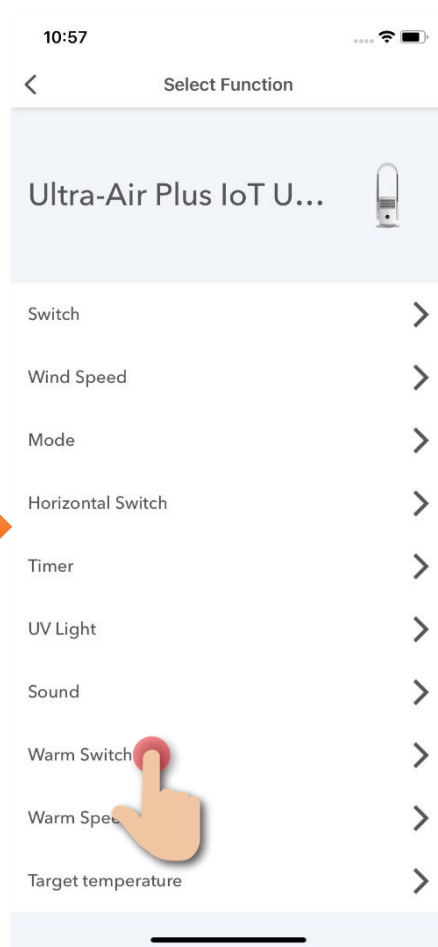
4. Tap "Add Action"



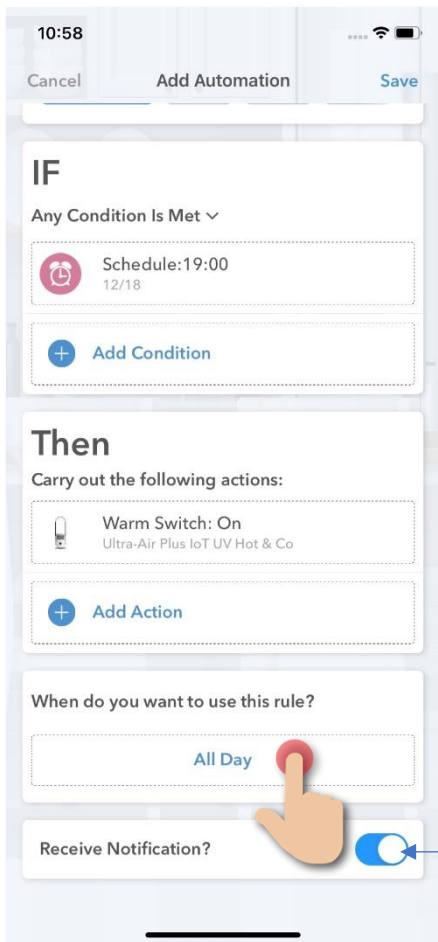
5. Select the related device



6. Select "Warm Switch" and select "On"

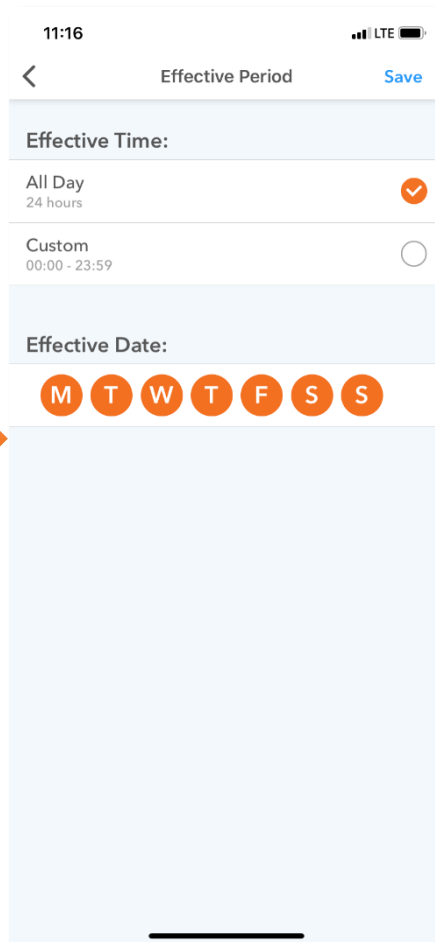


7. Tap “All Day” and then set the effective automation time

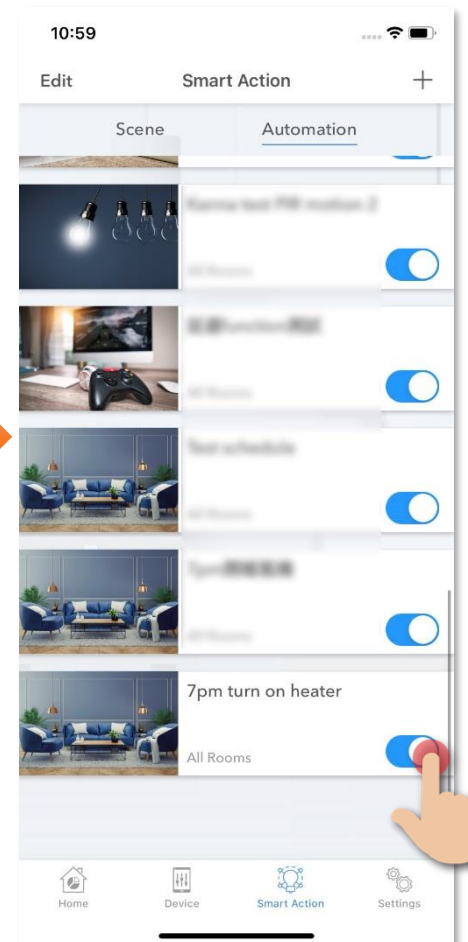


Select to receive execution notification or not

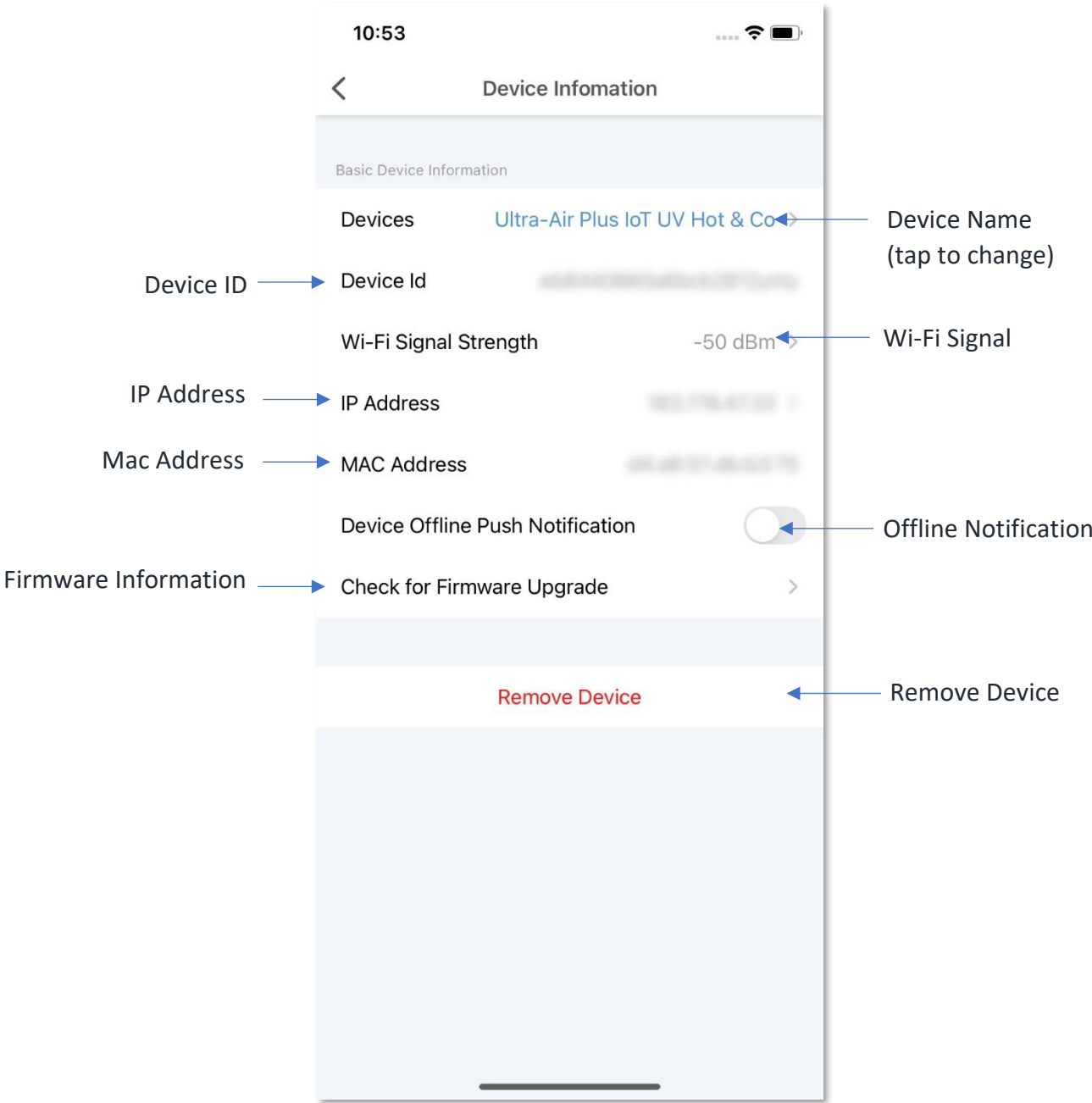
8. Select “All Day” to enable 24 hours or customize the effective period. (If the time is out of the effective period, the automation will not be triggered even if met the conditions)



9. Save to complete. In the page of automation, you can enable or disable automation



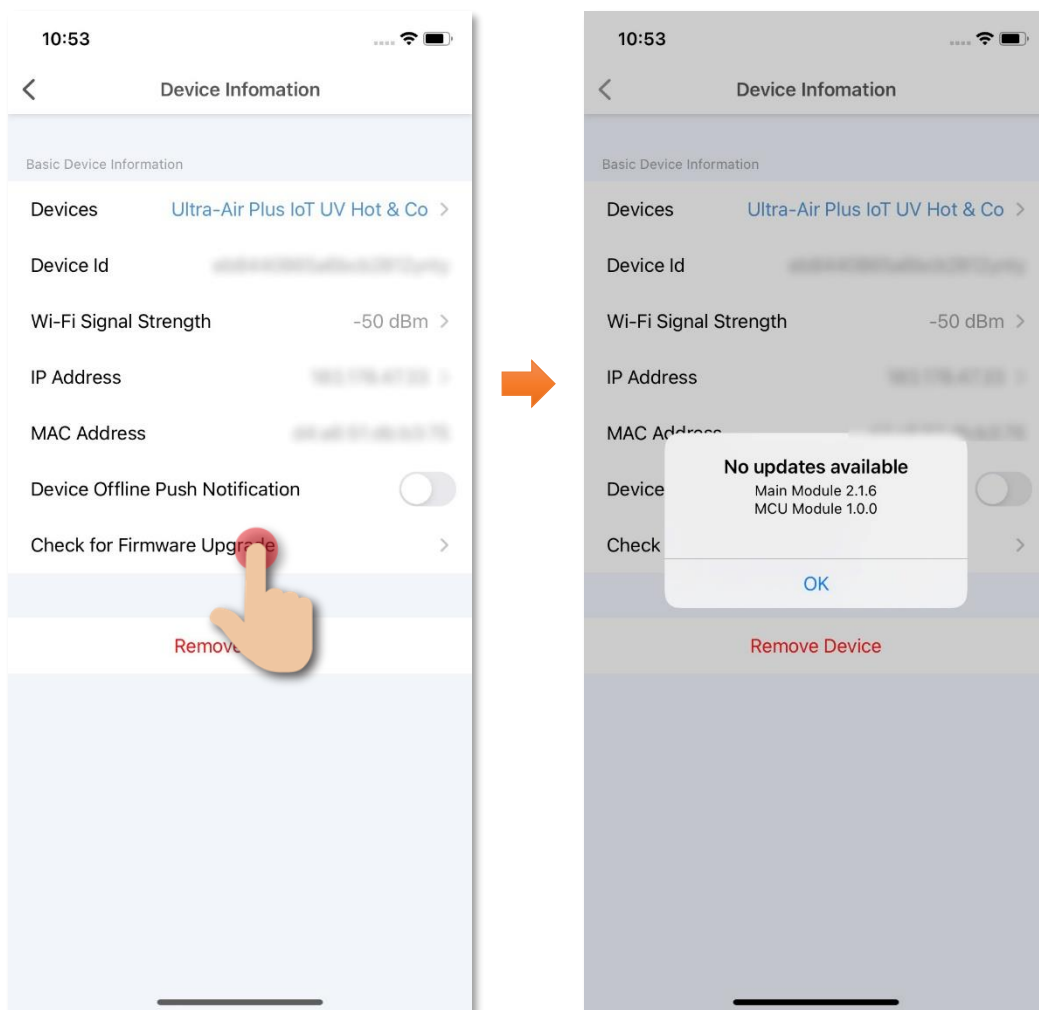
# Device Information



# Device Information

- **Check for Firmware Upgrade**

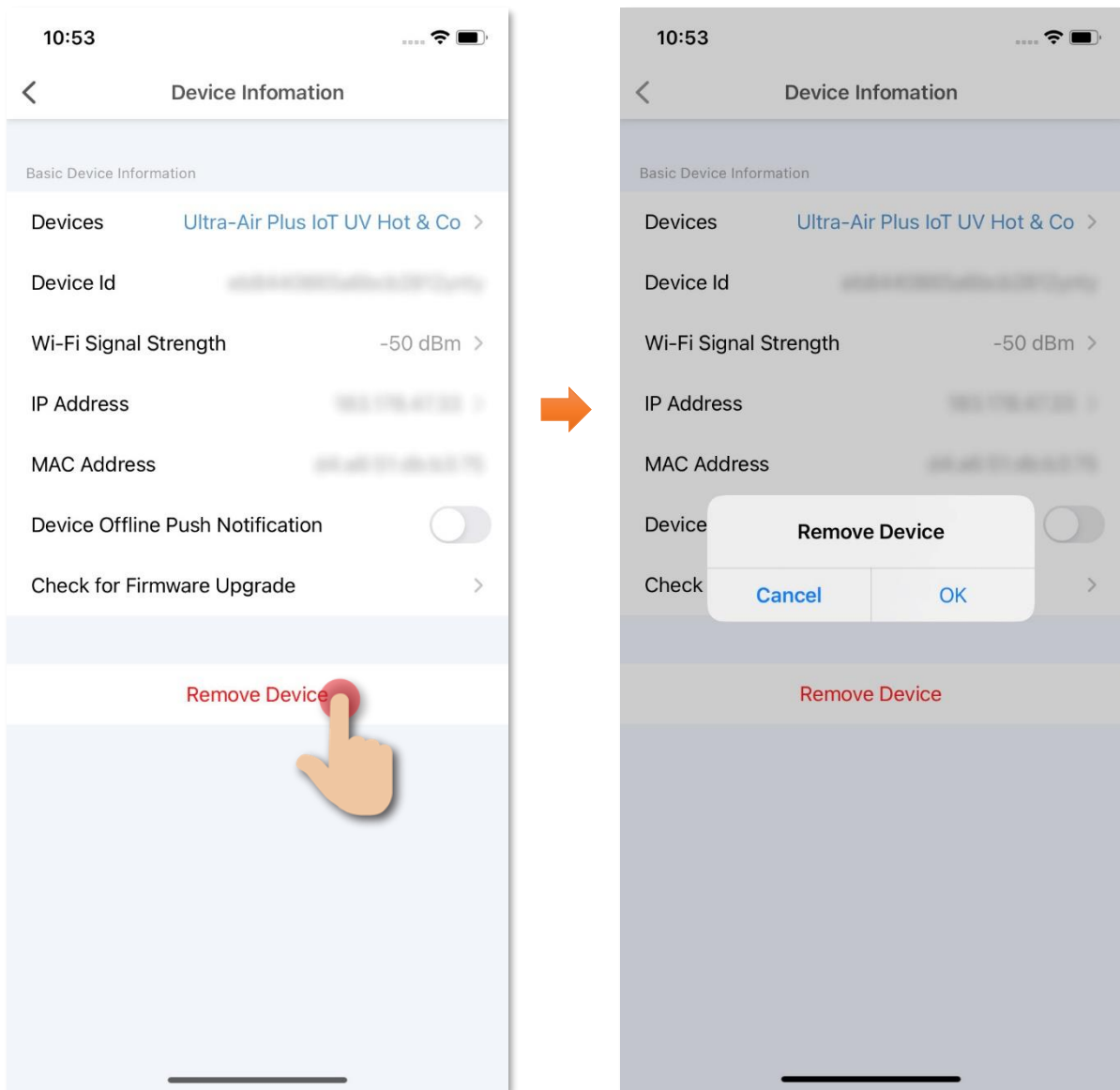
Tap “Check for Firmware Upgrade”, you can see current firmware version and available upgrade version if any. Tap “Upgrade” to start firmware upgrade.



# Device Information

- **Remove Device**

1. In device settings page, tap “Remove Device”.
2. Tap “OK” to confirm and remove device from your account.





# Product Specifications

- Model No.: AP7S
- Operating Voltage /Frequency: 200-240V ~ 50-60Hz
- Rated Voltage / Frequency: 220V±10% ~ 50-60Hz
- Rated Voltage: 2000W
- Heater Voltage: 2000W
- Cool Fan Voltage: 35W
- Filter Type: H13 HEPA
- UV-C Lifecycle: 10000 hours
- Horizontal Oscillation: 80° ± 5°
- Vertical Manual Adjustment: 30°
- Auto-off Timer: 1 - 8 hours
- Battery: Button cell lithium battery CR2025 (1pc)
- Wireless Wi-Fi Frequency: 2.402GHz - 2.480GHz
- Wireless Wi-Fi Distance: 10m
- Cord Length: 1.8m
- Size: 255 x 255 x 700mm
- Weight: 4.6kg

# Product Maintenance and Warranty

For the enquiry of product maintenance and warranty, please contact the product distributor/ manufacturer below:

## **MOMAX Customer Service Centre**

- Service Center: Unit A, 4/F, Cheung Lung Industrial Building, 10 Cheung Yee Street, Lai Chi Kok, Kowloon, Hong Kong
- Tel.: (852) 2402 3186
- E-mail: [info@momax.net](mailto:info@momax.net)
- Opening Hours: (Monday – Friday) 9:00a.m. to 6:00p.m., Closed on Saturday, Sunday and Public Holidays.

Should you have any query, please call our Customer Service Hotline at 128 100.