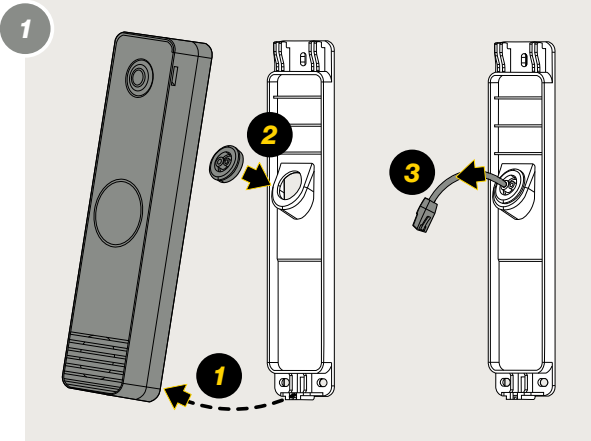


Mounting

Have the necessary cables ready before starting the mounting procedure.



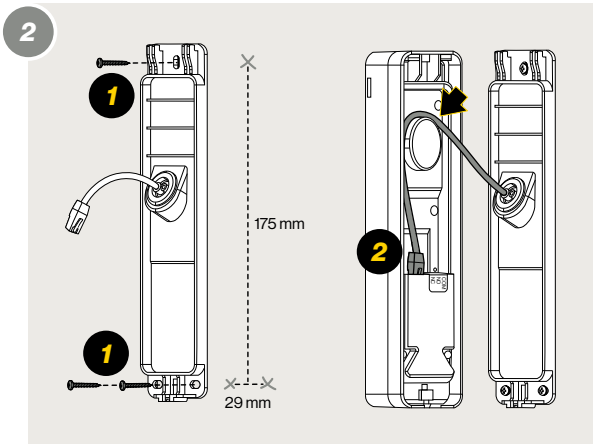
- 1

Detach the **ZSD-1** from the back plate
- 2

Ensure the provided **Grommet** is securely fitted to the cable hole in the back plate, with the flattest side facing inward toward the product.
- !

To achieve the **IP-66** rating, the provided **grommet** must be fixed in the hole
- 3

Pass the **Ethernet cable** through the grommet's cable opening. The cable's outer diameter (OD) should be 4-6mm.



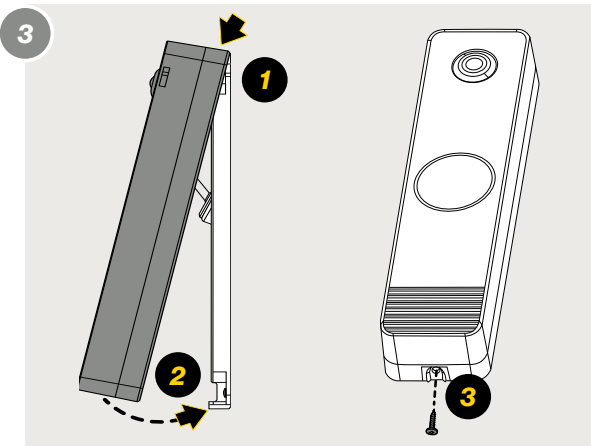
- 1

Securely mount the bracket at the chosen location. Use **3-4mm screws**.
- 2

Plug the Ethernet cable into the **LAN port**.
- ✂

Terminate all other wires according to the planned system setup.
- ➡

Ensure that all wires are properly arranged around the O-shape when mounting the **ZSD-1** onto the back plate.



- 1

Insert the station at the top of the back plate
- 2

Swing the station into place
- 3

Secure the **ZSD-1** to the back plate using the provided screw
- ⚙

Use the provided **M3 x 8mm screw** or a screw of the same dimensions. Avoid using screws with a **countersunk head**.
- ⚙

Apply a maximum of **0.4Nm torque** when tightening the screw

Configuration

When the **ZSD-1** is connected to the network, its IP address is automatically obtained from a DHCP server or an IP address in the range 169.254.xx will be assigned.

To prompt the station to announce its IP address, simply press the **Call Button** located on the station.

The **ZSD-1** is capable of operating in various modes, including **IC-EDGE**, **ICX-AlphaCom**, and **SIP**. To register with **Zenitel Connect Pro** the **ZSD-1** must be in factory default mode. Setup and configuration will be managed through **Zenitel Connect Pro**. Enter the link or scan the QR-code to go to **Zenitel Wiki** for configuration instructions.

Zenitel Wiki: wiki.zenitel.com



CE Zentel hereby declares that this product is in compliance with the essential requirements and other relevant provisions of directive 2014/53/EU and all other applicable EU directive requirements. The complete declaration can be found at www.zenitel.com.

! The **WEEE Directive** does not legislate that **Zenitel**, as a 'producer', shall collect 'end of life' **WEEE**.

This 'end of life' **WEEE** should be recycled appropriately by the owner who should use proper treatment and recycling measures. It should not be disposed to landfill.

Many electrical items that we throw away can be repaired or recycled. Recycling items helps to save our natural finite resources and also reduces the environmental and health risks associated with sending electrical goods to landfill.

Under the **WEEE Regulations**, all new electrical goods should now be marked with the crossed-out wheeled bin symbol shown.

Goods are marked with this symbol to show that they were produced after 13th August 2005, and should be disposed of separately from normal household waste so that they can be recycled.

