

About

This document serves as a mounting and installation guide for the ZSD-1 Zenitel Slim Door Intercom.

For more information and instructions on configuration of the ZSD-1 go to wiki.zenitel.com.

Item Number	Item Name	Description
1008325010	ZSD-1	Zenitel Slim Door Intercom

Safety Instructions

This manual contains important instructions that must be followed. These instructions are intended to ensure that the product is mounted and installed correctly to avoid equipment damage or property loss. Familiarize yourself with the components and follow the instructions step by step.



A note symbol indicates that extra care must be taken. Damage to equipment can occur, or it may not function as intended. Please read all warnings before installing this product.

Installation should only be carried out by qualified personnel with experience in low-voltage electrical systems. Ensure that the installer is familiar with local electrical codes and regulations.

Make sure that the installation complies with all applicable local, regional, and national regulations regarding electrical installations and low-voltage systems.

After installation, conduct a thorough test of the intercom to ensure proper functionality. Test communication, audio quality, and any additional features according to the provided instructions.

Zenitel takes no responsibility for damages caused by improper or inadequate installation.

Mounting considerations

Check the specification of the product for the installation environment.

Choose a suitable location for the intercom system, try to minimize exposure to water sources, direct sunlight, extreme temperatures, and corrosive substances.



The ZSD-1 must be correctly mounted with the camera positioned on top to maintain the IP rating and ensure proper functionality of the mounting hooks.

Mount the intercom at a height and angle that provide optimal comfort for users during interaction. Consider the natural standing or sitting positions of users and adjust the mounting accordingly. It is recommended to mount the station so that the call button is positioned at a height of approximately 120 cm. This is recommended and necessary to be compliant with accessibility regulations.

Installation

Prior to commencing the installation procedure, deactivate the power supply to both the intercom system and its associated devices. This precautionary measure ensures optimal safety throughout the installation process.



Ensure that all cables are properly routed and secured to prevent tripping hazards or damage. Avoid placing cables near heat sources, sharp edges, or areas where they might be pinched or crushed.

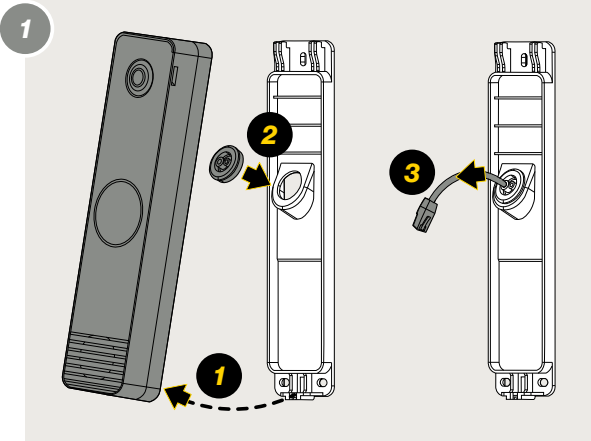
The **ZSD-1** must be powered by either PoE or PoE+. This is done by connecting an Ethernet cable to the **LAN ports** of the station and a PoE switch.



To comply with EMC regulations, the ZSD-1 must be installed with a shielded Ethernet cable with grounding at the switch end.

Mounting

Have the necessary cables ready before starting the mounting procedure.



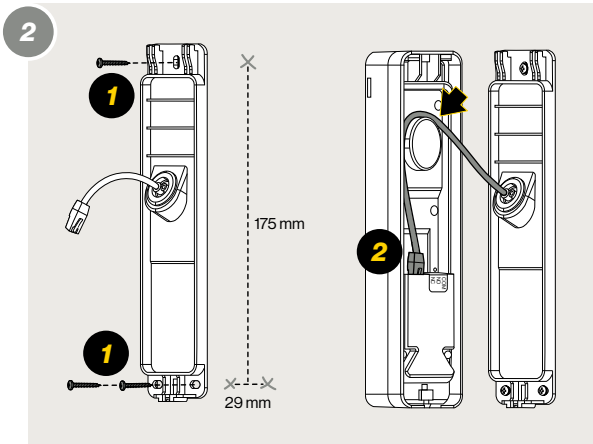
- 1

Detach the **ZSD-1** from the back plate
- 2

Ensure the provided **Grommet** is securely fitted to the cable hole in the back plate, with the flattest side facing inward toward the product.
- !

To achieve the **IP-66** rating, the provided **grommet** must be fixed in the hole
- 3

Pass the **Ethernet cable** through the grommet's cable opening. The cable's outer diameter (OD) should be 4-6mm.



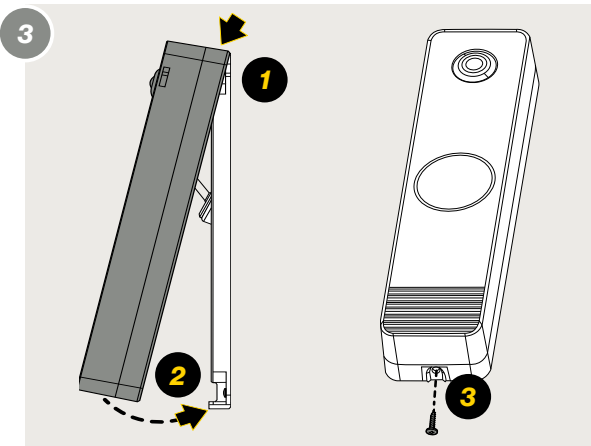
- 1

Securely mount the bracket at the chosen location. Use **3-4mm** screws.
- 2

Plug the Ethernet cable into the **LAN port**.
- ✂

Terminate all other wires according to the planned system setup.
- ➡

Ensure that all wires are properly arranged around the O-shape when mounting the **ZSD-1** onto the back plate.



- 1

Insert the station at the top of the back plate
- 2

Swing the station into place
- 3

Secure the **ZSD-1** to the back plate using the provided screw
- ⚙

Use the provided **M3 x 8mm screw** or a screw of the same dimensions. Avoid using screws with a **countersunk head**.
- ⚙

Apply a maximum of **0.4Nm torque** when tightening the screw

Configuration

When the **ZSD-1** is connected to the network, its IP address is automatically obtained from a DHCP server or an IP address in the range 169.254.xx will be assigned.

To prompt the station to announce its IP address, simply press the **Call Button** located on the station.

The **ZSD-1** is capable of operating in various modes, including **IC-EDGE**, **ICX-AlphaCom**, and **SIP**. To register with **Zenitel Connect Pro** the **ZSD-1** must be in factory default mode. Setup and configuration will be managed through **Zenitel Connect Pro**. Enter the link or scan the QR-code to go to **Zenitel Wiki** for configuration instructions.

Zenitel Wiki: wiki.zenitel.com



CE Zentel hereby declares that this product is in compliance with the essential requirements and other relevant provisions of directive 2014/53/EU and all other applicable EU directive requirements. The complete declaration can be found at www.zenitel.com.

! The **WEEE Directive** does not legislate that **Zenitel**, as a 'producer', shall collect 'end of life' **WEEE**.

This 'end of life' **WEEE** should be recycled appropriately by the owner who should use proper treatment and recycling measures. It should not be disposed to landfill.

Many electrical items that we throw away can be repaired or recycled. Recycling items helps to save our natural finite resources and also reduces the environmental and health risks associated with sending electrical goods to landfill.

Under the **WEEE Regulations**, all new electrical goods should now be marked with the crossed-out wheeled bin symbol shown.

Goods are marked with this symbol to show that they were produced after 13th August 2005, and should be disposed of separately from normal household waste so that they can be recycled.