

# **VEVOR®**

**TOUGH TOOLS, HALF PRICE**

Technical Support and E-Warranty Certificate <https://www.vevor.com/support>

## **COFFEE GRINDER USER MANUAL**

**MODEL: BD-CG001**

We continue to be committed to provide you tools with competitive price.

"Save Half", "Half Price" or any other similar expressions used by us only represents an estimate of savings you might benefit from buying certain tools with us compared to the major top brands and does not necessarily mean to cover all categories of tools offered by us. You are kindly reminded to verify carefully when you are placing an order with us if you are actually saving half in comparison with the top major brands.

# VEVOR®

*Coffee Grinder*  
**BD-CG001**

**BD-CG001**



## NEED HELP? CONTACT US!




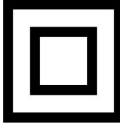


Have product questions? Need technical support? Please feel free to contact us:

 [\*\*CustomerService@vevor.com\*\*](mailto:CustomerService@vevor.com)

This is the original instruction, please read all manual instructions carefully before operating. VEVOR reserves a clear interpretation of our user manual. The appearance of the product shall be subject to the product you received. Please forgive us that we won't inform you again if there are any technology or software updates on our product.

## IMPORTANT SAFEGUARDS

**When using electrical appliances, basic safety precautions should always be followed:**

	Warning - To reduce the risk of injury, user must read instructions manual carefully.
	This symbol, placed before a safety comment, indicates a kind of precaution, warning, or danger. Ignoring this warning may lead to an accident. To reduce the risk of injury, fire, or electrocution, please always follow the recommendation shown below.
	Alternating current
	This product is of protection class II. That means it is equipped with enhanced or double insulation.
	FOR HOUSEHOLD USE ONLY
	<p><b>Correct Disposal of this product:</b></p> <p>This marking indicates that this product should not be disposed with other household wastes throughout the EU. To prevent possible harm to the environment or human health from uncontrolled waste disposal, recycle it responsibly to promote the sustainable reuse of material resources. To return your used device, please use the return and collection systems or contact the retailer where the product was purchased. They can take this product for environmental safe recycling.</p>



**WARNING:** Read all safety warnings, instructions, illustrations and specifications provided with this electrical appliances. Failure to follow all instructions listed below may result in electric shock, fire and/or serious injury.

**Save all warnings and instructions for future reference.**



## **WARNING:**

1. Read all instructions.
2. To protect against fire, electric shock and injury to persons, do not immerse cord, plugs or machine in water or other liquid.
3. Close supervision is necessary when any appliance is used by or near children (Note: This appliance can be used by children aged from 8 years and above and persons with reduced physical, sensory or mental capabilities or lack of experience and knowledge if they have been given supervision or instruction concerning use of the appliance in a safe way and understand the hazards involved. Children shall not play with the appliance. Cleaning and user maintenance shall not be made by children without supervision)..
4. Unplug from outlet when not in use, before putting on or taking off parts, and before cleaning. To unplug, grasp plug and pull from electrical outlet. Never pull cord.
5. Avoid contact with moving parts
6. To reduce the risk of severe injury to persons or damage to the appliance, keep hands and utensils out of the coffee bean box while grinding, and when the appliance is plugged in.
7. Do not operate the grinder with a damaged cord or plug or after the appliance malfunctions, or is dropped or damaged in any manner. In this case, return the appliance to the approved Service Center for examination, repair, or electrical or mechanical adjustment.
8. The use of attachments not recommended or sold by may cause fire, electric shock or injuries.
9. Do not use outdoors.
10. Do not let cord hang over edge of table or counter or touch hot surfaces, including the stove.
11. Check Coffee bean box for presence of foreign objects before using.
12. Always operate the burr grinder with the lid securely in place.
13. Do not place on or near a hot gas or electric burner or in a heated oven.
14. This product has been designed for household use only. Any commercial use, inappropriate use or failure to comply with the instructions will void the manufacturer's Warranty.
15. This appliance is only used for roasted coffee beans grinding. Do not use the appliance for other intended use (such as hard seeds, spice, nuts, etc.);,

16. Every appliance is inspected strictly during mass production, and be tested with coffee beans for grinding, which may cause slight traces of use or residual coffee grounds;.
17. All machines are subject to stringent quality control. Practical tests using machines taken at random are conducted and this may explain any slight marks or coffee residue showing prior to use.
- 18.Type Y attachment: If the supply cord is damaged, it must be replaced by the manufacturer, its service agent or similarly qualified persons in order to avoid a hazard.
- 19.Avoid contacting moving parts.Do not attempt to defeat any safety interlock mechanisms.

## **SAVE THESE INSTRUCTIONS**

### **CAUTION**

This appliance is for household use only. Any servicing other than cleaning and user maintenance should be performed by the nearest authorized Service Center.

- Do not immerse appliance in water.
- To reduce the risk of fire or electric shock, do not dismantle the appliance. Repair should be done by an authorized Service Center only.

### **SHORT CORD INSTRUCTIONS**

#### **Regarding your Cord Set:**

- A. A short power-supply cord is provided to reduce the risks resulting from becoming entangled in or tripping over a longer cord.
- B. Extension cords should be used with caution.
- C. If an extension cord is used, (1) the marked electrical rating of the extension cord should be at least as great as the electrical rating of the appliance, (2) if the appliance is of the grounded type, the extension cord should be of a grounded type and (3) the longer cord should be arranged so that it will not drape over the counter top or table top where it can be pulled on by children or tripped over.

### **POLARIZED PLUG**

This appliance has a polarized plug (one blade is wider than the other), to reduce the risk of electrical shock. This plug will fit into a polarized outlet only one way.

If the plug does not fit fully into the outlet, reverse the plug. If it still does not fit, contact a qualified electrician. Do not modify the plug in any way.

## ABOUT GRINDING COFFEE

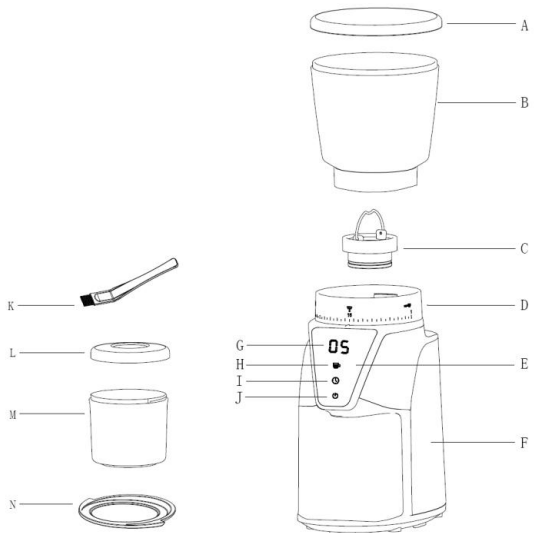
The proper grind gives the most flavorful cup of coffee. The grind size and amount depend on the method by which the coffee is to be brewed. Generally, the finer the grind the more quickly the coffee should be prepared. That is why coffee ground for an espresso machine extraction is much finer than coffee to be brewed in a drip system.

Coffee that is ground too fine for a particular brewing process - (For example, fine espresso grind used in a filter drip coffee machine) will result in over-extraction and bitter, pungent tasting coffee. Conversely, coffee that is too coarse for a particular brew method will result in under-extraction and weak, watery coffee. If the correct grind is used, adding more coffee simply makes a brew stronger without making it bitter.

In addition to providing a range of grind settings, coffee grinders provide a consistent grind. This is important to ensure the extraction is consistent across all of the ground coffee particles.

## DESCRIPTION

- A. Coffee Bean box lid
- B. Coffee Bean box
- C. Removable upper conical burr
- D. Coarseness adjustment ring
- E. Control panel
- F. Stainless steel plate
- G. LED display
- H. Cup selection button
- I. Timer button
- J. START/STOP button
- K. Brush
- L. Coffee powder lid
- M. Coffee powder jar
- N. Rubber mat



### Caution:


Power saving mode: If without operation over 3 minutes, the unit enters Power saving mode automatically, press start/stop button it restarts.

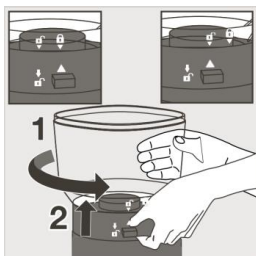
## BEFORE FIRST USE

Before using the coffee grinder, wipe the housing and Coffee bean box with a clean damp cloth. Wash the coffee powder jar and the coffee powder jar lid in hot soapy water, then rinse and dry.

## SET THE COFFEE BEAN BOX

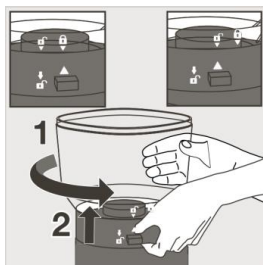
### How to remove the Coffee bean box

1. Make sure the coffee grinder is unplugged.
2. Press the Coffee bean box release lever located at the opposite  of the grinding size



markings.

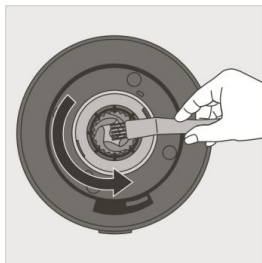
3. Turn the Coffee bean box counter-clockwise until the unlock icon  aligns with the





arrow▲ and lift it up.

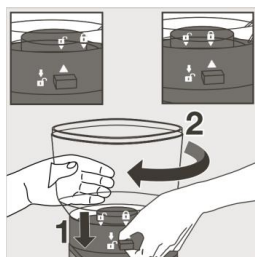
### How to assemble the Coffee bean box


1. Make sure the top part of the conical burr is clear. If not, pls use the brush provided to

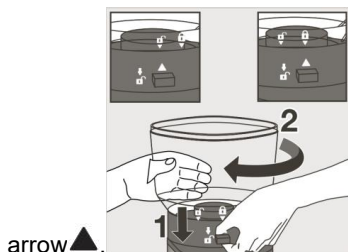


clean the top part of the burr.

2. Align the unlock icon  on the base with the arrow  on the Coffee bean box.



3. Turn the Coffee bean box clockwise until the lock icon  aligns with the



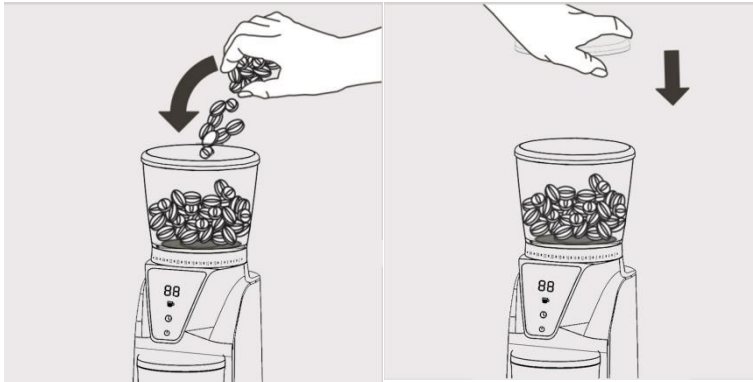
arrow ,

**NOTE:** If the coffee bean box is not assembled properly, the coffee grinder won't work.

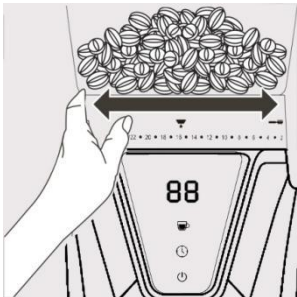
## SET COFFEE GRIND SIZE

1. Put the coffee powder jar at the correct position.
2. Fill coffee beans into coffee bean box, close the lid.











3. The coffee grinder has 51 grind size options. To adjust the grind size, rotate the coffee bean box and adjust from fine to coarse according to the type of coffee you want.



See chart below:

**GRIND SIZE SETTING RECOMMENDATIONS**

	Espresso	Mocca	Siphon	Filter Coffee	Pour Over	French Press
Coffee Type						
Grind Size	Fine	Middle Fine	Middle	Middle	Middle Coarse	Coarse

Grind Setting	1-7	8-15	16-26	27-34	35-43	44-51
------------------	-----	------	-------	-------	-------	-------

## OPERATION INSTRUCTIONS

### 1. Control panel instruction



: Display the number of cups or time: 01, 02, 03.....14 or Countdown



: Select to set the number of cups



: Select maximum running time



: Start/Stop button.

## **2.Instructions**

**1. Turn on the power. After the power is turned on, the buzzer will sound once, and the LED will display "01", which means entering the cup count mode to grind a cup of coffee grinding powder**

### **2. Cups button**

When pressing the "cup count button", the display screen will display "01".

The default setting range is 1-14 cups. Each time you press the button, 1 cup will be added, and 01, 02, 03, 04... 14 will be displayed. After selecting the number of cups, press the "Start button" to start grinding beans.

If you want to stop grinding, press the start/stop button again.

### **3. Time button**

When "time key" is selected, the display screen will display "56".

Press the "Start button" to start grinding beans, and the screen displays the countdown of 56,55; If you want to stop grinding, press the "Start/Stop button" again.

The maximum grinding time is 56 seconds.

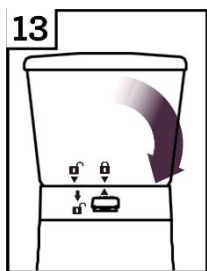
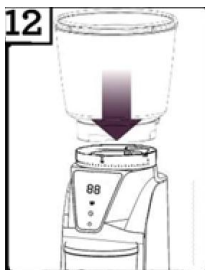
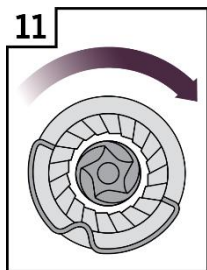
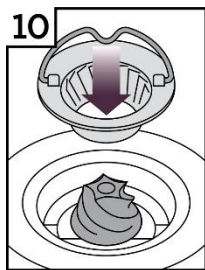
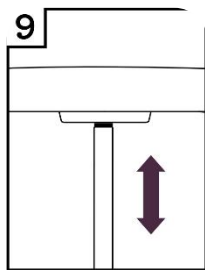
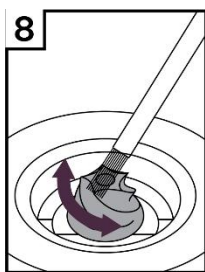
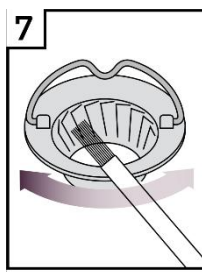
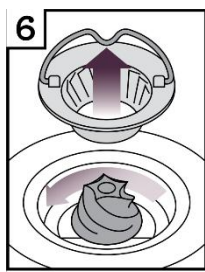
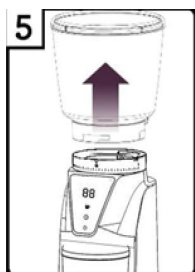
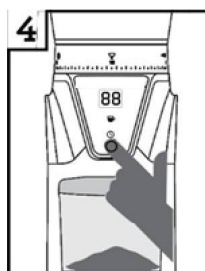
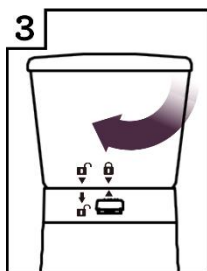
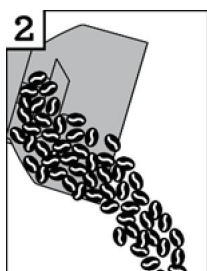
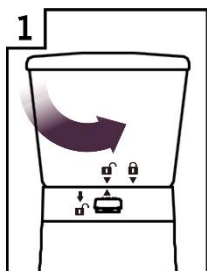
### **4. Start/stop button**

After selecting the "cup count button" or "time button", press the "start/stop button" to start working.

If you need to stop halfway, press the "Start/Stop button" to stop working.

## CLEANING CONICAL BURRS

Regular cleaning helps the burrs achieve consistent grinding results which is especially important.



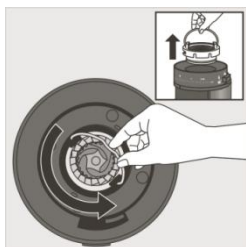
## IMPORTANT!

For your appliance to run correctly, make certain that:

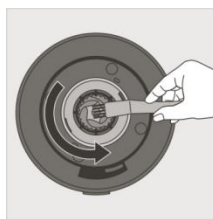
- The lid to the coffee bean box is correctly closed.
- The coffee powder jar and its lid are correctly placed in the body of the appliance.
- This appliance is equipped with an overheat protective device. If the appliance overheats, it will switch off automatically. In this case let it cool down for 30 minutes then restart..

## MAINTENANCE

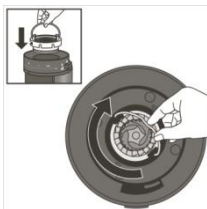
- To keep all your coffee's aroma and to avoid a degradation of the ground coffee, empty the ground coffee container after each use.
- Always unplug from the power outlet before cleaning.
- Never place the grinder, power supply cord or plug in water or under running water.
- Do not use strong detergents or abrasive pads to clean the appliance.
- Clean the lids and the ground coffee holder in warm, soapy water.
- To remove the upper burr, hold of the upper mill and turn counter clockwise, then raise it



vertically to remove.



- Clean the upper burr with the cleaning brush (k).
- Carefully clean the inside of the coffee bean box with a damp cloth.
- To replace the upper burr, insert the burr and turn it once in the clockwise direction. For proper alignment, residual coffee and coffee grounds in the lower burr will need to be



cleared,

## TROUBLESHOOTING GUIDE

Code in display	Trouble description	Trouble solution
E1	No bean holder or bean holder is not connected tightly.	Assembly the bean holder or tighten the bean holder until the micro switch is closed, once bean holder is close then error code E1 in display disappears.
	Motor is overheating.	Waiting for motor cooling down over 30 minutes and restart.
E2	Total operating is 4 cycles, it power off automatically to protect the unit.	Unplug power cord, waiting for it cooling down, then restart.
	Motor program is overheating.	Waiting for motor cooling down over 30 minutes and restart.

This appliance shall not be used by children. Keep the appliance and its cord out of reach of children.

Appliances can be used by persons with reduced physical, sensory or mental capabilities or lack of experience and knowledge if they have been given supervision or instruction concerning use of the appliance in a safe way and if they understand the hazards involved.

## TECHNICAL PARAMETER

**MODEL:** BD-CG001

**VOLTAGE:** 220V~240V, 50-60HZ (EC&UK)

120V~ 60HZ (US)

**POWER:** 165W

#### CORRECT DISPOSAL OF THIS PRODUCT



THIS MARKING INDICATES THAT THIS PRODUCT SHOULD NOT BE DISPOSED WITH OTHER HOUSEHOLD WASTES THROUGHOUT THE EU. TO PREVENT POSSIBLE HARM TO THE ENVIRONMENT OR HUMAN HEALTH FROM UNCONTROLLED WASTE DISPOSAL, RECYCLE IT RESPONSIBLY TO PROMOTE THE SUSTAINABLE REUSE OF MATERIAL RESOURCES. TO RETURN YOUR USED DEVICE, PLEASE USE THE RETURN AND COLLECTION SYSTEMS OR CONTACT THE RETAILER WHERE THE PRODUCT WAS PURCHASED. THEY CAN TAKE THIS PRODUCT FOR ENVIRONMENTAL SAFE RECYCLING.

**Importer:** WAITCHX

**Address:** 250 bis boulevard Saint-Germain 75007 Paris

**Importer:** FREE MOOD LTD

**Address:** 2 Holywell Lane, London, England, EC2A 3ET

**UK**

**REP**

EUREP UK LTD

UNIT 2264, 100 OCK STREET, ABINGDON  
OXFORDSHIRE ENGLAND OX14 5DH

**EC**

**REP**

EUREP GmbH

Unterlettenweg 1a, 85051  
Ingolstadt, Germany

**Manufacturer:** Zhongshan Dippers Electric Co., Ltd.

**Address:** 3rd&4th floor, building #7. No.109 Liyu mountain, Longtang, Wuguishan town, Zhongshan City, Guangdong Province, China.

**MADE IN CHINA**

# **VEVOR<sup>®</sup>**

**TOUGH TOOLS, HALF PRICE**

**TechnicalSupport and E-Warranty Certificate**

**<https://www.vevor.com/support>**