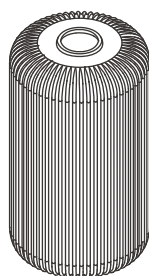
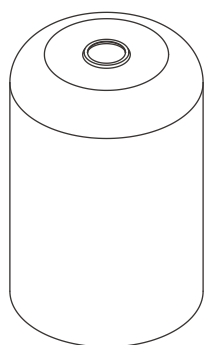


# Windsor pendant light

## INSTRUCTIONS

### INCLUDED



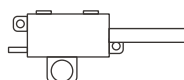
Pendant  
shade x2



Mounting plate & ceiling rose x1



Bulb holder & cover, lighting cables,  
aluminium spacer & (3x) rubber washer x1



Terminal box x1



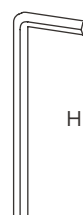
Fastening  
bolt x1



Ground screw x1



Chain x1



Hex key x1



Foam  
washer x1



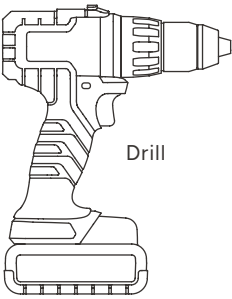
Anchor  
screw x2




Anchor x2

Windsor pendant light instructions

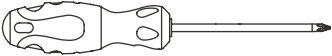
TOOLS YOU'LL NEED



Drill



6mm drill bit



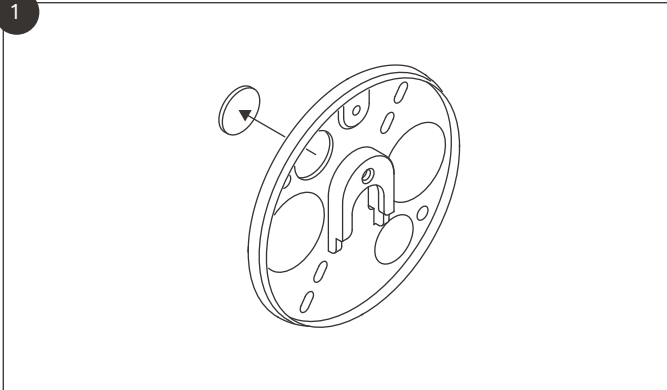
Crosshead  
screwdriver

Location	Interior
Class	Class II
IP rating	IP20
Driver required	No
Fire rating	No
Cable length	2m
Bulb typeLED strip	E27
Max wattage	12W LED
Bulb included	No
Switched	No
Dimmable	Bulb dependent
Rated voltage	230V-250V
Rated frequency	50-60Hz

Luminaries must be installed by a qualified electrician.  
All luminaries should be installed in dry conditions.  
Turn off electrical supply to circuit before installation.

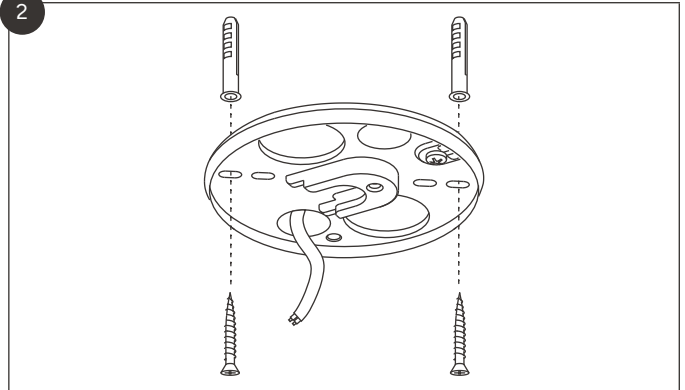
## Windsor pendant light instructions

1



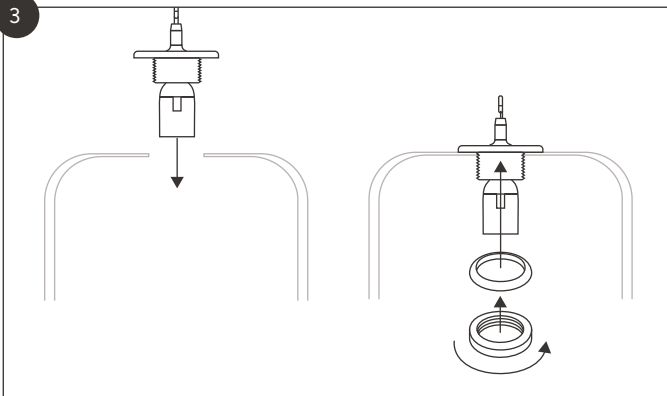
Push to remove the 'knockouts' on the mounting plate that best relate to where your mains power cables/ceiling cavity is located.

2



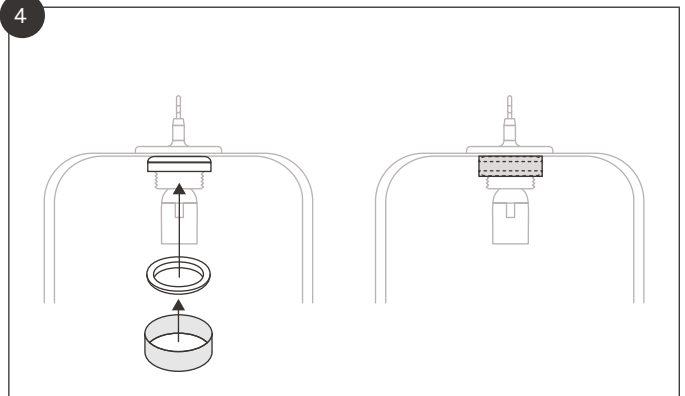
Screw the mounting plate to your ceiling using the anchors provided.

3



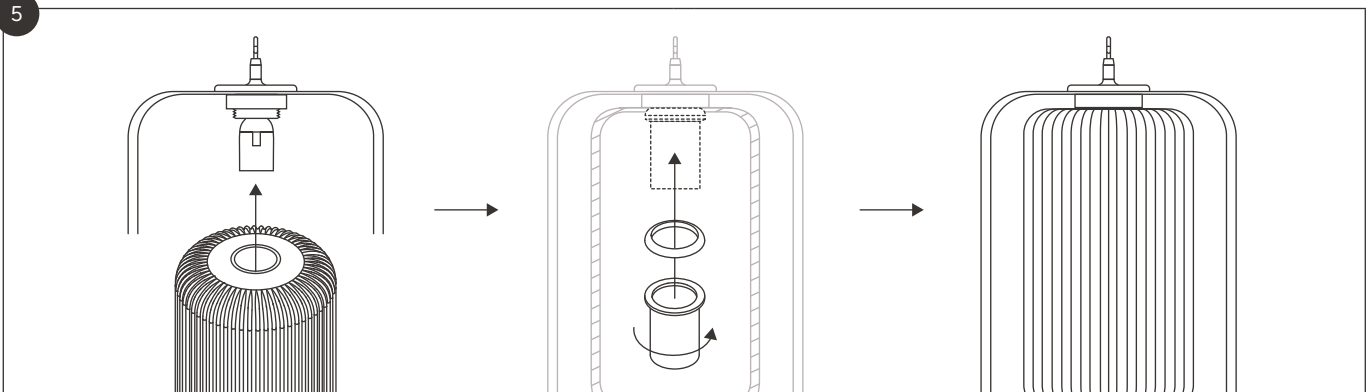
Drop the bulb holder through the larger shade. Add the rubber washer (curve face up) before threading the spacer over the top, clamping the pendant shade securely.

4



Add another rubber washer (curve face down) and the brass collar before adding the second, smaller shade.

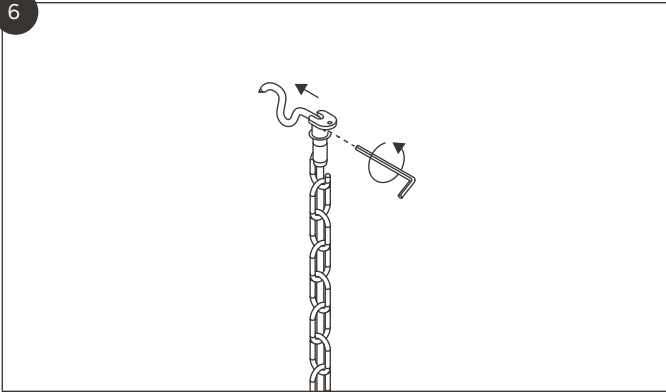
5



Use the final rubber washer (curve face up) and bulb cover to attach the two shades.

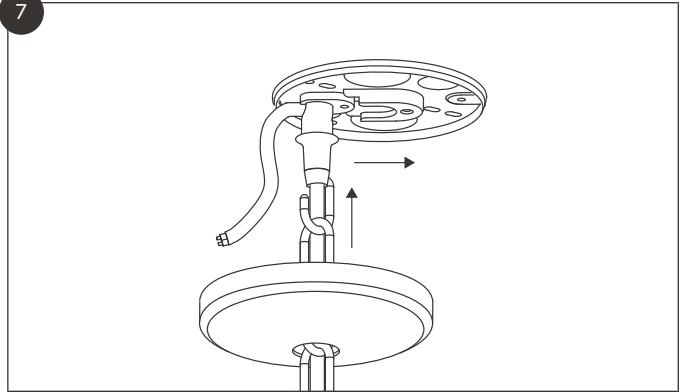
## Windsor pendant light instructions

6



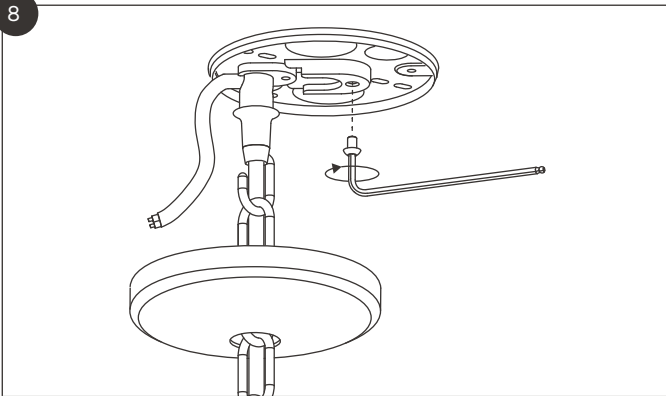
Adjust the length of the lighting cable using the grub screw on the end of the cable. Cut chain down if necessary.

7



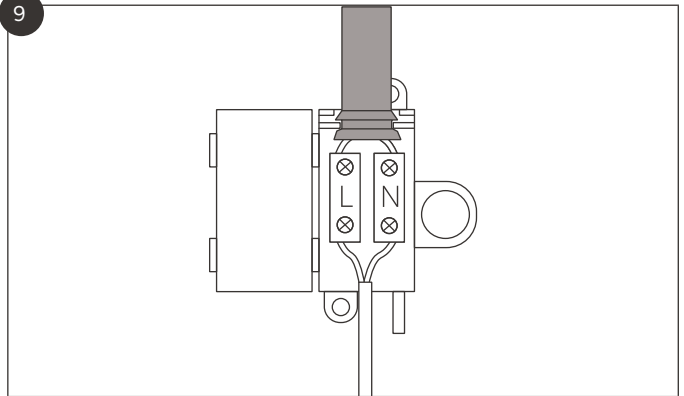
Hook the now-adjusted cable through the ceiling rose cover and slide into the centre of the pre-mounted plate.

8



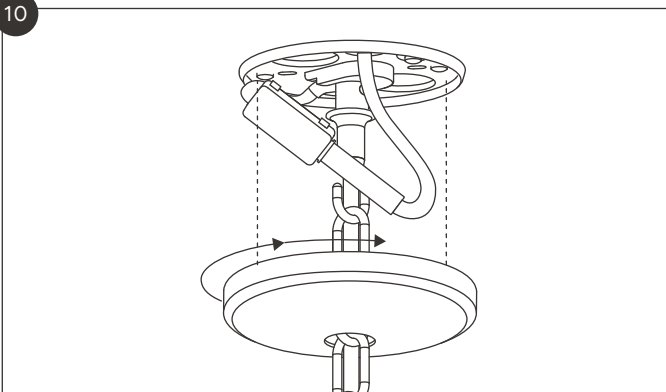
Repeat step 5 if the cable length is unsatisfactory, then secure in place with the fastening bolt.

9



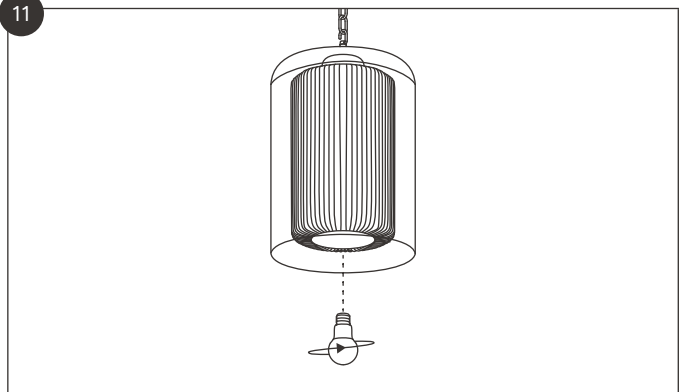
Make connections in terminal box provided.

10



Thread the cover over the mounting plate.

11



Add an E27 bulb.