

# LITHIUM BATTERY MINI CHAINSAW INSTRUCTION MANUAL



Please read this manual carefully before you use the product. Keep it for standby.

# Customer Support



Scan the QR code to get the instructional video

## Customer Support Email

[us\\_supportcare@163.com](mailto:us_supportcare@163.com)

[uk\\_support@126.com](mailto:uk_support@126.com)

We will reply to you within 24 hours and 100% solve your issue.

# Safety Warning

## Warning

Read all safety warnings, instructions, diagrams and regulations provided with the mini chainsaw. Failure to follow the instructions listed below may result in electric shock, fire or serious injury.

Keep all warning and instructions for reference.

### 1. Workplace

- Keep the workplace clean and bright. Chaotic and dark places can cause accidents.
- Do not operate mini chainsaw in an explosive environment.
- Keep children and bystanders to operate chainsaw after leaving.

### 2. Personal safety

- Keep alert, pay attention to the operation and stay awake when operating mini chain saw. Never operate chain saw when there is fatigue, drug, alcohol or treatment reaction.
- Use safety devices. Keep wear goggles and cut resistant gloves.
- Avoid sudden starting.
- Please keep the chain saw away from your body before turning on the chainsaw.
- Don't stretch your hand too long. Always pay attention to your feet and body balance.
- Don't wear loose clothes or accessories. Keep your hair, clothes and sleeves away from moving parts.
- If devices for connecting with chip removal devices and dust collection devices are provided, ensure that they are well-connected and used properly.

- Do not operate the chain saw in the tree. Operating a chain saw in a tree may cause personal injury.
- When cutting the tree branches under tension, please be alert to rebound. When the tension on the wood fiber is released, the elastic force on the branch may impact the operator or the chain saw and cause it to lose control.

### **3. Use and precautions of mini chainsaw**

- Do not abuse mini chainsaw. Choosing mini chainsaw with proper log size will make your work more efficient and safe.
- If the switch cannot turn on or off the power of the chainsaw, the mini chainsaw cannot be used.
- Before any adjustment, replacement of accessories or storage of chainsaw, please disconnect the battery from the chainsaw.
- Keep the chainsaw out of the reach of children.
- Check the installation deviation or jamming of all parts, broken parts and other conditions affecting the operation of chainsaw. In case of any damage, the chainsaw must be repaired before use.
- Keep cutting tools sharp and clean.

### **4. About battery**

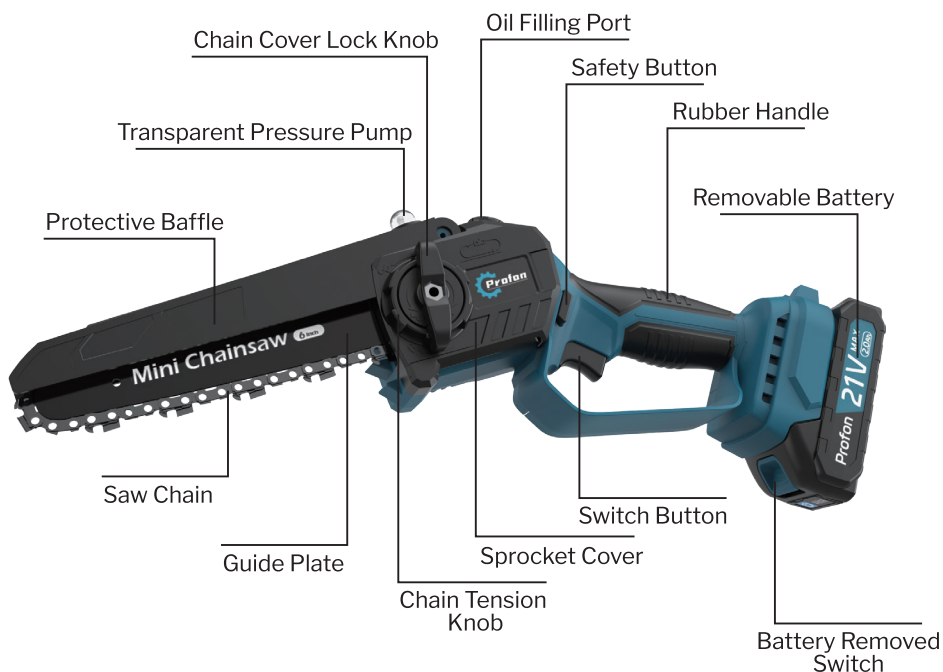
- Ensure that the chainsaw is switch off before inserting into the battery box.
- Only use the charger specified by the manufacturer for charging.
- When the battery case is not in use, keep it away from other metal objects, such as paper clips, coins, keys, nails, screws or other small metal. A short circuit at the end of the battery may cause spontaneous combustion or fire.
- The battery pack must be kept away from high temperature or flame! Do not put the battery pack on the heater, or expose it to strong sunlight.

- The battery pack shall be moisture-proof and mold proof. Do not touch water or rain.
- If the battery is not used for a long time, please charge and discharge it every 2 months and fully store it again.
- Do not discard the discarded battery packs in general household garbage, flames or water. Please collect the damaged battery packs and send them to the recycling center.
- When charging, it is forbidden to place the battery pack charger on combustible objects such as beds and sofas, and try to place it on tile floors, cement floors and other objects.
- When charging, please assign a special person to take care of it. Overcharging is strictly prohibited.

## **5. Maintenance**

You must use the same spare parts to replace your electric chainsaw when they are delivered to professional maintenance personnel.

# Structure Diagram



## Parts List

1x Mini Chainsaw

2x Guide Plate (6inch & 8inch)

2x Batteries

2x 6inch Chains

2x 8inch Chains

1x Charger

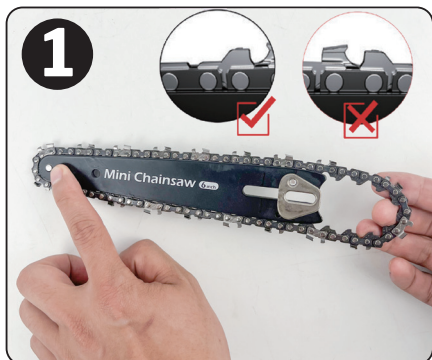
1x Safety Glasses

1x Gloves

1x Cleaning Brush

1x Tool Kit

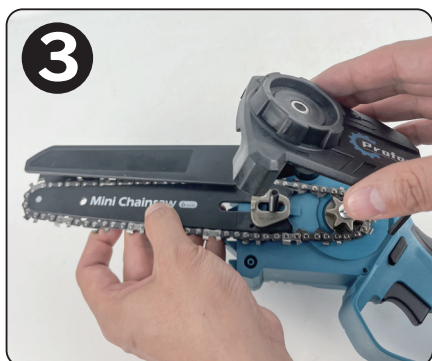
# Installation Steps



Install the chain into the guide plate.  
Note: The knife of the chain faces forward!



The middle guide is just clamped into the guide plate groove of the guide plate.



Align the pin hole and install the sprocket cover.



Clockwise spin the chain tension knob to adjust the tightness of the chain.



Tighten the chain cover lock knob for proper bar clamping force.



Install the battery.

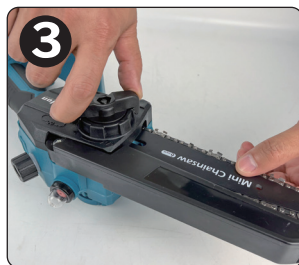
## Adjust The Chain Tension



**Steps 1:**  
Rotate the button as shown in the figure counterclockwise to loosen the cover.

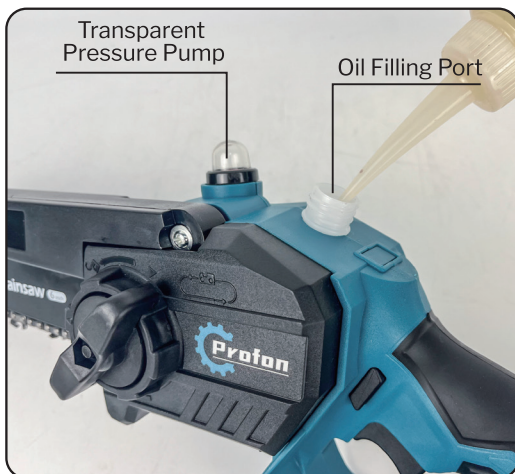


**Steps 2:**  
Turn the chain tension knob clockwise to tighten the chain.  
(Be careful to align the guide rails with the aid of the chain by hand.)



**Steps 3:**  
Tighten the knob as shown in the figure clockwise to tighten the cover.

## Lubricate The Chain



**Steps 1:**  
Pour the chain lubricating oil into the Oil Filling Port.

**Steps 2:**  
Press the transparent pressure pump, the oil will be automatically introduced into the saw.

**Steps 3:**  
With the operation of the chainsaw, the lubricating oil will be evenly lubricated to all parts of the chain.

**Tips:** Any chain oil with lubricating properties can be used with this product.



# Turn On / Off



Install the battery in the bottom of the mini chainsaw.



Press the safely button and keep it.



Keep press the switch button at the same time and the chainsaw turned on.



Loosen the safety button and hold the switch button, keep the chainsaw active.



Loosen the switch button, and you can turn off it.



After using, please unplug the battery in time.

## Note:

- 1) When the equipment is in operation, please keep your other hand at least 15cm away from the cutting area, and do not put your hand into the knife edge.
- 2) Do not use this equipment to forcibly cut large branches; otherwise the chain may be stuck.
- 3) In order to protect the battery pack in cold or humid weather, please put it under waterproof clothes. Please do not use this equipment in rainy days.

# Battery & Charger

## Installing or removing the battery pack

### 1. Install the battery pack

When inserting the battery pack, be sure to insert the battery pack correctly until you hear the sound of “click” which means that the battery pack is firmly installed on the machine.



Note: Only the battery packs of the specified model can be used. Using the battery packs of other brands may cause injury, personal injury and property damage due to battery explosion.

### 2. Remove the battery pack.

Press the battery pack button and then pull out the battery pack.

Note: Do not forcibly pull out the battery pack.



# Battery & Charger

3. Power display the power display is located at the battery pack. The power display status is as follows:

Battery Light Status	Approximate Remaining Power
Four Lights are on continuously	65-100%
Three Lights are on continuously	30-65%
Two Lights are on continuously	5-30%
One Light is on continuously	0-5%



- After inserting the charger plug into the socket, then insert the battery pack into the charger and start charging when the red light is on.
- The indicator light is rad during charging and the indicator light turn green when charging is complete.
- Avoid charging at high or low temperature.

## Note :

1. Please make sure the battery is fully charged when using it for the first time.
2. The service life of the battery may be reduced accordingly in winter which is normal and not a malfunction.

## Tips

**Incorrect operating conditions will cause the chainsaw to lose control or chain rebound, which can be avoided by following these precautions:**

- 1) Keep a firm grip, hold the chainsaw handle and adjust the position of your body and arms to prevent rebound.
- 2) Do not extend the tool too far and do not cut above the shoulder. This helps prevent the head of the guide plate from touching objects and better control the tool in case of accidents.
- 3) Please only use the replacement guide plate and chain specified by the manufacturer. Using inappropriate replacement guide plate and chain may lead to chain breakage or rebound.

**Before starting the operation, please check in particular:**

- 1) The chain brake can work normally;
- 2) Battery has full charge;
- 3) The guide plate and the chain are well matched with each other;
- 4) The chain has been sharpened and tensioned according to the specifications.

**If there is any further problem about the product, please feel free to contact us :**

**Customer Support Email :**

us\_supportcare@163.com

uk\_support@126.com

We will reply to you within 24 hours and 100% solve your issue.