

PORODO
LIFESTYLE



Porodo Lifestyle

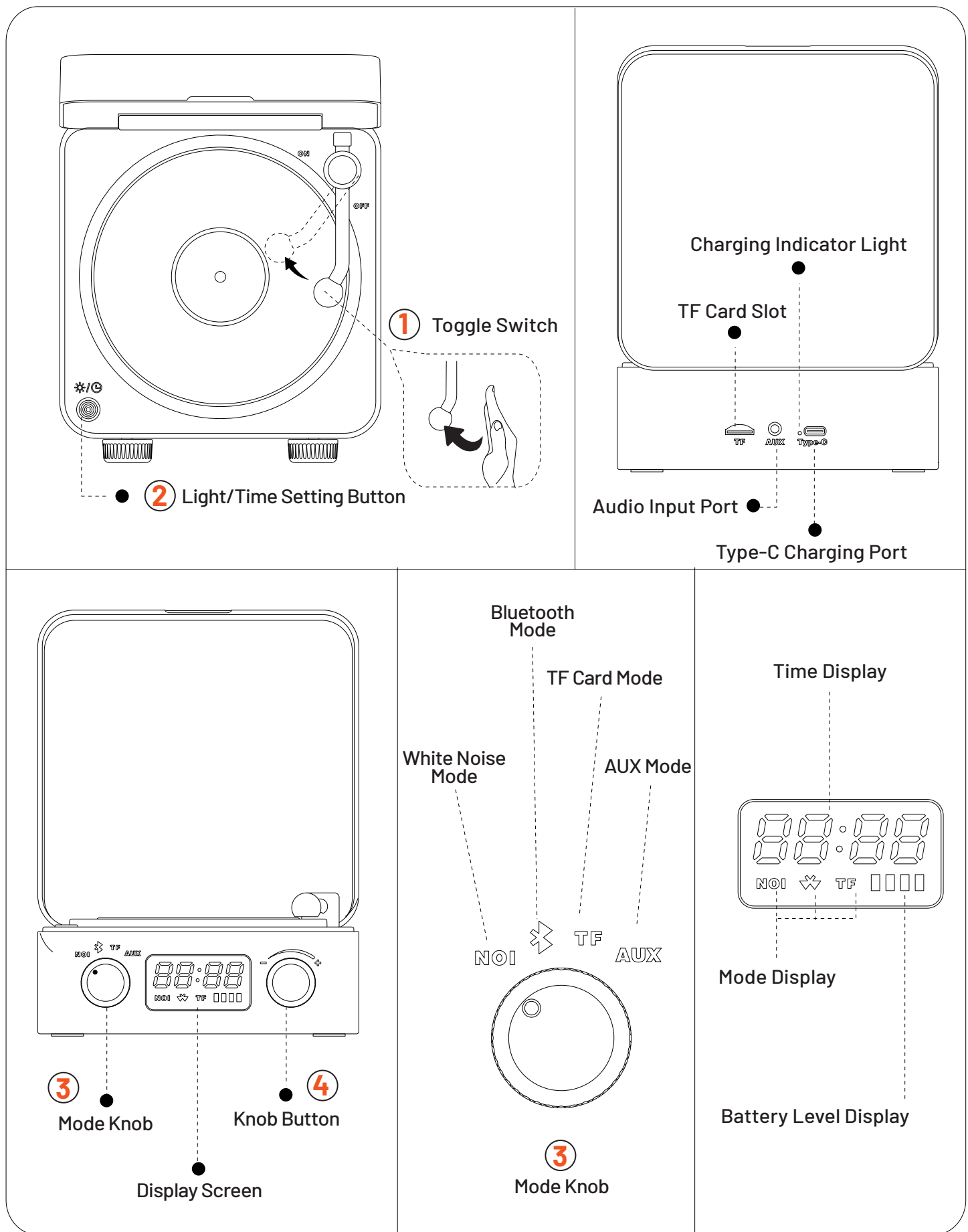
**White Noise
Portable Speaker**

SKU: PD-LFST074

Table of Contents

Product Overview	2
Button Function Guide	3
Projection Light Function	4
Automatic Screen Off	4
Troubleshooting	4
Charging Instructions	5
Specifications	6
FCC Statement	6
Warnings	7
Disposal	7
Warranty	8
Contact Us	8

Product Overview



Button Function Guide

[A] Power Button ①

Toggle the power button ① to the left to power on, and to the right to power off.

Note: Powering on automatically activates the single light mode.

[B] Light/Time Setting Button ②

[B.1] Light Setting: After powering on, press ② to toggle through the light modes: solid white light, single-color gradient, multicolor gradient, and lights off.

[B.2] Time Setting:

1. After powering on, press and hold ② for 1 to 2 seconds to enter time adjustment mode.
2. When the clock hour digits blink, rotate the ④ knob to adjust the hour.
3. Once the correct hour is set, press ② to confirm and proceed to minute adjustment.
4. When the clock minute digits blink, rotate the ④ knob to adjust the minutes.
5. After setting the correct minute, press ② to confirm, completing the time adjustment process.


[C] Mode Knob ③

[C.1] White Noise Mode:

1. After powering on, rotate ③ until the small dot points to the NOI .
This indicates White Noise Mode.

- a. First track: Ocean waves.
 - b. Second track: Campfire crackling.
 - c. Third track: Bird songs.
 - d. Fourth track: Flowing stream.
2. Press the ④ knob to switch to the next track.
 3. Double-click the ④ knob to return to the previous track.

[C.2] Bluetooth Mode:

1. After powering on, rotate the ③ knob until it points to the Bluetooth icon  .
This activates Bluetooth Mode.
2. Open your phone's Bluetooth settings.
3. Search for the Bluetooth pairing name "White Noise Speaker" and select it to connect.

4. To turn off Bluetooth, long-press the ④ knob.

[C.3] TF Mode:

1. After powering on, rotate ③ until the small dot points to the TF icon.
2. Insert a TF card into the slot located at the back of the device.
3. The device will automatically play the songs stored on the TF card.

[C.4] AUX Mode:

1. After powering on, rotate ③ until the small dot points to the AUX icon.
2. Connect an audio device via a 3.5mm audio cable.
3. The songs from the connected audio device will play through the device.

[D] Knob Button

1. Volume Adjustment: Rotate the knob to modify the volume. Turning it left decreases the volume, while turning it right increases the volume.
2. Track Navigation:
 - a. Single-click: Advances to the next track.
 - b. Double-click: Returns to the previous track.
3. Bluetooth Control (In Bluetooth mode):
 - a. Press and hold: Turns the Bluetooth on or off.
 - b. Time Adjustment Mode: Rotate the knob to adjust the time settings.

Projection Light Function

When the device light is turned on, place the device in a relatively dark space to project water ripple effects onto the surrounding walls.

Automatic Screen Off

After the display screen lights up, it will automatically turn off after one minute. To reactivate the screen, gently tap any part of the device.

Troubleshooting

1. Multiple Unsuccessful Pairing Attempts

- 1.1 Turn off both the speaker and the phone's Bluetooth, then restart them.

1.2 Ensure that the connection name is "White Noise Speaker".

2. Music Playback Experiences Interruptions

2.1 Check if the distance between the speaker and the phone exceeds the effective range or if there are obstacles between them.

2.2 Ensure stable phone network connectivity and verify if the speaker's battery is low.

3. No Sound During Playback

3.1 Check if the speaker volume is at its lowest (rotate the knob to adjust the volume).

3.2 Ensure the mode knob **③** is set to the correct mode.

4. Unable to Power On

4.1 If the device has been used for an extended period and the battery is nearly depleted (resulting in all functions shutting down), move the lever **①** to the right.

4.2 Plug in the charging cable and charge the device for at least 2 hours before trying again.

Charging Instructions

1. Use the provided charger or one with equivalent specifications to charge the device.

2. Charge the device as soon as possible if the battery level is low or insufficient during use.

3. Avoid operating the device under high-temperature or high-pressure conditions.

4. If the device is not used for an extended period, charge it at least once a month to ensure the battery remains sufficiently charged and the device functions properly when needed.

5. Charging Indicator Light:

5.1 During charging, the indicator light will be red.

5.2 Once the device is fully charged, the light will turn off.

Specifications

Battery Capacity	1500mAh
Input	5V/1A
Recharge Time	2h
Working Time	Up to 6H
Power	5W
Speaker	40mm 4Ω 5W
Bluetooth	V5.0
Transmission Range	10m
Frequency Response	80Hz to 20KHz
Weight	498g
Dimensions	67×142×153mm

FCC Statement

This device complies with Part 15 of the FCC Rules. Operation is subject to the following two conditions:

- This device must not cause harmful interference.
- This device must accept any interference received, including interference that may cause undesired operation.

Any changes or modifications not expressly approved by the party responsible for compliance may void the user's authority to operate the equipment.

Note: This equipment has been tested and found to comply with the limits for a Class B digital device pursuant to Part 15 of the FCC Rules. These limits are designed to provide reasonable protection against harmful interference in residential installations. This equipment generates, uses, and can radiate radio frequency energy. If not installed and used in accordance with the provided instructions, it may cause harmful interference to radio communications.

However, there is no guarantee that interference will not occur in a specific installation. If this equipment causes harmful interference to radio or television reception—which can be determined by turning the equipment off and on—the user

is encouraged to try correcting the interference by implementing one or more of the following measures:

- Reorient or relocate the receiving antenna.
- Increase the distance between the equipment and the receiver.
- Connect the equipment to an outlet on a circuit different from the one to which the receiver is connected.
- Consult the dealer or an experienced radio/TV technician for assistance.

To maintain compliance with FCC RF Exposure guidelines, this equipment should be installed and operated with a minimum distance of 20 cm (approximately 8 inches) between the radiator and your body. Use only the supplied antenna.

Warnings

1. Keep the device away from children, infants, and pets.
2. Do not expose the product to water. To avoid electric shock, never immerse the device in water.
3. Place the device on a flat and stable surface.
4. Avoid exposing the device to extreme heat or humidity.
5. The device should not be dropped or subjected to impacts. If this occurs, take the device to a professional service center for inspection.
6. Do not disassemble or modify the device, as it may result in serious damage or injury.
7. Ensure the charging power source matches the device's requirements. Always use branded and certified adapters.
8. If any problems or malfunctions occur, do not attempt to repair the device yourself. Instead, refer it to a professional service center for proper inspection and repair.

Disposal

This product must not be disposed of as unsorted household waste. It is important to separate such waste for proper treatment and recycling, in compliance with local waste management regulations.

Warranty

Products that you buy directly from our **Porodo** website or shop come with a 24-month warranty.

When you buy **Porodo** products from any of our approved sellers, you only get a 12-month warranty. If you want to extend this warranty, go to our website at **porodo.net/warranty** and fill out the form with your information. Don't forget to upload a picture of the product too. After we've checked and accepted your request, we'll send you an email to confirm that your product's warranty has been extended.

For more info, please check:

porodo.net/warranty

Contact Us

If you have any questions about this Privacy Policy, please contact us at:

info@porodo.net

Website: **porodo.net**

Service Support: **support@porodo.net**

Instagram: **porodo**