

# SIZZAPP APP Manual

**SIZZAPP** is Smart security system and reliable trip mate for your vehicle.

It is a compact, easy to install monitoring device without contract and monthly fees.

Track your vehicle location, protect it from thefts and receive notifications even if you are not around.

With the help of this document, you will learn everything about working with the SIZZAPP application, from how to register an account to all the features available in the application.

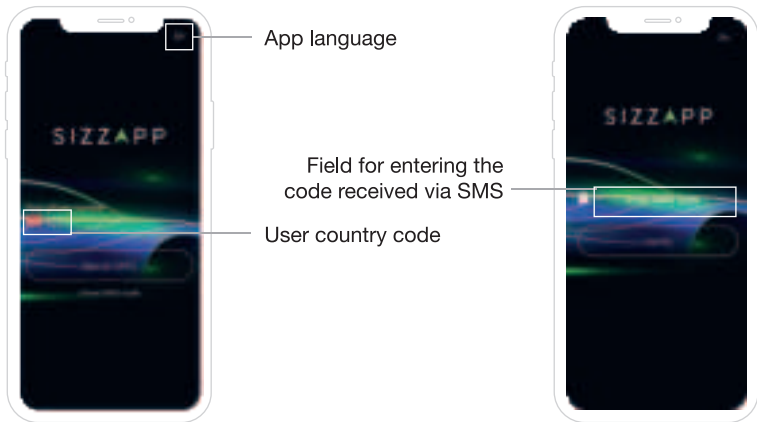
SIZZAPP App Tutorial can be also found in video format:



## Table of content:

<b>Registration</b>	<b>3</b>	<b>Share the trip</b>	<b>11</b>
<b>Main menu</b>	<b>4</b>	<b>Speed</b>	<b>12</b>
<b>Profile</b>	<b>5</b>	<b>Settings</b>	<b>13-16</b>
<b>Device settings</b>	<b>6</b>	Settings menu	13
<b>Map</b>	<b>7-10</b>	Notifications and geofences settings	14
Routes	7	Organizer	15
Eco-drives	8	FAQ, terms and conditions, contact us	16
Geofences	9		
Notifications	10		

# Registration



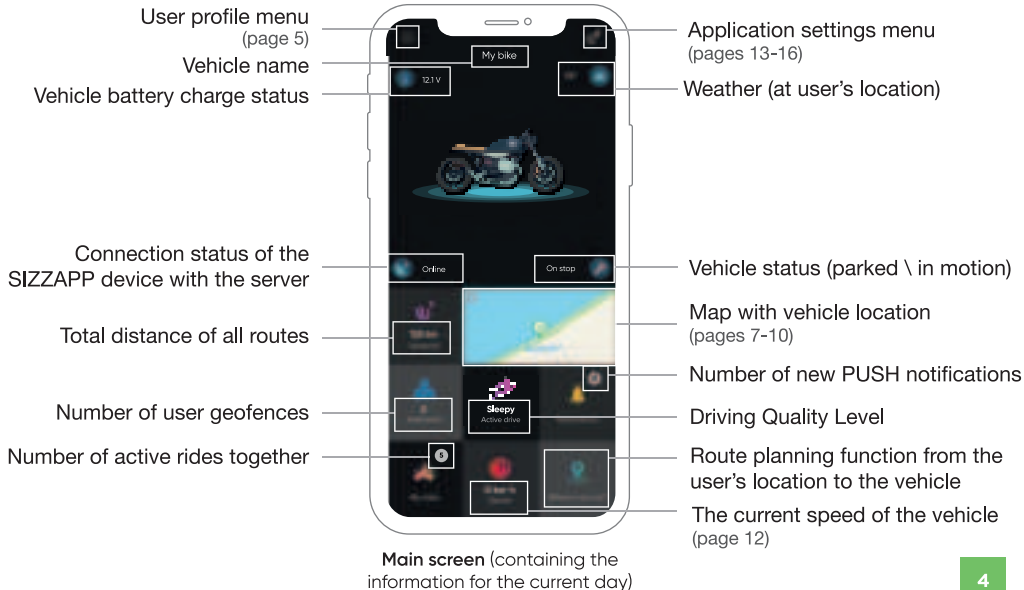
Registration / Authorization Screen

Code Confirmation Screen

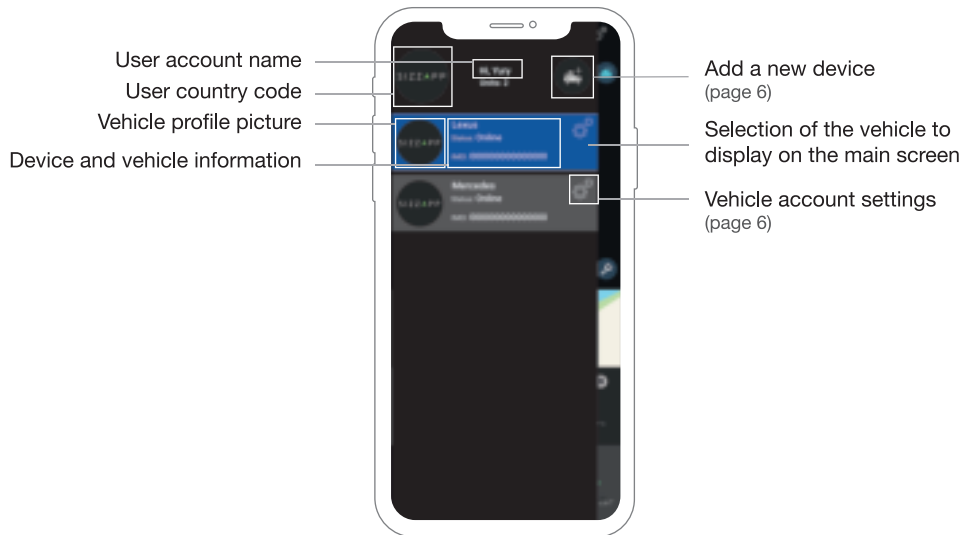
- 1 Sending a request to receive SMS with a 4-digit authorization code
- 2 Go to code entry screen (code valid for 10 minutes)

- 1 Enter the code received via SMS
- 2 Authorization and login to the application

# Main menu



# Profile

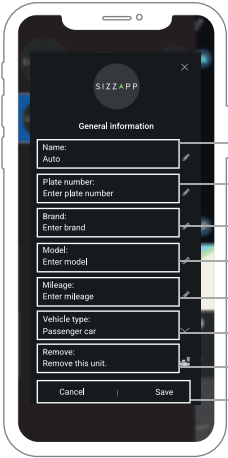
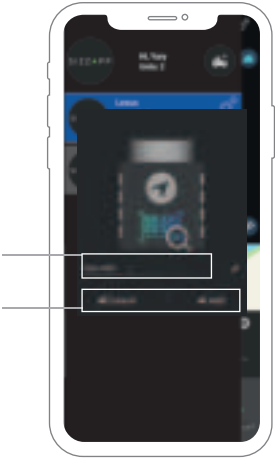


Profile and vehicle management screen

# Device settings

Field for entering  
the unique 15-digit  
device IMEI number

Cancellation/  
Confirmation



Device name to display  
in the application

Vehicle registration  
number

Manufacturer

Model

Mileage

Vehicle type selection

Deleting an object

Cancellation/Confirmation

New device account adding screen    Device account settings screen

# Map

## Routes

Displaying the current location of the vehicle

Share trips  
(page 11)

Visual display of routes and stops

Open list of routes and stops

Summary statistics for the selected period

Go to home screen



Route history screen



Selecting a period

List of routes and stops

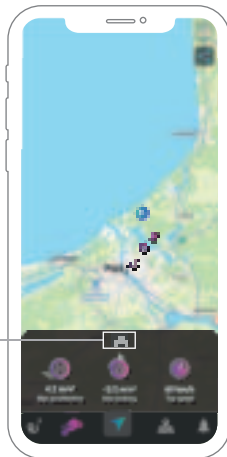
List of routes and stops screen



# Map

Sleepy

Opening / closing  
the list and calendar



Selecting a period

Showing the  
addresses where the  
maximum values  
have been reached

Driving style screen  
(depending on the type of transport selected)

# Map

## Geofences

- Opening / closing the list and calendar
- List of active geofences
- To delete a geofence, drag to the left
- Creating a new geofence
- Geofence notifications settings



Geofence screens

# Map

## Notifications



Notifications screens

# Share the trip

Selection of  
desired trips

Cancellation/  
Confirmation



Route Selection screen  
step 1

Speed and  
address displays

Cancellation/Sharing

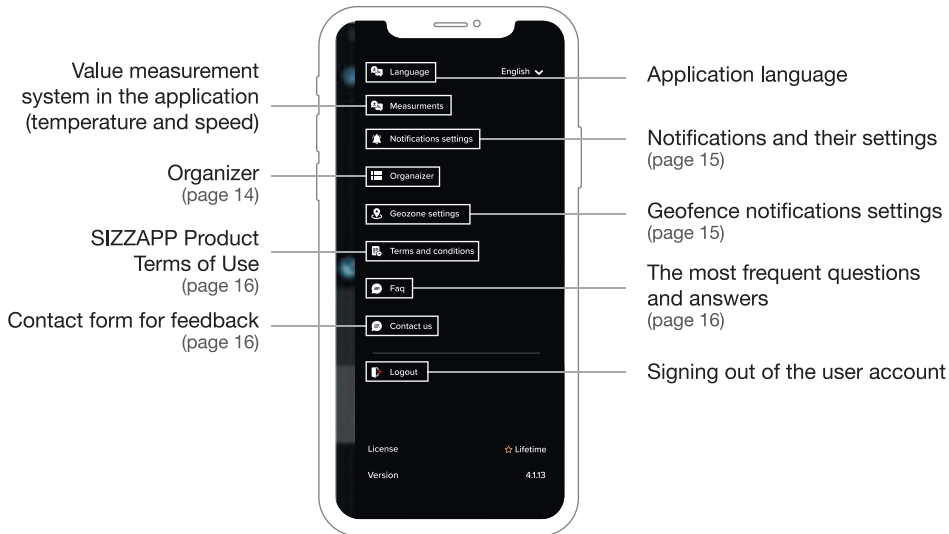


Sharing Trips screen  
step 2



### Detailed speed screen

# Settings



Application main settings screen

# Organizer

Methods for receiving notifications

Available event types



Organizer settings screen



Scheduled date

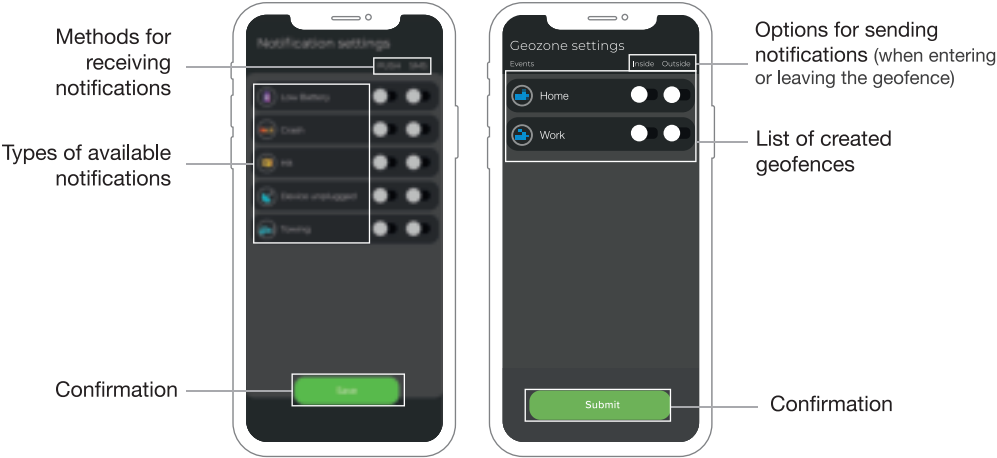
Selecting a new date

Choosing a notification method

Confirmation/  
Cancellation

Technical inspection event screen

# Settings

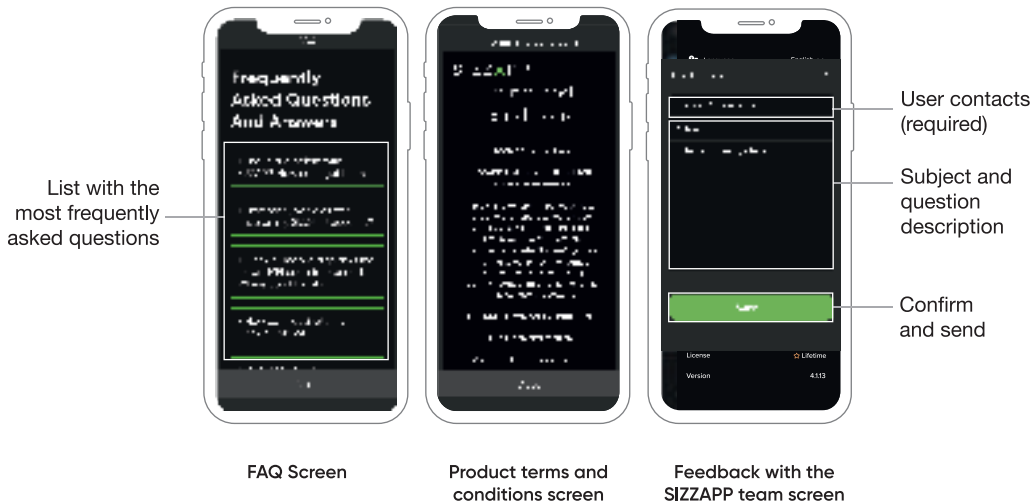


Notification settings screen

Geofence notifications settings screen



# Settings



S I Z Z ▲ P P

The future of vehicle security