

# BRAUMAT®

## Recipe based Control System for Brewing and Malting



**GB(FHOP10** Genereller Kommentar

Bitte korrigieren:

- eine Menge falsche/doppelte Leezeichen und unglückliche Zeilenumbrüche
- fehlende Ausrichtung der Elemente/Text
- ungleiche Schriftarten/-größe
- anscheinend viele 'Copy&Paste issues'
- fehlende/falsch platzierte Trennlinien
- unharmonische Zeilenabstände, und Formatierungen

In Summe wirken die Folien noch sehr 'roh' und noch nicht wirklich review-ready.

Gehle, Bjoern (DI FA HMI O&I PP, 2022-11-14T10:01:22.326

# Current Challenges of breweries and malt houses

- 1 Increasing complexity of operation
- 2 Demand for process transparency
- 3 Faster and flexible adaption of recipes

- 4 Reduction of manual and routine work
- 5 Investment protection and future-proofness
- 6 Fast support and maintenance



# BRAUMAT® the SCADA based process control system

Recipe controlled processes

Batch based operations (ISA88)

Complex Silo or Tank material transfers

Multiple Reporting options

Seamless Scalability

IT/OT Integration

Future investment protection

# BRAUMAT® the SCADA based process control system

Recipe controlled processes

Batch based operations (ISA88)

Complex Silo or Tank material transfers

Multiple Reporting options

Seamless Scalability

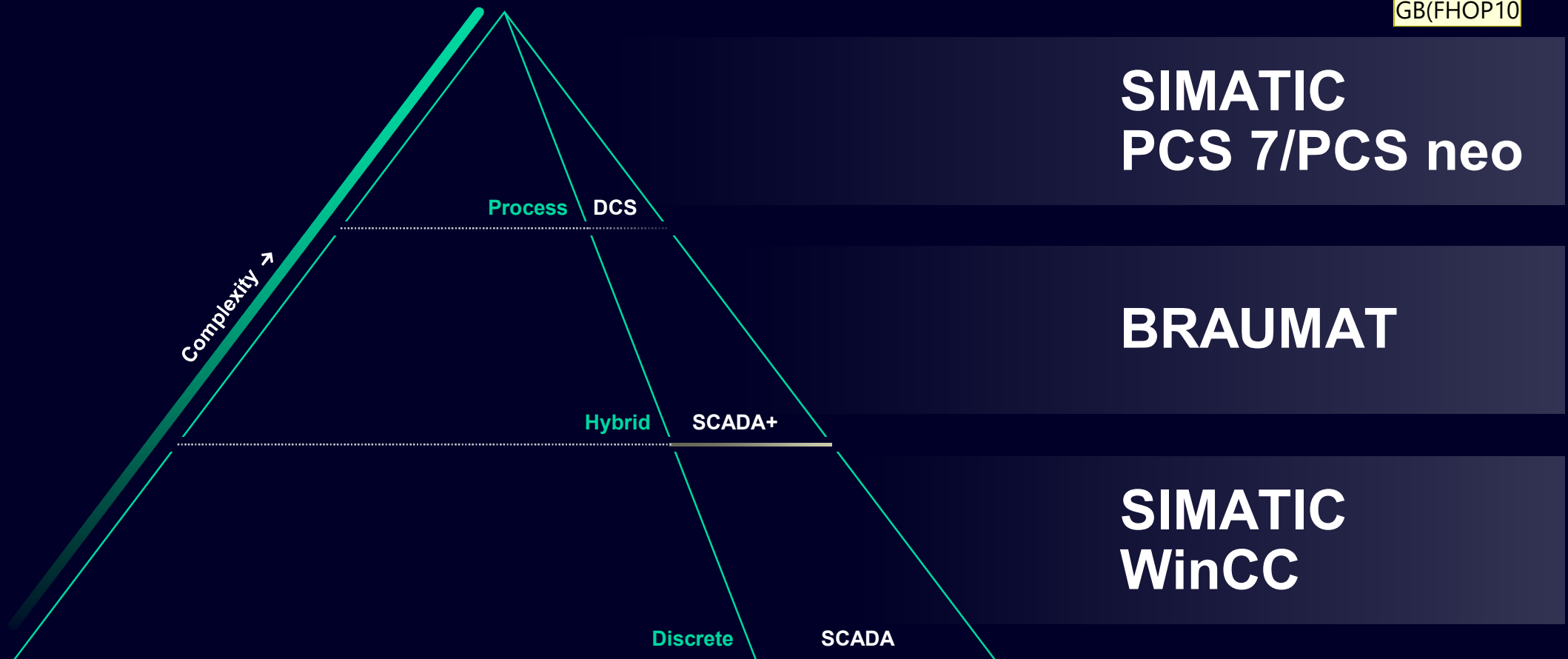
IT/OT Integration

Future investment protection



**BRAUMAT® – The layer between DCS and SCADA.**  
SCADA based technology providing control system functionality.

GB(FHOP10)



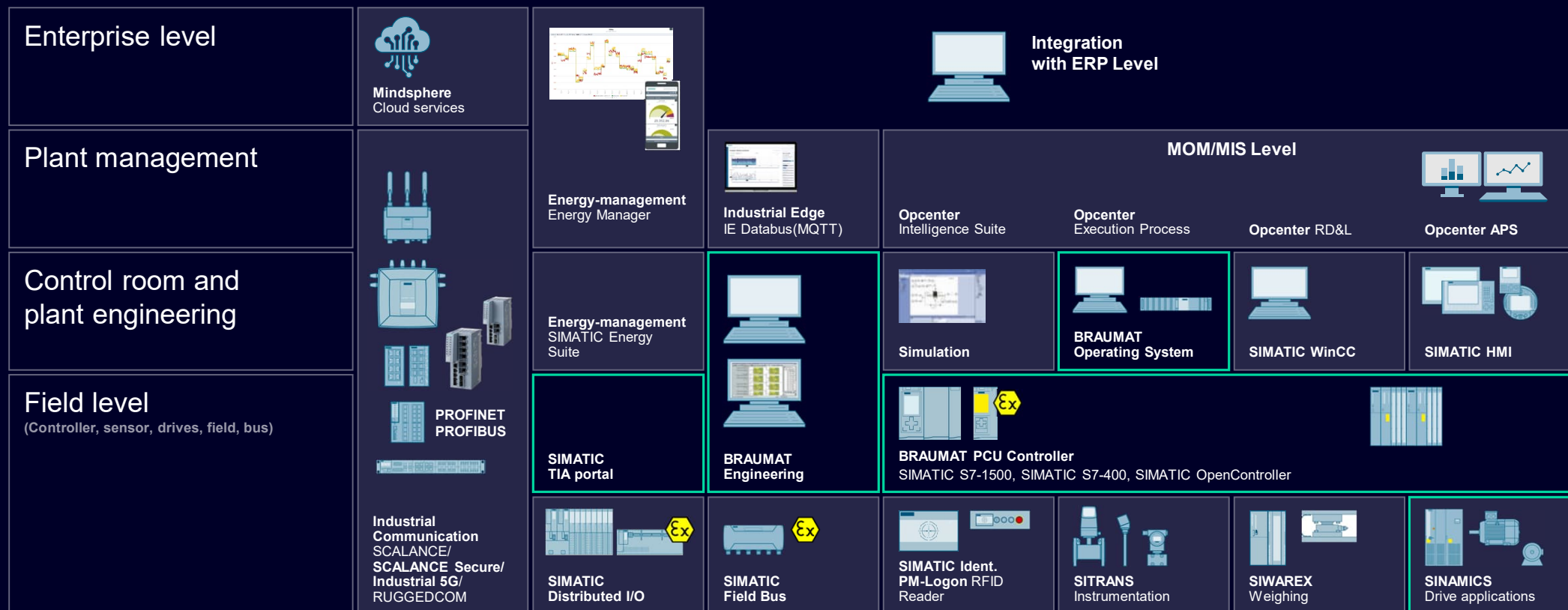
## Slide 6

---

**GB(FHOP10** Stimme Euch beiden zu... nun ja, SCADA + erzählt doch bereits die Story: WinCC Unified plus SIQENCE schließt die Lücke zwischen WinCC (SCADA) native und DCS

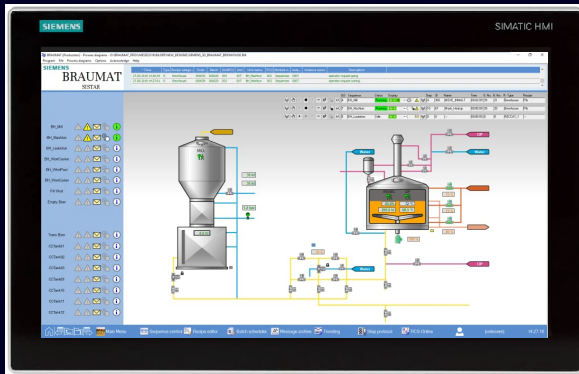
Gehle, Bjoern (DI FA HMI O&I PP, 2022-11-11T10:33:13.196

# BRAUMAT® - Siemens comprehensive portfolio around batch processing

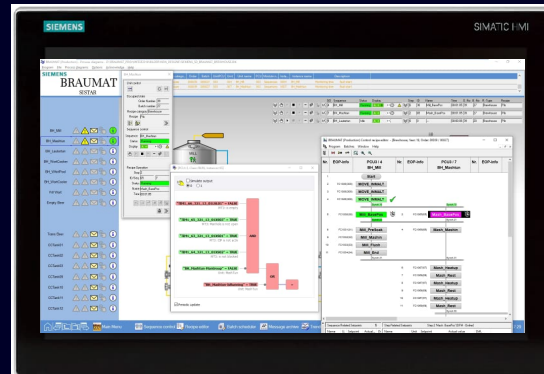




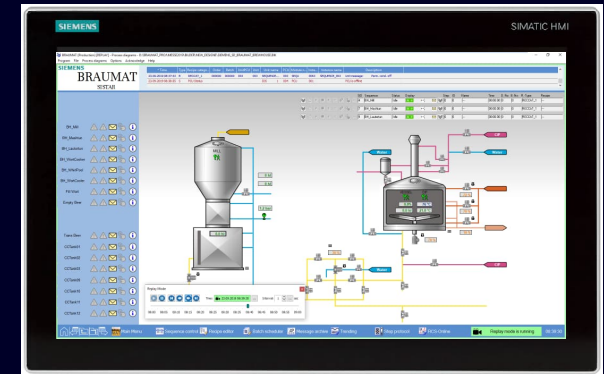
# BRAUMAT® - Recipe controlled automation for batch-based production



Process control screen



Recipe/Batch control screen



Process data recording

**BRAUMAT** is the SCADA and PLC based recipe control system with focus on batch processes

- Easy to operate processes
- One person can be trained in 5 days to engineer and/or operate the entire system
- Modifications are possible in running process with very short turnaround times
- Huge installed base mainly with more than 45 years successful history, once started in the brewing industry
- Available in English, German, Spanish, Chinese, French, Portuguese and Polish, other languages as option



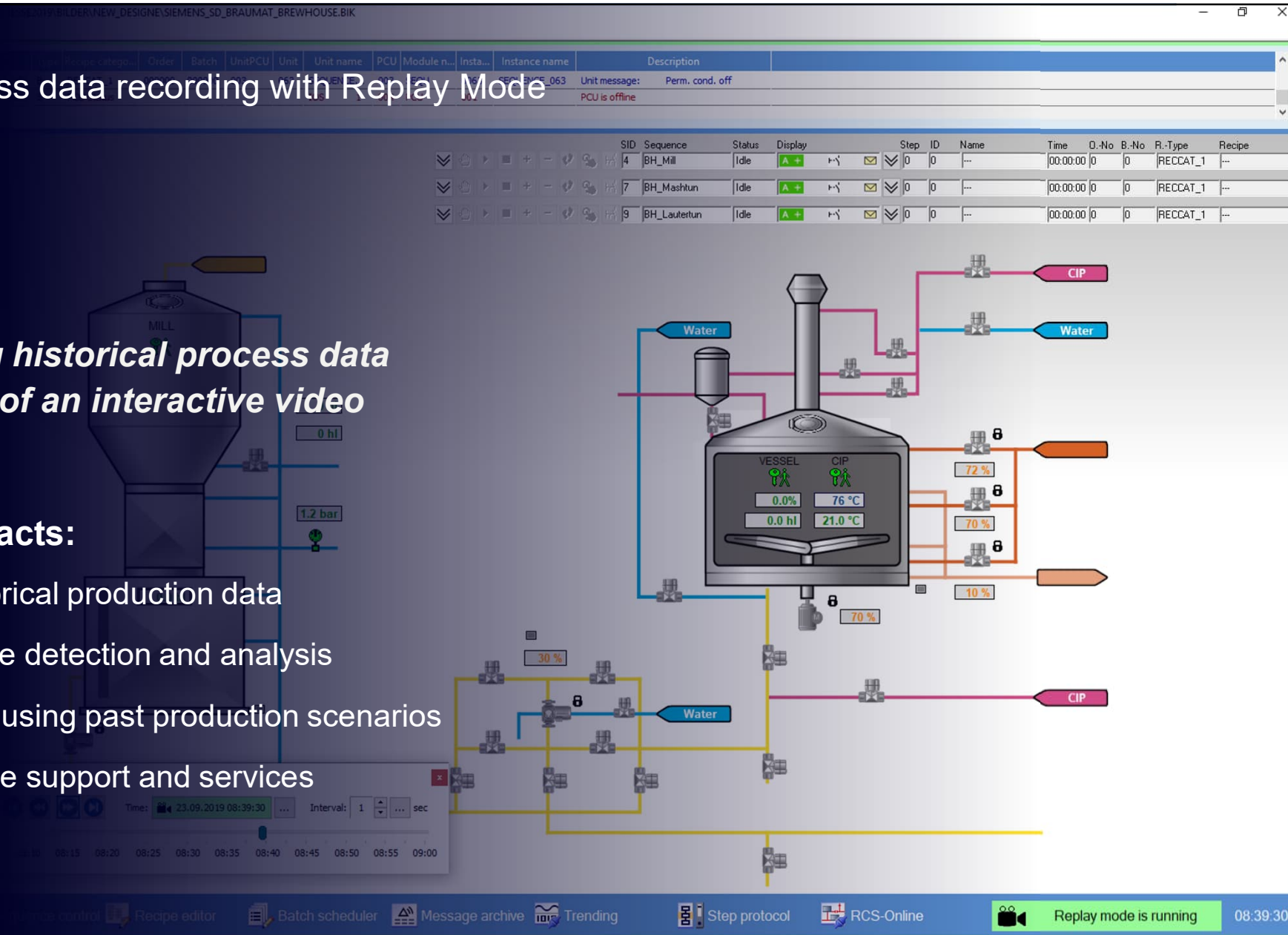
# BRAUMAT – Process data recording with Replay Mode

## The Replay Mode

*enables displaying historical process data with the look&feel of an interactive video*

### Replay Mode key facts:

- Visualization of historical production data
- Easy error root cause detection and analysis
- Operator training by using past production scenarios
- Ideal basis for remote support and services







The background image shows a complex industrial piping system, likely for a chemical or pharmaceutical plant. It features numerous stainless steel pipes, valves, and actuators. A blue semi-transparent overlay covers the right side of the image, where the text is located. The lighting is bright, highlighting the metallic surfaces.

## Route Control System – Transfer management with plausibility checks

Automated transfers of different materials  
including CIP

---

Planning based on preconfigured partial routes

---

Key to achieve for state-of-the-art silo  
and tank farm automation

---

Dynamic and constraint-based search  
for a path between source and destination

---

Graphical Route Viewer for transparency

# BRAUMAT and Opcenter Execution Process – Value Proposition for breweries and malt houses

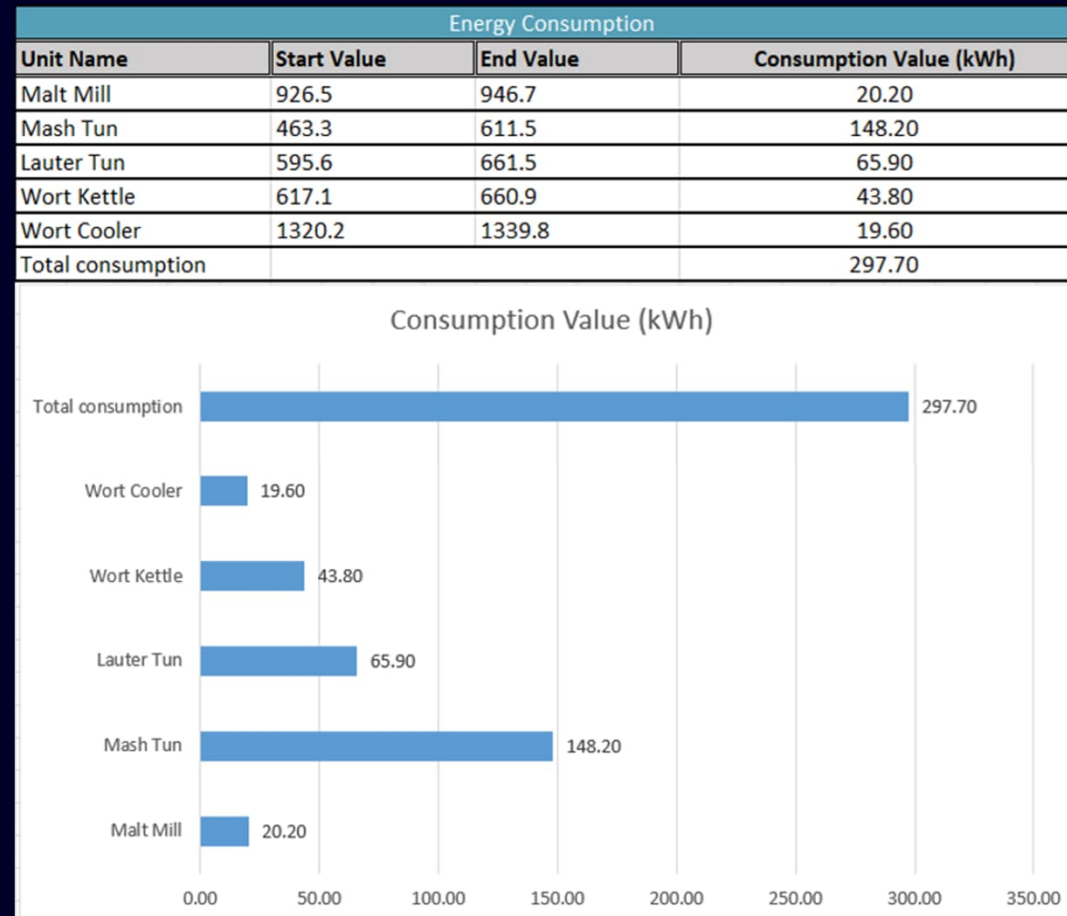
- Integrated execution of batch-based operation (ISA 88.1) into MOM (ISA 95) workflows
- Out of the box interplay between Opcenter and Braumat
- MOM based global manufacturing templates may include now the BRAUMAT system
- Deployable in MOM multiplant scenarios by combining security, usability and robustness



## BRAUMAT – and SIMATIC Energy Suite for improved energy efficiency

# BRAUMAT and SIMATIC Energy Suite

- Energy transparency about each process step, unit and procedure in accordance with ISO 50001
- Batch based energy reporting to get to know energy costs
- Avoiding expensive energy peaks with load management
- Optimizing the energy consumption by using the SIMATIC Energy Manager



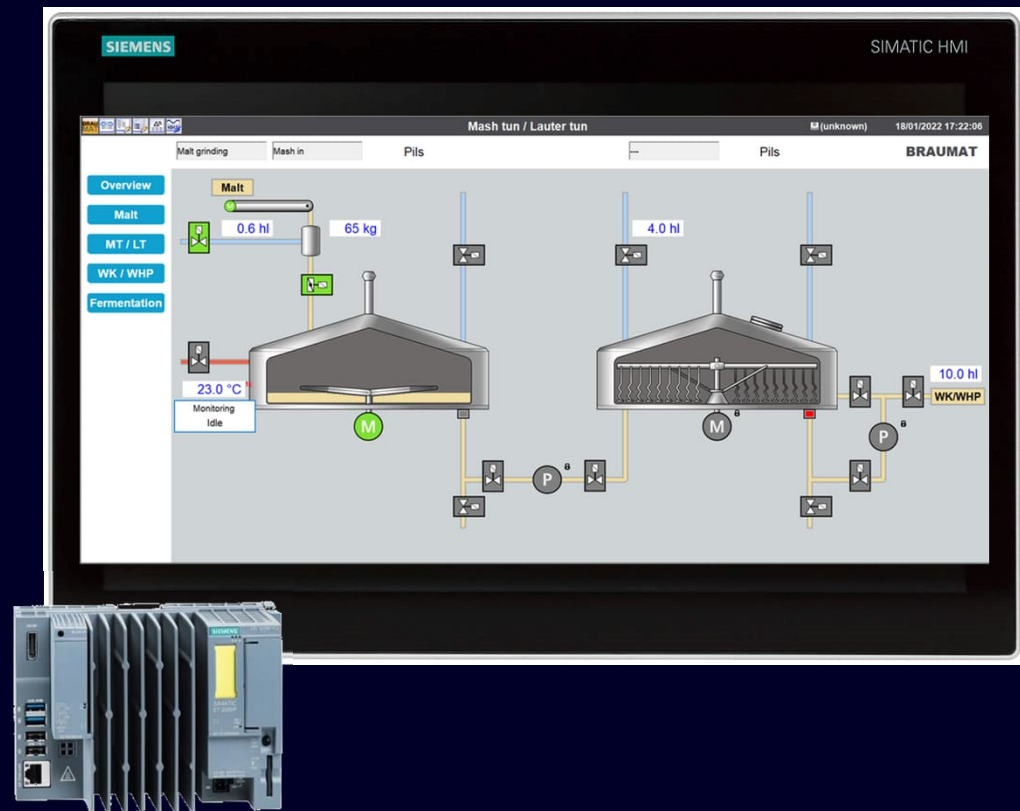
## BRAUMAT® – LEAN edition the entry-level solution

### BRAUMAT LEAN edition

- For 1 PCU and 1 Server configurations
- Price level like a small SCADA system - but with full process control functionality and batch engine

#### Corner points

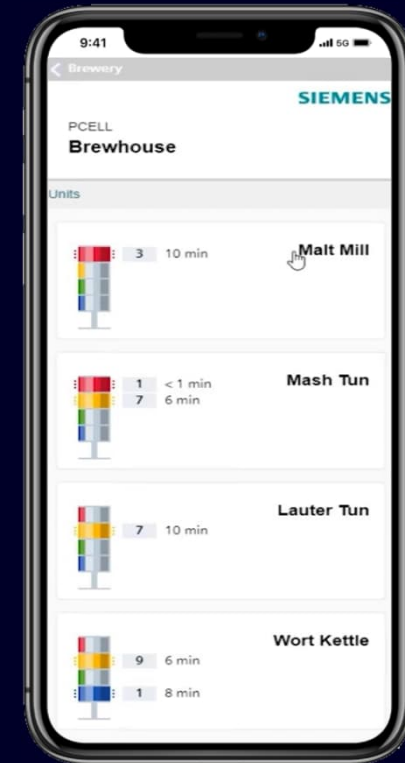
- Additional operator clients can be added at any time
- Replay mode integrated
- Can seamlessly be upgraded to BRAUMAT Full Edition



## BRAUMAT - Web monitoring and mobile solutions

### BRAUMAT mobile solution

- Keep track of the process – even under mobile conditions
- Basic functions on board like events, alarms
- Optional: E-Mail, SMS, pager, printer including dashboard for analyzing
- Optional: Escalating alarm via predefined participants or operators
- Process screens based on HTML5 to be flexible



## BRAUMAT - Safety functionality

# BRAUMAT Safety first

- Preventing harm to staff (i.e. manhole, mill, motor and more)
- Helps to avoid spoiled food
- CPU S7-1518HF as safety edition, also for mixed configurations
- Can seamlessly be integrated into the BRAUMAT installation



## BRAUMAT - Cybersecurity and Safety functionality

# BRAUMAT Cybersecurity

- PCU protection via HW protected password security
- Terminal bus secured for preventing man in the middle attacks
- Optional: Operator stations secured via RFID card
- Hot-Standby PCU – located up to 10km away from each other in supporting your emergency plan

## Industrial Cybersecurity Services

- Plant Security Services: IEC 62443 Assessments & Consulting
- Network Security Services: NG Firewalls, DMZ, Anomaly Detection
- System Integrity Services: Endpoint Protection; Vulnerability & Patch Management; Backup&Restore



## BRAUMAT – Our Solution offering, to ensure your success



- **360-degree process automation** consulting with focus on plant operation efficiency and sustainability.
- Tool based **standardization for each project phase** with defined project documentation. GB(FHOP10)
- **Cyber secured** remote services available.
- Experience out of numerous Brownfield or Greenfield plant projects since 1977 – **worldwide**.



## Slide 19

---

### GB(FHOP10 Schriftgröße

Gehle, Bjoern (DI FA HMI O&I PP, 2022-11-14T10:02:27.910

### SO0 0

Danke für den Hinweis - wird geändert

Speck, Juergen (DI FA S MP OV), 2022-11-14T10:53:39.113

**BRAUMAT – 3<sup>rd</sup> party support by certified partners**

**Top partners audited and certified as  
BRAUMAT/SISTAR Expert**

- Proven in several BRAUMAT/SISTAR projects
- Providing all needed services around BRAUMAT
- Consulting, Project management and Quality management in place

**Expert benefits:**  
**Continuously training and support by Siemens**  
**with exclusive and premium information**

**Find your BRAUMAT expert in our**  
**[Siemens Industry Partner Finder](#)**





# BRAUMAT & SISTAR

## What's new in V8.0 SP2

July 2022

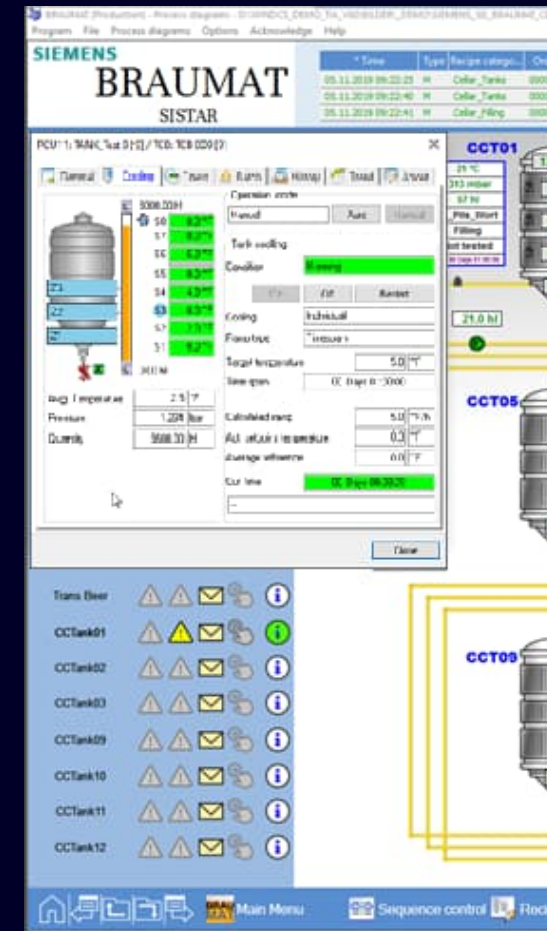
## BRAUMAT / SISTAR V8.0 ServicePack 2 Overview

BRAUMAT / SISTAR V8.0 is the **consequent next step** in the development of Process control for Food & Beverage and industries with similar requirements.

While **maintaining market proven** and **mature features** again several **new innovations** are being introduced to the system with newly released service pack 2.

With clear focus on further increased **reliability**, **flexibility** and **usability** service pack 2 follows the path to a more intuitive and efficient operation and is another step towards the **future of process control** in batch based operation.

Among others **new technical features** are now available like enhancement of possible hardware base as well as new possibilities in **usability of route control** and **improved connectivity to MES layer**.



# BRAUMAT/SISTAR V8 SP2

## Supported Automation & Operating Systems

### Supported Automation Systems (PLC)



#### ■ S7-1500

- CPU 1518-4 PN/DP <sup>1)</sup>
- CPU 1516-3 PN/DP <sup>1) 4)</sup>
- CPU 1518-4F PN/DP<sup>1)</sup>
- CPU 1516-3F PN/DP <sup>1) 4)</sup>
- CPU 1505S / 1505S F <sup>1) 4)</sup>
- CPU 1507S / 1507S F <sup>1)</sup>
- CPU 1508S / 1508S F <sup>1)</sup>

#### NEW:

- CPU 1517-3 PN/DP <sup>1) 5)</sup>
- CPU 1517-3F PN/DP <sup>1) 5)</sup>
- CPU 1518HF-4 PN <sup>3) 6) 7)</sup>

#### ■ S7-400 (preferential range)

- CPU 417-4 <sup>2)</sup>
- CPU 416-3 PN/DP <sup>2)</sup>
- CPU 416-3 <sup>2)</sup>

#### Notes:

- The full quantity structure cannot be used with all S7-400 CPU types
- More support for S7-400 PLCs and further details can be found in the product documentation

- 1) S7-1500 - FW V2.6 or higher
- 2) S7-400 - FW V5 or higher
- 3) S7-1518H - FW V2.9 or higher
- 4) reduced quantity structure: 40 Units
- 5) reduced quantity structure: 48 Units
- 6) reduced quantity structure: 64 Units
- 7) Route control and parametrizable cross-coupling not possible yet

### Supported Operating Systems

- **Windows 7**
  - Ultimate/Enterprise SP1 (64Bit)
- **Windows 10**
  - Enterprise 2015 LTSC (64Bit)
  - Enterprise 2016 LTSC (64Bit)
  - Enterprise LTSC 2019
- **Windows Server**
  - 2008 R2 SP1 Standard Edition (64 Bit)
  - 2012 R2 Standard Edition (64 Bit)
  - 2016 Standard / Datacenter Edition (64 Bit)
  - 2019 Standard/ Datacenter Edition (64 Bit)
- **Windows Embedded Standard 7 SP1 (32Bit)**

**Note:** Not all operating systems are released for every type of station (e.g. Server, Client, etc.), further details can be found in the product documentation

### Platforms for virtualization

- **VmWare ESX**
- **Microsoft Hyper-V**



## High available PLC

Higher availability of the production  
by support of S7-1518HF CPU <sup>1)</sup>



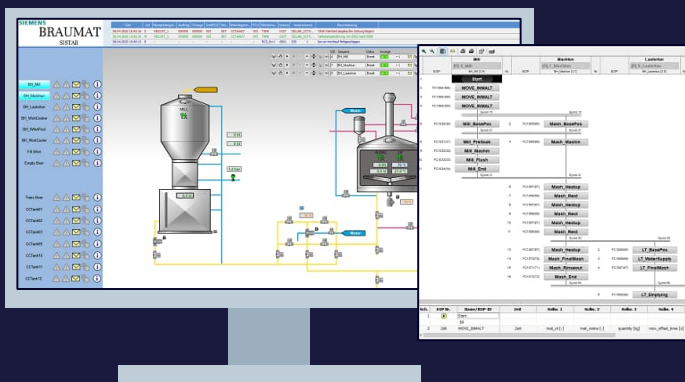
## Graphical route viewer

Graph view offers support for engineering &  
verification of complex RCS configurations



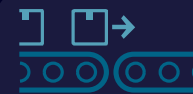
## Integrated connectivity to Opcenter Execution Process

Use Case: MES based creation of batches <sup>2)</sup>



## SISTAR & BRAUMAT V8.0 Service Pack 2

- 1) not included in SP2: RCS & parametrizable cross-PLC communication (planned to follow by next release)
- 2) 1<sup>st</sup> step of connectivity (further features planned to follow soon)
- 3) Feature in final test, planned final availability Q4 0222



## Conveyor control

Controlling and monitoring of conveyor lines  
for solid material transfers <sup>3)</sup>



## Higher flexibility for Lean

Introduction of smaller extension license  
(by +4 Units) for more smooth expansion

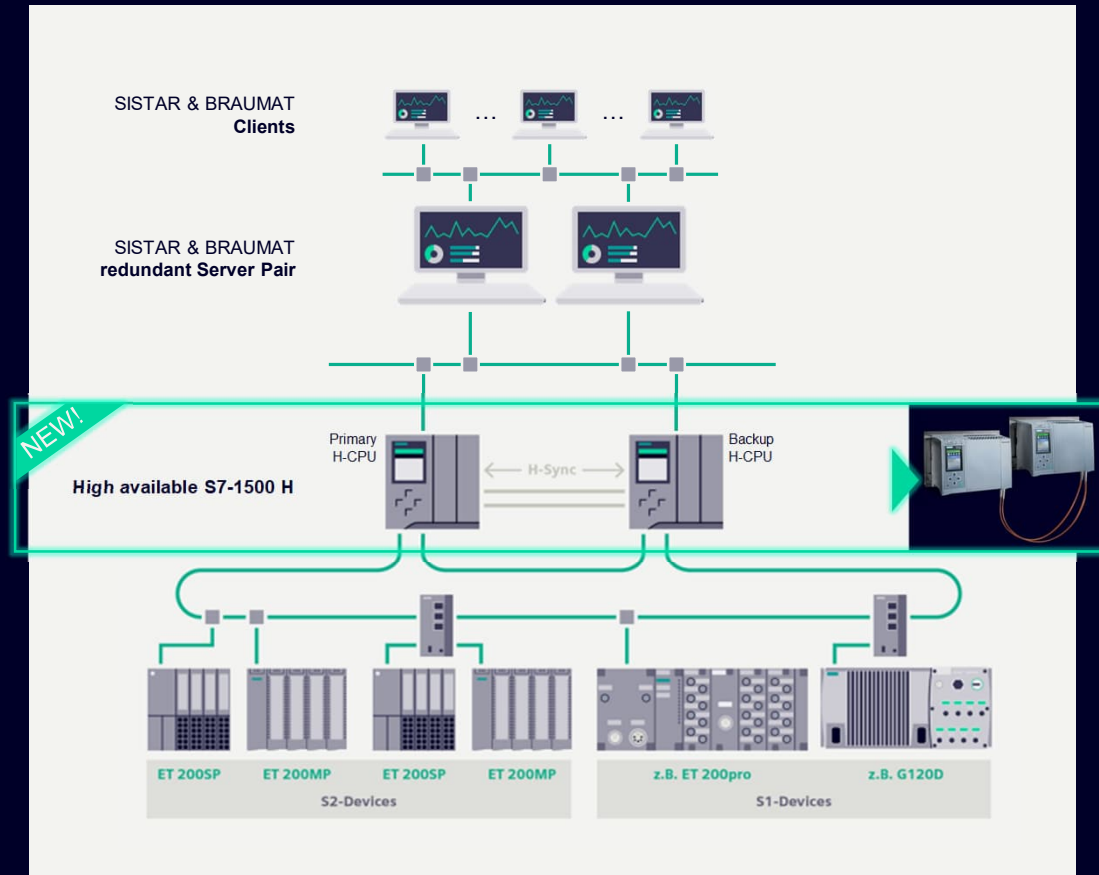


## Extended language support

Support of additional system languages:  
French, Polish, Portuguese



## BRAUMAT & SISTAR V8.0 SP2 Features to come in more detail



## Support of High available PLCs

### Benefits

Avoidance of plant downtimes leads to:

- + reduction of production losses
- + prevention of data & material losses
- + avoidance of damages
- + increased reputation

### Characteristics

- Support of S7-1518 HF CPU (with max. 64 Units)
- Synchronization via fiber-optic cable (max. ~10km)
- Hot-standby with fail-over time of approx. 50 msec
- Supported IO systems:  
SIMATIC 200SP and ET 200MP

### Note:

Not supported in SP2: H-CPU for RCS & parametrizable cross-PLC communication (planned for future release)

# BRAUMAT & SISTAR V8.0 SP2

## Features to come in more detail

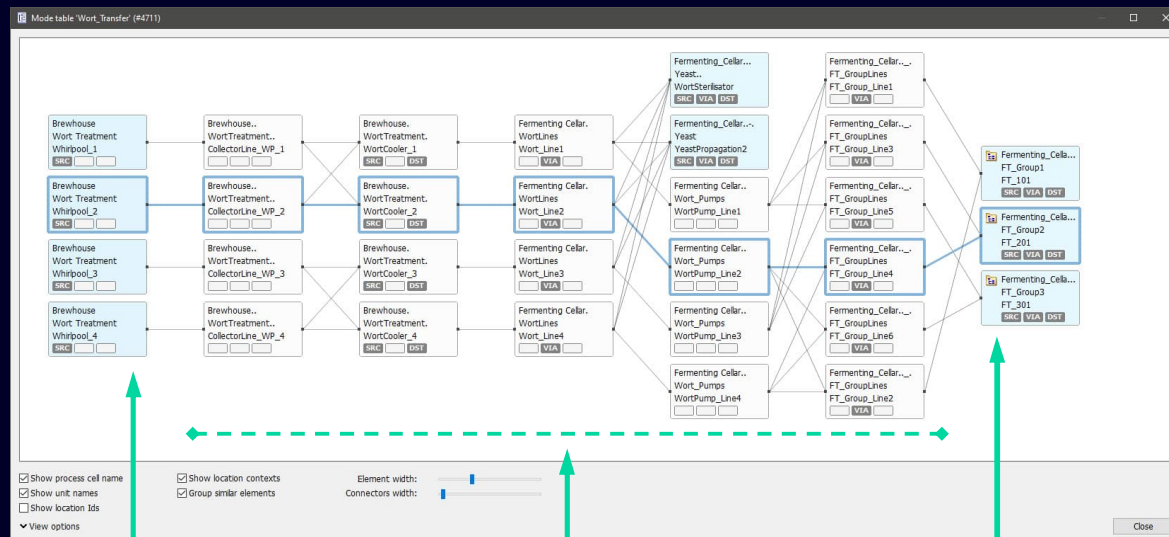
## Route Control System - Graphical Route viewer

### Benefits

Graphical route viewer offers support for engineering & verification of complex Route Control configurations

### Characteristics

- Representation of transfer routes as route graph showing: Source, Destination and Via nodes
- Allows manual tracing of reachable nodes and identification of possible routes to check the linking of source and destination nodes



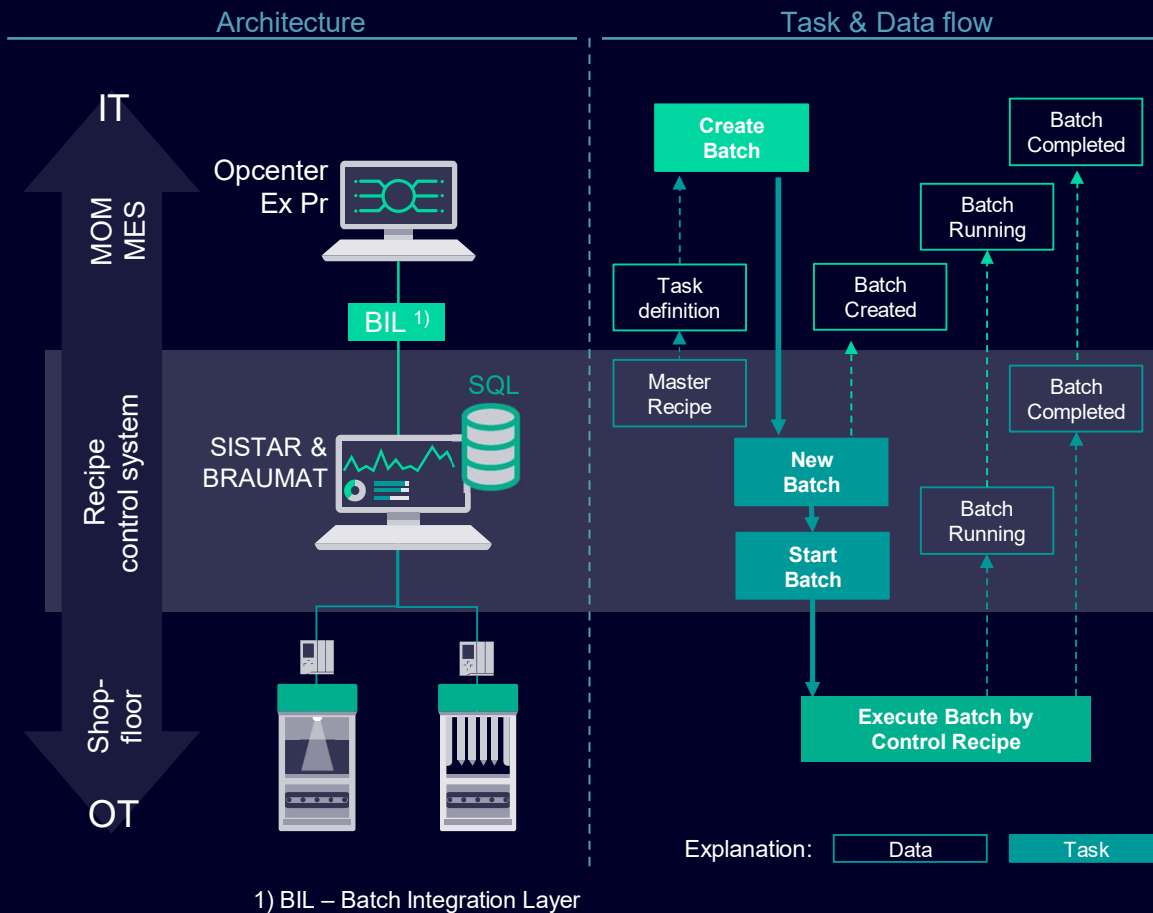
Sources

via

Destinations

# BRAUMAT & SISTAR V8.0 SP2

## Features to come in more detail



## Integrated connectivity to Opcenter Execution Process

### Benefits

Integrated connectivity to Opcenter Execution Process offers:

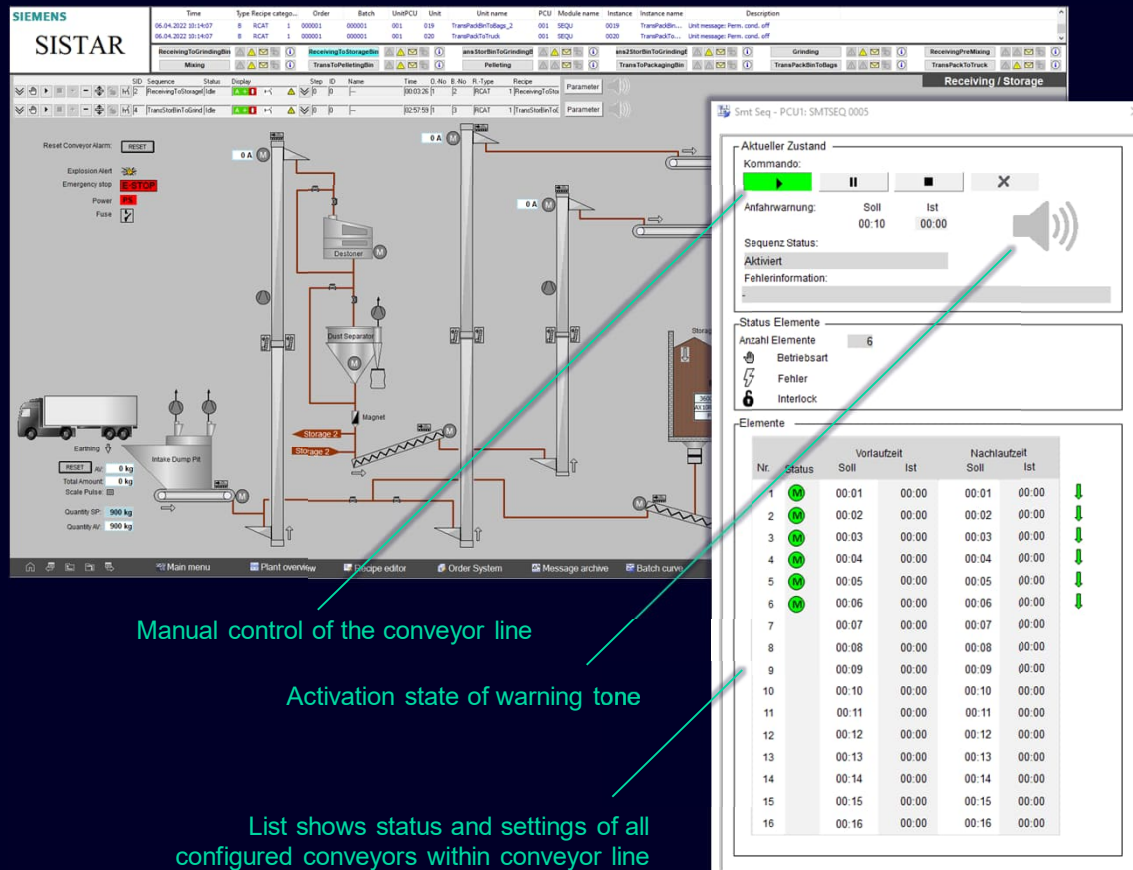
- Out-of-the-box interplay between IT and OT level
- Reduces integration effort and costs
- More robust and reliable connectivity

### Characteristics

- 1<sup>st</sup> step of connectivity to Opcenter Ex Pr offering basic use cases for creation of batches and exchanging of batch status information
- Features for covering additional uses cases will be delivered continuously in future releases

# BRAUMAT / SISTAR

## Features to come in more detail



## Conveyor control <sup>1)</sup>

### Benefits

- Pop-Up dialog for control and monitoring of conveyor lines for solid materials
- Allows sequential start-up and stop of conveyor lines
- Quick and easy overview of the operation state of all conveyors within a conveyor line

### Characteristics

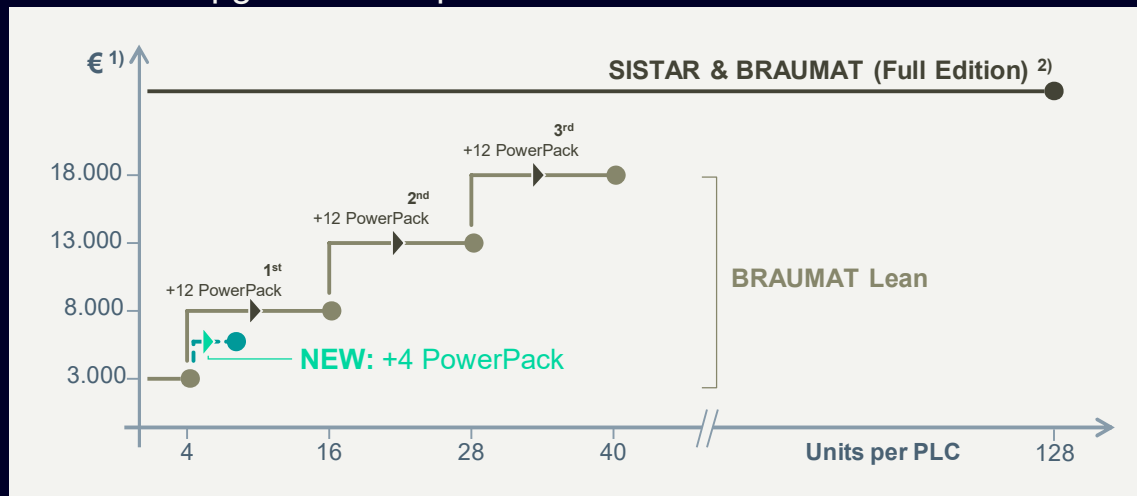
- Supports conveyor lines for solid materials (e.g. conveyor belt, screw conveyor, vertical conveyor, etc.)
- Allows setup of up to 16 interlinked conveyors a conveyor line
- For a sequential start-up and stop of the conveyor line each conveyor an individual pre-run and stop delay can be configured

1) Feature in final test environment, planned final availability in Q4 2022

# BRAUMAT & SISTAR V8.0 SP2

## Features to come in more detail

License & Upgrade concept:



1) List price (L1)

2) BRAUMAT/SISTAR (full edition): Price depends on individual configuration

## Higher flexibility for Lean concepts

### Benefits

Introduction of smaller extension license (by +4 Units) for more smooth expansion – especially for smaller configurations

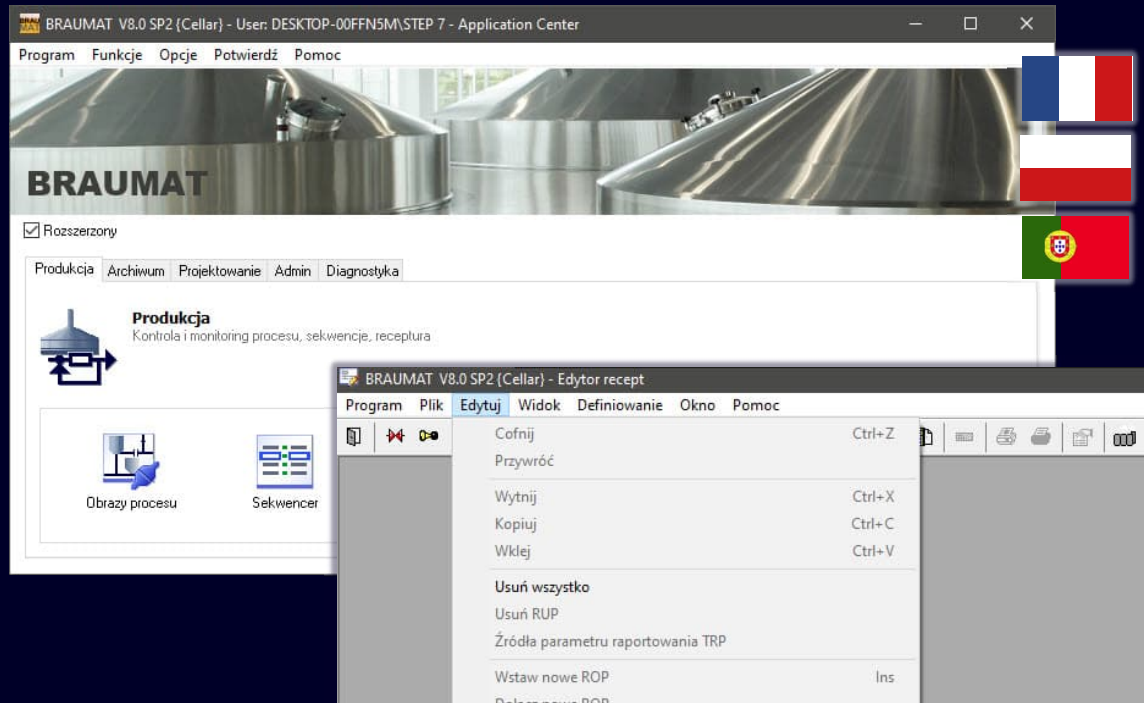
### Characteristics

- **Entry package:**
  - 4 units included with attractive entry price: 3.244€ <sup>1)</sup>
- **PowerPacks:**
  - PowerPack +12 Units:
    - extension by 12 units (price: 5.406€ <sup>1)</sup>)
  - PowerPack +4 Units:
    - extension by 4 units (price: 2.650€ <sup>1)</sup>)

NEW!

## BRAUMAT / Sistar

### Features to come in more detail



## New operator languages

### French, Polish, Portuguese

#### Benefits

- Support of additional operator system languages:
  - French
  - Polish
  - Portuguese

#### Characteristics

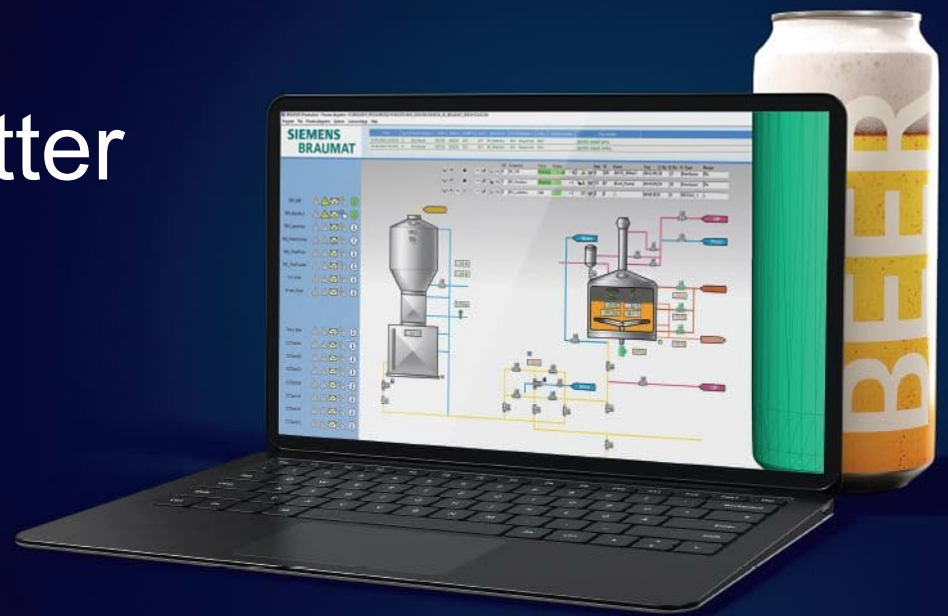
- Additional operator system languages by easy integration of language packs
- Additional operator language packs will be made available via free Siemens Industry Online Support (SIOS) Download



# BRAUMAT®

## Beer simply brewed better

[siemens.com/BRAUMAT](https://siemens.com/BRAUMAT)



## Disclaimer

© Siemens 2022

Subject to changes and errors. The information given in this document only contains general descriptions and/or performance features which may not always specifically reflect those described, or which may undergo modification in the course of further development of the products. The requested performance features are binding only when they are expressly agreed upon in the concluded contract.

All product designations may be trademarks or other rights of Siemens AG, its affiliated companies or other companies whose use by third parties for their own purposes could violate the rights of the respective owner.