



ENGWE
英格威

Explore a New Way





Table of Contents

01 Company
Introduction

02 Global Market

03 Brand Influence

04 Product Layout



01

Company Introduction

Company Introduction

Engwe Intelligent Technology Co., Ltd. (ENGWE) was founded in 2014 and is a leading company in the electric bicycle industry.

As a pioneer in the industry, we rely on our strong production and R&D capabilities, supported by a robust supply chain and an independent product testing laboratory, to integrate production, research, and sales. All our bicycle models are crafted by our creative team, with products sold to over 45 countries in Europe and North America, earning recognition from well-known industry media and the love of global users.

ENGWE is committed to driving meaningful innovation to promote healthier lifestyles. Inspired by automotive power principles, we design unique, high-quality, and cost-effective electric bicycles, offering more people an exceptional personalized sports experience and opening a new chapter in their lives.

We warmly welcome wholesalers, distributors, and dealers from around the world to join our partner network. By choosing ENGWE, you will collaborate with a passionate and excellence-driven team to create a healthier and brighter future.

We warmly welcome wholesalers, distributors, and dealers from around the world to join our partner network. By choosing ENGWE, you will collaborate with a passionate and excellence-driven team to create a healthier and brighter future.



› Corporate Culture

Mission

To make cycling a passion

Vision

A new frontier for green energy transportation

Values

01 Customer-Oriented

Customer satisfaction is our only pursuit.

02 Integrity and Openness

Uphold the "integrity" red line and build an open corporate culture.

03 Collaborative Win-Win

Innovate together, take responsibility, and achieve mutual benefit.

04 Pursuit of Excellence

Continuously innovate and improve, challenging industry limits.



› Supply Chain Strength



- Quality Comes from Professionalism



In China, ENGWE
owns **4** advanced
manufacturing centers.



The total area of the
manufacturing centers
reaches
110,000 m²,
and it can produce up to
55,000 electric
bicycles monthly.



We also have professional
testing equipment,
which can conduct tests
and professional
experiments on products.

› Supply Chain Strength



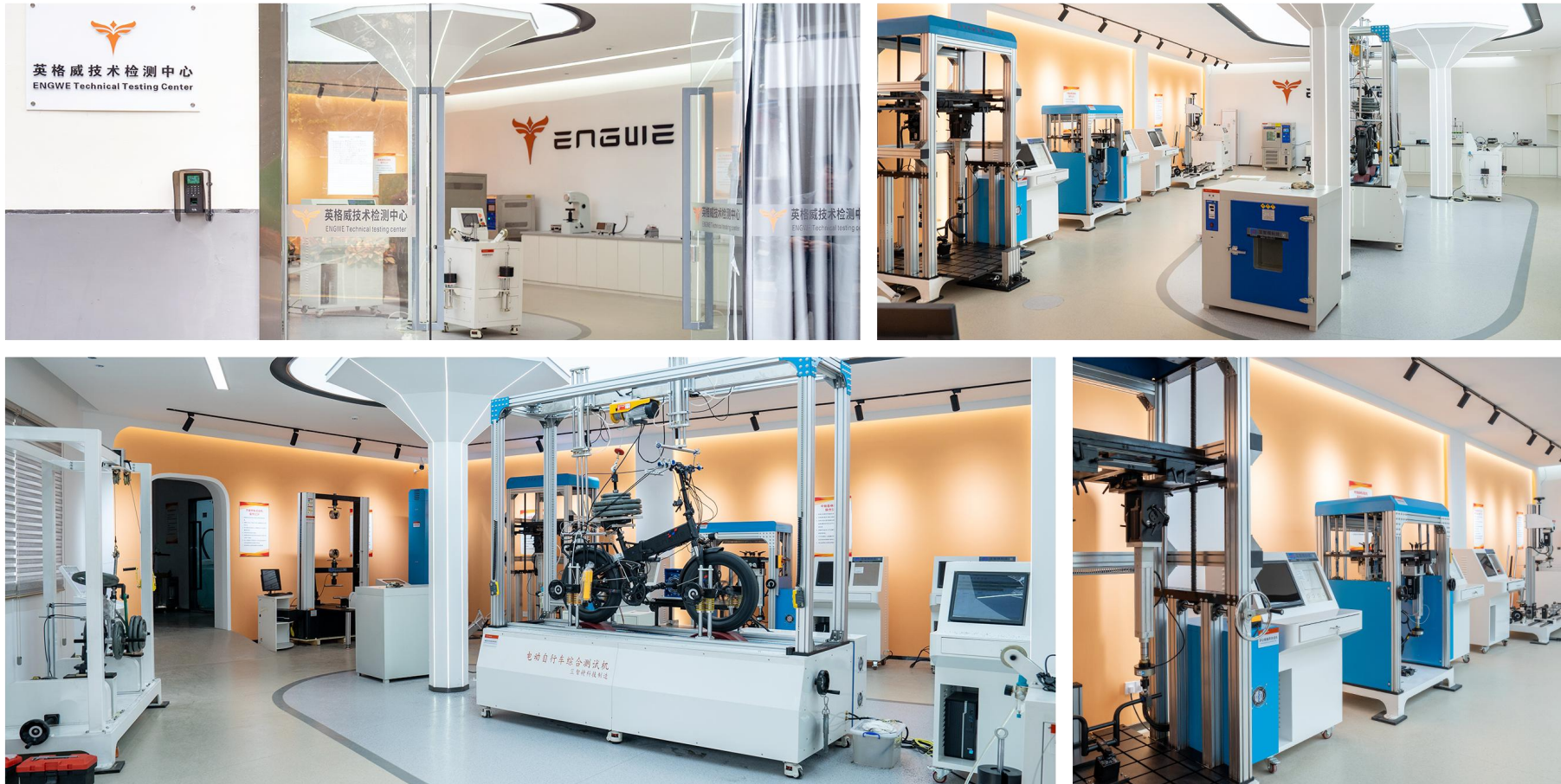
- In 2024, a new **10,000** m² factory was added, increasing monthly production capacity by **15%**.



> Innovation and Technology



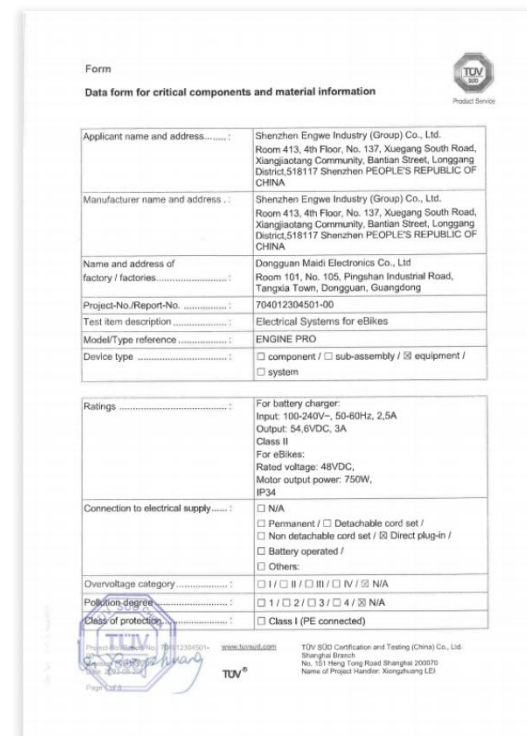
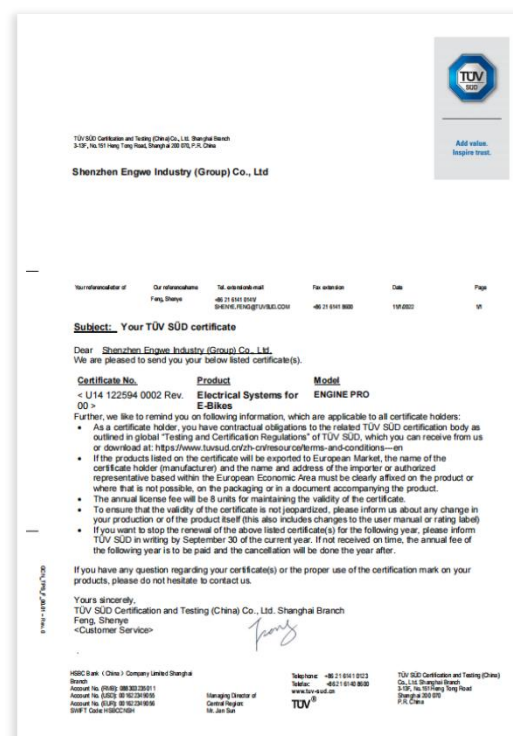
- To enable all products to meet the highest standards of industry quality, we have established a quality inspection laboratory. By integrating advanced equipment and technology, we are committed to continuously improving product quality. Through a series of strict tests and scientific experiments, we ensure that each product can withstand the test of time and the market.



› Innovation and Technology



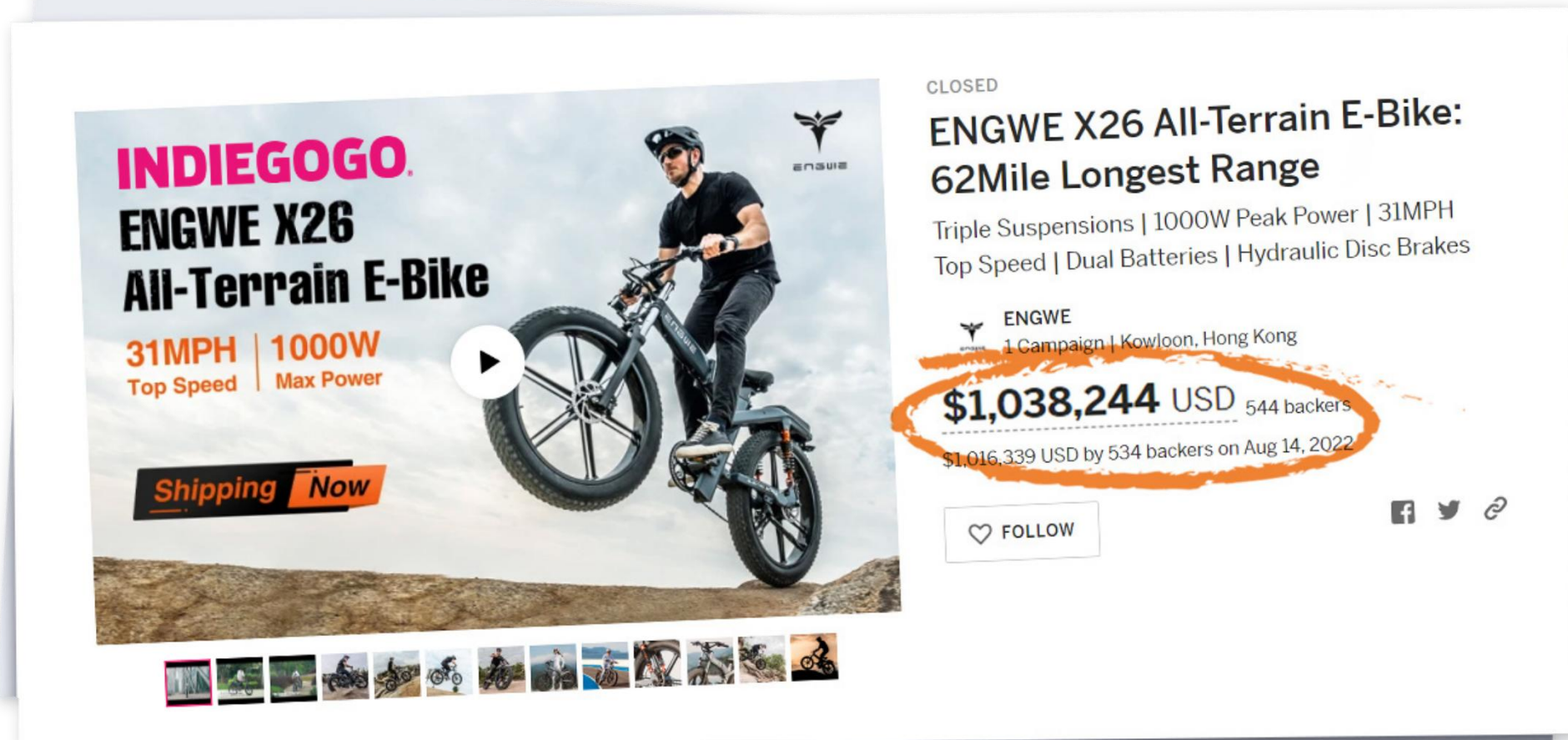
- As of 2025, our design and R&D team has a total of over **130** patents. Every year, our investment in research and development reaches up to **3,663,200** EUR.
- Our launched products all pass multiple international certification systems and have obtained multiple international certifications such as UL.



› Awards and Honors



- In the middle of 2022, ENGWE X26 all-terrain electric bicycle was launched on the crowdfunding platform Indiegogo. It raised millions of US dollars at once and won the Indiegogo Annual Million-Dollar Crowdfunding Award.





02

Global Market

› Globaler Markt



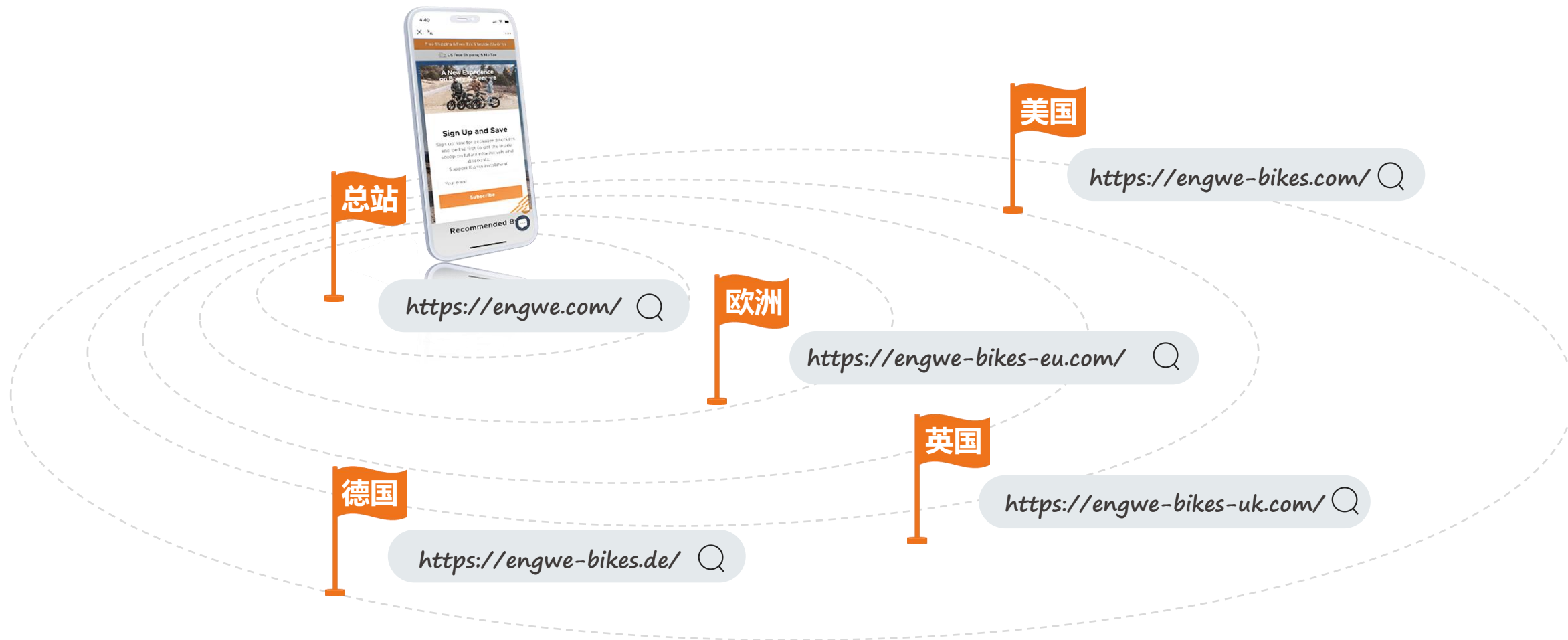
- Our products have successfully covered more than **45** countries and regions globally, providing over **2,000,000** riders with a pleasant cycling experience.
- Currently, our annual sales are about to exceed **190** million euros.
- We have set up **18** overseas warehouses and **450+** professional after-sales service centers in Europe, the United States, the United Kingdom, Canada, Australia, the Middle East, and other regions.



› Online Official Website



- In 2021, the ENGWE official website was launched. As of 2025, our official websites cover regions such as the European Union, the United Kingdom, and the United States.



› Online Distribution

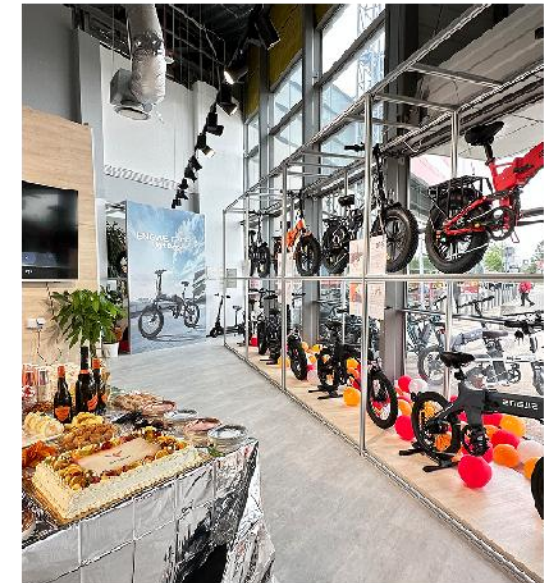
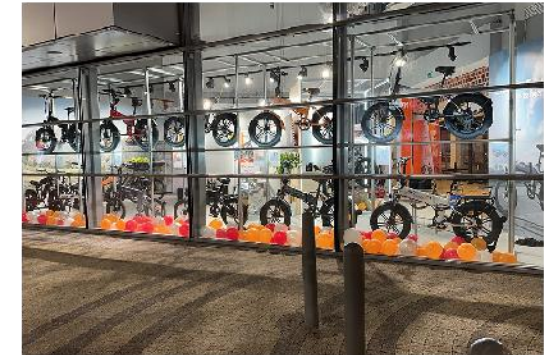


- As of 2025, we have more than **50** professional online distributors globally, covering the major cities of most countries.

Offline Distribution



- As of 2025, we have more than **400** offline cooperative retail stores globally and have opened 8 brand flagship stores in regions such as Poland, Ireland, Italy, and other areas.





03

Brand Influence

› Global Exhibitions



- In the past three years, we have participated in many world-renowned industry exhibitions such as EICMA, EUROBIKE, CES, and the Shanghai International Bicycle Show, attracting millions of visitors.



› Media Endorsement



- Globally, we maintain good and stable cooperative relationships with nearly 100 well-known media.

The logo for Forbes, consisting of the word "Forbes" in a black, serif font.	The logo for CNET, consisting of the word "CNET" in a bold, red, sans-serif font.	The logo for bikeradar, featuring a blue circular icon with a white fan-like shape inside, followed by the word "bikeradar" in a blue, sans-serif font.	The logo for yahoo!, consisting of the word "yahoo!" in a purple, sans-serif font.
The logo for cleanrider, featuring a blue circular icon with a white stylized 'C' inside, followed by the word "cleanrider" in a blue, sans-serif font.	The logo for digitaltrends, featuring a blue square icon with a white plus sign inside, followed by the word "digitaltrends" in a blue, sans-serif font.	The logo for electrek, consisting of the word "electrek" in a blue, sans-serif font.	The logo for road.cc, consisting of the text "road.cc" in a bold, dark blue, sans-serif font, with the tagline "pedal powered" in a smaller, lighter blue font below it.
The logo for BIKERUMOR!, consisting of the word "BIKERUMOR!" in a bold, black, sans-serif font, with an exclamation mark.	The logo for The Verge, consisting of the words "The Verge" in a purple, sans-serif font.	The logo for GEARJUNKIE, consisting of the word "GEARJUNKIE" in a bold, black, sans-serif font, with a green outline around the letters.	The logo for THE VERGE, consisting of the words "THE VERGE" in a bold, black, sans-serif font.
The logo for BIKE RIDE, featuring a black silhouette of a person riding a bicycle, with the words "BIKE RIDE" in a bold, black, sans-serif font below it.	The logo for Outdoor GEAR LAB, featuring a black silhouette of a mountain peak inside a circle, followed by the words "Outdoor GEAR LAB" in a bold, black, sans-serif font.	The logo for The Telegraph, consisting of the words "The Telegraph" in a black, serif font.	The logo for THE inertia, featuring a blue circular icon with a white stylized 'i' inside, followed by the words "THE inertia" in a blue, sans-serif font.

> KOL Recommendation



- As of 2025, the number of well-known KOLs with good and stable cooperative relationships with us across all networks has exceeded **400**.



Public Welfare Support



- Engwe continuously pays attention to public welfare information, actively participates in various public welfare activities, and uses technology and innovation to contribute to a better future.



Donated Engine Pro 2.0 as a means of transportation during the flood rescue in Valencia, Spain, and bore the material costs, helping with the reconstruction of the disaster area with practical actions and fulfilling corporate social responsibility.



Sponsored ENGWE products for the filming of BBC's public welfare short film It's My Shout, supporting the growth of new-generation film and television talents with practical actions, and injecting more possibilities into creative expression and community cultural development.



Sponsored the public welfare toy donation activity, using Engine Pro 2.0 as the lottery grand prize, helping children in the Sonoita community receive precious gifts and a happy childhood during the holidays, transmitting warmth and hope.

> Brand Service



- We provide full-link brand services. Based on professional pre-sales consultation, excellent product experience, convenient purchase process, and efficient after-sales service, we offer customers personalized and sustainable services.





04

Product Layout

Product Layout



- Our products are divided into multiple series. The corresponding letters together form the two words "EXPLORE" and "MY", representing the love for exploration and self-transcendence.



Balanced
Performance Series



Urban
Cycling Series



Folding
Portable Series



Balanced
Performance Series



Scooter
Model Series

E

P

O

E

Y

X

L

R

M

Strongest
Performance Series

Comfort
Function Series

Off-Road
Specialization Series

Electric Motorcycle
Style Series



› Product Layout



MapFour N1 Pro

Most Powerful Mid-drive Carbon City E-bike



250W
Mid-drive Motor



80Nm
Super Power



1.5h Fast
Charging



Anti-theft
Modular Design



Carbon
Fiber Frame



Detachable
Battery

Product Layout



ENGWE LE20

Super Range Cargo E-bike



922Wh + 922Wh
Dual Battery System



1300W
Motor Peak Power



Torque
Sensor



Hydraulic
Disc Brakes



20 x 3.0 Inch
Puncture-resistant Tires



200KG
Cargo Weight

› Product Layout



ENGWE M20 2.0

Double Is Better Than Single



52V 15.6Ah
Dual Battery System



Brighter
and Safer



1200W
Motor Peak Power



45KM/H
Maximum Speed



Dual Shock
Absorption



7-speed
Shifting System



Product Layout



ENGWE L20 Boost

Power meets Comfort



75Nm
Enhancement Button



Torque Sensor



48V 13Ah
Detachable Lithium Battery



250W
Hub Motor



7-speed
Shifting System



20 x 4.0 Inch
Fat Tire



Product Layout



ENGWE X26

All-Terrain Performance Beast



8-speed
Shifting System



48V 19.2Ah + 48V 10Ah
Dual Battery System



1200W Motor
Peak Power



Hydraulic
Disc Brakes



3x
Triple Shock
Absorption System



26 x 4.0 Inch
Fat Tire

› Product Layout



ENGWE Engine Pro 2.0

Your Best Wildness Companion



52V 16Ah
Lithium Battery



1200W
Motor Peak Power



Hydraulic
Disc Brakes



Full Shock
Absorption System



8-speed
Shifting System



3-Step
Foldable Frame





ENGUIE
英格威

Thank you