



# **MORRIS**

## **Instruction Manual**

### **Stand & Table fan**

### **MFS-162226 with ION function**



**Read carefully these instructions and store them for future reference**

## SAFETY INSTRUCTIONS

When using electrical appliances, basic precautions should always be followed to reduce the risk of fire, electric shock and injury to persons, including the followings:

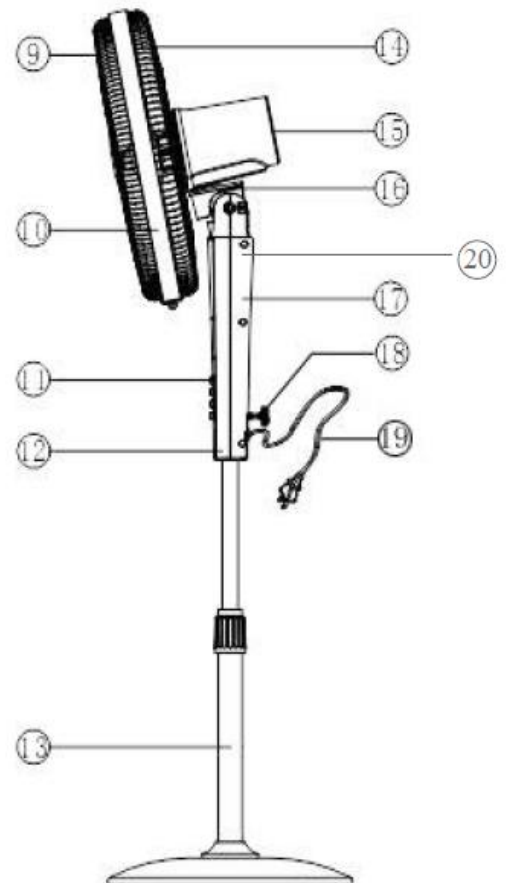
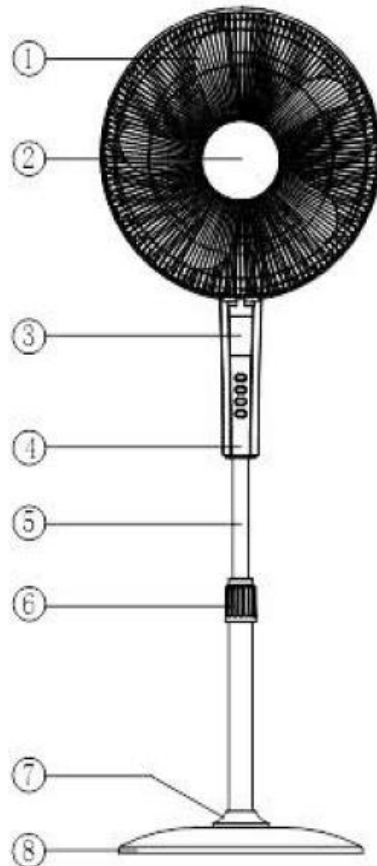
1. To prevent fire or shock hazard, **DO NOT** expose this appliance to rain or moisture.
2. Dangerous high voltages are present inside this enclosure. To avoid electric shock, **DO NOT** open the cabinet, refer servicing to qualified personnel only.
3. This appliance is intended for household use only and not for commercial, industrial or outdoor use. Other use not recommended may cause fire, electric shock or injury.
4. Ensure the fan is not placed near drapes, curtains, or any objects that may be drawn into the fan.
5. To protect against fire, electrical shock and injury to persons, do not immerse the unit, plug or cord in water or spray it with liquids.
6. The apparatus shall not be exposed to dripping or splashing and no objects filled with liquids, such as vases, shall be placed on the product.
7. No naked flames sources, such as candles, should be placed on the product.
8. Ventilation should not be impeded by covering the ventilation openings. Slots and opening are provided for ventilation to ensure reliable operation of the product and to protect it from overheating.
9. Care required with the use of this apparatus in tropical climates. Do not use the appliance to temperatures over 40 °C.
10. Place the fan on a stable level and dry surface when operating to avoid overturning.
11. Only connect to a suitably AC 220-240V~50Hz mains socket.
12. Do not operate the fan in the presence of explosive and/ or flammable fumes. Do not place the fan or any parts near an open flame, cooking or other heating appliance.
13. Do not operate the fan with a damaged cord or plug, after a malfunction or if it is dropped or damaged in any manner.
14. If the supply cord is damaged it must be replaced by the manufacturer, its service agent or similarly qualified persons in order to avoid a hazard
15. Do not operate the fan without the fan grilles properly in place.
16. Do not place the fan close to an open window. Rain splashing on the fan could cause an electric shock hazard.
17. Do not let the power cord hang over the edge of a table or counter or let it touch any hot surfaces.
18. Do not insert or allow foreign objects to enter the grille openings as this may cause damage to the appliance.
19. Do not use the fan if grille becomes damaged or loose.
20. This appliance can be used by children aged from 8 years and above and persons with reduced physical, sensory or mental capabilities or lack of experience and knowledge if they have been given supervision or instruction concerning the use of the appliance in a safe way and understand the hazards involved. Children shall not play with the appliance. Cleaning and user maintenance shall not be made by children without supervision.
21. Children of less than 3 years should be kept away unless continuously supervised. Children aged from 3 years and less than 8 years shall only switch on/off the appliance provided that it has been placed or installed in its intended normal operating position and they have been given supervision or instruction concerning use of the appliance in a safe way and

understand the hazards involved. Children aged from 3 years and less than 8 years shall not plug in, regulate and clean the appliance or perform user maintenance.

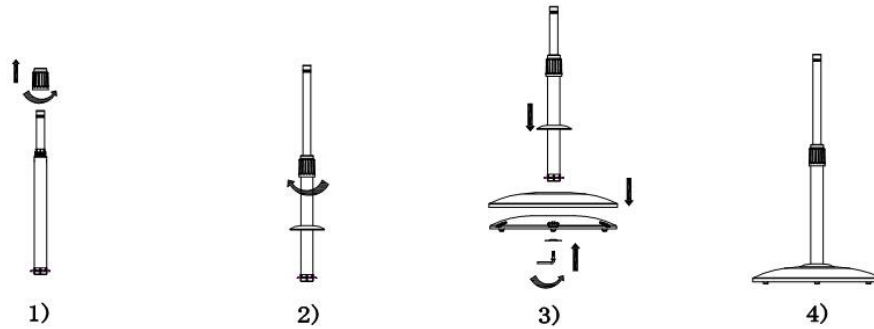
22. Switch the fan OFF and unplug it from the outlet when it is not in use, when moving fan from one location to another and before cleaning.
23. To disconnect, grip the plug and pull it from the wall outlet. Never pull by the cord.
24. Do not attempt to repair, disassemble or modify the appliance. There are no user-serviceable parts inside. Refer all servicing to qualified service personnel

## Product

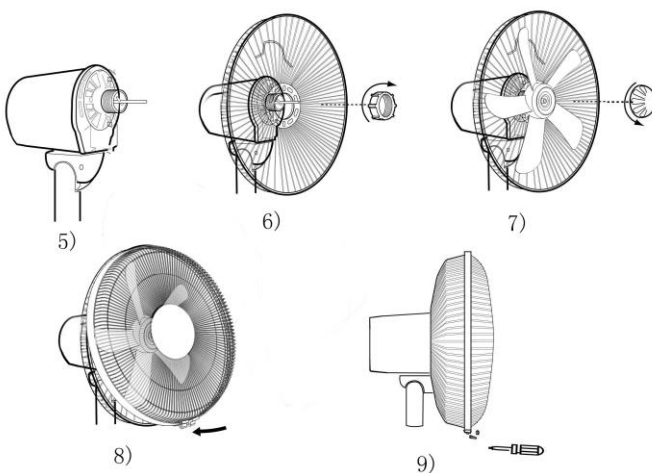
1. Blade
2. Guard Hub
3. Transparency Cover
4. Decorative cover
5. Inner tube
6. Height adjustment nut
7. Base Cover
8. Base
9. Front Grill
10. Grille Hoop
11. Switch
12. Front Switch Box
13. Outer tube
14. Rear Grill
15. Rear Motor Cover
16. Flexed Rack
17. Rear Switch Box
18. Screw
19. Power Cord
20. ION



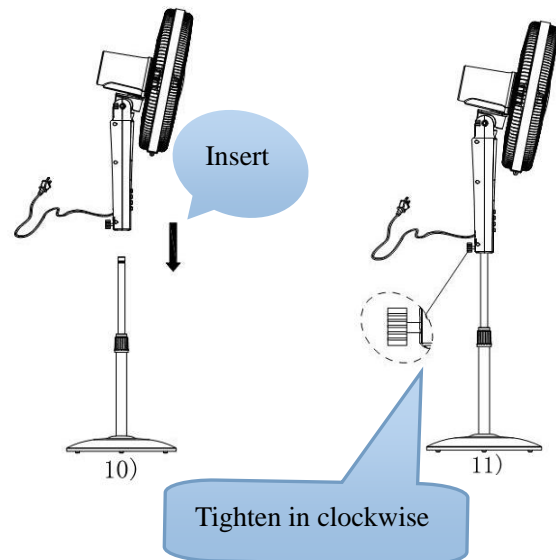
## Installation Instructions



### Installation Steps of Column and Base



### Installation Steps of Fan Head



- Read all instructions carefully before use.
- Keep the instructions manual for future reference.

### Stand fan

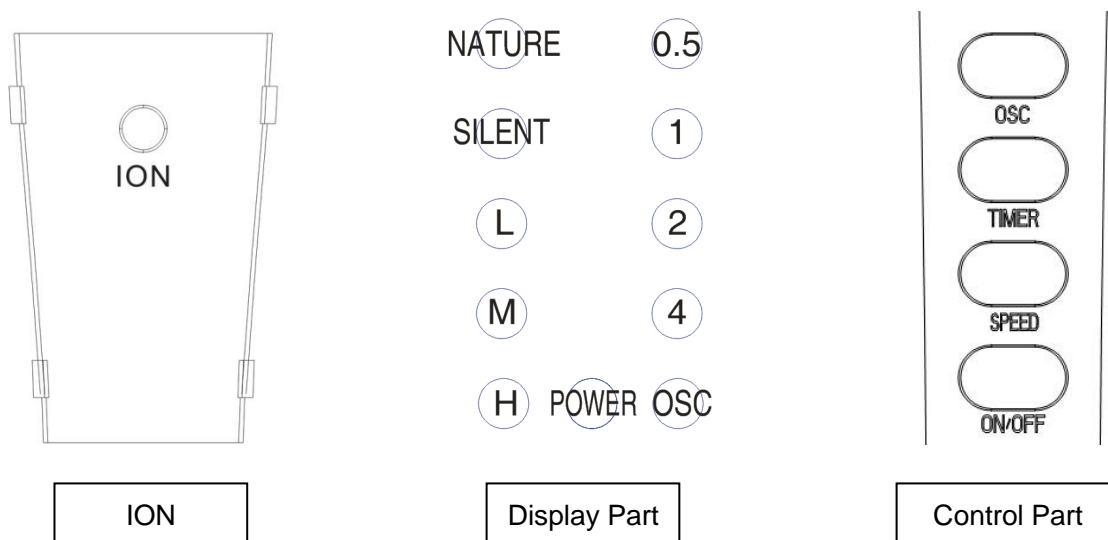
1. Unscrew the height adjustment nut and remove
2. Put the cover of the base through the outer tube and screw the height adjustment nut
3. Put the outer tube on the base and screw under the base to secure
4. Adjust the height screwing the height adjustment nut to the outer tube
5. Unscrew the nut placed in front of the motor housing
6. Place the rear grille (with the handle upwards) onto the motor housing, fixing its pins. Screw with the nut and tighten.
7. Insert the blade onto the motor shaft and tighten the blade's nut as it is shown in below picture.
8. Place the front grill making sure that the holes of the grills are aligned.
9. Tighten the screw to secure both grills.
10. Insert the fan's body onto the inner tube.
11. Tighten the body's screw (18) to secure the body to the inner tube.

### Table fan

1. Remove the screw (18) from the fan's body
2. Place the fan's body on the table base and screw with the 3 screws.

## Operating Instructions

- Place the fan on a firm level surface. Connect the power cord into a 220-240V /50HZ electrical outlet.



- **ON/OFF:** Press the ON/OFF button. The fan operates in the low speed and ION function starts automatically. Press again to turn the fan OFF.
- **FAN SPEED:** Press the SPEED button as follows: "L" is for low speed, "M" is for middle speed, "H" is for high speed. Press again for Silent speed.
- **TIMER:** Press TIMER button to activate timer sequence from 0.5hrs (30 MIN.) to 7.5hrs. Each time this button is pressed, the timer goes up by 0.5hrs, 1hrs, 2hrs and 4hrs increments up to 7.5 hrs.
- **WIND MODE:** Press the MODE button select between nature wind or normal wind. Please note that this function can only be used by remote control.
- **OSC MODE:** Press OSC button to turn ON the oscillation function.
- **Tilt adjustment:** turn off the fan and wait until rotation has completely stop. Air flow can be adjusted to up or down, moving the fan's head up or down.
- **Ionizer function:** is activated automatically when the fan is turned ON.

### **Cleaning and maintenance**

In order to guarantee results, clean the blades and front / rear grille once a month. Follow the below instructions:

1. Use in dry place, free of excessive humidity and water.
2. Keep fan clean, wipe away dirt with a clean cloth.
3. Do not use spirits or thinner to clean fan.
4. Before putting the fan in storage, clean thoroughly then cover with a plastic bag and store in a dry place.

### **NOTICE ABOUT RECYCLING**



Your product is designed and manufactured with high quality materials and components which can be recycled and reused. This symbol means that electrical and electronic equipment, at their end-of-life, should be disposed of separately from your household waste. Please dispose of this equipment at your local community waste collection/ recycling centre. In the European Union there are separate collection systems for used electrical and electronic products.

Please help us to conserve the environment we live in!

### **DECLARATION OF CONFORMITY**

This product complies with the requirements of Directives:

EMC Directive: 14/30/EU

Low Voltage Directive: 14/35/EU

RoHS Directive 11/65/EU & 15/863/EU

CE Marking: 93 / 68 / EEC

The detailed declaration of conformity can be found at [www.morris.gr](http://www.morris.gr)



### **EXCLUSIVE DISTRIBUTOR IN GREECE**

Kalliopi Karyda & Co Lp.

87A, 17th November Str. - P.C. 55535

Pylaia - Thessaloniki - Greece

T: +302316006600 | F: +302316006650

[www.morris.gr](http://www.morris.gr)