

HANGOUT DOCK 7' & 10' PRODUCT MANUAL

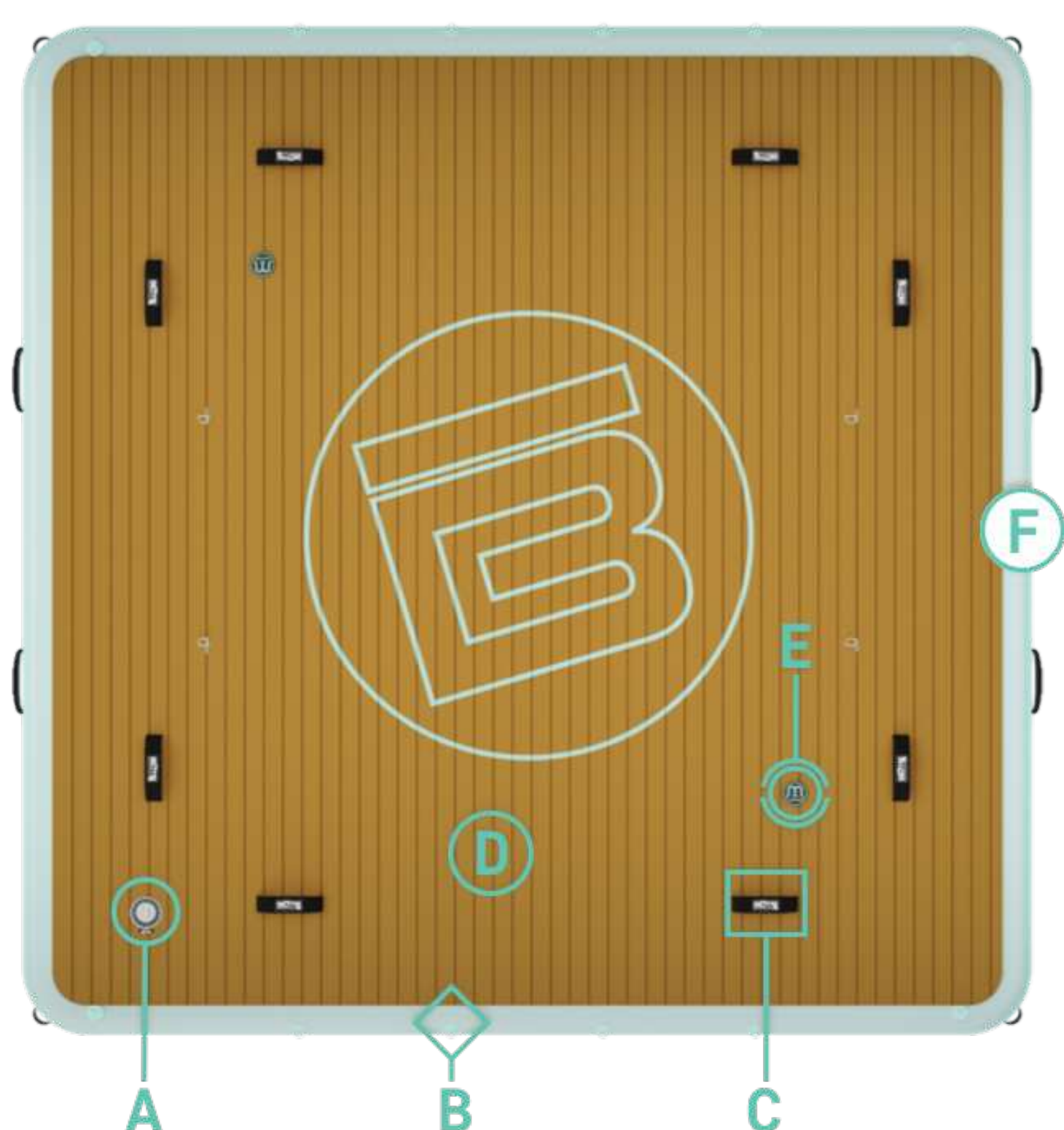
HANGOUT DOCKS – GETTING STARTED GUIDE

The BOTE Dock is a floating inflatable dock + swim platform. Simple. It's highly stable, incredibly durable construction makes the BOTE dock one of the most versatile products we make. Take it to the lake house, float it off the beach, use it as a yoga platform, lash a few together to increase your real estate. The possibilities are endless.

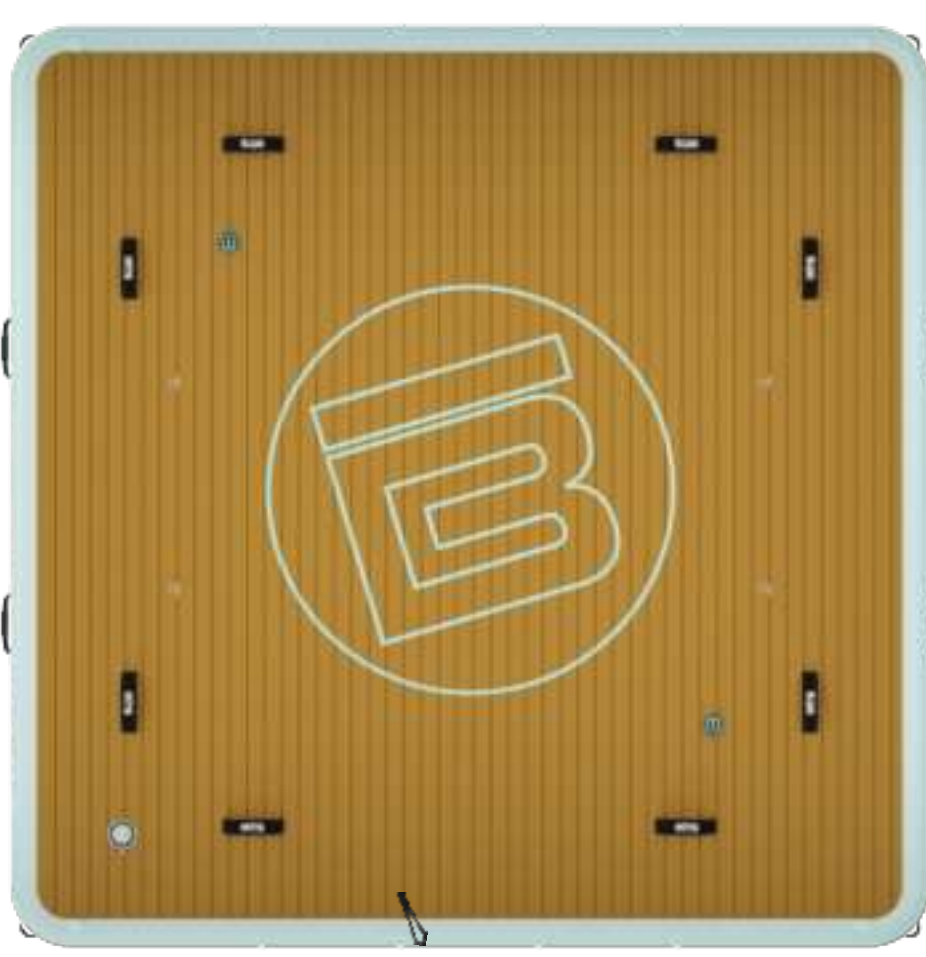
DOCK FEATURES

- A Inflate/Deflate Port
- B Tie Downs / D-Rings
- C Soft Grab Handles
- D BVA Foam Deck Pad
- E MAGNEPOD™ Magnetic Bases
- F Fusion Composite Drop-Stitch PVC

HANGOUT DOCK 10 SHOWN



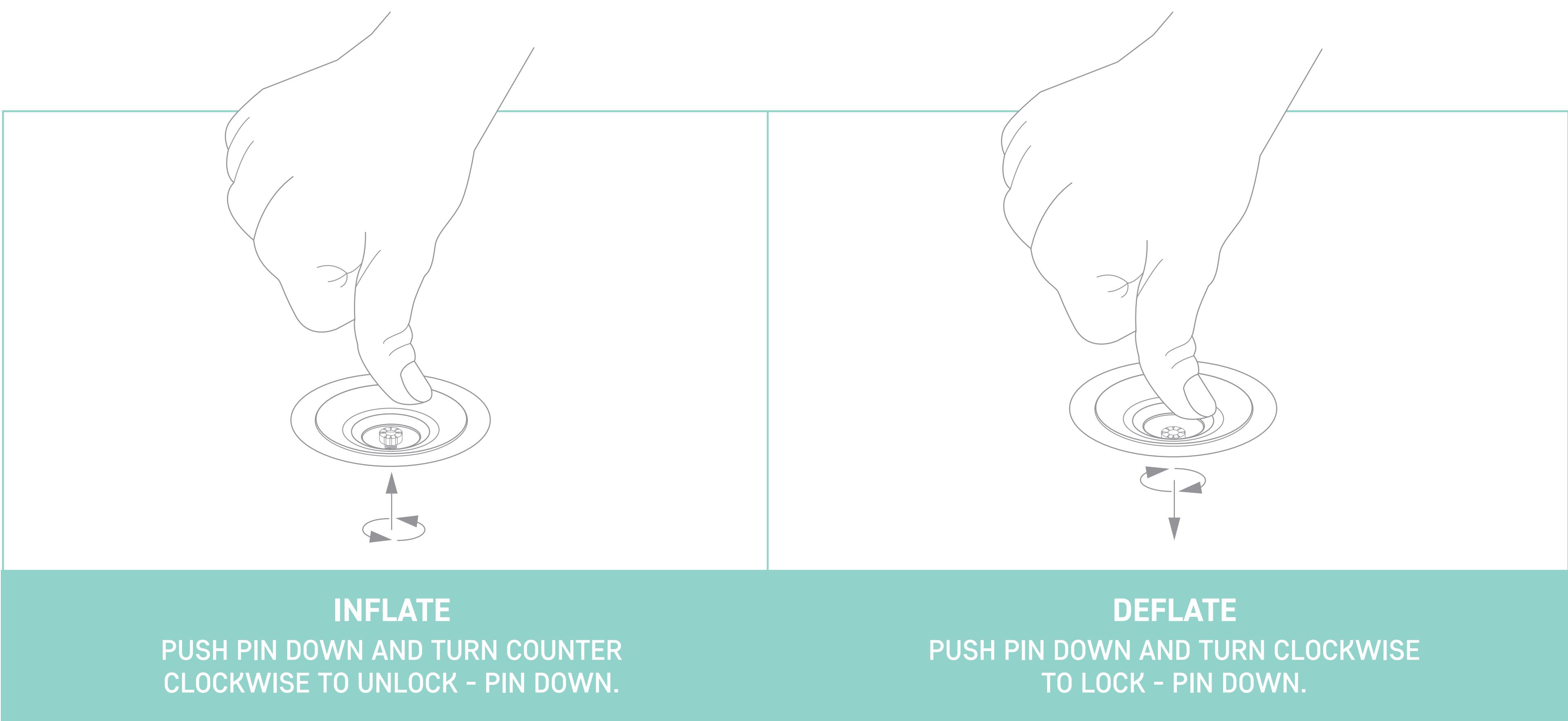
WHATS INCLUDED?



- One (1) Inflatable Dock (7' or 10')
- One (1) Aero Hand Pump
- One (1) Carry Sling (7' or 10")
- One (1) Aero Repair Kit

INFLATING AND DEFLATING

Inflating and deflating the Hangout Dock is simple. First remove the folded Hangout Dock from the burrito carry sling, unfold, attach the pump hose to the inflation valve and fill 'er up. The Dock 7' and Dock 10' perform best when inflated to 6-8 PSI. When you are ready to pack it up, do everything in reverse



CARE AND STORAGE

Always store your Hangout Docks in a cool, dry place or shady area out of reach of direct sunlight to avoid bursting or fading of colors. The sun both weakens the material and increases the inflated air pressure beyond its designed limits. If you must leave your Hangout Docks out of the water and in direct sunlight, reduce the inflated air pressure until the Hangout Dock is compressible by hand.

The Hangout Dock 7' and 10' have recommended inflation of 6-8 PSI.



HOW TO FOLD

- When you are finished with your Hangout Dock, make sure to clean off any dirt, sand or salt water with fresh water and allow the Hangout Dock to dry.
- Begin deflating by removing the inflate/deflate port cap and pressing the push pin down until you can turn it clockwise – locking it to the open position.
- Remove excess air with a pump in deflate mode.
- Fold in half.
- Fold in half again.
- Begin rolling from one short side to the other.
- Finally, place your rolled Hangout Dock into the burrito carry sling for transportation and storage.



2 YEAR LIMITED WARRANTY

This product includes a 2 Year Limited Warranty. Warranty registration is required to activate coverage. For full details on what's covered and how to register your product, please visit our Warranty Information page.

If you purchased the product directly from BOTE or a BOTE Retail Store, complete the online warranty claim form and await further instruction. Please visit www.boteboard.com/support/warranty to read the complete BOTE Warranty before using your new Hangout Dock. The Warranty Registration Form should be completed online within 30 days of original purchase.

WARNING

This is not a toy. Adult supervision is required.

- This is not a lifesaving device.
- Always wear a USCG approved Type III PFD when using this product.
- This product should never be towed.
- Never use this product in the surf zone or high rushing water.
- Do not swim under platform.
- Do not dive from platform.
 - Failure to comply could lead to injury or death.