

NOCO BOOST[®] X[™]

GBX45



DANGER

User Guide & Warranty



READ AND UNDERSTAND ALL SAFETY INFORMATION BEFORE USING THIS PRODUCT. Failure to follow these safety instructions may result in **ELECTRICAL SHOCK, EXPLOSION, FIRE**, which may result in a **SERIOUS INJURY, DEATH, or PROPERTY DAMAGE.**



Electrical Shock. Product is an electrical device that can shock and cause serious injury. Do not cut power cords. Do not submerge in water or get wet.



Explosion. Unmonitored, incompatible, or damaged batteries can explode if used with product. Do not leave product unattended while in use. Do not attempt to jump start a damaged or frozen battery. Use product only with batteries of recommended voltage. Operate product in well ventilated areas.



Fire. Product is an electrical device that emits heat and is capable of causing burns. Do not cover product. Do not smoke or use any source of electrical spark or fire when operating product. Keep product away from combustible materials.



Eye Injury. Wear eye protection when operating product. Batteries can explode and cause flying debris. Battery acid can cause eye and skin irritation. In the case of contamination of eyes or skin, flush affected area with running clean water and contact poison control immediately.



Explosive Gases. Working in the vicinity of a lead-acid is dangerous. Batteries generate explosive gases during normal battery operation. To reduce risk of battery explosion, follow all safety information instructions and those published by the battery manufacturer and manufacturer of any equipment intended to be used in the vicinity of battery. Review precautionary markings on these products and on engine.



For more information and
support visit:

www.no.co/support

Important Safety Warnings

CAUTION:

Manual Override Mode disables all safety measures. When used improperly and/or against our recommended use, it may result in injury or death and will void your warranty. Risk of fire, explosion, and burns. Do not disassemble, crush, heat above 60°C (140°F) or incinerate. This device is intended for temporary use outdoors and reasonable care should be exercised when using this device in wet conditions.

WARNING:

Do not overcharge the internal battery. See Instruction Manual. Do not smoke, strike a match, or cause a spark in the vicinity of the power pack. Only charge the internal battery in a well ventilated area when not in use.

CAUTION:

Risk of Injury To Persons. Do not use this product if the power cord or the battery cables are damaged in any way. This device is not intended for use in a commercial repair facility. This device is intended to be stored indoors when not in use. This device shall not be stored or left outdoors when not in use.

Proposition 65. WARNING: This product can expose you to chemicals including lead and exhaust fumes, which are known to the State of California to cause cancer and birth defects or other reproductive harm. For more information go to www.P65Warnings.ca.gov. **Personal Precaution.** Only use product as intended. Someone should be within range of your voice or close enough to come to your aid in case of emergency. Have a supply of clean water and soap nearby in the case of battery acid contamination. Wear complete eye protection and protective clothing while working near a battery. Always wash hands after handling batteries and related materials. Do not handle or wear any metal objects when working with batteries including; tools, watches or jewelry. If metal is dropped onto battery, it may spark or create a short circuit resulting in electrical shock, fire, explosion which may result in injury, death or property damage. **Minors.** If the product is intended by «Purchaser» to be used by a minor, purchasing adult agrees to provide detailed instructions and warnings to any minor prior to use. Failure to do so is the sole responsibility of the «Purchaser,» who agrees to indemnify NOCO for any unintended use or misuse by a minor. **Choking Hazard.** Accessories may present a choking hazard to children. Do not leave children unattended with product or any accessory. The product is not a toy. **Handling.** Handle product with care. The product can become damaged if impacted. Do not use a damaged product, including, but not limited to, cracks to the casing or damaged cables. Do not use product with a damaged power cord. Humidity and liquids may damage product. Do not handle product or any electrical components near any liquid. Store and operate product in dry locations. Do not operate product if it becomes wet. If product is already operating and becomes wet, disconnect it from the battery and discontinue use immediately. Do not disconnect the product by pulling on the cables. Caution: Hot surface, Wait for the unit to cool down before handling. **Modifications.** Do not attempt to alter, modify or repair any part of the product. Disassembling product may cause injury, death or damage to property. If product becomes damaged, malfunctions or comes in contact with any liquid, discontinue use, and contact NOCO. Any modifications to the product will void your

warranty. Changes or modifications not expressly approved by the party responsible for compliance could void the user's authority to operate this device.

Accessories. This product is only approved for use with NOCO accessories. NOCO is not responsible for user safety or damage when using accessories not approved by NOCO.

Location. Prevent battery acid from coming in contact with the product. Do not operate the product in a closed-in area or an area with restricted ventilation. Do not set a battery on top of product. Position cable leads to avoid accidental damage by moving vehicle parts (including hoods and doors), moving engine parts (including fan blades, belts, and pulleys), or what could become a hazard that may cause injury or death.

Operating Temperature. This product is designed to work in ambient temperatures between -20° C to 50° C. Do not operate outside of temperature ranges. Do not jump start a frozen battery. Discontinue use of product immediately if the battery becomes excessively warm.

Storage. Do not use or store your product in areas with high concentrations of dust or airborne materials. Store your product on flat, secure surfaces so it's not prone to falling. Store your product in a dry location. The storage temperature is -20°C to +50°C (0°C ~ +25°C daily average). Never exceed 80°C under any condition.

Compatibility. The product is only compatible with 12-volt lead-acid batteries only. Do not attempt to use product with any other type of battery. Jump starting other battery chemistries may result in injury, death or property damage. Contact the battery manufacturer prior to attempting to jump start the battery. Do not jump start a battery if you are unsure of the battery's specific chemistry or voltage.

The Battery. The built-in lithium-ion battery in the product should be replaced only by NOCO, and must be recycled or disposed of separately from household waste. Do not attempt to replace the battery yourself and do not handle a damaged or leaking lithium-ion battery. Never dispose of battery in household trash. Disposal of batteries in household trash is unlawful under state and federal environmental laws and regulations. Always take used batteries to your local battery recycling center. If the product battery is excessively hot, emitting an odor, deformed, cut, or is experiencing or demonstrating an abnormal occurrence, immediately stop all use and contact NOCO.

Battery Charging. Charge the product with the included USB-C charging cable. NOCO is not responsible for damage, injury, and/or death while using non-approved, third-party charging products. Be cautious of using low quality power adaptors, as they may present a serious electrical risk that can result in injury and/or death to person, device, and property. Using damaged cables or chargers, or charging when moisture is present, can result in electric shock. Using generic or third-party power adapter may shorten the life of your product and cause the product to malfunction. NOCO is not responsible for the user's safety when using accessories or supplies that are not approved by NOCO. When using a USB power adapter to charge the product, make sure that the AC plug is fully inserted into the adapter before you plug it into a power outlet. Power adapters may become warm during normal use, and prolonged skin contact may cause bodily injury. Always allow adequate ventilation around power adapters when using them. To ensure maximum battery life, avoid charging your product for more than a week at a time, as overcharging may shorten battery life. Over time, an unused product will discharge and must be recharged before use. Disconnect the product from power sources when not in use. Use the product only for their intended purposes.

Medical Devices. Product may emit electromagnetic fields. Product contains magnetic components which may interfere with pacemakers, defibrillators, or other medical devices. These electromagnetic fields may interfere with pacemakers or other medical devices. Consult with your physician prior to use if you have any medical device including pacemakers. If you suspect the product is interfering with a medical device, stop using the product immediately and consult your physician.

Medical Conditions. If you have any medical condition that you believe could be affected by product, including but not limited to; seizures, blackouts, eyestrain or headaches, consult your physician prior to use of product. The use of a integrated high-powered flashlight contains a light sensitivity hazard. Use of the light in Strobe Mode may cause seizures in persons with photosensitive epilepsy, which may result in serious injury or death.

Light. Staring directly into the light beam or shine of the flashlight may result in permanent eye injury. The product is equipped with a high output LED pre-focused lamp that emits a powerful beam at the highest setting.

Cleaning. Power off

the product before attempting any maintenance or cleaning. Clean and dry product immediately if it comes in contact with liquid or any type of contaminant. Use a soft, lint-free (microfiber) cloth. Avoid getting moisture in openings. **Explosive Atmospheres.** Obey all signs and instructions. Do not operate product in any area with a potentially explosive atmosphere, including fueling areas or areas which contain chemicals or particles such as grain, dust or metal powders. **High-Consequence Activities.** This product is not intended for use where the failure of the product could lead to injury, death or severe environmental damage. **Radio Frequency Interference.** Product is designed, tested, and manufactured to comply with regulations governing radio frequency emissions. Such emissions from the product can negatively affect the operation of other electronic equipment, causing them to malfunction. **Model Number: GBX45** This device complies with Part 15 of the FCC Rules. Operation is subject to the following two conditions: (1) this device may not cause harmful interference, and (2) this device must accept any interference received, including interference that may cause undesired operation. NOTE: This equipment has been tested and found to comply with the limits for a Class A digital device, pursuant to Part 15 of the FCC Rules. These limits are designed to provide reasonable protection against harmful interference when the equipment is operated in a commercial environment. This equipment generates, uses, and can radiate radio frequency energy and, if not installed and used in accordance with the instruction manual, may cause harmful interference to radio communications. Operation of this equipment in a residential area is likely to cause harmful interference in which case the user will be required to correct the interference at his own expense.

How To Use

Step 1: Charge the GBX45

The GBX45 comes partially charged out of the box and needs to be fully charged prior to use. Connect the GBX45 using the included USB-C Charge Cable to the USB-C IN/OUT port. It can be recharged from any powered USB port, like an AC adapter, car charger, laptop and more. The USB-C IN/OUT port utilizes Power Delivery 3.0 technology capable of receiving/delivering up to 60W. The time to recharge a GBX45 will differ based on the discharge level and the power source used. Actual results may vary due to battery conditions.

When recharging, the charge level of the internal battery is indicated by the charge LEDs. The LEDs will slowly pulse 'on' and 'off' and become solid until all four charge LEDs are on. When the battery is fully charged, the green 100% LED will be solid, and the 25%, 50% and 75% charge LEDs will turn «off». From time to time, the green 100% LED will pulse indicating maintenance charging is occurring.

Recharge Time:	Charger Rating:
16h	2.5W
8h	5W
4h	10W

Internal Battery Level



25% 50% 75% 100%

Fast Charge.

The GBX45 is equipped with fast charging technology that allows it to be recharged at a rate of up to 60W. A compatible charger, capable of 60W USB-C Power Delivery 3.0, is required to fully utilize this feature. The fast charge LED will illuminate when rate of charge exceeds 15W, indicating USB Power Delivery 3.0 is active.

Fast Charge:

Recharge Time:	Charger Rating:
0.8h	60W

Auto Charger

The most effective way to charge GBX45 is by using The NOCO Auto Charger (not included).

NOTE: The vehicle must be On / Running for the Auto Charger to Fast Charge the unit.

Auto Charger:

Recharge Time:	Charger Rating:
0.8h	60W

Power Source

When charging USB devices, it is important to power on the GBX45 unit first and then plug in the USB device being charged.

NOTE: If the GBX45 unit is not powered on first, it will drain power from the USB device, if it is DRP compatible. To charge GBX45 with a DRP compatible device (e.g phone, laptop, power bank) ensure GBX45 is powered OFF before making a cable connection between GBX45 and the DRP device.

Step 2: Connect to the Battery.

Carefully read and understand the vehicle owner's manual on specific precautions and recommended methods for jump starting the vehicle. Make sure to determine the voltage and chemistry of the battery by referring to your battery owner's manual prior to using this product. The GBX45 is for jump starting 12-volt lead-acid batteries only. Before connecting to the battery, verify that you have a 12-volt lead-acid battery. The GBX45 is not suitable for any other type of battery. Identify the correct polarity of the battery terminals on the battery. The positive battery terminal is typically marked by these letters or symbol (POS,P,+). The negative battery terminal is typically marked by these letters or symbol (NEG,N,-). Do not make any connections to the carburetor, fuel lines, or thin, sheet metal parts. The below instructions are for a negative ground system (most common). If your vehicle is a positive ground system (very uncommon), follow the below instructions in reverse order.

1. Connect the battery clamps to the GBX45 by connecting to the 12V OUT port.
2. Connect the positive (red) battery clamp to the positive (POS,P,+) battery terminal and the negative (black) battery clamp to the negative (NEG,N,-) battery terminal or vehicle chassis.

Step 3: **Jump Starting.**

1. Make sure all of the vehicle's power loads (headlights, radio, air conditioning, etc.) are turned off before attempting to jump start the vehicle.
2. Press the power button to begin jump starting, and all LEDs will flash once. If you are properly connected to the battery, the white boost LED will illuminate and the battery charge LEDs will chase. A 60-second timeout countdown will begin as soon as a battery is detected.
3. Try starting the vehicle. Most vehicles will immediately start. If the vehicle does not start right away, wait 20-30 seconds and try again. After the 60-second timeout is complete, the unit must be powered off, then back on, to initiate a new jump-start sequence. Do not attempt more than five (5) consecutive jump starts within a fifteen (15) minute period. Allow the GBX45 to rest for fifteen (15) minutes before attempting to jump start the vehicle again.
4. Once you have started your vehicle, power off the unit, disconnect the battery clamps, and remove the GBX45.

60-Second Timeout.

A 60-second countdown will be initiated as soon as a battery is detected. After 60 seconds has elapsed, the jump starting function will be disabled. The boost LED will turn off and the internal battery charge LEDs will indicate the current charge level of the unit. To reset the jump-starting function, press the power button to power off the unit. Press the power button again to power on the unit and restart the jump starting function.

CAUTION.

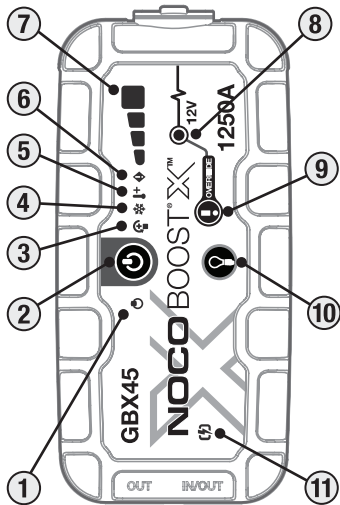
60-SECOND TIMEOUT IS DISABLED WHILE USING MANUAL OVERRIDE MODE. POWER WILL CONTINUE TO BE SUPPLIED WHILE MANUAL OVERRIDE IS ACTIVE. TO MAXIMIZE THE NUMBER OF JUMP-STARTS, IT IS RECOMMENDED TO TURN OFF THE BOOST-UNIT AS SOON AS THE VEHICLE HAS STARTED.

Low Voltage Batteries & Manual Override.

The GBX45 is designed to jump start 12-volt lead-acid batteries down to 3-volts. If your battery is below 3-volts, the Boost LED will be «off». This is an indication that the GBX45 can not detect a battery. If you need to jump start a battery below 3-volts there is a manual override feature, which allows you to force «on» the jump start function.

CAUTION.

USE THIS MODE WITH EXTREME CARE. THIS MODE IS FOR 12-VOLT LEAD-ACID BATTERIES ONLY. BOTH THE SPARK PROOF AND REVERSE POLARITY PROTECTION FEATURES ARE DISABLED. PAY VERY CLOSE ATTENTION TO THE POLARITY OF THE BATTERY BEFORE USING THIS MODE. DO NOT ALLOW THE POSITIVE AND NEGATIVE BATTERY CLAMPS TO TOUCH OR CONNECT TO EACH OTHER AS THE PRODUCT WILL GENERATE SPARKS. THIS MODE USES VERY HIGH CURRENT (UP TO 1250 AMPS) THAT CAN CAUSE SPARKS AND HIGH HEAT IF NOT USED PROPERLY. IF YOU ARE UNSURE ABOUT USING THIS MODE, DO NOT ATTEMPT AND SEEK PROFESSIONAL HELP.



Interface

1. Power LED Illuminates White when unit is "On". Will illuminate orange after the 60-second timeout countdown until the clamps are removed from the Car Battery or the GBX45 is power cycled 'off' and back 'on' again.

2. Power Button Push to turn unit "on" & "off" or restart boost after 60-second timeout.

3. Reverse Polarity Error LED Illuminates red if reverse polarity is detected.

4. Cold LED Illuminates solid or flashes blue when internal temperature is too low.

5. Hot LED Illuminates solid or flashes red when internal temperature is too high.

6. Error LED Blinks "on" and "off" in various sequences (from 1 to 6 blinks) to convey error conditions.

7. Internal Battery Level Indicates the charge level of the internal battery.



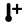


8. Boost LED Illuminates white when boost is active. If the unit is connected properly to a battery, the GBX45 will automatically detect a battery and go into boost mode (LED flashes white when manual override feature is active).

9. Manual Override Button To enable, push and hold for three (3) seconds. **WARNING: Disables safety protection and manually forces Boost «On».** Only for use when a battery voltage is too low to be detected.

10. Light Mode Button Toggles the ultra-bright LED light through 7 light modes: 100% > 50% > 10% > SOS > Blink > Strobe > Off

11. Fast Charge LED Illuminates white when fast charge is active. Fast charge LED turns red (solid/blinking) when there is an error.

Troubleshooting

	Error	Reason/Solution
	 Solid Red	Reverse polarity detected. / Reverse the battery connections.
	Single (1) Flash	Short circuit detected on battery clamps. / Remove all loads, reconnect clamps to battery.
	Double (2) Flash	High voltage detected at clamps (the GBX45 is connected to a voltage system greater than 12V, such as 24V).
	Triple (3) Flash	Bad battery cell detected. / When an internal battery cell has failed during charging.
	Quadruple (4) Flash	Charge timeout error (i.e. the GBX45 has been in bulk charge for too long).
	Sextuple (6) Flash	Back-Charge detected into the GBX45 through the clamps while in a Boost Mode (i.e. the GBX45 is in Manual Override and then connected to a system greater than 12V, such as 24V).
	Hot LED: Solid	Unit is fully operational, but approaching upper temperature limit. / Allow the unit to cool.
	Hot LED: Flashing	Unit is too hot to jump start, only the flashlight is available in this state. / Allow the unit to cool.
	Cold LED: Solid	Unit is fully operational, but approaching lower temperature limit. / Allow the unit to warm up.
	Cold LED: Flashing	Unit is too cold to jump start, only the flashlight is available in this state / Allow the unit to warm up.
	Flashing Red	If charging the unit, check the cable or charger for damage / If charging a USB-C device, check cable or device for damage / If problem persists, contact NOCO support.
	Solid Red	Connected Charger is Incompatible. / Unplug USB Cable, Turn Off/On the Unit, Use Different Charger.

Technical Specifications

Internal Battery: 31Wh Lithium Ion

Peak Current Rating: 1250A

Operating Temperature: -20°C to +50°C

Charging Temperature: 0°C to +40°C

Storage Temperature: -20°C to +50°C (avg Temp.)

USB-C (In): 5V 1.5A/9V 3A/12V 3A/15V 3A/20V 3A

USB-C (Out): 5V 3A/9V 3A/12V 3A/15V 3A/20V 3A

USB (Output): 5VDC 2.1A Max / 10W Max

Housing Protection: IP65 (w/Ports Closed)

Cooling: Natural Convection

Dimensions (L x W x H): 6.8 x 3.3 x 2.1 Inches

Weight: 1.3 Pounds

NOCO One (1) Year Limited Warranty.

NOCO warrants that this product (the "Product") will be free from defects in material and workmanship for a period of One (1) Year from the date of purchase (the "Warranty Period"). For defects reported during the Warranty Period, NOCO will, at its discretion, and subject to NOCO's technical support analysis, either repair or replace defective products. Replacement parts and products will be new or serviceably used, comparable in function and performance to the original part and warranted for the remainder of the original Warranty Period.

NOCO'S LIABILITY HEREUNDER IS EXPRESSLY LIMITED TO REPLACEMENT OR REPAIR. TO THE MAXIMUM EXTENT PERMITTED BY LAW, NOCO SHALL NOT BE LIABLE TO ANY PURCHASER OF THE PRODUCT OR ANY THIRD PARTY FOR ANY SPECIAL, INDIRECT, CONSEQUENTIAL OR EXEMPLARY DAMAGES, INCLUDING, BUT NOT LIMITED TO, LOST PROFITS, PROPERTY DAMAGE OR PERSONAL INJURY, RELATED IN ANY WAY TO THE PRODUCT, HOWSOEVER CAUSED, EVEN IF NOCO HAD KNOWLEDGE OF THE POSSIBILITY OF SUCH DAMAGES. THE WARRANTIES SET FORTH HEREIN ARE IN LIEU OF ALL OTHER WARRANTIES, EXPRESS, IMPLIED, STATUTORY OR OTHERWISE, INCLUDING, WITHOUT LIMITATION, THE IMPLIED WARRANTIES OF MERCHANTABILITY AND FITNESS FOR A PARTICULAR PURPOSE, AND THOSE ARISING FROM COURSE OF DEALING, USAGE OR TRADE PRACTICE. IN THE EVENT THAT ANY APPLICABLE LAWS IMPOSE WARRANTIES, CONDITIONS OR OBLIGATIONS THAT CANNOT BE EXCLUDED OR MODIFIED, THIS PARAGRAPH SHALL APPLY TO THE GREATEST EXTENT ALLOWED BY SUCH LAWS.

This Warranty is made solely for the benefit of the original purchaser of the Product from NOCO or from a NOCO approved reseller or distributor and is not assignable or transferable. To assert a warranty claim, the purchaser must: (1) request and obtain a return merchandise authorization ("RMA") number and return location information (the "Return Location") from NOCO Support by emailing support@no.co or by calling 1.800.456.6626; and (2) send the Product, including

RMA number, and receipt to the Return Location. DO NOT SEND IN PRODUCT WITHOUT FIRST OBTAINING AN RMA FROM NOCO SUPPORT.

THE ORIGINAL PURCHASER IS RESPONSIBLE (AND MUST PREPAY) ALL PACKAGING AND TRANSPORTATION COSTS TO SHIP PRODUCTS FOR WARRANTY SERVICE.

NOTWITHSTANDING THE ABOVE, THIS HASSLE-FREE WARRANTY IS VOID AND DOES NOT APPLY TO PRODUCTS THAT: (a) are misused, mishandled, subjected to abuse or careless handling, accident, improperly stored, or operated under conditions of extreme voltage, temperature, shock, or vibration beyond NOCO's recommendations for safe and effective use; (b) improperly installed, operated or maintained; (c) are/were modified without the express written consent of NOCO; (d) have been disassembled, altered or repaired by anyone other than NOCO; (e) the defects of which were reported after the Warranty Period.

THIS HASSLE-FREE WARRANTY DOES NOT COVER: (1) normal wear and tear; (2) cosmetic damage that does not affect functionality; or (3) Products where the NOCO serial number is missing, altered, or defaced.

HASSLE-FREE WARRANTY CONDITIONS

These conditions apply only to product during the warranty period. The Hassle-Free Warranty is void either by elapsed time from date of purchase (elapsed time from serial number date, if no proof of purchase) or from the conditions listed earlier in this document. Return product with the appropriate documentation.

With Receipt:

1 Year: No charge. With proof of purchase, The warranty period begins on date of purchase

With NO Receipt:

1 Year: No charge. With no proof of purchase, the warranty period begins on the serial number date.

We recommend registering your NOCO product in order to upload proof of purchase and extend your effective warranty dates. You may register your NOCO product online at: noco.co/register. If you have any questions regarding your warranty or product, contact NOCO Support (email and phone number above) or write to: The NOCO Company, at 30339 Diamond Parkway, #102, Glenwillow, OH 44139 USA.

For more information and support visit:

www.no.co/support

NOCO[®]

GBX45.10122022B

12V**1250A****GBX45**

EXTREME POWER. ULTRASAFE® LITHIUM JUMP STARTER.™

GAS & DIESEL

6.5L GAS & 4.0L DIESEL.

Designed for gas engines up to 6.5 liters and diesel engines up to 4.0 liters for small diesel cars, SUVs, boats, trucks, ATVs, motorcycles and more.

0% TO BOOST

FAST CHARGE.

Boost X is equipped with USB-C technology that, combined with power delivery, gives you lightning-fast recharges. Completely recharge Boost X in less time, or go from 0% to jump starting in just 5-minutes of charge.



60-SECOND TIMEOUT.

An automatic power conservation feature. Start vehicle within 60 seconds. After the 60-second timeout is complete, the unit must be powered off, then back on, to initiate a new jump-start sequence.

2.0

ULTRASAFE 2.0.

We took our UltraSafe technology and made it better. It's still our simple, mistake-free design featuring spark-proof technology and reverse polarity protection, but with enhanced thermal efficiency and power management to provide better performance and longer battery life.

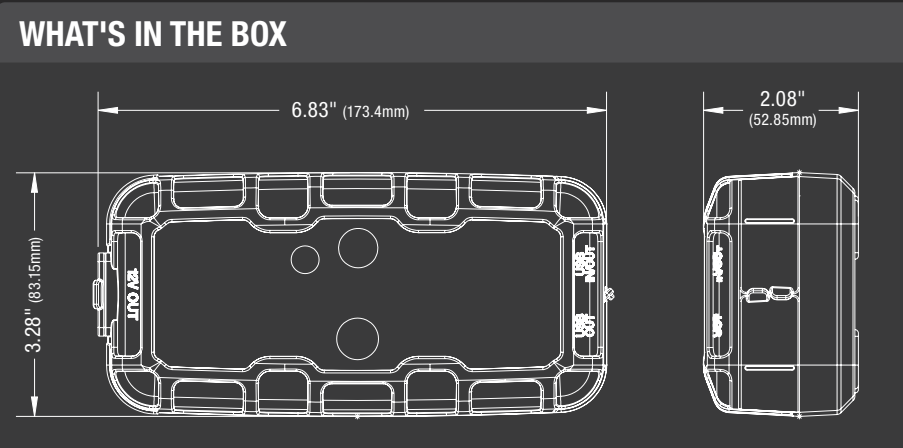
**NOCO**

30339 Diamond Parkway, #102
Glenwillow, OH 44139 | USA
1.800.456.6626

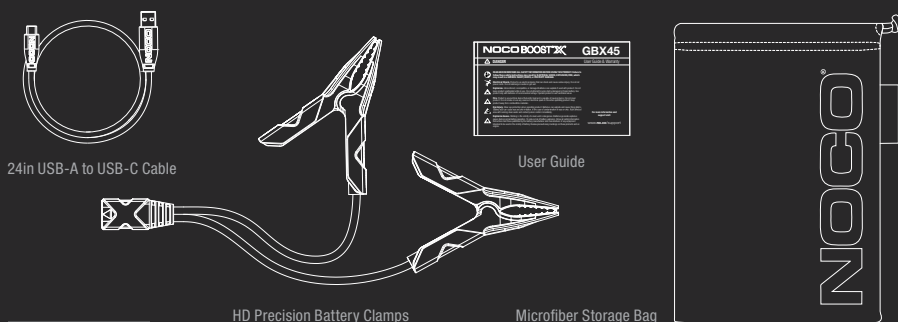
no.co**LEAD ACID****AUTO | MARINE | RV | POWERSPORT | LAWN & GARDEN**



INTERFACE	
POWER LED The charger is in standby or the battery voltage is too low for the charger to detect.	
FAST CHARGE Illuminates white when fast charge is active. Fast charge LED turns red (solid/blinking) when there is an error.	
REVERSE POLARITY Charger is connected to the battery in reverse. Reverse the connections.	
COLD INDICATOR Illuminates solid or flashes blue when internal temperature is too low.	
ERROR Illuminates Red if reverse polarity is detected. Blinks "on" and "off" in various sequences (from 1 to 6 blinks) to convey error conditions.	
HOT INDICATOR Illuminates solid or flashes red when internal temperature is too high.	
CHARGE LED Indicates the charge level of the internal battery.	
BOOST LED Illuminates white when boost is active. The LED flashes white when manual override feature is active.	



*Accessories not to scale with GBX45



CHARGE DEVICES.

Power everything. With USB-C Power Delivery, you have the power to charge almost everything. Its internal power bank provides 60-watts of power—both in and out—to effortlessly power our favorite USB-C devices, like phones, tablets, laptops, wearables, and more.

RECHARGE TIME

16h	2.5W
8h	5W
4h	10W

TECHNICAL SPECIFICATIONS

INTERNAL BATTERY:	31 Wh Lithium Ion
PEAK CURRENT RATING:	1250A
OPERATING TEMPERATURE:	-4°F to +122°F (-20°C to +50°C)
CHARGING TEMPERATURE:	32°F to +104°F (0°C to +40°C)
USB-C (IN):	5V (1.5A/9V 3A/12V 3A/15V 3A/20V 3A)
USB-C (OUT):	5V (3A/9V 3A/12V 3A/15V 3A/20V 3A)
USB (OUTPUT):	5VDC 2.1A Max / 10 W Max
HOUSING PROTECTION:	IP65 (w/Ports Closed)
COOLING:	Natural Convection
WEIGHT:	1.3 lbs (0.59kg)
LED FLASHLIGHT:	100 Lumens

VOLUMETRICS:	Retail Packaging: Dimensions: 3.62" x 4.96" x 8.23" Weight: 2.84 lbs UPC: 0-46221-20006-5	Master Carton: Dimensions: 9.25" x 12.60" x 12.01" Weight: 19.05 lbs Quantity: 6 UCC: 10046221200062
	Inner Carton: Dimensions: 3.98" x 8.66" x 5.43" Weight: 3.0 lbs	Units Per Pallet: 270 Units

NOCO

30339 Diamond Parkway, #102
Glenwillow, OH 44139 | USA
1.800.456.6626

no.co

