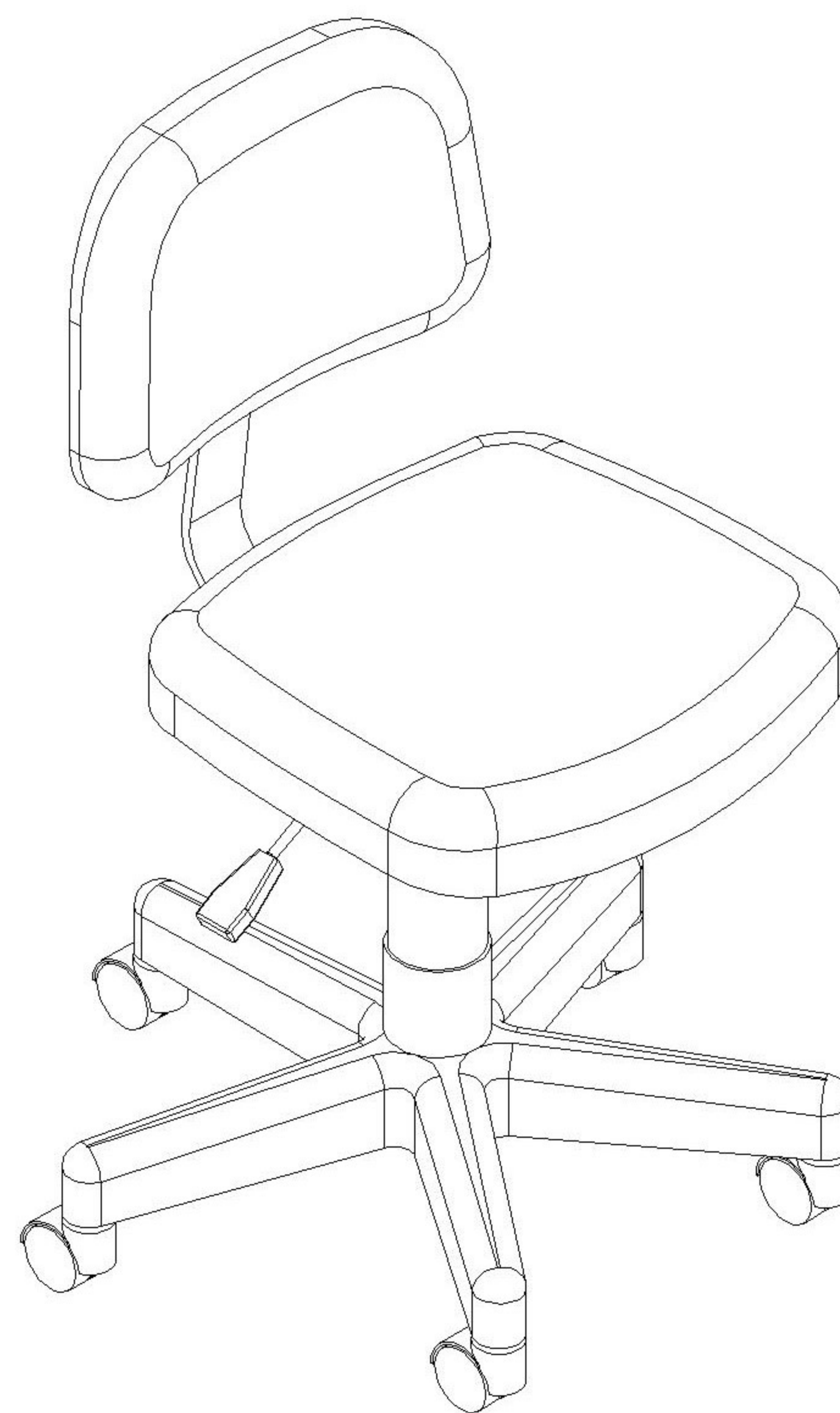


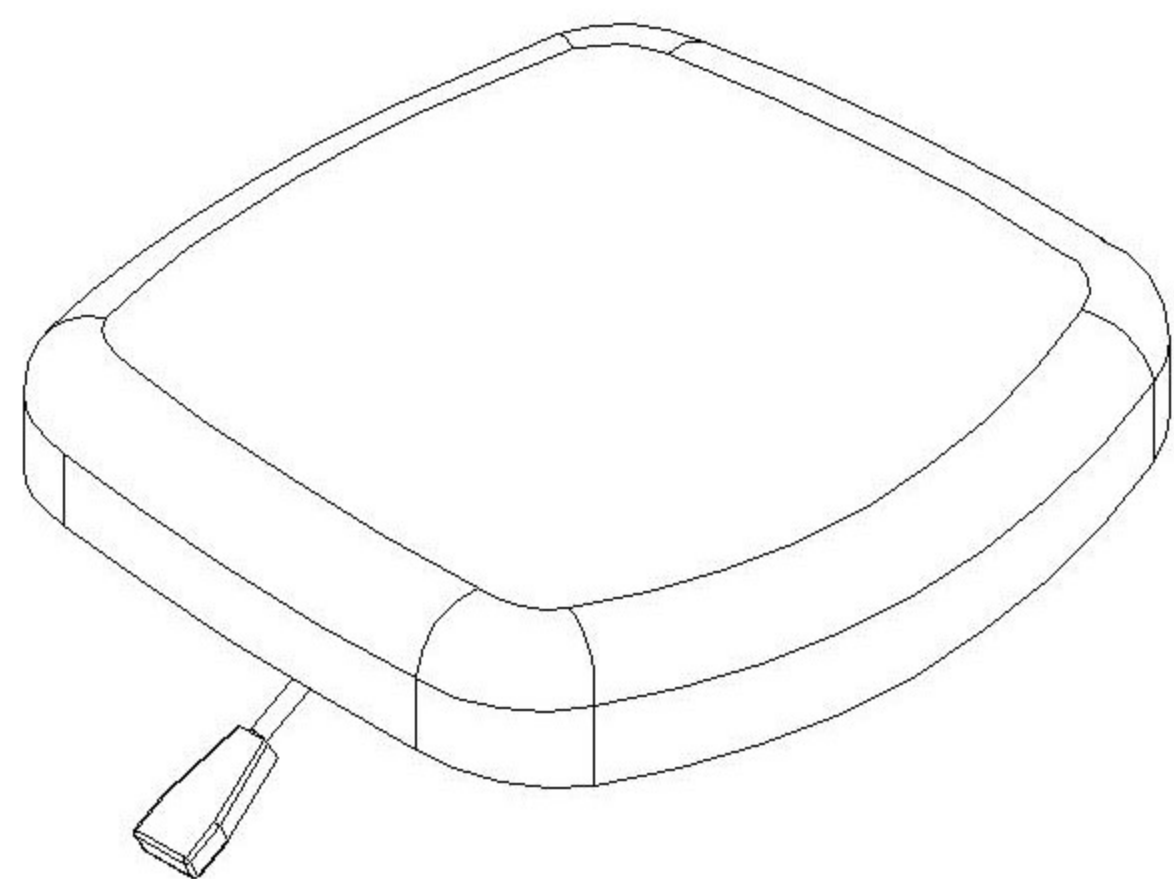


1-800-477-6655  
buyritebeauty.com

**SUSIE TECH CHAIR  
SY-7903  
INSTRUCTION MANUAL**

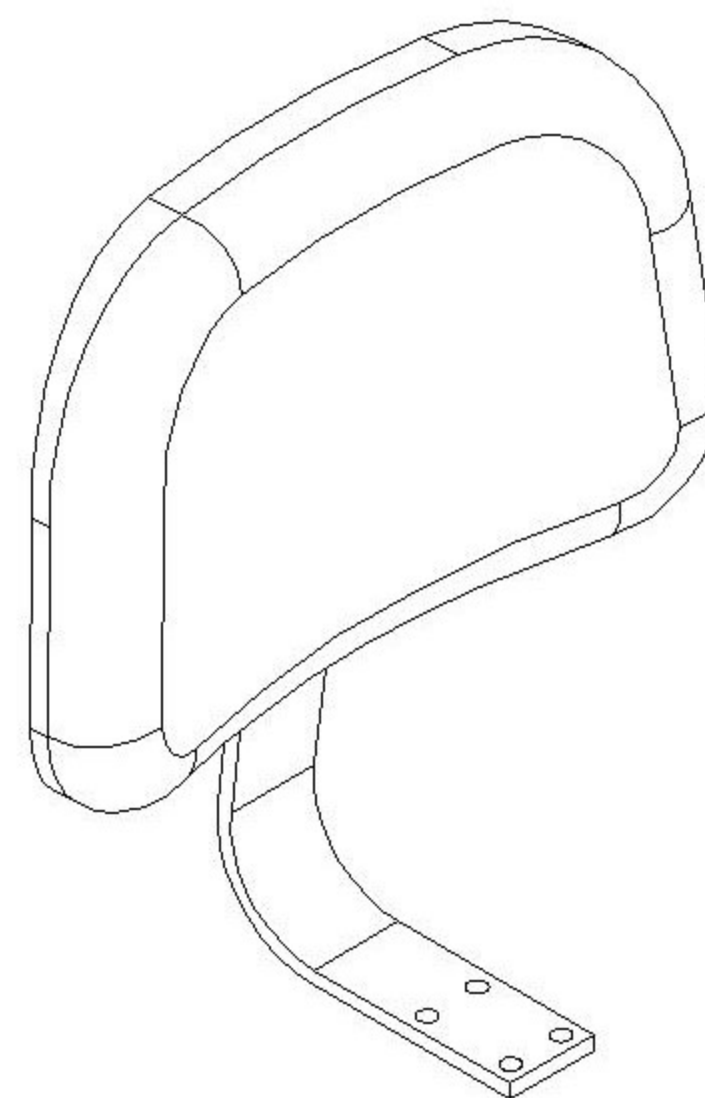


## List of Parts & Tools

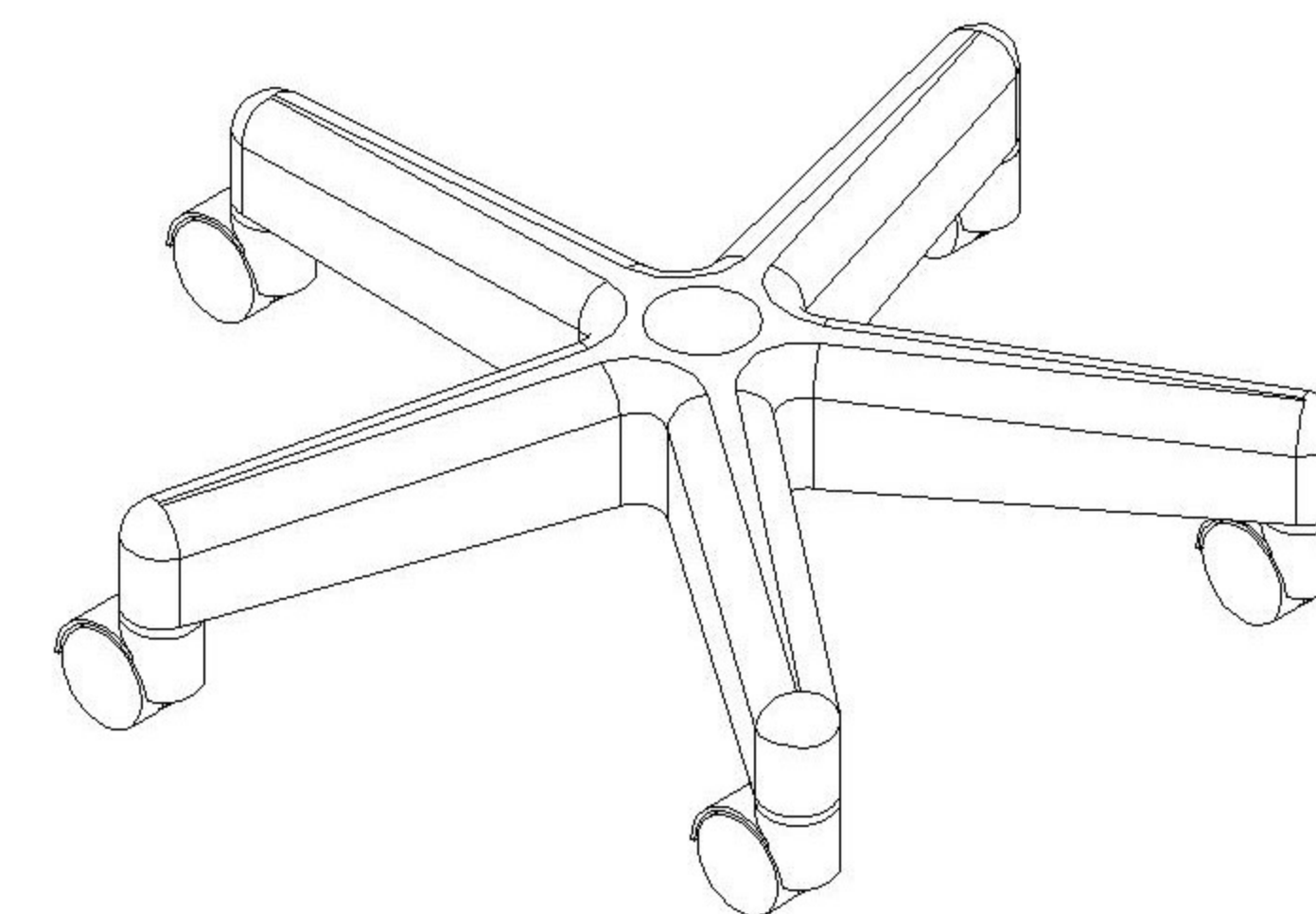


**X1**

Cushion

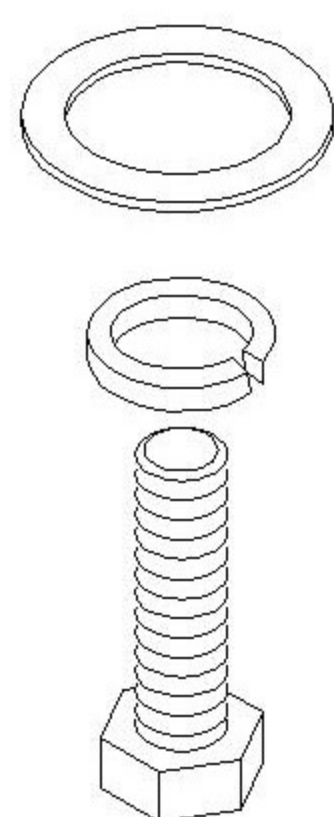


Backrest



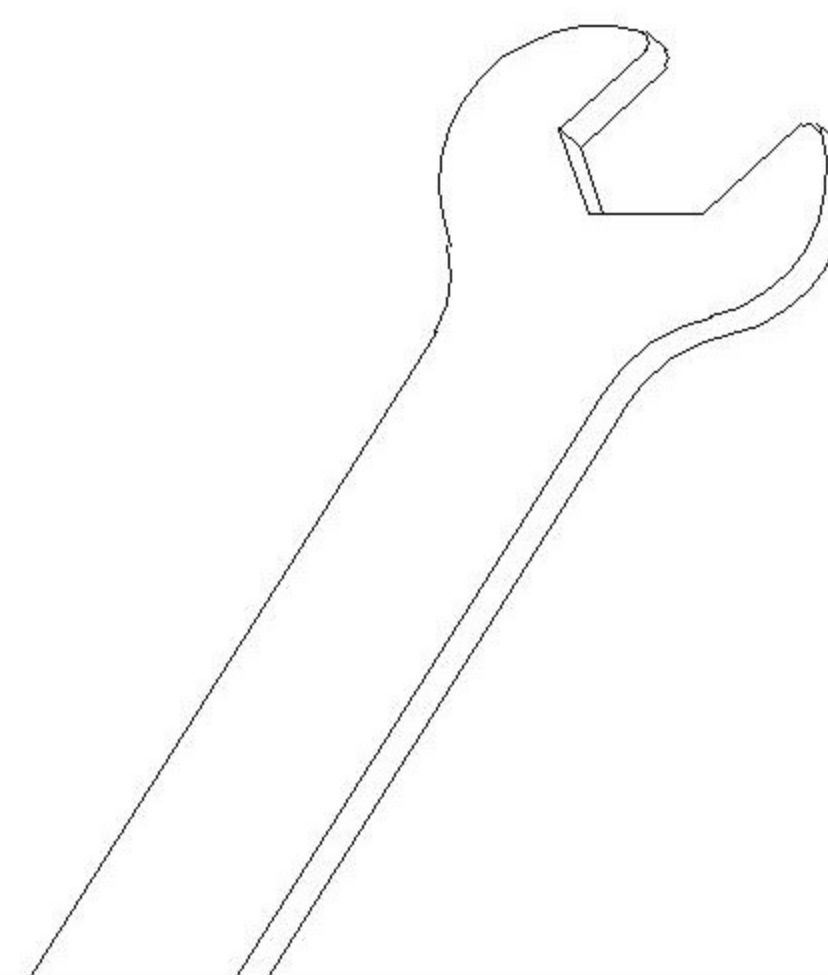
**X1**

Base



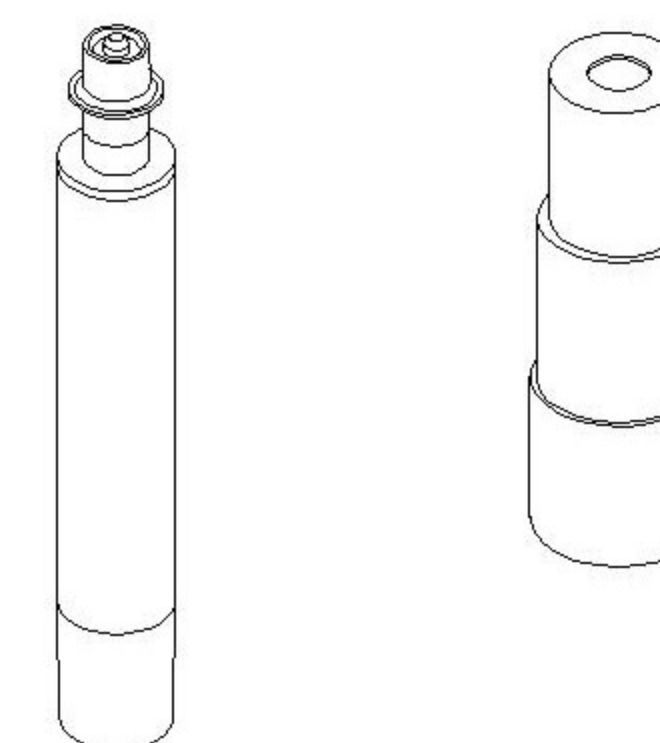
**X4**

M8X30mm(Already Installed)



**X1**

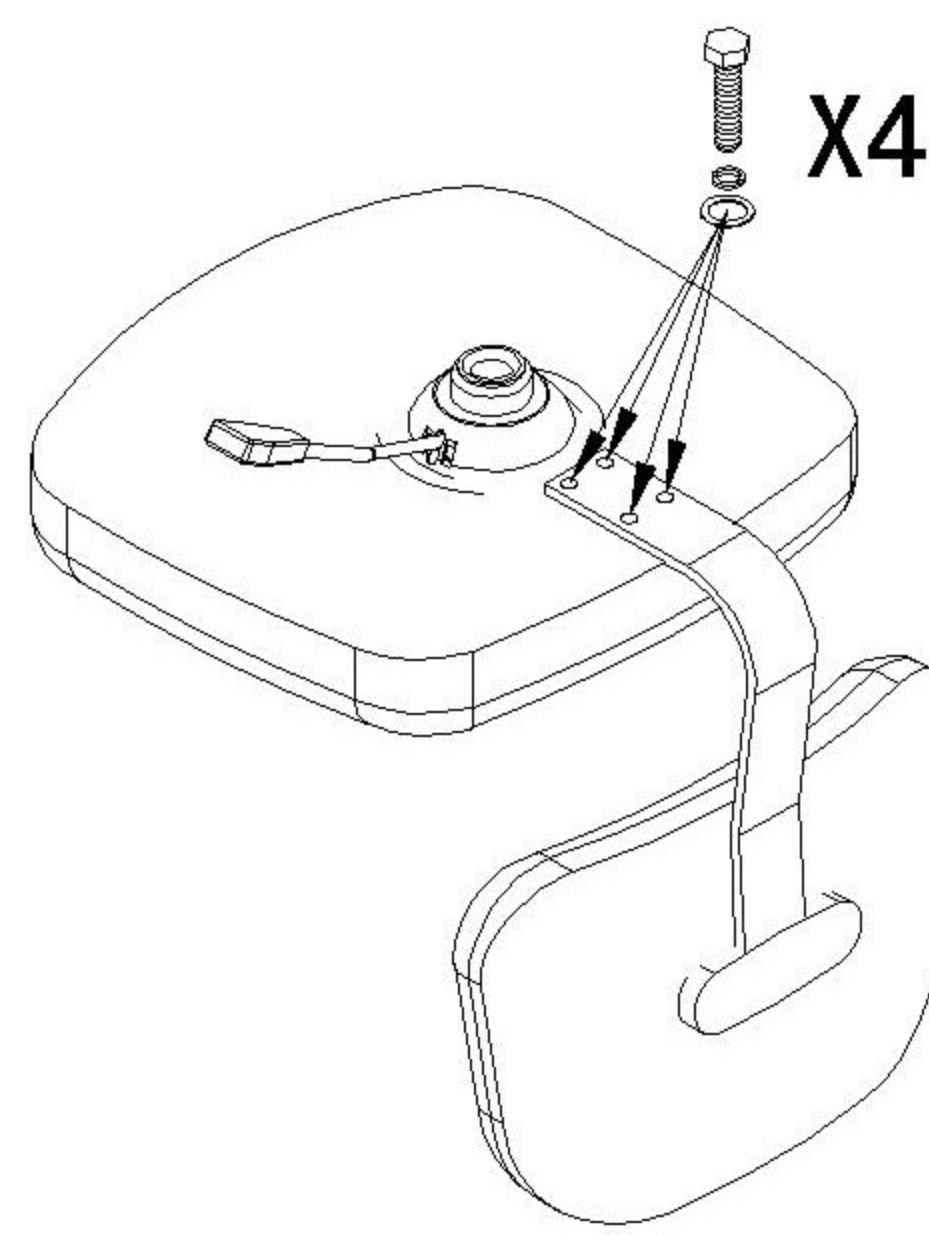
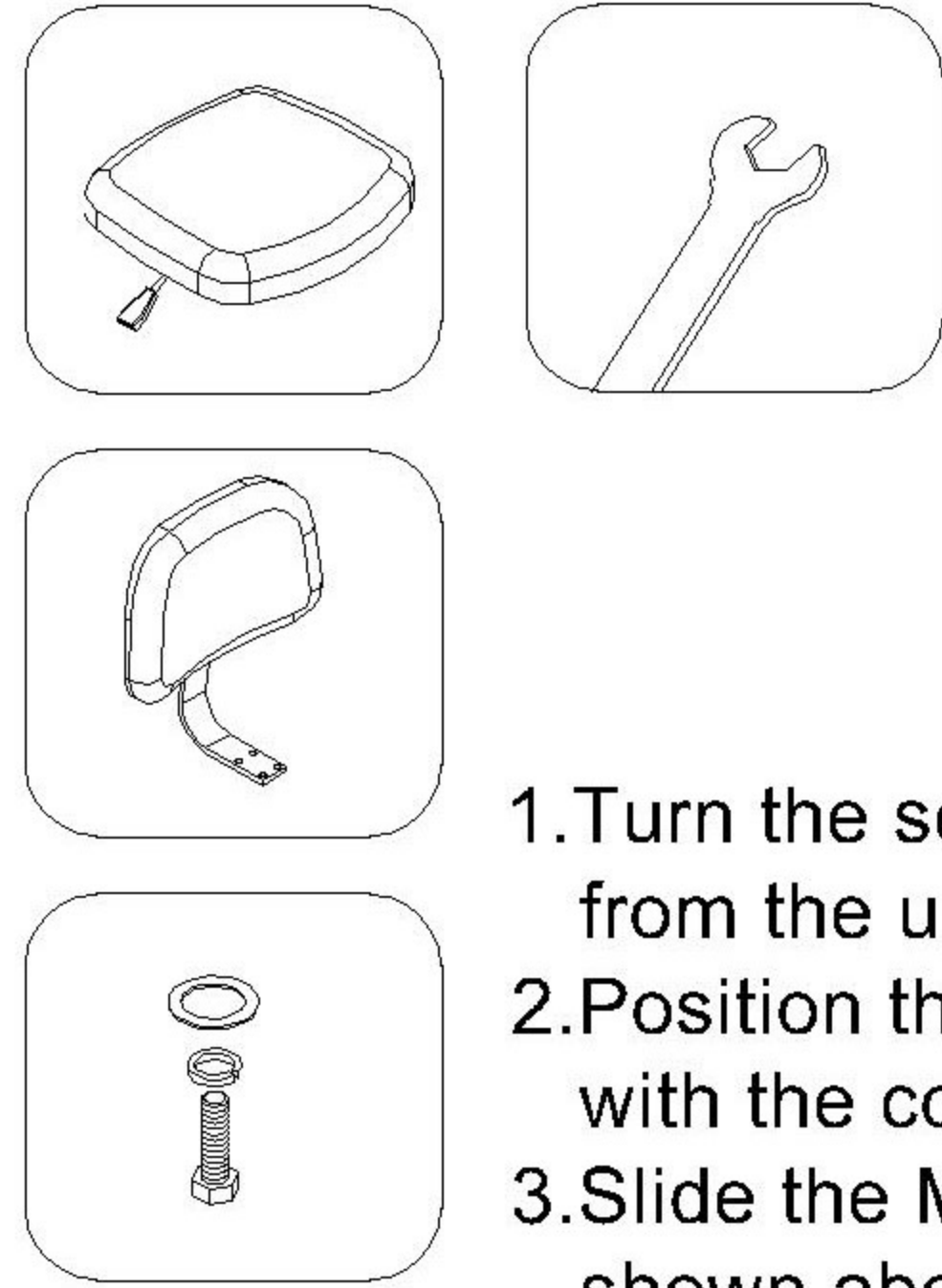
14mm



**X1**

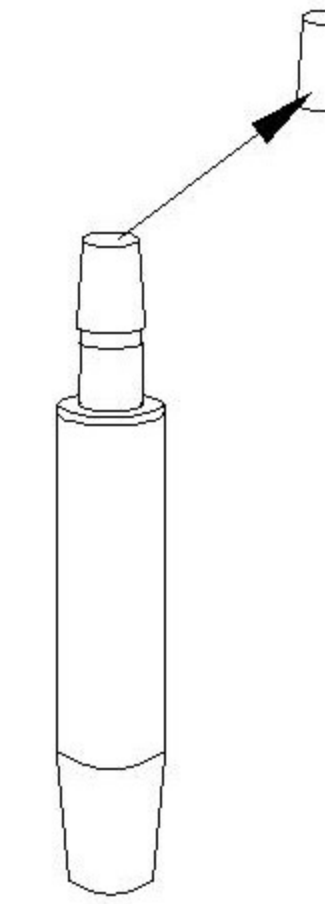
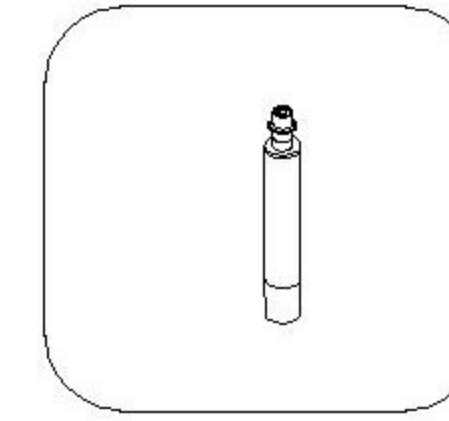
Gas Lift and Cover

## Step 1



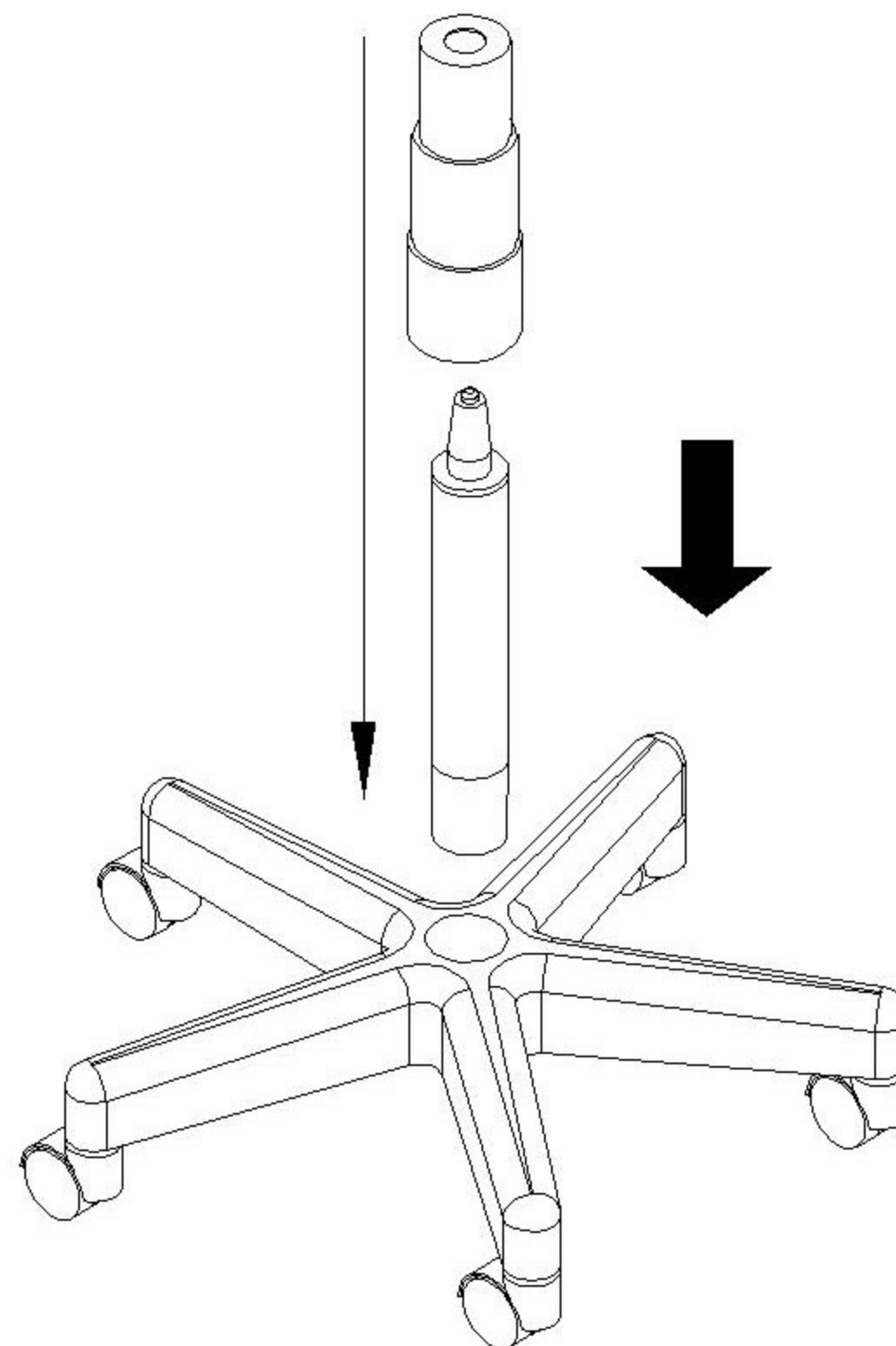
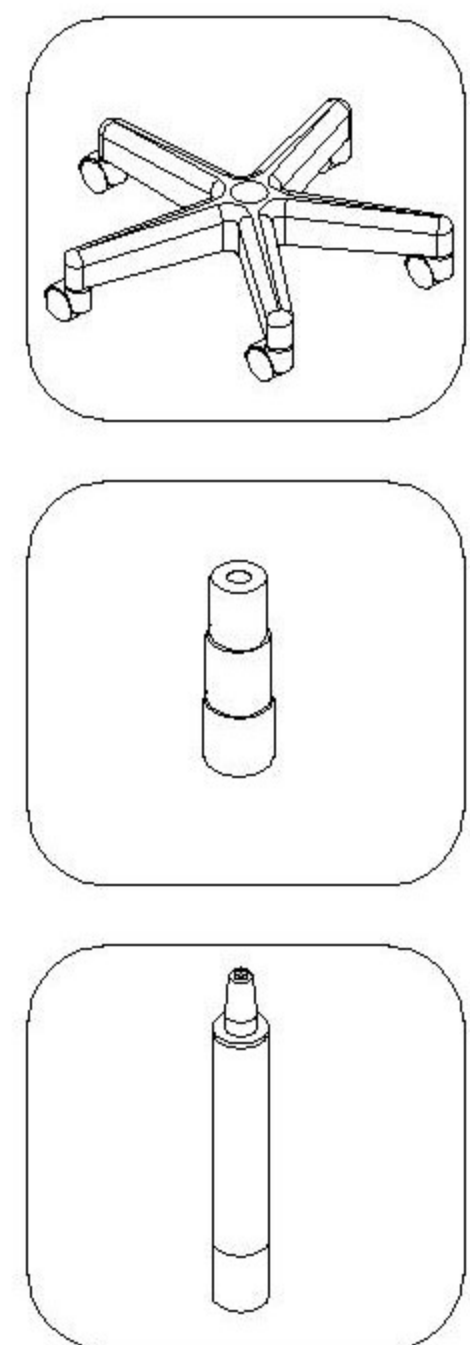
1. Turn the seat cushion over and remove the four screws and washers from the underside using the 14mm wrench.
2. Position the backrest bracket so that its lower mounting holes align with the corresponding threaded holes in the seat cushion.
3. Slide the M8 washers on each screw with the flat washer last as shown above.
4. Start all four screws loosely to ensure perfect alignment before tightening. Using the 14mm wrench evenly tighten each screw snug, be careful not to overtighten.

## Step 2



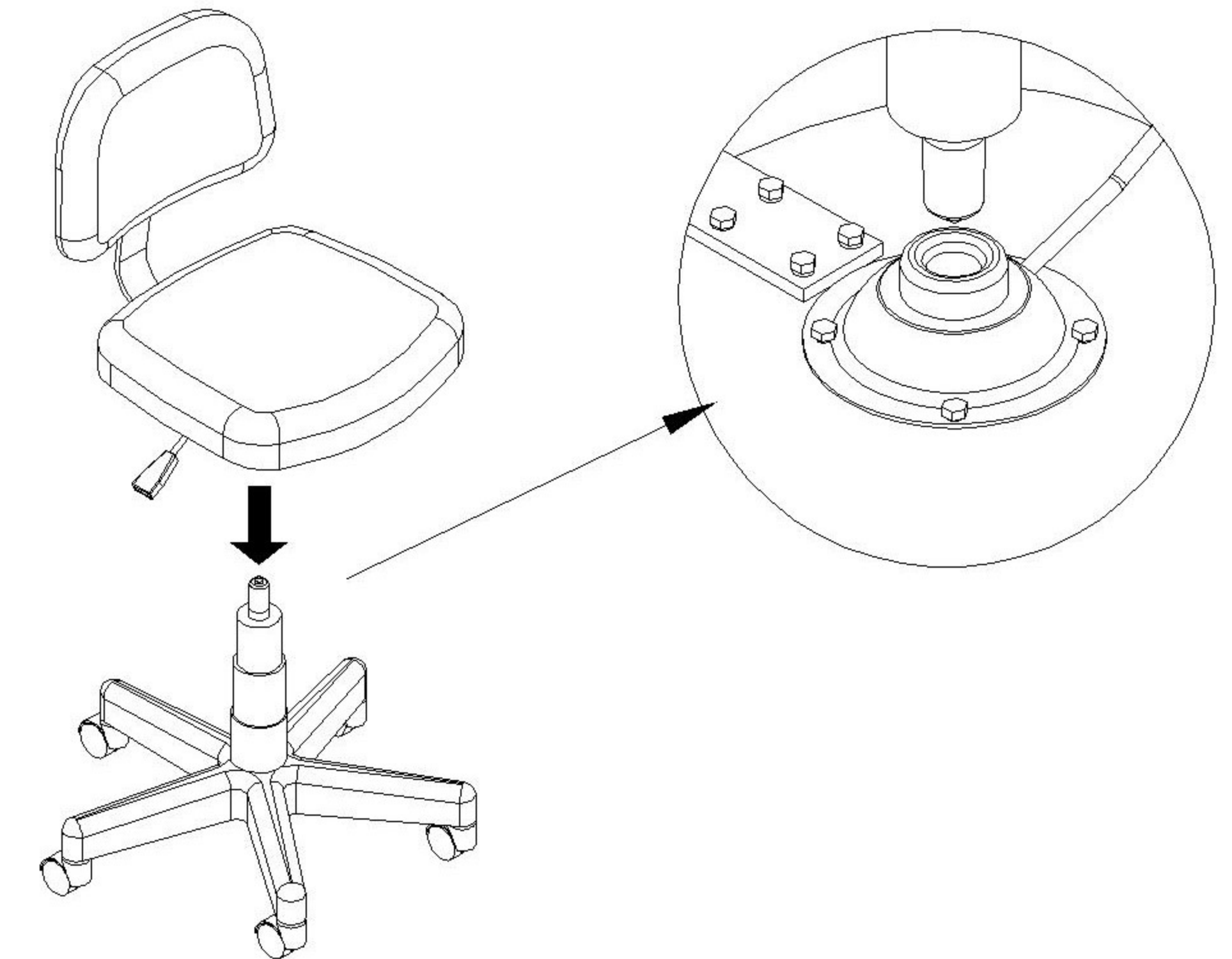
1. Remove the black plastic cap from the gas lift. The plastic cap is only meant for shipping and protection during storage.

## Step 3



1. Insert the gas lift into the stool base, ensuring the larger end is pointing downward.
2. Carefully slide the protective cover over the gas lift from the top until it is fully secure.

## Step 4



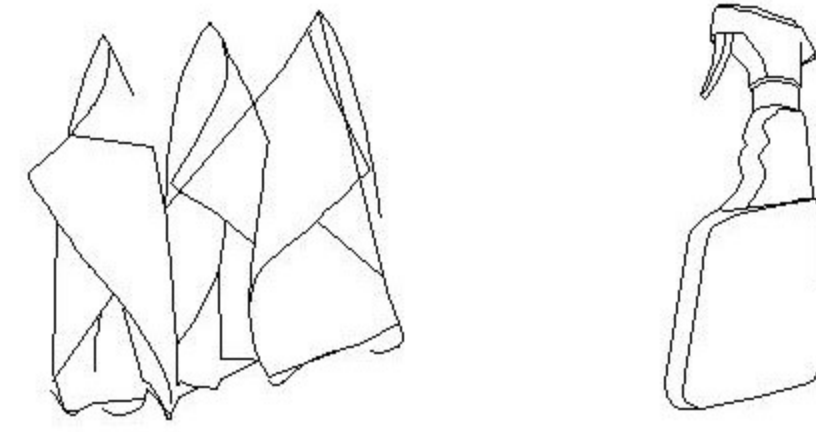
1. Align the top of the gas lift with the center hole on the underside of the seat cushion, then press down to seat the chair.



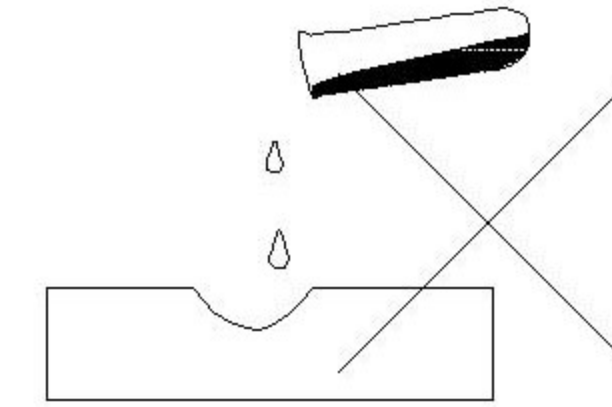
## Product care



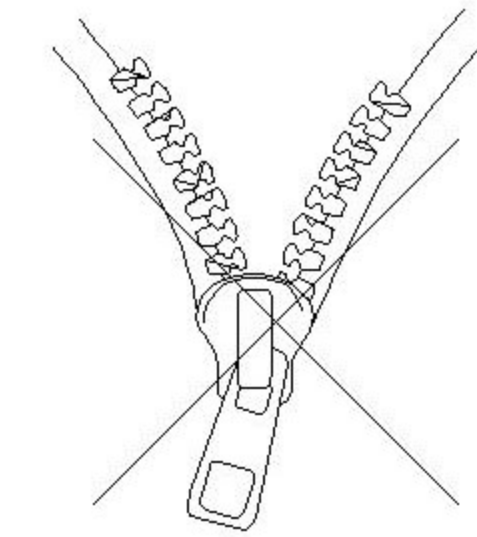
**Brush away excess hair**



**Clean surface with damp cloth or use simple soap & water solution.**



**Avoid using corrosive cleaning agents such as bleaches.**



**Do not remove upholstery for cleaning**

## Product Information

1. Enjoy your new chair!
2. After assembly and before use, we suggest extending the gas cylinder to full height and back down several times to prime the cylinder.
3. If you have any questions or concerns. Please contact our customer experience team at 912-335-4445