

Sears

owners manual



REG. TRADEMARK

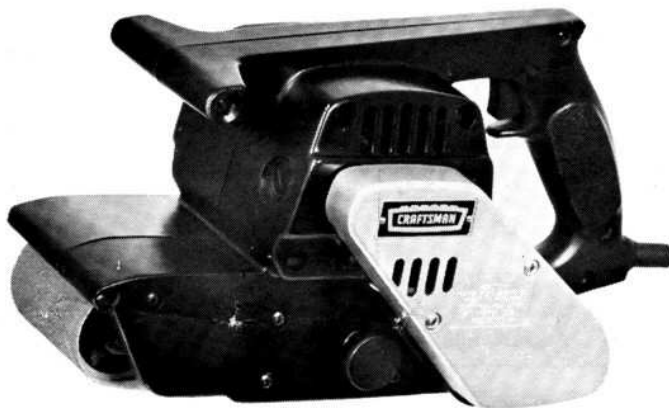
3 INCH BELT SANDER DOUBLE INSULATED

MODEL NO.
315.11720

CAUTION:

Read Rules for
Safe Operation
and Instructions
Carefully

- Introduction
- Operation
- Repair Parts



THIS SAFETY SEAL OF THE POWER TOOL INSTITUTE ASSURES YOU:



1. That the manufacturer's power tools, including the particular tool associated with the Seal, are produced in accordance with applicable Standards for Safety of Underwriters' Laboratories and American National Standards (ANSI).
2. That compliance with applicable safety standards is assured by independent inspection and testing conducted by Underwriters' Laboratories (UL).
3. That every motorized tool is inspected under power.
4. That every tool has with it adequate instructions and a list of safety rules for the protection of the user.
5. That the tool manufacturer is a member of the Power Tool Institute and is a sponsor of the Institute's Consumer Safety Education Program.

COPYRIGHT, 1969, BY POWER TOOL INSTITUTE, INC. ALL RIGHTS RESERVED

Designed exclusively for and sold only by
SEARS, ROEBUCK AND CO.—Chicago, Illinois 60607 U.S.A.
and SIMPSON-SEARS LIMITED—Toronto



GUARANTEE

CRAFTSMAN PORTABLE ELECTRIC TOOLS ARE UNCONDITIONALLY GUARANTEED FOR ONE YEAR TO GIVE COMPLETE SATISFACTION OR RETURN FOR FREE REPLACEMENT.

THIS GUARANTEE SERVICE IS AVAILABLE BY SIMPLY RETURNING THE TOOL TO ANY SEARS STORE.

SEARS, ROEBUCK AND CO. and SIMPSON-SEARS LTD.

introduction

DOUBLE INSULATION

Double Insulation is a concept in safety, replacing the standard grounded supply system, in electric power tools. The construction of a double insulated tool affords compatible protection to a properly grounded tool without the necessity for using a grounded conductor. The double insulation system eliminates the need for the usual three wire grounded power cord and grounded supply system. Whenever there is electric current in the tool there are two complete sets of insulation to protect the user. All exposed metal parts are isolated from the internal metal motor components with protecting insulation. The lead wires, switch, etc. with their functional insulation have the added protection of non-conductive sleeving or housings to complete the double insulation system.

SERVICING OF A TOOL WITH DOUBLE INSULATION REQUIRES EXTREME CARE AND KNOWLEDGE OF THE SYSTEM AND SHOULD BE PERFORMED ONLY BY A QUALIFIED SERVICE TECHNICIAN. FOR SERVICE WE SUGGEST YOU RETURN THE TOOL TO YOUR NEAREST SEARS STORE FOR REPAIR WHICH WILL BE DONE WITH ORIGINAL FACTORY REPLACEMENT PARTS.

Your Craftsman 3-inch Belt Sander is suitable for coarse, medium and fine sanding of wood, metals, plastics and other materials. It is ideal when used for smoothing rough boards, chamfering, rounding edges and many other general sanding applications. It is ideal for refinishing large pieces of furniture, stairs and other large surfaces. Its balanced design makes it easy to use.

RULES FOR SAFE OPERATION



1. **KNOW YOUR POWER TOOL** — Read owner's manual carefully. Learn its applications and limitations as well as the specific potential hazards peculiar to this tool.
2. **GROUND ALL TOOLS — UNLESS DOUBLE-INSULATED.** If tool is equipped with three-prong plug, it should be plugged into a three-hole electrical receptacle. If adapter is used to accommodate two-prong receptacle, the adapter wire must be attached to a **known** ground. (Usually the screw securing the receptacle cover plate.) **Never** remove third prong.
3. **KEEP GUARDS IN PLACE** and in working order.
4. **KEEP WORK AREA CLEAN.** Cluttered areas and benches invite accidents.
5. **AVOID DANGEROUS ENVIRONMENT.** Don't use power tool in damp or wet locations. And keep work area well lit.
6. **KEEP CHILDREN AWAY.** All visitors should be kept safe distance from work area.
7. **STORE IDLE TOOLS.** When not in use, tools should be stored in dry, high or locked-up place—out of reach of children.
8. **DON'T FORCE TOOL.** It will do the job better and safer at the rate for which it was designed.
9. **USE RIGHT TOOL.** Don't force small tool or attachment to do the job of a heavy duty tool.
10. **WEAR PROPER APPAREL.** No loose clothing or jewelry to get caught in moving parts. Rubber gloves and footwear are recommended when working outdoors.
11. **USE SAFETY GLASSES** with most tools. Also face or dust mask if cutting operation is dusty.
12. **DON'T ABUSE CORD.** Never carry tool by cord or yank it to disconnect from receptacle. Keep cord from heat, oil and sharp edges.
13. **SECURE WORK.** Use clamps or a vise to hold work. It's safer than using your hand and it frees both hands to operate tool.
14. **DON'T OVERREACH.** Keep proper footing and balance at all times.
15. **MAINTAIN TOOLS WITH CARE.** Keep tools sharp at all times, and clean for best and safest performance. Follow instructions for lubricating and changing accessories.
16. **DISCONNECT TOOLS.** When not in use, before servicing; when changing attachments, blades, bits, cutters, etc.
17. **REMOVE ADJUSTING KEYS AND WRENCHES.** Form habit of checking to see that keys and adjusting wrenches are removed from tool before turning it on.
18. **AVOID ACCIDENTAL STARTING.** Don't carry plugged-in tool with finger on switch.

COPYRIGHT, 1969, BY POWER TOOL INSTITUTE, INC. ALL RIGHTS RESERVED

CUSTOMER INSTRUCTIONS

- DO** read thoroughly INTRODUCTION and OPERATING INSTRUCTIONS before using your SANDER.
- DO** be sure switch is in "OFF" position before connecting tool to power supply.
- DO** disconnect power cord when cleaning or doing maintenance on tool.
- DO** be sure the voltage of the power supply agrees with the data plate marking on the unit.
- DO** use correct size extension cord as recommended.
- DO** replace both brushes when either is worn to about 1/4 inch in length.
- DO** use only specified replacement parts.
- DO** disconnect from power source and store in a clean dry place.
- DO** keep good sanding belt on tool. A wornout belt will not produce satisfactory results.
- DO** keep motor air vents and tracking mechanism clean. Sanding dust may be blown out with an air jet.
- DO** keep drive belt and sprockets clean and free from grease and oil.
- DON'T** use your SANDER before reading thoroughly, INTRODUCTION and OPERATING INSTRUCTIONS.
- DON'T** leave Sander unattended before disconnecting from power source.
- DON'T** allow the cord near sanding belt when operating.
- DON'T** force tool, allow Sander to perform as it was designed.
- DON'T** allow children to operate Sander.
- DON'T** carry unit by power cord.
- DON'T** plug or cover air vents to keep dust from flying. Vents must be kept open to keep motor cool.
- DON'T** engage sanding belt and workpiece before beginning sanding action or stop sanding action before removing from workpiece.
- DON'T** use Sander without adjusting belt tracking mechanism.
- DON'T** jerk the power cord to remove the plug from the socket.



The operation of any power tool can result in foreign objects being thrown into the eyes, which can result in severe eye damage. Always wear safety glasses or eye shields before commencing power tool operation. We recommend Wide Vision Safety Mask for use over spectacles, or standard safety glasses . . . available at Sears retail or catalog stores.

AVOID USE OF ALL SOLVENTS WHEN CLEANING PLASTIC PARTS. USE CLEAN CLOTHS AND WIPE PARTS AS MUCH AS POSSIBLE TO REMOVE DIRT, CARBON DUST, ETC. MOST PLASTICS ARE SUSCEPTIBLE TO VARIOUS TYPES OF COMMERCIAL SOLVENTS AND MAY BE DAMAGED BY THE USE OF THESE SOLVENTS.

THIS PRODUCT, or any electrical product, requires extreme care when service repairs are made. A dangerous electrical hazard can be created by tampering with the electrical or insulating systems or in the replacement or substitution of repair parts. Repairs should be made only by a qualified technician. If service is required we suggest you return the tool to your nearest Sears store for approved service with original factory replacement parts.

WHEN ELECTRIC TOOLS ARE USED ON FIBER-GLASS boats, sports cars, etc. it has been found that they are subject to accelerated wear and possible premature failure, as the fiberglass chips and grindings are highly abrasive to bearings, brushes, commutator, etc. Consequently it is not recommended that this tool be used for continuous production work on any fiberglass material. During any use on fiberglass it is extremely important that the tool is cleaned frequently by blowing with an air jet.

EXTENSION CORDS—The use of any Extension cord will cause some loss of power. To keep this to a minimum and to prevent overheating and motor burn-out, use the table below to determine the MINIMUM wire size (A.W.G.) Extension Cord.

Extension Cord Length	Wire Size A.W.G.
25- 50 Feet	16
50- 75 Feet	14
75-100 Feet	12

Extension cords suitable for use with your Sander are available at your nearest Sears Catalog Order or Retail Store.

Another time saving convenience is a cord-lock offered by Sears which prevents separation of cord. Cord-lock is available at your nearest Sears Catalog Order or Retail Store.

operating

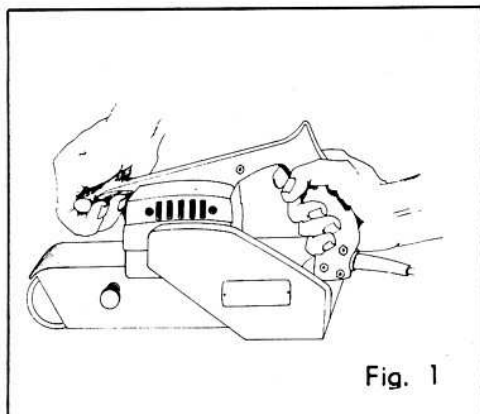


Fig. 1

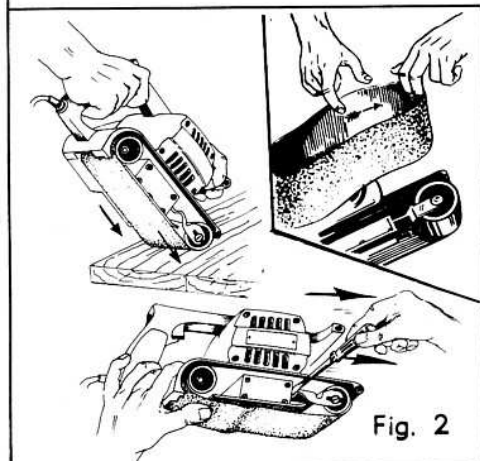


Fig. 2

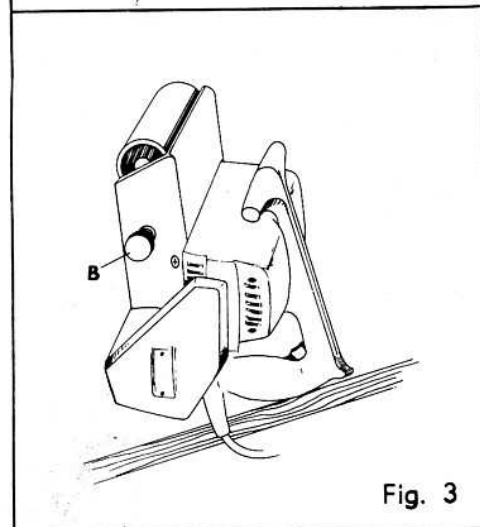


Fig. 3

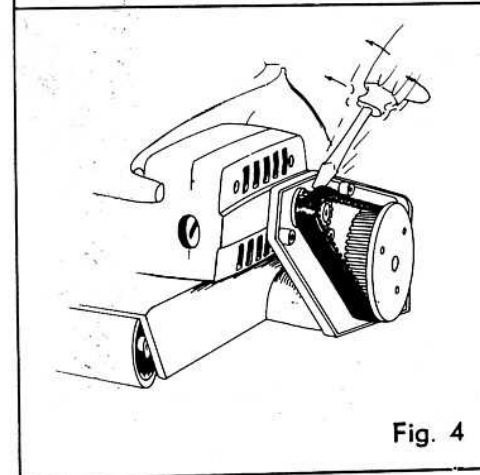


Fig. 4

PREPARING FOR OPERATION

Your Sander is equipped with its own built-in auxiliary handle located at the front of the unit. This handle allows for two-hand use which will aid in maintaining complete control and keeping sanding area level with work piece. (See Fig. 1)

Selecting the correct size and type sanding belt is an extremely important step in achieving a high quality sanded finish. Aluminum oxide, silicone carbide and other synthetic abrasives are best for power sanding.

In general, coarse grit will remove the most material and finer grit will produce best finish in all sanding operations. The condition of the surface to be sanded will determine which grit belt will do the job. If the surface is rough, start with a coarse grit belt sanding until surface is uniform. Medium grit belt may then be used to remove scratches left by the coarser belt and finer grit belt used for finishing of the surface. Always continue sanding with each grit belt until surface is uniform.

INSTALLING AND ADJUSTING SANDING BELT—IMPORTANT—BE SURE POWER CORD IS DISCONNECTED FROM POWER SUPPLY. (See Fig. 2) Release tension on belt by pushing the front pulley squarely against the top or edge of workbench. When the pulley is pushed back it will lock in that position allowing slack in the belt so it can be removed. Install new belt making sure arrow on inside of belt is pointing in the direction of rotation which is clockwise when looking into open side of sander. To put tension on the belt, insert a screwdriver between the idler pulley support bracket and the idler pulley support as illustrated and pry toward front of sander.

To adjust sanding belt, connect sander to power supply. Stand sander on end as illustrated (See Fig. 3), pull switch trigger and release immediately while observing tracking of sanding belt. If sanding belt runs outward turn tracking screw (B) clockwise and counterclockwise if belt runs inward. This should be done until you are sure belt will not come in contact with rub strip. When you are sure belt will not rub against rub strip start sander and fine adjust the tracking screw until belt stabilizes. When correctly adjusted, the outer edge of the belt will be even with the outer edge of sole plate.

Belt life will be increased appreciably if a few seconds are spent adjusting the belt tracking.

TO OPERATE

Clamp or otherwise secure the work to prevent it moving under the Sander. With Sander off work, press the trigger switch and when the motor reaches its maximum speed, lower the Sander on the work with a slight forward motion. Using the main handle to control the Sander and the front handle only to guide it, move it slowly over the work. Allowing the Sander to remain in one place will result in an uneven surface. The Sander was designed to provide the proper weight on the sand belt and extra pressure will only result in uneven work, slow cutting from slow belt speed, clogged belts and possible motor burn-out.

Use the proper belt when heavy cutting is desired, not heavy pressure. The importance of this cannot be over-emphasized, the weight has been built into the tool to give the most efficient pressure at the proper location.

TO REPLACE TIMING BELT—IMPORTANT—BE SURE POWER CORD IS DISCONNECTED FROM POWER SUPPLY. (See Fig. 4) **CAUTION—TO RETAIN ELECTRICAL INSULATION AND PROVIDE USER PROTECTION AS PROVIDED IN ORIGINAL DESIGN, ALL PARTS REMOVED MUST BE REASSEMBLED AND THE REPLACEMENT BELT MUST BE AN IDENTICAL REPLACEMENT PART.**

Should the timing belt become worn or damaged, it can be replaced as follows: Remove two screws, Key No. 44, and belt cover. Key No. 43. Force old belt off small pulley with a screwdriver, taking care not to damage pulley. Remove belt from large pulley. Place new belt over large pulley making sure teeth on belt mesh with teeth on gear. Line up teeth on belt with pulley grooves and press the belt onto pulley. Replace belt cover and tighten screws securely.

CRAFTSMAN 3 INCH BELT SANDER—MODEL NUMBER 315.11720

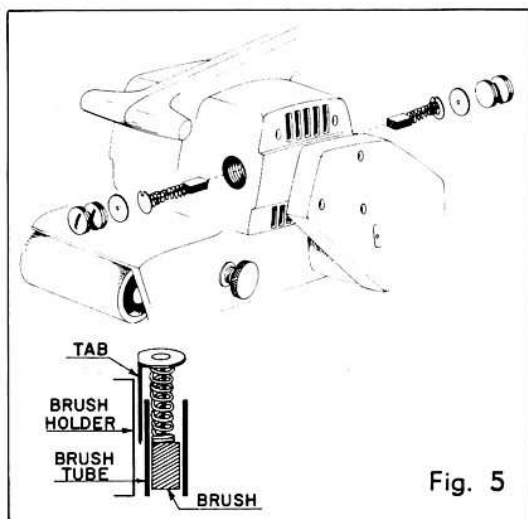


Fig. 5

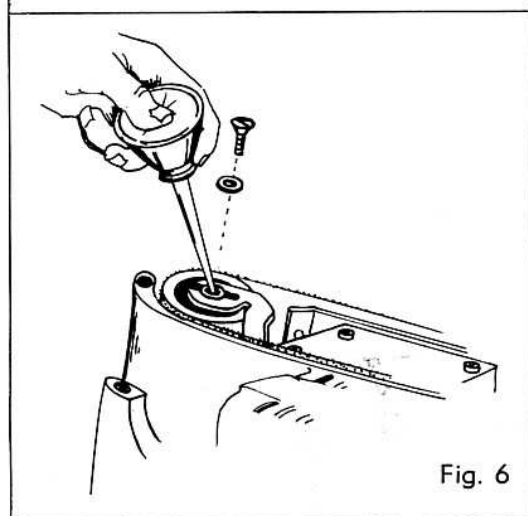


Fig. 6

BRUSH REPLACEMENT—Periodically check the brushes for wear and replace both brushes when either is worn to about $\frac{1}{4}$ inch in length. To check length of brushes they must be removed from tool (see instructions below). Replacement of these relatively inexpensive parts, when necessary, will keep your tool operating more efficiently and prolong the life of the motor.

Replacement of worn-out brushes is considered normal operating maintenance and is not therefore covered by guarantee.

IMPORTANT — BE SURE POWER CORD IS DISCONNECTED FROM POWER SUPPLY. To replace carbon brushes (See Fig. 5), Key No. 37, (See parts list, page 7) unscrew brush caps, Key No. 38, remove washer, Key No. 39. The washer is a tight fit in the brush holder and is used to prevent the brush spring twisting when inserting brush caps. Remove old brush. When replacing new brush with tab make sure tab on brush is inserted in opening between brush tube and brush holder. Make sure curvature of brush matches curvature of the surface of the motor to which it is mated and that the brushes move freely inside brush tube. Be sure brush caps are securely tightened.

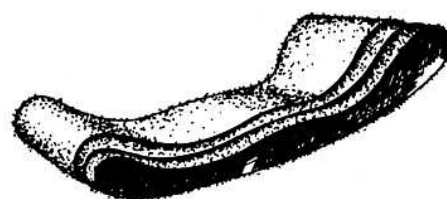
LUBRICATION — (See Fig. 6) Before beginning operation and after four (4) hours of continuous use or after eight (8) hours of intermittent use, this Sander should be lubricated with good quality machine oil. Remove the flat head screw and washer marked (Oil) from the front pulley shaft and put a few drops of oil in the screw hole.

All other bearings in this tool are lubricated with a sufficient amount of high grade lubricant for the life of the unit under normal operating conditions, therefore, no further lubrication is required.

ACCESSORIES ADD GREATER VERSATILITY



CARRYING CASE



ASSORTED SANDING BELTS

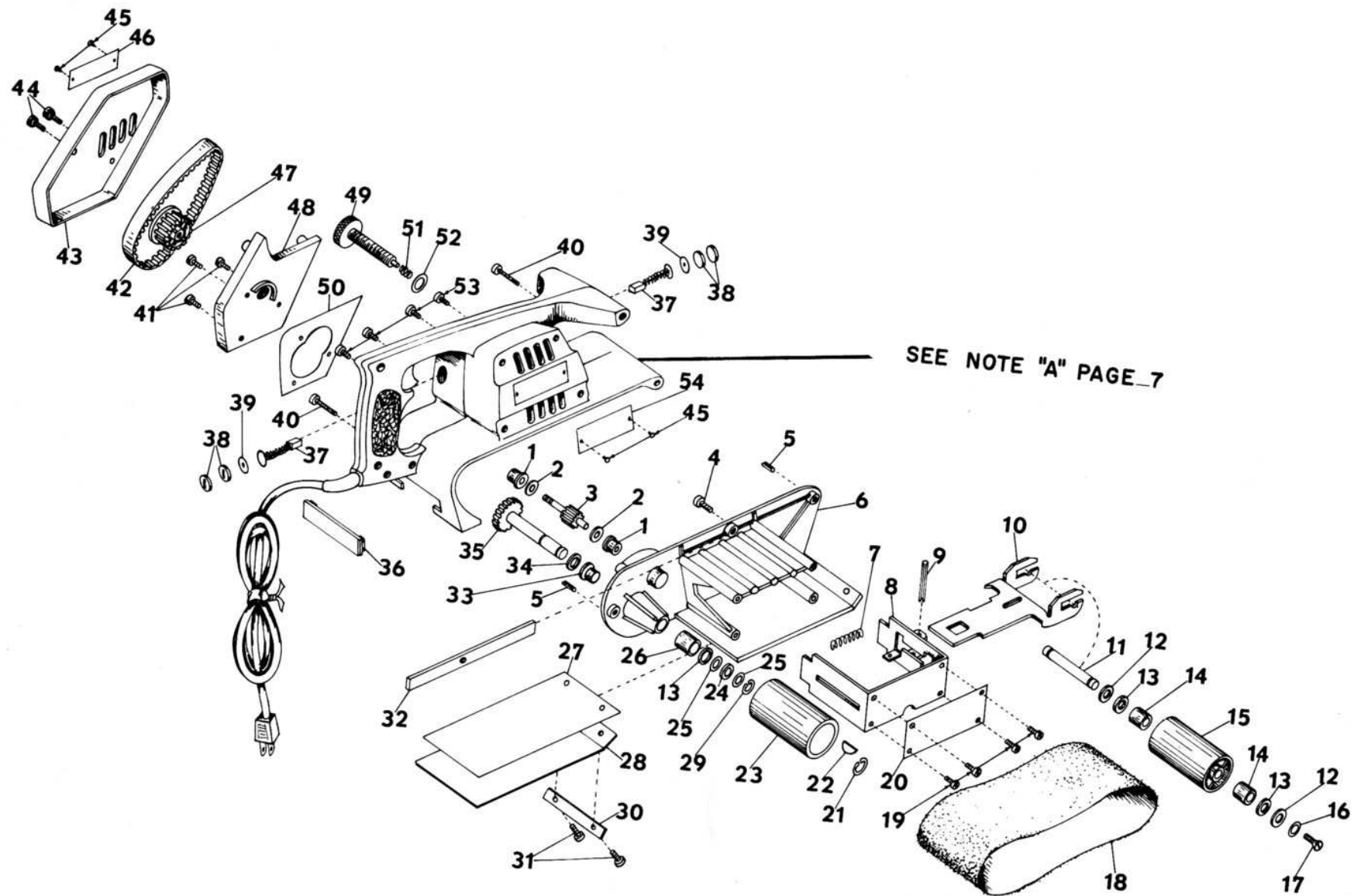


Buy Craftsman Shop Tested Accessories



CORD LOCK

CRAFTSMAN 3 INCH BELT SANDER—MODEL NUMBER 315.11720



FOR PARTS LIST — SEE PAGE 7

CRAFTSMAN 3 INCH BELT SANDER—MODEL NUMBER 315.11720

The Model Number will be found on a plate attached to the side of the sander.
Always mention the Model Number in all correspondence regarding your
SANDER or when ordering repair parts.

SEE BACK PAGE FOR PARTS ORDERING INSTRUCTIONS

PARTS LIST

Key No.	Part Number	Description	Quan.	Key No.	Part Number	Description	Quan.
1	1-622865-01	Flange Bearing	2	28	2-622822-00	Sanding Shoe Pad	1
2	1-706382-805	Washer	2	29	1-620389-03	Retaining Ring	1
3	3-607183-02	Pinion	1	30	1-622814-00	Plate	1
4	1-614661-01	*Screw (#10-32 x 1/2 Flat Hd.)	1	31	1-615954-03	*Screw (#8-32 x 3/8 Pan Hd.)	2
5	1-941401-812	Roll Pin	2	32	1-622813-00	Striker Bar	1
6	3-607169-04	Gear Case (Includes Key Nos. 5, 26, 33 and one Key No. 1)	1	33	1-714043-03	Flange Bearing	1
7	1-622922-00	Spring	1	34	1-706239-807	Thrust Washer	1
8	3-622831-00	Idler Pulley Support Bracket	1	35	1-607795-01	Gear and Shaft	1
9	1-622832-01	Spiral Pin	1	36	2-607195-01	Vacuum Opening Cover	1
10	3-622835-00	Idler Pulley Support	1	37	2-730352-02	Brush Assembly	2
11	2-622840-00	Idler Pulley Shaft	1	38	1-614008-01	Brush Cap	4
12	1-622854-00	Cupped Washer	2	39	1-706382-813	Washer	2
13	1-622853-00	Felt Washer	3	40	1-614658-07	*Screw (#8-32 x 3/4 Pan Hd.)	2
14	1-622805-01	Sleeve Bearing	2	41	1-726693-20	Screw (#8-32 x 3/8 Fil. Hd.)	3
15	2-622804-02	Idler Pulley (Includes Key No. 14)	1	42	2-622827-00	Timing Belt	1
16	1-622862-00	Shaft End Washer	1	43	3-607115-03	Belt Cover	1
17	1-703428-10	*Screw (#8-32 x 3/8 Flat Hd.)	1	44	1-614658-01	*Screw (#8-32 x 3/8 Pan Hd.)	2
18	***	Sanding Belt (3" x 21")	1	45	1-795247-06	Drive Screw	4
19	1-726693-20	*Screw (#8-32 x 3/8 Fil. Hd.)	4	46	1-615801-01	Logo Plate	1
20	2-606917-01	Data Plate	1	47	2-607776-02	Driven Pulley	1
21	1-607461-02	Retaining Ring	1	48	3-607171-05	Gear Case Cover (Includes one Key No. 1)	1
22	2-616452-03	Hi-Pro Key	1	49	1-607453-02	Tracking Screw	1
23	2-614291-01	Pulley	1	50	2-607121-01	Gasket	1
24	1-622205-05	Thrust Washer	1	51	1-622923-01	Spring	1
25	1-706239-813	Thrust Washer	2	52	1-703776-98	Washer	1
26	1-614287-01	Sleeve Bearing	1	53	1-614658-04	*Screw (#8-32 x 1/2 Pan Hd.)	4
27	2-622823-00	Pad Backing	1	54	2-607902-01	Crown Plate	1
					EN690	Instruction Sheet	

NOTE: "A"—The assembly shown represents an important part of the Double Insulated System. To avoid the possibility of alteration or damage to the System, service should be performed by your nearest Sears Electric Motor Shop/Specialty Repair Center. Contact your nearest Catalog Order or Retail Store.

*Standard Hardware Item—May Be Purchased Locally

***Sanding Belts in Assorted Grits for Sanding Both Wood and Metal May Be Obtained from Your Nearest Sears Catalog Order or Retail Store.

Sears

owners manual



REG. TRADEMARK

3 INCH BELT SANDER DOUBLE INSULATED

**MODEL NO.
315.11720**

The Model Number will be found on the plate attached to the side of the sander. Always mention the Model Number when requesting service or repair parts for your Sander.

HOW TO ORDER REPAIR PARTS

All parts listed herein may be ordered through SEARS, ROEBUCK AND CO. and SIMPSON-SEARS LIMITED. When ordering parts by mail, selling prices will be furnished on request or parts will be shipped at prevailing prices and you will be billed accordingly.

WHEN ORDERING REPAIR PARTS, ALWAYS GIVE THE FOLLOWING INFORMATION AS SHOWN IN THIS LIST.

1. The PART NUMBER
2. The PART DESCRIPTION
3. The MODEL NUMBER—315.11720
4. The NAME of ITEM—3" BELT SANDER

All fine tools, on occasion, may require service or the replacement of parts due to wear from normal use. To prolong the life of your tool when repairs are needed, call on your nearest Sears Catalog Order or Retail Store. Please do not risk possible electrical hazards, additional cost or damage to the tool through inexperienced repairs.

**SEARS SERVICE
IS AT YOUR SERVICE
WHEREVER YOU LIVE
OR MOVE
IN THE U.S.A.**

Your Sears merchandise takes on added value when you discover that Sears has over 2,000 Service Units throughout the country. Each is staffed by Sears — trained, professional technicians using Sears approved parts and methods.

SEARS, ROEBUCK AND CO.—Chicago, Illinois 60607 U.S.A.
and SIMPSON-SEARS LIMITED—Toronto