

Maelsrig

Smart Light Bulb
E17 Base

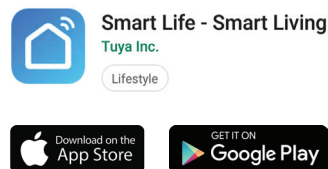
Quick & Easy
start guide

Turn on the Bluetooth

Connect to your Wi-Fi network
of 2.4GHz (Not 5.0GHz).

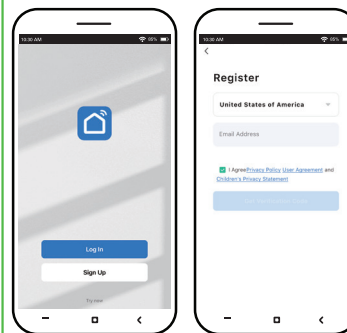
1 Download

Download the **Smart Life-Smart Living** App
from the App store or Google Play.



2 Register / Login

Log in or Enter your email address to register.



3 Light it up

Make your smart bulb in search mode.

Turn on the bulb for the first time:

Case 1

The bulb is blinking, indicating that the
bulb is in search mode.

Case 2

The bulb usually goes on without blinking
You must close and open the switch 3
times in a row to enter search mode.

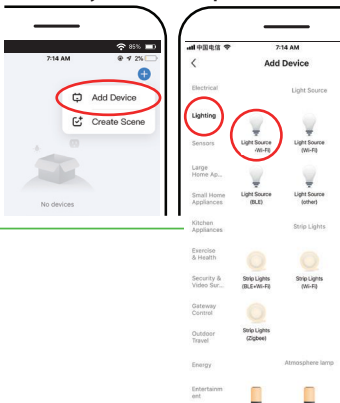
**You can also follow the instructions
on the application.**

4 Add the Device

1. Select the "+" symbol on the top right corner
 2. Select "**Lighting**"
 3. Select "**Light Source(Wi-Fi)**"
- Then, follow the instructions to pair the device.

Note:

**Please ensure the Wi-Fi account name and
password you enter afterward are entirely
correct. (Pay attention to capitalization)**



5 Setting up a third-party for your voice assistant

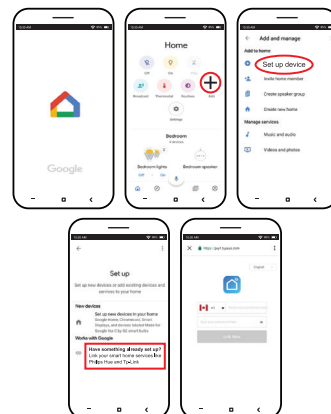
In the "Smart life" menu, go to the "ME" page
followed by "More Service" mode to help you
select your voice assistant step by step.

From your **Google Home** application:

1. In the home menu select the symbol "+"
following "Set up device."
2. Find the Smart Life app and select "Enable."
3. Enter the same registry that you previously
used in the Smart Life app.

You can now say commands such as:

"OK Google, dim the bedroom lights to 10%"
"Ok Google, turn on / off the lights in
my bedroom."



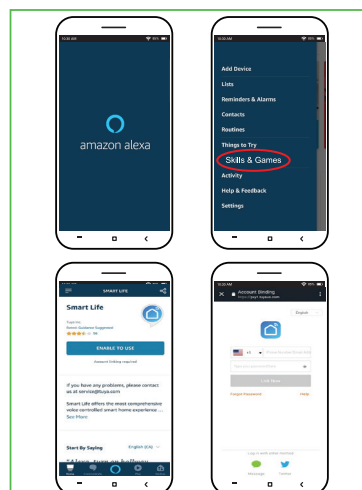
Or;

From your **Amazon Alexa** application:

1. In the "Skills" menu search for the
Smart Life app and select "Enable."
2. Enter the same registry that you
previously used in the Smart Life app.

You can now say commands such as:

"Alexa, dim the lights of the kitchen to 10%."
"Alexa, turn on / off the lights in my room."



This device complies with Part 15 of the FCC Rules. Operation is subject to the following two conditions: (1) this device may not cause harmful interference, and (2) this device must accept any interference received, including interference that may cause undesired operation

NOTE: This equipment has been tested and found to comply with the limits for a Class B digital device, pursuant to Part 15 of the FCC Rules. These limits are designed to provide reasonable protection against harmful interference in a residential installation. This equipment generates, uses and can radiate radio frequency energy and, if not installed and used in accordance with the instructions, may cause harmful interference to radio communications. However, there is no guarantee that interference will not occur in a particular installation.

If this equipment does cause harmful interference to radio or television reception, which can be determined by turning the equipment off and on, the user is encouraged to try to correct the interference by one or more of the following measures:

- Reorient or relocate the receiving antenna.
- Increase the separation between the equipment and receiver.
- Connect the equipment into an outlet on a circuit different from that to which the receiver is connected.
- Consult the dealer or an experienced radio/TV technician for help.

Warning: changes or modifications not expressly approved by the party responsible for compliance could void the user's authority to operate the equipment

Radiation Exposure Statement

This equipment complies with FCC radiation exposure limits set forth for an uncontrolled environment.

This equipment should be installed and operated with minimum distance 20cm between the radiator and your body.