

Operation Guidance

UI introduction

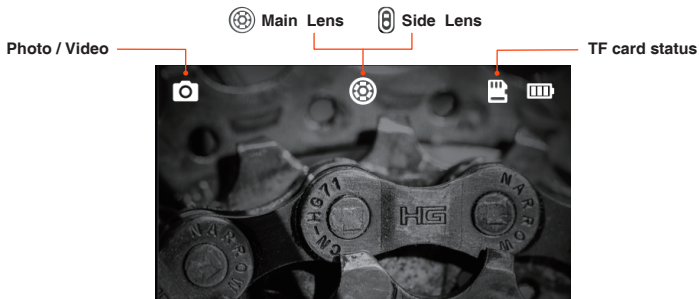




Photo / Video:

Take photos by pressing the   button, long press 2S to start video recording, single press to end video recording.

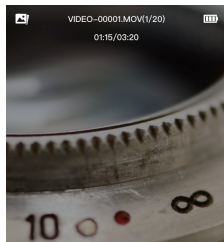
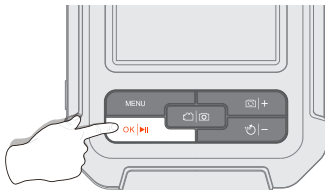


Operation Guidance

View Photos:

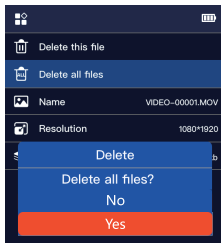
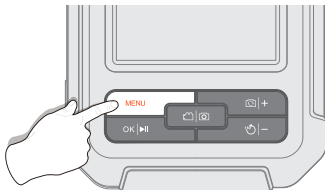
Long press **OK** | **▶** in preview mode to enter the photo album, and press **—** | **◀** | **+** | **▶** to view photos.

Long press **OK** | **▶** again to exit the photo album.





Delete Photos:

When viewing photos, press **MENU** to choose to delete the current photo or delete all photos, and press **MENU** again to return to the album.





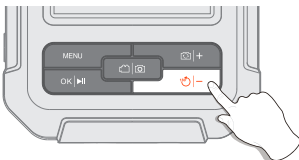
Operation Guidance

Screen Rotation:

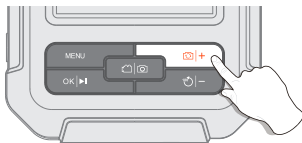
Long press the   button, and the image will rotate 180°.

Lens Switching (only applicable to double-lens products):

Long press the   button to switch among main lens, side lens.








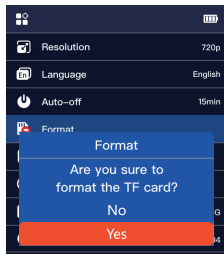
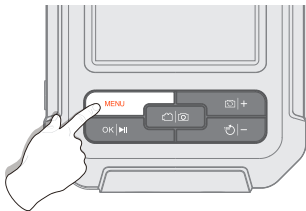
Screen Rotation



Lens Switching

TF Card Formatting:

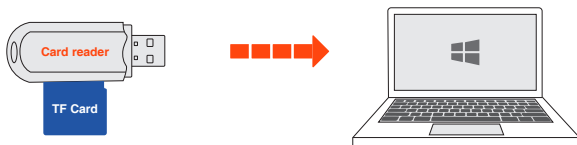
Press **MENU** to enter the menu interface, press   or   to select Format options, and then press **OK**  to enter the option interface.



Operation Guidance

Copy photo and video files to computer

The device does not support USB data cable to transfer data, you can use a TF card reader to copy data directly.

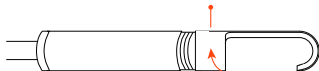


Guide for Accessories Installation

Turn counterclockwise-remove protect cap



Turn clockwise-tighten accessories



Please read the instruction manual carefully before using this product!