

R E P L A Y

ES-5520-1

SPEEDSTAR

Electronic Scooter



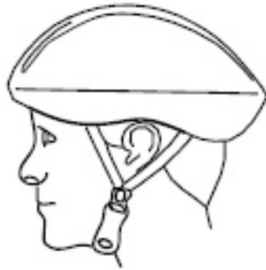
Instruction Manual

PLEASE READ ALL INSTRUCTIONS CAREFULLY AND
RETAIN FOR FUTURE USE

HELMET SAVES LIVES!

Always wear a properly fitted helmet certified by CPSC (Consumer Product Safety Commission) when you ride your scooter.

Correct Fitting: Make sure your helmet covers your forehead.



Incorrect Fitting: Forehead is exposed and vulnerable to serious injury.



WARNING

PLEASE READ THE INSTRUCTION MANUAL THOROUGHLY.

Thank you for purchasing the SPEEDSTAR Scooter. Failure to follow the basic instructions and safety precautions listed in the instruction manual can lead to damage to your device, other property damage, serious bodily injury and even death. Please retain this manual for future use and reference.

ATTENTION

1. Use only the supplied charger with this scooter. Use of any other charger may create fire or explosion.
2. The operating temperature range of the scooter is 32-104°F(0-40°C).
3. Always wear shoes, helmet and appropriate safety gear such as knee and elbow pads
4. Do not operate under the influence of drugs or alcohol
5. You must comply with local laws and give way to pedestrians
6. Do not ride without proper training. Do not ride at high speeds, on uneven terrain, or on slopes.
7. Do not ride on icy or slippery surfaces.
8. Do not ride "double" with more than one rider on the scooter. Do not perform stunts or stop abruptly.
9. Do not operate near swimming pools or other bodies of water.
10. Read the instruction manual and warning labels before riding.
11. Store the scooter in a dry, ventilated environment.
12. When transporting the scooter, avoid violent crashes or impact.

LOW TEMPERATURE WARNING

Low temperature will affect the lubrication of moving parts inside the scooter, increasing internal resistance. At the same time, in low temperatures, the discharge capacity and the capacity itself of the battery will be significantly decreased.

Use caution when riding the scooter in cold temperatures (below 40 degrees F).

Doing so may increase the risk of mechanical failures of the scooter, which may lead to damage to your device, other property damage, serious bodily injury and even death.

SAFETY INSTRUCTIONS

- Keep the device away from heat sources, direct sunlight, humidity, water and any other liquids.
- Do not operate the device if it has been exposed to water, moisture or any other liquids to prevent against electric shock, explosion and/or injury to yourself and damage to the device.
- Do not use the device if it has been dropped or damaged in any way.
- Repairs to electrical equipment should only be performed by the manufacturer or approved repair center. Any improper or unauthorized repairs void the warranty and may place the user at serious risk of injury.
- Do not puncture or harm the exterior surface of the product in any way.
- Keep the device free from dust, lint, etc.
- Do not use this device for anything other than its intended use or purpose. Improper use may damage the device or lead to property damage, serious injury or death.
- This product is not a toy. Keep out of the reach of children.
- Do not expose batteries, battery pack, or installed batteries to excessive heat, such as direct sunlight, or open flame.
- Do not allow hands, feet, hair, body parts, clothing or similar articles to come in contact with moving parts, wheels or drive train, while the engine is running.
- Do not operate or allow others to operate the scooter, until the user understands all instructions, warnings and safety features described in this manual.
- Check with your doctor if you have a medical condition that could affect your

ability to use this scooter.

- Persons with head, back or neck ailments or prior surgeries to those areas of the body are not recommended to use this scooter and should consult a medical professional before using this scooter.
- Do not operate if you are pregnant, have a heart condition, or have both.
- Persons with any mental or physical conditions that may make them susceptible to injury or impair their physical or mental capabilities to recognize, understand and perform all of the safety instructions and to be able to assume the hazards inherent in unit use, should not use this scooter.

GETTING STARTED

- Remove the product from the box.
- Please retain all packaging after you have checked and counted all the parts and the contents against the list.

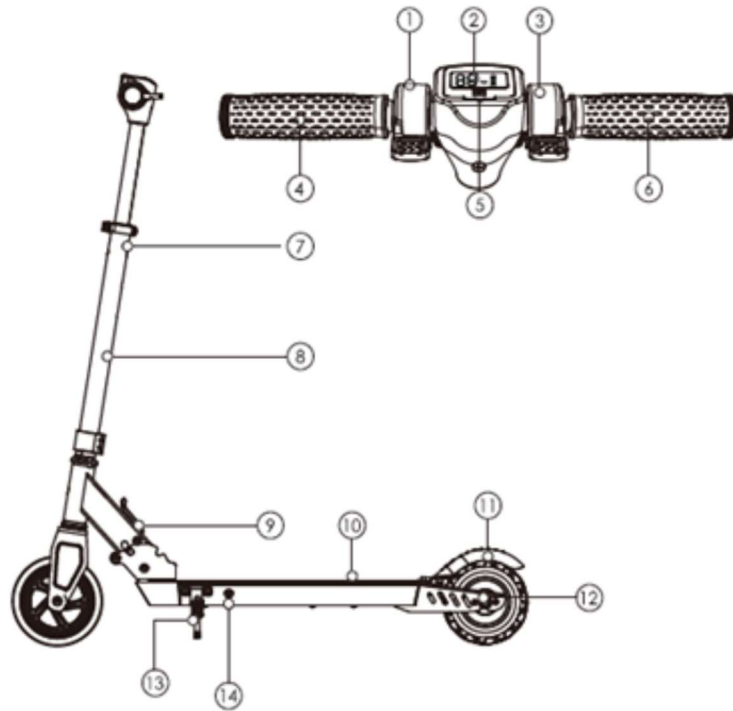
PACKAGE CONTENTS

- Scooter
- Wall Charger
- Handlebars (L & R)
- Hex Key
- Instruction Manual

KEY FEATURES

- Electric Scooter
- LCD display for current speed and battery level
- Built-in rechargeable battery

DESCRIPTION OF PARTS



| | | | |
|---|----------------|----|------------------|
| 1 | Electric Brake | 8 | Steering Column |
| 2 | LCD Display | 9 | Release Lever |
| 3 | Throttle | 10 | Footpad |
| 4 | Handlebar (L) | 11 | Mechanical Brake |
| 5 | Power Button | 12 | Rear Hub Motor |
| 6 | Handlebar (R) | 13 | Kickstand |
| 7 | Locking Clamp | 14 | Charge Port |

DISPLAY AND CONTROLS



| | | |
|---|----------------|--|
| 1 | Electric Brake | Reduces your speed by slowing down the motor |
| 2 | LCD Display | Shows current speed, and battery level |
| 3 | Throttle | Accelerates the scooter |
| 4 | Handlebar (L) | Left handle |
| 5 | Power Button | Press and hold 1 second to turn on/off the scooter |
| 6 | Handlebar (R) | Right handle |

INSTRUCTIONS FOR USE

Please read the following instructions carefully.

BATTERY SPECIFICATIONS

Battery Type: Rechargeable lithium-ion battery

Fully Charging Time: 5 hours

Voltage: 25.2V

Initial Capacity: 4.0 Ah

BATTERY POWER

You must stop driving your Scooter, if it displays low power, otherwise it may affect performance.

- Do not use the battery if it emits an odor.
- Do not use the battery if it is leaking.
- Do not allow children or animals near the battery.

- Remove the charger prior to driving.
- The battery contains dangerous substances. DO NOT OPEN THE BATTERY. DO NOT INSERT ANYTHING INTO THE BATTERY.
- Only use the charger that was provided with the Scooter. DO NOT USE ANY OTHER CHARGERS.
- Do not charge a battery that has been overly discharged.
- Dispose of the battery in accordance with local laws.

CHARGING

Only use the charger that was provided with your Scooter.

- Ensure that the charging port is dry.
- Plug the charging cable into the Scooter.
- Connect the charging cable to the power supply.
- The red light indicates that it has begun charging. If the light is green, check whether the cable is connected correctly.
- When the indicator light turns from red to green, this indicates that the battery is fully charged. At this time, please stop charging. Overcharging will affect performance.
- Use a standard AC outlet.
- Charging time up to 5 Hours.
- Keep the charging environment clean and dry.

ASSEMBLING THE SCOOTER

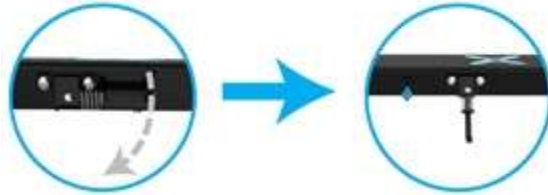
FOLDING & UNFOLDING THE UNIT

Pull and hold the release lever near the front of the foot pad, and lift the steering column up to unfold or pull them down to fold. You will hear a click sound in both directions, this means it is now locked in place.



OPENING THE KICKSTAND

Locate the kickstand on the left side of the foot pad. Swivel it down completely so that it supports the weight of scooter while you continue to assemble it.



ATTACHING THE HANDLEBARS

Attach the handlebars by placing them into the appropriate positions and twisting them in the correct direction. They should be tight enough that they will not loosen while riding.



TURNING ON/OFF THE SCOOTER

Power On: Place the scooter on a flat surface. To turn on your scooter, Press and hold the power button 2 seconds to turn on, check the battery level light should be

lit, indicating the device is powered on.

Power Off: Press and hold the power button 2 seconds to turn off.

RIDING THE SCOOTER

Power on the scooter, you must first kick off the ground and then press the throttle for the motor to start. To slow down the scooter, press the brake.

Note:

- If the handlebars do not attach flush to the frame, you may need to shift the location of your throttle and brake assembly appropriately.
- Tighten or loosen the throttle and brake assembly with a hex key and make sure they are not touching or blocking your handlebars from being tightened completely. Fully charge your scooter for up to 5 hours before using it for the first time.
- Before turning on the unit, ride it like a normal kick scooter to get comfortable with the device.

BEFORE RIDING

It is important that you fully understand all elements of your scooter. If these elements are not used correctly, you will not have full control of your scooter. Before you ride, learn the functions of the various mechanisms on your scooter.

Practice using these elements of your scooter at slower speeds in a flat, open area before taking the device out in public areas.

PRE-RIDE CHECKLIST

Ensure that your scooter is in proper working order each and every time you ride. If a part of the scooter does not function correctly, please contact our customer support center.

- Ensure the battery is fully charged before riding your scooter.
- Please wear all appropriate safety and protective gear as previously mentioned in the instruction manual before operating your scooter.

- Make sure to wear comfortable clothes and flat closed-toe shoes when operating your scooter.
- Please read carefully the Instruction Manual, which will assist in explaining the basic working principles and provide tips on how to best enjoy your experience.

SAFETY PRECAUTIONS

Different localities and countries have different laws governing riding on public roads, and you should check with local officials and familiarize yourself with local rules to ensure you are complying with these laws.

REPLAY is not liable for tickets or violations given to riders who do not follow local laws and regulations.

- For your safety, always wear a helmet and wrist guards that meet CPSC safety standards. In the event of an accident, a helmet and wrist guards can protect you from serious injury and in some cases, even death.
- Obey all local traffic laws. Obey red and green lights, one-way streets, stop signs, pedestrian crosswalks, etc.
- Give pedestrians the right-of-way.
- Do not ride too close to pedestrians and alert them if you intend to pass them from behind.
- Your scooter is not equipped with reflectors. It is not recommended that you ride in conditions of low visibility or when it is dark.

Think about safety when you ride. You can prevent many accidents if you think about safety. Below is a helpful checklist for compact riders.

SAFE DRIVING

Carefully read the following safety precautions prior to operating your Scooter:

- When you are driving the Scooter, make sure to take all necessary safety measures, such as wearing a CPSC certified helmet, knee pads, elbow pads, and other protective gear.
- The Scooter should only be used for personal use and is not designed for

commercial applications, or for use on public roads or pathways.

- You are prohibited from using the Scooter on any roadway. Check with your local authorities to confirm where you can safely ride. Obey all laws that apply.
- Do not allow children, the elderly, or pregnant women to ride the Scooter.
- Do not drive the Scooter under the influence of drugs or alcohol.
- Do not carry items when driving your Scooter.
- Be alert of obstacles in front of you.
- Legs should be relaxed, with your knees slightly bent to help you balance.
- Make sure your feet are always on the mats.
- The Scooter should only be driven by one person at a time.
- Do not exceed the maximum load.
- Keep a safe distance from others while driving your Scooter.
- Do not engage in distracting activities while driving your Scooter, such as talking on the phone, listening to headphones, etc.
- Do not drive on slippery surfaces.
- Do not make reverse turns at high speeds.
- Do not drive in dark places.
- Do not drive over obstacles (twigs, litter, stones, etc.).
- Do not drive in narrow spaces.
- Avoid driving in unsafe locations (around flammable gas, steam, liquid, etc.).
- Check and secure all fasteners prior to driving.
- The Scooter is recommended for riders ages 15 and older.

WEIGHT AND SPEED LIMITATIONS

Speed and weight limits are set for your own safety. Please do not exceed the limits listed here in the manual.

- Maximum Weight: 150 lbs.
- Minimum Weight: 44 lbs.
- Maximum Speed: Up to 10 mph

OPERATING RANGE

The scooter can travel a distance up to 5 miles on a fully charged battery in ideal conditions. The following are some of the major factors that will affect the operating range of your device.

- **Terrain:** Riding distance is highest when riding on a smooth, flat surface. Riding uphill and/or on rough terrain will reduce distance significantly.
- **Weight:** A lighter user will have further range than a heavier user.
- **Ambient temperature:** Please ride and store the device under recommended temperatures, which will increase driving distance; battery life, and overall performance of your device.
- **Speed and riding style:** Maintaining a moderate and consistent speed while riding produces maximum distance. Traveling at high speeds for extended periods, frequent starts and stops, idling and frequent acceleration or deceleration will decrease overall distance.

SAFETY ALERTS

While riding your scooter, if there is a system error or illegal operation performed the device will prompt the user in a variety of ways.

The following are common occurrences where you will hear the safety alerts. These notices should not be ignored, but appropriate action should be taken to correct any illegal operation, failure or errors.

- Unsafe riding surfaces (uneven, too steep, unsafe, etc.)
- Battery voltage is too low.
- The device is still under charging.
- Overheating, or motor temperature is too high.

CARE & MAINTENANCE

- Do not expose the device to liquid, moisture, or humidity to avoid damage to the product's internal circuitry.
- Do not use abrasive cleaning solvents to clean the device.
- Do not expose the device to extremely high or low temperatures as this will shorten the life of the electronic device, destroy the battery, and/or distort certain plastic parts.
- Do not dispose of the device in fire as it may explode or combust.
- Do not expose the device to contact with sharp objects as this will cause scratches and damage.
- Do not allow the device fall from high places, as doing so may damage the internal circuitry.
- Do not attempt to disassemble the device.

SPECIFICATIONS

Unfolded size: (W)33.7x(D)14.5x(H)37.4inch (85.6x36.9x94.8 cm)

Folded size: (W)31.4x(D)14.96x(H)10.6inch (80x38x27 cm)

Net Weight: 22 lbs. (10 kg)

Max supported weight: 150 lbs. (68 kg)

Max Speed: Up to 10 mph (16 km/h)

Max Distance Range: 5 miles (8 km)

Battery Type: Lithium-ion

Battery Voltage: 25.2V

Battery Capacity: 4.0 Ah

Power Requirement: AC 100-240V, 50/60 Hz

Tire Type: Non-Pneumatic Solid Tires

Tire size: 6 Inches Front (15.24cm), 5.5 Inches Back (13.97cm)

Brake Type: Electronic & Mechanical Brakes

FCC INSTRUCTIONS

Caution: Changes or modifications not expressly approved by the party responsible for compliance could void the user's authority to operate the product.

NOTE: This product has been tested and found to comply with the limits for a Class B digital device, pursuant to Part 15 of the FCC Rules. These limits are designed to provide reasonable protection against harmful interference in a residential installation. This product generates, uses and can radiate radio frequency energy and, if not installed and used in accordance with the instructions, may cause harmful interference to radio communications. However, there is no guarantee that interference will not occur in a particular installation. If the product does cause harmful interference to radio or television reception, which can be determined by turning the equipment off and on, the user is encouraged to try to correct the interference by one or more of the following measures:

- Reorient or relocate the receiving antenna.
- Increase the separation between the product and receiver.
- Connect the product into an outlet on a circuit different from that to which the receiver is connected.
- Consult the dealer or an experienced radio/TV technician for help.

This device complies with Part 15 of the FCC Rules. Operation is subject to the following two conditions: (1) this device may not cause harmful interference, and (2) this device must accept any interference received, including interference that may cause undesired operation.

LIMITED WARRANTY

This product comes with a 120-day limited parts and labor warranty for manufacturer's defects. This includes defects to the motor, gyroscopic sensor, battery, motherboards, lights, controller and Bluetooth® module.

The conditions of this warranty and our responsibilities under this warranty are as follows:

Manufacturer's warranty is non-transferable and is limited to the original purchaser

only. Manufacturer warranty only applies to products purchased through an authorized REPLAY retailer. Items purchased from private sellers, online auction sites, including eBay, liquidators, sold "as-is" or "final sale" or from clearance or going-out-of-business sales, are not covered by manufacturer warranty. The warranty period begins on date of purchase, not date of first use. Please retain a copy of your receipt as this will be required to proof of purchase and date of purchase should a warranty claim be needed.

- The warranty is not applicable if the product has been subject to improper use or physical abuse to product, improper installation, assembly, modification or repair by unauthorized third party.
- The responsibility of manufacturer shall be limited to the repair or replacement of the product at its sole discretion.
- The manufacturer will not take any responsibility if the failure of the unit has resulted from accident, abuse, misuse, or any unauthorized repair, modification or disassembly.
- This warranty gives you specific legal rights, and you may also have other rights which vary under local laws. The following conditions comprise the requirements and scope of our warranty conditions and do not affect our legal and contractual warranty obligations.

We offer a warranty on our products in accordance with the following conditions:

1) The warranty does not cover over-charging, or damages due to improperly maintaining lithium-ion battery installed in unit. The warranty does not cover tires, charge ports and other parts, which are considered consumables, parts that break easily such as glass or plastic or defects based on normal wear and tear. There is no warranty obligation in the event of marginal differences compared to the target appearance and workmanship provided these have a negligible effect on the product's fitness for use, in the event of damage caused by chemical or electrochemical effects, by water, moisture, debris or generally from abnormal

conditions.

2) The warranty will be performed in such a way that we shall decide whether to repair the defective parts or to replace them with working parts. REPLAY reserves the right to exchange the product for a replacement product of equal or greater value if the product cannot be repaired within a reasonable time or at a reasonable cost. Products and/or parts that have been replaced or exchanged become property of REPLAY.

3) The warranty is voided if repairs or modifications are performed without the written consent of REPLAY or if our products are equipped with additional parts or accessories that are not approved for the REPLAY. Using any charger, other than a genuine REPLAY charger, or a charger for a different model, voids the warranty and is a serious fire hazard. Exposure to water, moisture, mud, dirt or debris, voids the warranty.

4) Warranties that have been activated do not cause the warranty period to be extended, nor do they trigger a new warranty period. The warranty period for any replacement parts installed ends with the warranty period for the entire product.

5) Any other further claims are excluded, especially those for replacement due to damage caused to the outside of the product, provided there is no obligatory legal liability.

We therefore accept no liability for accidental, indirect or other consequential damage of any kind, which leads to usage restrictions, data loss, and loss of earnings or interruption to business. If you have purchased an extended warranty, you will need to contact the retailer it was purchased from for assistance.

Asserting a warranty claim:

1) To make use of the warranty services, you must contact the REPLAY Service Center by visiting www.flyreplay.com. Please contact Replay Customer Service at info@flyrepelay.com or by calling (888) 451-0954.

2) REPLAY will try to diagnose and solve your problem. We may require photos and/or videos to properly diagnose the issue and verify warranty eligibility. A copy of your receipt or online order confirmation, with purchase date visible, is required.

REPLAY reserves the right to verify purchases with the retailer and/or asset protection databases, and will deny warranty claims if the receipt is invalid, cannot be verified, or if the item has been returned or exchanged. If it is determined that a warranty claim exists, at our sole discretion, REPLAY may send replacement parts and or issue an RMA number (Return Material Authorization) to send the product to REPLAY. If an RMA is issued, the package must be shipped within 14 days of the RMA issuance or the package will be refused and returned to sender. If, at the sole discretion of REPLAY's technicians, the item is found not to have a manufacturer defect, has been subject to abuse, the malfunction is due to water, debris or moisture exposure, or the item has been improperly maintained, customer will be charged for return shipping and no repairs will be completed.

IMPORTANT: REPLAY will only accept parcels that have an RMA number.

The limited warranty stated above is only valid for products sold in the Contiguous U.S. by REPLAY or its authorized resellers. Items purchased in Alaska, Hawaii and Puerto Rico have shipping restrictions on batteries and we cannot ship replacement units or batteries outside of the Contiguous U.S.

YOU EXPRESSLY UNDERSTAND AND AGREE THAT, TO THE MAXIMUM EXTENT PERMITTED BY APPLICABLE LAW, REPLAY'S TOTAL LIABILITY IN CONNECTION WITH THE APPLICABLE REPLAY PRODUCTS OR THIS WARRANTY POLICY WILL NOT EXCEED THE AMOUNT YOU ACTUALLY PAID FOR THE PRODUCT.

Remarks: REPLAY reserves the right, at its sole discretion, to interpret, modify and amend this warranty policy at any time.

PARTS AVAILABILITY IS NOT GUARANTEED