



Instruction Manual  
ELECTRIC KNIFE SHARPENER

---

Návod k obsluze  
ELEKTRICKÝ BROUSEK NA NOŽE

---

Návod na obsluhu  
ELEKTRICKÁ BRÚSKA NA NOŽE

---

Használati útmutató  
ELEKTROMOS KÉSÉLEZŐ

---

Instrukcja obsługi  
ELEKTRYCZNA OSTRZAŁKA DO NOŻY

---

## ELECTRIC KNIFE SHARPENER



EB 900

# **ELECTRIC KNIFE SHARPENER**

## TABLE OF CONTENTS

4	Catler Recommends Safety First
7	Know Your EB 900 Knife Sharpener
8	Using Your EB 900 Knife Sharpener
11	Care and Cleaning

## CATLER RECOMMENDS SAFETY FIRST

We understand the importance of safety and that's why we put your safety first from the initial design concept to the production itself. Nevertheless, please be careful and follow the instructions below when using this appliance.

- This appliance is not to be used by children. Keep this appliance and its power cord out of children.
- This appliance may be used by persons with physical, sensory, mental impairments or by inexperienced persons, if they are properly supervised or have been informed about how to use of the product in a safe manner and understand the potential dangers.
- Children must not play with the appliance.
- Cleaning and maintenance performed by the user must not be performed by children.
- If the power cord is damaged, it must be replaced by the manufacturer, their service technician or by a similarly qualified person to prevent the occurrence of a dangerous situation.

**WARNING:** There is a risk of serious injury if used incorrectly.

- Always disconnect the appliance from the power socket if you are leaving it unattended and before assembly, disassembly or cleaning.

- This appliance is designed for sharpening knife blades in the home. Do not use it for purposes other than those for which it was designed. Do not use it for commercial or laboratory purposes. Do not use the product outdoors.
- Before plugging the power cord plug into the mains socket, make sure that the voltage on the type plate matches the voltage in your mains socket.
- Only plug the power cord plug into a properly grounded outlet. Do not use adapters or extension leads.
- To avoid the risk of electric shock, do not immerse the appliance, power cord or plug in water or other liquid.
- Switch the appliance off using the power switch and then pull the power cord plug out of the mains socket. Never switch off the appliance by pulling the power cord plug out of the mains socket.
- Always pull the power cord plug out of the power outlet by grasping the plug, not by pulling the power cord. Otherwise, there is a risk of damage to the power cord or power socket.
- The mains socket must remain freely accessible so that the appliance can be disconnected from the power supply if necessary.
- Do not leave the power cord hanging over the edge of a table or a work bench.
- Make sure that the power cord does not touch a hot surface (e.g. the hob).
- Route the power cord so that it cannot be tripped over. The knife sharpener could tip over during sharpening and cause serious injury.
- Do not use the appliance near water, such as a sink or washbasin. Make sure that no liquid enters it.
- Do not use the appliance in dusty or humid environments. Do not use open flames, ignition sources or explosive, flammable or volatile substances near the appliance.
- Always place the appliance on a dry, level and firm place. Make sure there is clearance around the appliance.
- Do not place the appliance on a hot surface (e.g. on a hob, stove, etc.) or near heat sources.
- Do not touch the sharpening wheels. There is a risk of serious injury. Keep fingers, hands, hair, loose clothing, jewellery etc. well away from the sharpening wheels, especially when the appliance is in operation.

**WARNING:** The knife blades are very sharp. There is a risk of serious injury from improper handling.

**WARNING:** Never insert the blade tip first into the sharpening wheels. There is a risk of recoil, which can cause damage to the appliance or serious injury.

- If the appliance gets excessively hot during use, turn it off with the switch and pull the plug from the mains socket. Let the appliance cool down before using it again.
- It is forbidden to modify the appliance, change its technical parameters or otherwise modify it.

- If the appliance is not working properly, is broken, or the power cord or plug is damaged, turn it off with the power switch and pull the plug from the power outlet. Contact an authorised service centre to have it repaired. Never repair the appliance yourself. It does not contain any parts that can be repaired by the user.

#### **IMPORTANT SAFETY INSTRUCTIONS FOR USING ELECTRICAL EQUIPMENT**

- Fully unwind the power cord before use.
- Do not leave the power cord hanging over the edge of a table or countertop or allow it to touch a hot surface or to become tangled up. Do not put heavy objects on the power cord.
- For safety reasons, we recommend to connect the appliance in an independent electrical circuit separated from other appliances. Do not use adapter plugs or extension cables to connect the appliance to a power socket.
- To prevent electric shock, do not immerse the appliance, its base or the power cord in water or other liquids.
- We recommend that you inspect the appliance regularly. Do not use the appliance if it is damaged in any way or if the power cord or plug is defective. All repairs or adjustments must be performed at the nearest Catler authorised service centre.
- Any maintenance other than standard cleaning must be performed at authorised Catler service centre.
- We recommend to install a residual current device (standard safety switches in your power outlet) to provide a higher level of protection when using the appliance. We recommend to install a residual current device (with a nominal residual operating current of no more than 30mA) in the electric circuit in which your appliance is to be connected. For further expert advice, please contact your electrician.

**Instructions are also available at [www.catler.eu](http://www.catler.eu).**

## KNOW YOUR EB 900 KNIFE SHARPENER



- |                                 |   |
|---------------------------------|---|
| 1. Knife sharpener body         | 5. Power switch                         |
| 2. Wheels for coarse sharpening | 6. Metal waste compartment (underneath) |
| 3. Wheels for fine sharpening   | 7. Antiskid silicone feet               |
| 4. Blade polishing wheels       |   |

## USING YOUR EB 900 KNIFE SHARPENER

### BEFORE FIRST USE

Before first use, remove all packaging and advertising labels/stickers from the appliance. Wipe the outer surface of the appliance with a soft sponge slightly dampened with warm water.

### PURPOSE OF USE

The Catler EB 900 is suitable for sharpening:

- Chinese-type knives;
- European-type knives;
- Japanese knives;
- ceramic knives.

Do not use the knife sharpener to sharpen sport, serrated or electric knives, scissors or blades that do not fit into the sharpening holes.

### THE PRINCIPLE OF SHARPENING

Knife sharpening is divided into three stages: coarse sharpening, fine sharpening and polishing.

#### Stage 1

The unevenness and curvature of the blade is removed. This stage is particularly suitable if the knives are dull.

#### Stage 2

The sharpening process is completed, creating a sharp and precise blade. This stage is suitable for finishing the sharpening of everyday knives.

#### Stage 3

The blade is polished and dirt is removed during the first two stages.

### SHARPENING PROCEDURE

1. Place the knife sharpener on a dry, clean and solid surface (e.g. a table top or kitchen counter) well away from the power socket. Make sure that the metal waste compartment cover is correctly fitted.
2. Clean the knife you are going to sharpen with a clean cloth. It is important that the blade is dry and clean, free of dirt, grease, etc.
3. We recommend that you run the blade through all the holes before turning on the knife sharpener to see where and how the blade will contact the sharpening wheels.
4. Insert the power plug into a properly grounded power socket.
5. Switch on the knife sharpener with the switch. A light on the switch indicates that the knife sharpener is switched on.





## WARNING!

Always switch on the knife sharpener first and then insert the blade of the knife into the holes with the discs. Otherwise, recoil and damage to the knife, the knife sharpener or serious injury may occur.

6. Hold the knife to be sharpened in one hand and hold the knife sharpener with the other hand.

7. **Coarse sharpening:**

Insert the wide end of the knife near the handle into the left roughing hole and pull slowly towards you. Do not apply excessive pressure to the knife. The pressure should be constant and reasonable. Make sure that the blade remains in contact with the sharpening wheels throughout the sharpening process.

Then insert the knife into the right-hand hole for coarse sharpening and pull slowly towards you.

Repeat several times to achieve a good and even sharpening.



## WARNING!

Never insert the knife tip first into the holes. Damage to the knife, the knife sharpener and serious injury can occur.

**NOTE:**

Do not put too much pressure on the blade during sharpening, as it may dull the blade. If this happens, you need to start again.

8. **Fine sharpening:**

In the same way, insert the blade into the left hole for fine sharpening and then into the right hole and slowly pull towards you to fine sharpen the blade.

Repeat several times to keep the blade sharp.

9. **Polishing:**

Now insert the knife first into the left polishing hole and then into the right one. Slowly pull towards you until the blade is smooth and free of dirt.

10. Check the condition of the blade, e.g. by slicing food, cutting into paper, etc. The knife is properly sharp if you apply minimal pressure to the knife when using it.



## **WARNING!**

Never check the condition of the blade by running your finger over the blade. There is a risk of serious injury.

11. If you will no longer be using the knife sharpener, switch the knife sharpener off with the power switch (the light will go out) and disconnect it from the power supply.

## CARE AND CLEANING

Before cleaning the appliance, always disconnect the plug of the power cord from the mains socket and let it to cool down properly.



### WARNING!

DO NOT WASH THE APPLIANCE, MAINS CORD AND PLUG UNDER RUNNING WATER AND DO NOT IMMERSE IT IN WATER OR ANY OTHER LIQUID.



### CAUTION:

DO NOT USE SHARP OBJECTS, CHEMICALS, THINNERS, PETROL OR OTHER SIMILAR SUBSTANCES. UNDER NO CIRCUMSTANCES SHOULD THE APPLIANCE BE CLEANED WITH A STEAM CLEANER.

Wipe the outer surface with a soft cloth slightly dampened in warm water. Wipe with a dry cloth.

### METAL WASTE COMPARTMENT

The metal waste compartment must be cleaned regularly. Make sure the knife sharpener is disconnected from the mains socket. Open the compartment cover and use the magnet to remove the metal waste. Wipe the inside of the compartment with a soft, slightly dampened sponge. Wipe dry with a clean cloth. Return the cover.

### STORAGE

Before storing, make sure that the knife sharpener is clean, dry and completely cooled down. Store it in a well-ventilated dry place out of reach of children and animals.



## INSTRUCTIONS AND INFORMATION ON DISPOSING OF USED PACKAGING MATERIALS

Dispose of used packaging material at a site designated for waste in your municipality.

## DISPOSING OF USED ELECTRICAL AND ELECTRONIC EQUIPMENT



This symbol on products or original documents means that used electric or electronic products must not be added to ordinary municipal waste. For proper disposal and recycling, take these products to designated collection points. Or in some European Union states or other European countries the products can be returned to the local retailer when buying an equivalent new product. Disposing of this product correctly helps save valuable natural resources and prevents damage to the environment by improper waste disposal. Ask your local authorities or collection facility for more details. In accordance with national regulations penalties may be imposed for the incorrect disposal of this type of waste.

### **For business entities in European Union states**

If you want to dispose of electric or electronic devices, ask your retailer or supplier for the necessary information.

### **Disposal in other countries outside the European Union**

This symbol is valid in the European Union. If you wish to dispose of this product, request the necessary information about the correct disposal method from the local council or from your retailer.



This product meets all the basic requirements of the applicable EU directives.

The text, design and technical specifications may be changed without prior notice and we reserve the right to make these changes.

The original version is in the Czech language.

Manufacturer's address: FAST ČR, a.s., U Sanitasu 1621, Říčany CZ-251 01

## NOTES

# ELECTRIC KNIFE SHARPENER

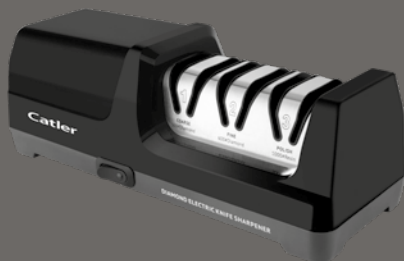
Because of continuous improvement of design and other properties, your product may slightly differ from the one shown on the pictures in this manual.

Z dôvodu neustáleho zdokonaľovania dizajnu a ďalších vlastností sa môže vámi zakúpený výrobok mierne líšiť od výrobku uvedeného na obrázkoch v tomto návode.

Z dôvodu neustáleho zdokonaľovania dizajnu a ďalších vlastností sa môže vámi kúpený výrobok mierne líšiť od výrobku uvedeného na obrázkoch v tomto návode.

A kivitel és más jellemzők állandó fejlesztése miatt a megvásárolt termék enyhén eltérhet az ezen útmutatóban található képeken mutatott terméktől.

Ze względu na ciągłe udoskonalanie designu i innych właściwości, zakupiony produkt może się nieznacznie różnić od produktu przedstawionego na rysunkach w niniejszej instrukcji.



**WWW.CATLER.EU**