

# Knowledge Base

## Installation of the GIGAPORT HD driver under Windows (up to v3.0)

original release: 2012-04-19 | ID: KB00013EN

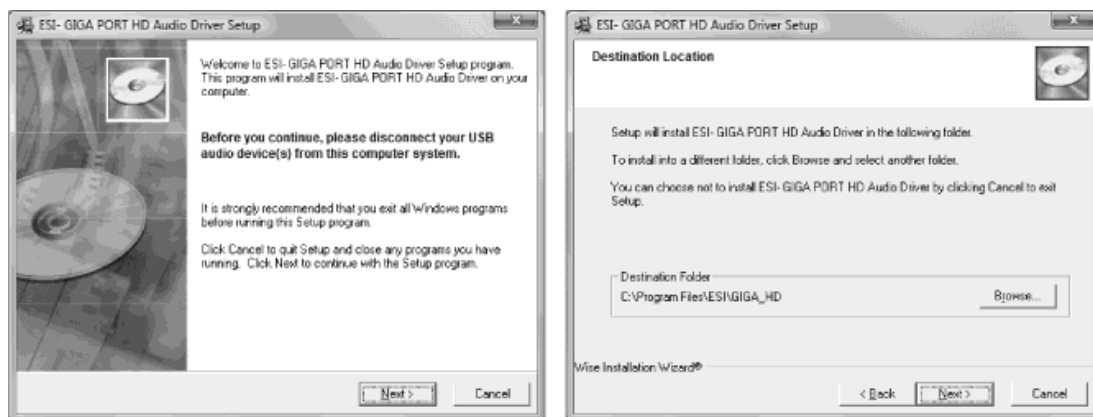


### Introduction

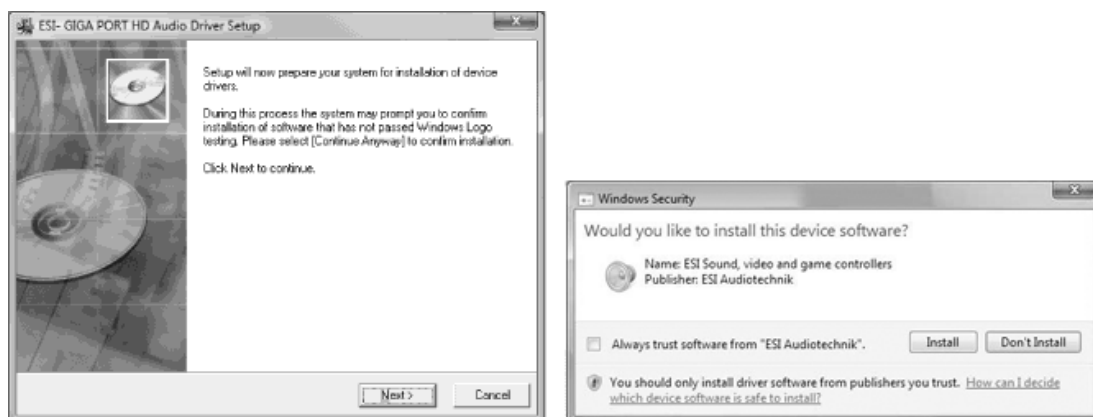
The GIGAPORT HD driver can be used under Windows XP, Vista and 7/8, both in 32-bit and 64-bit systems. Depending on the OS version, the installation procedure is slightly different. The following text first explains the installation under Windows Vista and Windows 7/8, followed by the installation under Windows XP, each in a different section. Please only check the corresponding section for your operating system. This description is valid for up to version 3.0 of the driver. For later versions, check this article.

### Installation under Windows Vista and Windows 7/8

Disconnect GIGAPORT HD before you install the driver if it has been connected already. Then launch *setup.exe* from the unzipped downloaded driver. When launching the installation, Windows Vista or Windows 7/8 might prompt a security message. Make sure to allow the installation. You will then see a dialog as shown on the left picture below. Click *Next*. You can define the target directory for the installation now. Confirm it with *Next*.



The installer now informs you that the driver installation will start as shown on the left picture below. Confirm this with *Next*. During the following process you will see a *Windows Security* dialog box once or several times that asks you for confirmation to install the driver software. Confirm any such dialog with *Install*.



You will now be prompted to connect the hardware on the next dialog that is shown below. Plug in GIGAPORT HD. Do not click *OK* yet. Instead, wait a few seconds for the automatic device driver installation. You can monitor this in the task notification area where Windows informs that the driver is installed via a bubble message box.



## Knowledge Base

### Installation of the GIGAPORT HD driver under Windows (up to v3.0)

original release: 2012-04-19 | ID: KB00013EN



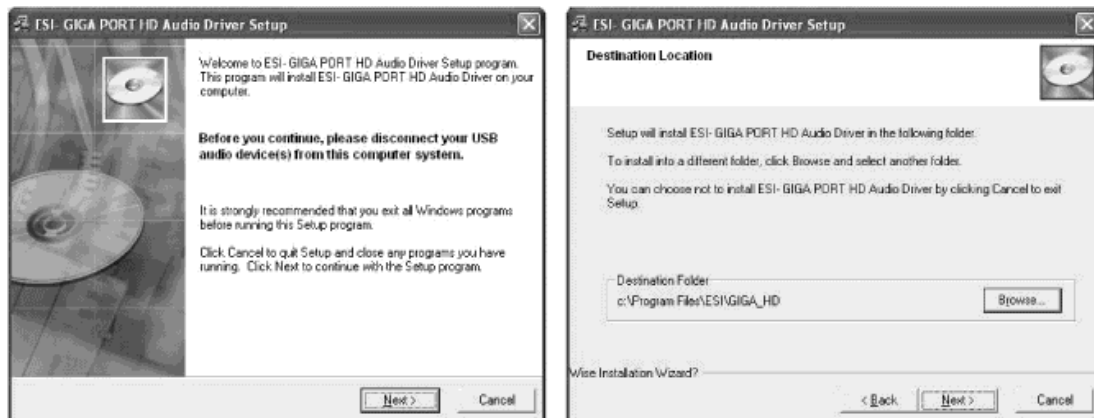
After all the mentioned steps are completed, the installation is finished. To confirm this, please check if the ESI icon is displayed in the taskbar notification area as shown below. Sometimes a reboot is required.



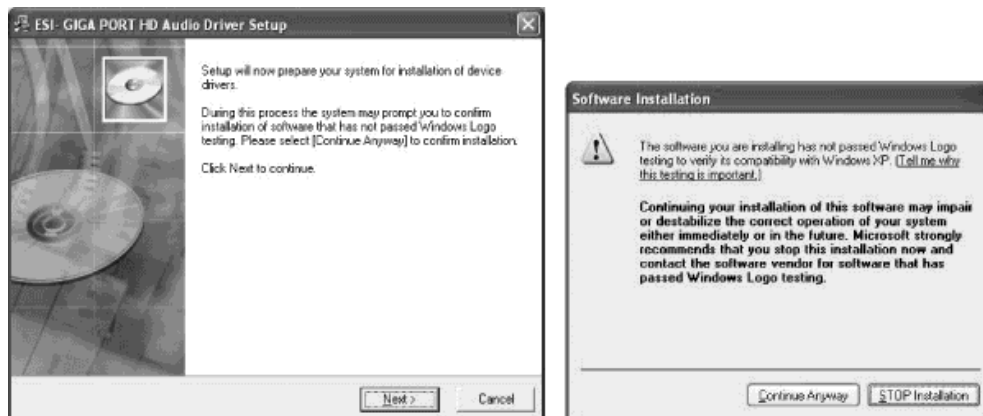
If yes, the driver installation has been completed successfully.

### Installation under Windows XP

Disconnect GIGAPORT HD before you install the driver if it has been connected already. Then launch *setup.exe* from the unzipped downloaded driver. You will now see a dialog as shown on the left picture below. Click *Next*. You can define the target directory for the installation now. Confirm it with *Next*.



The installer now informs you that the driver installation will start as shown on the left picture below. Confirm this with *Next*. During the following process you will see a dialog box once or several times that informs you that the driver software has not passed Windows Logo testing. Please be assured that our drivers have been tested in various different ways and are OK to be used. Confirm any such dialog with *Continue Anyway*.

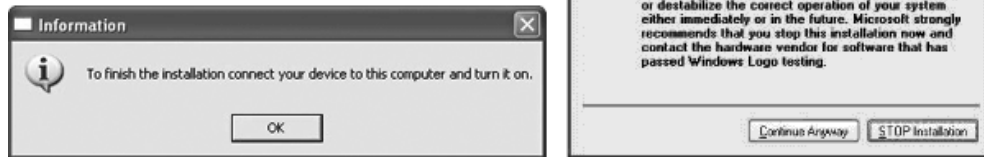


You will now be prompted to connect the hardware on the next dialog that is shown below on the left. Plug in GIGAPORT HD. Do not click OK yet. During the driver installation, Windows might again prompt you to confirm the Windows Logo testing dialog once or several times with *Continue Anyway* before the driver installation is finalized.

## Knowledge Base

### Installation of the GIGAPORT HD driver under Windows (up to v3.0)

original release: 2012-04-19 | ID: KB00013EN



After all the mentioned steps are completed, the installation is finished. To confirm this, please check if the ESI icon is displayed in the taskbar notification area as shown below. Sometimes a reboot is required.



If yes, the driver installation has been completed successfully.