

Ball Lock Function Description

Manipulate

- 1、 **Fingerprint setting at the lock end:** Press the setup key that inside the small hole next to the normally open button at the rear panel. After verifying the success of the administrator (any fingerprints in the initial state), enroll the fingerprints to be entered for five times, and then the voice announcement will be "Entered successfully".
- 2、 **Normally Open Mode:** Tap the normally open button on the rear panel (the bigger button next to the setup button) , the voice announces "Normally Open Mode", tap it again to close the normally open mode.
- 3、 **Switching language:** Long press the normally open button on the rear panel for 5s, the purple light of the fingerprint head is always on, wait for the fingerprint head to let go when the green light is on to switch the voice.Repeat the steps once again to switch another language.(App can switch the language more easily)

Voice List:

1. Chinese	5. Spanish
2. English	6. Thai
3. Portuguese	7. Vietnamese
4. Russian	

- 4、 **Fingerprint verification unlocking:** After successful fingerprint verification, voice announcement "unlocked", twist the front ball to unlock.
- 5、 **USB emergency power supply:** when the lock battery is run out of the power, there is an emergency port under the front panel of the lock, use the rechargeable treasure with Type C connecting cable to power up the front lock, press the fingerprint to unlock the lock.

- 6、**Restore Factory Settings:** Long press the setup key, let go when you see the red light on the fingerprint head, and then see the green light on, and the voice announces "Factory Settings have been restored".
- 7、**Trial and Error Alarm:** Validation error 3 times the drip sound reminder, validation error five times the system lock, lock after three minutes automatically lift.
- 8、**Low battery alarm:** low voltage alarm when the battery level is lower than 4.8V.

TUYA App Operating Instructions

APP Installation

Download and install the "TUYASmart" app from the app market.

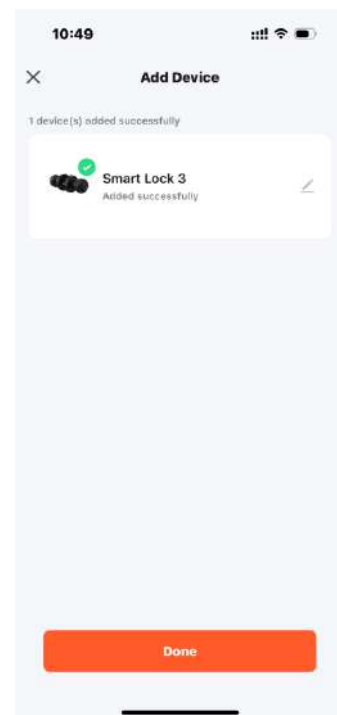
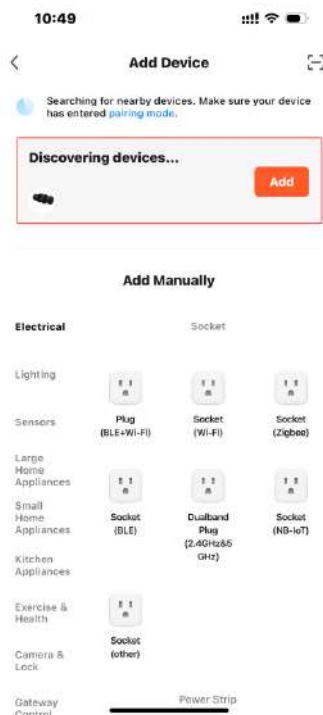
After installation follow the prompts to register and login.

Distribution Network Connection Lock

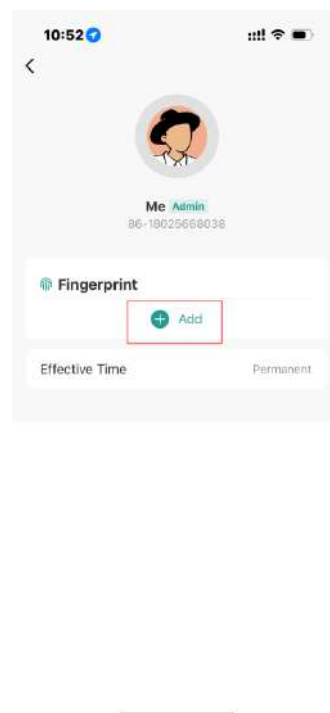
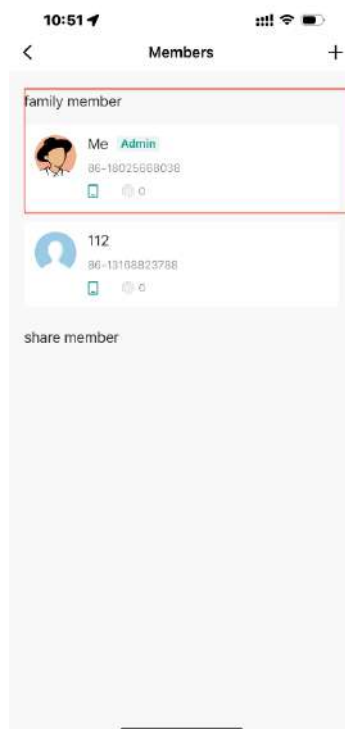
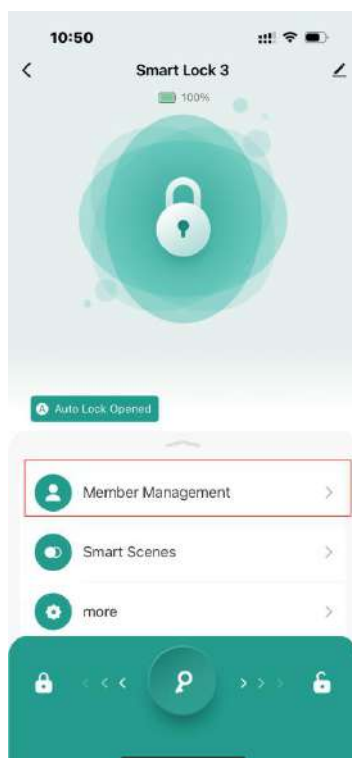
Starting the distribution process: If you have not setting any fingerprint, press any fingerprint to enter the distribution mode; if you have enrolled fingerprint, the machine will automatically enter the distribution mode;

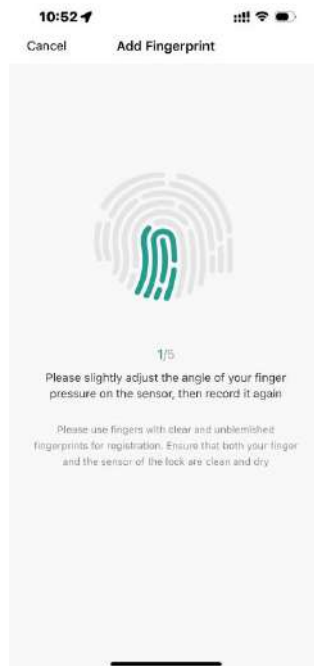
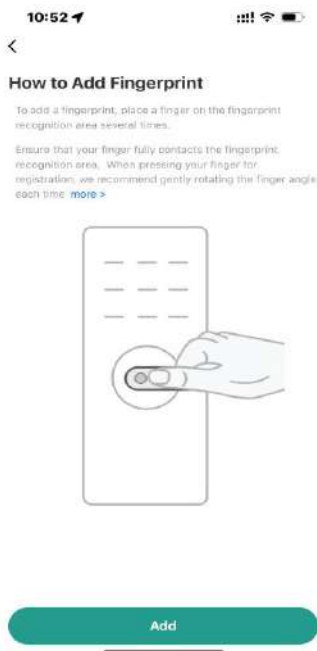
Open APP, you can add devices through manual and auto discovery window. After the device enters the distribution mode, APP will automatically pop up the discovery device window. If there is no such display for multiple operations. Please press the fingerprint once to wake up the fingerprint lock device and let the device turn on the Bluetooth broadcast. Please refer to "Tuya Operation FAQ" for details;

Add the device:



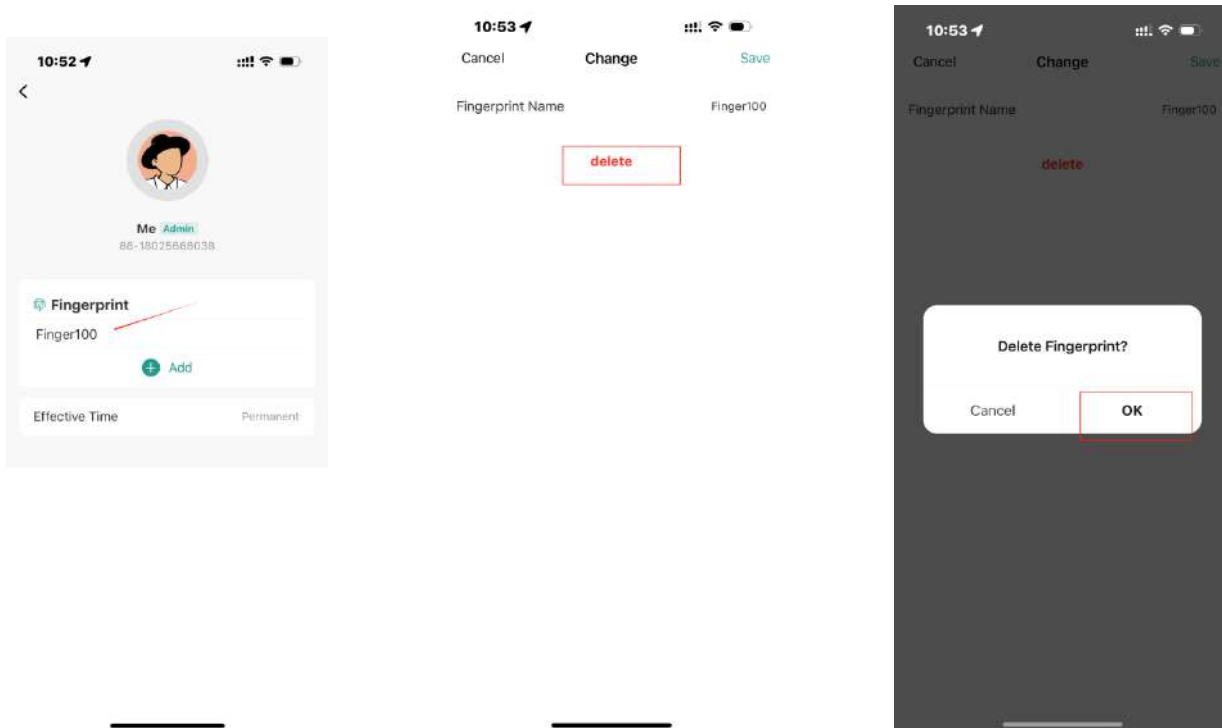
Add Fingerprint: Click on "Member Management", select the user, and follow the prompts to enter



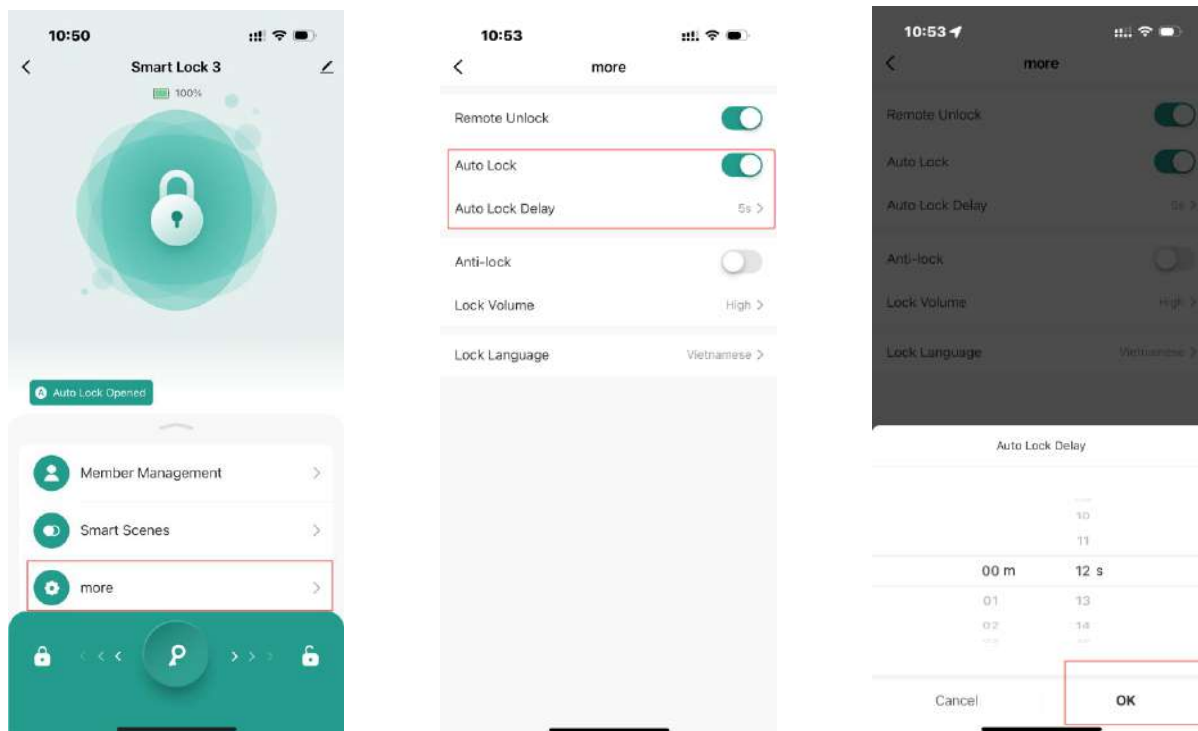


Delete fingerprints:

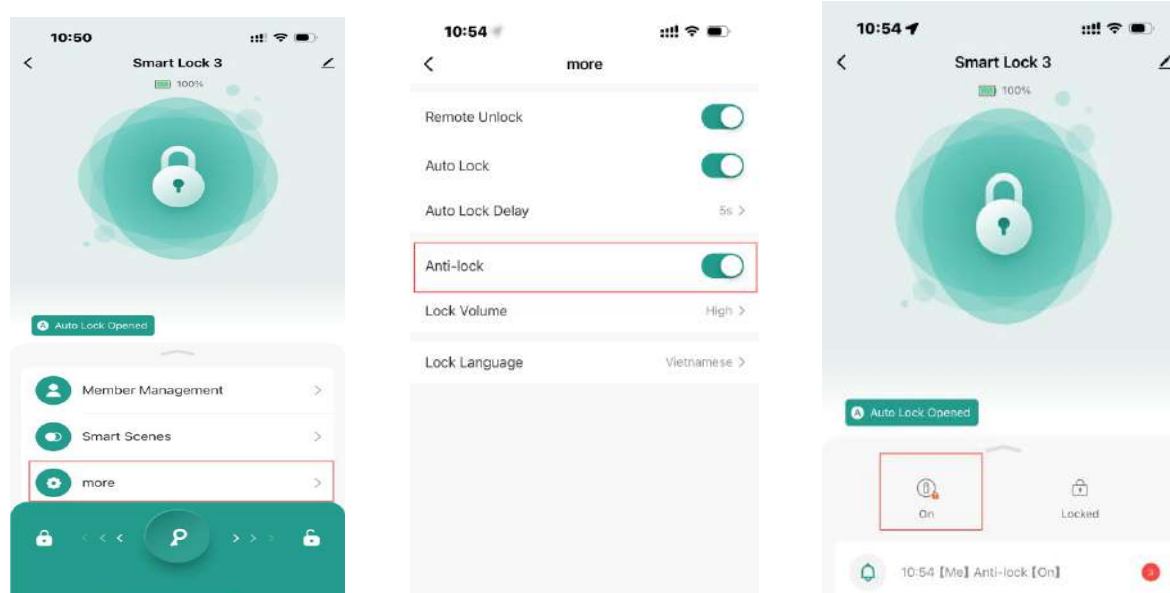
Click Member Management, select the user, select the fingerprints you want to delete, click Delete Fingerprints button, click Confirm, a pop-up window will indicate that the deletion is successful; click Cancel to return.



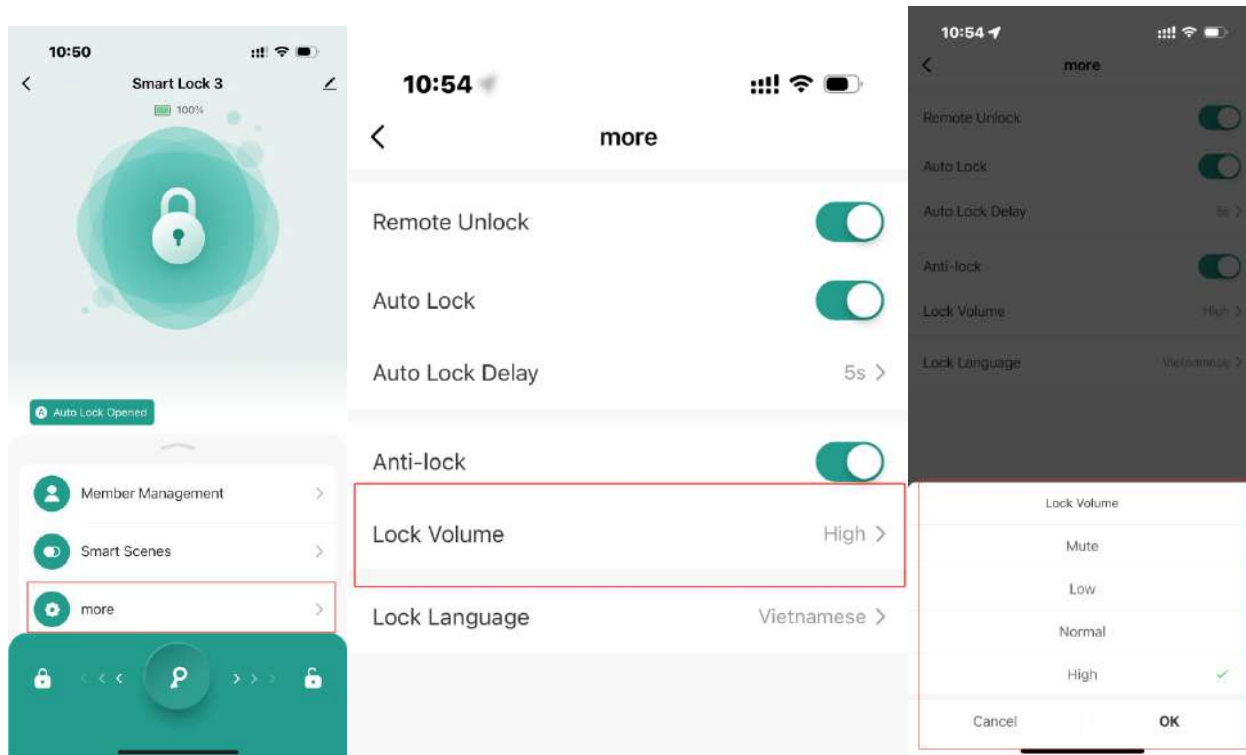
More settings-Automatic lock off: 5s-30 minutes can be set, any choice.



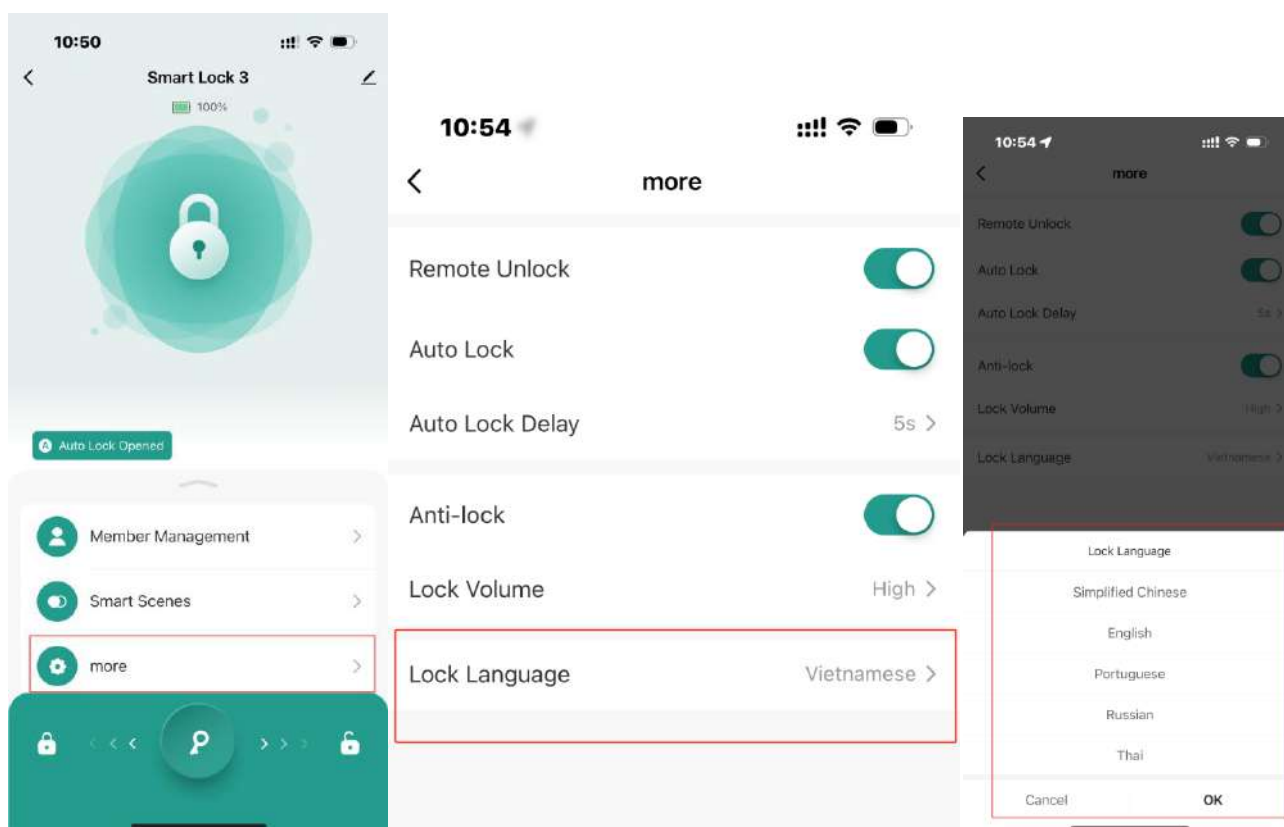
More Settings-Anti-Lock Setting: When you turn on Anti-Lock, only the first three registered administrator fingerprints can unlock the door, and when you turn off Anti-Lock, all fingerprints can unlock the door.



More settings - Door lock volume: treble, normal, bass, mute, click to confirm.

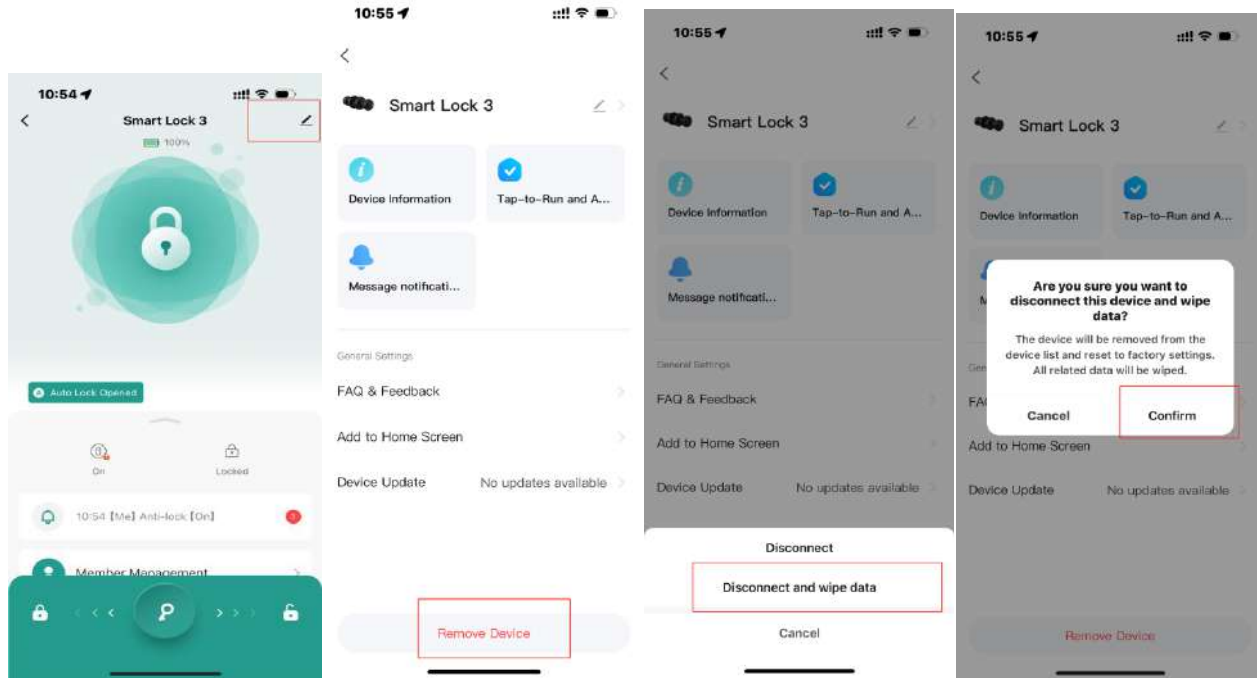


More Settings-Door Lock Language: Chinese, English, Portuguese, Russian, Thai, Spanish, Vietnamese can be set, click to confirm.



Restore Factory Settings & Disconnect

APP Unbinding



Click "disconnect and clear data" to unbind and clear data.

If the APP is not connected to the lock, it can also be operated remotely to unbind it. The device will be restored to factory settings when the device is searched with Tuya APP next time.

Tuya Operations FAQ:

Unlocking method: fingerprint unlocking, Tuya APP unlocking;

Fingerprint lock will not automatic turn on the Bluetooth mating mode when the device is not registered to record fingerprint. It needs to press the fingerprint before connecting, then the device will wake up and turn on the network mode for 1 minute.

All data in the device will be erased when the lock is restored to its factory settings.