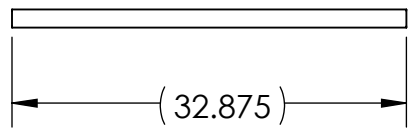
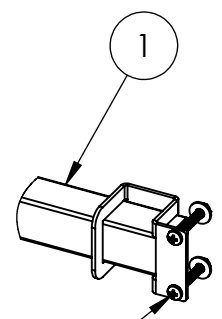
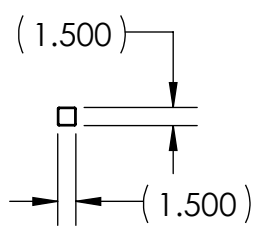


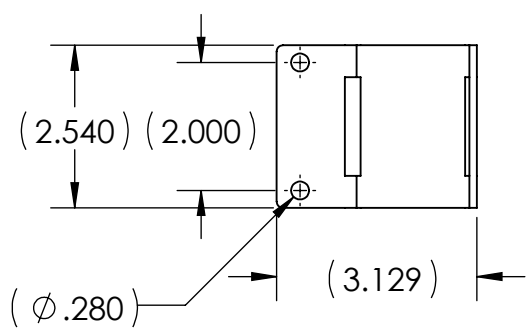
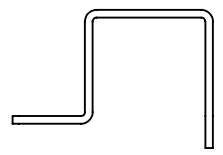
ITEM NO.	PART NUMBER	DESCRIPTION	QTY.
1	7000-3-536-00	36" PERFORMANCE PLUS ACCESSORY BAR KIT	1



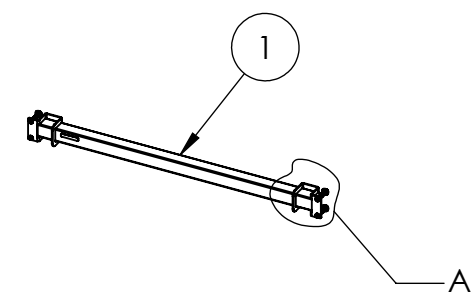
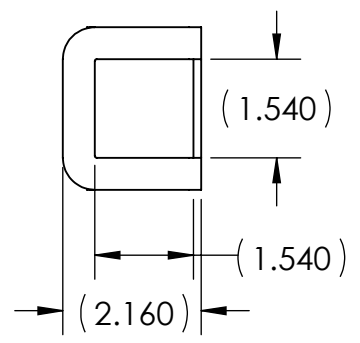
36 INCH ACCESSORY BAR- PERFORMANCE PLUS  
QUANTITY: 1



1/4-20 HARDWARE SUPPLIED WITH ①  
DETAIL A  
SCALE 1 : 6  
TYP BOTH ENDS

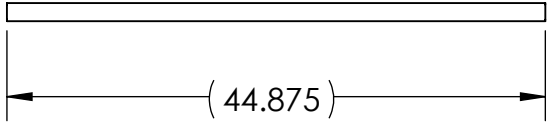


ACCESSORY BAR CLAMP-  
PERFORMANCE PLUS  
QUANTITY: 2

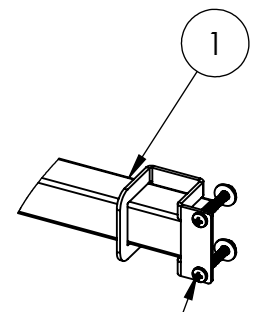
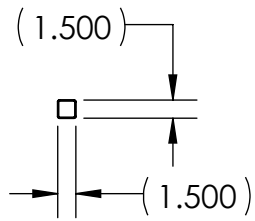


<b>KENDALL HOWARD CONFIDENTIAL</b> THE INFORMATION CONTAINED IN THIS DRAWING IS THE SOLE PROPERTY OF KENDALL HOWARD. ANY REPRODUCTION IN PART OR AS A WHOLE WITHOUT THE WRITTEN PERMISSION OF KENDALL HOWARD IS STRICTLY PROHIBITED.					<b>UNLESS OTHERWISE SPECIFIED, ALL DIMENSIONS ARE IN INCHES.</b>		<b>APPROVAL</b>		<b>DATE</b>		<b>KENDALL HOWARD</b>			
					TOLERANCES: FRACTIONAL: ±1/8 ANGULAR: ±1° TWO PLACE DECIMAL: ±.03 THREE PLACE DECIMAL: ±.010 HOLE: ±.005		DRAWN BS 09/28/2021 DESIGN BS 09/28/2021 ENG APPR MFG APPR		TITLE: <b>PRODUCT DATA- 36" PERFORMANCE PLUS ACCESSORY BAR KIT</b>					
					<b>MANUFACTURING COMMENTS:</b>		MATERIAL: NA SURFACE AREA (in²): NA FINISH ID: NA FINISH DESCRIPTION: NA		LEGACY Part Number: CLASSIFICATION: Technical Furniture				SIZE DWG. NO. REV <b>A</b> 7000-3-536-00 <b>A</b> Product Data	
					DO NOT SCALE DRAWING		THIRD ANGLE PROJECTION 		INTERPRET DIMENSIONS AND TOLERANCES PER ASME Y14.5-2009				SCALE: 1:24 WEIGHT (lbs): 4.08 SHEET 1 OF 1	
N/A Initial Release BS 09/28/2021 -														
ECO No: Description: By: Date: App By:														

ITEM NO.	PART NUMBER	DESCRIPTION	QTY.
1	7000-3-548-00	48" PERFORMANCE PLUS ACCESSORY BAR KIT	1

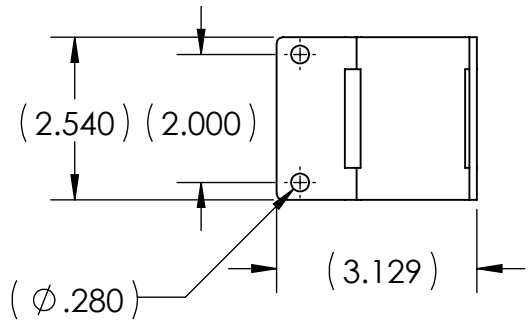
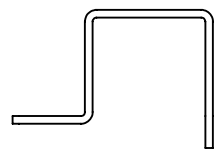


48 INCH ACCESSORY BAR- PERFORMANCE PLUS  
QUANTITY: 1

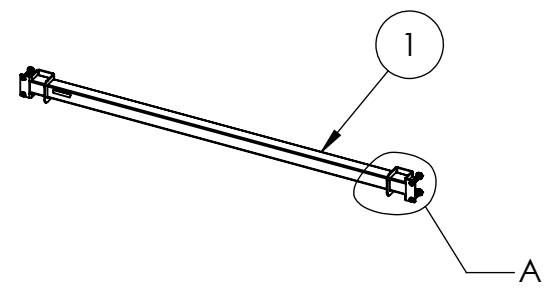
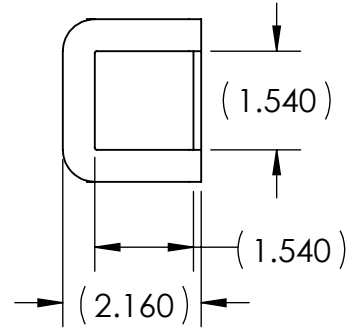


1/4-20 HARDWARE SUPPLIED WITH

DETAIL A  
SCALE 1 : 6  
TYP BOTH ENDS



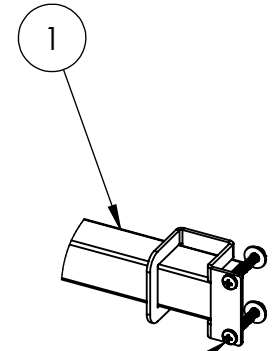
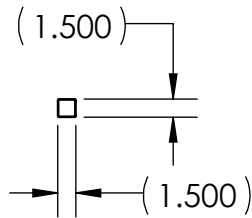
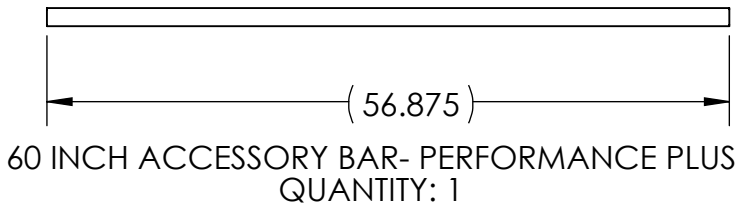
ACCESSORY BAR CLAMP-  
PERFORMANCE PLUS  
QUANTITY: 2



<p><b>KENDALL HOWARD CONFIDENTIAL</b> THE INFORMATION CONTAINED IN THIS DRAWING IS THE SOLE PROPERTY OF KENDALL HOWARD. ANY REPRODUCTION IN PART OR AS A WHOLE WITHOUT THE WRITTEN PERMISSION OF KENDALL HOWARD IS STRICTLY PROHIBITED.</p> <p><b>MANUFACTURING COMMENTS:</b></p>				<p>UNLESS OTHERWISE SPECIFIED, ALL DIMENSIONS ARE IN INCHES.</p>		<p><b>APPROVAL</b></p>		<p><b>DATE</b></p>		<p><b>KENDALL HOWARD</b></p> <p><b>TITLE:</b> <b>PRODUCT DATA- 48" PERFORMANCE PLUS ACCESSORY BAR KIT</b></p>	
				<p>TOLERANCES: FRACTIONAL: ±1/8 ANGULAR: ±1° TWO PLACE DECIMAL: ±.03 THREE PLACE DECIMAL: ±.010 HOLE: ±.005</p>		<p>DRAWN BS 09/28/2021</p>		<p>DESIGN BS 09/28/2021</p>			
				<p>MATERIAL: NA</p>		<p>ENG APPR</p>		<p>MFG APPR</p>			
				<p>SURFACE AREA (in²): NA</p>		<p>LEGACY Part Number:</p>		<p>CLASSIFICATION: Technical Furniture</p>			
<p>FINISH ID: NA</p>				<p>FINISH DESCRIPTION: NA</p>		<p>THIRD ANGLE PROJECTION</p>		<p>INTERPRET DIMENSIONS AND TOLERANCES PER ASME Y14.5-2009</p>		<p>SIZE DWG. NO. REV</p>	
<p>DO NOT SCALE DRAWING</p>								<p><b>A</b> 7000-3-548-00 Product Data <b>A</b></p>		<p>SCALE: 1:24 WEIGHT (lbs): 5.52 SHEET 1 OF 1</p>	

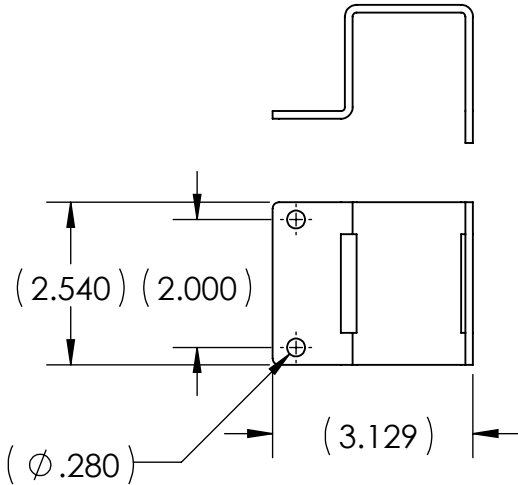
NA	INITIAL RELEASE.	BS	09/28/2021	BS
ECO No:	Description:	By:	Date:	App By:

ITEM NO.	PART NUMBER	DESCRIPTION	QTY.
1	7000-3-560-00	60" PERFORMANCE PLUS ACCESSORY BAR KIT	1

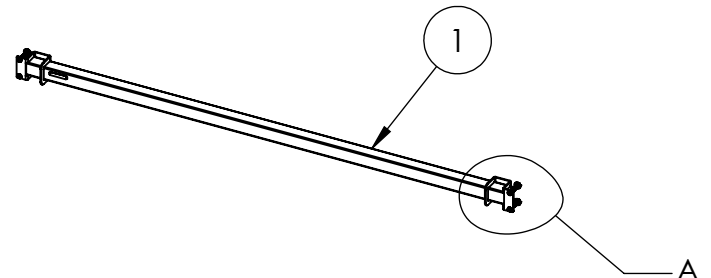
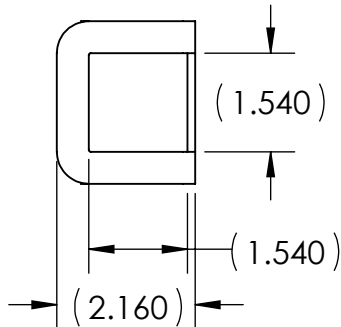


1/4-20 HARDWARE SUPPLIED WITH ①

DETAIL A  
SCALE 1 : 6  
TYP BOTH ENDS

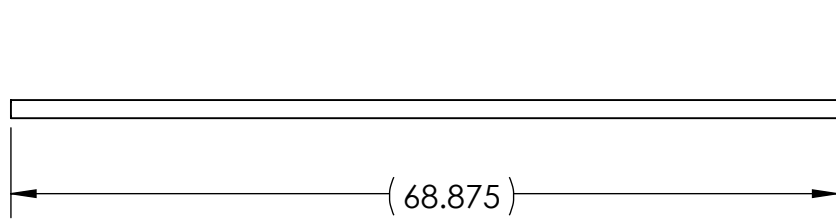


ACCESSORY BAR CLAMP-  
PERFORMANCE PLUS  
QUANTITY: 2

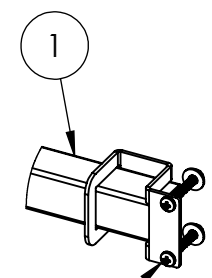
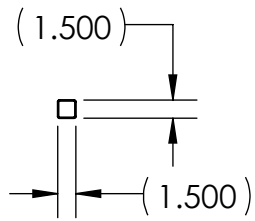


<div>KENDALL HOWARD CONFIDENTIAL</div> <div>THE INFORMATION CONTAINED IN THIS DRAWING IS THE SOLE PROPERTY OF KENDALL HOWARD. ANY REPRODUCTION IN PART OR AS A WHOLE WITHOUT THE WRITTEN PERMISSION OF KENDALL HOWARD IS STRICTLY PROHIBITED.</div> <div>MANUFACTURING COMMENTS:</div>					UNLESS OTHERWISE SPECIFIED, ALL DIMENSIONS ARE IN INCHES.		APPROVAL		DATE		<div>KENDALL HOWARD</div> <div>TITLE:</div> <div>PRODUCT DATA- 60" PERFORMANCE PLUS ACCESSORY BAR KIT</div>										
					TOLERANCES: FRACTIONAL: ±1/8 ANGULAR: ±1° TWO PLACE DECIMAL: ±.03 THREE PLACE DECIMAL: ±.010 HOLE: ±.005		DRAWN    BS		09/27/2021												
					MATERIAL: NA SURFACE AREA (in²): NA FINISH ID: NA FINISH DESCRIPTION: NA  DO NOT SCALE DRAWING		DESIGN    BS		09/28/2021		LEGACY Part Number:		CLASSIFICATION: Technical Furniture								
							ENG APPR														
									MFG APPR												
N/A					Initial Release					BS		09/28/2021		-		SIZE		DWG. NO. <div>A</div> 7000-3-560-00 Product Data		REV <div>A</div>	
ECO No:					Description:					By:		Date:		App By:							
																SCALE: 1:24		WEIGHT (lbs): 6.39		SHEET 1 OF 1	

ITEM NO.	PART NUMBER	DESCRIPTION	QTY.
1	7000-3-572-00	72" PERFORMANCE PLUS ACCESSORY BAR KIT	1

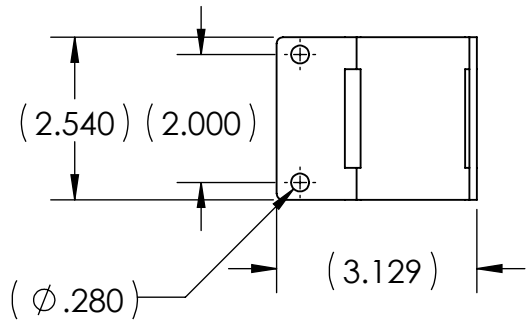
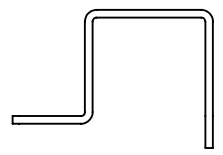


72 INCH ACCESSORY BAR- PERFORMANCE PLUS  
QUANTITY: 1

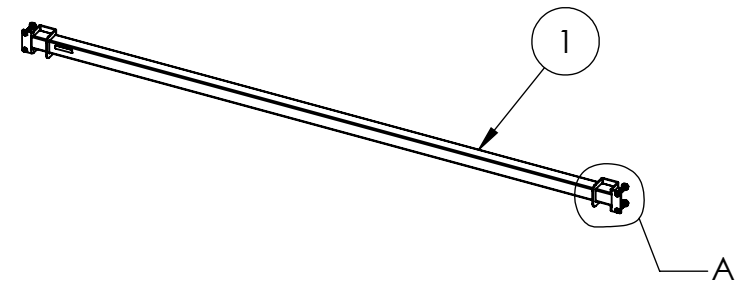
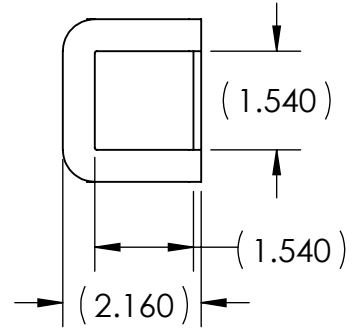


1/4-20 HARDWARE SUPPLIED WITH ①

DETAIL A  
SCALE 1 : 6  
TYP BOTH ENDS



ACCESSORY BAR CLAMP-  
PERFORMANCE PLUS  
QUANTITY: 2



<b>KENDALL HOWARD CONFIDENTIAL</b> THE INFORMATION CONTAINED IN THIS DRAWING IS THE SOLE PROPERTY OF KENDALL HOWARD. ANY REPRODUCTION IN PART OR AS A WHOLE WITHOUT THE WRITTEN PERMISSION OF KENDALL HOWARD IS STRICTLY PROHIBITED.					<b>UNLESS OTHERWISE SPECIFIED, ALL DIMENSIONS ARE IN INCHES.</b>		<b>APPROVAL</b>		<b>DATE</b>		<b>KENDALL HOWARD</b>	
					TOLERANCES: FRACTIONAL: ±1/8 ANGULAR: ±1° TWO PLACE DECIMAL: ±.03 THREE PLACE DECIMAL: ±.010 HOLE: ±.005		DRAWN BS 09/27/2021		DESIGN BS 09/28/2021			
					MATERIAL: NA		ENG APPR		MFG APPR			
					SURFACE AREA (in²): NA		LEGACY Part Number:		CLASSIFICATION: Technical Furniture			
<b>MANUFACTURING COMMENTS:</b>					FINISH ID: NA		FINISH DESCRIPTION: NA		THIRD ANGLE PROJECTION		INTERPRET DIMENSIONS AND TOLERANCES PER ASME Y14.5-2009	
DO NOT SCALE DRAWING												

N/A		Initial Release		BS		09/28/2021		-	
ECO No:		Description:		By:		Date:		App By:	

<b>TITLE:</b> PRODUCT DATA- 72" PERFORMANCE PLUS ACCESSORY BAR KIT		<b>SIZE</b> A		<b>DWG. NO.</b> 7000-3-572-00		<b>REV</b> A	
SCALE: 1:24		WEIGHT (lbs): 7.98		SHEET 1 OF 1			