

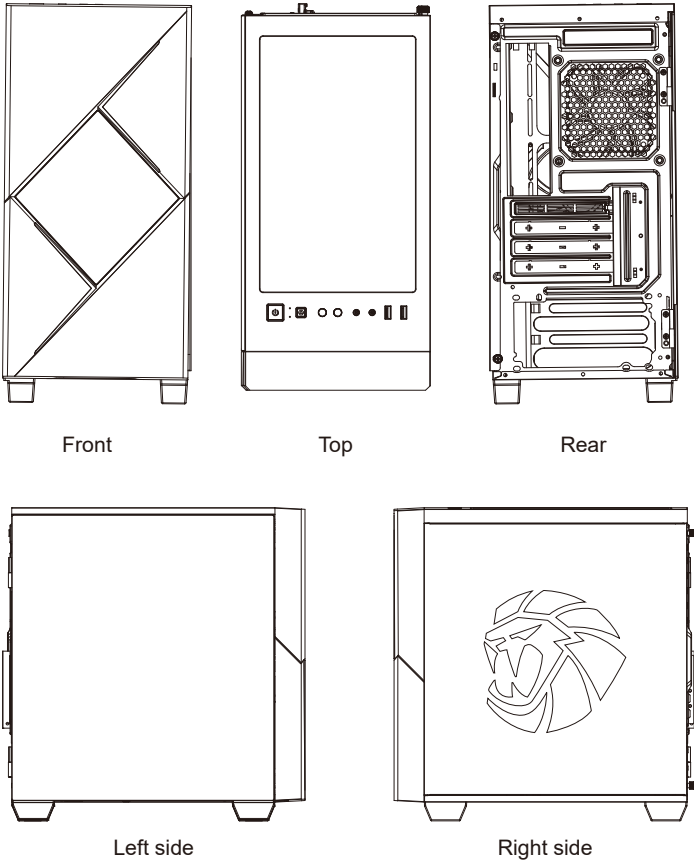
Cyclops

USER MANUAL

CopyRight@ 2021.6

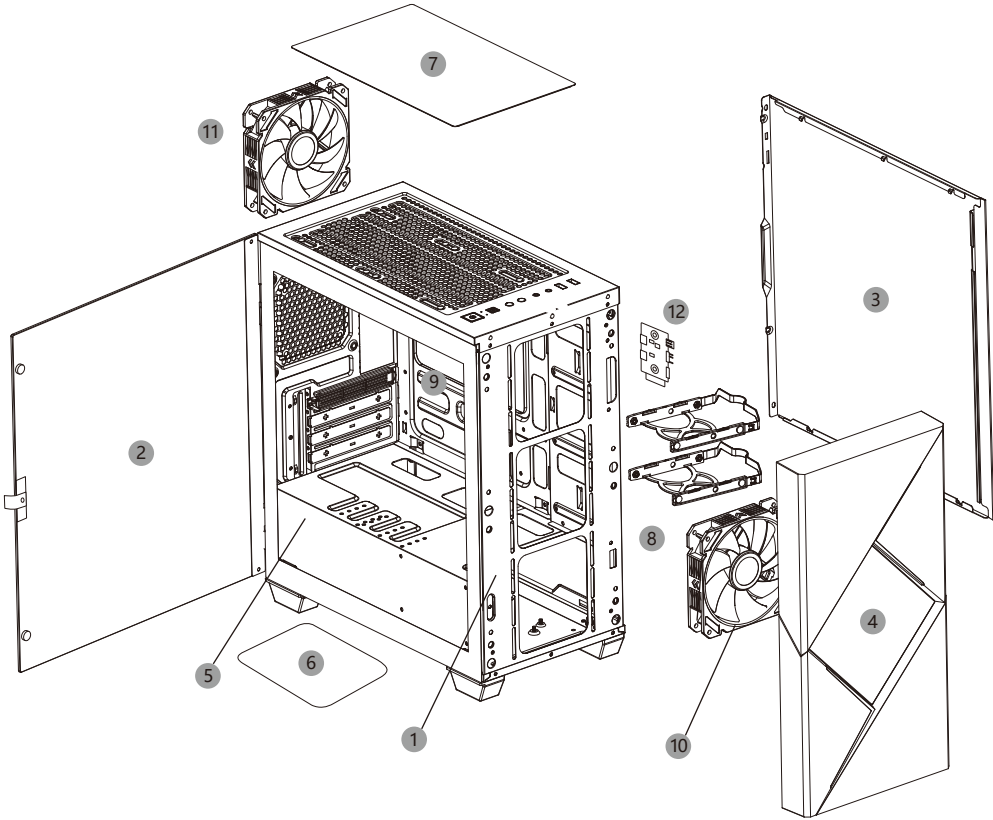
SPECIFICATION

Model No.	Cyclops(MFG.H610)
Materials	Chassis 0.6mm SPCC, tempered glass on left side panel
Motherboard support	M-ATX、ITX
PSU type	ATX PSU (Bottom located)
TOP panel I/O ports	USB3.0*1+USB2.0*1, HD Audio, Light Controller
HDD bay	3.5" HDD*2 , 2.5" SSD*2
Expansion slots	4 slots , Support up to 340mm (Max.) VGA card
CPU cooler height	155mm
Fan cooling	Front: 3*120mm (Included 1*120mm ARGB fan)
	Top: 2*120mm (optional)
	Rear: 1*120mm (Included 1*120mm ARGB fan)
Liquid cooling	Front: 120/240 water cooling Radiator
	Rear: 1*120mm water cooling Radiator
Chassis size	(L)350 x (W)193 x (H)390mm
Case size	(L)403 x (W)193 x (H)415mm

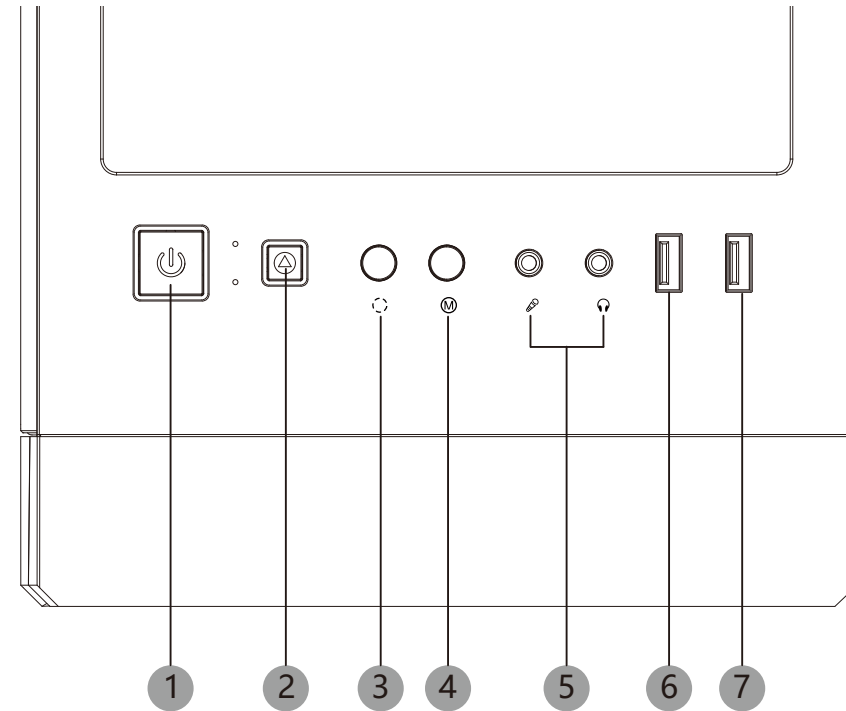


EXPLOSIVE VIEW

- 1 Chassis
- 2 Left tempered glass side panel
- 3 Right side panel
- 4 Front panel
- 5 PSU cover
- 6 Dust-proof filter on the bottom
- 7 Dust-proof filter on the top
- 8 HDD Bracket
- 9 M/B installation position
- 10 1*120mm fan on the front
- 11 1*120mm fan on the rear

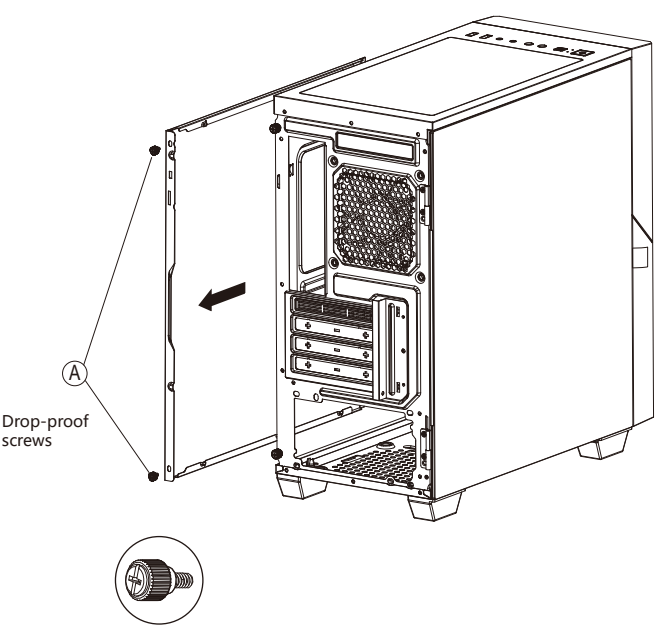


I/O PORTS

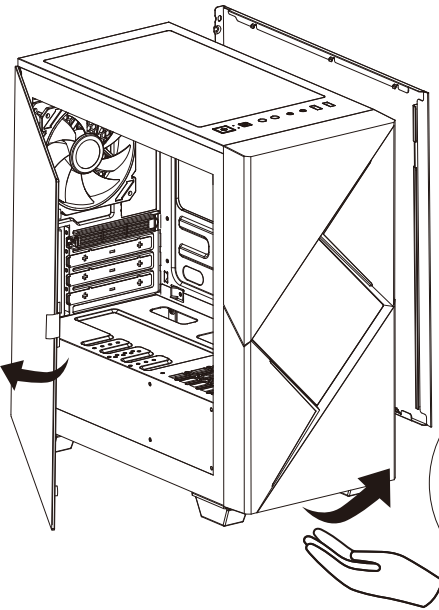


- 1 Power Switch
- 2 Reset
- 3 Light brightness
- 4 Lihgt mode
- 5 HD Audio
- 6 USB 2.0
- 7 USB 3.1 GEN1

SIDE PANEL INSTALLATION



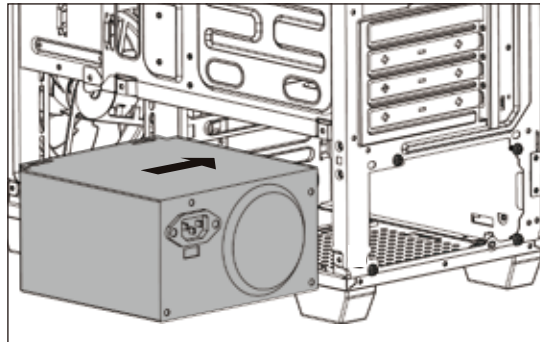
Loose the drop-proof screws A, pull out the right side panel toward to the arrowhead direction.



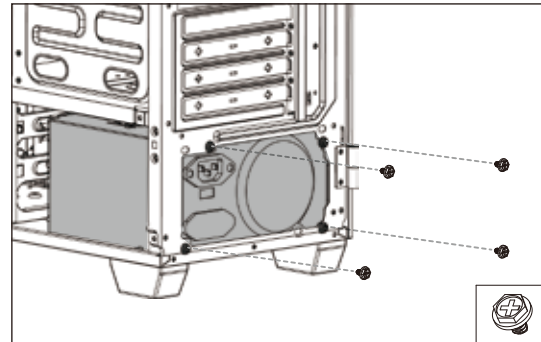
Easy open side door

Firmly stabilize the chassis with one hand, apply a gradual pulling force with another hand from the bottom to take out the front panel.

POWER SUPPLY INSTALLATION

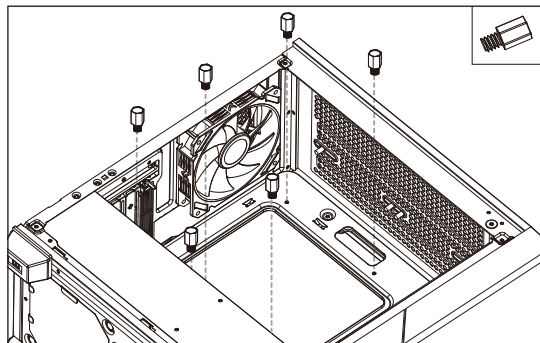


Remove the right side panel, then put into the PSU according to the arrowhead direction.

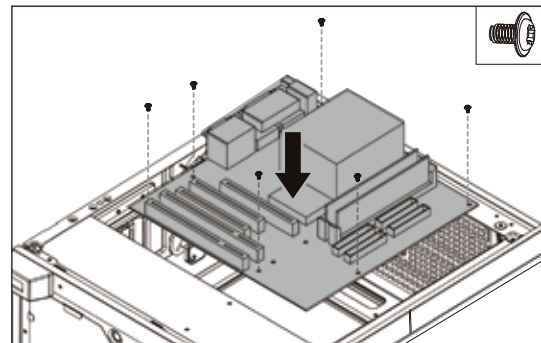


Fix the screws

MOTHERBOARD INSTALLATION

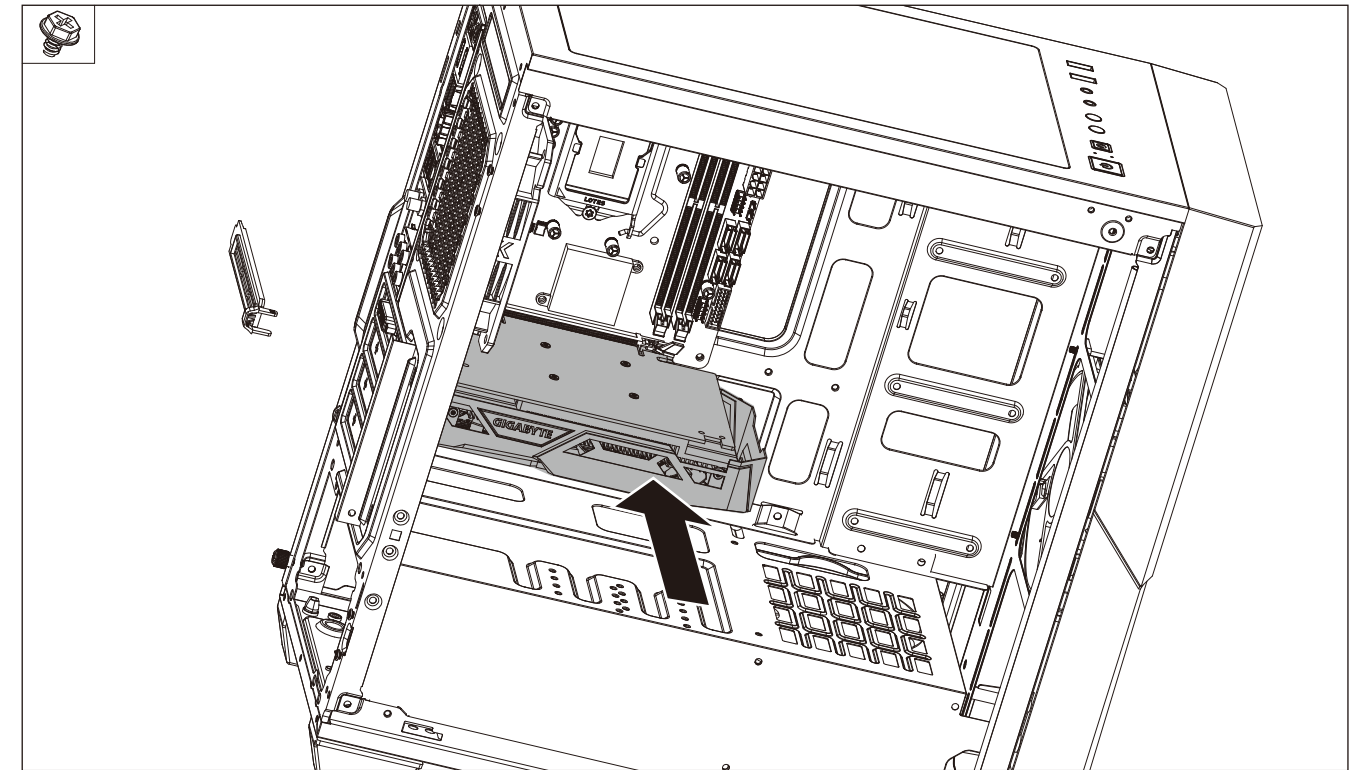


Pre-installed the motherboard screws



Put the motherboard into the right position according to the arrowhead direction, then fix the screws

VGA CARD INSTALLATION

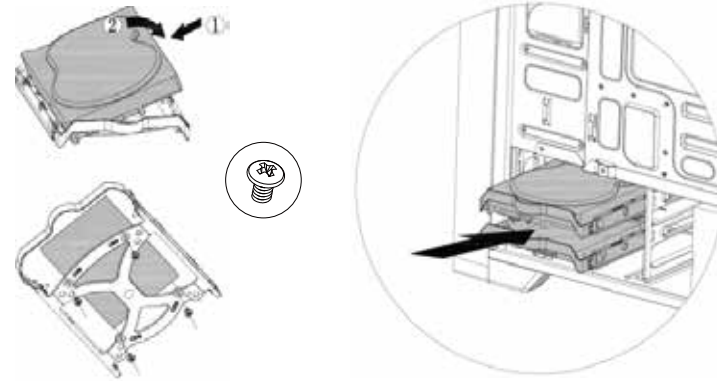


Remove the PCI slot protection cover. Install the graphics card and secure it with a screw.

HDD AND SSD INSTALLATION

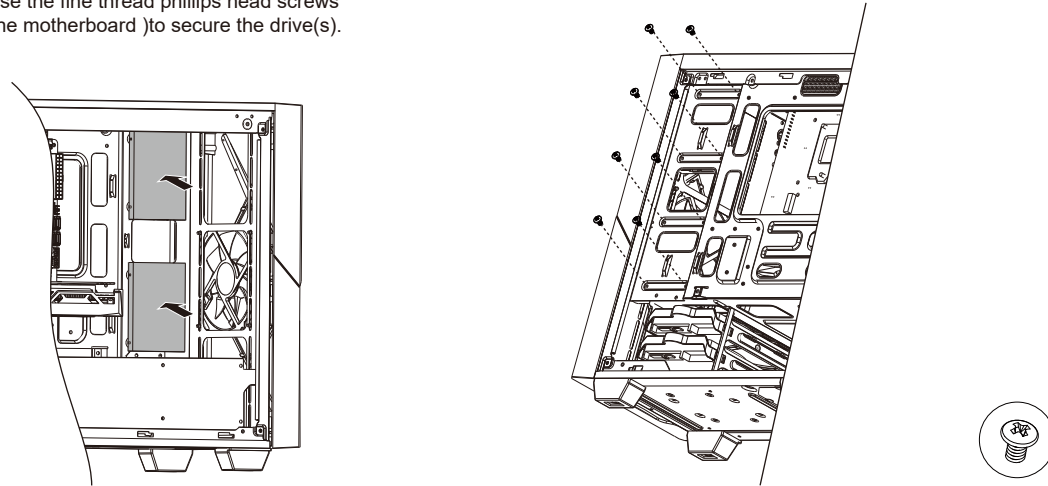
Installing 2x 3.5" toolless or 2x 2.5" storage drive

- a. when installing 3.5" drive ,without screws;
- b. when installing 2x2.5" drive use the fine thread phillips head screws (same screws used to secure the motherboard)to secure the drive.



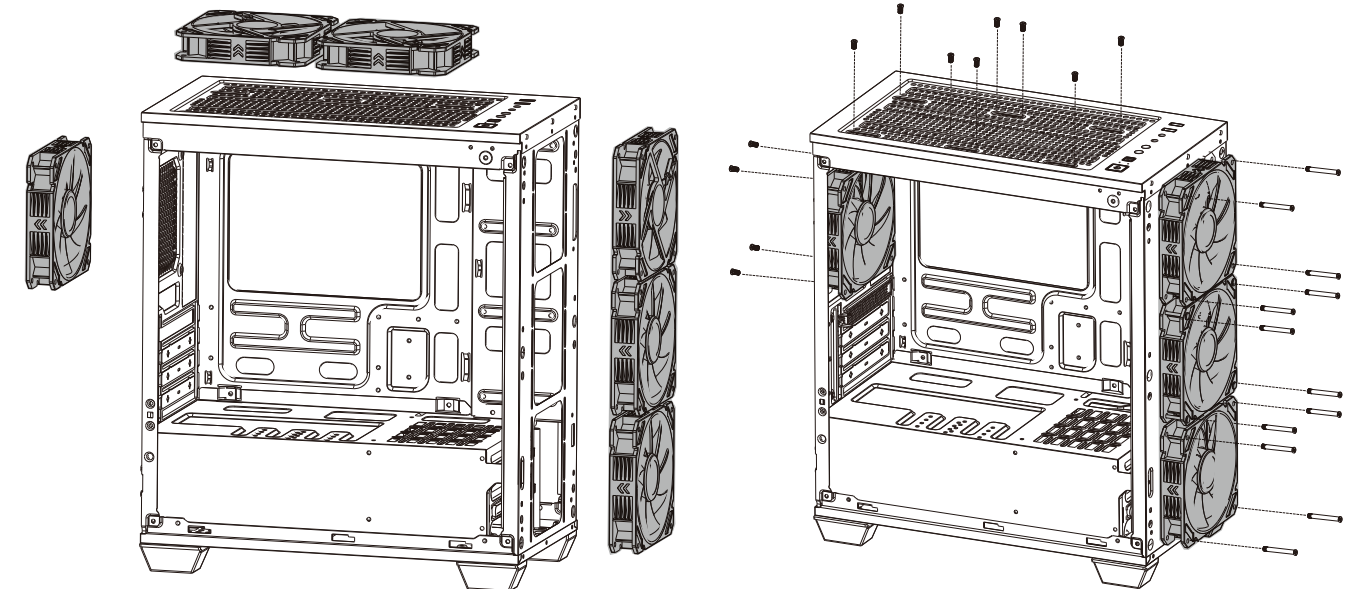
Optional mounting position for 2x2.5" drives

when installing 2x2.5" drive(s) use the fine thread phillips head screws (same screws used to secure the motherboard)to secure the drive(s).



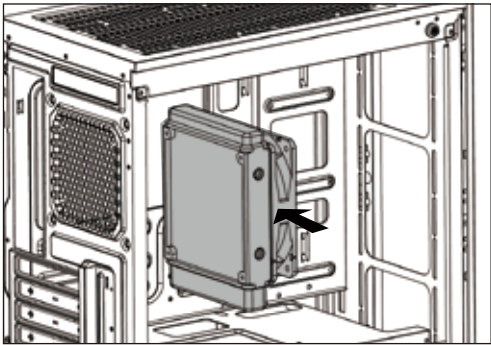
FAN AND WATER COOLING INSTALLATION

Install fan cooling

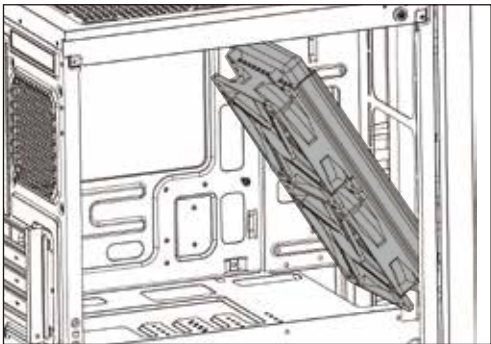


FAN AND WATER COOLING INSTALLATION

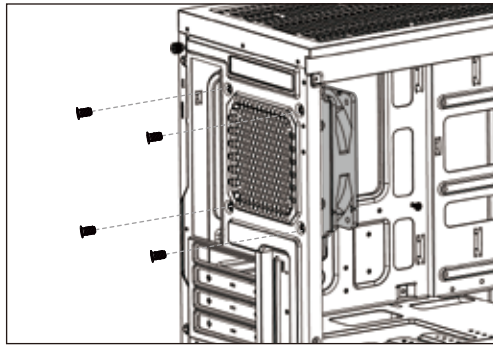
Install water cooling



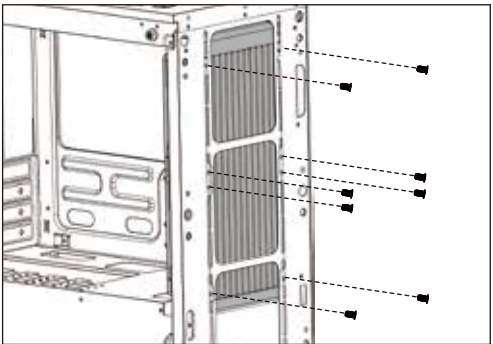
Put the 120mm radiator in the rear panel



Put the radiator in the front panel



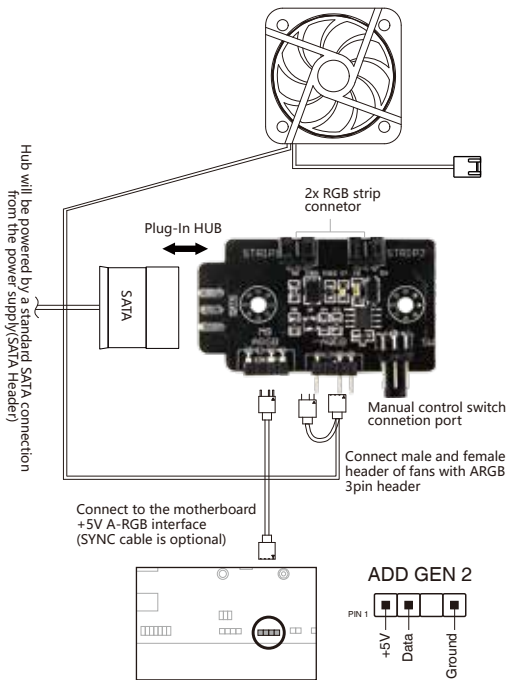
Fix with screws



Fix with screws

V1.7 A-RGB(RAINBOW) CONTROL HUB

Schematic diagram of connection



1. Product features

- 1-1. 18 color models.
- 1-2. Mode and color adjustment.
- 1-3. Brightness adjustment(can be Selection)
- 1-4. SATA power supply.
- 1-5. Compatible with programmable RGB interface of RAINBOW motherboard.
- 1-6. Can connect LED strip of ASUS.

2. Functional description

- 2-1. Change MB and controller mode.
The default mode is controller mode. Press the MODE key for 3s, and the white light flickers. It prompts you to switch into MB mode, release the key and enter the MB mode. After entering the MB mode, press the MODE key and enter the controller mode again.
- 2-2. Switch mode
In the controller mode, press the MODE key 3S, and the white light flickers. If you continue to press the key, the light will be turned off. Press the MODE key again to turn on the light.
- 2-3. Memory function.
This controller has memory function.
- 2-4. Mode and color button.
Short press one time mode and color button to change mode.
Short press two times mode and color button to change colors in the same mode.
- 2-5. Brightness button
Short press brightness button can adjust the brightness of LED. This function depends on different versions to decide whether to provide.
- 2-6. AURA SYNC
After connecting the interface, the light control of the MB can be realized by key-press operation.
- 2-7. Strip
It can be connected LED strip with ASUS standard.

3. Interface definitions

- 3-1. ARGB
ARGB connect fan or light bar. The triangle mark on the plug is aligned with the arrow on the controller.
- 3-2. MB ARGB
MB ARGB is connected to the motherboard ARGB interface. The triangle mark on the plug is aligned with the arrow on the controller.
- 3-3. SATA
SATA is the power supply interface and Output 5V DC voltage.
- 3-4. SW
SW is the switch interface. Some products have mode and color control functions, and some products have brightness adjustment function.
- 3-5. STRIP
Can connect lights strip of ASUS for 3PIN.

Switch mode

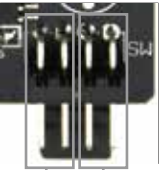
In the controller mode, press the MODE key 3S, and the white light flickers. If you continue to press the key, the light will be turned off. Press the MODE key again to turn on the light.

Mode and color button

Short press one times mode and color button to change mode. Short press two times mode and color buttons to change colors in the same mode.

Brightness button

Short press brightness button can adjust the brightness of LED. This function depends on different versions to decide whether to provide.



Mode and color button
Brightness button