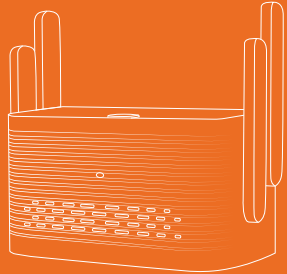
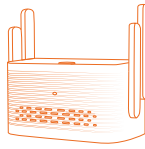


Tuya Gateway

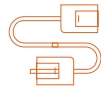
User manuals



Product List



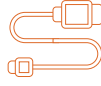
Gateway x 1



Network cable x 1



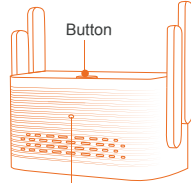
Power Adapter



USB Power cable x 1

Introduce

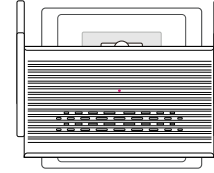
The tuya gateway is developed based on DSGW-075, it can be connected to tuya's ZigBee device. You can control the devices via the gateway with tuya App or smart life App.



Indicator LEDs

How to install

1. Place the gateway in a location where it can be connected to router as well as to a power source.
2. Plug the gateway on the wall outlets (device startup takes about a minute till the LED light flashing magenta color).



3. Reset the device

Press and hold the reset button on the gateway for more than 10 seconds, Then the device restoresto factory Settings.

4. Indicator Light Description

Blue light flashing	Normal network connection not tied
Blue light always on	Successful connection to the Tuya IoT platform
Magenta light flashing	Internet disconnect (WAN and Wi-Fi not connected)
Red light	Tuya program startup failure

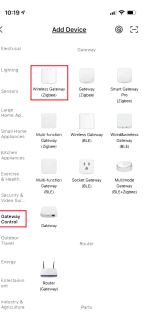
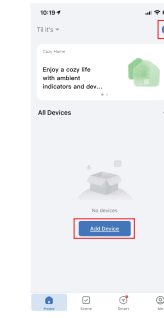
How to set up tuya app

- 1.Use your phone to scan QR code or search"Smart Life" app in Google play store or APP Storeto download and install it.



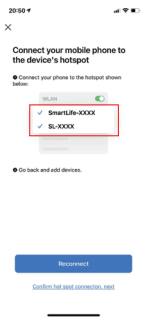
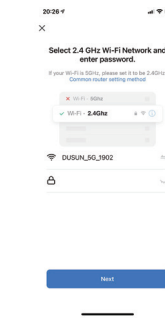
Note: The device is powered up, the gateway is connected to the router and the phone and the device are on the same network.

- 2.Select Add Device and find the Wireless Zigbee gateway in the device list for the Gateway Central Control.

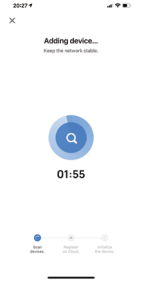
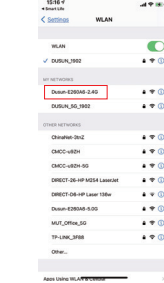


- 3.Connect to your router's Wi-Fi ,select your Wi-Fi SSID and enter the password, and click Next.

Note: Android users will need to select AP Mode for the next step.



- 4.Connect your mobile phone to the device's hotspots, add the device to tuya app, the hotspot name is dusun_XXXXX, XXXXXX is the last 8 digits of mac address.After completing the gateway addition, choose to add your device (device adding takes about a minute till the LED blue light always on).

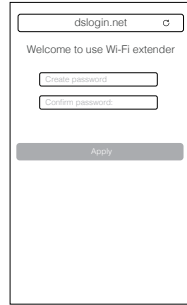


Repeater

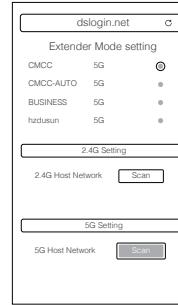
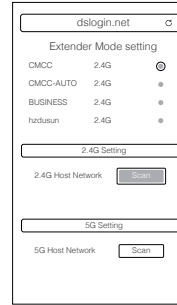
1. The mobile phone searches for the wireless Wi-Fi issued by the extender: Dusun-2G/5G-XXXX, XXXX is the last 4 digits of the Mac address, use your mobile phone to connect to this Wi-Fi.



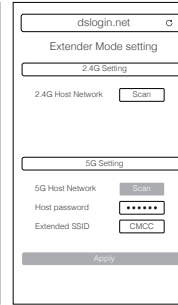
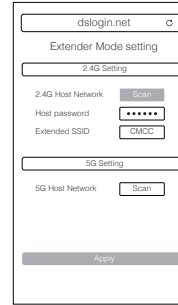
2. After connecting to Wi-Fi, open your mobile browser, output dslogin.net to enter the management page, output the default password 12345678 and click Login.



3. Factory AP mode by default, in expander mode for scanning the surrounding 2.4G or 5G networks.



4. Select the network to be extended, enter the password and set the extended wireless name, click Apply.



Work Mode

The extender supports 2 modes, AP mode and extender mode.

AP Mode

When DSGW-071 works in AP Mode,it turns Ethernet port your own personal Wi-Fi hotspot to create a new network.

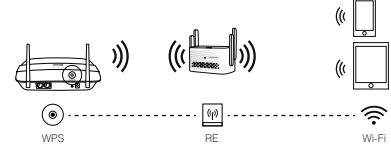


Extender Mode

It connect to router,and extender the Wi-Fi.



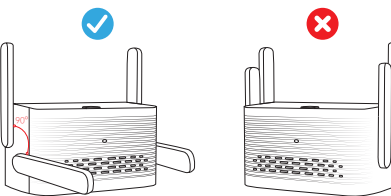
WPS Buttons



Press the WPS button of the superior AP, then press the WPS button of this device. The LEDs of this device start flashing red and blue together. When the red and blue lights start flashing fast, it means that the Wi-Fi in the 2.4G band is being connected and the configuration is completed when the flashing is done (the device is in extender mode once the WPS configuration is completed).

Use the antenna correctly

When plugged in, do not stand up all four antennas. Please keep the antennas on both sides at a 90-degree angle to use.



Basic Parameters

Project	Specification Description
Model	DSGW-075
Power supply	Input:100V~240V AC/50~60HZ
Plug Type	EU,UK,US,AU
Interface	1x10x100M Ethernet Port(RJ45)
Indicator LEDs	Two-color LED
Button	WPS and Reset function
Power Consumption	3W
Dimension	86mm(W)x57mm(D)x45mm(H)
Weight	About 126g

FCC Statement

1. This device complies with Part 15 of the FCC Rules. Operation is subject to thefollowing two conditions:
(1) this device may not cause harmful interference
(2) this device must accept any interference received, including interference that maycause undesired operation.
2. Changes or modifications not expressly approved by the party responsible forcompliance could void the user's authority to operate the equipment.

Note:

This equipment has been tested and found to comply with the limits for a Class B digital device,pursuant to part 15 of the FCC Rules. These limits are designed to provide reasonable protection against harmful interference in a residential installation. This equipment generates,uses and can radiate radio frequency energy and, if not installed and used in accordance with the instructions, may cause

harmful interference to radio communications. However, there is no guarantee that interference will not occur in a particular installation. If this equipment does cause harmful interference to radio or television reception, which can be determined byturning the equipment off and on, the user is encouraged to try to correct the interference by one or more of the following measures:

- Reorient or relocate the receiving antenna.
- Increase the separation between the equipment and receiver.
- Connect the equipment into an outlet on a circuit different from that to which the receiver is connected.
- Consult the dealer or an experienced radio/TV technician for help.

To comply with FCC RF exposure requirements,a mininum searationdistance of 20 cm must be maintained between the user's body and the transmitter.