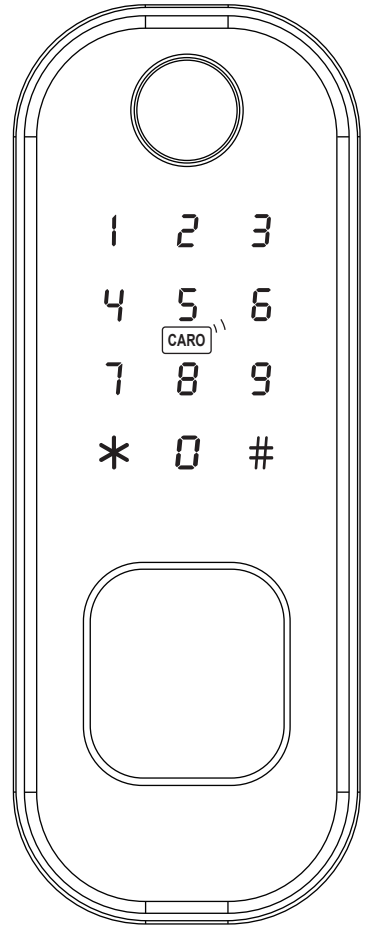


Instruction Manual

Apartment Smart Lock

WDL-R5



• Bitte scannen Sie den QR-Code, um das deutsche Handbuch, das Installationsvideo und die Funktionseinführung zu erhalten

• Escanee el código QR para obtener el manual en español, el video de instalación y la introducción de la función

• Veuillez scanner le code QR pour obtenir le manuel en français, la vidéo d'installation et l'introduction des fonctions

• Отсканируйте QR-код, чтобы получить руководство на русском языке, видео по установке и описание функций

• Leia o código QR para obter o manual em português, o vídeo de instalação e a introdução das funções



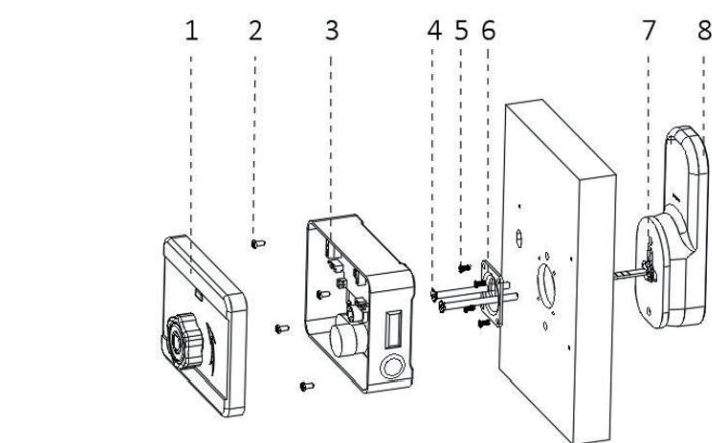
请扫描二维码获取中文的说明书、安装视频及功能介绍

Technical Parameter		
	Item	Parameter
1	Quiescent current	≤50uA
2	Dynamic current	≤180mA
3	Administrator capacity	9
4	Fingerprint capacity	100
5	FP+PWD+ card capacity	300
6	Fingerprint scanner	Semi-conductor
7	Fingerprint recognition	≤1s
8	FP recognition angle	360 degree
9	False rejection rate	≤0.1%
10	False recognition rate	≤0.0001%
11	Acting time	≤0.5s
12	Power	DC 6V
13	Emergency power	DC 5V
14	Working temperature	-25℃-60℃
15	Working relative humidity	20%-90%RH
16	Human voice	YES
17	Keypad	12 digits touching keypad
18	Password length	4-8 digits
19	Virtual password	32 digits
20	Low power warning	4.8±0.2V
21	Unlock time	≤1s

Before installation

1. Professional installation is recommended.
2. To avoid any circuit function fault, please do not crumple the cable.
3. Keep the door open until finishing the installation and lock function test.
4. Please check whether fingerprint, card, password, key, inside knob unlock function well after installation (under initial status, any fingerprint, IC card or 4 digit password is able to unlock).
5. If any function mentioned above doesn't work appropriately, check again if the cable is well connected or if there any improper operation during installation then reinstall it strictly following our diagram.

Installation diagram

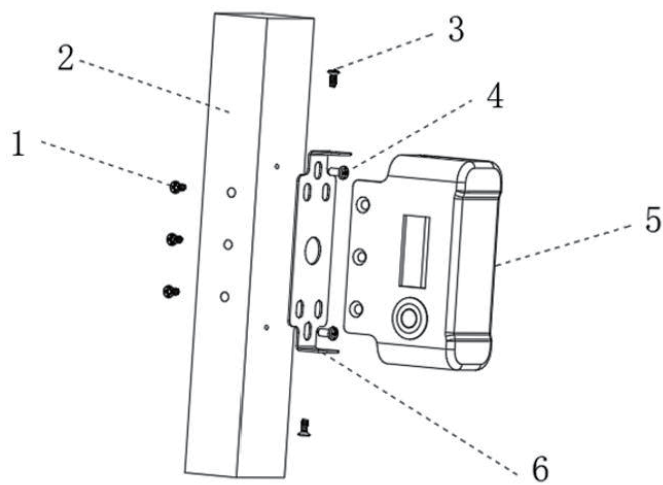


1. Back panel knob
2. Mortise fasten screws
3. Mortise components
4. Connecting screw
5. Panel fasten screw
6. Cylinder panel
7. Cylinder
8. Front panel

Steps:

1. Open the front panel and insert the lock cylinder (refer to diagram 7,8).
2. As shown in the diagram, use the studs to connect the front panel and cylinder panel then tighten the screws to fix (refer to diagram 4,5,6).
3. Fix the rim mortise on the door then cover it with the back panel and fix it (refer to diagram 1,2,3).

Installation diagram



1. Buckle fastening screws
2. Door frame
3. Buckle connecting screws
4. Buckle plate fixing screw
5. Buckle
6. Buckle plate

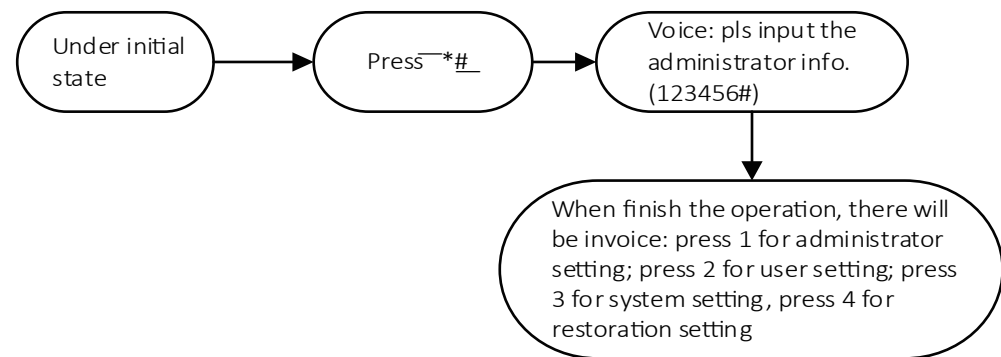
Steps:

1. Use the screws to fix the buckle plate on the door.
2. Use screws to fix the buckle.
3. When finish the installation, test the knob of the rim lock making sure the deadbolt fit the buckle slot well. If the unlock operation is not smooth enough, try adjusting the buckle position.

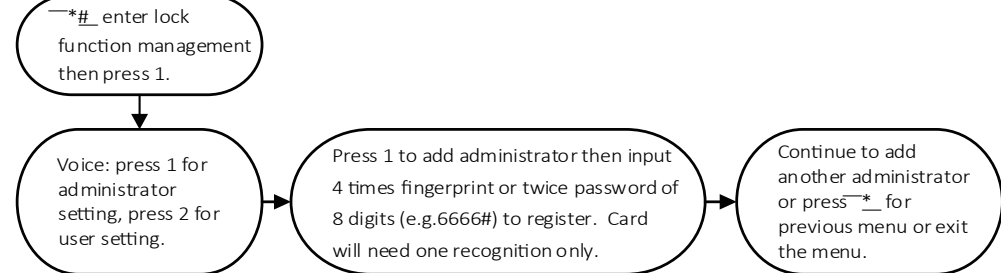
Function and operation

1. Keypad function description.
2. Administrator information: refer to fingerprint, password or IC card administrator.
3. unlock information: refer to the registered fingerprint, password or IC card information (including the administrator and user).
4. "*" key: delete / back key. Enter "*" to delete the input password. Three consecutive "*" operation will clean up all the input information.
5. "#" key: operation confirm key / menu function key.
6. Factory initial status.
7. Factory initial password is 123456#. All fingerprints, IC card or 4 digits password is able to unlock under factory initial status.

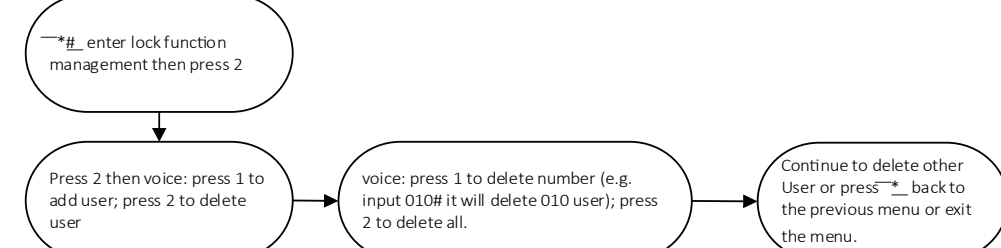
8. When finish administrator registration, unregistered fingerprint, IC card or password will fail to unlock.
9. Lock function management menu.



10. Administrator setting.
11. Add administrator information.

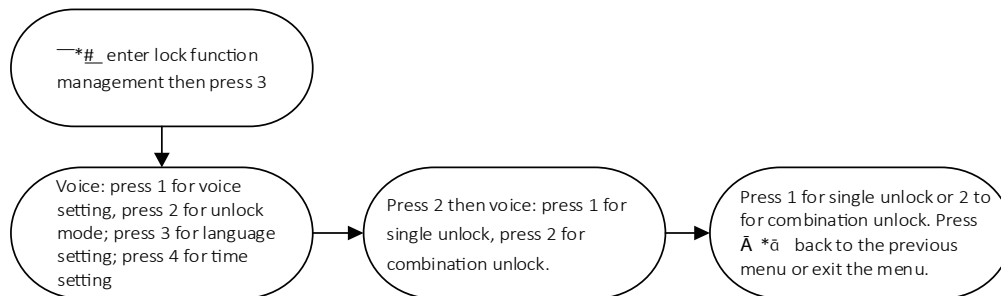


12. Delete user information.

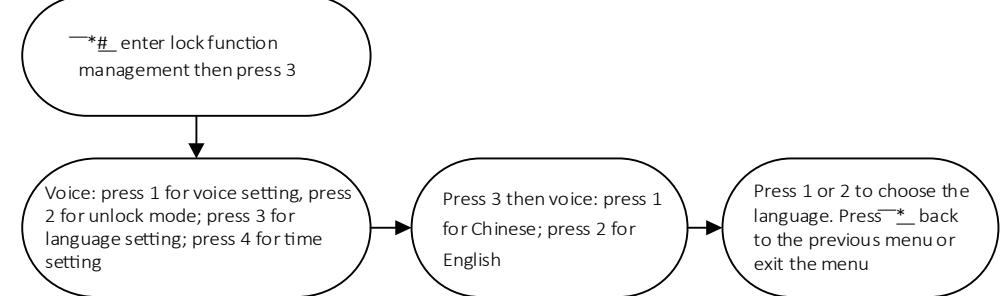


13. System setting.

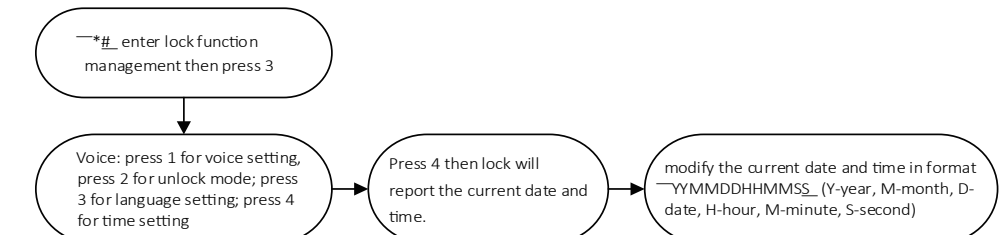
14. Unlock mode setting.



15. Language setting.



16. Time setting.



17. Reset to factory status.

Remote control

1. Add administrator (skip this operation if you have done this).
2. Entering Wi-Fi setting menu.
 - * Press "*"#" to verify the administrator information.
 - * Press 2 to enter user setting menu.
 - * Press 1 then press any key on the remote control when hear the voice instruction.

Other description

1. 5 times wrong password input will cause a 30 seconds keypad lock. During these 30 seconds, lock will not respond to any operation.
2. Anti-peeping password function: unlock by inputting before or after the correct password some random number (no more than 16 bits) then end by # key.
3. The lock will give out warning alarm every unlock operation when voltage is lower than 4.8V. Please replace the battery as soon as possible.
4. Reset operation: Press "SET" on the back panel for 6 seconds (screen number 654321 will automatically flash successively. The initial password will be 123456.
5. Under factory initial status, you can swift the language between Chinese and English by inputting 333666999#.

Preparation for use

- ① Download MOES App on App store or scan the QR code.



Moes application is much more compatible than Tuya smart / smart life application. It also provides a new customized service for controlling scenes through Siri, widgets and scene recommendation. (Note: Tuya smart / Smart Life app is still working, but moes app is highly recommended)

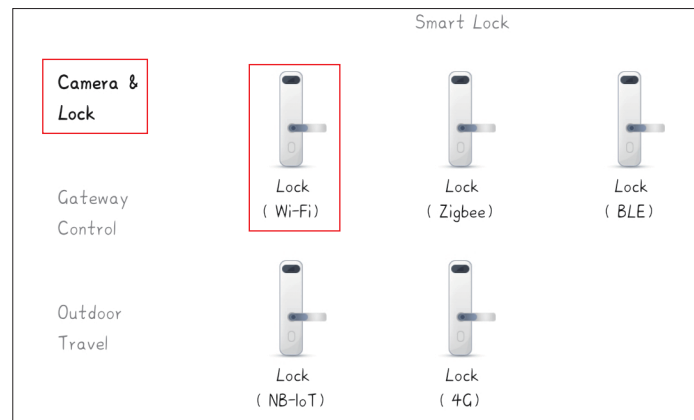
- ② Registration or Log in.
 - Download "MOES" Application.
 - Enter the Register/Login interface; tap "Register" to create an account by entering your phone number to get verification code and "Set password". Choose "Log in" if you already have a MOES account.

Connected to the MOES APP

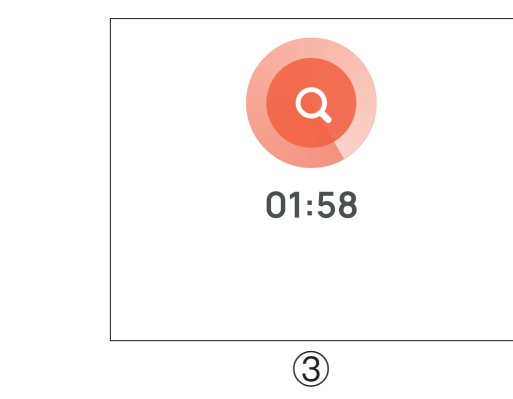
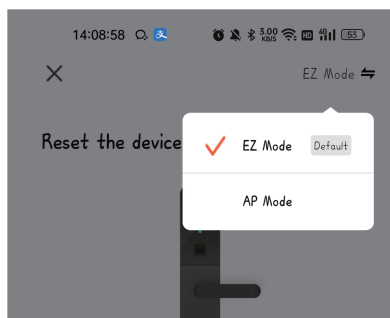
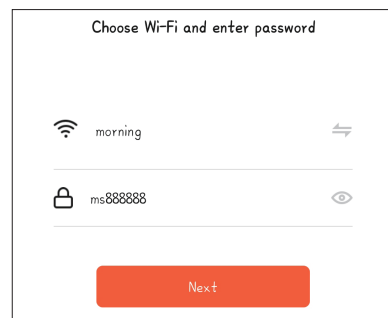
Method One (EZ Mode):

- Press "*"#" to verify the administrator information.
- Press 1 to enter administrator setting menu.
- Press 3 to start the Wi-Fi setting.
- Voice reports press 2 for EZ Mode (screen indicator light flashes rapidly). EZ Mode is recommended.

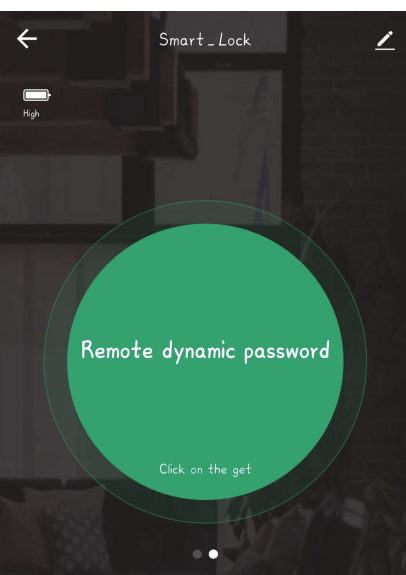
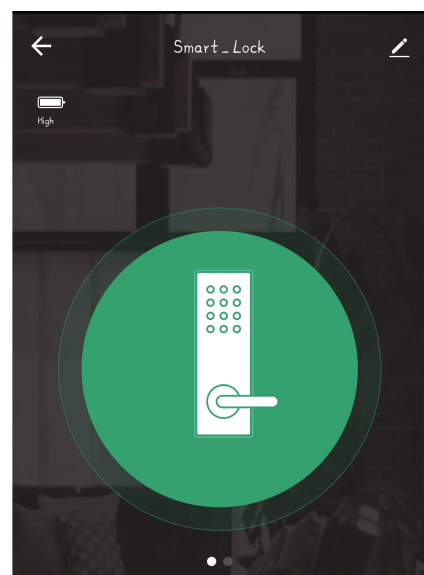
1. Find in MOES APP the "Camera and Lock" and press "door lock (Wi-Fi)" and follow the instruction to finish adding lock.



2. Connect your phone to the WIFI and verify that the door lock screen indicator flashes quickly. Click next.(mind to awake the lock when adding the lock.)



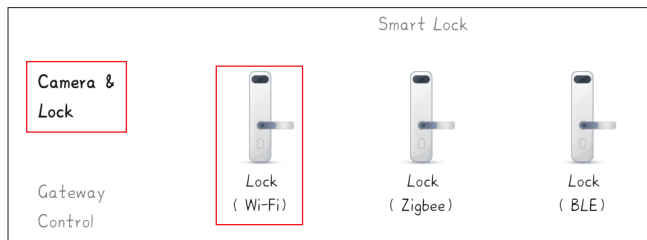
3. Enjoy your smart life with home automation.



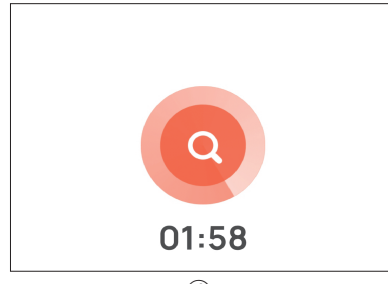
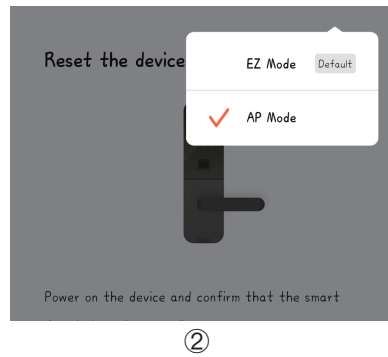
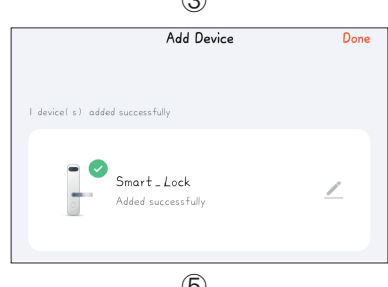
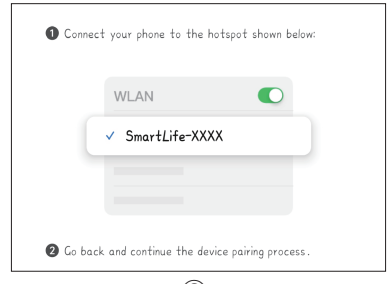
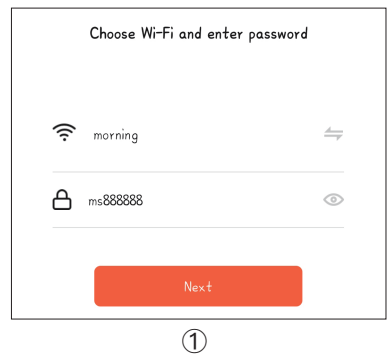
Method Two (AP Mode):

- Press "*"#" to verify the administrator information.
- Press 1 to enter administrator setting menu.
- Press 3 to start the Wi-Fi setting.
- Voice reports press 1 for AP Mode (screen indicator light flashes slowly);

1. Find in MOES APP the "Camera and Lock" and press "door lock (Wi-Fi)" and follow the instruction to finish adding lock.



2. Connect the phone to WIFI, switch AP Mode and confirm that the lock screen indicator flashes slowly. Click Next to connect WIFI to the device hotspot. After the connection is successful, start searching for devices.



SERVICE

1. During the free warranty period, if the product breaks down during normal use, we will offer free maintenance for the product.
2. Natural disasters/man-made equipment failures, disassembly and repair without the permission of our company, no warranty card, products beyond the free warranty period, etc., are not within the scope of free warranty.
3. Any commitment (oral or written) made by the third party (including the dealer/service provider) to the user beyond the warranty scope shall be executed by the third party.
4. Please keep this warranty card to ensure your rights.
5. Our company may update or change the products without notice. Please refer to the official website for the updates.

RECYCLING INFORMATION

All products marked with the symbol for separate collection of waste electrical and electronic equip ment (WEEE Directive 2012/19 / EU) must be disposed of separately from unsorted municipal waste. To protect your health and the environment, this equipment must be disposed of at designated collection points for electrical and electronic equipment designated by the government or local authorities. Correct disposal and recycling will help prevent potential negative consequences for the environment and human health. To find out where these collection points are and how they work, contact the installer or your local authority.



WARRANTY CARD

Product Information

Product Name _____

Product Type _____

Purchase date _____

Warranty Period _____

Dealer Information _____

Customer's Name _____

Customer Phone _____

Customer Address _____

Maintenance Records

Failure date	Cause Of Issue	Fault Content	Principal

Thank you for your support and purchase at we Moes, we are always here for your complete satisfaction, just feel free to share your great shopping experience with us.



If you have any other need, please do not hesitate to contact us first, we will try to meet your demand.

FOLLOW US

- MOES.Official @moessmart @moes_smart
- @moes_smart @moes_smart www.moes.net

UK REP EVATOST CONSULTING LTD
Address: Suite 11, First Floor, Moy Road
Business Centre, Taffs Well, Cardiff, Wales,
CF15 7QR
Tel: +44-292-1680945
Email: contact@evatmaster.com

EC REP AMZLAB GmbH
Laubenhof 23, 45326 Essen
Made In China

Maker:
WENZHOU NOVA NEW ENERGY CO.,LTD
Address: Power Science and Technology Innovation
Center, NO.238, Wei 11 Road, Yueqing Economic
Development Zone, Yueqing, Zhejiang, China
Tel: +86-577-57186815
After Service Email: service@moeshouse.com