

To start using your Birdfy Nest, you should:

1. Fully charge the camera for 10 hours with the provided cable (DC5V / 1A).
2. Install the exterior camera (p6-8).
3. Download our app and sign up for an account (p5).
4. Press and hold the power button to turn on the camera, and pair the camera with your phone following the in-app instructions.
5. Find a suitable spot to mount your Birdfy Nest (p9-11).
6. Connect your Birdfy Nest to the solar panel (p12-16).
7. Wait for your first residents to move in!

1

Setting up With the Netvue App



Download on the
App Store

GET IT ON
Google Play

Please download the Netvue App from the App Store or Google Play and follow the in-app instructions to complete the set-up process.

Status Light

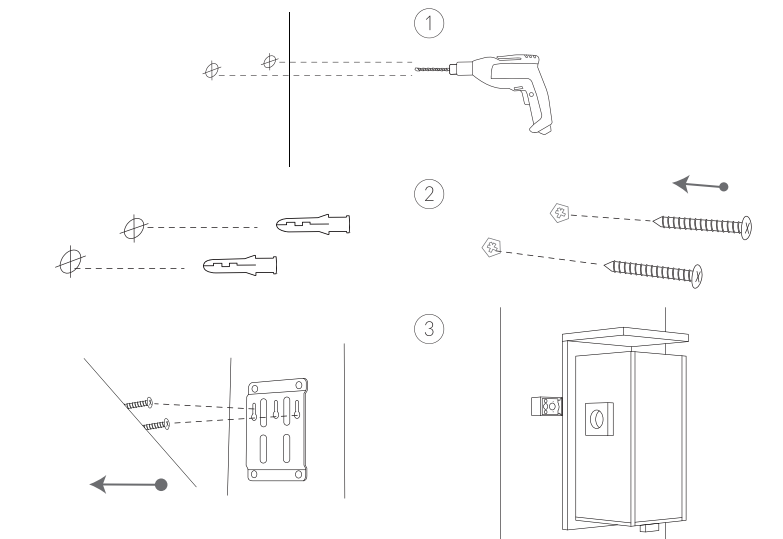
This product uses status light to communicate.

Status Light	Description
Flashing yellow	Charging
Solid yellow	Fully charged
Flashing blue	Connecting to Wi-Fi
Solid blue	Working

5

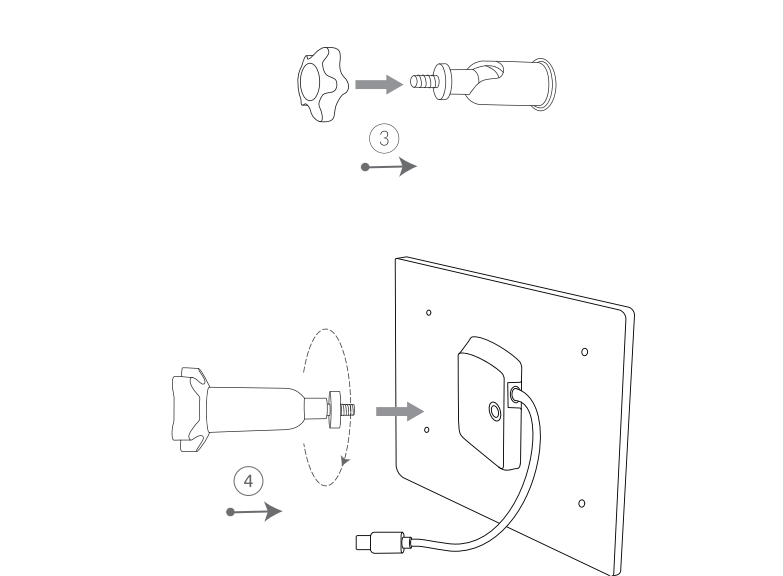
Mounting Your Birdfy Nest

Wall-mounted



- Step 1:** Use the provided drill template to mark the locations of the holes, then use an electric drill (15/64", 6mm) to drill two holes.
- Step 2:** Drive the provided plastic anchors into the holes. Skip this step if you are mounting on wood. Then drive in the mounting screws.
- Step 3:** Hang your Birdfy Nest on the screws. Make sure it's level and securely attached.

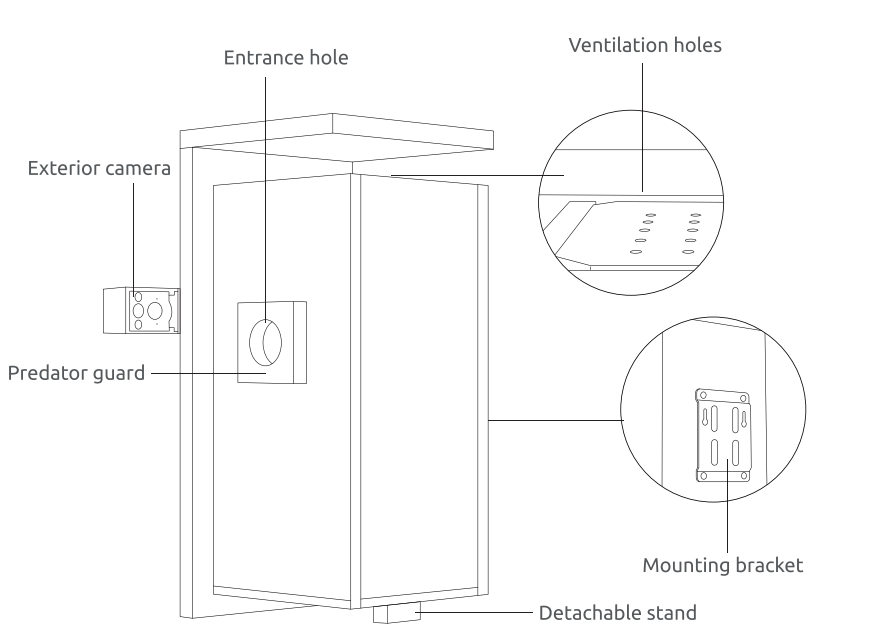
9



- Step 3:** Slide the universal joint into the screw cap until it reaches the end.
- Step 4:** Then attach the joint to the back of the solar panel by screwing it in.

13

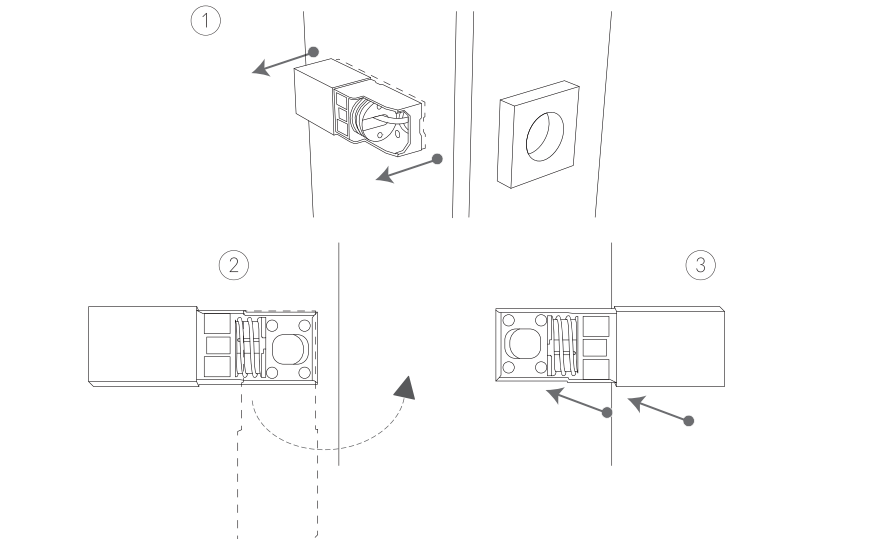
Exterior Structure



2

Assembling Your Birdfy Nest

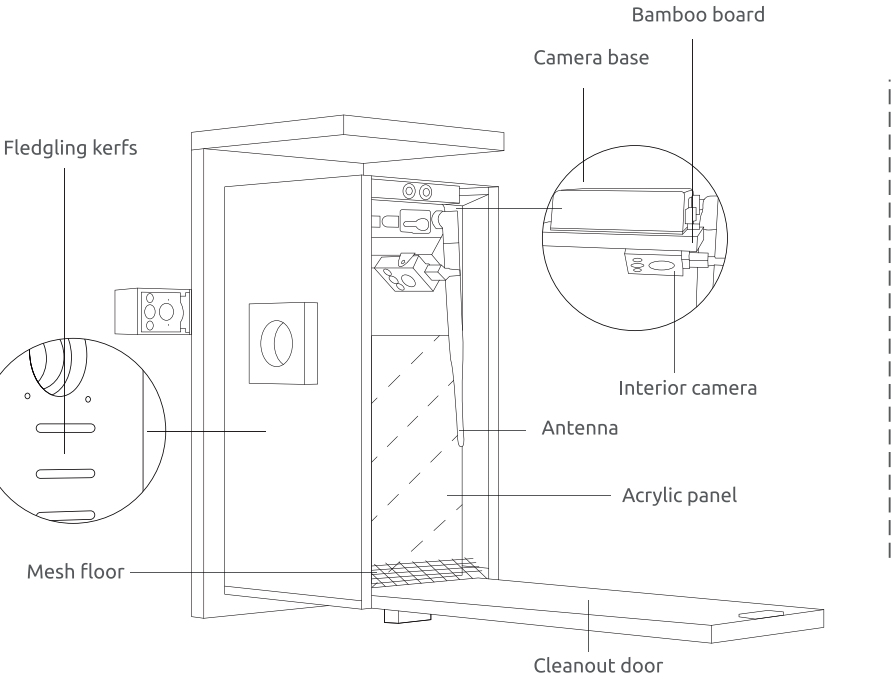
Installing the exterior camera



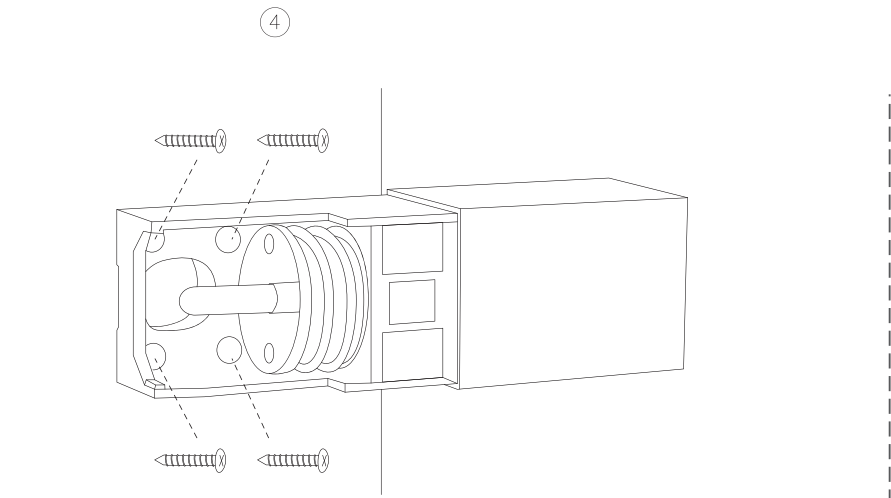
- Step 1:** Remove the tape from the camera. Gently pull the camera out from the birdhouse until it dangles.
- Step 2:** Rotate the camera 180 degrees. Align the two protrusions on the back of the camera with the corresponding holes on the birdhouse.
- Step 3:** Firmly push until the camera snaps into place.

6

Interior Structure



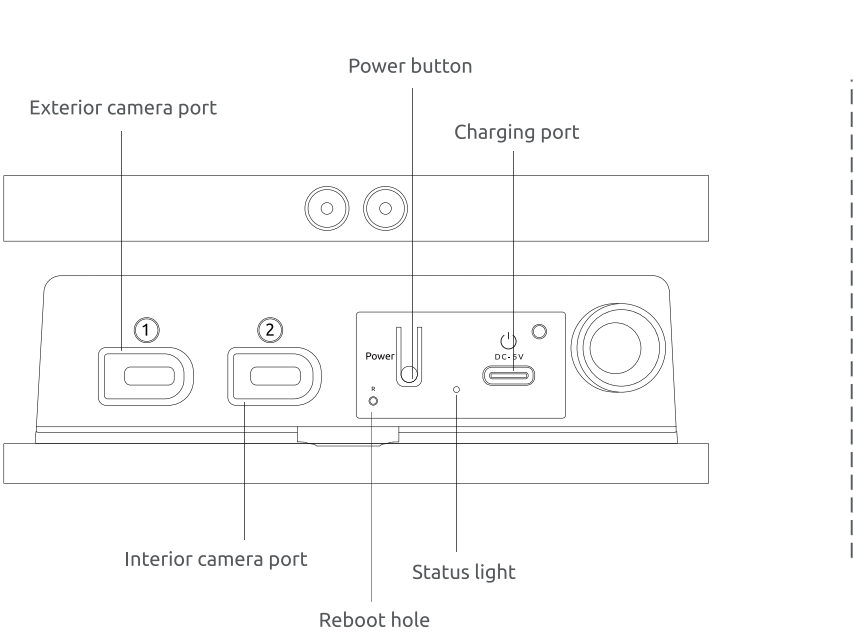
3



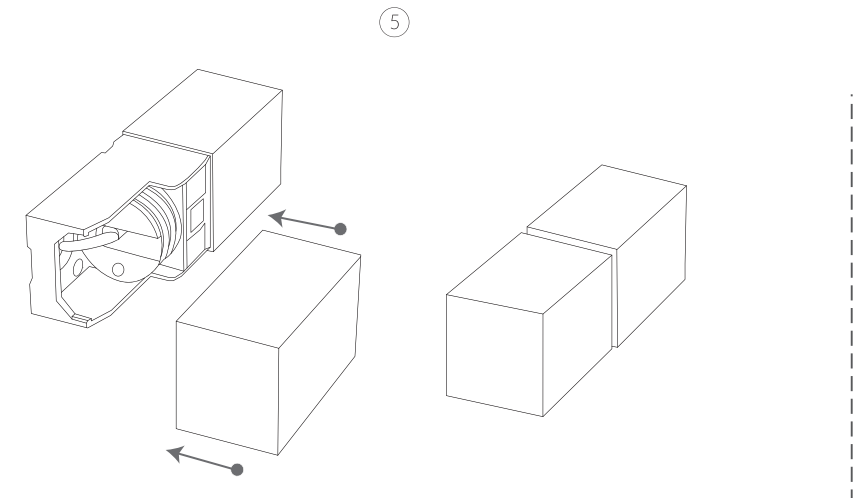
- Step 4:** Use the four screws provided to secure the camera in place.

7

Camera Structure



4

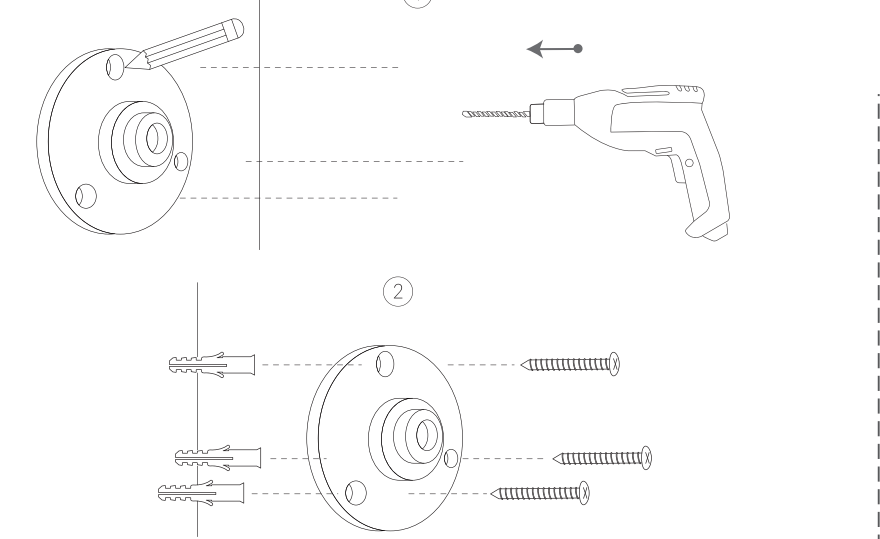


- Step 5:** Cover the exterior camera with the protective cap.

8

Mounting the Solar Panel

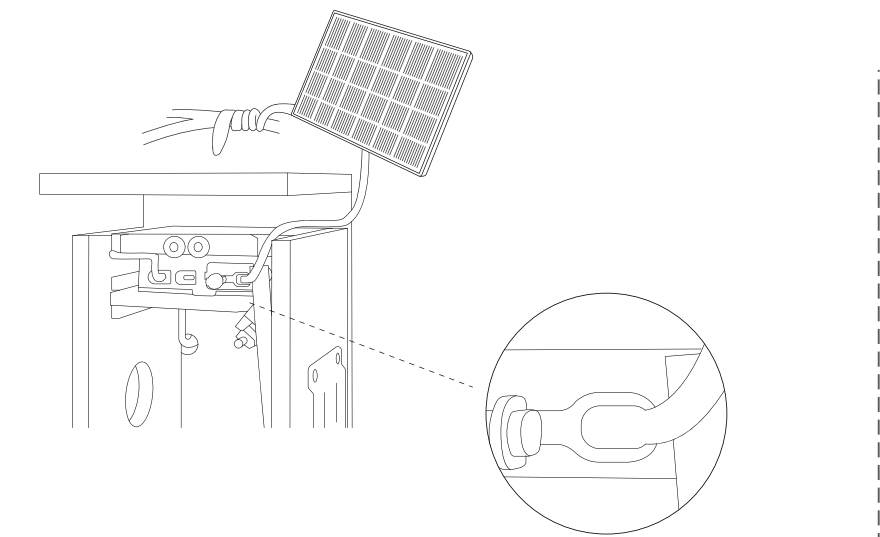
Wall-mounted



- Step 1:** Use the provided wall mount to mark the positions of the holes on the wall with a pencil. Drill three holes with an electric drill (15/64", 6mm).
- Step 2:** Drive the provided plastic anchors into the holes. Align the screw holes on the wall mount with the anchors, and then drive in the screws to fix the wall mount on the wall.

12

Connecting to the solar panel



- Connect the solar panel to the camera base's charging port. Then, pull the cable through the opening at the top of the birdhouse.

16

FCC Statement
Note: This equipment has been tested and found to comply with the limits for a Class B digital device, pursuant to part 15 of the FCC Rules. These limits are designed to provide reasonable protection against harmful interference in a residential installation. This equipment generates, uses and can radiate radio frequency energy and, if not installed and used in accordance with the instructions, may cause harmful interference to radio or television communications. However, there is no guarantee that interference will not occur in a particular installation. If this equipment does cause harmful interference to radio or television reception, which can be determined by turning the equipment off and on, the user is encouraged to try to correct the interference by one or more of the following measures:
—Reorient or relocate the receiving antenna.
—Increase the separation between the equipment and receiver.
—Connect the equipment into an outlet on a circuit different from that to which the receiver is connected.
—Consult the dealer or an experienced radio/TV technician for help.

This device complies with part 15 of the FCC Rules. Operation is subject to the following two conditions: (1) This device may not cause harmful interference, and (2) this device must accept any interference received, including interference that may cause undesired operation.

Any changes or modifications not expressly approved by the party responsible for compliance could void the user's authority to operate the equipment.

This equipment complies with FCC radiation exposure limits set forth for an uncontrolled environment. This equipment should be installed and operated with minimum distance 20cm between the radiator & your body.