

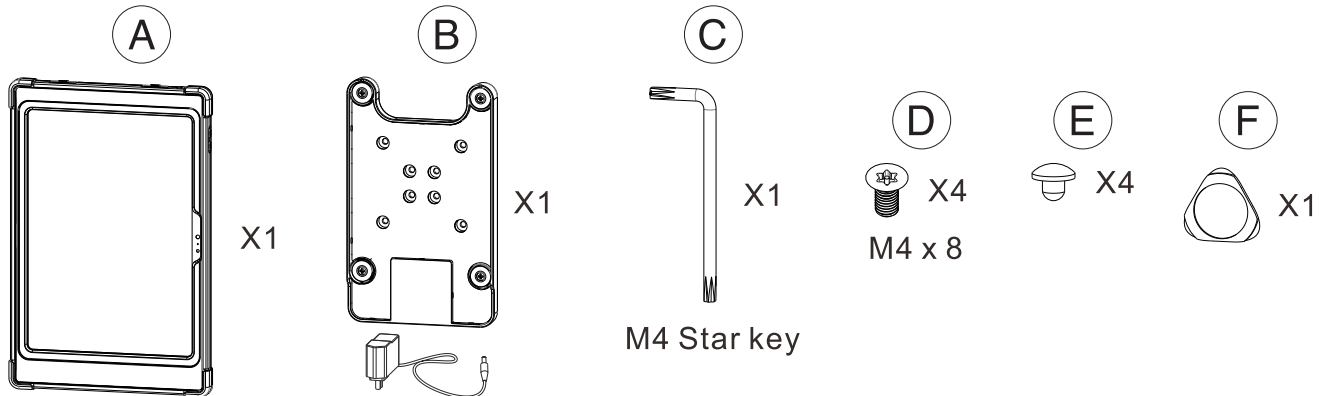


Wireless Inductive Charging Case w/ Security Lock

PAD-SICCB

Caution: For proper results, please make sure your device is properly aligned with the inductive charging plate.
Caution: Please do not place or store the product on or near high-temperature areas like heating devices, open flame, or in hot cars in extreme heat.
Caution: Please do not place or store the product in or near water, steam, or in any wet, humid, or damp places.

CONTENTS:



Power Supply:

Input : AC 100-240V 50/60Hz
Output: DC12V 1.5A
Rating power: 18W
Cable Length: 1.8M
DC Plug: 5.5*2.1mm male DC Plug

Inductive Charging Case:

Qi Standard: V1.2.4
Input: DC12V 1.3A
Output: DC5V 2.4A(Max.)
Rating Power: 15W
Efficiency: 80-85%(Max.)
Inductive Distance: 3-6mm

Input Socket: 5.5*2.1mm female DC socket

Output Plug: Apple Lightning Plug

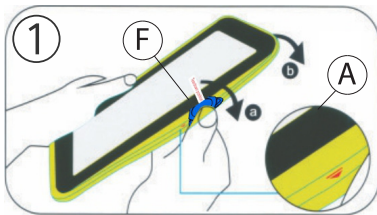
Charging Time : 4-4.5 hours)

Environmental Requirements:

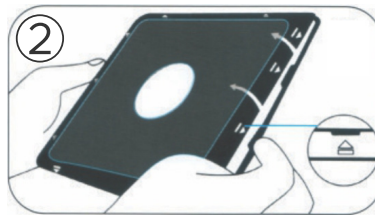
Operating Temperature for iPad: 32°F to 95°F / 0°C to 35°C
Nonoperating Temperature: -4°F to 113°F / -20°C to 45°C

INSTALLATION:

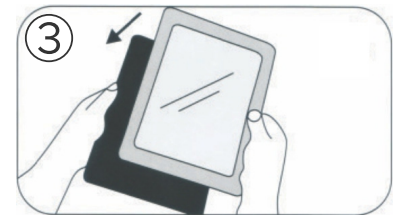
1. Inserting Tablet into Enclosure



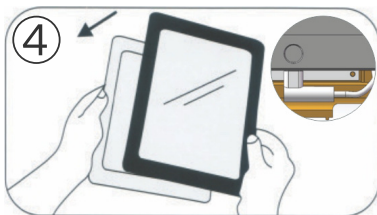
Peel the external silicone sleeve from the internal hard case using component (F).



To open case, apply gentle pressure to the small clips (noted on the diagram by arrows). The internal hard case will open when all four sides are unclipped.



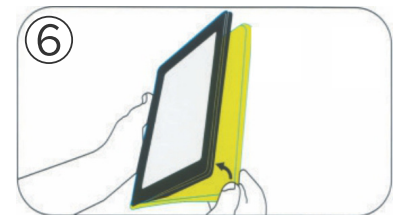
Insert the iPad into the back portion of the hard cover.



Once the tablet device is inside, plug the charging cable into the power socket. Then place the internal front (hard) cover on top of the case, and gently clip all four sides shut.

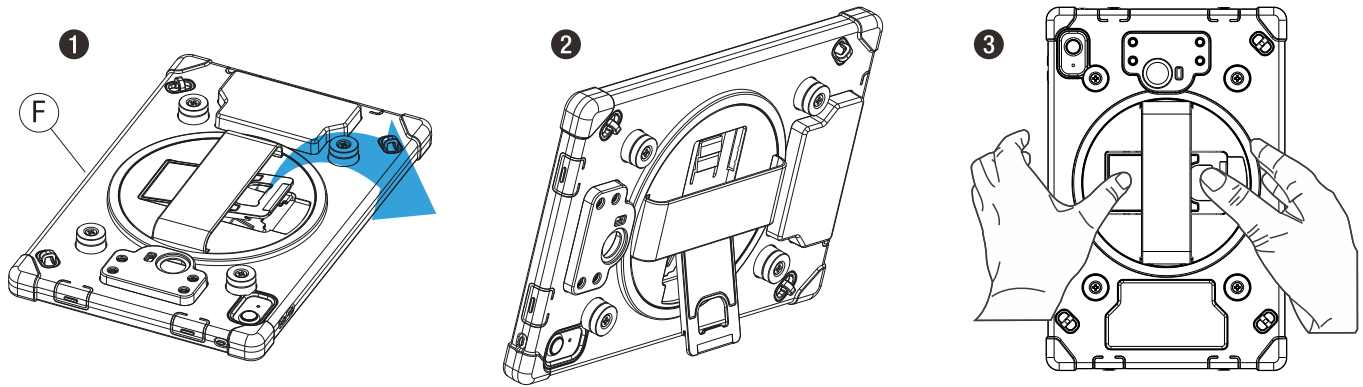


Tighten the anti-theft screw with the included star key (C) if you want the case security.



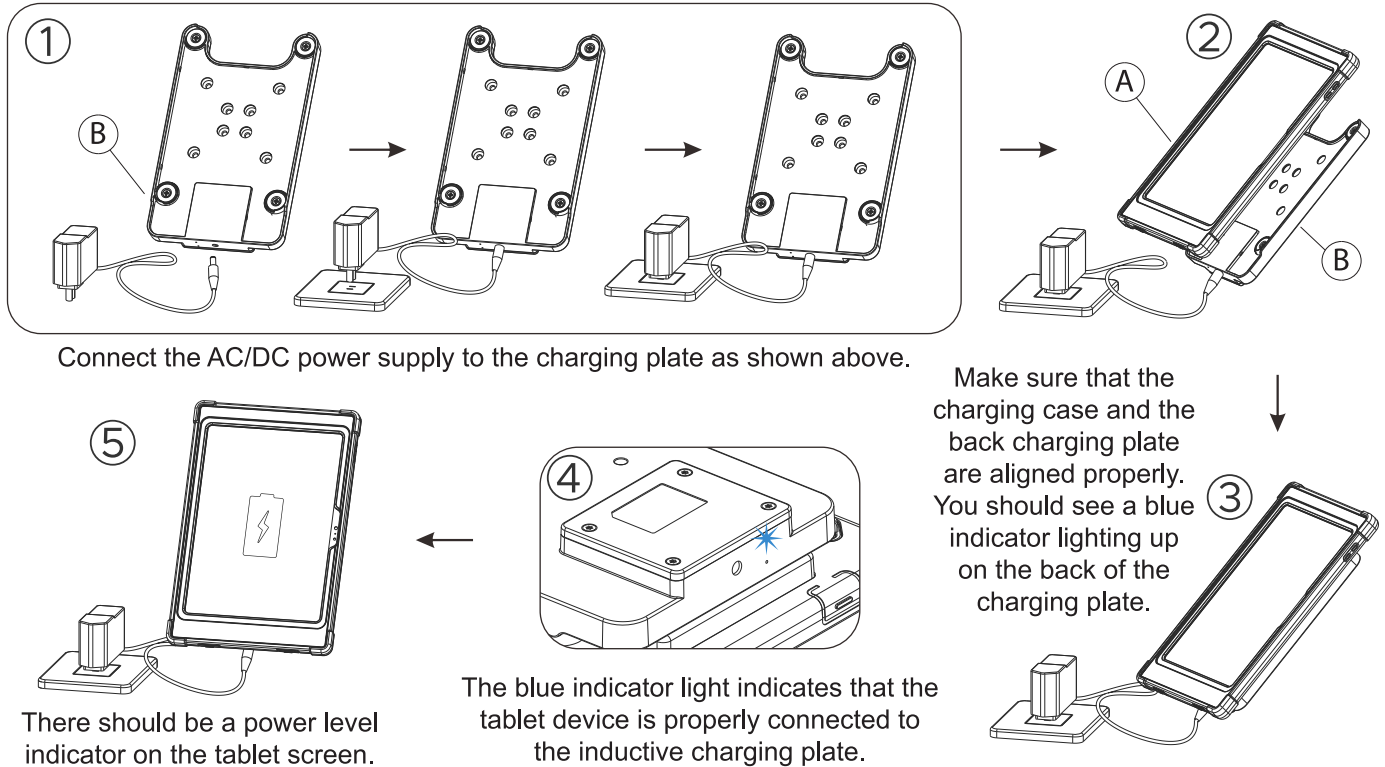
Reinstall the external silicone rubber sleeve.

2. Setting the Cover in Tabletop or Handheld Mode



1. Locate kickstand at case (A) rear and fold out underneath strap.
2. Display tablet at desired viewing angle.
3. Press kickstand in to return to handheld mode.

3. Charging the Tablet Device



4. Using with kiosk stand (ADD-ICCSTAND)

