

CIRCLE VIEW

Wired Doorbell
Wired Doorbell

Installation | Installation

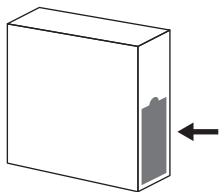


Installing this product requires competency and access to power tools and comfort with electric power.
Installing this product requires competency and access to power tools and comfort with electric power.

Redeem installation Redeem installation

logi.com/circleviewdoorbell/redeem

Access your unique code on the side of this box
Access your unique code on the side of this box



logi.com/circleviewdoorbell/support

Apple HomeKit

Please follow the instructions in the web setup guide to complete pairing supported by your iOS device.

Please follow the instructions in the web setup guide to complete pairing supported by your iOS device.



apple.com/iOS/home

logitech®

620-XXXXXX 002

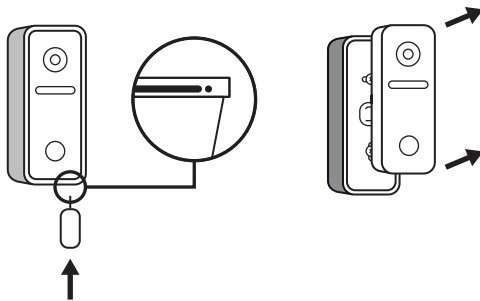
© 2020 Logitech, Logi and the Logitech Logo are trademarks or registered trademarks of Logitech Europe S.A. and/or its affiliates in the U.S. and other countries. Apple, the Apple logo, Apple HomeKit, iOS and iCloud are trademarks of Apple Inc., registered in the U.S. and other countries. Use of the Works with Apple HomeKit badge means that an accessory has been designed to work specifically with the technology identified in the badge and has been certified by the developer to meet Apple performance standards. Apple is not responsible for the operation of this device or its compliance with safety and regulatory stands. All other trademarks are the property of their registered owners. Logitech assumes no responsibility for any errors that may appear in this manual. Information contained herein is subject to change without notice.

© 2020 Logitech, Logi and the Logitech Logo are trademarks or registered trademarks of Logitech Europe S.A. and/or its affiliates in the U.S. and other countries. Apple, the Apple logo, Apple HomeKit, iOS and iCloud are trademarks of Apple Inc., registered in the U.S. and other countries. Use of the Works with Apple HomeKit badge means that an accessory has been designed to work specifically with the technology identified in the badge and has been certified by the developer to meet Apple performance standards. Apple is not responsible for the operation of this device or its compliance with safety and regulatory stands. All other trademarks are the property of their registered owners. Logitech assumes no responsibility for any errors that may appear in this manual. Information contained herein is subject to change without notice.

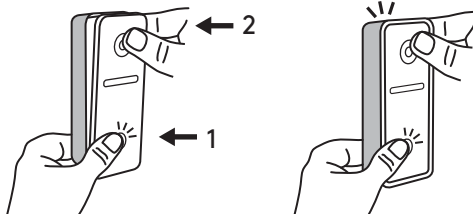
Hardware reset | Hardware reset

House power
House power

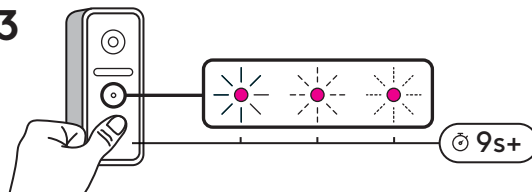
1



2

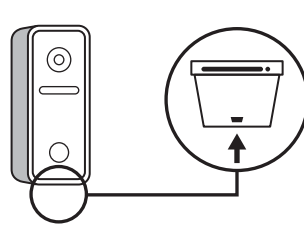


3

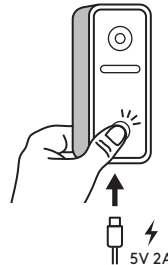


USB
USB

1



2



3

