

Trail Camera

Model: WiFi900Pro

Use Manual



WiFi + APP



Bluetooth



30FPS



36MP



H.265

SPECIFICATIONS

Photo recording

Photo resolution	36MP/30MP/24MP/20MP/16MP/12MP
File format	.JPG
Time lapse mode	5min / 10min / 30min / 60min
Multi-shot mode	Up to 9 photos per detection
Stamp (photos and video)	Date, time, temperature (°C /°F) and moon phase Camera/Video/Camera & video/Time lapse
Capture mode	

Video recording

Video resolution	4K / 2K/ 1080P / 720P / VGA(480P)
File format	.MP4 / H.265
Video length	5s /10s / 30s / 60s / 90s
Capture mode	Colorful mode at daytime, black and white mode at night

WiFi / APP / Bluetooth

Scan QR code to Download	Bluetooth	WiFi On / Off
WIFI Vision Distance 50M	Bluetooth Connection Distance	5M



App (IOS)
WiFiCameraSum



App (Android)
WiFiCamera

Memory storage

Support	<ul style="list-style-type: none">• Internal memory: none• External memory: Micro SD card (up to 256GB, Not included)
---------	--

Viewing

Built-in screen	TFT 2.0"
-----------------	----------

Power source

Alkaline Battery	1.5V AA Battery*8 Rechargeable
Lithium Battery	lithium AA battery DC 12V 1A
External Power Jack	(3.5x1.35mm)

Detection system

Motion Sensor	1x PIR
Detection Angle	120°
Detection Range	Adjustable from 1 to 98 Ft
Trigger Speed	0.2second
Delay between each detection	1/5/10/30 seconds, 1/5/10/30 minutes

Night time illumination system

Infrat LEDs	44pcs LEDs
Flash Range	< 98 Ft
Exposure	Auto / 100 / 200 / 400

Optical field of view

120°

Dimensions

150mm" x 100mm" x 60mm"

Recommendations

Operating temperature	(-4°Fto + 158°F) (-20°C to + 70°C)
-----------------------	------------------------------------

Waterproof level

IP 66

THE BASICS





Color Display Screen

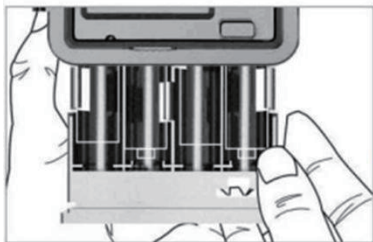
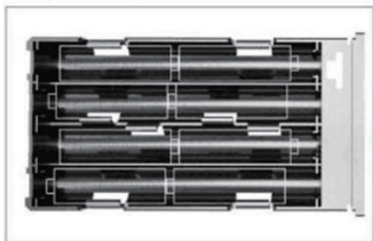
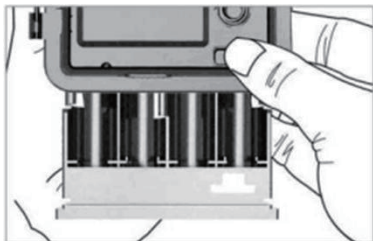
USB Port
Micro SD
Card slot



**Battery Compartment
button**

Mode Switch

INSTALLATION



Step1

- ① Open the battery cover and insert 8 batteries(AA) following to the positive and the negative battery sign.

Close the battery cover to

Resist water and dust

②

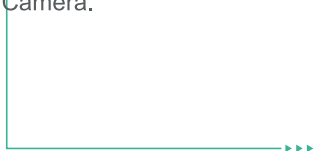
⚠ WARNING

Be Sure to put AA batteries in the correct direction.
Inserting batteries incorrectly will cause permanent damage.

③

Step 2

Insert Micro SD(Not included) memory card to Trail Camera.



Step 3



① Slide the mode switch from **OFF** to **TEST** to activate the camera and view the user setup screen.

② And then slide the mode switch from **TEST** to **ON**.

③ The camera will start working after 10 seconds countdown, meanwhile the red indicator light will blink.

Step 4

Scan the QR codes below **or** search for “WiFiCameraSum” on the Apple appstore
or search for “WiFiCamera” on the Google Play to download the app.

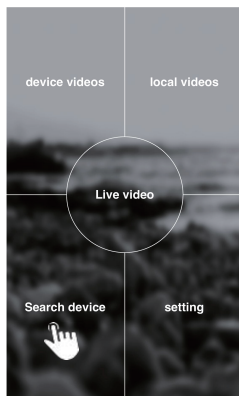


IOS

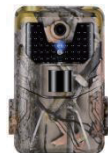
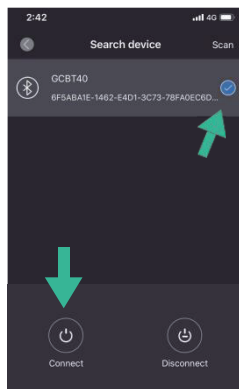


Android

Step 5

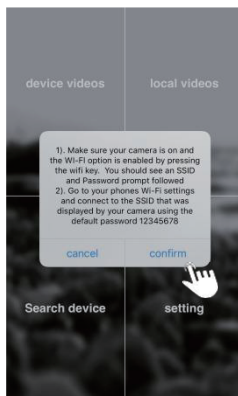
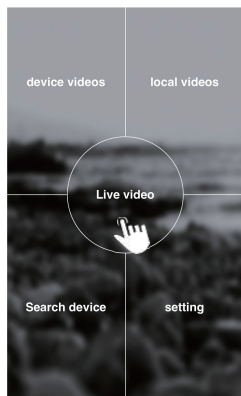


- 1 Open the APP on your cellphone and tap “Search Device” at the left lower corner



- 2 select “GCBT40” and then tap “Connect” to connect your phone and camera with Bluetooth. You can see the camera flashing yellow light one time and then flashing blue light.

Step 7



- 1 Back to the main page of app and then tap “Live video”.
- 2 Go to WiFi setting on your phone, select
- 3 “CAM_XXXXXXXXXXXX” Enter password “12345678”.
(WiFi name and password can be changed in the APP when connected)

GETTING START

Night

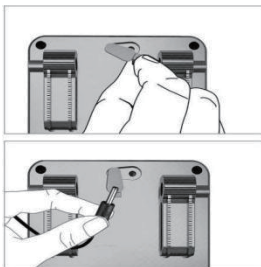


Day



EXTERNAL POWER SUPPLY

Use 12V DC Power source (Not included)



OPERATING BUTTON



MENU Menu Button -- Menu Setting

Shutter Shutter Button -- Take Video / Photo manually / Quit

↑ ↓ UP / Down -- Switch Video or Photo Mode

→ Right -- Replay mode, press UP / Down to replay, press Menu to Deleteor Protect

← Left -- Play / Stop the video

● WiFi Button: ON/OFF WiFi / OK Button

SETUP MENU



Setup	Sub Menu	Description
Mode	Camera,video,camera & video,Timelapse	Picture,video,picture and video,taking picture regular
Resolution	4K,2K, 1080P, 720P, WVGA(480P)	Video Resolution
Video Length	5/10/30/60/90 Seconds	Each Video max 90 sec, default 10sec
Record Audio	On / Off	Video With Sound

Setup	Sub Menu	Description
Image Size	36MP/30MP/24MP/20MP/ 16MP/12MP	Image resolution
Interval	1/5/10/30sec,1/5/10/30min	Max 30 minutes delay
Time Lapse	5/10/30/60 minutes	Take pic every 5min
Sequence	1/3/6/9 pictures	Max 9 pics one shot
ISO	Auto/100/200/400	Exposure level
Over write	On / Off	Cycle Recording
PIR Sensitivity	High/Medium/Low	Adjust PIR sensitivity
Language	EN/FR/DE/IT/ES/POR/ HRV/DAN/SVE/SUO/POL /PYC	Adjust PIR sensitivity
Frequency	50HZ / 60HZ	Screen refresh rate
Camera ID	CAM000	6 numbers or letters
Password	On / Off	4 numbers
Working Timer	00:00:00 to 23:59:59	N/L
Date / Time	DD/MM/YY	N/L
Format	OK / Cancel	Format memory card
Default Setting	OK / Cancel	Back to default

In The box



▲ Camera



▲ Manual



▲ Mounting Strap



▲ Card reader

TROUBLESHOOTING

Q: What is the range of WiFi and Bluetooth?

A: The range of camera WiFi is about 98Ft at forest or indoor and 328Ft at open space. The range of camera Bluetooth is between 16 to 26 Ft.

Q: How close do i need to be to turn the wifi on using the bluetooth?

A: The maximum distance of the camera's Bluetooth switch is 5 meters

Q: Does it have a connection to be wired for 9vdc or 12vdc instead of battery?

A: Yes, you can use 9vdc for this camera, there is a power connector in the box, dedicated to the external power supply.

Recommend using 8*1.5V AA batteries in this trail camera to obtain maximum battery life.(NOT INCLUDED)

Q: Can you change WiFi name and password of the camera?

A: Yes, you can change different WiFi name and your own password by app on phone.

Q: Can you connect to your in-home WiFi and the internet provided the camera

A: WiFi900 Bluetooth trail camera connects with the phone's WiFi, not in-home WiFi/Internet. Download the APP on your phone and then connect with WiFi. You can adjust the setting and check the photo /video on the phone directly.

Q: Is the app available for iPhone?

A: Yes, Trail Camera use "WiFiCameraSum" APP for Apple Store and "WiFiCamera" APP for Google Play, it's available for Android and IOS system phone.