



Recycle Disassemble Instruction (Dismantled Information)

**Requirements according to ANNEX VII of DIRECTIVE 2012/19/EU
on waste electrical and electronic equipment (WEEE)**

Materials and components with hazardous content

LCDs may contain hazardous substances like Pb and BFRs which are covered by exemptions under the RoHS directive. However, the majority is present in the printed circuit boards assembly. In order to reduce emissions as much as possible, a complete disposal of the old appliance is required. This treatment may only be performed in authorized handling plants.








Product Name: LCD Monitor

Model No.: GW2780,GW2780E,GW2780T,BL2780,BL2780T



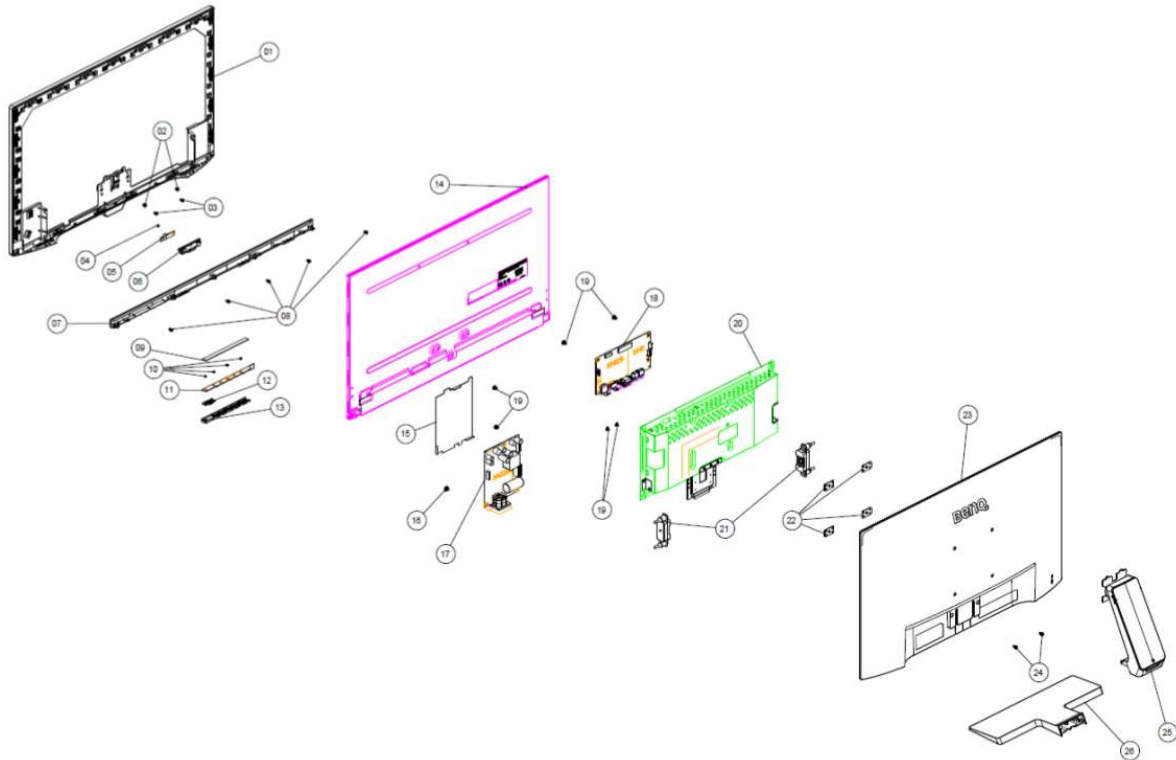


Disassembly Tools

Tool	picture
Philips Screwdriver for M3 Screw	 A red-handled Philips screwdriver with a silver metal shaft and a black Phillips tip, lying horizontally on a light brown wooden surface.
Nosed Pliers	 A pair of red-handled nose pliers with long, thin jaws, lying horizontally on a light brown wooden surface.
Diagonal Cutting Pliers	 A pair of red-handled diagonal cutting pliers with short, angled jaws, lying horizontally on a light brown wooden surface.
Slotted screwdriver	 A green-handled slotted screwdriver with a silver metal shaft and a flat metal tip, lying horizontally on a light brown wooden surface.
Six Point Sockets	 A yellow-handled screwdriver with a silver metal shaft and a six-point star-shaped tip, lying horizontally on a light brown wooden surface.
Philips Screwdriver for M2.5 Screw	 A red-handled Philips screwdriver with a silver metal shaft and a black Phillips tip, lying horizontally on a light brown wooden surface.
Knife	 A silver metal folding knife with a black handle and a partially extended blade, lying horizontally on a light brown wooden surface.



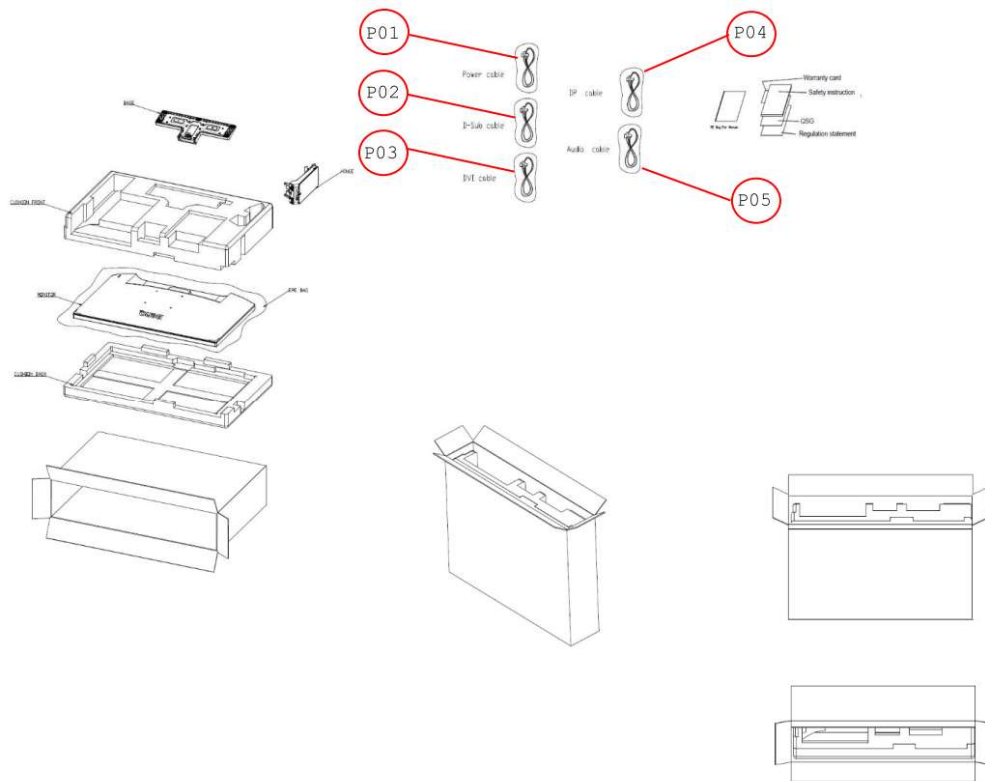
1. Product exploded view



No	Part Name	Qty
1	Middle-Frame	1
2	Screw	2
3	Screw	2
4	Screw	1
5	BI-PCB	1
6	BI-Lens	1
7	Bezel-Deco	1
8	Screw	5
9	Key-Sponge	1
10	Screw	4
11	Key-PCB	1
12	OSD-Key-Lens	1
13	OSD-Key	1
14	Panel	1
15	G70-Power-PCB-Mylar	1
16	Screw	1
17	Power-PCB	1
18	Scalar-PCB	1
19	Screw	6
20	Main-Frame	1
21	1W-Speaker	2
22	Vesa-Cover BKT	4
23	Rear-Cover	1
24	Screw	2
25	Hinge-ass'y	1
26	Base-ass'y	1



2. Package view





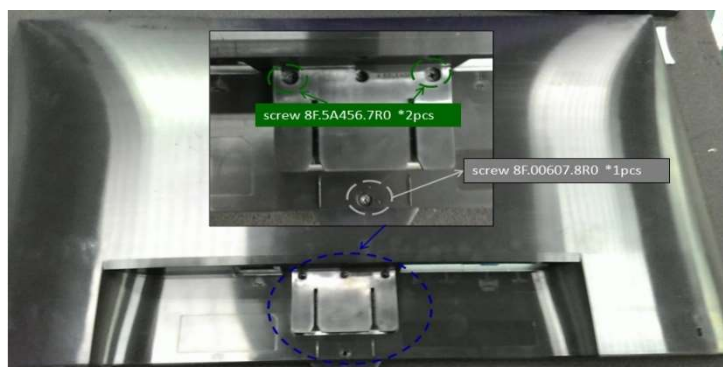
Disassembly process



1. Disassemble Stand

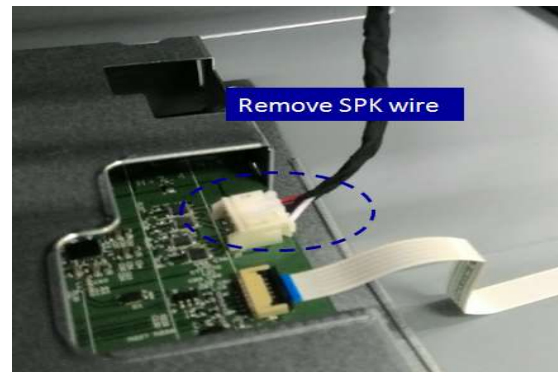


2. Unscrew

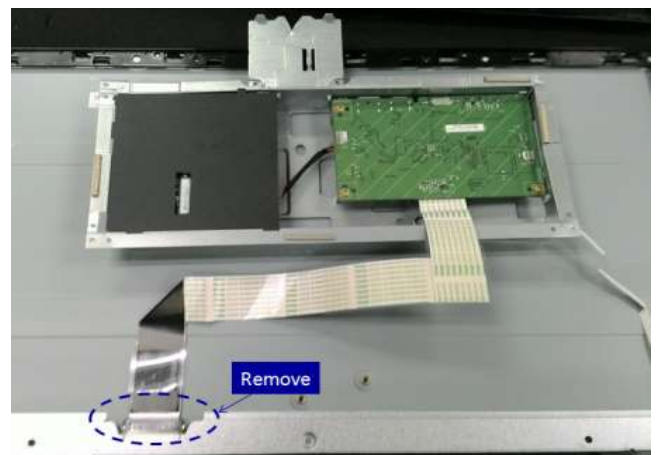
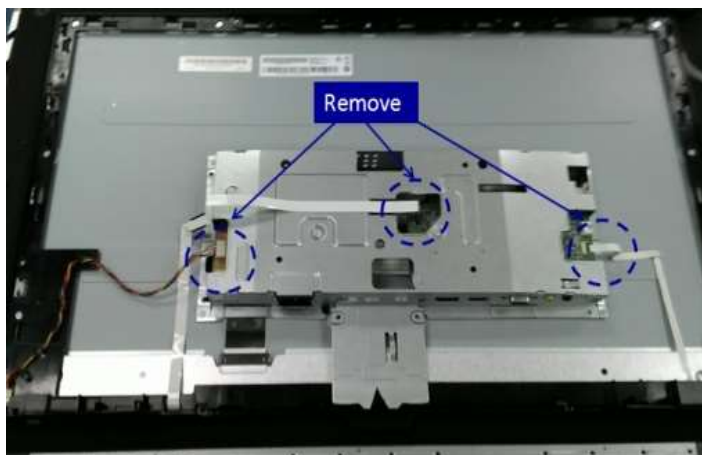




3. Disassemble RC



4. Disassemble Internal





5. Disassemble DECO



6. Unscrew MF & PNL screw*9 pcs



7. Disassemble MF & Panel

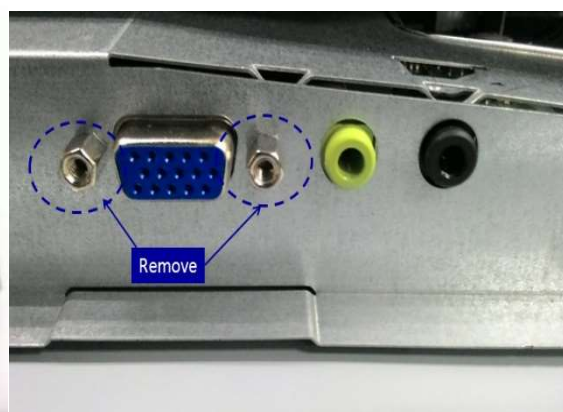




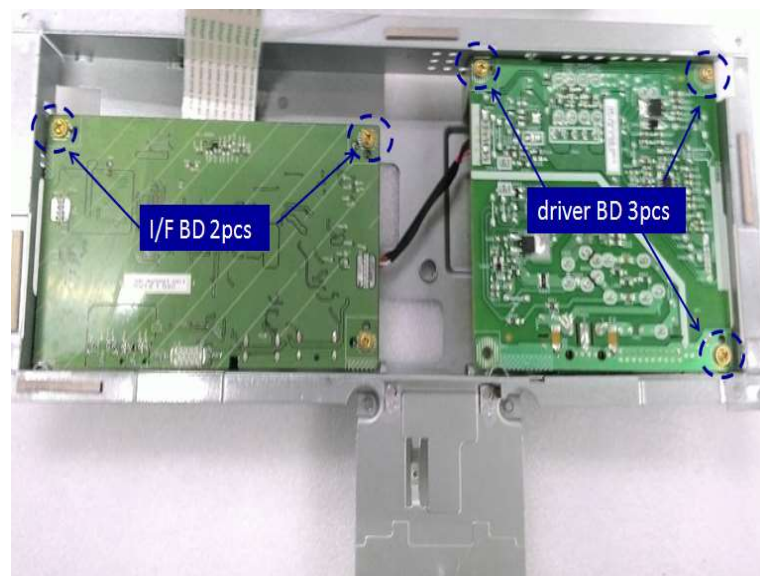
8. Disassemble Control BD



9. Disassemble Mylar & unscrew D-sub

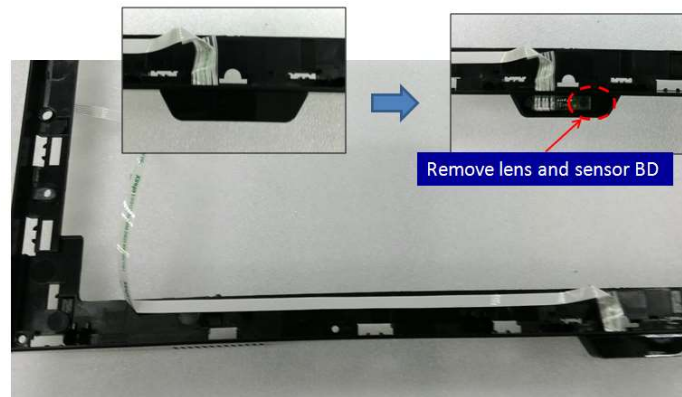


10. Disassemble PCBs





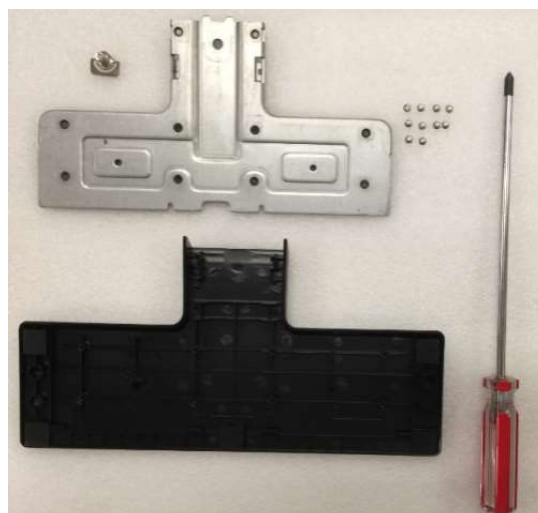
11. Disassemble Lens and sensor BD



12. Disassemble Column



13. Disassemble Base





Recycle characteristics

Recycle characteristics Part	No.
Reuse	-
Recycle	1~4, 6~10,12~13,15~16,19~26
WEEE annex II	5,11, 14, 17,18, P01~P05
Recovery	-
Disposal	

Disassembly Time

Total time: 30 minutes