



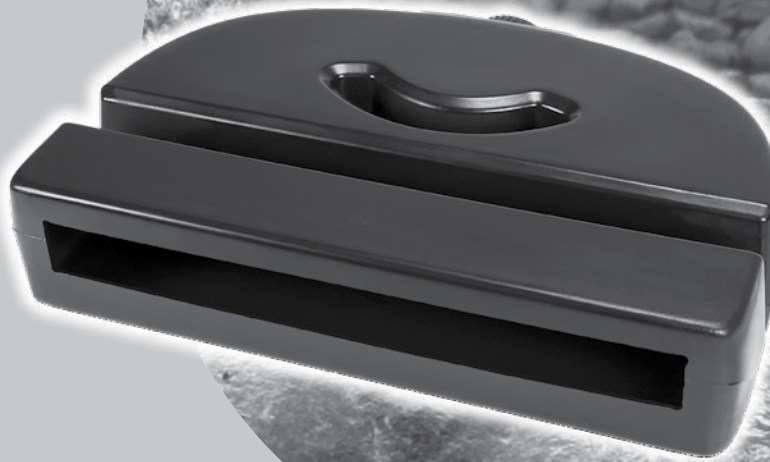
WATERFALL SPILLWAY

Waterfall Spillway 22"

Item #77000

Waterfall Spillway 12"

Item #77023



aquascapeinc.com



Waterfall Spillway

Thank you for choosing the Waterfall Spillway. At Aquascape, we connect people to water the way nature intended. Since 1991, we've been creating and field-testing water features in order to provide you with the most reliable products and best value in the water gardening industry.

The Aquascape Waterfall Spillway makes it easy to create a waterfall or stream, providing smooth, consistent, leak-free water flow. As the incoming water rushes in, the water is diffused by strategically positioned internal barriers to create a smooth flow of water. Its durable design allows boulders, gravel, soil, or other creative landscape material to be set directly on top, making it easy to camouflage into the surrounding landscape. This instruction manual will guide you through the proper installation procedures to ensure long-term enjoyment.



TABLE OF CONTENTS

Introduction	2
Contents	3
Installation	3
Replacement Parts	5
Warranty Information	5

☎ Contact Us

For more information about our company or products, please visit our website at aquascapeinc.com or call US (866) 877-6637 CAN (866) 766-3426.

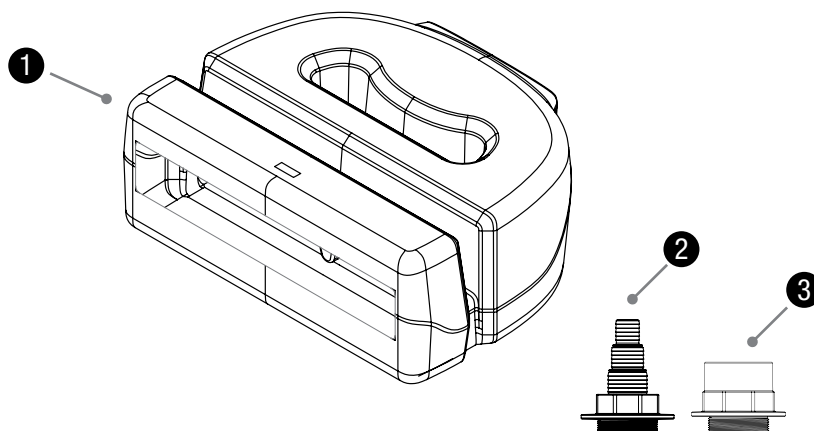
Find us on:



facebook.com/aquascapeinc
youtube.com/aquascape4
pinterest.com/aquascapeinc
instagram.com/aquascape_inc

Contents

No.	Description
1.	Waterfall Spillway
2.	2" MPT x Slip
3.	Multi-Hose Adapter 2"MPT x 1.5", 2" Barbed



Installation

STEP 1

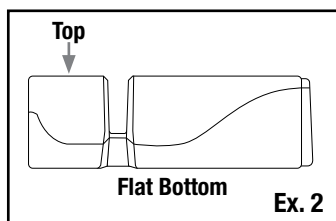
BUILD WATERFALL AND STREAM

- Build waterfall and stream, providing enough liner at the top of the waterfall to wrap over the top of the Waterfall Spillway.

STEP 2

PLACE WATERFALL SPILLWAY

- Set the Waterfall Spillway into the desired location (Ex. 1). Ensure the top of the spillway is facing upward (Ex. 2).



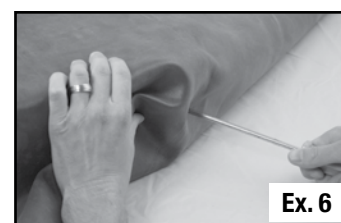
- Adjust the height of the Waterfall Spillway to match the starting point of the waterfall. A bed of gravel can be placed on top of the liner, beneath the Waterfall Spillway, to raise the height of the spillway to the desired level (Ex. 3).
- Level the spillway from side-to-side and tilted forward a 1/4" bubble on a 2 foot level (Ex. 4).



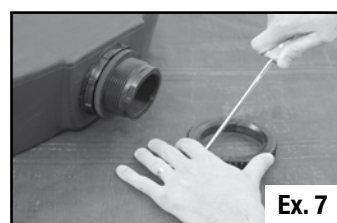
STEP 3

CONNECT TO LINER

- Fold the liner over the top of the Waterfall Spillway. It is recommended to provide some slack in the liner in case the position of the Waterfall Spillway needs minor adjustment during installation (Ex. 5).
- Using a screw driver or awl, puncture a small hole in the liner through the center of the Waterfall Spillway fitting (Ex. 6). This will be your reference point for the location of the liner connection.

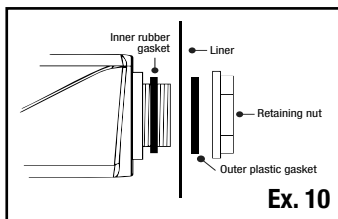


- Unfold the liner back off the Waterfall Spillway and remove the retaining nut from the Waterfall Spillway fitting. Center the retaining nut over the puncture hole in the liner. Use a pen marker, awl, or screwdriver to trace a line around the inside of the nut (Ex. 7).
- Remove the retaining nut and trim a hole in the liner approximately 1/8" inside of the score mark (Ex. 8).



- Remove the outer plastic gasket from the Waterfall Spillway fitting. The rubber gasket should remain on the Waterfall Spillway fitting. Insert the hole in the liner over the Waterfall Spillway fitting. The liner should fit snug around the base of the Waterfall Spillway fitting (Ex. 9).
- Place the plastic gasket onto the fitting (Ex. 10).

NOTE: The liner should be located between both of the gaskets.



- Place retaining nut on Waterfall Spillway and hand tighten. The fitting is reverse threaded, please refer to the arrow located on the retaining nut for proper direction. Use a pair channel locks to further tighten down the retaining nut and additional 1/4 to 1/2 turn past hand tight being careful to not over tighten retaining nut, which could possibly crack the plastic fitting (Ex. 11).



STEP 4

CONNECT THE PIPE

- Install the included pipe fitting into the back of the Waterfall Spillway. Use Teflon tape or silicone sealant (not included) on the threads of the fitting, in order to provide a water tight seal. Be careful to not over tighten pipe fitting, which could possibly crack the plastic fittings. The filter is now ready for the pipe to be installed (Ex. 12).



STEP 5

FILL JOINTS WITH BLACK WATERFALL FOAM

- The joints around the face of the Waterfall Spillway and surrounding waterfall stones can now be filled with Aquascape Pond and Waterfall Foam Sealant (Ex. 13).



NOTE: The waterfall can be operated once the foam is dry.

STEP 6

DISGUISE THE WATERFALL SPILLWAY

- Disguise the Waterfall Spillway using boulders, logs, gravel, soil, or other creative landscape materials (Ex. 14).



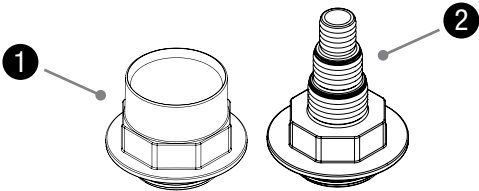
STEP 7

TRIM EXCESS LINER

- With the waterfall running, trim off any excess liner leaving several inches above the water level/water splash as a precaution. The remaining liner edges can be covered with gravel or other suitable landscape material.

Replacement Parts

Waterfall Spillway Replacement Parts	
No.	Description
1.	29158 – 2" MPT x Slip
2.	88023 – Multi-Hose Adapter 2"MPT x 1.5", 2" Barbed



Warranty

LIFETIME WARRANTY

Aquascape warrants that the Waterfall Spillway will be free of manufacturing defects for the lifetime of the product if properly installed and maintained. Proof of purchase required. Warranty does not cover damage resulting from negligent handling, misuse or lack of reasonable maintenance or care. This product should only be operated in fresh water without corrosive chemicals like chlorine or bromine. If upon Aquascape’s inspection, the Waterfall Spillway shows evidence of a manufacturing defect, Aquascape’s liability is limited, at Aquascape’s option, to the repair of the defect, replacement of the defective product, or refund of the original purchase price. The warranty excludes costs of labor, removal of product, shipping and expenses related to the installation and re-installation of the product. All products that include plumbing (tubing, pumps, check valves) need to be properly drained and winterized otherwise warranty is null and void. No liability for loss or damage of any nature or kind, whether arising out of or from the use of the product, whether defective or not defective, is assumed by Aquascape, Inc. or its affiliates. Aquascape shall not be liable for any incidental, consequential or other damages arising under any theory of law whatsoever.

For more information about our company or products, please visit our website at aquascapeinc.com
or call us at US (866) 877-6637 CAN (866) 766-3426

77004-#77000 #77023 • 12/06/22

©2022 Aquascape, Inc. • All Worldwide Rights Reserved