



EXPLORE THE
K380



CONNECT NOW!



MANAGING DEVICES



FEATURES



COMPATIBILITY



BACK TO
PRODUCT
(/EN-
IN/PRODUCT/MULTI-
DEVICE-
KEYBOARD-
K380)

EXPLORE THE K380

Enjoy the comfort and convenience of desktop typing on your desktop computer, laptop, smartphone, and tablet. The Logitech *Bluetooth*® Multi-Device Keyboard K380 is a compact and distinctive keyboard that lets you communicate and create on your personal devices, anywhere in the home.

Convenient Easy-Switch™ buttons make it easy to simultaneously connect with up to three devices via *Bluetooth*® wireless technology and instantly switch among them.

The OS-adaptive keyboard automatically re-maps keys for the selected device so you're always typing on a familiar keyboard with favorite hotkeys where you expect them.

Logitech
Options

In addition to optimizing the keyboard for your preferred operating system, the software lets you customize the K380 to fit your individual needs and personal style.

NOTE: Descriptions of features that require installation of Logitech Options™ are tagged with a blue badge.

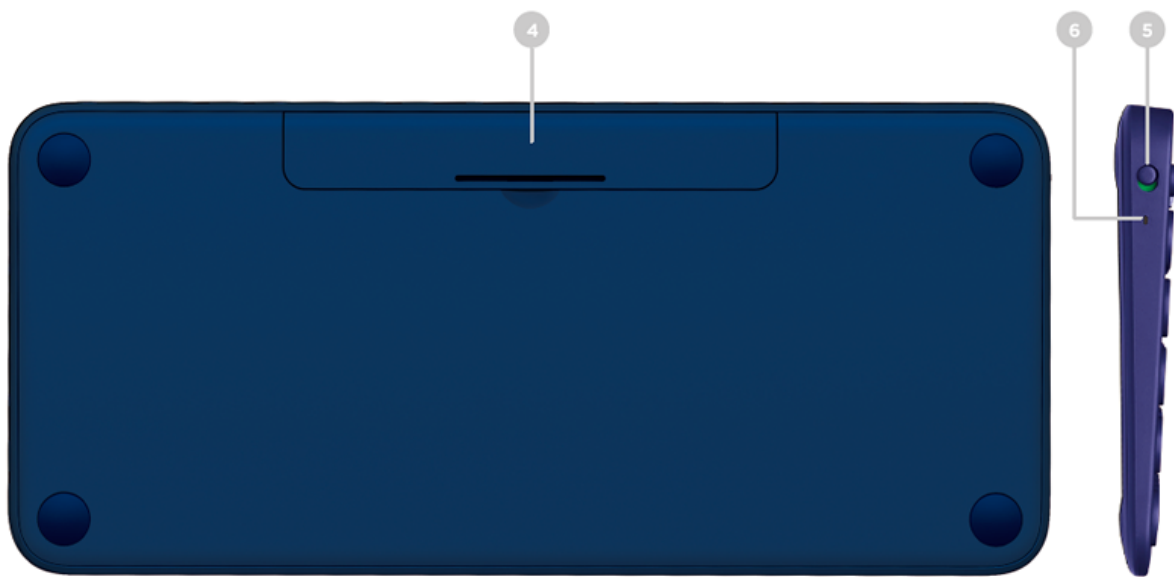
THE K380 AT A GLANCE



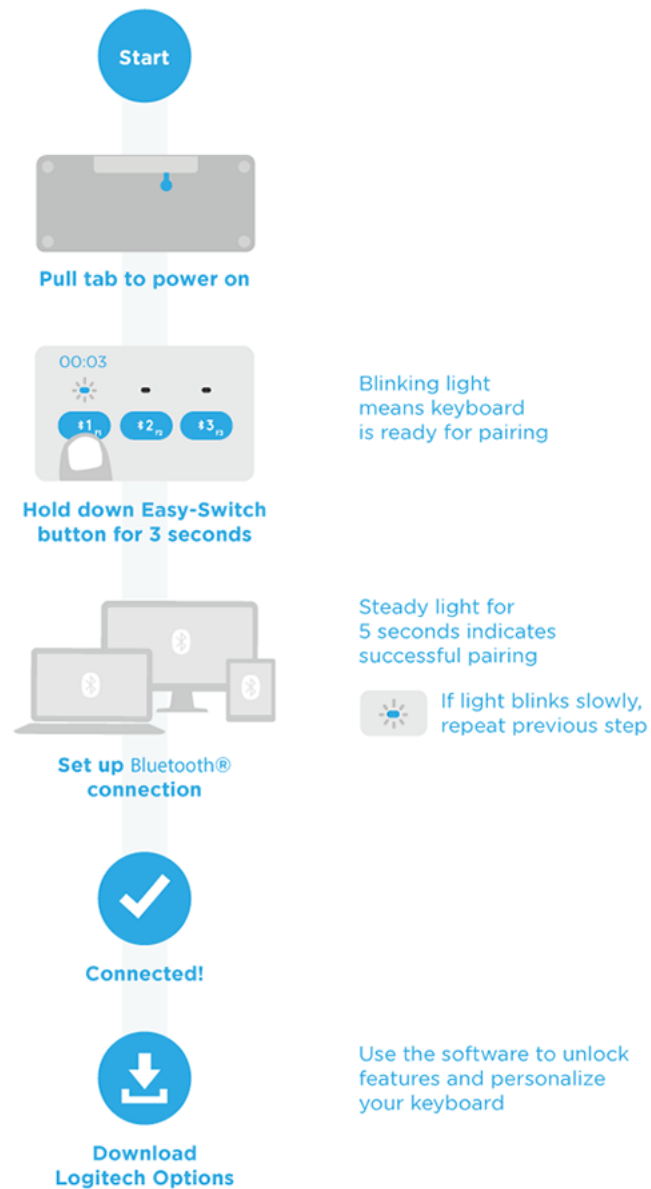
- | | | |
|---|--------------------------------|--|
| ① | Easy-Switch keys | Press to connect and select devices |
| ② | Bluetooth status lights | Show state of Bluetooth connection |
| ③ | 3 Split keys | Modifier based on type of device connected to keyboard Above: Windows® and |

Android™. Below:
Mac OS® X and
iOS®

- ④ **Battery
compartment**
- ⑤ **On/off switch**
- ⑥ **Battery
status light**



CONNECT NOW!



(<http://support.logitech.com/software/options>)

MANAGING DEVICES



Switching devices

After setting up connections with up to three devices, switch among them by pressing the Easy-Switch button.

When you press an Easy-Switch button, the button status light slowly blinks before turning solid for 5 seconds, confirming the selection.

Use the keyboard to type on the selected computer or mobile device.



Re-pairing a device

If a device becomes disconnected from the keyboard, you can easily re-pair the device with the K380.

On the keyboard

Press and hold down an Easy-Switch button until the status light starts blinking.

The keyboard is in pairing mode for the next three minutes.

On the device

Go to Bluetooth settings on your device and select **Logitech *Bluetooth*® Multi-Device Keyboard K380** when it appears in the list of available Bluetooth devices.

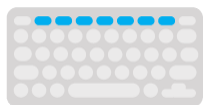
Follow the onscreen instructions to complete the pairing.

Upon pairing, the status LED on the keyboard stops blinking and remains steady for 10 seconds.

FEATURES

Explore the advanced features your new keyboard offers.

**Shortcuts and
function keys**



**OS-adaptive
keyboard**



**Power
management**



Logitech Options

Enhance your keyboard with Logitech Options

Unlock the hidden potential of your keyboard by adding Logitech Options software.

In addition to optimizing the K380 for your operating system, Logitech Options lets you customize the keyboard to fit your needs and personal style—create shortcuts, reassign key functions, enable (and disable) keys, display battery warnings, and much more.

Logitech Options is available for Windows (7, 8, or later) and Mac OS X (10.10 or later).

Install Logitech Options: Mac or Windows

Shortcuts and function keys

Hot keys and media keys

The table below shows hot keys and media keys available for Windows, Mac OS X, Android and iOS.

Logitech Options





If you typically use function keys more often than shortcut keys, install Logitech software and use it to set up shortcut keys as function keys and use the keys to perform functions without having to hold down the fn key.



OS-adaptive keyboard

The Logitech Keyboard K380 includes OS-adaptive keys that have different functions, depending on the operating system of the device you're typing on.

The keyboard automatically detects the operating system on the currently selected device and remaps keys to provide functions and shortcuts where you expect them to be.

To select an OS	Hold down key combination for 3 seconds
Mac OS X iOS	 + 
Windows Android Chrome	 + 

Manual selection

If the keyboard fails to correctly detect the operating system of a device, you can manually select the operating system by performing a long press (3 seconds) of a function key combination.

Reserved key labels



Gray
Reserved for use with
Apple computers
(Mac OS X) or iPhones
and iPads (iOS)

Example (Mac OS X or iOS)



White on gray circle
Symbol reserved for
use with Alt Gr on
computers running
Windows

Example (Windows)



Split key labels



Above: Windows and Android

Below: Mac OS X and iOS

Split line



Multi-function keys

Unique multi-function keys makes the Logitech Keyboard K380 compatible with most computers and mobile devices. Key label colors and split lines identify functions or symbols reserved for different devices and operating systems.

Key label color

Gray labels indicate functions available on Apple devices running Mac OS X or iOS. White labels on gray circles identify symbols reserved for use with **Alt Gr** on Windows computers.*

Split keys

Modifier keys on either side of the space bar display two sets of labels separated by split lines. The label above the split line shows the modifier sent to a Windows, Android, or Chrome device. The label below the split line shows the modifier sent to an Apple Macintosh, iPhone, or iPad. The keyboard automatically uses modifiers associated with the currently selected device.

*The Alt Gr (or Alt Graph) key that appears on many international keyboards replaces the right Alt key normally found to the right of the spacebar. When pressed in combination with other keys, Alt Gr enables entry of special characters.

Power management

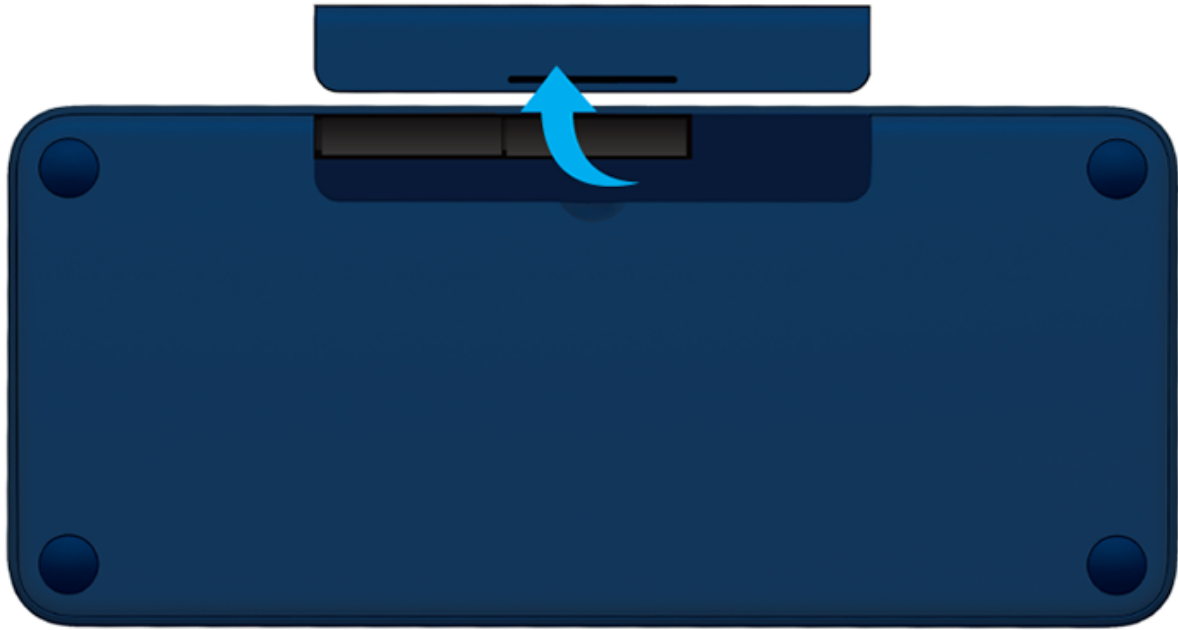
Check battery level

The status LED on the side of the keyboard turns red to indicate battery power is low and it's time to change batteries.

Replace batteries

Lift the battery compartment up and off the base.

Replace the spent batteries with two new AAA batteries and reattach the compartment door.



Logitech Options

Tip: Install Logitech Options to set up and receive battery status notifications.

COMPATIBILITY

BLUETOOTH WIRELESS TECHNOLOGY ENABLED DEVICES

Apple

Mac OS X (10.10 or later)

Windows

Windows 7, 8, 10 or later

Chrome OS

Chrome OS™

Android

Android 3.2 or later

© 2015 Logitech. Logitech, Logi, and other Logitech marks are owned by Logitech and may be registered. The Bluetooth® word mark and logos are registered trademarks owned by Bluetooth SIG, Inc. and any use of such marks by Logitech is under license. All other trademarks are the property of their respective owners.