



EDIFIER X5 Xemal X True Wireless Stereo Earbuds User Guide

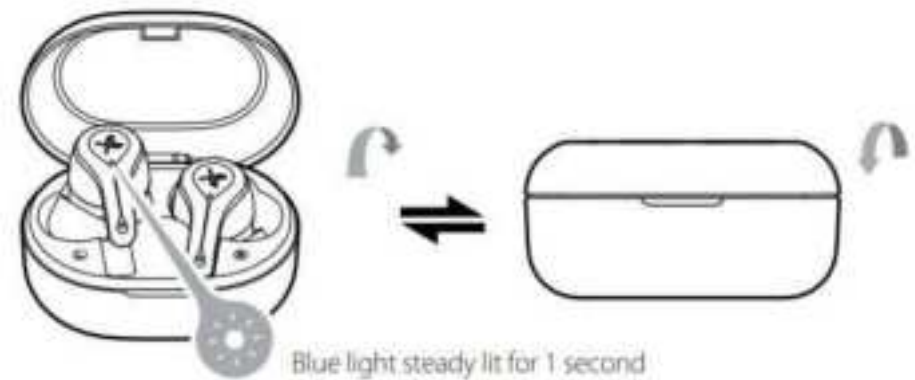
April 1, 2022April 3, 2022 [Leave a comment on EDIFIER X5 Xemal X True Wireless Stereo Earbuds User Guide](#)

[Home](#) » [Edifier](#) » EDIFIER X5 Xemal X True Wireless Stereo Earbuds User Guide 📄

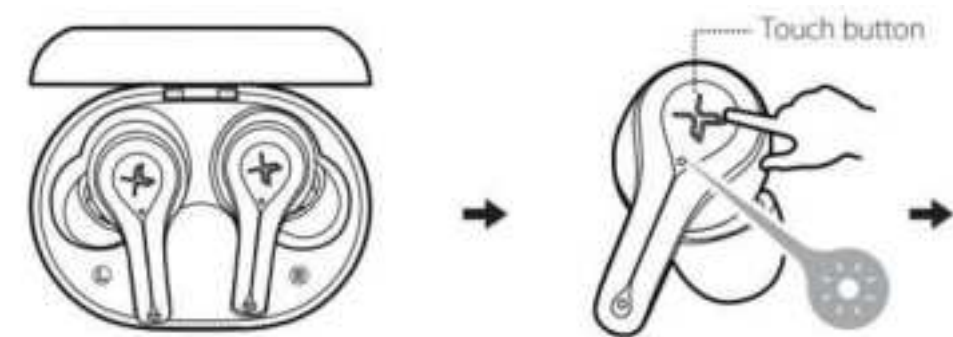


Please visit the EDIFIER website for the full version user manual: www.edifier.com

- Power on when taken out of the charging case.
- Power off when placed in the charging case.

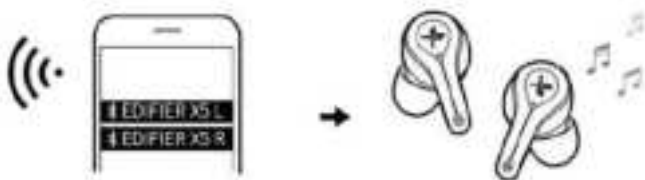


Pairing

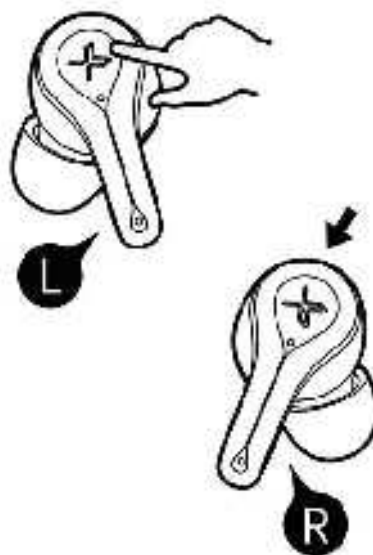


- Bluetooth pairing: press and hold the touch button for 3 seconds
 - TWS pairing: double click the touch button
 - Clear pairing records: press and hold the touch button for 8 seconds
- Input: 5V — 50mA (earbuds)

- Bluetooth pairing: red and blue lights flash rapidly
 - TWS pairing: blue light flashes rapidly
 - Clear pairing records: blue light flashes six times rapidly
- 5V — 500mA (charging case)



- For initial use, directly take the earbuds out of the charging case, and set the mobile phone to search for and connect to the corresponding Bluetooth pairing name as shown in the above picture; For subsequent use, the earbuds will automatically connect to the mobile phone connected last time.
- Tips: After pairing your mobile phone with one earbud, you can repeat the above steps to pair the mobile phone with the other earbud, then you can choose to use either earbud.



Functional operation (same operation for the left and right earbuds)



Accept/end a call: single-click the touch button



Decline a call: press and hold the touch button for around 2 seconds



Pause/Play: single-click the touch button



Previous track: triple-click the touch button



Next track: double click the touch button



Voice assistant: press and hold the touch button for around 2 seconds

Note: Images are for illustrative purposes only and may differ from the actual product.



- "To prevent possible hearing damage, do not listen to high volume levels for long periods."
- "Fully understand user manual before use."
- "Ensure your player is at low volume levels or power off before you leave."



Correct Disposal of this product. This marking indicates that this product should not be disposed of with another household disposal, recycle it responsibly to promote the sustainable reuse of material resources.

To return your used device, please use the return and collection systems or contact the retailer where the product was purchased. They can take this product for environmentally safe recycling.

WARNING!

- Danger of explosion if the battery is incorrectly replaced. Replace only with the same or equivalent type.
- A warning that batteries (battery pack or batteries installed) shall not be exposed to excessive heat such as sunshine, fire or the like.
- Never disassemble, hit with force, squeeze batteries or dispose of batteries in fire.

- Do not expose batteries to conductive materials, liquid, fire or heat.
- Do not let metal objects contact two battery poles. If the battery looks swollen, leaking, discolored, having an odor, or any abnormal appearance, stop using it.
- Do not use the battery after being immersed in water.
- Improper use of battery may lead to explosion or leakage, causing skin burn or other injuries; in the event of battery leakage, handle it with care and immediately dispose of the battery in a manner in compliance with applicable laws and regulations in your locality.
- The battery is subjected to the extremely low air pressure that may result in an explosion or the leakage of flammable liquid or gas.



The Bluetooth® word mark and logos are registered trademarks owned by Bluetooth SIG, Inc. and any use of such marks by EDIFIER is under license. Other trademarks and trade names are those of their respective owners.

Declaration for EU

Frequency Band: 2.402GHz ~ 2.480GHz

RF Power Output: ≤20 dBm (EIRP)



There is no restriction of use.

Qualcomm aptX is a product of Qualcomm Technologies, Inc. and/or its subsidiaries.

Qualcomm is a trademark of Qualcomm Incorporated, registered in the United States and other countries.

aptX is a trademark of Qualcomm Technologies International, Ltd., registered in the United States and other countries.

Warning!

- Please read the manual carefully. Keep it in a safe place for future reference.
- Use the product properly by following the instructions in the manual.
- Using the product in a 0-35°C environment is recommended.
- Supervise children under 14 when using the product, the product is not a toy.
- To reduce the risk of fire and electric shock, do not expose the product to rain or moisture.
- Do not use the product near any heat source (e.g. radiator, heater, stove, or other devices that generate heat).
- Consult local staff before using the product near medical or industrial equipment or onboard an aircraft.
- Never use strong acid, alkali, gasoline, alcohol, or other chemical solvents to clean the product surface. Use only neutral solvent or clear water for cleaning.
- To prevent possible hearing damage, do not listen at a high volume level for long periods. Therefore, always set the volume to an appropriate level.
- For traffic safety, do not use the product while driving, cycling, or crossing a road.

Edifier International Limited

P.O. Box 6264

General Post Office

Hong Kong

www.edifier.com

2020 Edifier International Limited. All rights reserved.

Printed in China

NOTICE:

For the need for technical improvement and system upgrade, the information contained herein may be subject to change from time to time without prior notice. Products of EDIFIER will be customized for different applications.

Pictures and illustrations shown in this manual may be slightly different from the actual product. If any difference is found, the actual product prevails. IB-200-X00050-00 V1.0



@EdifierGlobal



@Edifier_Global



@Edifier_Global

Contents [hide](#)

[1 Documents / Resources](#)

[1.1 References](#)

[1.2 Related Manuals / Resources](#)

Documents / Resources

EDIFIER | 漫步者

[EDIFIER X5 Xemal X True Wireless Stereo Earbuds](#) [pdf] User Guide

X5, Xemal X True Wireless Stereo Earbuds



References

- [IER | Solutions d'optimisation des flux des biens et des personnes](#)

Related Manuals / Resources



[EDIFIER X6 True Wireless Stereo Earbuds User Manual](#)

True Wireless Stereo Earbuds Please visit the EDIFIER website for the full version user manual: www.edifier.com Power on...



[EDIFIER EDF200060 X3s True Wireless Stereo Earbuds User Manual](#)

EDIFIER EDF200060 X3s True Wireless Stereo Earbuds User Manual Product description and accessories ...



[EDIFIER True Wireless Stereo Earbuds X3 User Guide](#)

EDIFIER True Wireless Stereo Earbuds X3 Product Description and Accessories Note: There are different size of ear...



[EDIFIER Hecate GM3 True Wireless Gaming Earbuds User Manual](#)

Hecate GM3 True Wireless Gaming Earbuds

Leave a comment

Your email address will not be published.

Comment

Name

Email

Website

☐ Save my name, email, and website in this browser for the next time I comment.

[Manuals+.](#)

- [home](#)
- [privacy](#)