



PRODUCT CATALOGUE – JULY 2023

ALVA

Just Add Vinyl



ALVA TT V2

Direct Drive Turntable with Bluetooth® aptX HD

ALVA TT V2

Direct Drive Turntable with Bluetooth® aptX HD



Just Add Vinyl

You've spent years curating the perfect record collection, searching for hidden gems in record shops and online – because you love music. Our shared love means that we didn't stop with Alva TT.

We pushed on to create Alva TT V2; with a direct drive system, bespoke MC cartridge, an all-new tone-arm, and Hi-Res Bluetooth with an integrated phono stage – both now switchable.

We believe that your records deserve to sound as fantastic as they look.

Highlights

- **Bluetooth aptX HD** – Switchable Hi-Res wireless streaming. Place the turntable on a flat surface that suits you.
- **Built-In Phono Stage** – Switchable phono pre-amp, direct connection to amp – keep your setup simple.
- **Direct Drive** – Consistent drive speed with pitch-perfect audio reproduction.
- **Pre-installed High-Output MC Cartridge** – Pristine musical detail, custom design. Easy setup.
- **New Tonearm with Removable Headshell** – Lightweight and strong. Tracks your records flawlessly.

Specification

TYPE	Direct Drive
TURNTABLE SPEEDS	33.3, 45rpm
WOW & FLUTTER	<0.1%
TURNTABLE PLATTER	POM (Polyoxymethylene)
PLATTER DIAMETER	305mm
PLATTER WEIGHT	2.2kg
AUDIO OUT	RCA Phono/Line Level (Switchable)
BLUETOOTH	SBC/aptX/aptX HD
POWER SUPPLY	AC 100-240V, 60/50Hz
POWER CONSUMPTION	5.5W
MAX POWER CONSUMPTION	20W
STANDBY POWER CONSUMPTION	<0.25W
DIMENSIONS (W X H X D)	435 x 139 x 368mm
WEIGHT	10.9kg
PHONO STAGE GAIN @1KHZ	42dB
PHONO STAGE NOMINAL OUTPUT	250Vrms
PHONO STAGE INPUT NOISE (A-WEIGHTED)	0.1u Vrms
PHONO STAGE RIAA CURVE ACCURACY	*+/- 0.3dB 30Hz-20kHz
PHONO STAGE SIGNAL/NOISE RATIO	>90dB
PHONO STAGE THD+N 1KHZ	0.0025%
PHONO STAGE INPUT IMPEDANCE	47kΩ
PHONO STAGE INPUT CAPACITANCE	330pF
TONEARM TYPE	Static Balanced Tonearm w/ detachable Headshell
TONEARM EFFECTIVE LENGTH	221.5mm
TONEARM OVERHANG	19mm
TONEARM EFFECTIVE MASS	19.6g
TONEARM COMPATIBLE CARTRIDGE WEIGHTS	4.5-12g
CARTRIDGE	High Output Moving Coil
CARTRIDGE FREQUENCY RESPONSE	*+/- 1dB 30Hz-20kHz
CARTRIDGE STYLUS	Elliptical
CARTRIDGE CANTILEVER	Aluminium
CARTRIDGE OUTPUT LEVEL	2mV @1kHz
CARTRIDGE TRACKING FORCE	2g
CARTRIDGE RECOMMENDED LOAD	47kΩ
IN THE BOX	ALVA TT V2 direct drive turntable, Dust cover, Quick start guide, 2 x hinge assembly, Ortofon stylus gauge, Counterweight, Removable headshell with moving-coil cartridge, POM platter assembly, Region specific mains leads, RCA cable, Safety guide, Ground lead.



ALVA ST

Belt Drive Turntable with Bluetooth® aptX HD

ALVA ST

Belt Drive Turntable with Bluetooth® aptX HD



Just Add Vinyl

There's nothing quite like vinyl: the tactile pleasure of removing a record from its sleeve and carefully placing it on a deck is unique. We designed the original Alva TT to honour that tradition, and Alva ST to share that pleasure with more people.

With a pre-fitted cartridge – so you'll be playing records in minutes – the belt-drive Alva ST also features switchable Hi-Res Bluetooth streaming and integrated phono stage.

Everyone should be able to enjoy the freedom Alva brings.

Highlights

- **Bluetooth aptX HD** – Switchable Hi-Res wireless streaming. Place the turntable on a flat surface that suits you.
- **Built-In Phono Stage** – Switchable phono pre-amp, direct connection to amp – keep your setup simple.
- **Belt Drive** – With simple electronic push button speed control.
- **Pre-installed Moving Magnet Cartridge** – A well-regarded choice, play records in minutes..
- **New Tonearm with Removable Headshell** – Lightweight and strong. Tracks your records flawlessly.

Specification

TYPE	Belt Drive
TURNTABLE SPEEDS	33.3, 45rpm
WOW & FLUTTER	<0.12%
TURNTABLE PLATTER	Die Cast Aluminium
PLATTER DIAMETER	305mm
PLATTER WEIGHT	645.3g (930.5g inc. rubber mat)
AUDIO OUT	RCA Phono/Line Level (Switchable)
BLUETOOTH	SBC/aptX/aptX HD
POWER SUPPLY	DC 12V
POWER CONSUMPTION	6W
MAX POWER CONSUMPTION	20W
STANDBY POWER CONSUMPTION	<0.3W
DIMENSIONS (W X H X D)	435 x 139 x 366.7mm
WEIGHT	9kg
PHONO STAGE GAIN @1KHZ	42dB
PHONO STAGE NOMINAL OUTPUT	250Vrms
PHONO STAGE INPUT NOISE (A-WEIGHTED)	0.1u Vrms
PHONO STAGE RIAA CURVE ACCURACY	*+/- 0.3dB 30Hz-20kHz
PHONO STAGE SIGNAL/NOISE RATIO	>90dB
PHONO STAGE THD+N 1KHZ	0.0025%
PHONO STAGE INPUT IMPEDANCE	47kΩ
PHONO STAGE INPUT CAPACITANCE	330pF
TONEARM TYPE	Static Balanced Tonearm w/ detachable Headshell
TONEARM EFFECTIVE LENGTH	221.5mm
TONEARM OVERHANG	19mm
TONEARM EFFECTIVE MASS	19.6g
TONEARM COMPATIBLE CARTRIDGE WEIGHTS	4.5-12g
CARTRIDGE	Moving Magnet
CARTRIDGE FREQUENCY RESPONSE	+/- 0.5dB 30Hz-20kHz
CARTRIDGE STYLUS	Elliptical
CARTRIDGE CANTILEVER	Alloy Tube
CARTRIDGE OUTPUT LEVEL	1.8~3.6mV @1kHz
CARTRIDGE TRACKING FORCE	2g
CARTRIDGE RECOMMENDED LOAD	47kΩ
IN THE BOX	Alva ST Belt-drive turntable, Dustcover, Quick start guide, 2x hinge assembly, Platter, Counterweight, Slipmat, Removable headshell with moving magnet cartridge, power adaptor with switchable plugs, RCA cable, Ground lead, Ortofon stylus gauge.



ALVA DUO

Moving Coil & Moving Magnet Phono Preamp

ALVA Duo

Moving Coil & Moving Magnet Phono Preamp



Vinyl as it's Supposed to Sound

Squeeze every inch of detail from your record collection with our highest quality moving magnet and moving coil phono stage, with integrated headphone amp; the Duo Phono Preamplifier.

Whether you're dusting off your record collection or embracing analogue through the vinyl revival, there's a unique experience to be had from the moment you drop the needle on your favourite album.

To preserve the unique warmth of the vinyl sound, the Duo phono preamplifier has been carefully designed with a state-of-the-art switch mode power supply and a new surface mounted circuit board layout to reduce unwanted noise.

Highlights

- **Switch Mode Power Supply** – Reduces hum.
- **Balance Control** – Compensate for older cartridge imbalance.
- **Subsonic Filter** – Eliminates low frequency rumble.
- **6.35mm HeadphoneSocket** – For private listening sessions.

Specification

MAX POWER CONSUMPTION	10W
CARTRIDGE SUPPORT	Moving Magnet Moving Coil
GAIN @ 1KHZ	MM: 39dB MC: 60dB
NOMINAL OUTPUT	300mV
SENSITIVITY FOR NOMINAL OUTPUT	MM: 3.35mV MC: 305uV
EQUIVALENT INPUT NOISE (A-WEIGHTED)	MM: ~0.09uV MC: ~0.08uV
RIAA CURVE ACCURACY	+/- 0.3dB 30Hz-20kHz
SIGNAL TO NOISE RATIO GROUNDED INPUTS REF. TV OUTPUT (20HZ-20KHZ BW)	MM: >90dB MC: >70dB
THD+N 1KHZ (20-20KHZ BW)	MM: <0.0025% MC: <0.20%
INPUT IMPEDANCE	MM: 47k Ohms MC: 100 Ohms
INPUT CAPACITANCE	100pF
OVERLOAD MARGIN	>30dB
CROSSTALK @ 10KHZ	MM: >85dB MC: 75dB
DIMENSIONS (W X H X D)	215 x 48 x 159 mm (8.5 x 1.9 x 6.2")
WEIGHT	0.95kg (2.1lbs)
IN THE BOX	Alva Duo Moving Coil & Moving Magnet Phono Preamp, User Manual, Safety Guide, Mains Lead



ALVA SOLO
Moving Magnet Phono Preamplifier

ALVA Solo

Moving Magnet Phono Preamplifier



Vinyl as it's Supposed to Sound

Enjoy every last detail from your vinyl collection with our highest quality moving magnet phono stage, the Solo Phono Preamplifier.

Whether you're dusting off your record collection or embracing analogue through the vinyl revival, there's a unique experience to be had from the moment you drop the needle on your favourite album.

To preserve the unique warmth of the vinyl sound, the Solo phono preamplifier has been carefully designed with a state-of-the-art switch mode power supply and a new surface mounted circuit board layout to reduce unwanted noise.

Highlights

- **Switch Mode Power Supply** – Reduces hum.
- **Balance Control** – Compensate for older cartridge imbalance.
- **Subsonic Filter** – Eliminates low frequency rumble.

Specification

MAX POWER CONSUMPTION	10W
CARTRIDGE SUPPORT	Moving Magnet
GAIN @ 1KHZ	39dB
NOMINAL OUTPUT	300mV
SENSITIVITY FOR NOMINAL OUTPUT	3.35mV
EQUIVALENT INPUT NOISE (A-WEIGHTED)	~0.09uV
RIAA CURVE ACCURACY	+/- 0.65dB 30Hz-20kHz
SIGNAL TO NOISE RATIO GROUNDED INPUTS REF. TV OUTPUT (20HZ-20KHZ BW)	>90dB
THD+N 1KHZ (20-20KHZ BW)	<0.0025%
INPUT IMPEDANCE	47k Ohms
INPUT CAPACITANCE	100pF
OVERLOAD MARGIN	>30dB
CROSSTALK @ 10KHZ	>85dB
DIMENSIONS (W X H X D)	176 x 48 x 132 mm (6.9 x 1.9 x 5.2")
WEIGHT	0.68kg (1.5lbs)
IN THE BOX	Alva Solo Moving Magnet Phono Preamplifier, User Manual, Safety Guide, Mains lead



ALVA MC
High-Output Moving Coil Cartridge

ALVA MC

High-Output Moving Coil Cartridge



Specification

CARTRIDGE TYPE	High-output Moving Coil
FREQUENCY RESPONSE	+/- 1dB 30Hz-20kHz
STYLUS	Elliptical
CANTILEVER	Aluminium
OUTPUT LEVEL	2mV @1kHz
TRACKING FORCE	2g
RECOMMENDED LOAD	47kΩ
WEIGHT	7g
SEPARATION	25dB @ 1kHz
TRACKABILITY	70um/2gr

Vinyl as it's Supposed to Sound

With its exposed cantilever design and elliptical stylus, our engineers custom-designed Alva MC, a high-output Moving Coil cartridge for Alva TT to deliver stunning levels of musical detail.

The 68° angled cantilever is a call-back to our founding year of 1968 and a celebration of over 50 years of innovation.

Highlights

- **High-Output Moving Coil** – For outstanding musical detail
- **Exposed Cantilever Design** – Reduces unwanted resonance and vibration.
- **Elliptical Stylus** – Improved frequency response and lower distortion.
- **Designed and Engineered in the UK** – Bespoke Cambridge Audio design.

AX SERIES
Sound Comes First



AXA25
Integrated Stereo Amplifier

AXA25

Integrated Stereo Amplifier



Sound Comes First

AXA25 is an integrated amplifier built in a classic, fuss-free style.

Its slim symmetrical design offers great value and functionality for those looking for a straight-forward solution.

A 3.5mm aux input on the front face makes connecting compatible devices a doddle. While four pairs of analogue RCA inputs on the rear mean AXA25's pretty versatile too.

Highlights

- **25 Watts Power per Channel** – performance at all volumes, ideal for smaller rooms
- **Slim Timeless Design** – classic hi-fi width, with Lunar Grey aluminium trim
- **Tone & Balance Controls** – fine-tune sound to compensate for room dynamics
- **Front Aux Input** – 3.5mm socket to easily connect compatible devices

Specification

POWER OUTPUT	25 Watts (into 8 Ohms)
THD (UNWEIGHTED)	<0.015% @ 1kHz, 80% of rated power <0.15% 20Hz – 20kHz, 80% of rated power <0.1% 20Hz – 20kHz @ 10W
FREQUENCY RESPONSE (-3DB)	(-3dB) 10Hz - 30kHz
S/N RATIO (REF 1W)	>82dB (unweighted)
INPUT IMPEDANCES	32k ohms
POWER AMP DAMPING FACTOR	>100
MAX. POWER CONSUMPTION	180W
BASS/TREBLE CONTROLS	Shelving, ultimate boost/cut +/- 5.5dB @ 20Hz and 20kHz
STANDBY POWER CONSUMPTION	<0.5W
INPUTS	4x RCA, 1 x 3.5mm Aux input (front panel)
OUTPUTS	Speakers, Rec Out, USB 5V power
DIMENSIONS (WXHxD)	430 x 83 x 340mm (16.9 x 3.3 x 13.4")
WEIGHT	5.1kg (11.2lbs)
IN THE BOX	AXA25 Integrated Amplifier, Power Cable



AXA35

Integrated Stereo Amplifier with (Built-in) Phono-Stage

AXA35

Integrated Stereo Amplifier with (Built-in) Phono-Stage



Sound Comes First

Our AXA35 integrated amp offers 35 watts per channel and has a built-in moving magnet phono stage – perfect for vinyl enthusiasts.

A white LED dot matrix display confirms listening source, and separate tone controls mean you can adjust the sound to suit your taste.

There's a large ¼" (6.35mm) headphone socket too, ideal for high-quality listening without disturbing those who might not share your great taste in music.

Highlights

- **35 Watts Power per Channel** – for detailed performance at all volumes
- **Built-In Phono Stage** – to plug & play a vinyl turntable
- **Slim Timeless Design** – classic hi-fi size, with Lunar Grey aluminium trim
- **Tone Controls** – fine-tune sound to compensate for room dynamics
- **Digital Display** – white LED, clearly shows; source, volume & menus
- **Headphone Socket** – full size socket for high-quality after-hours listening
- **Front Aux Input** – 3.5mm socket to easily connect compatible devices

Specification

POWER OUTPUT	35 Watts (into 8 Ohms)
THD (UNWEIGHTED)	<0.01% @ 1kHz, 80% of rated power <0.15% 20Hz – 20kHz, 80% of rated power
FREQUENCY RESPONSE (-3DB)	5Hz - 50kHz
S/N RATIO (REF 1W)	>82dB (unweighted)
INPUT IMPEDANCES	47k ohms
POWER AMP DAMPING FACTOR	>50
MAX. POWER CONSUMPTION	260W
BASS/TREBLE CONTROLS	Shelving, ultimate boost/cut +/- 10dB @ 100Hz and 10kHz
STANDBY POWER CONSUMPTION	<0.5W
INPUTS	4x RCA, 1x Phono, 1 x 3.5mm Aux input (front panel)
OUTPUTS	Speakers, Rec Out, USB 5V power
DIMENSIONS (WXHxD)	430 x 83 x 335mm (16.9 x 3.3 x 13.2")
WEIGHT	5.6kg (12.3lbs)
IN THE BOX	AXA35 Integrated Amplifier, Power Cable, Remote Control, 2 x AAA Batteries



AXC25
CD Player

AXC25
CD Player



CD Sound Comes First

AXC25 is an elegant, gapless playback CD player featuring a high-quality digital to analogue converter (DAC).

The integrated Wolfson DAC helps accurately retrieve digital information from your discs, to be output to your chosen amplifier – helping to breathe new life into your CD collection.

The slim, standard hi-fi component width, player will slip unobtrusively into an existing setup.

Highlights

- **Gapless Playback** – ideal for classical pieces, live albums & DJ mixes
- **High-Quality Wolfson DAC** – ensures the digital information from the disc is retrieved accurately
- **Slim elegant design** – classic hi-fi design, floating effect wedge front foot, lunar grey finish
- **Digital display** – classy white LED, clear visible information

Specification

THD @ 1KHZ -10DBFS	<0.015%
D/A CONVERTOR	Wolfson Microelectronics WM8524
GAPLESS PLAYBACK	Yes
FILTER	2 -pole Butterworth filter
FREQUENCY RESPONSE (+/-0.4DB)	20Hz - 20kHz
THD @ 1KHZ 0DBFS	<0.006%
S/N RATIO, A WEIGHTED	>93dB
CROSSTALK @1KHZ	<-95dB
CROSSTALK @20KHZ	<-95dB
OUTPUT IMPEDANCE	<50ohms
MAXIMUM POWER CONSUMPTION	15W
STANDBY POWER CONSUMPTION	<0.5W
DIMENSIONS (W X H X D)	430 x 75 x 305mm (16.9 x 3.0 x 12.2")
WEIGHT	4.3kg (9.5lbs)
IN THE BOX	AXC25 CD Player, Power Cable, Remote Control, 2 x AAA Batteries



AXC35
CD Player

AXC35
CD Player



CD Sound Comes First

AXC35 is an elegant, gapless playback CD player featuring a high-quality digital to analogue converter (DAC).

The integrated Wolfson DAC helps accurately retrieve digital information from your discs, to be output to your chosen amplifier – helping to breathe new life into your CD collection.

A digital coax out gives you alternative output options.

Highlights

- **Gapless Playback** – ideal for classical pieces, live albums & DJ mixes
- **High-Quality Wolfson DAC** – ensures the digital information from the disc is retrieved accurately
- **Digital Coax Out** – for pure digital connection to compatible amps
- **Slim elegant design** – classic hi-fi design, floating effect wedge front foot, lunar grey finish
- **Digital display** – classy white LED, clear visible information

Specification

THD @ 1KHZ -10DBFS	<0.01%
D/A CONVERTOR	Wolfson Microelectronics WM8524
GAPLESS PLAYBACK	Yes
FILTER	2 -pole Butterworth filter
FREQUENCY RESPONSE (+/-0.4DB)	20Hz - 20kHz
THD @ 1KHZ 0DBFS	<0.006%
S/N RATIO, A WEIGHTED	>95dB
CROSSTALK @1KHZ	<-98dB
CROSSTALK @20KHZ	<-95dB
OUTPUT IMPEDANCE	<50ohms
S/PDIF OUTPUT IMPEDANCE	<75ohms
MAXIMUM POWER CONSUMPTION	15W
STANDBY POWER CONSUMPTION	<0.5W
DIMENSIONS (W X H X D)	430 x 75 x 305mm (16.9 x 3.0 x 12.2")
WEIGHT	4.3kg (9.5lbs)
IN THE BOX	AXC35 CD Player, Power Cable, Remote Control, 2 x AAA Batteries, Safety Guide



AXN10
Network Player



Choice Comes First

Our new AXN10 network player can breathe new life into your system – opening up the world of Hi-Res music for you.

It slots seamlessly into an AX system, taking you beyond your prized collection of discs. There are stacks of free services, like internet radio, as well as the well-known premium ones – many offer free trials.

Thanks to our streaming know-how, you'll be able to enjoy high-quality music easily from a variety of sources via our app.

Highlights

- **StreamMagic Gen 4 Module** – swift playback & high quality sound
- **ESS SABRE ES9033Q DAC** – for the latest streaming capabilities
- **High-quality Internet Radio** – thanks to MPEG-DASH support
- **Spotify Connect, TIDAL & Qobuz built in** – for the best possible sound
- **Roon Ready** – easy browsing of your digital music
- **Connectivity Choice** – with USB playback, RCA/phono, coax & optical or wirelessly with Chromecast built-in, AirPlay 2 & Bluetooth 5

Specification

INPUTS	Ethernet, USB socket (mass storage), Wi-Fi, Bluetooth
OUTPUTS	Line out (unbalanced), Digital out (Coax and Optical)
DAC	ESS Sabre ES9033Q
FREQUENCY RESPONSE	20Hz – 70kHz +0/-1dB
ETHERNET	IEEE 802.3 10 Base-T or 100 Base-T
WI-FI	Wi-Fi 5 dual band 2.4/5GHz
BLUETOOTH	5.0 A2DP/AVRCP supporting SBC and AAC
COMPATIBILITY	UPnP, Local USB media, Internet Radio, Chromecast, Spotify connect, Tidal, Qobuz, Roon Ready, Airplay 2
AUDIO FORMATS	ALAC, WAV, FLAC, AIFF, DSD (x512), WMA, MP3, AAC, HE AAC, AAC+, OGG Vorbis
HI-RES SUPPORT	Up to 768KHz 32bit PCM, up to DSD512
MAXIMUM POWER CONSUMPTION	20W
STANDBY POWER CONSUMPTION	<0.5W
DIMENSIONS (W X H X D)	430 x 75 x 305mm (16.9 x 3.0 x 12.2")
WEIGHT	3.3kg (7.3lbs)



AXR85
FM/AM Stereo Receiver with Phono-Stage

AXR85

FM/AM Stereo Receiver with Phono-Stage



Convenient Sound Comes First

With 85 watts of power and an FM/AM tuner at its disposal, AXR85 is a receiver to be reckoned with.

A built-in phono stage for easy connection of a turntable, and Bluetooth to play music wirelessly from a smartphone.

A dedicated subwoofer output for driving bass, and two sets of speaker outputs add to AXR85's capabilities. While plenty of sockets front and rear build on that convenience.

Highlights

- **85 Watts per channel** – perfect for driving different sizes of speakers, ideal for medium rooms
- **Integrated FM/AM Tuner** – with RDS & 15 station presets
- **Built-in MM Phono Stage** – plug & play a turntable, no other boxes required
- **Built-in Bluetooth 5.0** – easy wireless connection to smartphones etc.
- **Slim elegant design** – classic hi-fi design with stylish white LED display
- **Analogue Inputs** – plenty of rear connectors for audio sources
- **Full-size headphonejack & Aux-In** – on front panel for convenience

Specification

POWER OUTPUT	85 watts (into 8Ω)
THD (UNWEIGHTED)	<0.01% @ 1kHz, 80% of rated power <0.15% 20Hz - 20kHz, 80% of rated power
FREQUENCY RESPONSE (-1DB)	5Hz - 50kHz
S/N RATIO (REF 1W)	>82dB (unweighted)
INPUT IMPEDANCES	47k ohms
POWER AMP DAMPING FACTOR	>50
STANDBY POWER CONSUMPTION	<0.5W
MAX. POWER CONSUMPTION	500W
BASS/TREBLE CONTROLS	Shelving, ultimate boost/cut +/- 10dB @ 100Hz and 20kHz
SUBWOOFER OUTPUT	200Hz 2nd order L+R Level follows volume setting
DIMENSIONS (W X H X D)	430 x 110 x 340 mm (16.9 x 4.3 x 13.4")
WEIGHT	8.1kg (17.8lbs)
BLUETOOTH	5.0 A2DP/AVRCP supporting SBC
TUNER BANDS	European AM (522-1629kHz) FM (87.5-108MHz) / US AM (530-1710kHz) FM (87.5-108MHz)
AERIAL INPUTS	FM 75 ohms, Coaxial. AM 300 ohms wire loop/ single wire
SIGNAL TO NOISE (TUNER)	60dB typical (FM)
DISTORTION (TUNER)	<0.4% @ 1kHz 50kHz deviation (FM mono) <0.6% @ 1kHz 50kHz deviation (FM stereo)
IN THE BOX	AXR85 Stereo Receiver, Power Cable, Remote Control, 2 x AAA Batteries, FM antenna, AM antenna



AXR100
FM Stereo Receiver with Phono-Stage

AXR100

FM Stereo Receiver with Phono-Stage



Versatile **Sound Comes First**

With 100 watts of power and FM/AM tuner too, AXR100 is an amp to be taken seriously – thanks to an integrated phono stage for easy connection of a turntable, and Bluetooth to play music wirelessly from a smartphone.

Dedicated subwoofer output for driving bass, and two sets of speaker outputs add to R100's appeal. While plenty of sockets front and rear build on that versatility.

Highlights

- **100 Watts per channel** – perfect for driving different sizes of speakers including floorstanders
- **Integrated FM/AM Tuner** – with RDS & 40 station presets
- **Built-in MM Phono Stage** – plug & play a turntable, no other boxes required
- **Built-in Bluetooth 5.0** – easy wireless connection to smartphones etc.
- **Slim elegant design** – classic hi-fi design with stylish white LED display
- **Digital & Analogue Inputs** – plenty of rear connectors for audio sources
- **Full-size headphonejack & Aux-In** – on front panel for convenience

Specification

POWER OUTPUT	100 watts (into 8Ω)
THD (UNWEIGHTED)	<0.01% @ 1kHz, 80% of rated power <0.15% 20Hz - 20kHz, 80% of rated power
FREQUENCY RESPONSE (-1DB)	5Hz - 50kHz
S/N RATIO (REF 1W)	>82dB (unweighted)
INPUT IMPEDANCES	47k ohms
POWER AMP DAMPING FACTOR	>50
STANDBY POWER CONSUMPTION	<0.5W
MAX. POWER CONSUMPTION	550W
BASS/TREBLE CONTROLS	Shelving, ultimate boost/cut +/- 10dB @ 100Hz and 20kHz
SUBWOOFER OUTPUT	200Hz 2nd order L+R Level follows volume setting
DIGITAL INPUTS	PCM 16-24bit, S/P DIF Co-axial 32-192kHz, TOSlink Optical 32-192kHz
DIMENSIONS (W X H X D)	430 x 110 x 340 mm (16.9 x 4.3 x 13.4")
WEIGHT	8.1kg (17.8lbs)
BLUETOOTH	5.0 A2DP/AVRCP supporting SBC
TUNER BANDS	European AM (522-1629kHz) FM (87.5-108MHz) / AM (540 - 1700kHz) FM (88 - 108MHz)
AERIAL INPUTS	FM 75 ohms, Coaxial. AM 300 ohms wire loop/ single wire
SIGNAL TO NOISE (TUNER)	60dB typical (FM)
DISTORTION (TUNER)	<0.4% @ 1kHz 50kHz deviation (FM mono) <0.6% @ 1kHz 50kHz deviation (FM stereo)
IN THE BOX	AXR100 Stereo Receiver, Power Cable, Remote Control, 2 x AAA Batteries, FM/DAB antenna



AXR100D

DAB+ / FM Stereo Receiver with Phono-Stage

AXR100D

DAB+ / FM Stereo Receiver with Phono-Stage



Digital Radio Sound Comes First

With 100 watts of power and DAB+ / FM tuner too, AXR100D is an amp to be taken seriously – thanks to an integrated phono stage for easy connection of a turntable, and Bluetooth to play music wirelessly from a smartphone.

A dedicated subwoofer output for driving bass, and two sets of speaker outputs add to R100D's appeal, while plenty of sockets front and rear build on that versatility.

Highlights

- **100 Watts per channel** – perfect for driving different sizes of speakers including floorstanders
- **Integrated DAB+ / FM Tuner** – with RDS & 40 station presets
- **Built-in MM Phono Stage** – plug & play a turntable, no other boxes required
- **Built-in Bluetooth 5.0** – easy wireless connection to smartphones etc.
- **Slim elegant design** – classic hi-fi design with stylish white LED display
- **Digital & Analogue Inputs** – plenty of rear connectors for audio sources
- **Full-size headphonejack & Aux-In** – on front panel for convenience

Specification

POWER OUTPUT	100 watts (into 8Ω)
THD (UNWEIGHTED)	<0.01% @ 1kHz, 80% of rated power <0.15% 20Hz - 20kHz, 80% of rated power
FREQUENCY RESPONSE (-1DB)	5Hz - 50kHz
S/N RATIO (REF 1W)	>82dB (unweighted)
INPUT IMPEDANCES	47k ohms
POWER AMP DAMPING FACTOR	>50
STANDBY POWER CONSUMPTION	<0.5W
MAX. POWER CONSUMPTION	550W
BASS/TREBLE CONTROLS	Shelving, ultimate boost/cut +/- 10dB @ 100Hz and 20kHz
SUBWOOFER OUTPUT	200Hz 2nd order L+R Level follows volume setting
DIGITAL INPUTS	PCM 16-24bit, S/P DIF Co-axial 32-192kHz, TOSlink Optical 32-192kHz
DIMENSIONS (W X H X D)	430 x 110 x 340 mm (16.9 x 4.3 x 13.4")
WEIGHT	8.1kg (17.8lbs)
BLUETOOTH	5.0 A2DP/AVRCP supporting SBC
AERIAL INPUTS	FM/DAB+ 75 ohms, Coaxial antenna
SIGNAL TO NOISE (TUNER)	60dB typical (FM) / 90dB typical (DAB)
DISTORTION (TUNER)	<0.4% @ 1kHz 50kHz deviation (FM mono) / <0.05% @ 1kHz (DAB)
IN THE BOX	AXR100D Stereo Receiver, Power Cable, Remote Control, 2 x AAA Batteries, FM/DAB antenna

CX SERIES

Rewarding Performance



CXA61
Integrated Stereo Amplifier

CXA61

Integrated Stereo Amplifier



Rewarding Performance

CXA61 builds on the foundations laid by the original CX Series, and over 50 years' experience of designing amplifiers. It provides a fresh perspective, with 60 watts per channel of pure excitement.

It's a punchy and upfront listen, without giving away detail or precision – whether you want to recreate the atmosphere of the mosh pit or the concert hall.

Highlights

- **60 watts per channel** – for detailed & powerful audio performance
- **Class AB Amplification** – for balanced & efficient reproduction
- **ESS Sabre ES9010 DAC** – get the most from digital sources
- **Digital inputs** – TOSLINK, Coaxial & USB Audio Input (up to 24-bit/384kHz & DSD256 digital files from Mac/PC)
- **Analogue inputs** – 4 pairs of RCA connectors
- **Bluetooth aptX HD** – hi-res wireless connection to Alva ST etc.
- **A/B Speaker Zones** – add speakers to another room

Specification

POWER OUTPUT	60W RMS into 8 Ohms, 90W RMS into 4 Ohms
DAC	ESS Sabre ES9010K2M
FREQUENCY RESPONSE (-1dB)	<5Hz– 60kHz +/-1dB
ANALOGUE AUDIO INPUTS	4 x RCA, 1 x 3.5mm MP3 input (front panel)
DIGITAL AUDIO INPUTS	1 x S/PDIF coaxial, 2 x TOSLINK optical, 1 x USB audio, Bluetooth (integrated)
COMPATIBILITY	TOSLINK optical: 16/24bit 32-96kHz PCM only, S/PDIF coaxial: 16/24bit 32-192kHz PCM only, USB: audio profile 1.0/2.0 (default 2.0), up to 24-bit 384kHz PCM, up to DSD256 or DoP256, Bluetooth: 4.2 A2DP/AVRCP supporting up to aptX HD (24bit 48kHz)
BLUETOOTH APTX HD RECEIVER BUILT-IN	Yes
ROOM TESTED	Yes
OUTPUTS	Speakers A+B, 3.5mm Headphone, Preamp Output, Subwoofer Output
MAX POWER CONSUMPTION	600W
STANDBY POWER CONSUMPTION	<0.5W
DIMENSIONS (W X H X D)	430 x 115 x 341mm (16.9 x 4.5 x 13.4")
WEIGHT	8.3kg (18.3lbs)
IN THE BOX	CXA61 Integrated Amplifier, Power Cable, 3 x AAA Batteries, Remote Control, Control Bus Cable



CXA81

Integrated Stereo Amplifier



CXA81

Integrated Stereo Amplifier



Rewarding Performance

Our CXA81 integrated amplifier builds on the foundations laid by the first CX Series, and over 50 years' experience of building amps.

It offers a progressive perspective – effortless, poised and sophisticated. 80 watts per channel give CXA81 complete authority over music, to reveal every emotion and nuance from your whole music collection – be that streamed or on disc

Highlights

- **Award-Winning Sound** - 4x winner of What Hi-Fi? Product of the Year
- **80 watts per channel** – power to drive the most demanding speakers
- **Class AB Amplification** – for balanced & efficient performance
- **Toroidal Transformer** – for incredible sound-staging
- **High Quality ESS Sabre ES9016 DAC** – to realise digital music at its best
- **Balanced XLR inputs** – for premium connection
- **Bluetooth aptX HD input** – connect wirelessly to devices, incl. Alva TT V2

Specification

POWER OUTPUT	80W RMS into 8 Ohms, 120W RMS into 4 Ohms
DAC	ESS Sabre ES9016K2M
FREQUENCY RESPONSE (-1dB)	<5Hz– 60kHz +/-1dB
ANALOGUE AUDIO INPUTS	1x balanced XLR, 4 x RCA
DIGITAL AUDIO INPUTS	1 x S/PDIF coaxial, 2 x TOSLINK optical, 1 x USB audio, Bluetooth (integrated)
COMPATIBILITY	TOSLINK optical: 16/24bit 32-96kHz PCM only, S/PDIF coaxial: 16/24bit 32-192kHz PCM only, USB: audio profile 1.0/2.0 (default 2.0), up to 24-bit 384kHz PCM, up to DSD256 or DoP256, Bluetooth: 4.2 A2DP/AVRCP supporting up to aptX HD (24bit 48kHz)
BLUETOOTH APTX HD RECEIVER BUILT-IN	Yes
ROOM TESTED	Yes
OUTPUTS	Speakers A+B, 3.5mm Headphone, Preamp Output, Subwoofer Output
MAX POWER CONSUMPTION	750W
STANDBY POWER CONSUMPTION	<0.5W
DIMENSIONS (W X H X D)	430 x 115 x 341mm (16.9 x 4.5 x 13.4")
WEIGHT	8.7kg (19.1lbs)
IN THE BOX	CXA81 Integrated Amplifier, Power Cable, 3 x AAA Batteries, Remote Control, Control Bus Cable, Bluetooth antenna, Quick Start Guide, Safety Guide



CXC
Compact Disc Transport

CXC

Compact Disc Transport



Rewarding Performance

You've spent years collecting CDs,so why not give them the CX sound upgrade too? CXC is a CD transport that's designed to work with DACs and compatible amps – like our award-winning CXA81.

You'll hear incredible detail from your discs, possibly for the first time. CXC breathes new life into CDs – giving you many more years of enjoyment from them.

Highlights

- **High quality audio CD transport** – for detailed playback of music CDs
- **Custom designed S3 Servo** – perfect disc speed & error free playback
- **Digital only S/PDIF Coaxial & Optical output** – for pure digital audio signal
- **Gapless playback** – ideal for classical pieces & DJ mixes
- **Acoustically dampened metal chassis** – isolates components for peak performance

Specification

DIGITAL AUDIO OUTPUTS	S/PDIF coaxial and TOSLINK optical
S/PDIF OUTPUT IMPEDANCE	<75 Ohms
MAX POWER CONSUMPTION	25W
STANDBY POWER CONSUMPTION	<0.5W
GAPLESS PLAYBACK?	Yes
REMOTE CONTROL	Yes
DIMENSIONS (W X H X D)	430 x 85 x 315mm (16.9 x 3.1 x 12.4")
WEIGHT	4.7kg (10.3lbs)
IN THE BOX	CXC CD Transport, Power Cable, 3 x AAA Batteries, Remote Control, Control Bus Cable



CXN V2

Network Player



Rewarding Performance

We shouldn't have favourites, but CXN V2 is something else – audio specialists and our listeners agree. CXN V2 will instantly transform a classic hi-fi stack into a system with a bright future.

And because it's a network device, CXN V2 can be upgraded remotely, via our StreamMagic platform, to receive new features and services.

Highlights

- **Twin Wolfson DACs** – for stunning digital performance
- **Spotify Connect, TIDAL Connect & Qobuz built in** – for the best possible choice
- **High-quality Internet Radio** – thanks to MPEG-DASH support
- **Roon Ready** – consolidate browsing your digital music
- **StreamMagic app & Remote Control** – choose how to use CXN V2
- **Flexible Digital Connectivity** – with USB, Coaxial & TOSLINK or wirelessly with Chromecast built-in & AirPlay 2

Specification

DAC	Dual Wolfson WM8740 24-bit DACs
ROON READY	Yes (Requires a Roon subscription)
DIGITAL FILTER	2nd Generation ATF2 up-sampling to 24-bit/384khz
ANALOGUE FILTER	2-Pole Dual Differential Bessel
USB AUDIO INPUT	USB Type B conforms to USB Audio profile 1.0 or 2.0 (user selectable)
DIGITAL AUDIO INPUTS	S/PDIF Coaxial and TOSLINK Optical)
ANALOGUE AUDIO OUTPUTS	Balanced XLR and unbalanced RCA analogue
DIGITAL AUDIO OUTPUTS	S/PDIF Coaxial and TOSLINK Optical
COMPATIBILITY	UPnP, Local USB media, USB audio 1.0 and 2.0, S/PDIF Toslink and Coaxial, Airplay 2, Chromecast built-in , Internet radio, Spotify Connect, TIDAL, Qobuz, Bluetooth aptX via BT100 Bluetooth receiver (not supplied)
AUDIO FORMATS	ALAC, WAV, FLAC, AIFF, DSD (x64), WMA, MP3, AAC, HE AAC, AAC+, OGG Vorbis
ETHERNET	IEEE 802.3, 10 Base-T or 100 Base-T
WI-FI	IEEE 802.11 b/g or n (2.4GHz)
MAX POWER CONSUMPTION	30W
STANDBY POWER CONSUMPTION	<0.5W
REMOTE CONTROL	Yes
DIMENSIONS (W X H X D)	430 x 85 x 305mm (16.9 x 3.4 x 12.2")
WEIGHT	3.5Kg (7.7lbs)
IN THE BOX	CXN (v2) Network Streamer, Power Cable, 3 x AAA Batteries, Remote Control, Control Bus Cable, Wi-Fi Dongle

EDGE

Redefining Boundaries



Edge NQ
Preamplifier with Network Player

Edge NQ

Preamplifier with Network Player



Redefining Preamplifiers

When creating Edge NQ, we re-evaluated the role of preamplifiers and network players. By combining both functions in a single unit, we reinforced the visual simplicity of Edge and brought tremendous streaming capabilities to premium hi-fi.

Our proven StreamMagic platform ensures stability and delivers an outstanding digital music performance. Well served with inputs, both digital and analogue, Edge NQ is set to be the control room of your system for years to come.

Highlights

- **Preamplifier packed with inputs** – controls power amps, also digital & analogue music sources conveniently
- **Bespoke Preamp Circuit Board** – capacitors replaced with a DC Servo to cancel-out DC bias
- **Network Player** – running on our StreamMagic platform & delivering up to 24-bit/384kHz and DSD256
- **Dual-Concentric Volume & Source Dial** – intuitive & tactile
- **5” Hi-Res Colour Display** – for now playing artwork & source confirmation
- **Handpicked components** – we listen intently & only pick the best sounding

Specification

D/A CONVERTER	THD <0.0008%, 20Hz - 20kHz, 24-bit, 1Vrms output
THD ANALOG SOURCES	<0.0008%, 20Hz – 20kHz, 1Vrms output
FREQUENCY RESPONSE	20Hz-20kHz +/- 0.1dB
S/N RATIO (REF TV OUTPUT)	>103dB
CROSSTALK @ 1KHZ	<100dB
MAX PREAMP OUTPUT	6Vrms single ended or 6Vrms + 6Vrms balanced
FIXED LINE-OUT MODE	Yes. The preamplifier can be disabled via the dedicated Edge app for iOS and Android. Within the app, simply turn off 'preamplifier mode' in the settings to run a line out via XLR or RCA to an integrated amplifier.
USB AUDIO INPUT	USB Audio Class 2.0 supporting up to 24-bit 384kHz PCM, or up to DSD256
USB DRIVE INPUT	1 x USB 2.0 current limited to 1A, FAT32 / NTFS / HFS / HFS+
BLUETOOTH	4.1 (Smart/BLE enabled) A2DP/AVRCP supporting SBC, AAC, aptX and aptX HD
UPNP CONNECTIVITY	Yes - Accesible via supported app
CHROMECAST BUILT-IN	YES
ROON READY	Yes (Requires a Roon subscription)
TOSLINK INPUT	16/24-bit 32-96kHz
COAX S/PDIF INPUT	16/24-bit 32-192kHz
WI-FI	IEEE 802.11 b/g or n (2.4GHz), Encryption WEP, WPA, WPA2
ETHERNET	IEEE 802.3, 10 Base-T or 100 Base-T
MAX POWER CONSUMPTION	100W
STANDBY POWER CONSUMPTION	<0.5W
DIMENSIONS (W X H X D)	460 x 120 x 405mm (18.1 x 4.7 x 15.9")
WEIGHT	10.2kg (22.4lbs)
CHROMECAST BUILT-IN	Hi-res wireless connectivity that's compatible with hundreds of Android and iOS apps. Chromecast built-in is a trademark of Google LLC
IN THE BOX	Edge NQ Pre-amplifier and Network Player; 1.5M Power Lead; Edge Remote Control; 3 x AAA Batteries; Bluetooth Antenna; Wi-Fi Dongle; Edge Link Cable; Edge NQ User Manual



Edge A
Integrated Amplifier

Edge A

Integrated Amplifier



Redefining Integrated Amplifiers

With Edge A, we took over 50 years of amplifier know-how and challenged ourselves to push the design further. The result is our most accomplished integrated amplifier, made without compromise.

Edge A's gently curved aluminium form, with discreet laser etched logo, single on/off button and centrally located control dial, exudes confidence. It's equipped to handle a variety of digital and analogue sources, and to output them at a smooth 100 watts per channel.

Highlights

- **Opposing Symmetry Twin Toroidal Transformers** – huge reserves of power for consistent tonality
- **Class XA Amplification** – unique blend of Class A & Class AB amplification to reduce distortion & improve efficiency
- **Bespoke Preamp Circuit Board** – capacitors replaced with a DC Servo to cancel-out DC bias
- **Dual-Concentric Volume & Source Dial** – intuitive & tactile
- **Packed with Digital & Analogue Inputs** – ready for all your musical sources
- **Playback of Hi-Res Audio** – up to 24-bit/384kHz PCM DSD256
- **Bluetooth aptX HD** – play wirelessly from Bluetooth devices at up to 24bit/48kHz Hi-Res quality

Specification

CONTINUOUS POWER OUTPUT	100W RMS into 8 Ohms; 200W RMS into 4 Ohms
THD (UNWEIGHTED)	<0.002% 1kHz at rated power (8 Ohms) <0.02% 20Hz – 20kHz at rated power (8 Ohms)
FREQUENCY RESPONSE (INTO 8 OHM)	<3Hz – >80kHz +/-1dB
S/N RATIO (REF FULL POWER)	>103dB
CROSSTALK @ 1KHZ	<-100dB
INPUT SENSITIVITY	Input A1-A2 (unbalanced) 380mV RMS
INPUT IMPEDANCES	Input A3 (balanced) 47k Ohm; Input A1-A2 (unbalanced) 47k Ohm
INPUTS	Balanced, Coax S/PDIF, TOSLINK, USB Audio, Unbalanced, Bluetooth, Audio Return Channel (ARC)
OUTPUTS	Speakers, Preamplifier, Headphones (impedance of between 12 and 600 ohms are recommended)
USB AUDIO INPUT	USB Audio Class 2.0 supporting up to 24-bit 384kHz PCM, or up to DSD256
BLUETOOTH	4.1 (Smart/BLE enabled) A2DP/AVRCP supporting formats up to aptX HD
TOSLINK INPUT	16/24 bits, 32-96kHz
COAX S/PDIF INPUT	16/24 bits, 32-192kHz
MAX POWER CONSUMPTION	1000W
STANDBY POWER CONSUMPTION	<0.5W
DIMENSIONS	460 x 150 x 405mm (18.1 x 5.9 x 15.9")
WEIGHT	24.4kg (53.7lbs)
IN THE BOX	Edge A Integrated Amplifier; 1.5M Power Lead; Edge Remote Control; 3 x AAA Batteries; Bluetooth Antenna; Edge Link Cable; Edge A User Manual



Edge W
Power Amplifier

Edge W
Power Amplifier



Redefining Power Amplification

With Edge W we built the stereo power amp we’ve always wanted to make – one that makes no compromises and appeals to the most discerning listener. Architectural in scale and minimalistic form, Edge W’s curved aluminium casework exudes confidence, provides longevity and, of course, protects the signal path from interference.

With 100 watts per channel at your disposal, it gives your hi-fi system the pure power it deserves and the headroom to drive your favourite speakers with ease.

Highlights

- **Opposing Symmetry Twin Toroidal Transformers** – huge reserves of power for consistent tonality & cancels-out electrical interference
- **Class XA Amplification** – unique blend of Class A & Class AB amplification to reduce distortion & improve efficiency
- **Short signal path** – only 14 components between you & your music
- **DC Servo** – instead of using capacitors that can colour your sound, we use a DC Servo to cancel out any DC bias from the amplification process.

Specification

CONTINUOUS POWER OUTPUT	100W RMS into 8 Ohms; 200W RMS into 4 Ohms
THD (UNWEIGHTED)	<0.002% 1kHz at rated power (8 Ohms); <0.02% 20Hz – 20kHz at rated power (8 Ohms)
FREQUENCY RESPONSE	<3Hz – >80kHz +/-1dB
S/N RATIO (REF 1W INTO 8 OHM)	>93dB
CROSSTALK @ 1KHZ	<-100dB
S/N RATIO (REF FULL POWER)	>113dB
INPUT SENSITIVITY	Input A1-A2 (unbalanced) 1.09V RMS
INPUT IMPEDANCES	Input A3 (balanced) 47k Ohm; Input A1-A2 (unbalanced) 47k Ohm
INPUTS	Balanced, Unbalanced
OUTPUTS	Speakers, Loop out
MAX POWER CONSUMPTION	100W
STANDBY POWER CONSUMPTION	<0.5W
DIMENSIONS (W X H X D)	460 x 150 x 405mm (18.1 x 5.9 x 15.9")
WEIGHT	23.6kg (51.9lbs)
IN THE BOX	Edge W Power Amplifier; 1.5M Power Lead; Edge Link Cable; Edge W User Manual, Warranty Card



Edge M
Monoblock Power Amplifier

Edge M

Monoblock Power Amplifier



Redefining Monoblock Amplification

We developed Edge M in response to listener demand. We rose to your challenge, applying our Edge philosophy to monoblock power amps. Designed to be used in pairs, Edge M amps are fully balanced from input to output – with one unit dedicated to the right speaker and the other to the left.

Delivering 200 watts of pure power to each channel, with absolutely no compromise in performance and in breath-taking clarity – Edge M is a true celebration of the artist's you play through it.

Highlights

- **Monoblock design, fully balanced from input to output** – cancelling noise & distortion
- **Opposing Symmetry Twin Toroidal Transformers** – huge reserves of power for consistent tonality & cancels-out electrical interference
- **Class XA Amplification** – unique blend of Class A & Class AB amplification to reduce distortion & improve efficiency
- **Short signal path** – only 14 components between you & your music
- **DC Servo** – to cancel out any DC bias from the amplification process
- **Bi-Wire Loop output** - Use 2x Edge M per speaker

Specification

CONTINUOUS POWER OUTPUT (<1% THD+N)	200W RMS into 8 Ohms, 350W RMS into 4 Ohms
THD (UNWEIGHTED)	<0.002% 1kHz at rated power (8 Ohms) <0.02% 20Hz – 20kHz at rated power (8 Ohms)
FREQUENCY RESPONSE (INTO 8 OHM)	<3Hz – >80kHz +/-1dB
S/N RATIO (REF 1W INTO 8 OHM)	>93dB
S/N RATIO (REF MAX POWER)	>115dB
GAIN	28dB (RCA)/ 22dB (XLR)
INPUT SENSITIVITY	1.7V RMS (RCA) / 3.4V RMS (XLR)
INPUT IMPEDANCES	balanced 100k Ohm, unbalanced 47k Ohm
INPUTS	Balanced, Unbalanced
OUTPUTS	Speaker out, Loop out (balanced and unbalanced)
MAX POWER CONSUMPTION	1000W
STANDBY POWER CONSUMPTION	<0.5W
DIMENSIONS (W X H X D)	460 x 150 x 405mm (18.1 x 5.9 x 15.9")
WEIGHT	23.6kg (52.0lbs)
IN THE BOX	EDGE M Monoblock Power Amplifier, Power Cable, Link Cable, Instruction Manual

EVO

The Evolution of Hi-Fi



EVO 75
All-in-One Player

EVO 75

All-in-One Player



All-in-one Simplicity - Just Add Speakers

Combining streaming smarts and high-class amplification in one unit means with Evo 75 you only need to choose speakers and a streaming service to pair with it to serve up thrilling sound quality.

Playing music from Evo 75 means saying goodbye to metres of connection cables, and hello to intuitive, straightforward functionality in one sleek, good-looking box.

Great sound and timeless style never go out of fashion.

Highlights

- **75 watts per channel power** – of room filling sound
- **ESS Sabre ESS SABRE ES9016k2m Ultra DAC** – for accurate & detailed musical performance
- **StreamMagic Gen 4 module** – for unparalleled streaming experience
- **Bluetooth aptX HD** – for hi-res playback from & to compatible devices
- **Digital & Analogue inputs** – from Evo CD, optical & coax digital, plus RCA
- **ARC input** – for connection of TV HDMI output

Specification

POWER OUTPUT	75W into 8 Ohms
AMPLIFICATION	Class-D Hypex Ncore®
DAC	ESS Sabre ES9016K2M
FREQUENCY RESPONSE	20Hz – 20kHz +0/-3dB
ANALOGUE AUDIO INPUTS	1 x RCA
DIGITAL AUDIO INPUTS	1 x TOSLINK optical, 1 x S/PDIF coaxial, 1 x TV ARC, Bluetooth (integrated)
BLUETOOTH	4.2 A2DP/AVRCP supporting SBC, aptX and aptX HD codecs
COMPATIBILITY	TOSLINK optical: 16/24bit 32-96kHz PCM only S/PDIF coaxial: 16/24bit 32-192kHz PCM only, Bluetooth: 4.2 A2DP/AVRCP supporting up to aptX HD (24bit 48kHz) UPnP, Local USB media, Airplay 2, Chromecast built-in, Internet Radio, Spotify Connect, TIDAL, MQA, Qobuz, Roon Ready, ARC: 16/24bit 32-192kHz PCM only, Deezer
AUDIO FORMATS	ALAC, WAV, FLAC, AIFF, DSD (x256), WMA, MP3, AAC, HE AAC AAC+, OGG Vorbis
OUTPUTS	Speakers, 3.5mm headphone, Preamp Output, Subwoofer Output, Bluetooth: 4.2 A2DP/AVRCP supporting up to aptX HD
ETHERNET	IEEE 802.3, 10 Base-T or 100 Base-T
WI-FI	Dual Band 2.4/5GHz
MAX POWER CONSUMPTION	400W
STANDBY POWER CONSUMPTION	<0.5W
DIMENSIONS (W X H X D)	317 x 89 x 352mm
WEIGHT	5.0 kg
IN THE BOX	Evo 75 All-in-One Player, Quick Start Guide, Safety Guide, Remote Control, Mains Lead, 2 x AAA Batteries, Customisable Side Panels x 2



EVO 150
All-in-One Player

EVO 150

All-in-One Player



Tomorrow’s Hi-Fi, Today

With Evo 150, we’ve brought your audio past and present into the future. With outstanding Hypex NCore Class D amplification and our class-leading StreamMagic streaming platform on board - all you need to do is add speakers to enjoy superb high-resolution audio quality from one elegant, discreet box.

And thanks to its suite of digital and analogue inputs, as well as its high-quality digital-to-analogue convertor, Evo can be the heart of your hi-fi system for years to come.

Highlights

- **Powerful 150 watts per channel** – capable of driving 2 sets of speakers
- **High quality ESS SABRE ES9018k2m Reference DAC** – for highly accurate & detailed musical performance
- **Integrated MM Phono Stage** – for a wide choice of turntables
- **XLR balanced inputs** – for connection of high-quality analogue equipment
- **StreamMagic Gen 4 module** – for an unparalleled streaming experience
- **Bluetooth aptX HD** – for hi-res playback from & to compatible device

Specification

POWER OUTPUT	150W into 8 Ohms
AMPLIFICATION	Class-D Hypex Ncore®
DAC	ESS Sabre ES9018K2M
FREQUENCY RESPONSE	20Hz – 20kHz +0/-3dB
ANALOGUE AUDIO INPUTS	1 x RCA, 1 x balanced XLR, 1 x Moving Magnet Phono stage
DIGITAL AUDIO INPUTS	2 x TOSLINK optical, 1 x S/PDIF coaxial, 1 x TV ARC, Bluetooth (integrated), USB Audio
USB AUDIO INPUT	USB Type B conforming to USB Audio Class 1 or USB Audio Class 2 (user selectable)
BLUETOOTH	4.2 A2DP/AVRCP supporting SBC, aptX and aptX HD codecs
COMPATIBILITY	TOSLINK optical: 16/24bit 32-96kHz PCM only S/PDIF coaxial: 16/24bit 32-192kHz PCM only USB Audio Class 1: Up to 24-bit 96kHz (asynchronous) USB Audio Class 2: Up to 24-bit 384kHz (asynchronous) and up to DSD 256 Bluetooth: 4.2 A2DP/AVRCP supporting up to aptX HD (24bit 48kHz) UPnP, Local USB media, Airplay 2, Chromecast built-in, Internet Radio, Spotify Connect, TIDAL, MQA, Qobuz, Roon Ready, ARC: 16/24bit 32-192kHz PCM only, Deezer
AUDIO FORMATS	ALAC, WAV, FLAC, AIFF, DSD (x256), WMA, MP3, AAC, HE AAC AAC+, OGG Vorbis
OUTPUTS	Speakers A+B, 3.5mm headphone, Preamp Output, Subwoofer Output, Bluetooth: 4.2 A2DP/AVRCP supporting up to aptX HD
ETHERNET	IEEE 802.3, 10 Base-T or 100 Base-T
WI-FI	Dual Band 2.4/5GHz
MAX POWER CONSUMPTION	700W
STANDBY POWER CONSUMPTION	<0.5W
DIMENSIONS (W X H X D)	317 x 89 x 352mm
WEIGHT	5.3 kg
IN THE BOX	Evo 150 All-in-One player, Quick Start Guide, Safety Guide, Mains Lead, Remote Control, 2 x AAA Batteries, Customisable Side Panels x 2



EVO CD

Compact Disc Transport



A New Life for CD

Evo CD is the compact disc transport developed to exclusively partner Evo all-in-one players. It shares the same eye-catching design, is crafted from the same premium materials and is engineered to the same exacting standards.

Evo CD extracts every piece of musical detail from your discs, then passes it seamlessly to Evo. Your CD collection is now set to join the hi-fi evolution.

Highlights

- **High quality audio CD transport** – designed exclusively for Evo all-in-one players
- **Custom designed S5 Servo** – perfect disc speed & error free playback
- **Custom digital output to Evo** – for pure digital audio signal & retrieval of album artwork for Evo to display
- **Gapless playback** – ideal for classical pieces & DJ mixes
- **Acoustically dampened metal chassis & CD tray** – isolates components, for peak musical performance
- **Changeable side panels** – to match your Evo all-in-one player

Specification

OUTPUT	Custom connection to main Evo unit
COMPATIBILITY	CD-DA, CD-R, CD-RW only
MAXIMUM POWER CONSUMPTION	20W
STANDBY POWER CONSUMPTION	<0.5W
DIMENSIONS (W X H X D)	317 x 89 x 352mm
WEIGHT	5.0 kg

HALF-WIDTH HI-FI
Rewarding Performance



DacMagic 200M
Digital to Analogue Converter and Headphone Amplifier

DacMagic 200M

Digital to Analogue Converter and Headphone Amplifier



Shine the Light on Music

Digital audio files can be packed with incredible musical detail, but they need to be converted to analogue first for you to hear it.

And how good it sounds will depend on how well the digital audio from your computer, network player or CD is converted. DacMagic 200M's twin ESS DACs decrease crosstalk and improve separation because there's a DAC dedicated to both left and right channels

These fully balanced, optimised, and efficient signal paths reveal previously hidden glittering musical prizes

Highlights

- **Dual ESS SABRE ES9028Q2M Reference DACs** – one per channel, handles digital audio up to 24-bit/768kHz or DSD512
- **Digital Inputs:** 2 pairs of optical & coaxial terminals, plus USB Audio – for audio sources incl. CD & Blu-ray players, laptops, games consoles etc.
- **Analogue Outputs:** ¼" headphone, XLR & RCA connectors – for max. versatility
- **Bluetooth aptX input** – wirelessly receive digital audio from smart devices
- **Supports MQA** – for artist-approved studio-quality digital audio
- **Compact half-width hi-fi unit** – small enough to fit, big enough to perform

Specification

DIGITAL TO ANALOGUE CONVERTERS	Dual ESS ES9028Q2M DACs
DIGITAL FILTER	Selectable, Fast – Slow – Short delay
FREQUENCY RESPONSE	10Hz to 50kHz (±1dB)
THD+N @ 1KHZ 0DBFS	<0.0005% (A-Weighted)
SIGNAL TO NOISE RATIO	>115dB (A-Weighted)
CROSSTALK @ 10KHZ	< -110dB
OUTPUT IMPEDANCE	<50 Ohms (unbal), <100 Ohm (bal)
MAX. OUTPUT LEVEL (UNBALANCED)	2.1V rms (fixed or variable – user selectable)
MAX. OUTPUT LEVEL (BALANCED)	4.2V rms (fixed or variable – user selectable)
DIGITAL INPUT WORD WIDTHS SUPPORTED	16bit (Bluetooth), 16-24bit (Optical, Coaxial), 16-24bit (USB)
DIGITAL INPUT SAMPLING FREQUENCIES SUPPORTED	44.1kHz to 96kHz PCM, DoP64 (Optical), 44.1kHz to 192kHz PCM, DoP64 (Coaxial), 44.1kHz to 768kHz PCM, Native DSD 64x to 512x, DoP 64x to 256x (USB)
MQA COMPATIBILITY	Full decoding (Core + Renderer)
BLUETOOTH	v4.2, A2DP profile, SBC and AptX codecs
ROOM TESTED	Yes
HEADPHONE OUTPUT THD+N	< 0.001% at 1kHz 0dBFS @ 100mW into 32ohm
HEADPHONE OUTPUT S/N	> 115dB (A-Weighted)
MAX OUTPUT POWER	>300mW @ 32ohm, >65mW @ 150ohm
FREQUENCY RESPONSE	10Hz - 50kHz (±1dB)
RECOMMEND HEADPHONE IMPEDANCE	10 Ohm to 600 Ohm
MAX POWER CONSUMPTION	12W
COLOUR	Lunar Grey
DIMENSIONS (W X H X D)	215 x 52 x 191mm; (8.6 x 2.0 x 7.6")
WEIGHT	1.2kg/2.6lbs



MXN10
Network Player

MXN10
Network Player



Compact Size, Massive Choice

Our MXN10 network player can bring the world of Hi-Res music to much-loved hi-fi set-ups and other audio systems.

Its half-width compact footprint offers flexibility of placement. MXN10 can access free music, including internet radio, as well as subscription services – many of which offer free trials, so you'll soon find your perfect streaming partner.

MXN10 can play Hi-Res music from USB and NAS drives too. That's digital music from limitless sources routed through one compact unit – all conveniently controlled with our StreamMagic app from your mobile.

Highlights

- **StreamMagic Gen 4 Module** – fast music retrieval & high-quality sound
- **ESS SABRE ES9033Q DAC** – for the latest streaming capabilities
- **High-quality Internet Radio** – using MPEG-DASH support
- **Spotify Connect, TIDAL & Qobuz built in** – for best possible sound
- **Roon Ready** – simple consolidated browsing of digital music sources
- **Connectivity Choice** – USB playback, Bluetooth 5.0, Airplay 2 & Chromecast built-in
- **Choice of Output** – RCA/phono plus, digital coax & optical connections
- **Compact, Half Width Footprint** – for flexible placement

Specification

INPUTS	Ethernet, USB socket (mass storage), Wi-Fi, Bluetooth
OUTPUTS	Line out (unbalanced), Digital out (Coax and Optical)
DAC	ESS Sabre ES9033Q
FREQUENCY RESPONSE	20Hz – 70kHz +0/-1dB
ETHERNET	IEEE 802.3 10 Base-T or 100 Base-T
WI-FI	Wi-Fi 5 dual band 2.4/5GHz
BLUETOOTH	5.0 A2DP/AVRCP supporting SBC and AAC
COMPATIBILITY	UPnP, Local USB media, Internet Radio, Chromecast, Spotify connect, Tidal, Qobuz, Roon Ready, Airplay 2
AUDIO FORMATS	ALAC, WAV, FLAC, AIFF, DSD (x512), WMA, MP3, AAC, HE AAC, AAC+, OGG Vorbis
HI-RES SUPPORT	Up to 768KHz 32bit PCM, up to DSD512
MAX POWER CONSUMPTION	20W
STANDBY POWER CONSUMPTION	<0.5W
DIMENSIONS (W X H X D)	215 x 52 x 191mm; (8.6 x 2.0 x 7.6")
WEIGHT	1.2kg/2.6lbs
IN THE BOX	MXN10 player, WiFi/BT Antenna (x2), Safety Guide, Quick start guide, Regional mains lead

MINX

Mighty Small Speakers



MINX MIN12
Compact Speaker

MINX MIN12

Compact Speaker



Small Speakers, Big Sound

Minx Min12 is a compact speaker designed to be discreet. Not much bigger than a Rubik’s Cube®, this tiny speaker can be placed practically anywhere to offer a surprisingly rich sound.

Min 12s are sold individually, so that you can buy exactly what you need, to partner with a Minx subwoofer, to create a bespoke system with a full-bodied sound.

Highlights

- **Super compact size** – fits pretty much anywhere
- **BMR Speaker Tech** – wide sound dispersal for flexible positioning
- **High Gloss ABS Enclosure** – looks good & focuses sound
- **Available in Black or White** – choose the colour that suits you
- **High Quality Cable connectors** – fit better cable for better sound
- **Sold individually** – buy only what you need

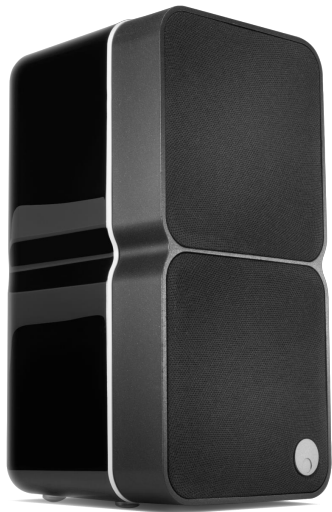
Specification

SENSITIVITY (SPL)	86dB (2.83 Vrms input)
FREQUENCY RESPONSE	150Hz-20kHz
IMPEDANCE	8 Ohms compatible
RECOMMENDED AMPLIFIER POWER	25-200 watts
DIMENSIONS (W X H X D)	78 x 78 x 85mm (3.1 x 3.1 x 3.3")
WEIGHT	0.43 kg (0.95lbs)
COLOUR	High gloss black or High gloss white
IN THE BOX	1x speaker



MINX MIN22
Compact Speaker

MINX MIN22
Compact Speaker



Small Speakers, Big Sound

The size of 2 stacked Rubik’s Cubes®, Min 22 delivers beyond expectation. Min 22 adds a dedicated low frequency driver over the smaller Min 12. It’s designed to be teamed with a mix of Minx speakers, including one of our subwoofers for a full sound.

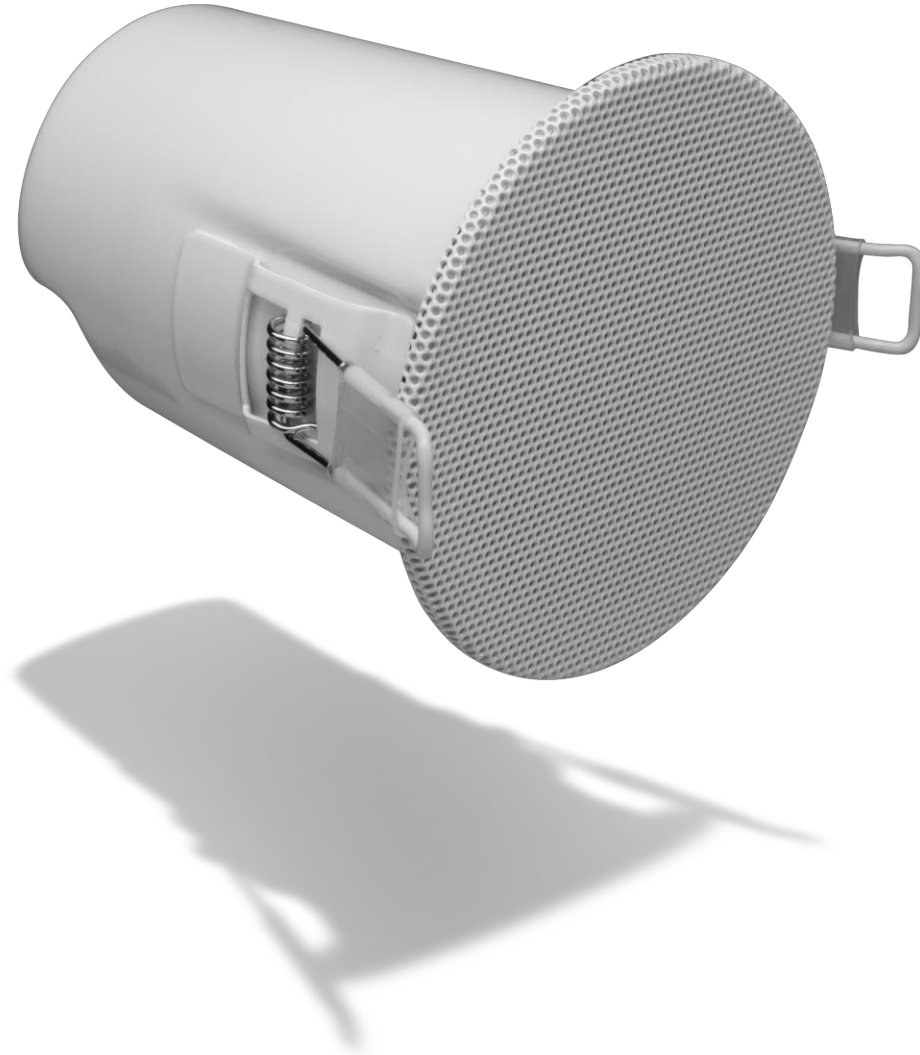
Equally at home on the study, the dining room or as a key component in your home theatre set-up.

Specification

SENSITIVITY (SPL)	88dB (2.83 Vrms input)
FREQUENCY RESPONSE	120Hz-20kHz
IMPEDANCE	8 Ohms compatible
RECOMMENDED AMPLIFIER POWER	25-200 watts
DIMENSIONS (W X H X D)	78 x 154 x 85mm (6.0 x 3.1 x 3.3")
WEIGHT	0.75 kg (1.65lbs)
COLOUR	High gloss black or High gloss white
IN THE BOX	1x speaker

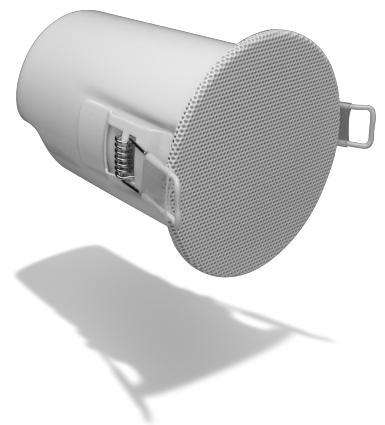
Highlights

- **Super compact size** – fit vertically or horizontally
- **BMR Speaker Tech** – wide sound dispersal for flexible positioning
- **High Gloss ABS Enclosure** – looks good & focuses sound
- **Available in Black or White** – choose the colour that suits you
- **High Quality Cable connectors** – fit better cable for better sound
- **Sold individually** – buy only what you need



MINX C46
Compact In-Ceiling Speaker

MINX C46
Compact In-Ceiling Speaker



Small Speakers, Big Sound

Minx C46 comes in white – designed to blend in to your ceiling and being practically indistinguishable from recessed LED lighting. You can even paint the trim if your ceiling's another shade.

They're an easy upgrade to an AV system, adding true overhead sound effects and ideal in rooms where you need clear surfaces – like kitchens.

Highlights

- **Combined BMR & Pistonic Speaker Tech** – for best downward firing sound
- **Compact size** – won't dominate your room
- **Fits Recessed LED Lighting voids** – easy to fit & blend in
- **White with Paintable Trim** – blends in easily to ceilings
- **IP65 Rating** – suitable for kitchens
- **Sold individually** – buy only what you need

Specification

FREQUENCY RESPONSE	120Hz-20kHz
IMPEDANCE	8 Ohms
DRIVERS	1 x 2.25" (57mm) BMR driver
DIMENSIONS (H X D)	98 x Ø 88mm (3.6 x Ø 3.4") Mounting hole required: Ø 75mm (3")
WEIGHT	0.46 kg (1.01lbs)
COLOUR	High gloss black or High gloss white
IN THE BOX	1x speaker



MINX X201
200W Subwoofer

MINX X201

200W Subwoofer



Compact Sub. Full Bodied Sound

Minx X201 delivers an enhanced bass response with plenty of detail and control – thanks to a single powered driver and twin passive cones.

Although compact, X201 packs a mighty 200W punch from its active amplifier. With gain, phase and crossover control for fine-tuning and integration into a complete Minx system.

Beautifully finished in either gloss black or white, X201 is ideal for smaller spaces.

Specification

POWER OUTPUT	200W
FREQUENCY RESPONSE	36Hz (-6dB) – 200Hz
CROSSOVER	Active – variable 50Hz-200Hz
DRIVERS	1 x 6.5" subwoofer 2 x 6.5" passive radiator
DIMENSIONS (W X H X D)	210 x 219 x 222mm (8.6 x 8.3 x 8.7")
WEIGHT	5.0Kg (11.0lbs)
COLOUR	High gloss black High gloss white

Highlights

- **Powerful 200W Output** – contained in a compact body
- **Twin Auxiliary Bass Drivers** – for richer sound
- **Fully Adjustable Sound** – tune the speaker to suit your setup
- **Auto Off & On** – for convenience & efficiency
- **High Gloss Enclosure** – looks good & resists knocks
- **Available in Black or White** – choose the colour that suits you



MINX X301
300W Subwoofer

MINX X301

300W Subwoofer



Compact Sub. Full Bodied Sound

More compact than other subwoofers in its class, Minx X301 packs a hefty 300W bass punch. Its active amplifier offers gain (volume), phase and crossover control for full integration into a complete Minx system.

Finished in a special gloss black or white lacquer, the X301 is the perfect match for home cinema systems. It's small enough to hide in a corner, but attractive enough to leave on display.

Specification

POWER OUTPUT	300W
FREQUENCY RESPONSE	31Hz (-6dB) – 200Hz
CROSSOVER	Active – variable 50Hz-200Hz
DRIVERS	1 x 8" subwoofer 1 x 8" passive radiator
DIMENSIONS (W X H X D)	266 x 311 x 278mm (12.4 x 10.5 x 11.0")
WEIGHT	7.5Kg (16.5lbs)
COLOUR	High gloss black High gloss white

Highlights

- **Powerful 300W Output** – won't dominate your room
- **Auxiliary Bass Driver** – for richer sound
- **Fully Adjustable Sound** – tune the speaker to suit your setup
- **Auto Off & On** – for convenience & efficiency
- **High Gloss Enclosure** – looks good & resists knocks
- **Available in Black or White** – choose the colour that suits you