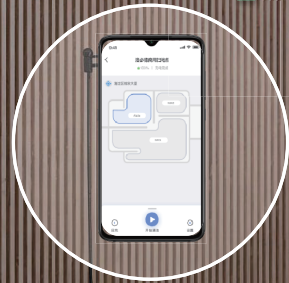
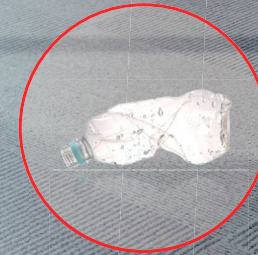


AI-empowered intelligent patrol cleaning to stay clean at all times



The robot can autonomously identify floor stains and complete the cleaning in patrol mode. Meanwhile, it will report the large garbage unable to be cleaned and agilely deal with emergencies.



Multi-Port Control, Intelligent Management



You can assign cleaning tasks for designated spots at fixed times to the robot through its screen, the cloud platform, or the app.



Robot
remote
monitoring



Upload
cleaning data
in real time



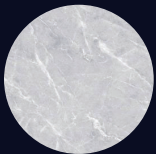
Autonomously
generate visualized
data reports

Agile and efficient, easy to use in commercial scenarios

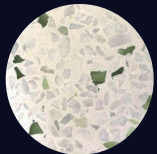
Whether it's a hard floor or a soft carpet, there is no problem for the robot in realizing daily dust removal or deep cleaning.

Application Scenarios | Hotels, Apartments, Office buildings, Exhibition halls, Banks, Supermarkets, Schools

Applicable floor | Both hard and soft floors



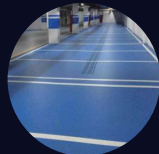
Marble



Terrazzo



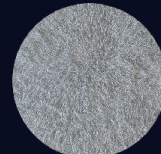
Tiles



Epoxy



Cement ground



Carpet



Product Structure



Product Parameters

Robot body size (L*W*H)	595mm*540mm*715mm	Weight	50kg
Clean water/sewage tank volume	17L/14L	Battery capacity	24V 40Ah, powerful lithium battery with a total capacity of 960 Wh
Cleaning mode	sweeping, scrubbing, pushing, vacuuming and mopping	Cleaning efficiency	0~1440m²/h, 576m²/h as default
Minimum wall spacing	0cm	Travel speed	0~1m/s , 0.4 m/s as default
Battery life	2.5h (scrubbing) ,5h (sweeping/vacuuming /mopping) ,12h (dust pushing)	Noise	≤ 70db
Cleaning width	sweeping/scrubbing/vacuuming/mop ping: 400 mm; dust pushing: 500mm	Interactive mode	screen/voice control

ROBINT

Beijing Robint Technology Co. Ltd. (i.e., Robint) is a high-tech enterprise, focusing on Artificial Intelligence (AI) R&D, design, production and sales. Led by an internationally and nationally well-known research team with distinguished professors, researchers and engineers with PhD or master degrees, the company is dedicated to inventing the AI-empowered intelligent service robots for commercial and domestic users. Combined with the efficient and convenient one-stop multi-functional service system and the company's first-ever smart robots-group collaboration technology, the Robint robots maximize the cost-effectiveness while offering the best user experience. As of now, Robint, as the market leader in mass-production robots, has produced various service robots, which have been used for commercial/medical/industrial/food delivery, disinfection, family health management, and mobility assistance, and have been deployed in many scenarios including hotels, restaurants, apartments, hospitals, airports, supermarkets, warehouses, and factories. With the core concept of “*AI for People*”, Robint remains committed to benefiting human beings with a fusion of “*AI + Robot*”. The company is and will continue to be a pioneer in exploring AI and robot technologies and innovatively integrating AI into robots for various applications to achieve the company’s goal of serving people with intelligent service robots.



National High-tech
Enterprise



Quality Service Integrity
Enterprise



A.I.



Smart Services



Smart City

Robint's Strength

Robint's R&D division is teamed up by talents, specialized in cutting-edge technologies, for instance, AI, big data, Internet of Things, robotics, from prestigious universities at home and abroad such as **University of California and Beihang University**. They all research expertise with many scientific research achievements.

Now, of over 200 Robint staff, R&D team accounts for **60%** in which 52% holds PhDs and master's degrees or above.



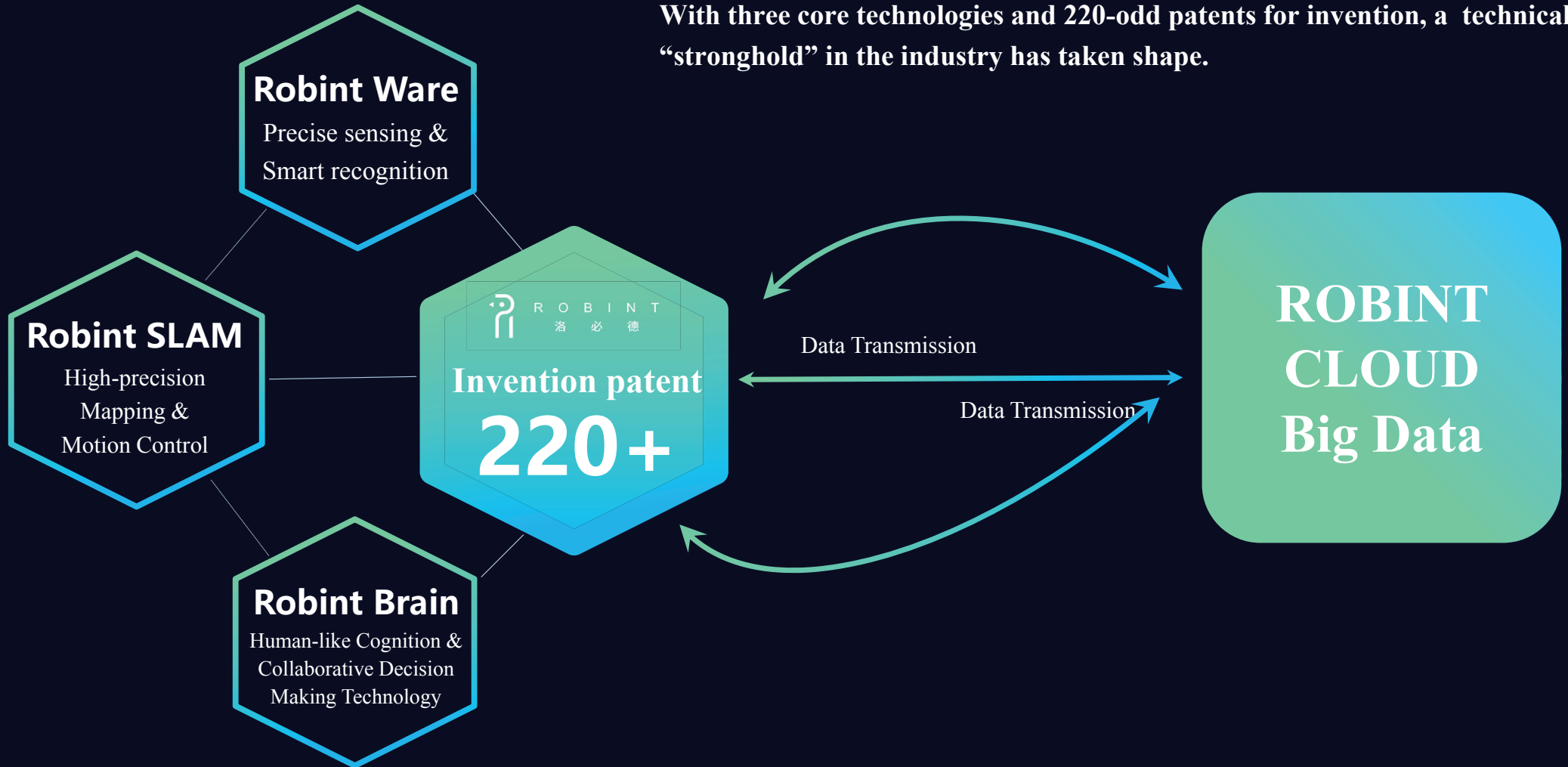
Total
Employees
200+

R&D Team
60%

PhD & MA
52%

Robint's Strength

With three core technologies and 220-odd patents for invention, a technical “stronghold” in the industry has taken shape.



FCC WARNING

This device complies with part 15 of the FCC Rules. Operation is subject to the following two conditions: (1) this device may not cause harmful interference, and (2) this device must accept any interference received, including interference that may cause undesired operation. Any changes or modifications not expressly approved by the party responsible for compliance could void the user's authority to operate the equipment. NOTE: This equipment has been tested and found to comply with the limits for a Class B digital device, pursuant to Part 15 of the FCC Rules. These limits are designed to provide reasonable protection against harmful interference in a residential installation. This equipment generates, uses and can radiate radio frequency energy and, if not installed and used in accordance with the instructions, may cause harmful interference to radio communications. However, there is no guarantee that interference will not occur in a particular installation. If this equipment does cause harmful interference to radio or television reception, which can be determined by turning the equipment off and on, the user is encouraged to try to correct the interference by one or more of the following measures:— Reorient or relocate the receiving antenna.— Increase the separation between the equipment and receiver.— Connect the equipment into an outlet on a circuit different from that to which the receiver is connected.— Consult the dealer or an experienced radio/TV technician for help. To maintain compliance with FCC's RF Exposure guidelines, This equipment should be installed and operated with minimum 20cm distance between the radiator and your body: Use only the supplied antenna.

An abstract graphic on the left side of the slide. It features a light blue, semi-transparent globe with a grid of dots. Overlaid on the globe are several white orbital lines with small white circles at their foci, resembling a stylized atomic model or a celestial system. The background is dark blue with faint binary code (0s and 1s) scattered across it.

Contact us

Hotline of Beijing R&D Headquarters:

010-82230700

Address of Beijing R&D Headquarters:

2006, Block A, Jinqiu International Building,
Zhichun Road, Haidian District, Beijing

Company Official Website:

<https://www.irobint.com/>



Follow our WeChat public account
for more information