



Series MSX and MSX Pro Magnesense® Pressure Transmitter

Specifications - Installation and Operating Instructions

QUICK START GUIDE

1. **Mount** transmitter with pressure ports facing down. Do not over-tighten mounting screws.
2. **Attach wires** following diagram on reverse side.
3. **Set Zero Calibration.** Apply zero pressure to both pressure ports on and pressing the zero button for 3 seconds.
4. **Scan** QR code with smart device to open the product web page for additional resources.

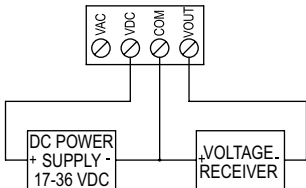


MSX

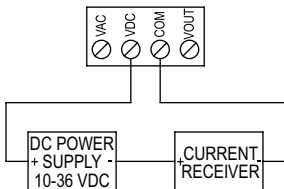


MSX PRO

WIRING INFORMATION



4-20 mA



3-wire voltage (with DC supply)

See online User Guide for AC wiring.

Printed in U.S.A. 8/20

FR# 444572-00

©Copyright 2020 Dwyer Instruments, Inc.