

APP



Google Play and the Google Play logo are trademarks of Google Inc.



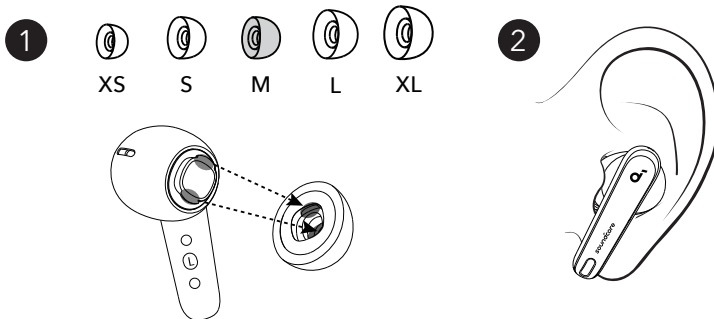
Apple and the Apple logo are trademarks of Apple Inc.



Download the soundcore app to get the most out of your earbuds with 3D surround sound, ambient sound modes, HearID sound, gaming mode, firmware updates, and more.

If your earbuds cannot connect with the soundcore app, re-install the app or update it to the latest version in your mobile app store.

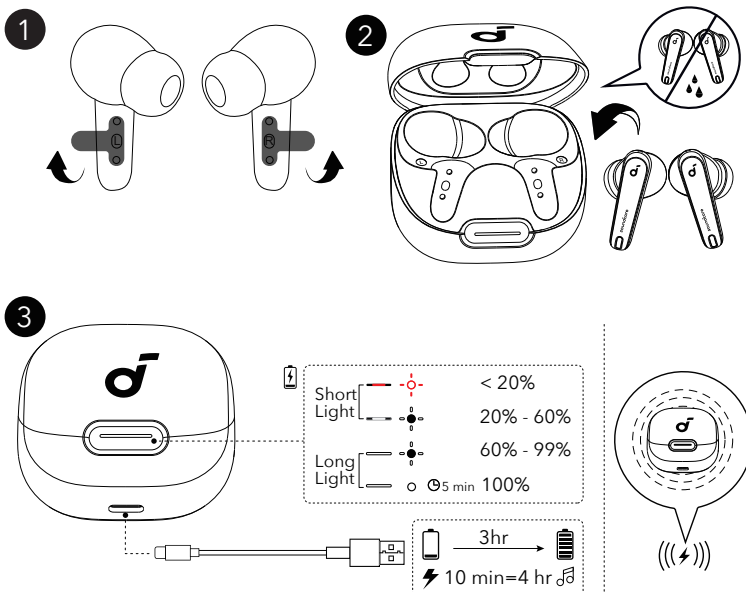
WEARING



Choose the ear tips that fit your ears best and take a fit test in the soundcore app to ensure you get the best ANC performance.

* Dust, earwax or other debris can accumulate in the earbuds. To maintain optimal sound quality, regularly clean your earbuds via using a cotton swab slightly moistened with rubbing alcohol to gently wipe the metal mesh filter under the rubber ear tips. Finally, ensure the alcohol on the metal mesh filter has completely dried.

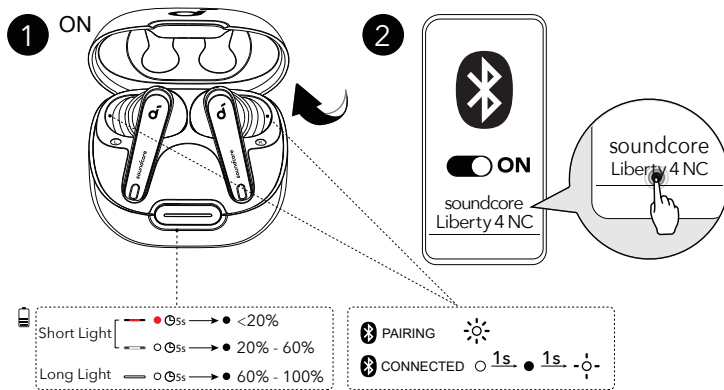
CHARGING



1. Tear off the insulation sticker on the earbuds before first use.
2. Place the earbuds in the charging case and close it.
 - Fully dry off the earbuds and the USB-C charging port before charging.

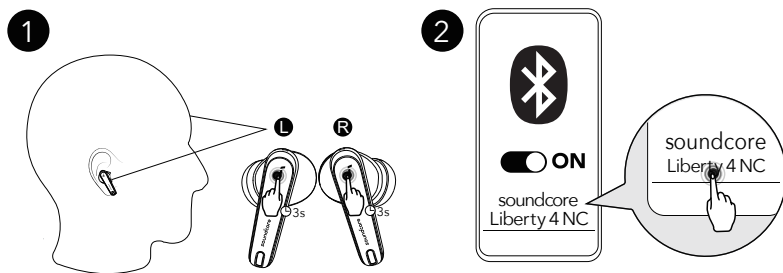
3. Connect the charging case to the power supply by using a certified USB-C charging cable.
Alternatively, position the charging case at the center of your wireless charger for wireless charging.
 - Fully charge both the earbuds and the charging case before the first use.

POWERING ON & PAIRING

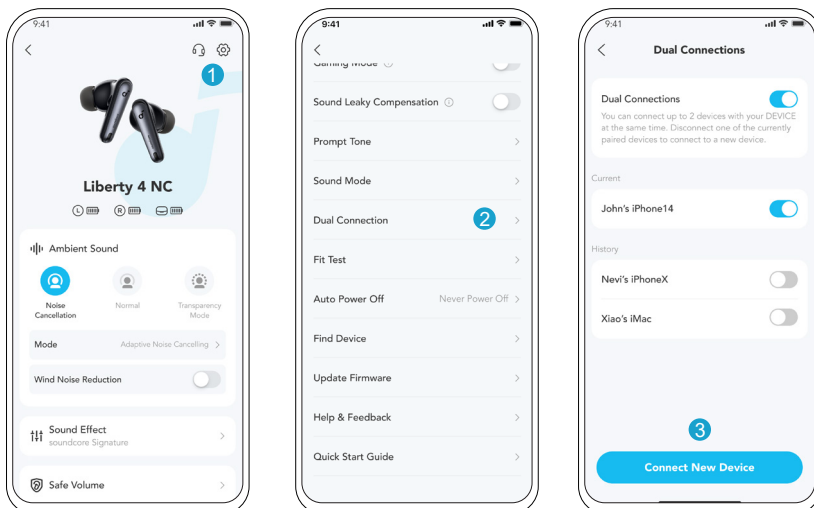


Open the charging case, the earbuds will automatically power on and enter Bluetooth pairing mode. Select "**soundcore Liberty 4 NC**" from your device's Bluetooth list when connecting for the first time.

DUAL CONNECTIONS

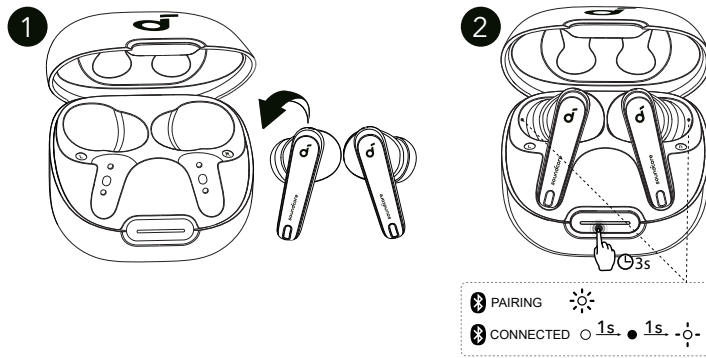


There are two ways to connect the earbuds with two Bluetooth devices at the same time.
Option A: To pair with another device, wear the earbuds, then press and hold the touchpad on both earbuds for 3 seconds simultaneously.



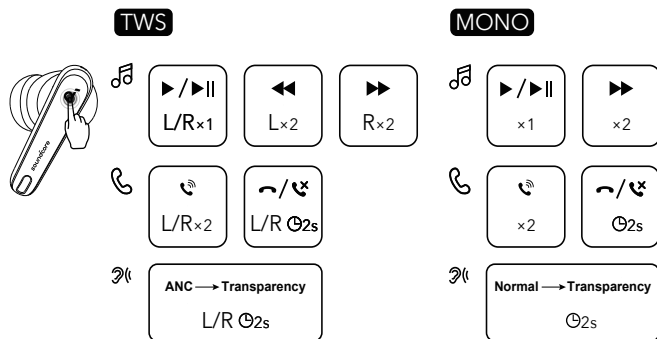
Option B: In the soundcore app, go to settings and select Dual Connections > Connect New Device.

MANUAL PAIRING



To manually enter Bluetooth pairing mode, place the earbuds in the charging case and leave the case open. Press and hold the charging case button all the way down for 3 seconds until the LED indicators flash white rapidly.

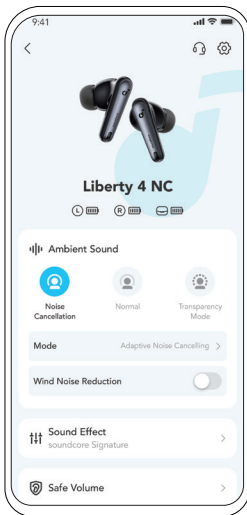
CONTROLS



* You can also customize controls in the soundcore app.

		TWS mode	Mono mode
🎵	Play / Pause	Tap once (L/R)	Tap once
	Next track	Tap twice (R)	Tap twice
	Previous track	Tap twice (L)	/
☎️	Answer a call	Tap twice (L/R)	Tap twice
	End/Reject a call	Tap and hold for 2 seconds (L/R)	Tap and hold for 2 seconds
👂	Switch ambient sound modes (ANC/Transparency)	Tap and hold for 2 seconds (L/R)	Tap and hold for 2 seconds

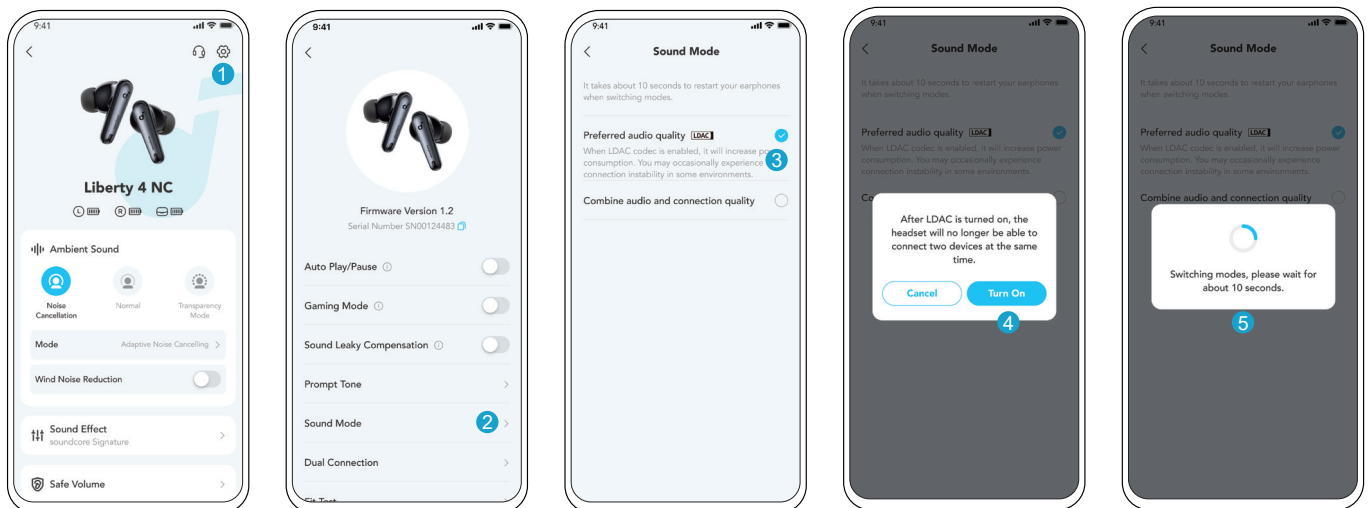
AMBIENT SOUND



You can select noise cancellation, normal, or transparency mode in the soundcore app.

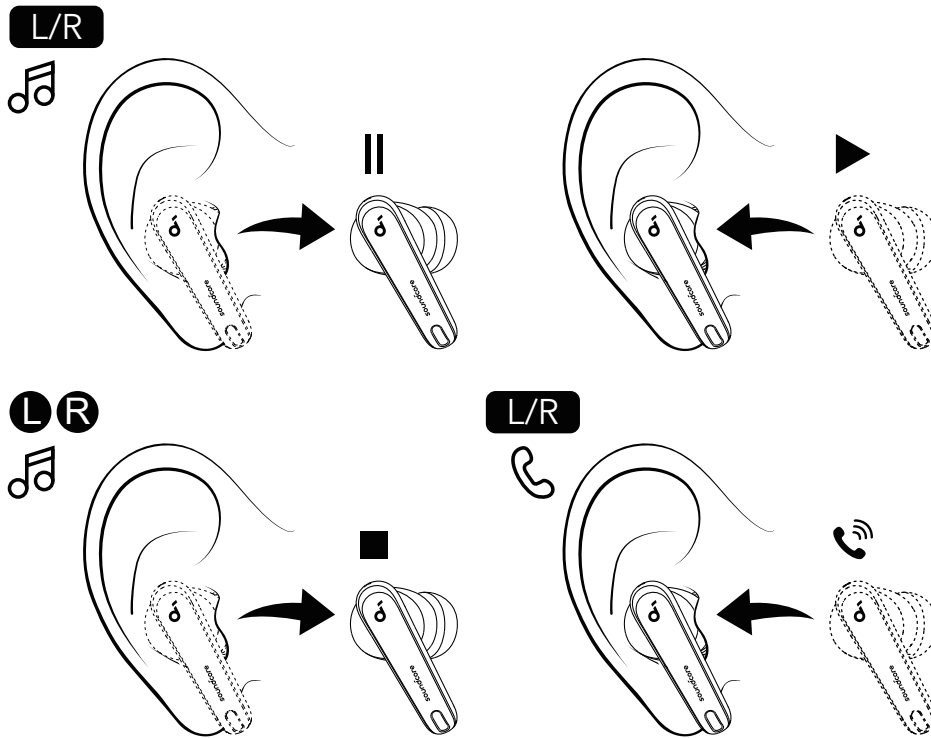
- **Adaptive ANC:** Optimize noise cancellation by adapting to your ears and environment.
- **Transparency:** Stay aware of your surroundings while listening to music.

LDAC



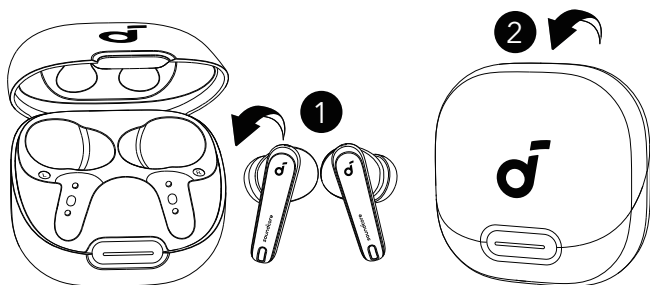
- Use devices powered by Android 8.0 or later to experience LDAC-quality sound.
 - LDAC provides higher-quality sound, increases power consumption, and reduces playtime.
 - Enable LDAC in a low-interference environment to ensure a stable Bluetooth connection.
1. Go to settings in the soundcore app.
 2. Click on "**Sound Mode**".
 3. Select "**Preferred audio quality**" to switch to LDAC codec.
 4. You will be notified that the earbuds do not support LDAC when connected to two devices. Select "**Turn on**" to continue.
 5. It takes about 10 seconds to switch audio codecs. You may be asked to update the earbuds' firmware if available.

WEARING DETECTION



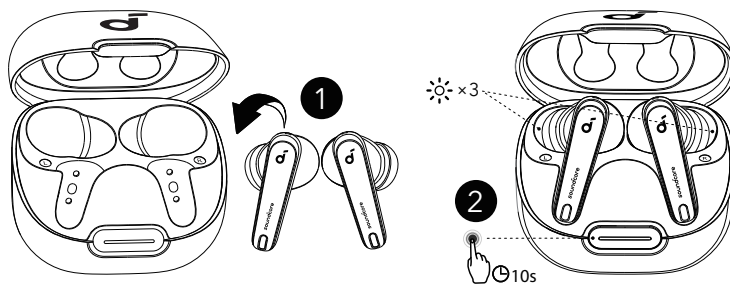
Playback will automatically pause when an earbud is removed and will resume again once you wear it. Wear either earbud to automatically answer an incoming call.

POWERING OFF



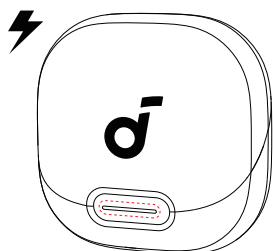
To power off, return the earbuds to the charging case and close it. The earbuds will automatically power off after 30 minutes if they are not connected. The duration can be set in the soundcore app.

RESET

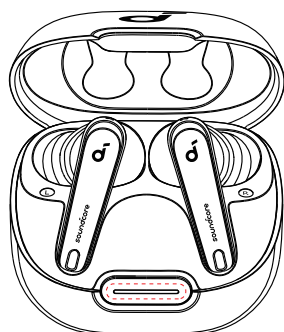


Reset if the earbuds have issues pairing with each other or with other devices. Delete the pairing history from your Bluetooth device first. Place the earbuds in the charging case and leave the case open. Press and hold the charging case button for 10 seconds until the LED indicators flash white rapidly three times.

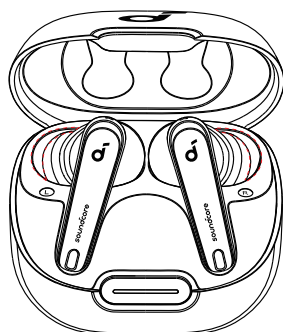
LED LIGHT GUIDE



LED	Description	Battery level during charging
	Short light breathing red	< 20%
	Short light breathing white	20% - 60%
	Long light breathing white	60% - 99%
	Long light steady white for 5 minutes	100%

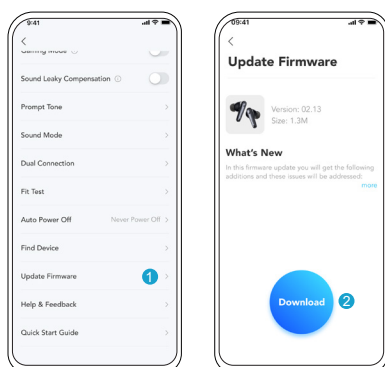


LED	Description	Battery level
	Short light steady red for 5 seconds, and then off	< 20%
	Short light steady white for 5 seconds, and then off	20% - 60%
	Long light steady white for 5 seconds, and then off	60% - 100%



LED	Description	Status
	Flashing white three times	Reset completed
	Flashing white	Pairing
	Steady white for 1 second, off for 1 second, and then flashing white slowly	Connected

FIRMWARE UPDATE



SPECS

Specifications are subject to change without notice.

Input	5V $\overline{\text{---}}$ 0.8
Rated output power	5mW
Battery capacity	53mAh x 2 (earbuds); 800mAh (charging case)
Charging time	Up to 3 hours
Playtime (with ANC off)	Up to 10 hours (50 hours in total with the charging case)
Playtime (with ANC on)	Up to 8 hours (40 hours in total with the charging case)
Driver unit	11mm dynamic driver
Frequency response	20Hz - 40kHz
Impedance	10 Ω
Waterproof rating (earbuds)	IPX4
Bluetooth version	Bluetooth 5.3
Bluetooth range	10m / 33ft

Customer Service



service@soundcore.com
support.mea@soundcore.com (For Middle East and Africa Only)
support@anker.com (日本)

+1 (800) 988 7973 (US/Canada)
+44 (0) 1604 936200 (UK)
+49 (0) 69 9579 7960 (DE)
03 4455 7823 (日本)
+86 400 0550 036 (中国)
+82 02-1661-9246 (한국)
+971 529750842 (Middle East & Africa)
+971 8000320817 (UAE)
+966 8008500030 (KSA)
+965 22069086 (Kuwait)
+20 8000000826 (Egypt)
+61 3 8331 4800 (Australia)
+90 (850) 460 14 14 (Türkiye)
+8 (800) 511-86-23 (Russia)
+91 18003138831 (India)



Note: The 'x' of SN Code: xxxxxxxxxxxxxxxx is a variable, see below table.

Variable 'x'	Range of variable	Content
Seventh	0-9 or A-F	Denotes the hardware version which is not effected on the safety compliance.
Eighth	8,9,A,B,C...	Denotes the year, 8 means 2018, 9 means 2019, A means 2020, B means 2021, C means 2022, and so on.
Ninth and tenth	01,02,03...	Denotes weeks, 01 means the first week in this year, 02 means the secondary week in this year, and so on.
Eleventh	1-7	Denotes date, 1 means Monday, 2 means Tuesday..., 7 means Sunday and so on.
The last five	1-700001-99999	Denotes serial No.

Hereby, Anker Innovations Limited declares that this device is in compliance with The Product Security and Telecommunications Infrastructure (Security Requirements for Relevant Connectable Products) Regulations 2023. For the Statement of Compliance, visit the website: <https://uk.soundcore.com/pages/psti-related>.

1. Power consumption in standby mode: $\leq 0.5W$
2. Powermanagement: $\leq 20min$
3. Information of applicable adapter:
Brand: ANKER
Manufacturer: Anker Innovations Limited
Model: A2337
Input: 100-240Vac, 1A, 50-60Hz
Output: 5V \equiv 3A / 9V \equiv 3A / 12V \equiv 2.5A / 15V \equiv 2A / 20V \equiv 1.5A (30W Max)

Default Open Port: Classic Bluetooth

Port Description: After the device is powered on, Classic Bluetooth visibility (or pairing mode) is automatically enabled, providing Bluetooth pairing (or control) services. The Bluetooth service is disabled when the device is powered off.